

How to Set Your Middle Schooler Up for Success

August 2025



Student Drop-off & Pick-up

- 6th grade families need to use the Devinny parking lot.
- 7th & 8th grade families will use the loop around Dunstan's parking lot.
 - ◆ 7th graders will enter through the main entrance.
 - ◆ 8th graders will enter through the South Tower entrance.



Academics

- 6 Classes - on Google Classroom and Infinite Campus.
Track grades on IC and coursework on Google Classroom.
- At the beginning of the year sit with your student and review each class (IC and Google Classroom) twice a week. If they are doing well, you can change this to once a week. Please continue to check these at least once a week for the rest of middle school.



Our Goal

For every student to feel connected, known, and honored for who they are - and who they are becoming!

Jeffco wants all middle schools to focus on developing a sense of belonging for every student: to know each student by name, strength, and need!

Academics + social and emotional development!



As Parents/Guardians

Know your student's academics - each week and throughout each semester

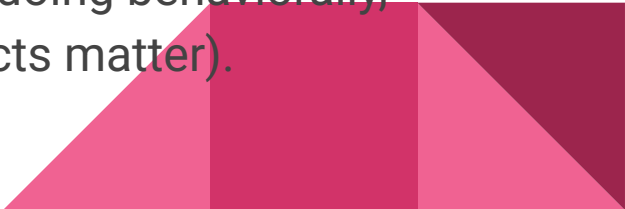
Know your student's social and emotional growth

Know your student's online presence on all platforms

Coach your student in all of these areas. We will also provide coaching, but your voice and guidance matters and is more lasting than our staff!

Have a positive relationship with your student and try to avoid having an adversarial relationship.

Attend Parent-Teacher Conference and ask how are they doing behaviorally, academically, and socially/emotionally (all of these aspects matter).



Download & Use the Infinite Campus (IC) Parent Portal app

Welcome to the Infinite Campus Portal

The Infinite Campus Parent Portal is an online system that allows parents/guardians and students to access and manage their information.

Here you can:

- Maintain parent/guardian/emergency contact information (starting 12/8/21)
- Pay fees online
- Manage school and district communication preferences
- View grade and attendance data and more!



What is Standards Based Grading?

| | |
|---|-------------------------|
| 4 | Exceeds the standard |
| 3 | Meets the standard |
| 2 | Approaches the standard |
| 1 | Beginning the standard |

If a student receives a 3 they are able to demonstrate this skill on grade level

6th Grade CO
Math Content
Standard

Example:

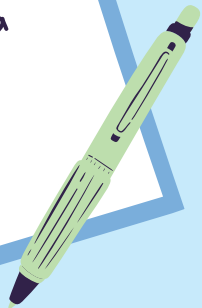
Apply the concept of a ratio and use ratio language to describe a ratio relationship between two quantities

What is Standards Based Grading?

A system of grading that measures students based on their *mastery of grade level content standards & communicates their progress (meets, exceeds, approaches)*

6th Grade CO Math Content Standard Example:
Apply the concept of a ratio and use ratio language to describe a ratio relationship between two quantities

$$x \cdot c = (a \cdot b) \cdot x \cdot c$$
$$a \cdot b = b \cdot a$$



COLORADO ACADEMIC STANDARDS

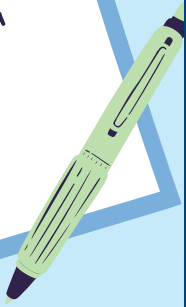
All Students, All Standards



COLORADO
Department of Education

Standard vs Traditional

$$xc = (a \times b) \times c$$
$$ab = ba$$



Traditional Grading System

| Class | Q1 |
|-------------|---------|
| Mathematics | 92% = A |

Standards-Based Grading System

| Class/Standards | Q1 |
|---|----|
| Mathematics | 3 |
| I can define a number sentence | 2 |
| I can solve number sentences that have brackets | 2 |
| I can find the sum of two 2-digit numbers | 3 |

Why SBG??



- Grades as a measure of academic progress, not self-worth & identity (ex: I am a B students vs I am student who is at grade level. I understand long division, but need to improve using fractions)
- Equity - reduces bias in grading process
- Reflects real world performance evaluations rubrics



SBG Policies



- All grades given are on the scale **1- 4**
 - “M” = missing assignment, still accepted
 - “0” = no work received, no longer accepted
- We only assess **content** using colorado academic standards
- Each standard has a performance rubric that students are evaluated on (or self evaluate!)
- Extra credit is not used
- Students are highly encourages to complete retakes or try again until they meet the standard

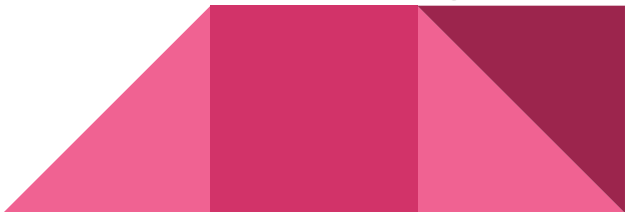


On/Off Track Thresholds

| | Work Habits Achievement | Attendance | Behavior |
|---------------------------------|--|---|--|
| On-Track | 2.5 or Higher (Weekly Average) | 2 or fewer tardies (Average, per week) | No ISI or OSS; Also multiple behavior referrals will result in an off track status |
| Off-Track | 2.49 or Lower (Weekly Average) | 3 or more tardies (Average, per week) | 1 or more ISI or OSS; Also multiple behavior referrals |
| How to Get Back on Track | Improve WH GPA through meeting content rubric expectations | Students off-track for tardies will be required to attend lunch detentions. | Students will be required to make up 2 periods of time with school beautification or academic catch-up (for each ISI/OSS over threshold) |

- ISI = In-School Intervention
- OSS = Out of School Suspension

Social Emotional Learning (SEL) @ Dunstan

- Weekly SEL lessons on Wednesday during Advise on topics such as bullying prevention, coping strategies, problem solving, asking for help, etc.
 - Weekly proactive circles on Friday during Advise. This is a time for students and teachers to get to know each other and connect on a deeper level to create a strong sense of community & belonging.
- 

Socially & Emotionally

Have daily conversations with your tween/teen about how they are doing, what they are feeling, and ask how you can help.

They may shut you down some days, but other days want to talk and process.

They need your help navigating these years including their physical changes and changes they are experiencing with friends and peers.

In middle school they will know peers who make poor choices. You need to prepare them for this reality. Coach them to be kind but stay away from the poor choices of others.



Parental Supervision & Partnership With Your Teen

2 times per week review Google Classroom and [Infinite Campus](#). Have your child log into GC. Ask questions such as - what are you learning, what is this about, what do you like/not like?

When you purchase a Smart Phone - please research all of the guardrails and protections that can help prevent your teen from going to inappropriate content.

When your child gets a phone - please keep it with you at night in your room - computer and phone. This is our recommended policy through middle school.

Your child should ask you for each & every platform.



Parental Supervision - Academics

Know your child - reasonable expectations - not too high and not too low.

Grades should reflect your student's ability and allow them to have work/life balance!

Dunstan encourages redos of school work up until the end of that unit! Our staff believes this is an appropriate expectation of middle school students and it promotes a growth mindset - try, try again!

Tuesdays & Thursdays are Travel Days in Advise - please encourage your child to take advantage of these. This structure mirrors high school access periods.

Homework - about 1 hour/night & more if in more advanced classes.

Parental Supervision - Social & Emotional

If your child has a phone and is able to access platforms - please review these at least weekly.

Normal middle school experience: ups and downs; tears; joy; etc.

If your student shows ongoing sadness, significant anger, etc. - please communicate with our Counselor, Ryan Cole or SEL (Social Emotional Learning Specialist), Leslie Pruitt. Have a conversation with them earlier rather than later - proactive is better than reactive.



TechForEd Chromebooks

TechForEd Program

Current 6th grade students who have been in Jeffco have now been a part of the [TechForEd program](#) since at least June 2022.

- Expectations related to the use and care of district property remains the same whether the item is library book or a district Chromebook. The item students borrow should be cared for accordingly. **Middle schoolers will need constant reminders & expectations at home to support those conversations happening at school.**
- Families need to make sure to review these documents and resources with student(s) so everyone is on the same page:
 - [Jeffco's Technology Use Agreement](#) (updated 7/2025)
 - [Dunstan's Student Chromebook Info](#) (includes troubleshooting, expectations and processes students need to follow so they are prepared to learn each day)

TechForEd Chromebooks

Chromebook Lifespan & Information

The district expectation for students is that they take care of, keep track of and use the **same Chromebook for 4 years**.

- *Students are issued a new Chromebook in 5th grade & will turn it in for another new Chromebook in 9th grade

- *Basic troubleshooting: Students & families must do basic troubleshooting when issues arise that aren't the result of physical damage.



TechForEd Chromebooks

Repeat-Intentional-Excessive Damage

Taking proper care of and keeping track of the Chromebook loaned to students by the district is **essential**.

- When students show a **continued** carelessness with Chromebooks, information is documented and families are contacted.
- If a student continues to show repeated-intentional-excessive damage, Ms. Dolan documents the issue in IC and makes her recommendations to the Dean of Students based on a student's individual history.

Families who qualify for reduced fees are not exempt from fees associated with fees for repeat-intentional-excessive school/district property damage/loss.

TechForEd Chromebooks

Securly Home

[Securly Home](#) is a monitoring tool provided by Jeffco that families can use to support their student(s) as they navigate and use the Internet.

It allows parents to:

- Set & Manage Filtering Rules
- Create & Manage Allow & Block Lists
- Pause Internet Access
- Set Individualized Usage Schedules
- And More



Safety at MS

We work with Jeffco Safety & Security, Lakewood Police Officers, and Jeffco District Administration to follow through with students and families as needed.

We work with Safe-2-Tell, which can be anonymous or people can reveal who they are concerned about.

We want to work with you regarding safety.

I over communicate as opposed to under communicate, but sometimes this takes some time.

I will put us in a more secure stance than a less secure stance.



Belonging at MS

Feeling a sense of belonging is important for all students!

We want to know every student by name, strength, and need.

Jeffco is running a student SEL survey 3 times per year to provide feedback about belonging. The results are helping us adjust our approach with students and programming to meet their needs.

It is our honor and joy to work with your students!



WEB PROGRAM



- WEB is a middle school transition program that welcomes 6th grade students and makes them feel comfortable throughout the first year of their middle school experience. WEB, an acronym for Where Everybody Belongs, is built on the belief that students want to and can help other students succeed.
- 1st Day of School - FUN!!!
- Monthly Activities to connect with their WEB leaders and other 6th grade friends!
- Advise lessons on topics like being kind, strategies for success, etc.



Open & Honest Relationships with Parents

Know & communicate your lines in the sand

Help your child say no to peers - give them your permissions, phrases to say, and expectation

Help your child advocate for others

This is a necessary partnership - between families and school to support your child through middle school (stay positive & engaged)

Know where your child is and who their friends are



To Whom Should You Communicate, Why, When, & How

Jennifer Pennell, Principal; jennifer.pennell@jeffco.k12.co.us

Michael Kitch, Assistant Principal 6th Grade;

michael.kitch@jeffco.k12.co.us

Ryan Cole; 6th Grade Counselor

ryan.cole@jeffco.k12.co.us

Leslie Pruitt, Social Emotional Learning

Specialist (SELS); leslie.pruitt@jeffco.k12.co.us

