



View:
[BULLETIN](#)



Healthy School Teams

HST Requirements, Food Fundraising, Vending Machines & School Stores

Paula Triana RDN, LDN

Wellness Promotion Manager

Frances Rosier

Wellness Promotion Senior Analyst

Megan Rimpel

Wellness Promotion Analyst



Wellness Promotion Policy (WPP) 2.035 Scope...

This Policy fulfills the requirements under Federal and Florida laws that school districts have a local "**school wellness policy**" to promote student health, safety, and the reduction of childhood obesity. It creates a wellness culture for all students and staff, emphasizing the connection between learning and health.

View: [WPP \(2.035\)](#)

*Whole School,
Whole Community,
Whole Child
(WSCC) Model*





Healthy School Teams (HST)

The Wellness Promotion Policy (2.035) requires each school to establish a Healthy School Team (HST) to ensure schools are creating healthier environments with a cohesive wellness culture and remain in compliance with the Smart Snacks in School Standards.

View:
[HST Webpage](#)

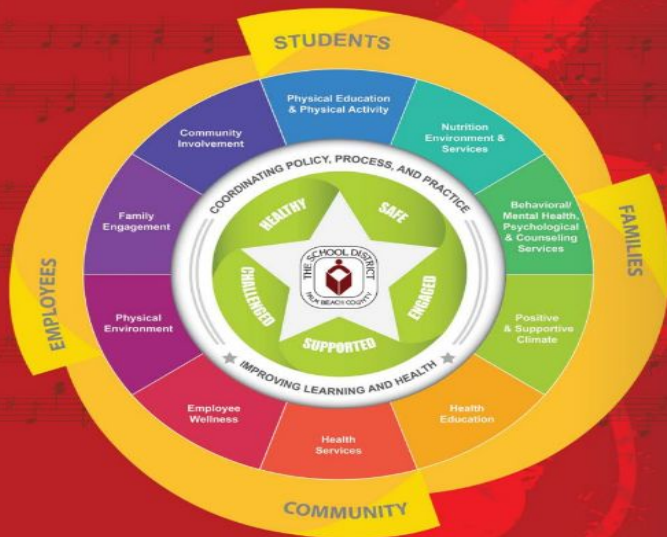
View:
[HST Resources](#)



The School District of Palm Beach County

Working in Concert to Create a
*Whole School, Whole Community,
Whole Child Culture...*

A Symphony of Services Improving Learning and Health



The 10 WSCC Components and their Goals



- 1. Physical Education & Physical Activity**
 - **Goal:** To promote physical activity and provide physical education with the intention of improving students' health, academic achievement, and reducing childhood obesity.
- 2. Nutrition Environment & Services**
 - **Goal:** To promote student and staff health through the operation of Child Nutrition Programs, safe food practices, and the availability of healthy eating environments, school gardens, nutrition education, and promotional outreach, with the intention of improving staff and students' health, academic achievement, and reducing childhood obesity.
- 3. Behavioral/Mental Health, Psychological & Counseling Services**
 - **Goal:** To promote the behavioral, emotional, mental and social health for students and staff.
- 4. Positive & Supportive Climate**
 - **Goal:** To promote and safeguard the behavioral, emotional, physical, and social health of students and staff.
- 5. Health Education**
 - **Goal:** To provide health education initiatives in an effort to promote the overall wellness of students and staff.
- 6. Health Services**
 - **Goal:** To provide health related services and information to students and parents/guardians.
- 7. Employee Wellness**
 - **Goal:** To promote the safety and the physical, social, behavioral, and emotional health of staff.
- 8. Physical Environment**
 - **Goal:** To provide a physical environment that meets or exceeds federal guidelines to include, but not limited to, the following topics: school safety and security, indoor air quality, managing asbestos in schools, reduction of health and environmental hazards, radon testing and mitigation, compliance with OSHA Hazard Communication Standards, protection of natural habits, and sustainable schools.
- 9. Family Engagement**
 - **Goal:** To encourage families to participate in the wellness initiative in our District to support student's physical, social, behavioral, and emotional well-being.
- 10. Community Involvement**
 - **Goal:** To encourage community involvement in the wellness initiative in our District to support student's physical, social, behavioral, and emotional well-being.

Whole School, Whole Community, Whole Child Culture



Complete:
[HST Members](#)
[Charter Form](#)

Possible Members for Your School's HST Team

1. **Physical Education & Physical Activity** = Physical Education (PE) Teacher
2. **Nutrition Environment & Services** = School Food Service (SFS) Manager, SFS staff member
3. **Behavioral/Mental Health, Psychological & Counseling Services** = School Behavioral Health Professional (SBHP), School Psychologist, School Counselor
4. **Positive & Supportive Climate** = Skills for Learning & Life (SLL) Lead, Safe School Ambassador, Positive Behavior Interventions and Supports Team (PBIS)/Internal Coach (IC), Single School Culture Coordinator, School Based Team (SBT) Leader, ESE Representative, Club/Activity Sponsors
5. **Health Education** = Health and/or Academic Teachers, School Counselor, Media Specialist
6. **Health Services** = School Nurse/Health Room Staff, 504 Designee/ESE Coordinator
7. **Employee Wellness** = Wellness Champion (Staff)
8. **Physical Environment** = Green Champion, School Police, School Garden Liaison, School Custodian, School Administration
9. **Family Engagement** = Parents, ESOL Representative, Equity Representative, PTA/PTSA Representation, PTO/PTSO Representative, Title 1 Contact, School Administration, and Faculty
10. **Community Involvement** = Nonprofit Organizations, Community Stakeholders, Students' Clubs and Organizations



Healthy School Teams (HST) Requirements and Oversight

- Complete [‘Charters’ HST Members’ FY26 Form](#) - HST Lead and HST Members.
- Healthy School Team **must meet as needed** to support the goals and objectives of the [School Food Service Management Policy \(6.185 Section 5\)](#), and the [Wellness Promotion Policy \(2.035\)](#).
- When required, the HST Lead and HST Members assist with the completion of the required **Wellness Promotion Policy School Assessment** ([FY23 Responses](#)).
- Complete the required [FY26 Food Fundraising Tracking Form](#) prior to each food fundraiser held on campus with **one** entry form per fundraiser when food is sold to students during the school day.

USDA Definition of 'School Day'



View:

Florida State Statute ([FAC 5P-2.002](#))

STARTS: Midnight

ENDS: 30 minutes after the official school day ends – (last bell)

FOOD Fundraisers are
ONLY allowed to be sold
30 minutes AFTER the last lunch.



Food Fundraisers During the School Day

When Selling Food to Students

- Follow the **Allowable Selling Time**:
 - Schedule the food fundraiser between **30 minutes after the last lunch period ends and up to 30 minutes after the end of the official school day (last bell)**.
- Adhere to the **Allowable Exemption Amounts** for the school year:
 - *Unless the food items meet Smart Snack Compliant*

School Level	Number of Allowable Exemptions
Elementary Schools (Including K-6, if applicable)	5 days during the school year
Middle (6-8)/Junior High (7-9) Schools	10 days during the school year
High Schools (9-12)	15 days during the school year
Combination Schools (PK-8, 6-12, K-12)	10 days during the school year

- Complete the [Food Fundraiser Tracking Form](#) – prior to each food fundraiser held on campus during the school day...**One Entry Form Per Fundraiser.**

Combination Foods

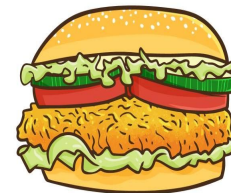
“Entrée-like” items containing a protein and a grain



May ONLY be sold
30 minutes AFTER the
end of the school day.

Cannot be an Exemption at ALL

Amended State Statute revised as of September 5, 2023



View:
[USDA's Smart Snacks in Schools](#)



Culinary Arts Program During the School Day



View:
[Smart Snack
Calculator](#)

- Foods from the Culinary Arts Program that **DO NOT** meet the **Smart Snacks nutrition standards** **must not** be sold to students during the school day.
- Foods from the Culinary Arts Program that **DO** meet the **Smart Snacks nutrition standards** can be sold to students **30 minutes after the last lunch period** and **must** follow the Food Fundraising Required Guidelines (*see food fundraising required guidelines slide*).
- Foods from the Culinary Arts Program can be sold to **adults** at any time during the school day.



Vending Machines & School Stores

According to the **United States Department of Agriculture (USDA)**, **beverages & snacks sold** in **Vending Machines and School Stores:**

- Are **NOT** considered Fundraisers
- May be operational at anytime during the school day
- **Must ALWAYS be Smart Snack Compliant when selling snacks and beverages**



SCHOOL STORE

ADD
SCHOOL
LOGO OR
DELETE



Kids First

Providing FOOD For Thought!



Thank
you

healthyschoolteams@palmbeachschools.org