

# CLASS SYLLABUS

Pathways to College and Career | Coach Dennis

## COURSE OVERVIEW

The focus of this class, is to build foundational skills for college and career readiness. It emphasizes study skills, research, critical thinking, and personal growth.

## GRADING POLICY

Weekly grade based on the following categories:

1. DAILY PREPARATION = 10 points

You must bring these items EVERY DAY to receive the points.

- Assignments from other classes.
- Charged Ipad
- Pen/pencil, notebook paper.
- Novel/ Free reading book

2. DAILY AGENDA

- Full details = 30 points.
- Partial details = 15 point

3. TIME WORKED IN CLASS

- All period = 60 points
- Most of the period = 45
- Half the period = 30
- Some of the period = 15
- None of the period = 0

## EXPECTATIONS

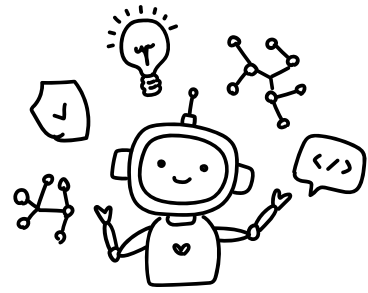
- 1 This is a shared room, because of this we must always be respectful, and allow others to work in a QUITE enviroment.
- 2 Come prepared with materials and a positive attitude.
- 3 Participate actively in discussions & activities.
- 4 Follow all school rules and classroom procedures.

## LATE WORK

Learning is a process. My priority is your learning and growth, so focus on understanding the material and following procedures. You are allowed to make up missing assignments within two weeks of the date they were assigned.

# AI GUIDELINES & POLICY

You are encouraged to utilize AI tools in your school work to enhance research efficiency and deepen understanding. However, you must ensure that the use of AI is accompanied by critical evaluation, maintaining academic integrity by properly citing sources & acknowledging the limitations of AI-generated content.



## UNITS OF STUDY

Organization

Time Management

Note- Taking

Active Recall

Active Reading

Communication

Goal Setting

Maintaining Focus

Research

## CONTACT INFO

I am here to help you succeed! If you have questions or need extra support, feel free to reach out during class, after school, or via email. I encourage parents and guardians to contact me with any concerns or questions.

[Kdennis@ldisd.net](mailto:Kdennis@ldisd.net)

## IMPORTANT DATES

- 10/8- 1st Quarter Ends
- 12/8 Any outstanding work should be in for all classes.
- 12/17- 12/19 Semester Exams