



## Measure J Bond

Winter 2016

Vol. 2, No. 6

BURI BURI SIX PACK – FEBRUARY 2016

MEASURE J UPDATE

# Bond Program Update

Michael Krause  
Assistant Superintendent, Business Services

The Measure J Bond Program has incurred many drastic changes since the last newsletter. First of all, Mr. Salom Samad has left the District which leaves the Bond Program short staffed. Salom worked tirelessly for the District as the Construction Manager for our two main projects and several completed projects. The District is actively seeking to fill his position.

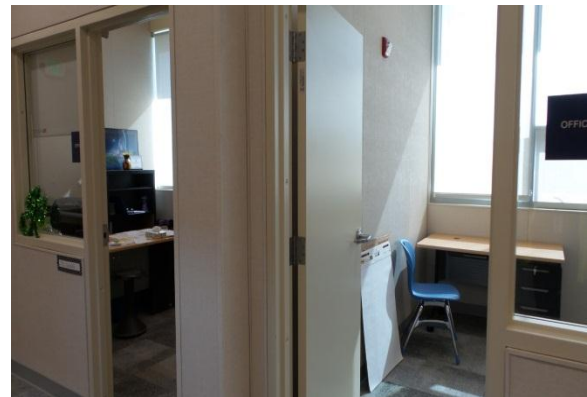
Also, the District has hired a part time Bond Consultant. Mr. Bill Savidge started at his post on February 3, 2016, and brings much expertise in school construction and construction administration. He will lead the way in what will be a difficult transition.

Finally, on January 21, 2016, the SSFUSD Board of Trustees took action to redirect the Measure J Bond Program by “discontinuing” their relationship with USS Cal Builders. Over the course of the last year, the relationship between the District and USS Cal Builders deteriorated to a point that necessitated this action.

It is the Board’s utmost concern to revive the program in a manner worthy of its staff, students and community. All effort is being made to streamline this transition with minimal disturbances to our current and future projects.

The Board has approved a prequalification process of selecting potential contractors to complete the Measure J construction work. This process could take up to 4-6 weeks; once complete, the District will decide the type of delivery method, packaging and phasing before putting the remaining parts of the projects out to bid.

Despite these major changes, Parkway Heights was able to open 19 new classrooms and its counseling offices on February 1. Twelve new classrooms in Building D, six classrooms in Building I, the art room of Building J as well as counseling offices in Building G opened to new students and staff. The Bond Office continues to be grateful to all the communities involved for their patience, understanding and input. Thank you for your support.



Parkway’s Counseling Offices – February 2016

## MEASURE J BOND UPDATES

[www.ssfusd.org/mjb](http://www.ssfusd.org/mjb)



*Parkway Heights West Campus – February 2016*

### January 21 Board Meeting

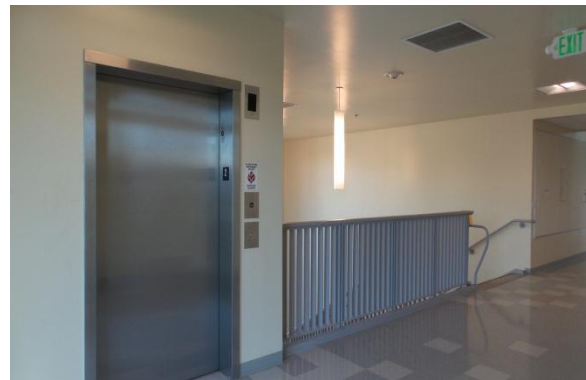
On January 21, 2016, the SSFUSD Board of Trustees called a special meeting to address the ongoing concerns the District has had with the Measure J Bond program and its main contractor, USS Cal Builders. After reviewing a history of the bond work, and in light of the findings from the audit released last spring, the Board decided to pursue discontinuing its relationship with USS Cal Builders. Staff is in the process of reviewing how this transition will take place. Utmost attention will be taken to streamline these changes.



*Buri Buri Admin Office – February 2016*

### Parkway Construction Update

Parkway opened up four new buildings in January. Building D, a 12 classroom building, and Building G, a counseling building, opened up on February 1<sup>st</sup> along with the West Campus buildings – Building I and J. Students moved from the Interim Housing portables to the new buildings. Soon students from the existing classroom buildings will move to the portables in order to begin demolition of those buildings. In this transition, new phasing plans may be created to facilitate better construction and school operation relationships.



*Parkway Building D – February 2016*

### Buri Buri Construction Update

Although over 60% of the Buri Buri project is complete, there remains considerable construction work to be done. After the contractor leaves the site, the District will work with the Buri staff to make the campus more amenable for MPR and temp library access as well as enlarging play areas for a new play structure. The safety and comfort of the students and staff are a priority at this time of transition. The District is eager to begin planning the remainder of construction at Buri. Two new buildings remain to be constructed as well as landscaping and finish sitework.

## Winter Activities

**Buri Buri and Parkway transitions**

**Martin Project preliminary work begins**