



WESTBOROUGH MIDDLE SCHOOL TEACHING & LEARNING

November 17th, 2022

Loraine Rossi de Campos, Ed.D



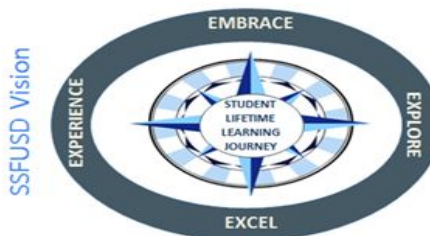


District Goals

LCAP GOAL 1

Academic Achievement

The district will provide a high quality curricular program for students that will raise student proficiency on the California Common Core State Standards as measured by overall academic achievement on state assessments, CA Dashboard results, interim assessment data and ELPAC/Reclassification data.



SSFUSD Vision

LCAP GOAL 4

Special Education

The district will provide high quality curricular programs for students with IEPs that will raise student engagement in school and proficiency on the California Common Core State Standards as measured by overall academic achievement on state assessments, and engagement rates.

LCAP GOAL 2

Professional Development

Identified classified staff, certificated and administrative staff will participate in professional development to create capacity and expertise in curriculum program implementation based on the development of scope and sequence as measured by walkthrough observations and other evidence (artifacts and student work).

LCAP GOAL 3

Student, Parent & Community Engagement

Improve parent school engagement through an increase in participation in site and district parent groups such as SSC, PTSA, DELAC, ELAC, AAPAC as well as in other parent meetings as measured by attendance sign in sheets.

District Priorities

A) Improve Curriculum, Instruction & Assessment

B) Bolster Professional Learning and Collaboration

C) Strengthen Leadership Capacity

✧ WMS - SITE GOALS - 21 - 24

By the Spring of 2024,

- ✦ After receiving instruction guided by the district approved curriculum/programs,
 - ✧ all Westborough students will demonstrate a 3% growth in ELA and math*

**when compared to the 2020-21 schoolwide scores in both ELA and math (LCAP 1).*



WMS - SITE GOALS - 21 - 24

- ✦ After attending professional development opportunities, Westborough staff will
 - × demonstrate the ability to support CC State Standards aligned with our district priority standards,
 - × integrate current educational technology practices, and
 - × create a safe and positive learning environment for all students (LCAP 2).



✦ WMS - SITE GOALS - 21 - 24

- ✦ All students will exhibit a 3% decrease in absenteeism and a 3% decrease in suspension rate
 - ✦ after participating in relationship based or trauma-informed instructional practices & counseling approaches,
 - ✦ school extracurricular activities (e.g., clubs, concerts, intramurals, movie nights, etc.), and the school's PBIS program (LCAP 3).



WMS - SITE GOALS - 21 - 24

- ✦ After receiving instruction guided by the district approved curriculum/programs,
 - ✦ all students with an IEP will demonstrate a 3% growth in ELA and math* (LCAP 4).



SSFUSD

STRENGTHENING OUR SYSTEMS

the GAS TANK BENCHMARKS

checking student progress toward goals.

HOW CAN WE LEVERAGE DATA?

the STEERING WHEEL INSTRUCTION

guiding our learning objectives
ENGAGES US + TAKES US FORWARD

the GPS NAVIGATION

our goals
LCAP, DEPT., SITE, TEAM, TCHR.

FFME - A PROCESS TO DETERMINE WHAT TOOL, PRACTICE, & SERVICE WILL HELP US SOLVE OUR IDENTIFIED NEED

WHAT IS OUR ACTION PLAN?

HOW DO WE REFLECT + RELENTLESSLY FOLLOW UP?

the SEATS CURRICULUM

defines the skills to be taught
STANDARDS, RIGOR, RELEVANCE



the ENGINE PERFORMANCE MANAGEMENT MEETINGS

showcasing data + progress
ILTs, PLCs, DEPT. MEETINGS

EVERYONE DRIVES THE CAR AT HIS / HER OWN LEVEL.

the WHEELS SYSTEMS OF ASSESSMENT

sets the pace

WHAT QUESTIONS HELP US DETERMINE ROOT CAUSES OF PERFORMANCE?

the MIRRORS PROFESSIONAL LEARNING SYSTEM

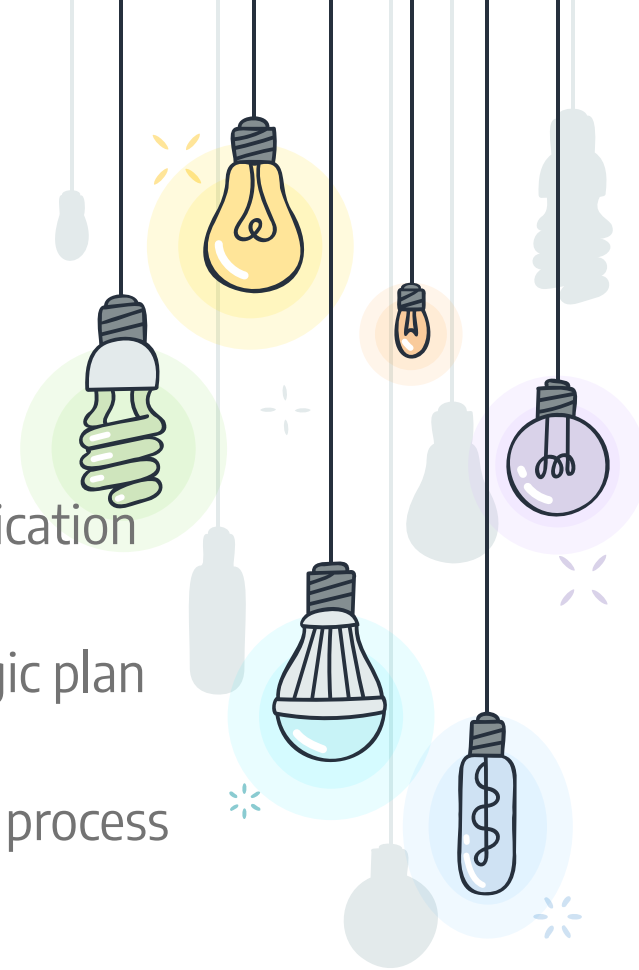
reflecting + growing in our professional practices

EQUITY

OUR VISION

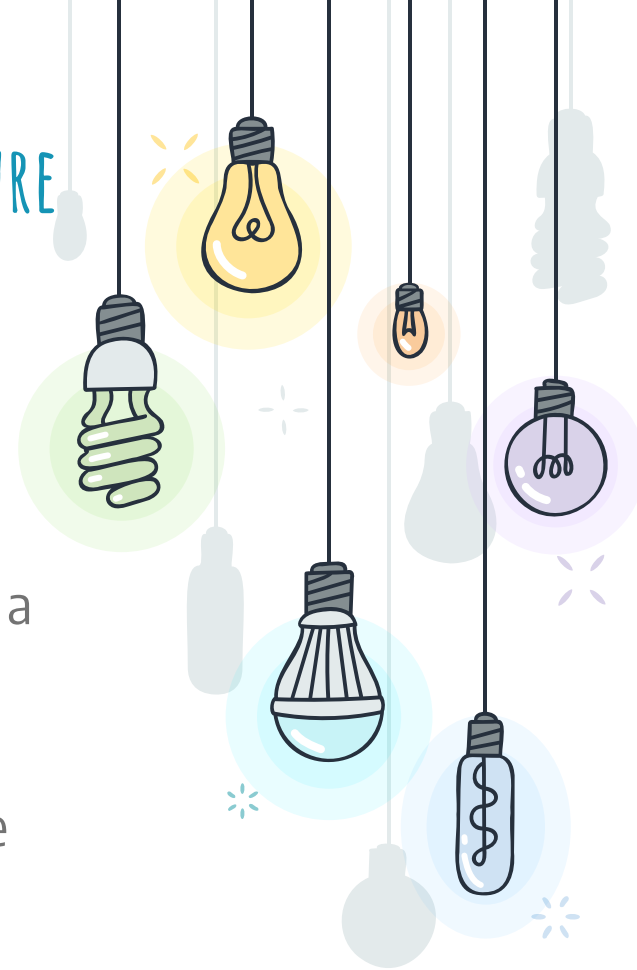
A Healthy, Happy Westborough!

- + Developing & strengthening our team
- + Build relationships & clear channels of communication throughout our community
- + Continue to align ourselves with District Strategic plan & LCAP goals
- + Care for ourselves & each other throughout the process
- + Reflect on why we teach the way we do



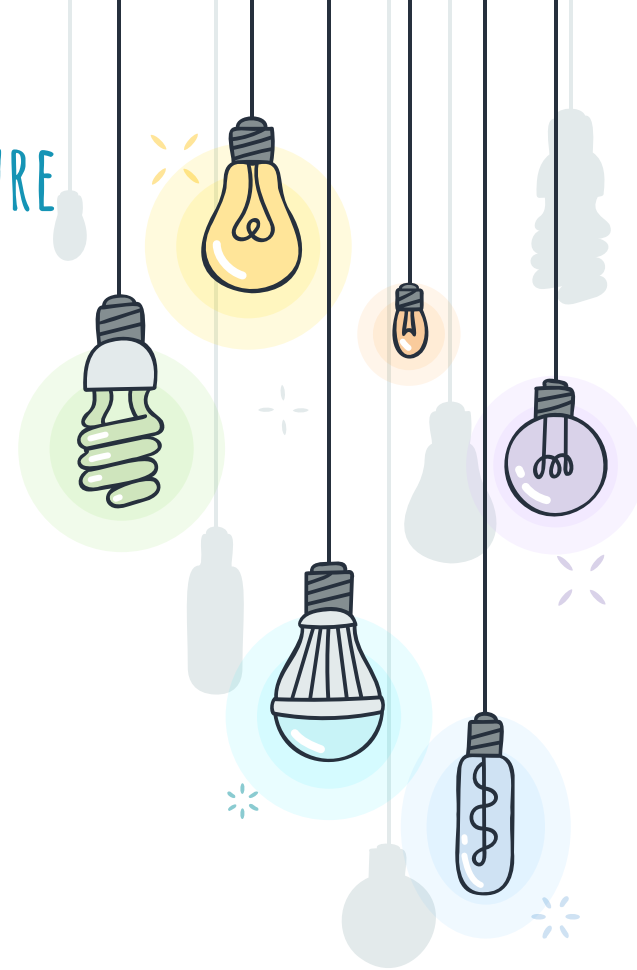
✧ FOCUS ON BUILDING UP RELATIONSHIPS & CULTURE

- ✧ Staff Retreat in HMB to build our capacity for utilizing & understanding relationship based practices
- ✧ Use of Community Circles & Restorative Circles
- ✧ Alternative to Suspension program on site once a week
- ✧ Leadership Team is reflecting on current practices, strengthen group accountability & the team's awareness of emotional intelligence.



FOCUS ON BUILDING UP RELATIONSHIPS & CULTURE

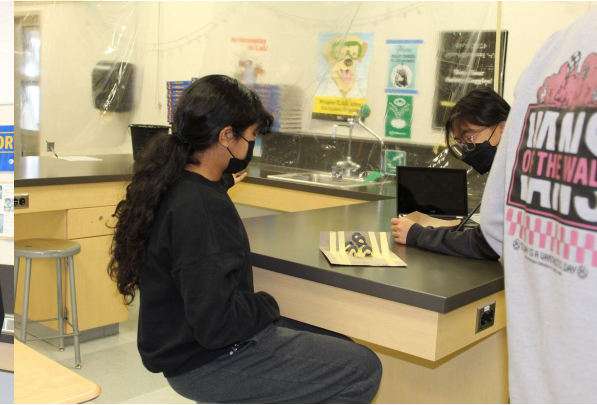
- + Relunched PBIS Program
- + Grade Level Events offered consistently
- + Leadership Brought Back Lunchtime Events
- + Spirit Weeks
- + Anti Bullying Awareness Events
- + Band Concerts
- + 2022 Color Run
- + Mini Course in April
- + We are planning for Field Trips





SCHOOLWIDE FOCUS ON ACADEMICS

- + Honor Societies
- + Honor Roll
- + Science Fair
- + Helix Cup
- + Spelling & Geography Bees
- + Environmental Conservatorship Opportunities



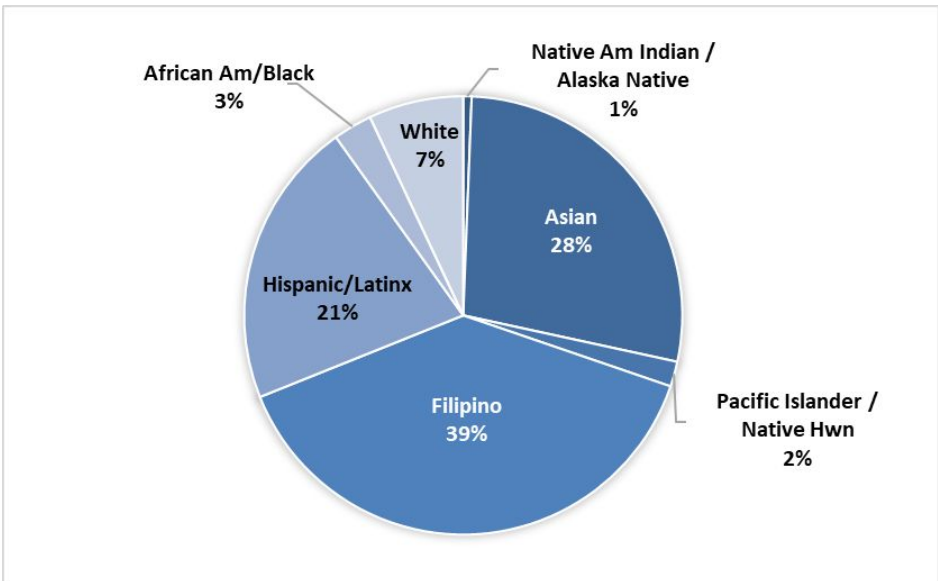
Positive & Engaging Environment

- ✦ Two Counselors
- ✦ YSB Program
- ✦ PBIS Program
- ✦ NCPP, RTS Partnerships
- ✦ Variety of Clubs & Events
- ✦ Mini Course Day
- ✦ Strong Music/Arts Program





Students by Race/Ethnicity



As of 10/28/22, 2 students in Virtual Independent Study

Students by Grade Level

6th	7th	8th
156	169	162

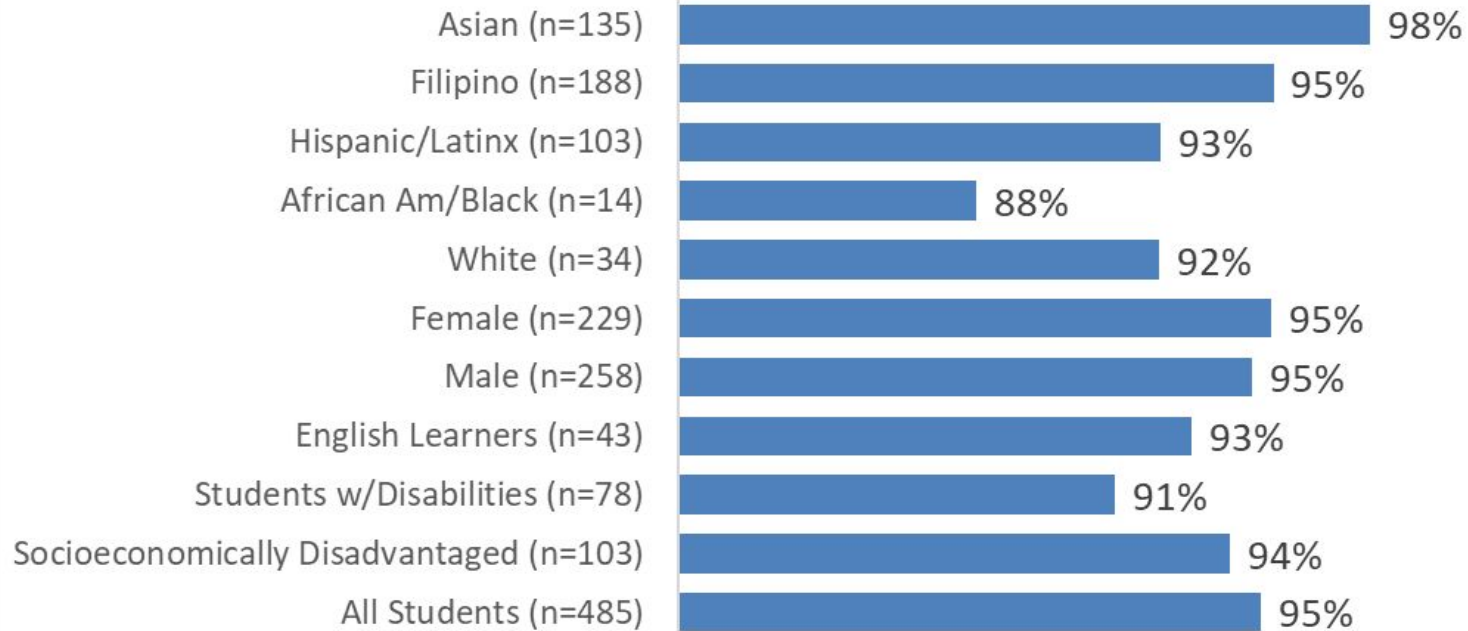
Students by Program Group

Student Group	#	%
Female	229	47%
Male	258	53%
English Learners	43	9%
Students with Disabilities	78	16%
Socioeconomically Disadvantaged	103	21%
Total	487	

WESTBOROUGH MIDDLE - CURRENT STUDENT POPULATION

WESTBOROUGH MIDDLE - ATTENDANCE SNAPSHOT

AVERAGE ATTENDANCE BY COHORT GROUP: (09/26/22 - 10/28/22)



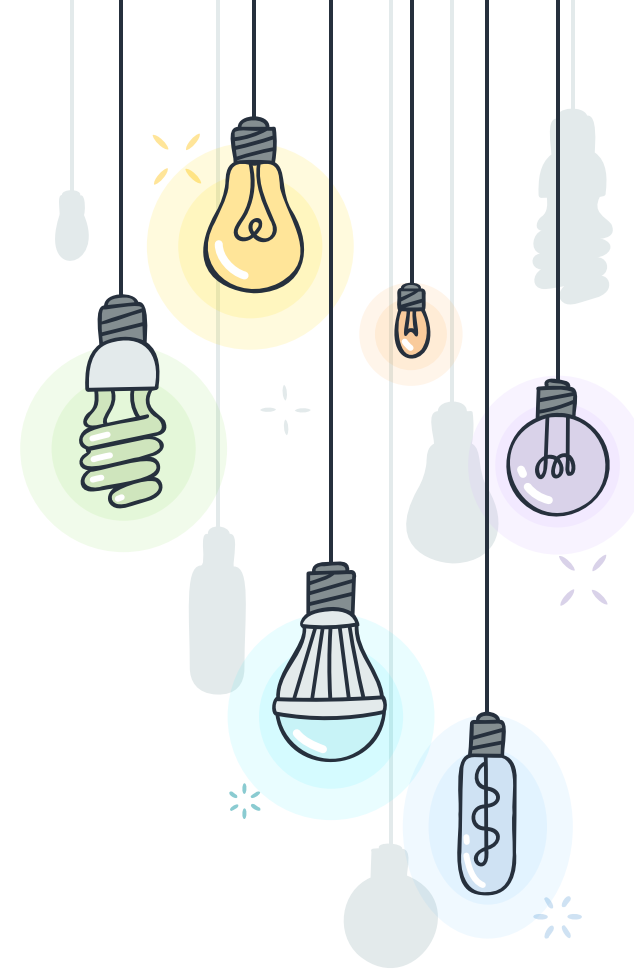
** To protect student privacy, data for student groups with fewer than 10 students is not displayed. For WMS, this includes the Native American Indian/Alaska Native (n=3), Native Hawaiian/Pacific Islander (n=9), and Decline to State (n=1) groups.*



21-22 CAASPP DATA

* STUDENTS TESTED IN 21-22

Grade Level	# of Students Tested	Percent of Students Tested
6	177	95.50%
7	177	94.90%
8	179	97.20%



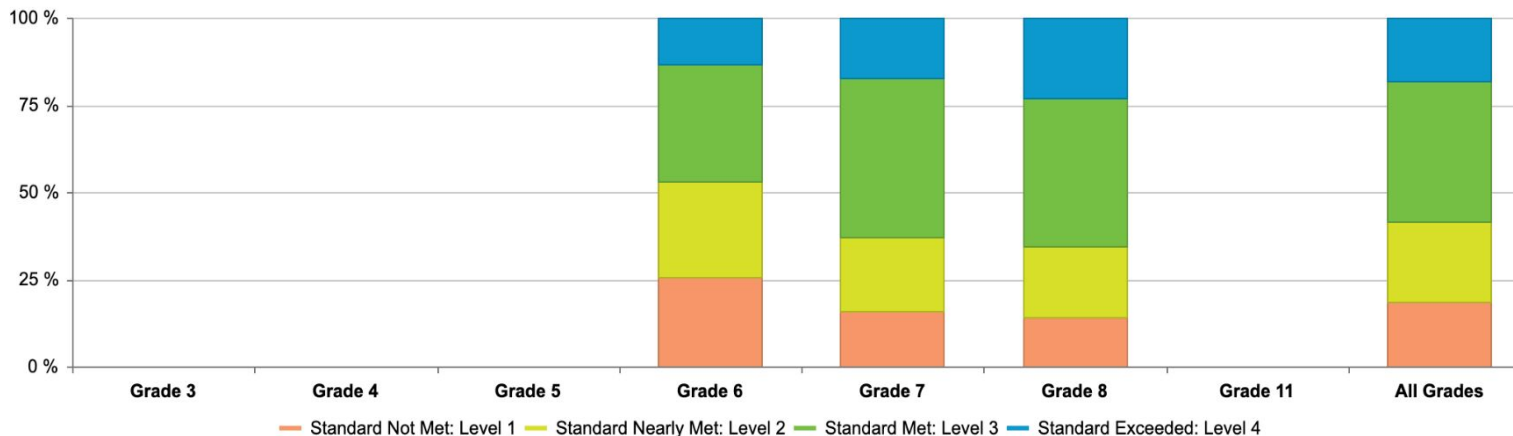
2021–22 Detailed Test Results

Results for All Students

ENGLISH LANGUAGE ARTS/LITERACY

▼ Data Detail - All Students (accessible data)

Achievement Level Distribution



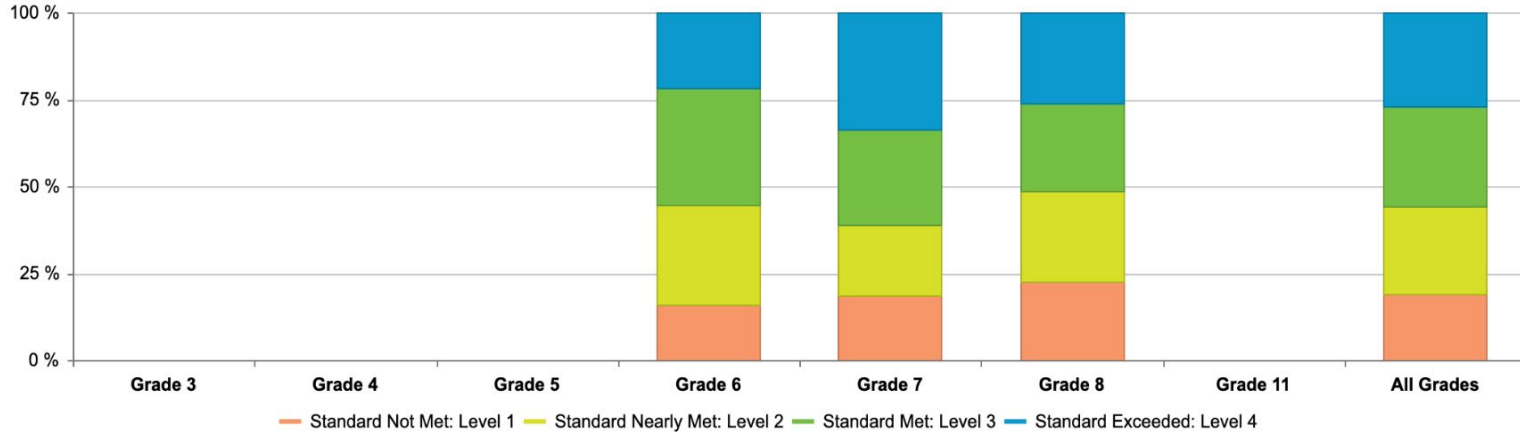
Standard Exceeded: Level 4 ⁱ	N/A	N/A	N/A	13.45 %	17.39 %	23.08 %	N/A	17.96 %
Standard Met: Level 3 ⁱ	N/A	N/A	N/A	33.33 %	45.34 %	42.60 %	N/A	40.32 %
Standard Nearly Met: Level 2 ⁱ	N/A	N/A	N/A	27.49 %	21.12 %	20.12 %	N/A	22.95 %
Standard Not Met: Level 1 ⁱ	N/A	N/A	N/A	25.73 %	16.15 %	14.20 %	N/A	18.76 %

2021–22 Detailed Test Results Results for All Students

MATHEMATICS

▼ Data Detail - All Students (accessible data)

Achievement Level Distribution



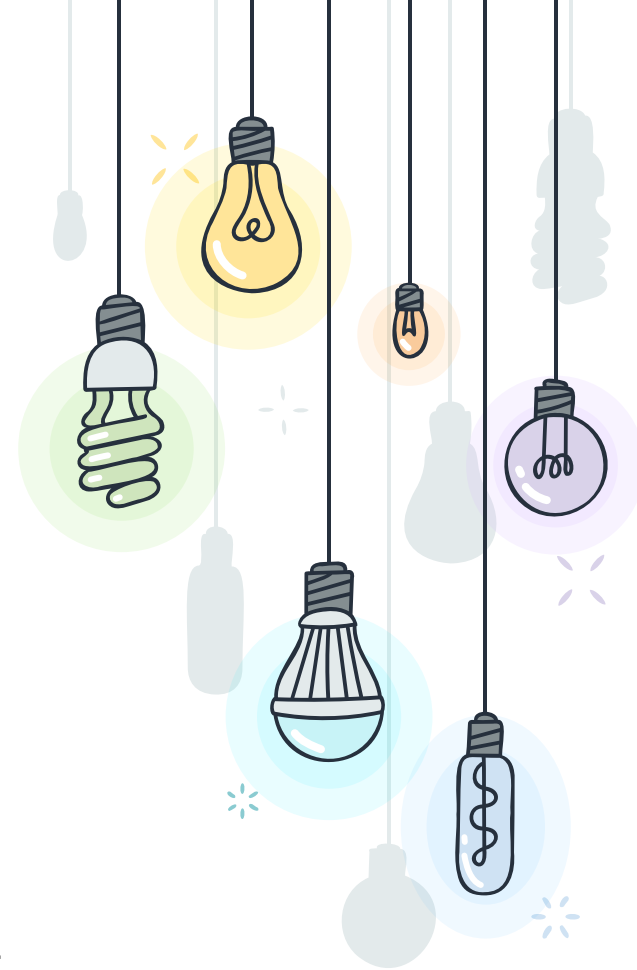
Standard Exceeded: Level 4 i	N/A	N/A	N/A	21.76 %	33.54 %	26.04 %	N/A	27.00 %
Standard Met: Level 3 i	N/A	N/A	N/A	33.53 %	27.33 %	25.44 %	N/A	28.80 %
Standard Nearly Met: Level 2 i	N/A	N/A	N/A	28.82 %	20.50 %	26.04 %	N/A	25.20 %
Standard Not Met: Level 1 i	N/A	N/A	N/A	15.88 %	18.63 %	22.49 %	N/A	19.00 %

✿ 2021-22 DATA

Either "standard met" or "standard exceeded"

- ✦ 6th Grade: 46.78% of students in ELA & 55.29% in Math
- ✦ 7th grade: 62.73% of students in ELA & 60.87% in Math
- ✦ 8th grade: 65.68% of students in ELA & 51.48% in Math

- ✦ Overall: 58.28% in ELA & 55.80% in Math
 - × 41.71% not meeting standards in ELA yet
 - × 44.20% not meeting standards in Math yet





Either "standard met" or "standard exceeded"

Grade	20-21 ELA	21-22 ELA	% of Change	Rate of change ELA	20-21 Math	21-22 Math	% of Change	Rate of change Math
6th	54.78	46.78	-8.0%	14.6% decrease	56.03	55.29	-0.74%	1.32% decrease
7th	63.25	62.73	-0.52%	0.82% decrease	54.38	60.87	6.49%	11.93% increase
8th	62.37	65.68	3.31%	5.30% increase	57.72	51.48	-6.24%	10.81% decrease
Overall @ WMS	60.47	58.28	-2.19%	3.62% decrease	56.77	55.80	-0.97%	1.70% decrease

2021-22 MATH & ELA DATA WHEN COMPARED TO 20-21

❁ RESOURCES TO SUPPORT OUR STUDENTS - ALL STUDENTS

Academic Center:

- ★ 3 days a week for an hour after school
- ★ Teacher supported, including Specialized Academic Support
- ★ Peer Tutors available

IXL: Targeted support in Math, History, & ELA

- ★ Accessible through the student portal, adaptive

Tutorial Support:

- ★ Paper Tutorial- 24/7/365 support w/ homework & writing assignments

Counseling Support:

- ★ Check-in meetings, RTI program/Student Study Team meetings,, Mental Health Resources (YSB, Care Solace, DayBreak), Home visits



RESOURCES TO SUPPORT OUR STUDENTS - ALL STUDENTS



✧ Response to Intervention (RTI)

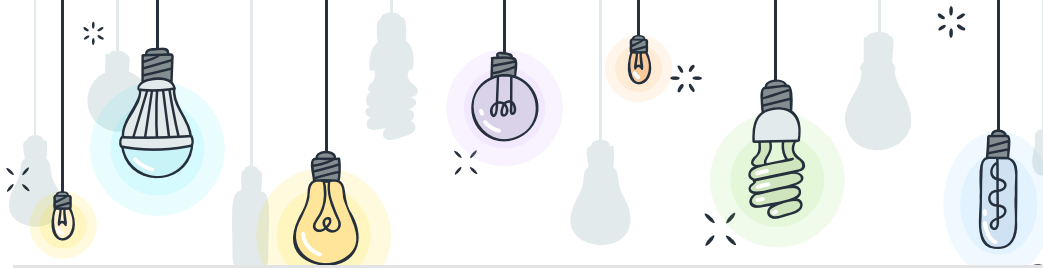
What We Do?

Grade levels meet to review student progress monthly

- ★ Linking RTI, Mental Health supports, & PBIS to help students succeed
- ★ Streamlined and maintain our RTI Tracking documents
 - Use of Common assessments to track student progress in ELA/Math

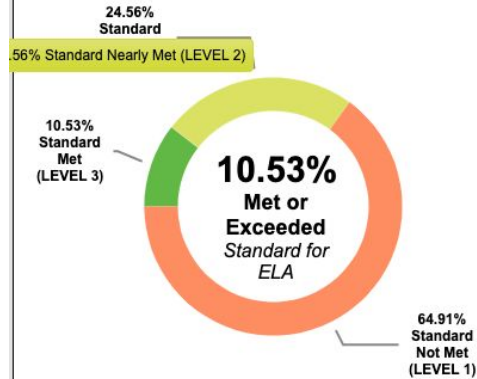
Goals for 2022-23

- ★ Strengthen RTI & Student Study Team (SST) connection
- ★ Streamline Tier 1, 2 , & 3 supports (academic & behavioral) in all classrooms & across grade levels



ELA

Percent of students within each achievement level

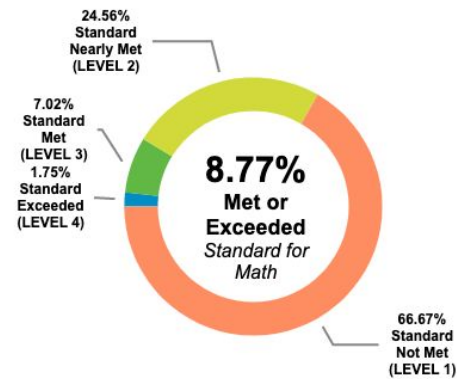


Standard Exceeded (LEVEL 4) is 0.00%

[VIEW ELA DETAILED TEST RESULTS](#)

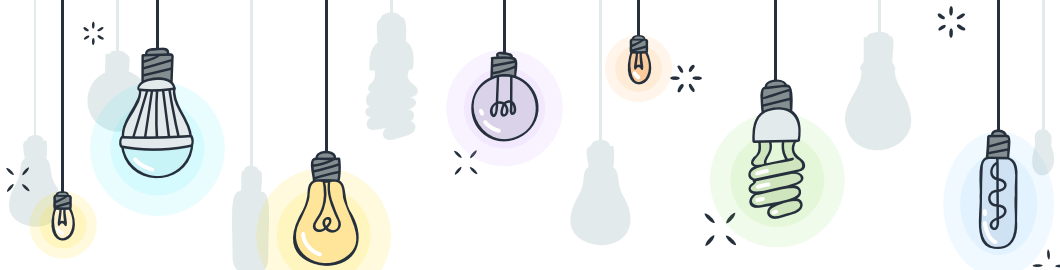
Mathematics

Percent of students within each achievement level



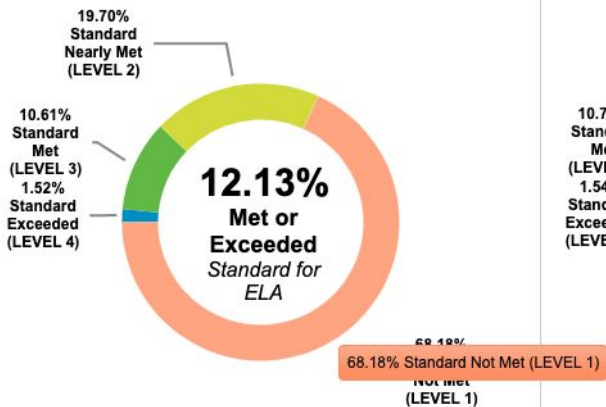
[VIEW MATH DETAILED TEST RESULTS](#)

2020-21 STUDENTS WITH DISABILITIES STATUS



ELA

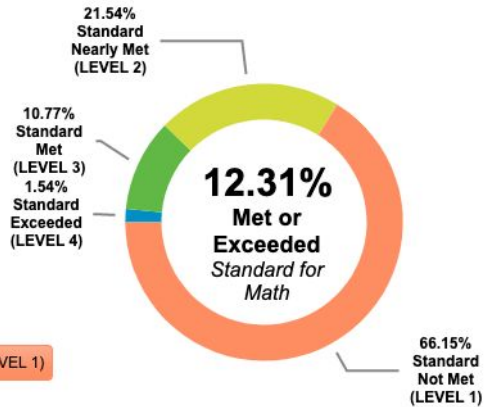
Percent of students within each achievement level



[VIEW ELA DETAILED TEST RESULTS](#)

Mathematics

Percent of students within each achievement level



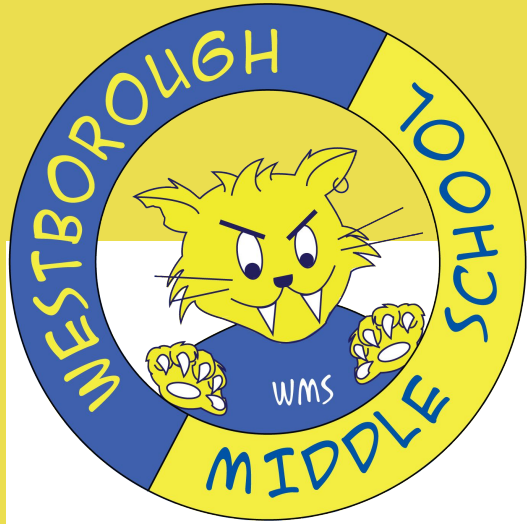
[VIEW MATH DETAILED TEST RESULTS](#)

2021-22 STUDENTS WITH DISABILITIES STATUS

ADDITIONAL SUPPORTS FOR STUDENTS WITH DISABILITIES

- ★ Specialized Academic Center, facilitated by Ed. Specialists
- ★ Full Resource Program (push-in support and pull-out support)
 - Allows students equitable access to the General Education provided at Westborough
- ★ Mainstreaming program
- ★ Needs based approach to placing students
- ★ Use of district approved intervention curriculum
 - *Spire* (reading), *Unique* (Multiple subjects), IXL, etc.
- ★ Team meetings in addition to Annual IEP (as needed)





Thank you!
Questions?
