



SUNSHINE GARDENS ELEMENTARY SCHOOL

Teaching and Learning Presentation
Presented by Leticia Gonzalez, Principal

February 9, 2023



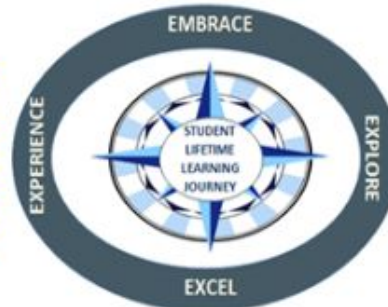
District Goals

LCAP GOAL 1

Academic Achievement

The district will provide a high quality curricular program for students that will raise student proficiency on the California Common Core State Standards as measured by overall academic achievement on state assessments, CA Dashboard results, interim assessment data and ELPAC/Reclassification data.

SSFUSD Vision



LCAP GOAL 4

Special Education

The district will provide high quality curricular programs for students with IEPs that will raise student engagement in school and proficiency on the California Common Core State Standards as measured by overall academic achievement on state assessments, and engagement rates.

LCAP GOAL 2

Professional Development

Identified classified staff, certificated and administrative staff will participate in professional development to create capacity and expertise in curriculum program implementation based on the development of scope and sequence as measured by walkthrough observations and other evidence (artifacts and student work).

LCAP GOAL 3

Student, Parent & Community Engagement

Improve parent school engagement through an increase in participation in site and district parent groups such as SSC, PTSA, DELAC, ELAC, AAPAC as well as in other parent meetings as measured by attendance sign in sheets.

District Priorities

A) Improve Curriculum, Instruction & Assessment

B) Bolster Professional Learning and Collaboration

C) Strengthen Leadership Capacity

SSFUSD

STRENGTHENING OUR SYSTEMS

the
GAS TANK
BENCHMARKS
checking student progress toward goals.

HOW CAN WE LEVERAGE DATA?

the
STEERING WHEEL
INSTRUCTION
guiding our learning objectives
ENGAGES US + TAKES US FORWARD

the
GPS
NAVIGATION
our goals
LCAP, DEPT.,
SITE, TEAM, TCHR.

FFME
A PROCESS TO DETERMINE WHAT TOOL, PRACTICE, or SERVICE WILL HELP US SOLVE OUR IDENTIFIED NEED

WHAT IS OUR ACTION PLAN?

HOW DO WE REFLECT + RELENTLESSLY FOLLOW UP?

the
SEATS
CURRICULUM
defines the skills to be taught
STANDARDS, RIGOR, RELEVANCE



the
ENGINE
PERFORMANCE MANAGEMENT MEETINGS
showcasing data + progress
ILTs, PLCs, DEPT. MEETINGS

Experience
Explore
Embrace
Excel

the
WHEELS
SYSTEMS of ASSESSMENT
sets the pace

WHAT QUESTIONS HELP US DETERMINE ROOT CAUSES of PERFORMANCE?

the
MIRRORS
PROFESSIONAL LEARNING SYSTEM
reflecting + growing in our professional practices





MISSION STATEMENT

Prepare all students with 21st-century skills and the foundation to become Global Citizens. The staff, families, and community work together to create a safe and engaging environment for the whole child that ensures student success, builds character, and celebrates diversity. We encourage our students to be their best selves and to reach their goals.



KINDNESS
AWARD

School Priorities

LCAP 1 ELA & Math

ELA and Math benchmarks will increase by 10% as measured by beginning and end of year data (Literably/Math Assessments) for all student groups –ELs, SPED, and students identified as socially economically disadvantage.

LCAP 2 Professional Development

Staff will continue professional growth in analyzing data, small group instruction, literacy and writing strategies, in order to better support our students.

LCAP 3 Parent and Community Engagement

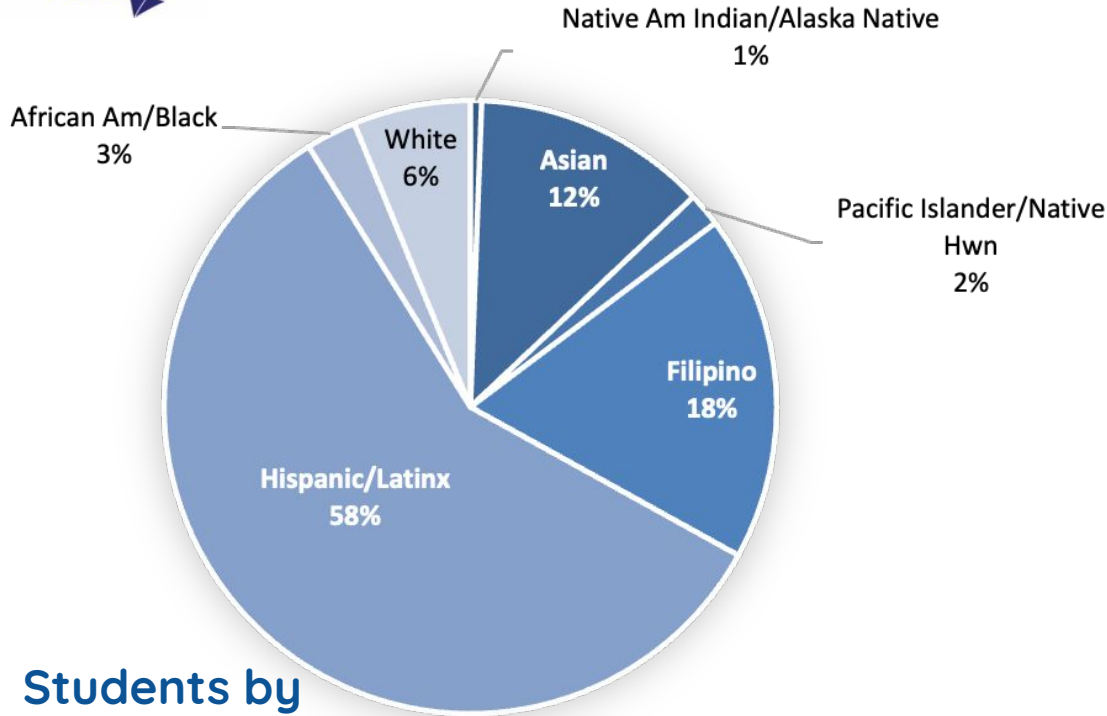
Sunshine Gardens staff will successfully engage families of the most underserved student subgroups (ELs, Low SES, and Special Education).

LCAP 4 Special Education

Sunshine Gardens will Increase by 1% each year toward District/State goal in Special Education for students to be in 80% or more in the General Education Setting. Allowing for opportunities



STUDENT POPULATION



Student Group	#	%
Female	184	54%
Male	156	46%
English Learners	131	39%
Students w/Disabilities	60	18%
Socioeconomically Disadvantaged	179	53%
Total	340	

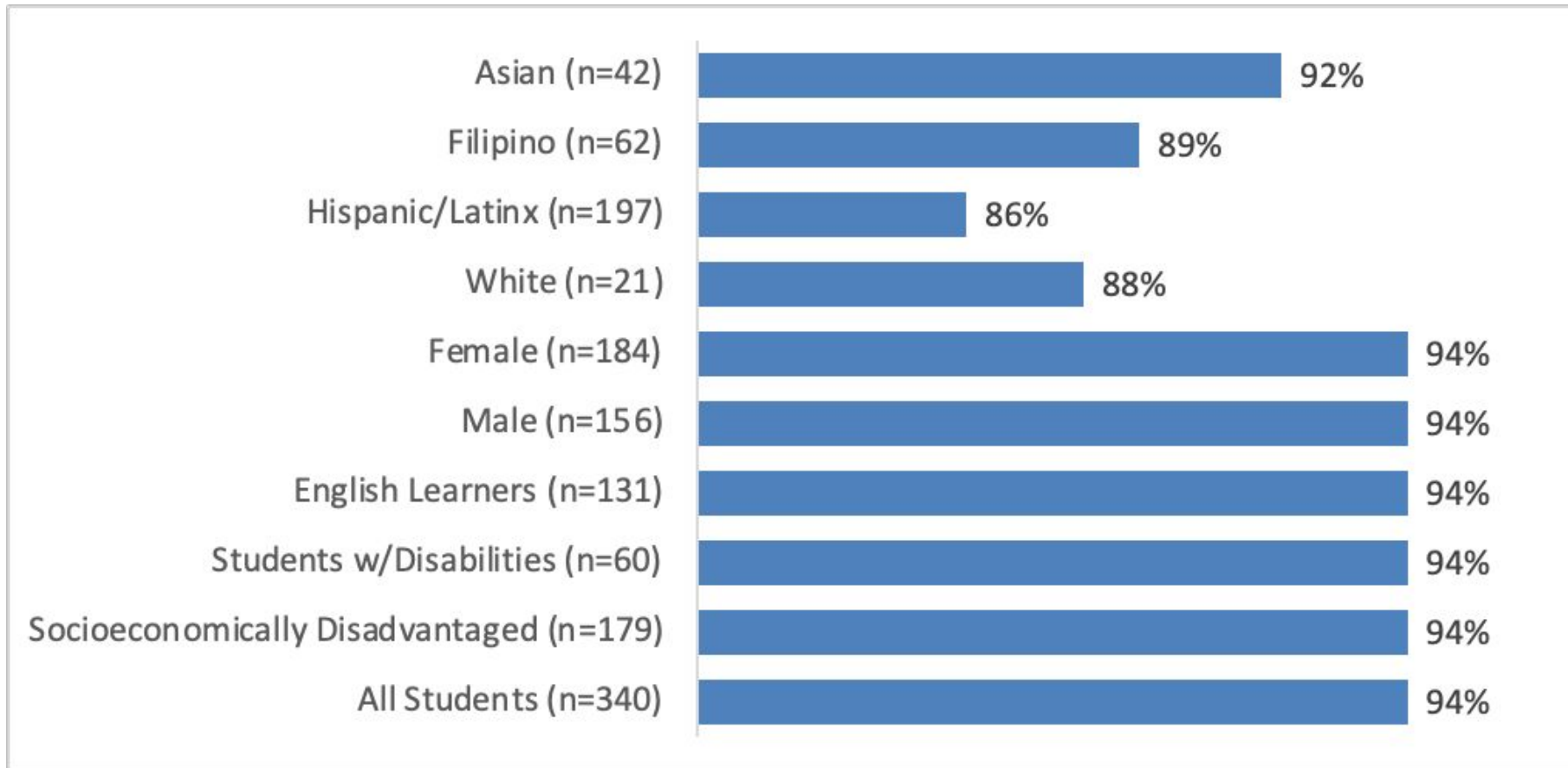
*2 students in Virtual Independent Study

Students by Grade Level

TK	K	1st	2nd	3rd	4th	5th
21	49	49	45	66	61	49



Average attendance by cohort group (12/12/2022 - 01/20/22)



** To protect student privacy, data for student groups with fewer than 10 students is not displayed. For SGENS, this includes the Native American Indian/Alaska Native (n=8), Pacific Islander/Native Hawaiian (n=8), African American/Black (n=9), and Decline to State (n=2) groups.*

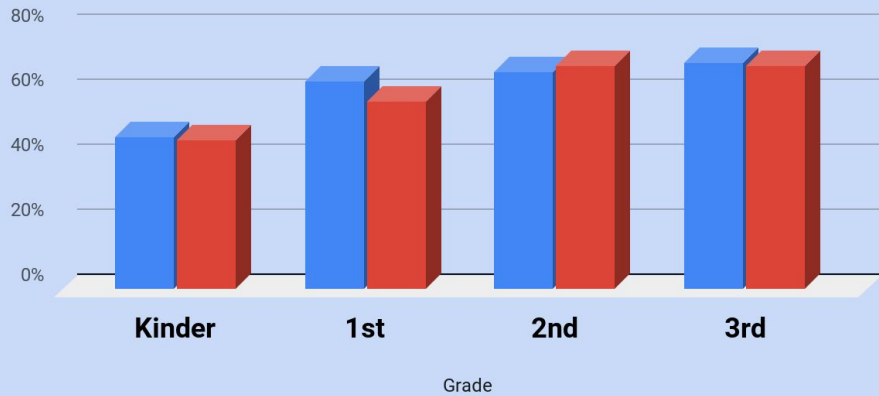


Literably Data & DIBELS (Beginning of Year)



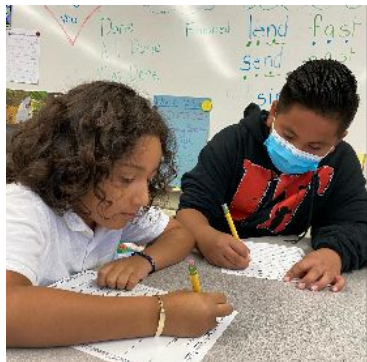
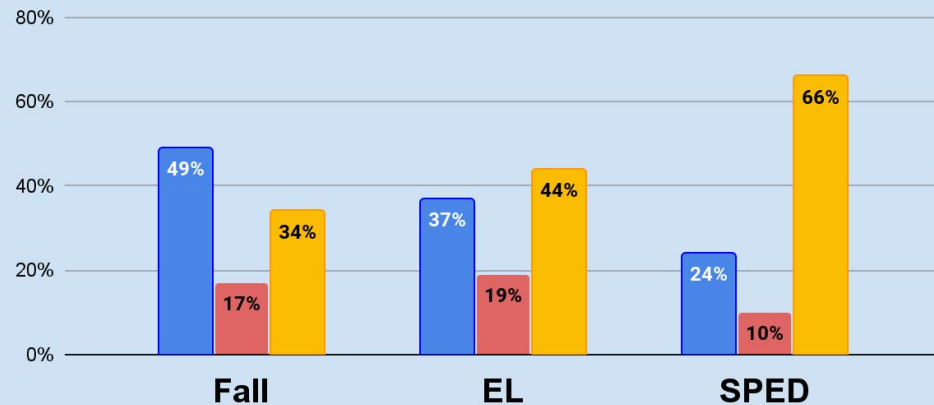
DIBELS Fall 2022 Data

■ SSG ■ SSFUSD



Literably Results Fall 2022

■ At or Above ■ Approaching ■ Below





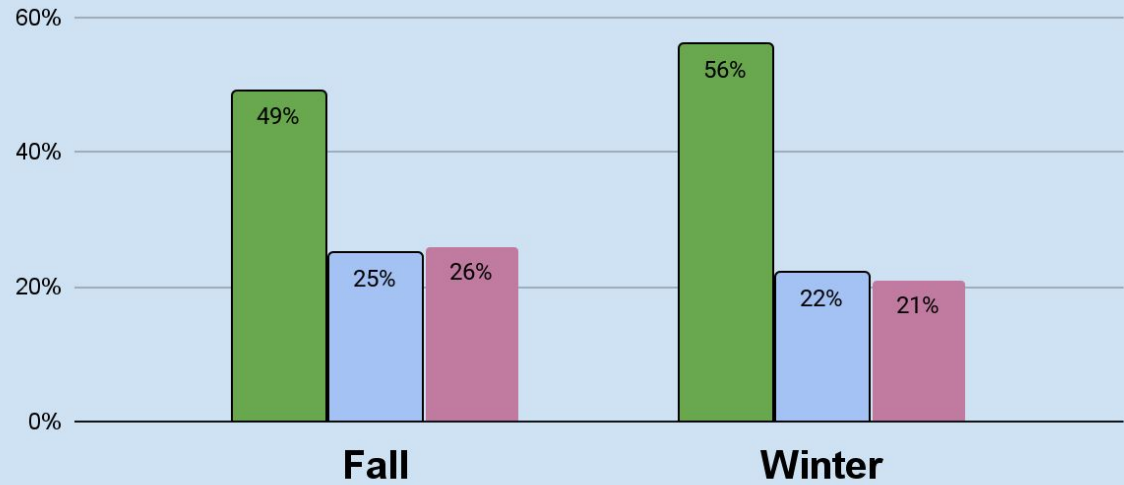
IXL MATH DATA



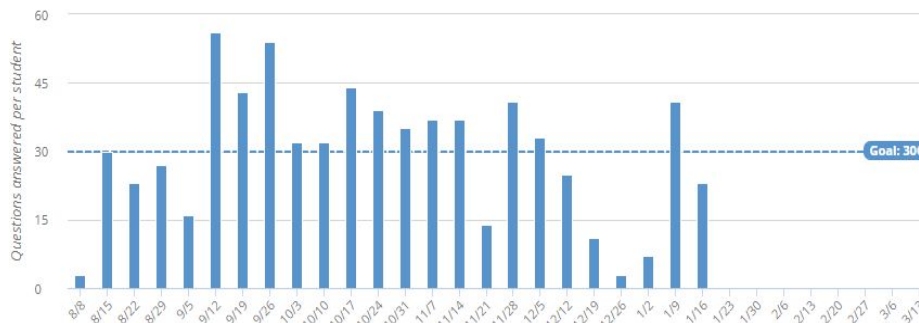
Making Meaning of Numbers

IXL Results Fall & Winter 2022

■ At Grade Level ■ Far Below ■ Below Grade



THE IXL EFFECT



Schools across the United States are experiencing the IXL Effect, and you can, too. Research shows that answering at least 30 questions per week has a measurable impact on student outcomes.

Already meeting that goal? Aiming for 60 or 130 questions per week has been shown to have an even bigger impact on student success.

[Learn more](#) about the IXL Effect.

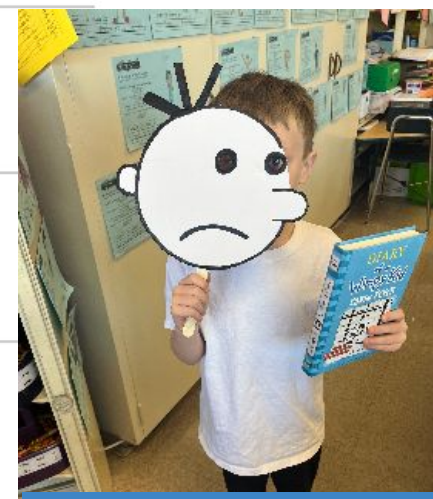
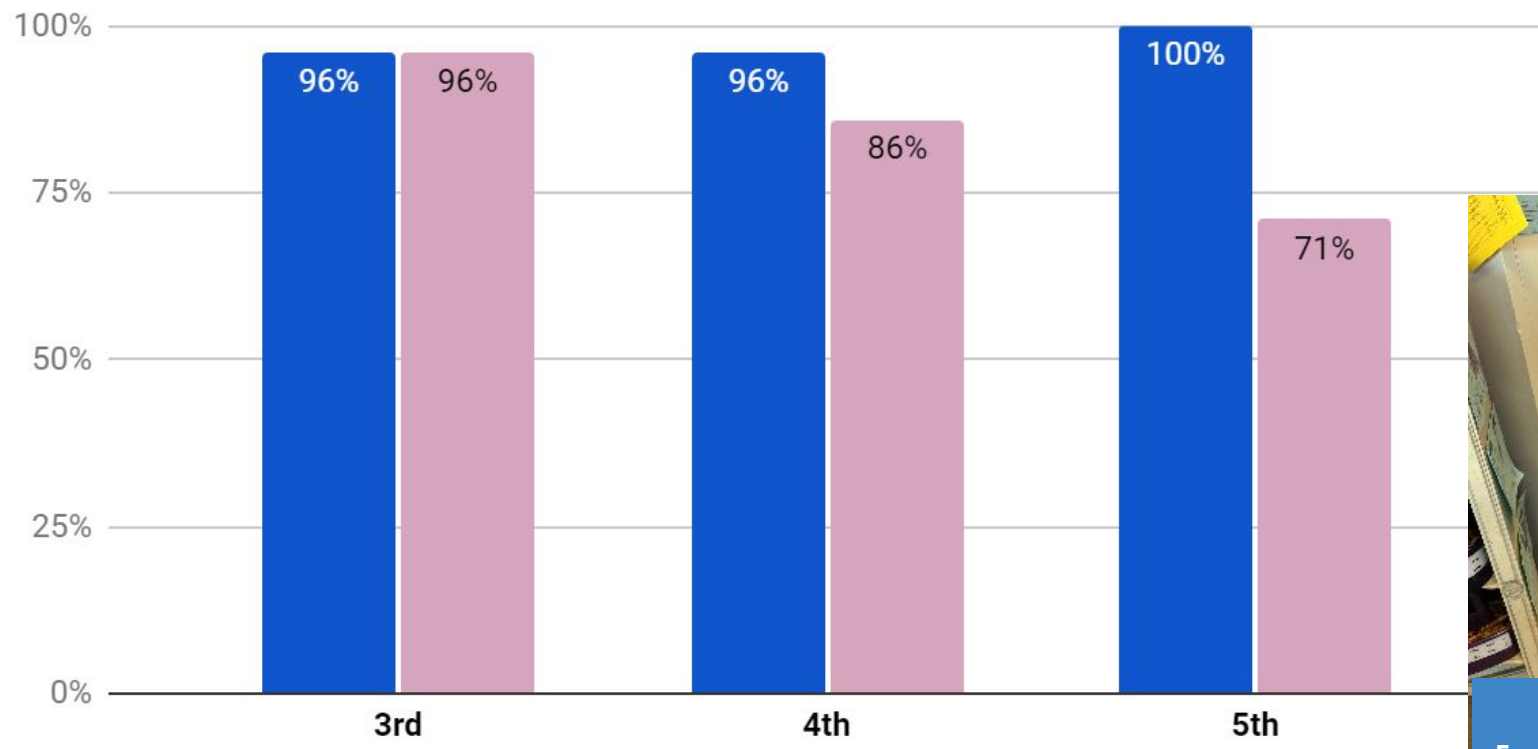


CAASPP DATA



CAASPP Participation

■ 2021-2022 ■ 2020-2021

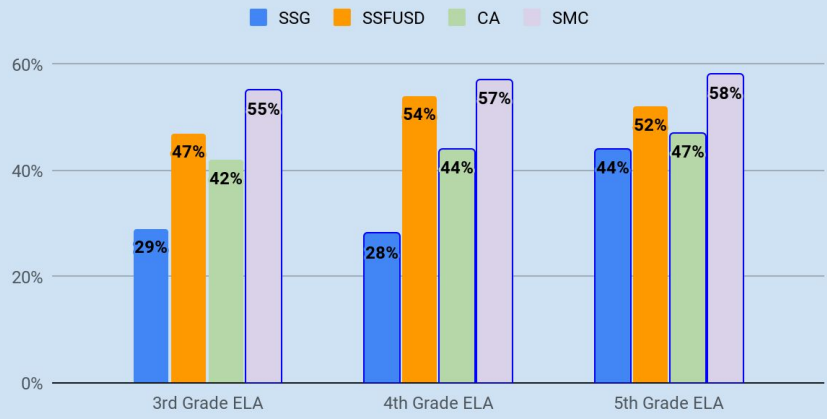


100th Day of School
Favorite Book Character Day

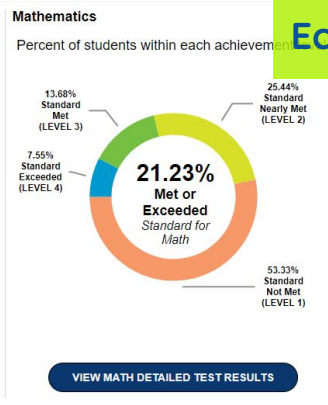
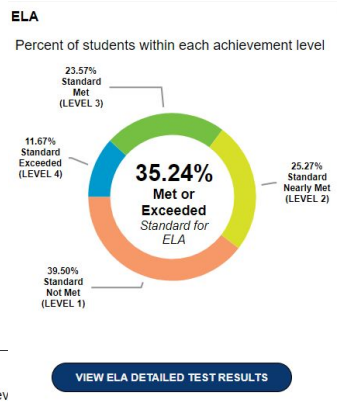
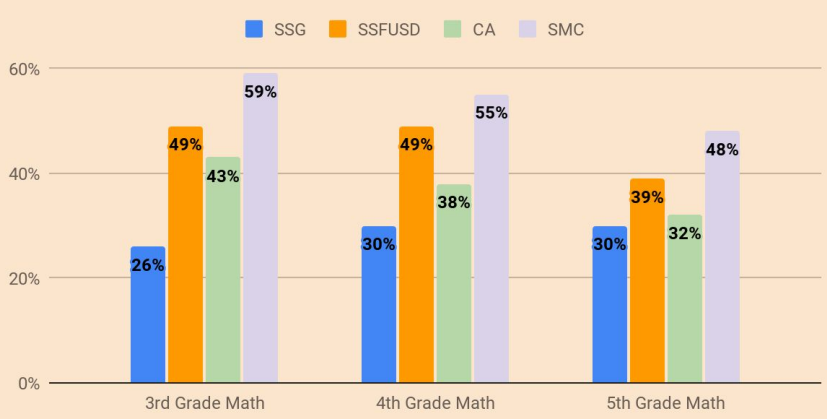
CAASPP ELA DATA

CAASPP MATH DATA

CAASPP ELA--SUNSHINE GARDENS/SSFUSD/CA Standards Met or Exceeded

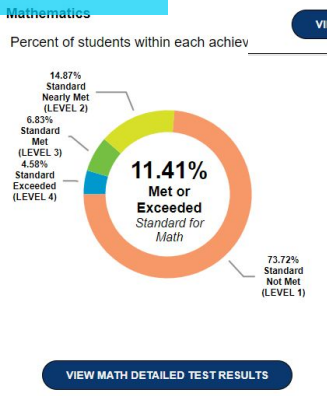
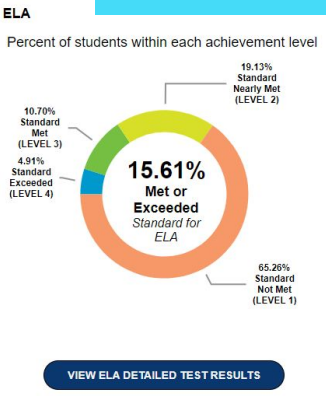


CAASPP MATH--SUNSHINE GARDENS/SSFUSD/CA Standards Met or Exceeded

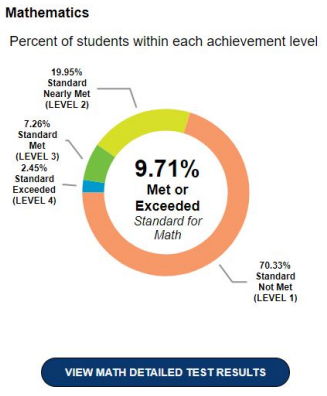
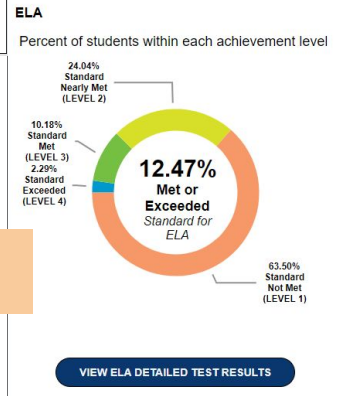


Economically Disadvantaged

Special Education



English Learners



English Language Learner Data



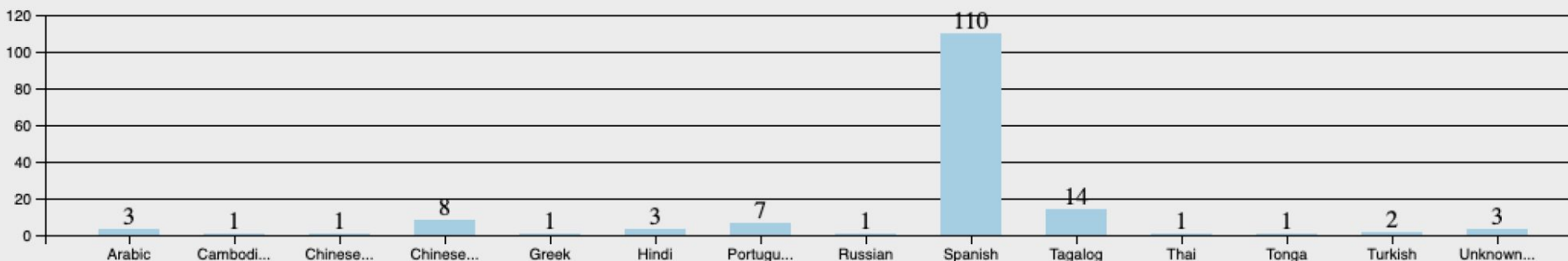
- 127 EL Students at Sunshine Gardens
- 11 Students Reclassified as RFEP (last year 5 were reclassified)
- 39% School Population EL, RFEP students

Overall Level



Languages Spoken at Sunshine Gardens

Home Language

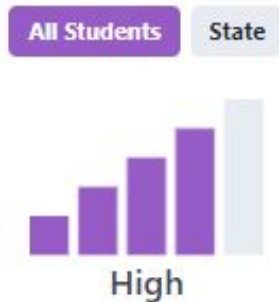


CA Dashboard Data on English Learners



Stallion Buddies working on a collaborative project

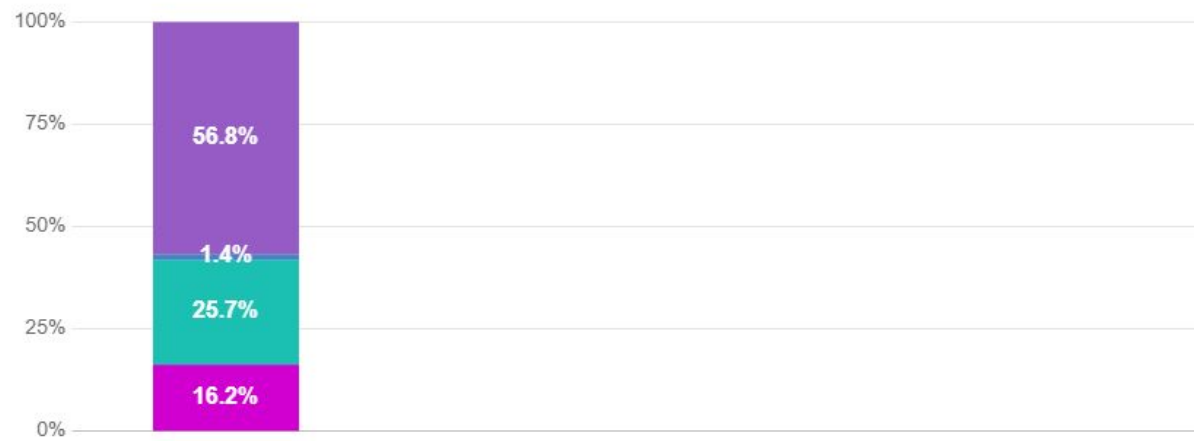
English Learner Progress



58.1% making progress towards English language proficiency

Student English Language Acquisition Results

The percentage of current EL students who progressed at least one ELPI level, maintained ELPI level 4, maintained lower ELPI levels (i.e, levels 1, 2L, 2H, 3L, or 3H), or decreased at least one ELPI Level.



- ELs Who Decreased at Least One ELPI Level
- ELs who Maintained ELPI Level 4
- ELs who Maintained ELPI Levels 1, 2L, 2H, 3L, 3H
- ELs Who Progressed at Least One ELPI Level



Small Guided Reading Groups-Structured Literacy Block Components/Designated ELD Math



Step 1: Staff Survey

Step 2: Identifying Teacher Needs/Student Data

Step 3: Providing Professional Development

Step 4: Walkthroughs and Feedback

Tool-co-created by Instructional Leadership

Team-for continuous support around needs

Step 5: Continued Professional Development

Step 6: Learning Walks-Teachers see teachers in action

Step 7: Continued Professional Development



Teachers engaged in professional development on math strategies



Power Hour:
Power Hour program is an hour students get to complete and receive support with their homework from their peers and staff.



D.E.I.B Read Alouds: Students read books that focus on Diversity, Equity, and Inclusion in order to create a connection through literature.



S.E.L Second Step:
Students learn to manage and communicate their emotions through the program, Second Step.



GENE ACADEMY





Community Engagement & Support



Mindfulness Teacher Training
PBIS Character Traits Awards
Morning Positive Announcements
Opera A La Carte
Outdoor Education
Parent Beginning/Mid/End of year survey
Girls on the Run
Partnership with CHP and SSFPD
Red Ribbon Week
Reading Buddies
Art in Action
Staff Stallion
PTA Fun Run
SRTS Walking & Biking Assemblies
Ruby Bridges Walk to School Day
Science for Scientists
GeneAcademy
Genentech Campus Beautification
Star Vista & YSB Counseling
UC Cal Fresh CATCH Recess Program
Work Experience El Camino HS



Ruby Bridges Assembly



Exploratorium Field Trip



Science for Scientists



Opera Together



Red Ribbon Week with CHP

THANK YOU TO ALL OUR PARENT VOLUNTEERS!!



Smart
Talented
Artistic
Learners
Loyal
Inspirational
Original
Nice
Sunshine

Holly Anderson
Justine Crescencio
Jonathan Lassila
Nefertiti Renta
Katrina San Felipe
Brenda Sanchez
Ericka Vallejo Sanchez