



Monte Verde
Elementary
2022-2023





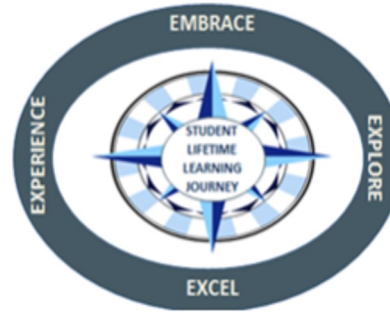
District Goals

LCAP GOAL 1

Academic Achievement

The district will provide a high quality curricular program for students that will raise student proficiency on the California Common Core State Standards as measured by overall academic achievement on state assessments, CA Dashboard results, interim assessment data and ELPAC/Reclassification data.

SSFUSD Vision



LCAP GOAL 4

Special Education

The district will provide a high quality curricular programs for students with IEPs that will raise student engagement in school and proficiency on the California Common Core State Standards as measured by overall academic achievement on state assessments, and engagement rates.

LCAP GOAL 2

Professional Development

Identified classified staff, certificated and administrative staff will participate in professional development to create capacity and expertise in curriculum program implementation based on the development of scope and sequence as measured by walkthrough observations and other evidence (artifacts and student work)

LCAP GOAL 3

Student, Parent & Community Engagement

Improve parent school engagement through an increase in participation in site and district parent groups such as SSC, PTSA, DELAC, ELAC, AAPAC as well as in other parent meetings as measured by attendance sign in sheets.

District Priorities

A) Improve Curriculum, Instruction & Assessment

B) Bolster Professional Learning and Collaboration

c) Strengthen Leadership Capacity

SSFUSD

STRENGTHENING OUR SYSTEMS

the GAS TANK
BENCHMARKS
checking student progress toward goals.

HOW CAN WE LEVERAGE DATA?

the STEERING WHEEL
INSTRUCTION
guiding our learning objectives
ENGAGES US + TAKES US FORWARD

the GPS
NAVIGATION
our goals
LCAP, DEPT., SITE, TEAM, TCHR.

FFME -
A PROCESS TO DETERMINE WHAT TOOL, PRACTICE, or SERVICE WILL HELP US SOLVE OUR IDENTIFIED NEED

WHAT IS OUR ACTION PLAN?

HOW DO WE REFLECT + RELENTLESSLY FOLLOW UP?

the SEATS
CURRICULUM
defines the skills to be taught
STANDARDS, RIGOR, RELEVANCE



the ENGINE
PERFORMANCE MANAGEMENT MEETINGS
showcasing data + progress of
ILTs, PLCs, DEPT. MEETINGS

Experience
Explore
Embrace
Excel

the WHEELS
SYSTEMS of ASSESSMENT
sets the pace

WHAT QUESTIONS HELP US DETERMINE ROOT CAUSES of PERFORMANCE?

EQUITY

the MIRRORS
PROFESSIONAL LEARNING SYSTEM
reflecting + growing in our professional practices

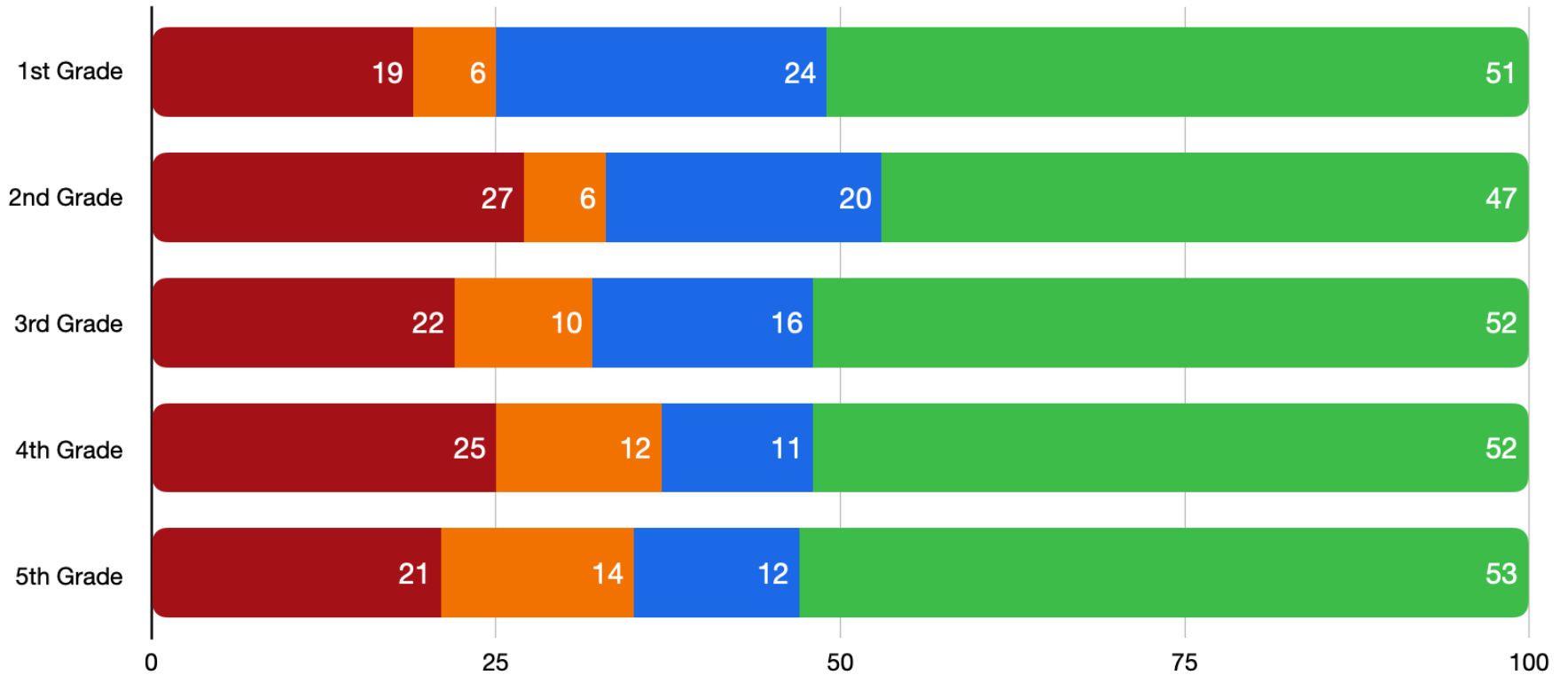


Literably Data

Literably

Does Not Meet Approaching Meets Exceeds

Mid Year Literably Scores





CAASPP Data

Academic Indicator - English-Language Arts (detail)



(Numbers indicate points above/below standard for cohort average)

Student Group	Monte Verde Elementary School			SSFUSD		State	
	# students	Status	Result	Status	Result	Status	Result
Asian	91	Very High	+77.2	Very High	47.8	Very High	63
Filipino	72	Very High	+46.9	High	34.4	High	42.9
Native Hawaiian/Pacific Islander	7	*	*	Low	-43.7	Low	-29.1
Hispanic/Latinx	50	High	+29.2	Low	-35	Low	-38.6
African American/Black	3	*	*	Low	-54.7	Low	-57.7
White	21	No level	+43.1	Medium	0.8	High	21.9
English Learners	77	Very High	+53.5	Low	-37.6	Low	-61.2
Students w/Disabilities	32	Low	-32.5	Very Low	-91.9	Very Low	-97.3
Socioeconomically Disadvantaged	35	High	+31.8	Low	-39.2	Low	-41.4
All Students	268	Very High	+53	Medium	-2.2	Low	-12.2

Academic Indicator - Mathematics (detail)



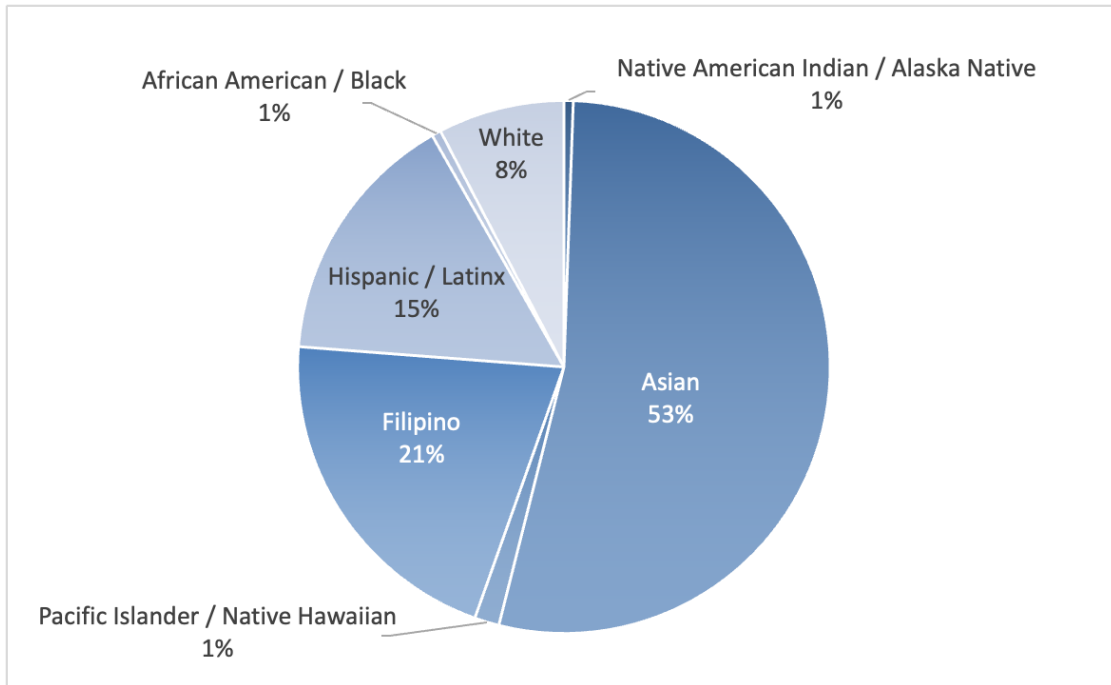
(Numbers indicate points above/below standard for cohort average)

Student Group	Monte Verde Elementary School			SSFUSD		State	
	# students	Status	Result	Status	Result	Status	Result
Asian	91	Very High	+79.7	Very High	42.3	Very High	48.4
Filipino	72	High	+28.3	High	3.7	High	2.7
Native Hawaiian/Pacific Islander	7	*	*	Low	-66.2	Low	-71.3
Hispanic/Latinx	51	Medium	-2	Low	-72.1	Low	-83.4
African American/Black	3	*	*	Very Low	-100.2	Very Low	-106.9
White	21	No level	+37.3	Low	-28.9	Medium	-13.4
English Learners	77	Very High	+51.3	Low	-57.6	Low	-92
Students w/Disabilities	32	Low	-25.9	Very Low	-119.3	Very Low	-130.8
Socioeconomically Disadvantaged	35	High	+24.4	Low	-72	Low	-84
All Students	268	Very High	+42.5	Low	-32.4	Low	-51.7



Attendance Data

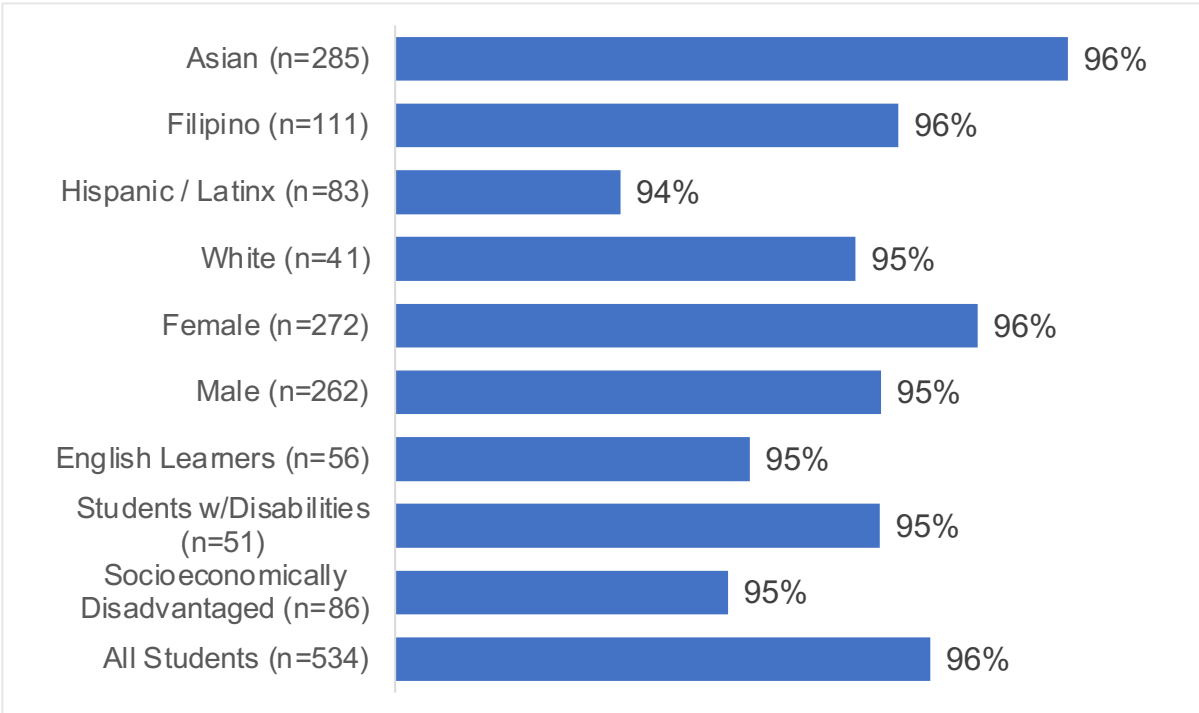
Monte Verde Elementary



Students by Grade Level	#
Kindergarten	81
1st	86
2nd	94
3rd	92
4th	85
5th	96

Student Group	#	%
Female	272	51%
Male	262	49%
English Learner	56	10%
Students w/Disabilities	51	10%
Socioeconomically Disadvantaged	86	16%
All Students	534	

Monte Verde Attendance Snapshot (3/06 - 4/07/2023)



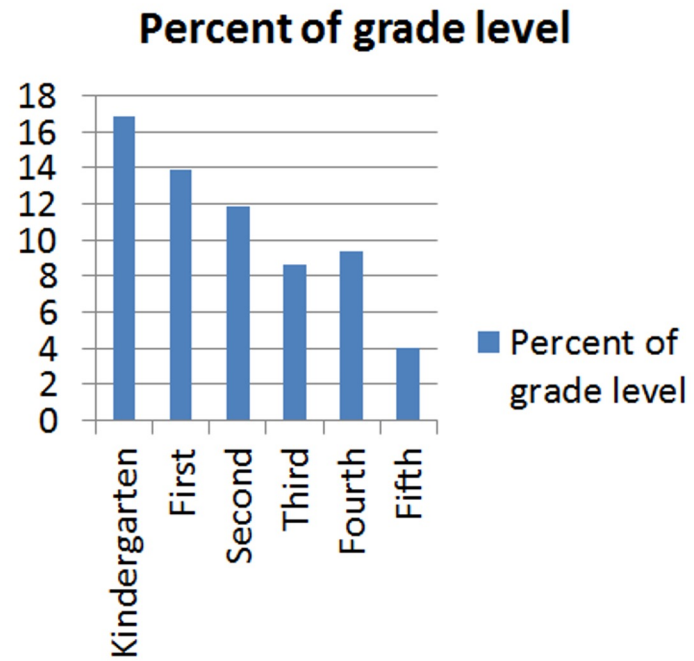
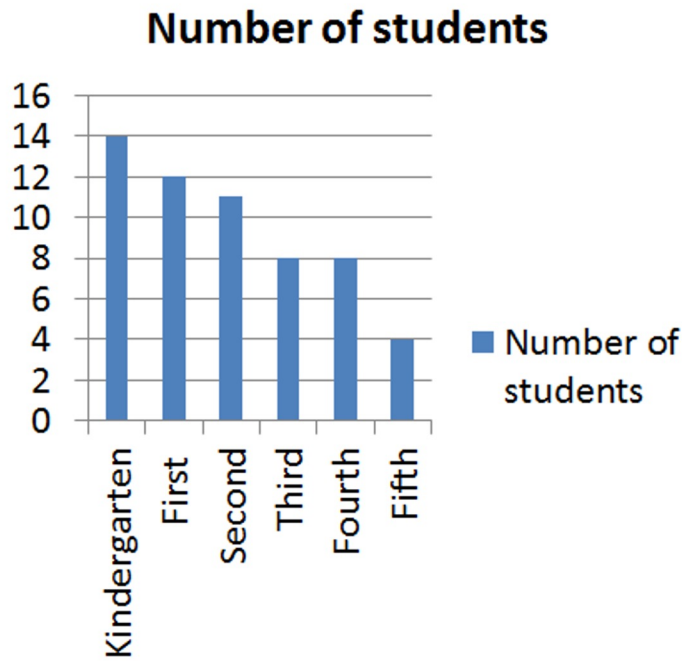
** To protect student privacy, data for student groups with fewer than 10 students is not displayed. For Monte Verde ES, this includes the Native American Indian/Alaska Native (n=3), African American/Black (n=3), and Pacific Islander/Native Hawaiian (n=8) groups.*



Chronic Absenteeism (detail)

Student Group	Monte Verde School			SSFUSD		State	
	# students	Status	Result	Status	Result	Status	Result
Asian	213	Low	4.7%	Medium	7.6%	High	11.5%
Filipino	131	Medium	8.4%	High	16.7%	Very High	16.2%
Native Hawaiian/Pacific Islander	10	*	*	Very High	37.6%	Very High	43.9%
Hispanic/Latinx	89	High	19.1%	Very High	33.1%	Very High	35.8%
African American/Black	4	*	*	Very High	38.7%	Very High	42.9%
White	40	High	12.5%	Very High	22.0%	Very High	21.9%
English Learners	109	Low	3.7%	Very High	30.4%	Very High	33.6%
Students w/Disabilities	55	High	14.5%	Very High	32.2%	Very High	39.6%
Socioeconomically Disadvantaged	73	Very High	23.3%	Very High	34.6%	Very High	37.4%
All Students	547	Medium	9.9%	Very High	24.7%	Very High	30.0%

Chronic Absenteeism by Grade Level





What's Going
On?



Facilities





Learning





Learning





Walk-a-thon





Celebrations





Spirit Days





Parent/ Volunteers





LEAP



Thanks to our MV TEAM



