

# Ponderosa Elementary

2023-2024

## Teaching and Learning Presentation



Presented by:

Julie Erskine

Principal, Ponderosa Elementary

<https://ponderosa.ssfusd.org/>



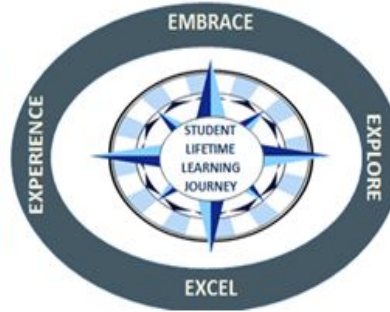
# District Goals

## LCAP GOAL 1

### Academic Achievement

The district will provide a high quality curricular program for students that will raise student proficiency on the California Common Core State Standards as measured by overall academic achievement on state assessments, CA Dashboard results, interim assessment data and ELPAC/Reclassification data.

SSFUSD Vision



## LCAP GOAL 4

### Special Education

The district will provide high quality curricular programs for students with IEPs that will raise student engagement in school and proficiency on the California Common Core State Standards as measured by overall academic achievement on state assessments, and engagement rates.

## LCAP GOAL 2

### Professional Development

Identified classified staff, certificated and administrative staff will participate in professional development to create capacity and expertise in curriculum program implementation based on the development of scope and sequence as measured by walkthrough observations and other evidence (artifacts and student work).

## LCAP GOAL 3

### Student, Parent & Community Engagement

Improve parent school engagement through an increase in participation in site and district parent groups such as SSC, PTSA, DELAC, ELAC, AAPAC as well as in other parent meetings as measured by attendance sign in sheets.

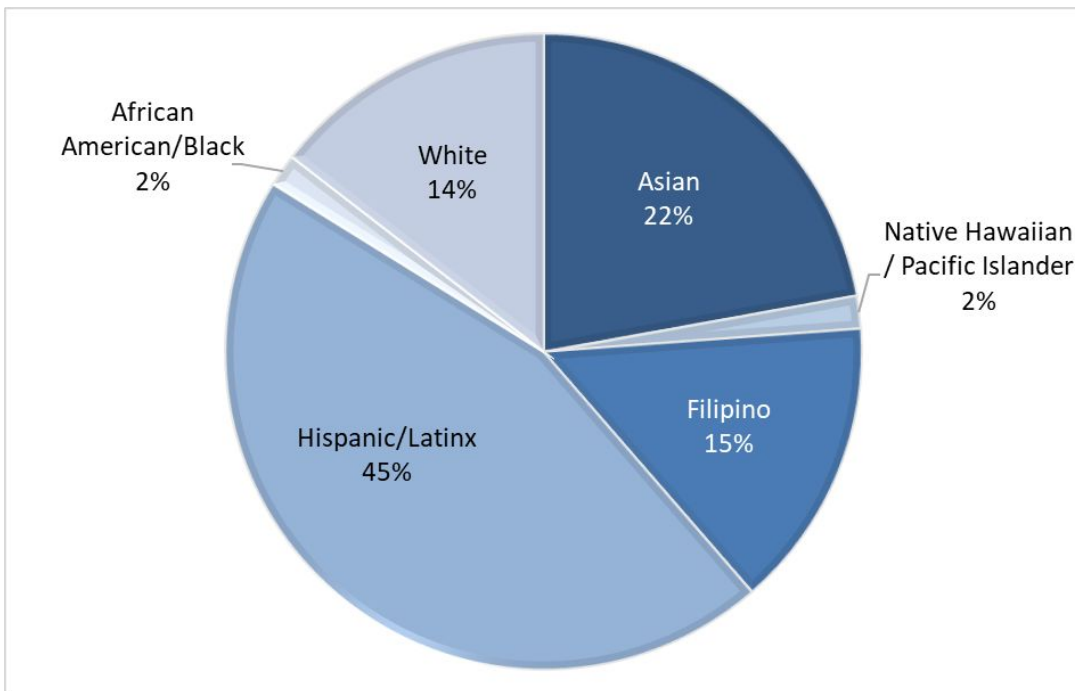
# District Priorities

A) Improve Curriculum, Instruction & Assessment

B) Bolster Professional Learning and Collaboration

C) Strengthen Leadership Capacity

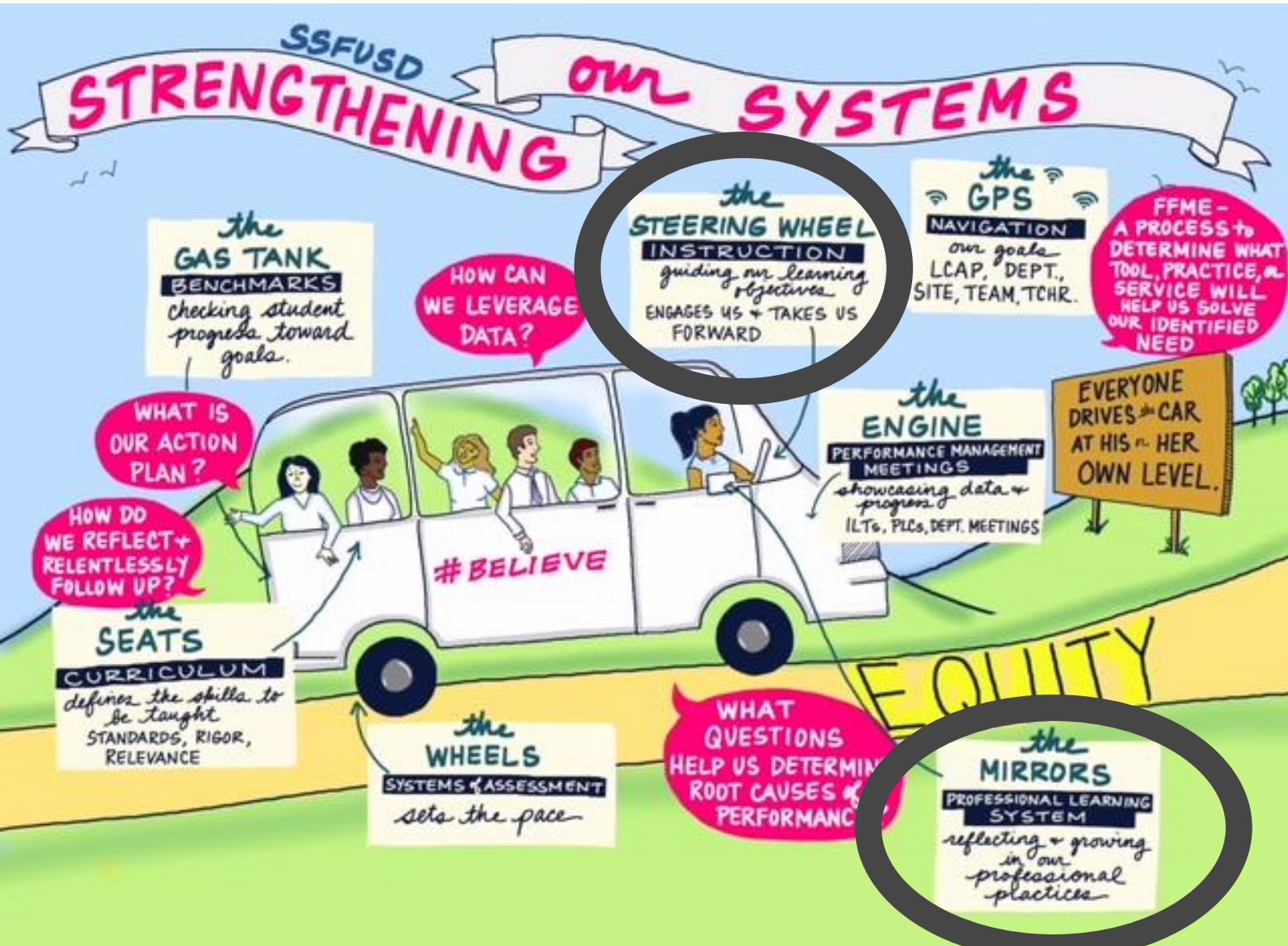
# Our Students



<b>Students by Grade Level</b>	<b>#</b>
Transitional Kindergarten	24
Kindergarten	43
1st	45
2nd	63
3rd	64
4th	67
5th	60

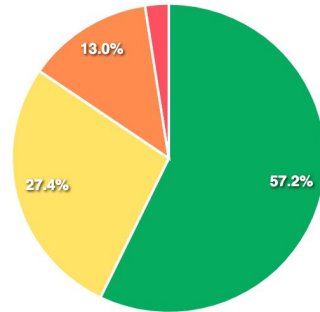
<b>Student Group</b>	<b>#</b>	<b>%</b>
Female	181	49%
Male	185	51%
English Learners*	71	19%
Students w/Disabilities	64	17%
Socioeconomically Disadvantaged	122	33%
<b>All Students</b>	<b>366</b>	

\*English Learner count does not include 16 Redesignated students and 1 pending



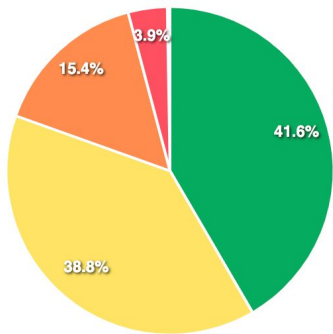
# Attendance

## 2023-2024 Attendance Trend



TIER	%	TOTAL
<span style="color: green;">●</span> Satisfactory (<5%) <sup>1</sup>	57.2%	211
<span style="color: yellow;">●</span> At Risk (5-9%) <sup>1</sup>	27.4%	101
<span style="color: orange;">●</span> Moderate Chronic (10-19%) <sup>2</sup>	13.0%	48
<span style="color: red;">●</span> Severe Chronic (20-49%) <sup>3</sup>	2.4%	9
<span style="color: darkred;">●</span> Extreme Chronic (>=50%) <sup>3</sup>	0.0%	0

## 2022-2023 Attendance



TIER	%	TOTAL
<span style="color: green;">●</span> Satisfactory (<5%) <sup>1</sup>	41.6%	151
<span style="color: yellow;">●</span> At Risk (5-9%) <sup>1</sup>	38.8%	141
<span style="color: orange;">●</span> Moderate Chronic (10-19%) <sup>2</sup>	15.4%	56
<span style="color: red;">●</span> Severe Chronic (20-49%) <sup>3</sup>	3.9%	14
<span style="color: darkred;">●</span> Extreme Chronic (>=50%) <sup>3</sup>	0.3%	1

# A Space to Learn



The Ponderosa Community encourages and cultivates social and educational *growth* for all learners.

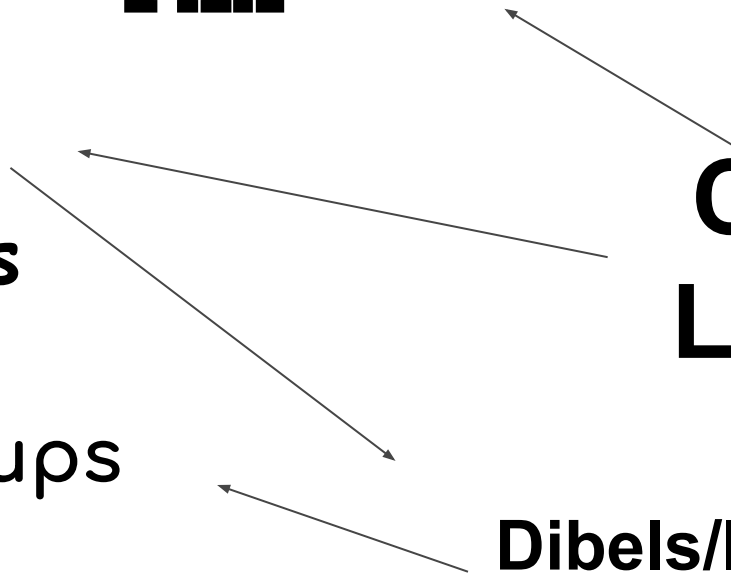
**Soul Shoppe &  
PAX**

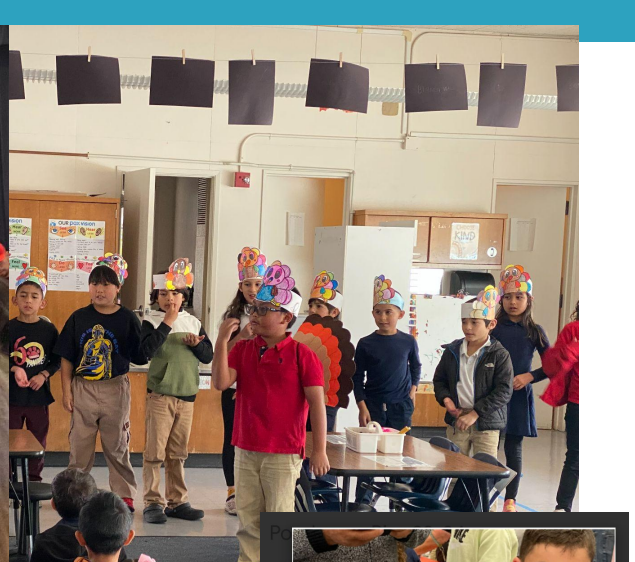
Priority  
Standards  
Math Talks

Small Groups

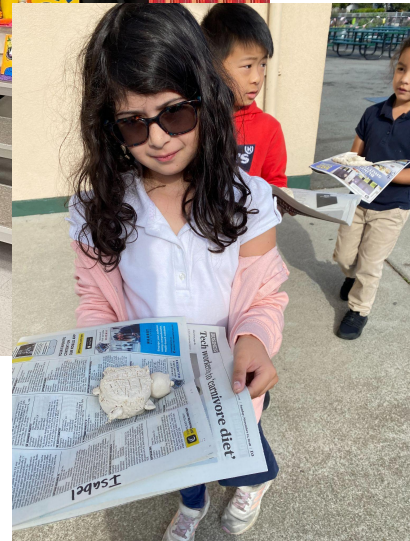
**Common  
Language**

**Dibels/IXL**











**Academic Achievement**

Professional Development

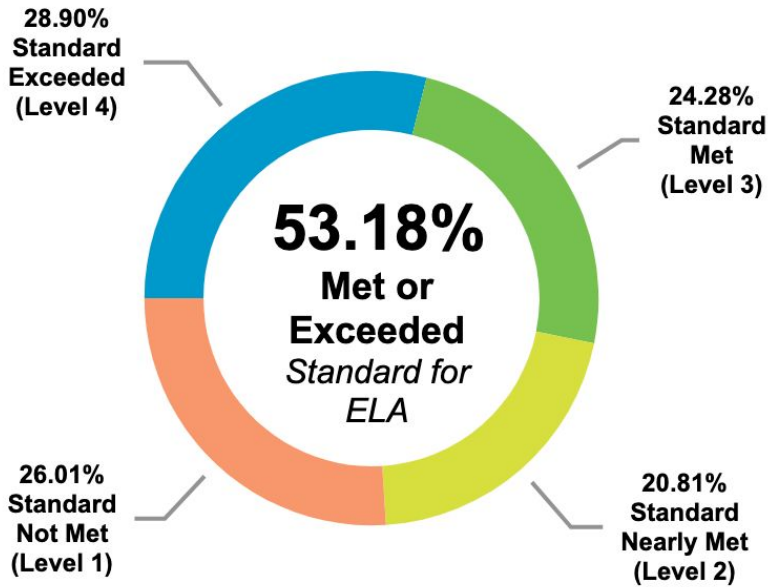
Community Engagement

Special Education

# CAASPP Scores 2022-2023

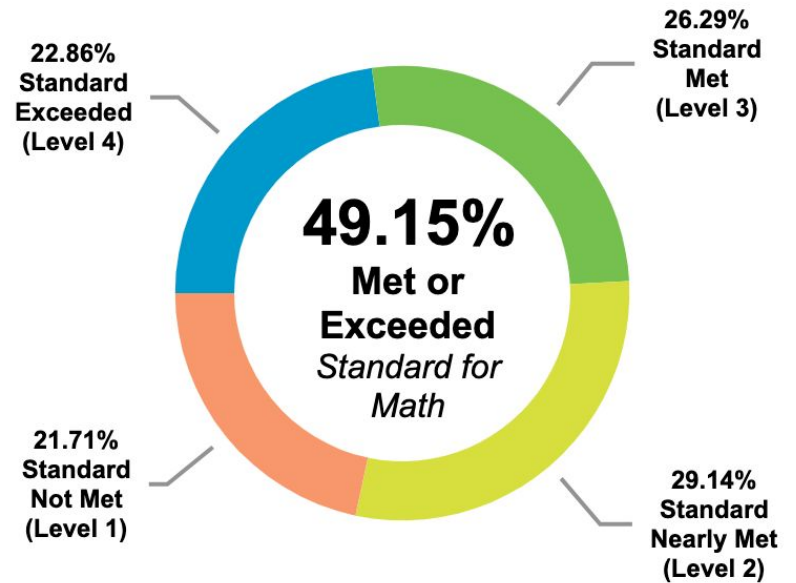
## ELA

Percent of students within each achievement level



## Mathematics

Percent of students within each achievement level

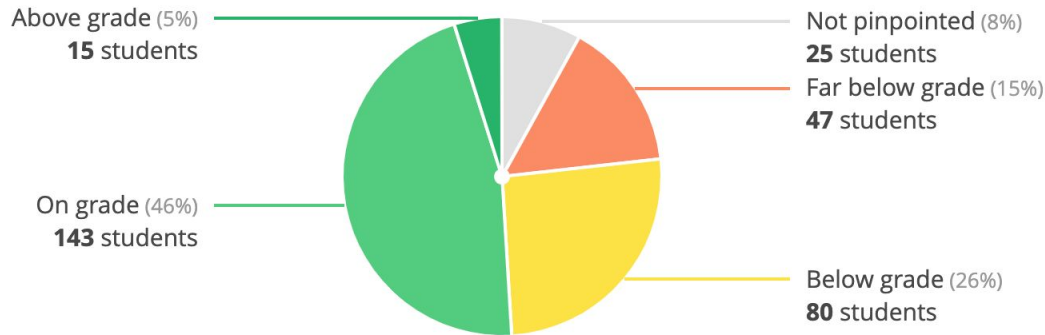


# Formative Assessment

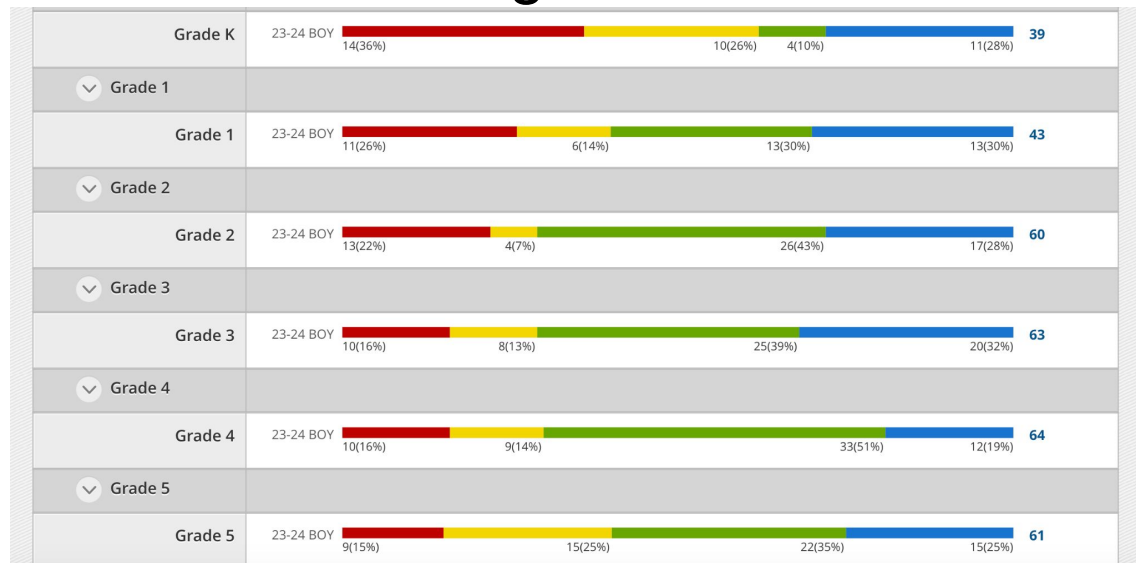
## Math - IXL

Ponderosa Snapshot 1 (Aug 14 2023 - Aug 31 2023)

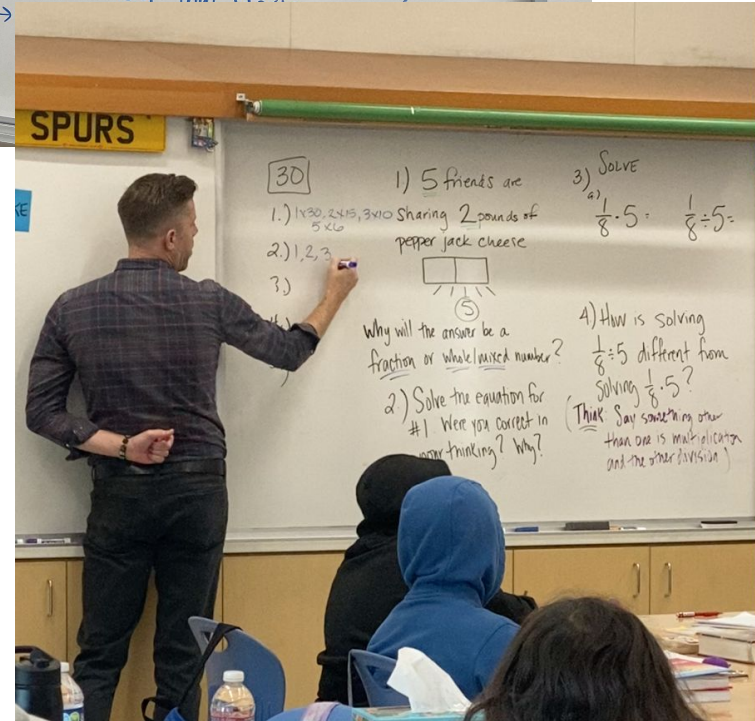
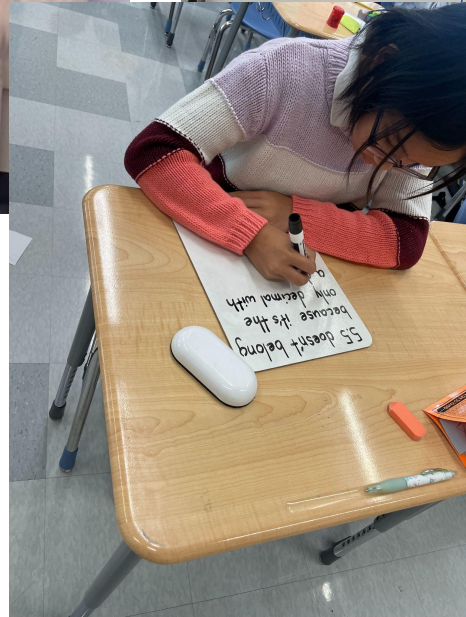
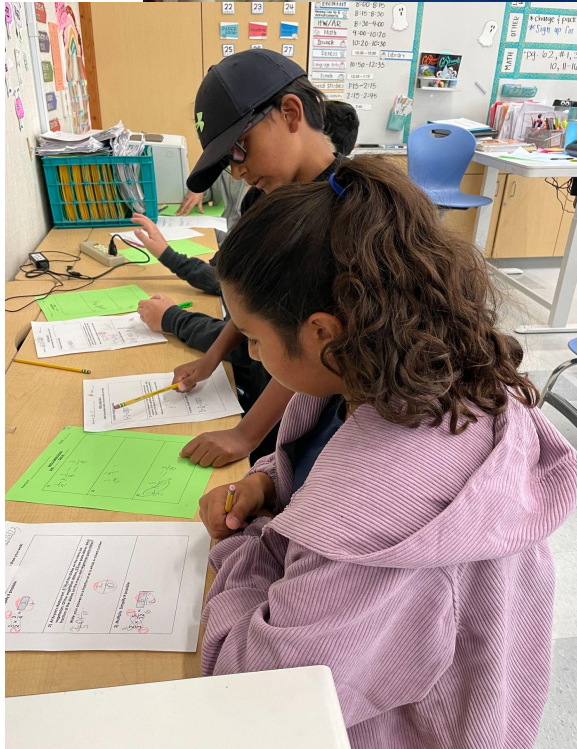
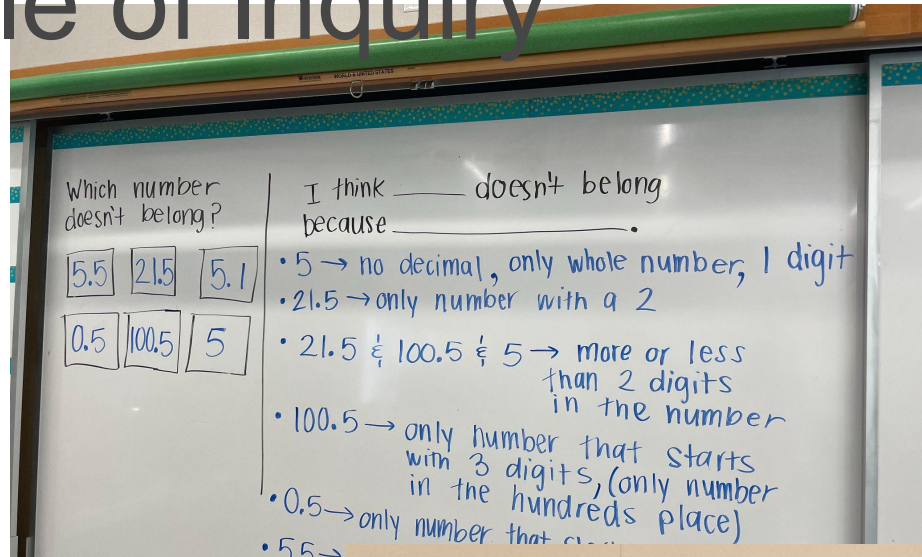
Math | Grades 1 - 5



## Reading - Dibels



# Math Talks - Cycle of Inquiry



# Soul Shoppe & PAX



# Small Group



Thank you

PTA





Ponderosa Staff - Thank you!