

# South San Francisco Unified School District Local Indicator Measurements



California School  
DASHBOARD



California Department of  
EDUCATION

Annual Report to SSFUSD Board of Trustees  
October 10, 2019

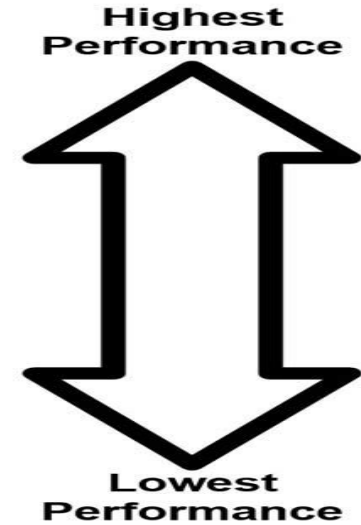
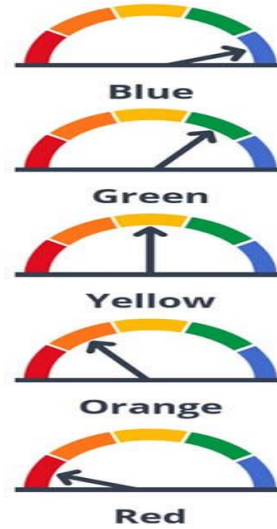
# AGENDA

- 1) Review of California School Dashboard icons
- 2) Review of data collection process for SSFUSD Local Indicators
- 3) Review of Local Indicator Data
- 4) Approval of Local Indicator Measures

# Indicators to Measure Performance

State  
Performance  
Indicators

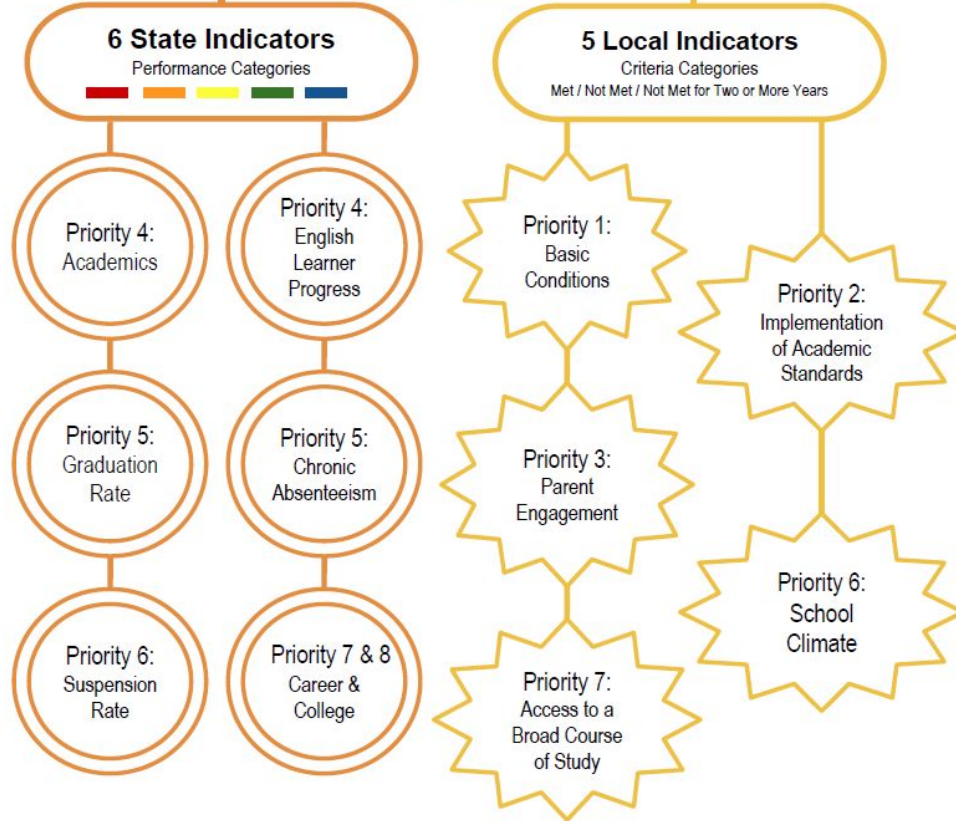
Local  
Performance  
Indicators



- Objectives Met
- Objectives Not Met
- Objective Not Met for 2 or more years

# LCFF Evaluation Rubrics

11 Indicators to Measure Performance



# Priority 1: Basic Conditions

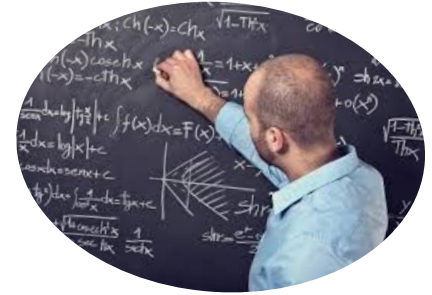
## Objective Met

Tool Used: EPIC (SSFUSD Human Resources Database)

Objective: To sustain a less than 5% misalignment of teacher vacancies, incorrect/no credentials, non-highly qualified

Analysis:

- 100% of teachers with credentials
- 0.9% of misalignments and vacant teacher positions (4-all SPED positions) in 2018-19. 0.002% in 2017-18.
- 100% of teachers are considered Highly Qualified



### Actions:

- Retainment
- Recruitment
- Training

## Priority 2: Implementation of Priority Standards

Objective Met

**Tool Used:** Hulce Consulting - Needs Assessment & Performance Management

**Objective:** To identify, monitor and assess the level of implementation of CCSS throughout the district in order to promote and improve proficiency levels of all students.

**Analysis:**

- **Moving towards target (Finding 3 - Needs assessment)**
- **Increased participation in Teacher Leadership Teams**
- **Scope and Sequence website**

In Progress:

- Scope and Sequence
- Priority Standards
- Common Formative Assessments

# Priority 3: Parent Engagement

Objective Met

Tools Used: Panorama Survey/CA Healthy Kids Survey from 2017)

Objective: Increase Family engagement at our schools

	<u>2017-18</u>	<u>2018-19</u>
The degree to which families become involved with and with and interact with their child's school.	279 respondents 28% favorably	516 respondents 25% favorably
How involved have you been with a parent group(s) at your child's school?	279 respondents 22% favorably	516 respondents 15% favorably
In the past year, how often have you visited your child's school? (monthly, weekly or more)	279 respondents 59% favorably	516 respondents 55% favorably
How often do you meet in person with teachers at your child's school? (monthly, weekly or more)	279 respondents 15% favorably	516 respondents 16% favorably

Actions:

- Parent Committee
- Parent events
- Surveys
- Analysis of Survey Data

Healthy Kids Survey (246 respondents)

- Parents are welcome to participate at this school. (67% Strongly Agree/Agree)

## Priority 6: School Climate

Objective Met

**Tool Used:** California Healthy kids Survey (2017-18) Same as last year

**Objective:** 80% of students or higher feel connected and supported by staff/peers.

**Analysis:** Data Sample

Actions:

- PBIS (PAX training)
- YSB Bureau (LCAP)

### Elementary Students (Grade 5)

- 98% believe their teachers care about them
- 80% like to come to school
- 97% feel they can talk to other adults
- 96% say other students are kind to them

### Secondary Students

- 91% say school is a positive environment
- 86% feel their teachers care about them
- *62% stated they have an adult at school they can talk to*
- 92% stated they have a friend/peer they can talk to
- 90% feel the school is a safe and caring community



## Priority 7: Access to Broad Course of Study ( NEW )

**Tool Used:** SSFUSD Registrar records

**Objective:** Measured progress to the extent that students have access to, and are enrolled in, a Broad Course of Study.

In grades 9-12, we define a Broad Course of Study as:

- ★ A Course Catalog that provides students with several opportunities to meet the A to G requirements. 98% of students are enrolled in at least one class that meets the A-G requirements.
- ★ Coursework that includes optional two year CTE pathways such as Biotech, Automotive, Culinary, Video Art, and Photography. 1.7% of high school students completed a two year pathway in 2018/2019.
- ★ 1.5% of high school students completed a two year pathway in 2017/2018.
- ★ Courses that meet the UC/CSU entrance requirements.

# Next Steps

- Publish findings to California School Dashboard by 11/01/19 <http://www.caschooldashboard.org>
- Provide summary narrative of findings
- Prioritize gap areas
- Focus objectives on **GROWTH** in subsequent years

QUESTION

