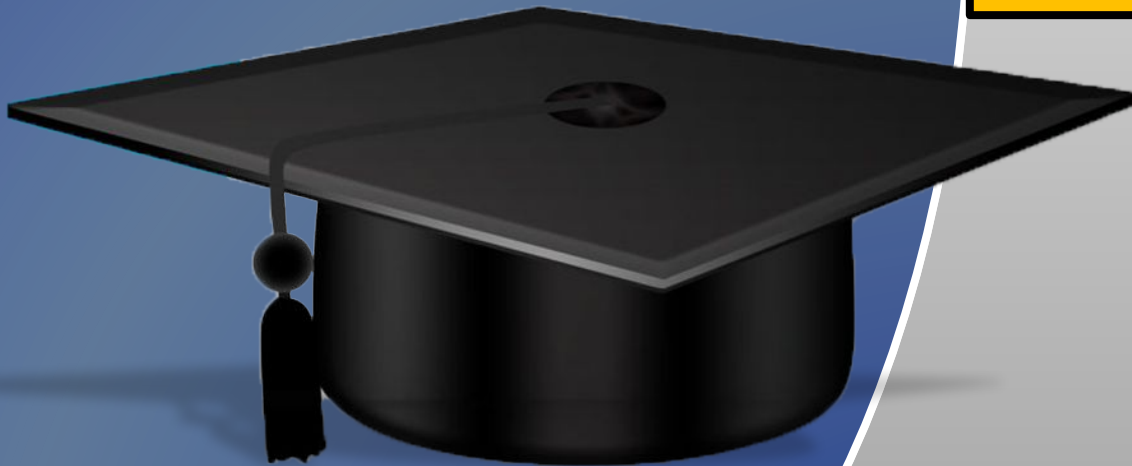
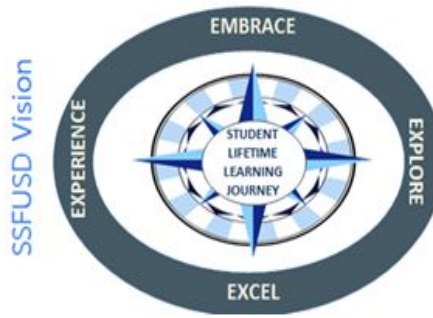




Monte Verde
Elementary
2021-2022





LCAP GOAL 1

Academic Achievement

The district will provide a high quality curricular program for students that will raise student proficiency on the California Common Core State Standards as measured by overall academic achievement on state assessments, CA Dashboard results, interim assessment data and ELPAC/Reclassification data.

LCAP GOAL 2

Professional Development

Identified classified staff, certificated and administrative staff will participate in professional development to create capacity and expertise in curriculum program implementation based on the development of scope and sequence as measured by walkthrough observations and other evidence (artifacts and student work).

LCAP GOAL 3

Student, Parent & Community Engagement

Improve parent school engagement through an increase in participation in site and district parent groups such as SSC, PTSA, DELAC, ELAC, AAPAC as well as in other parent meetings as measured by attendance sign in sheets.

District priorities

Improve Curriculum,
Instruction &
Assessment

Bolster Professional
Learning and
Collaboration

Strengthen
Leadership Capacity

SSFUSD

STRENGTHENING OUR SYSTEMS

the
GAS TANK
BENCHMARKS
checking student progress toward goals.

HOW CAN WE LEVERAGE DATA?

the
STEERING WHEEL
INSTRUCTION
guiding our learning objectives
ENGAGES US + TAKES US FORWARD

the
GPS
NAVIGATION
our goals
LCAP, DEPT., SITE, TEAM, TCHR.

FFME -
A PROCESS TO DETERMINE WHAT TOOL, PRACTICE, OR SERVICE WILL HELP US SOLVE OUR IDENTIFIED NEED

WHAT IS OUR ACTION PLAN?

HOW DO WE REFLECT + RELENTLESSLY FOLLOW UP?

the
SEATS
CURRICULUM
defines the skills to be taught
STANDARDS, RIGOR, RELEVANCE



the
ENGINE
PERFORMANCE MANAGEMENT MEETINGS
showcasing data + progress of
ILTs, PLCs, DEPT. MEETINGS

Experience
Explore
Embrace
Excel

the
WHEELS
SYSTEMS OF ASSESSMENT
sets the pace

WHAT QUESTIONS HELP US DETERMINE ROOT CAUSES OF PERFORMANCE?

EQUITY

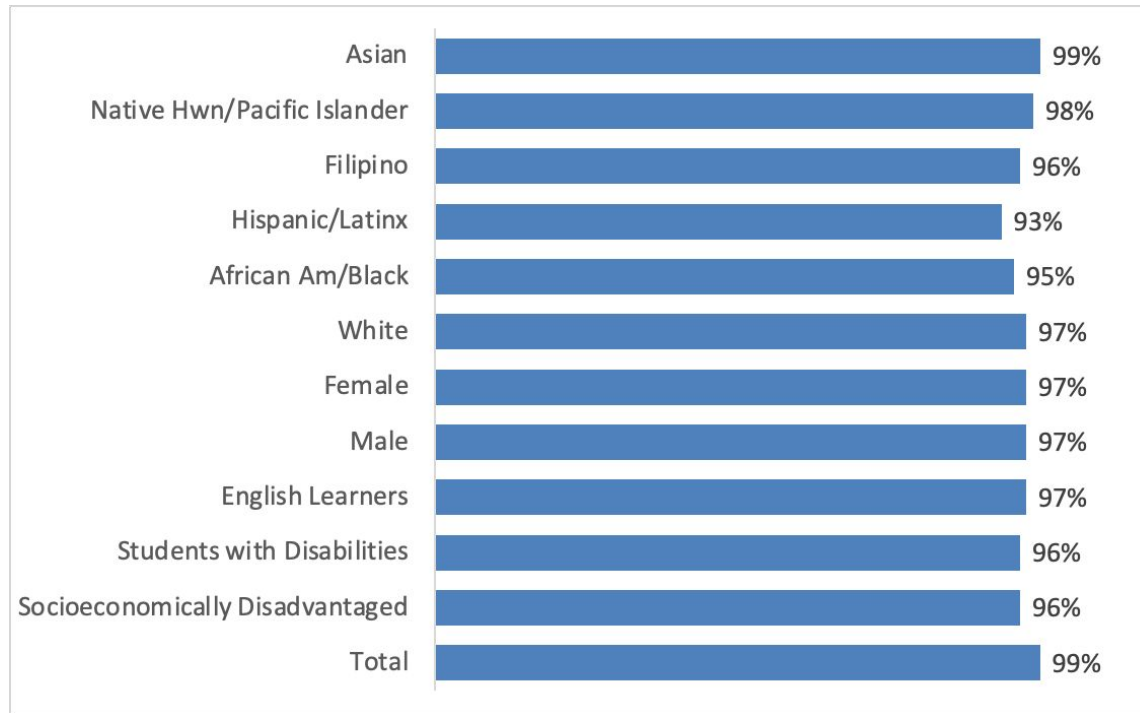
the
MIRRORS
PROFESSIONAL LEARNING SYSTEM
reflecting + growing in our professional practices



Attendance Data

Monte Verde Elementary - attendance snapshot

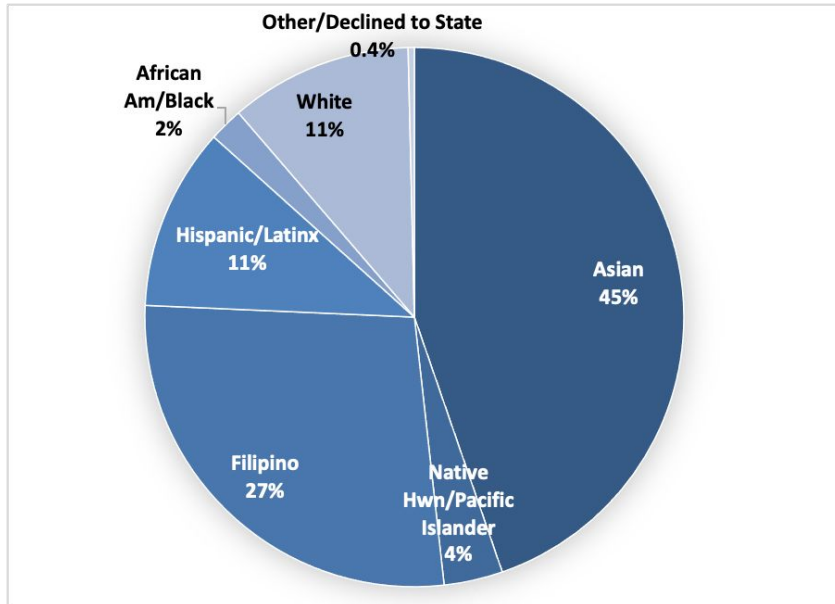
Average attendance by cohort group:



** To protect student privacy, data for student groups with fewer than 10 students is not displayed. For MVES, this includes the Decline to State (n=2) group.*

Monte Verde Elementary - student population

Students by Race/Ethnicity



Students by Grade Level

K	1st	2nd	3rd	4th	5th
78	97	90	88	99	87

Students by Program Group

Student Group	#	%
Female	270	50%
Male	269	50%
English Learners	65	12%
Students with Disabilities	33	6%
Socioeconomically Disadvantaged	84	16%
Total	539	

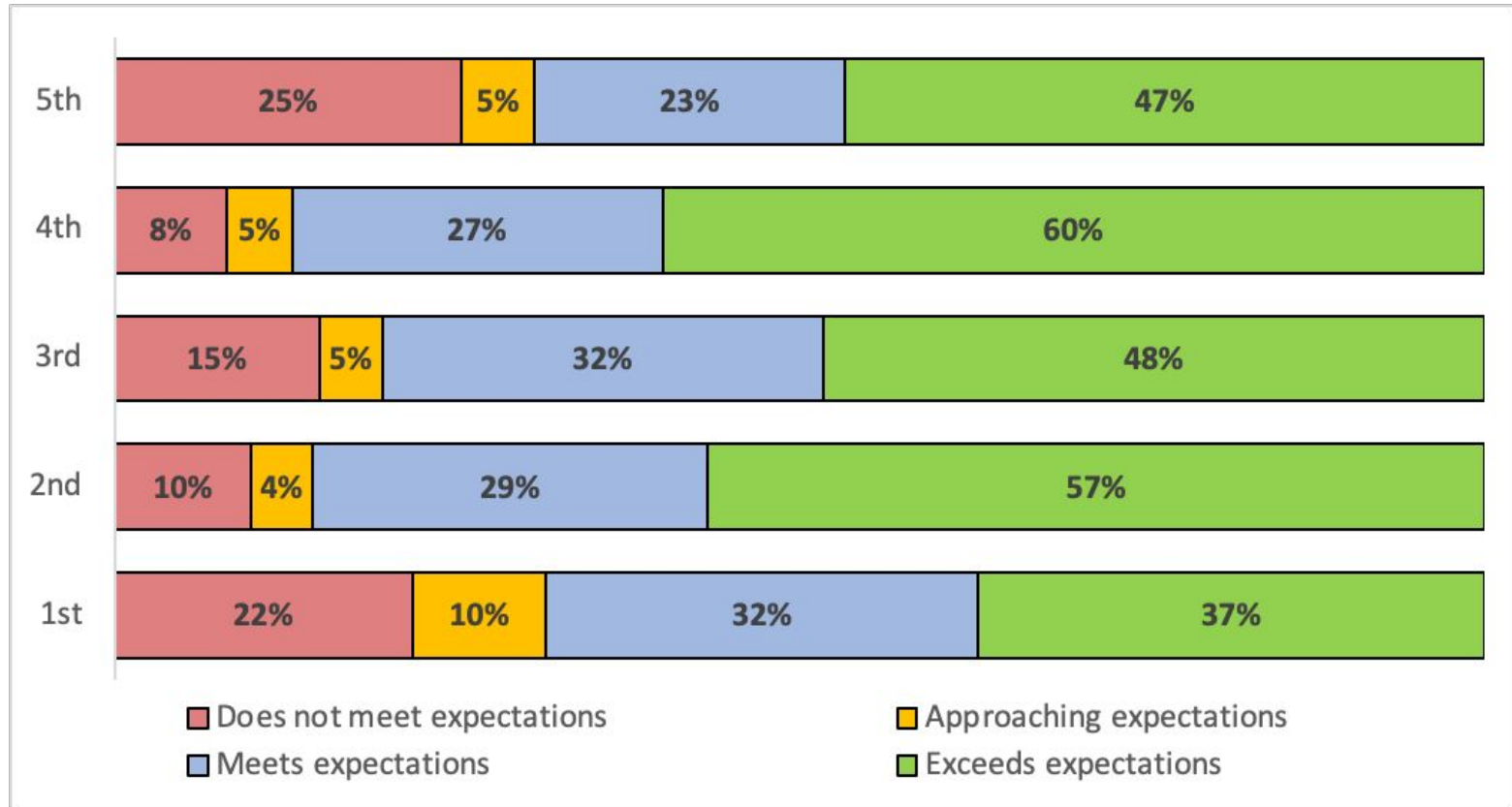
As of 12/17, 2 students in Virtual Independent Study



Literably Data

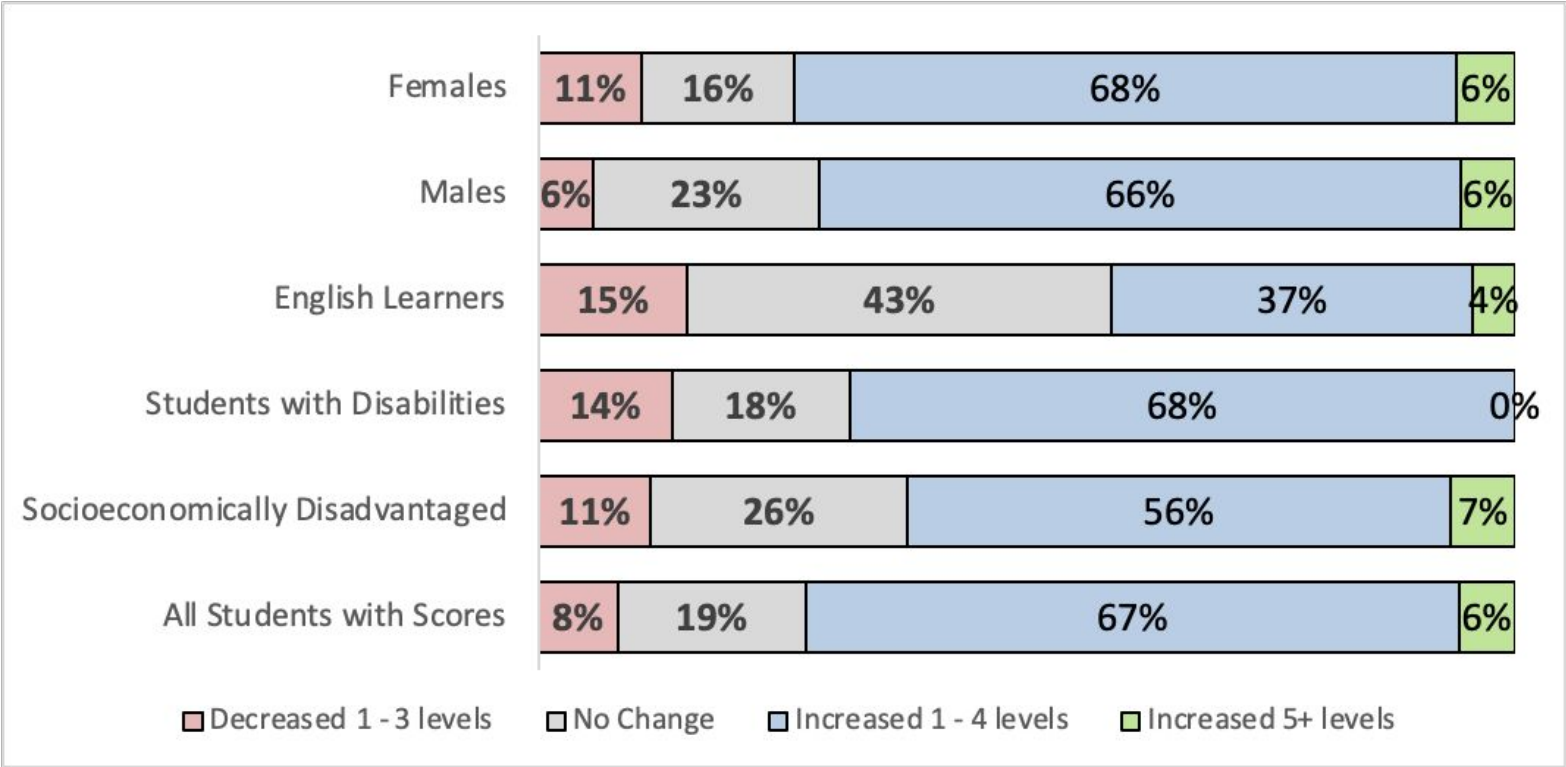
MVES Literably Scores - Fall 2021

Students meeting grade level expectations as measured by Fall Literably Assessment, Instructional Reading Level



MVES Literably Scores - Spring to Fall Comparison

By student group, comparison of student A-Z levels from Spring 2021 to Fall 2021 Literably Assessment





What's Going
On?



Morning Greeting





Pool Testing





Walk-a-thon









Distanced Volunteers





Celebration





LEAP





The A+ Team



