

Nutrition Services

Community Forum
October 21, 2021

Fran Debost



This Institution is an Equal Opportunity Provider

Agenda



- Nutrition Services Overview
- Achievements
- Challenges
- Recommendations
- Questions



NUTRITION SERVICES OVERVIEW

NS Overview



- Leadership
 - Director TBH
 - Supervisor Teri Inocencio
- Staff
 - 40 NS employees (2hrs to 8hrs)
 - 3 drivers
- Number of lunches per day 4,000
- Budget: \$3.3 M

Programs



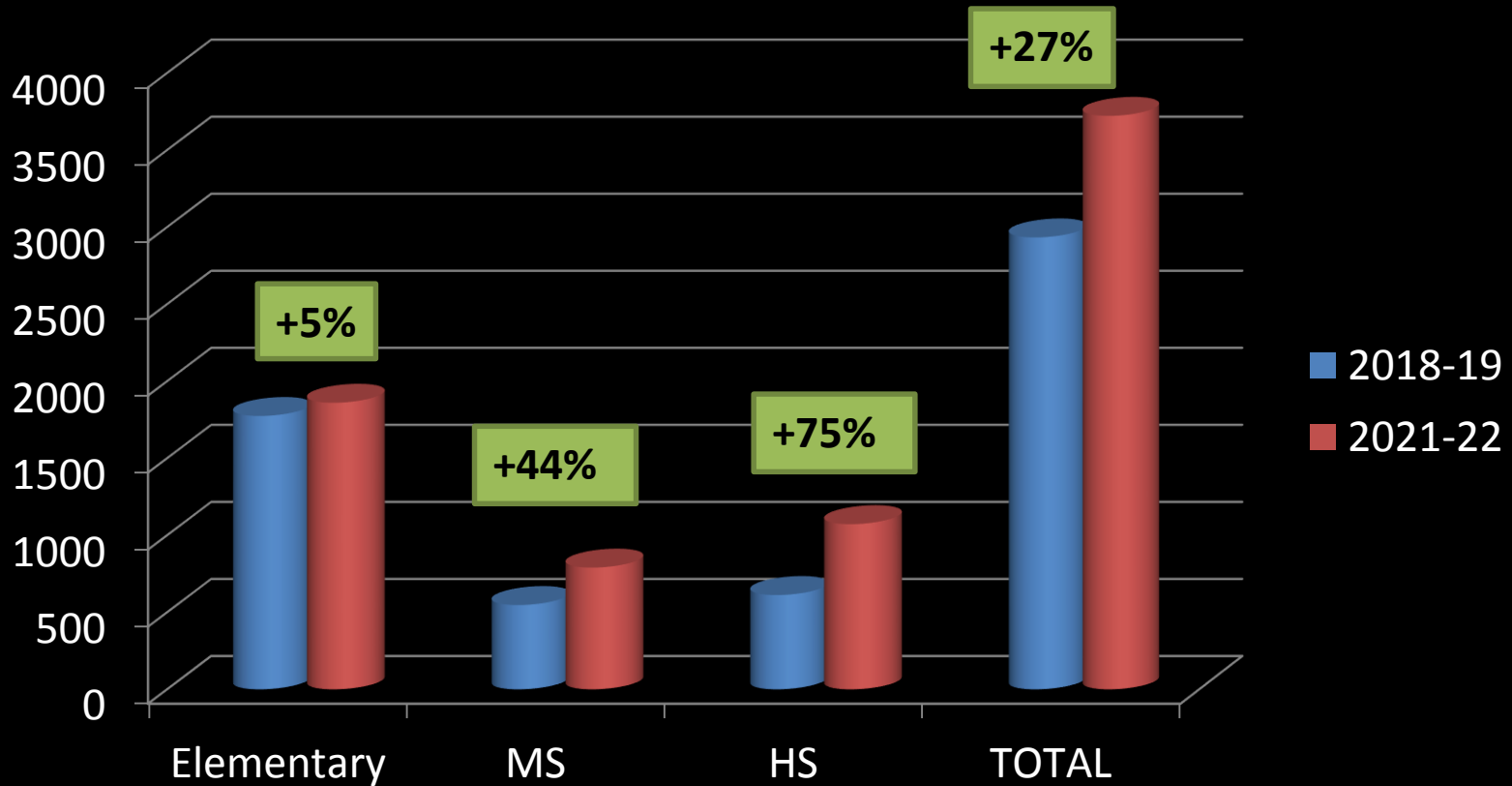
- School Breakfast Program : 8 schools
 - Breakfast in the classroom, Breakfast before the bell and 2nd chance breakfast
- National School Lunch program: 15 schools, ATP,CDS
- Child and Adult Food Program (CACFP): 7 sites
 - Breakfast, lunch and snacks
- Saturday School
- Summer Feeding (breakfast and lunch)
- 3 Private schools (lunch)
- District catering



ACHIEVEMENTS

Student participation

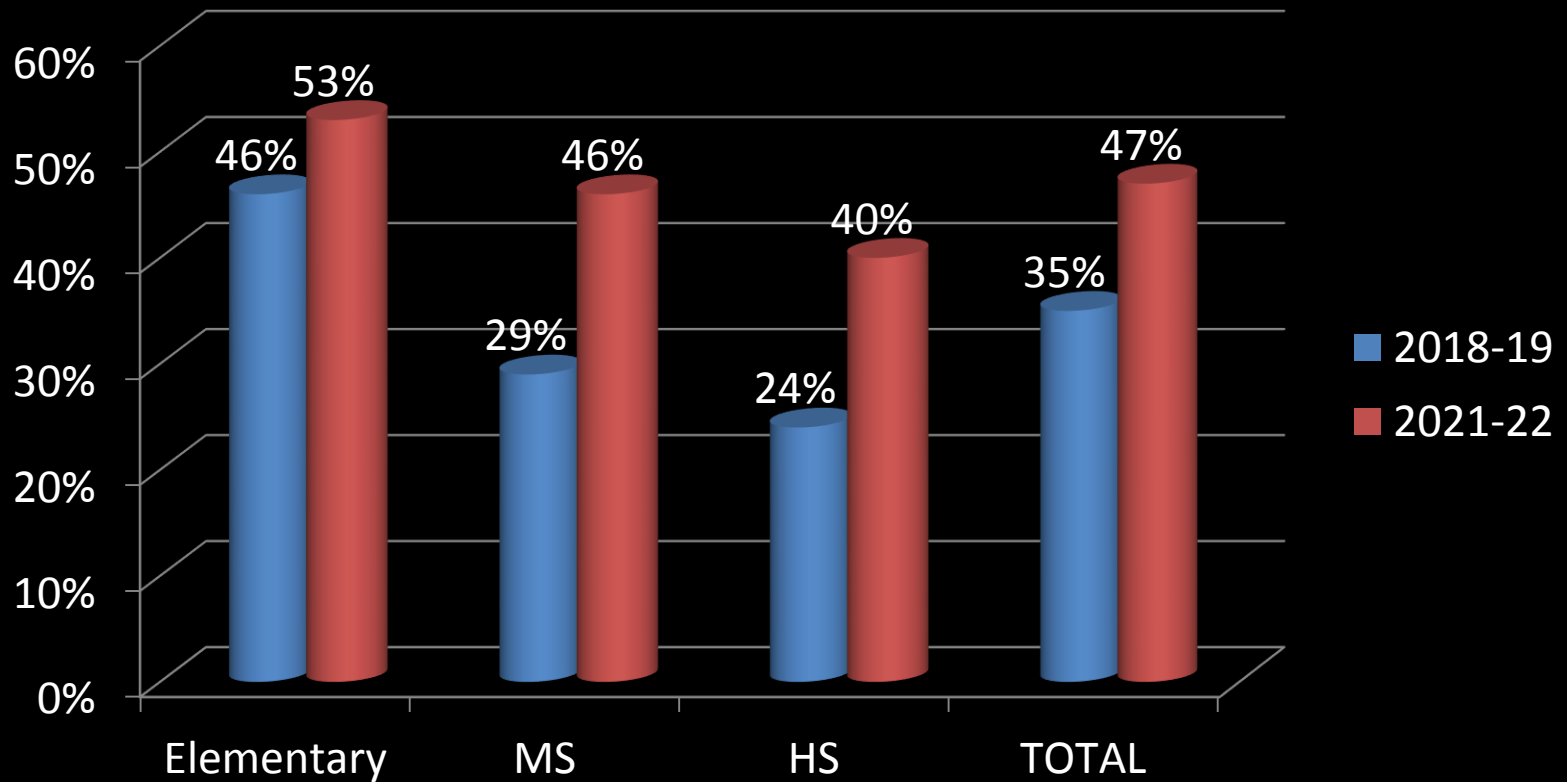
Daily Number of Lunches Served



Student participation



% Lunch student participation



Menus



- **Maintained diversity**
 - 4 week rotation
 - Daily choices
 - Multiple daily choices
 - Vegetarian options
- **Scratch cooking**
 - Remains Nutrition Services goal
 - Challenging due to lack of staff

Scratch Cooking



Turkey Taco Salad



Cobb Salad

Scratch cooking



Partnership with ATP



Prepping



Serving



Cleaning

Funding



- **Higher meal reimbursement rate**
- **USDA equipment grants: \$75,000**
 - Tilt skillets
 - Ovens
- **Second Harvest Food Bank**
 - Additional equipment to sustain California Universal Meals starting in SY 2022-23
 - Small equipment for scratch cooking (choppers, blenders etc...)



CHALLENGES

Staffing



- **30% understaffed**
 - 9 open positions
 - 4 site managers (part-time)
 - 4 site NS assistant (part-time)
 - 1 Rover (full-time)
 - 3 extended medical leave and 1 on light duty (Central kitchen)
 - Director position open
- **Multiple causes**
 - Nationwide labor shortage
 - Salary & part-time positions
 - Food safety certifications & Merit System

Supply Chain Issues



- **Food and Food Supplies availability**
 - All deliveries shorted
 - Lead time increasing everyday
 - Some items not available (chicken, production paper trays)
 - Food Industry does not expect real improvement before next school year
- **Skyrocketing cost of goods**
 - Vendors invoke force major clause in contracts and increase prices

Infrastructure & Equipment



- **Old and outdated cafeteria areas and kitchens**
 - cannot accommodate the number of students → long lines
- **Site cafeteria**
 - Lack of cooking equipment
 - Lack of cold storage
- **Central Kitchen**
 - Insufficient freezer space

High School Lunch Lines



- **Time in line**
 - ECHS: 500 students in 15 min
 - SSFHS: 650 students in 20 minutes
 - This means **33 students per minute**
- **More staff is not the magic bullet**
 - Issue is the line structure
 - Speed-line vs. Food Court

Food Allergies



- Food allergies more and more frequent
- Some food allergies difficult to accommodate such as eggs
- No Point of Sale: allergic students cannot be identified

California Universal Meals 2022-23



- **What is it?**
 - Additional funding from the State
 - USDA rules still apply
 - Mandatory
- **Many concerns**
 - Point Of Sales required to claim meals by eligibility → longer lines
 - Breakfast at all schools
 - CEP/Provisions Mandatory?
 - Phasing?



RECOMMENDATIONS

Staffing

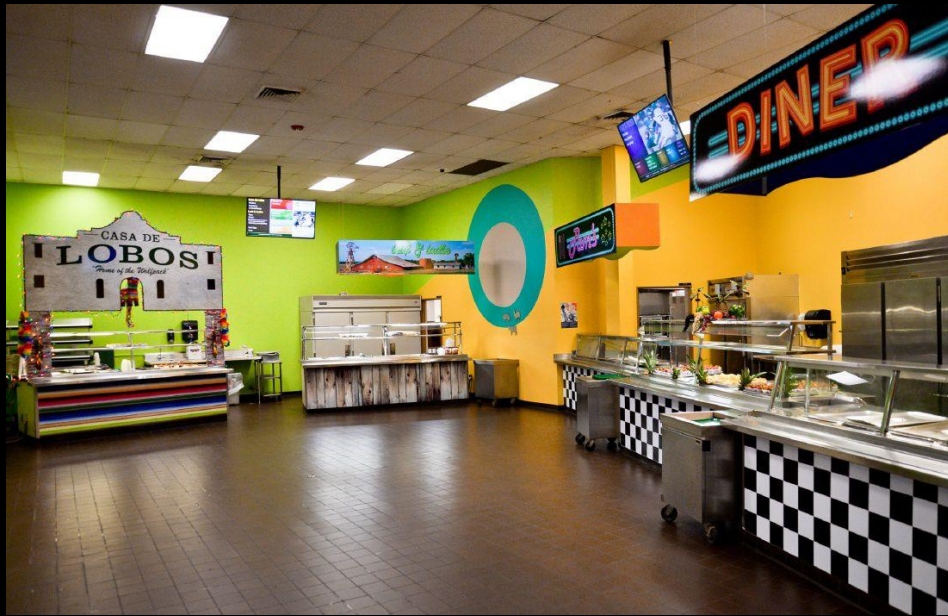


- Increase salaries
- Loosen hiring rules
- Combine site cafeterias/central kitchen positions
 - Already existing
 - Extension requires to organize central kitchen staff in 2 shifts
- Continue to develop the ATP program

High School Serving Lines



- Mid/Long-term: Modernize/remodel kitchens
Food court style



- Short-term: 2 lunch periods

Infrastructure



- Plan and order equipment needed in 2022-23 as soon as possible!
- Look for grants (USDA, County, non-profit organizations)
- Stay informed about State funding for Universal Meals and \$1.5 billion USDA will give to School Food Service
- Remodel the Central Kitchen freezer
 - Short-term: rent a cold box (cargo container)

