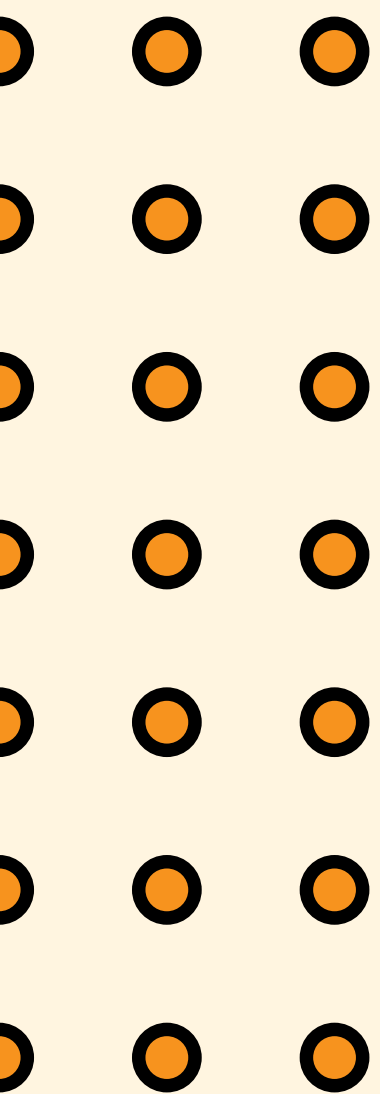
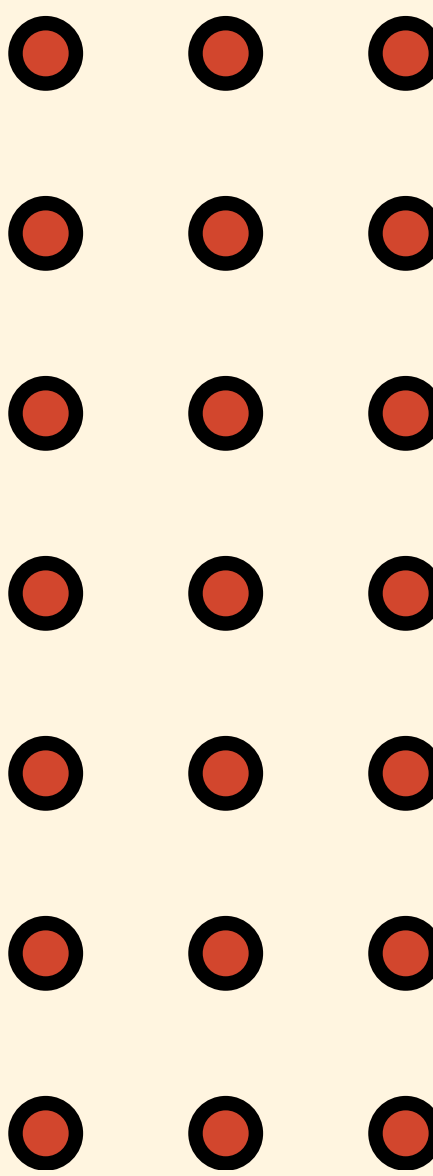


AMESBURY HIGH SCHOOL

NEW STUDENT GUIDE

LEARN
GROW
EXPLORE
EXCEL



AMESBURY HIGH SCHOOL

IMPORTANT INFO

ADMINISTRATION

DANIELLE RICCI
PRINCIPAL

GLEN GEARIN
ASSISTANT PRINCIPAL/ATHLETIC DIRECTOR

ALINA LINGLEY
ASSISTANT PRINCIPAL

PLACES TO FIND US

WEBSITE:

UPCOMING EVENTS ARE IN THE WEEKLY BULLETIN HERE
[HTTPS://SCHOOLS.AMESBURYMA.GOV/DOMAIN/861](https://schools.amesburyma.gov/domain/861)

SOCIAL MEDIA

FACEBOOK & INSTAGRAM
@AMESBURYHIGHSCHOOL

EMAIL

YOU CAN EMAIL ANY STAFF MEMBER USING:
FIRSTNAME.LASTNAME@AMESBURYMA.ORG
EX. DANIELLE.RICCI@AMESBURYMA.ORG

ADMINISTRATIVE ASSISTANTS

MICHELLE MARTENS
ADMINISTRATIVE ASSISTANT TO THE PRINCIPAL

ANNE NADEAU
MAIN OFFICE

LISA WILE
ATHLETICS

GWEN FOLEY
GUIDANCE

M.E. WELLS
RECEPTIONIST

DEPARTMENT HEADS

STEVEN BASTIEN
ENGLISH

GREGG BROWN
SPECIAL EDUCATION

ABBY MURPHY
WORLD LANGUAGE

MARK CASTO
SCIENCE, TECH, ENGINEERING

JACK MCSHANE
VISUAL MEDIA/PERFORMING ARTS

JESS REGIS
MATH

SUE SAURMAN
GUIDANCE

AMANDA THIBODEAU
WELLNESS

KRISTEN WALSH
SOCIAL STUDIES

AMESBURY HIGH SCHOOL

CORE ACADEMICS

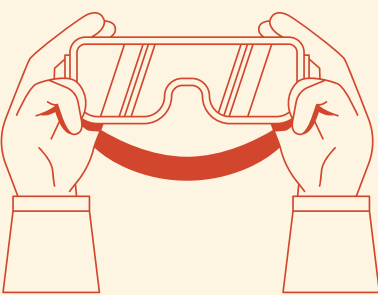


ENGLISH

Grade 9 English - 4
Grade 10 English - 4
Grade 11 English - 4
Grade 12 English - 4
Total Credits: 16

MATH

Grade 9 Math - 4 (Algebra I or Geometry)
Grade 10 Math - 4 (Geometry or Algebra II)
Grade 11 Math - 4 (Algebra II or Higher Math)
Grade 12 Math - 4
Total Credits: 16

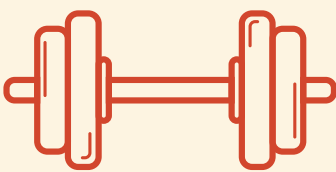


SCIENCE, TECH & ENGINEERING

Biology - 4
Additional Lab Sciences - 8
*See Program of Studies for lab science offerings
Technology/Engineering - 2
Total Credits: 14

SOCIAL STUDIES

World History - 4
American Government/US History I - 4
US History II - 4
Social Studies Elective - 1
Personal Finance - 1
Total Credits: 14



WELLNESS

Fundamentals of Physical Fitness - 1
Additional Physical Education - 1
Health - 1
Nutrition - 1
Total Credits: 4

WORLD LANGUAGE

Level 1 Language - 2
Level 2 Language - 2
Total Credits: 4



VISUAL MEDIA/PERFORMING ARTS

Choice of electives
Total Credits: 2

CREDITS REQUIRED TO GRADUATE: 84
COURSE CREDITS REQUIRED TO GRADUATE: 70
TOTAL AVAILABLE CREDITS: 96

COMMUNITY SERVICE:

60 TOTAL HOURS
(15 PER YEAR RECOMMENDED)

AMESBURY HIGH SCHOOL

ELECTIVES

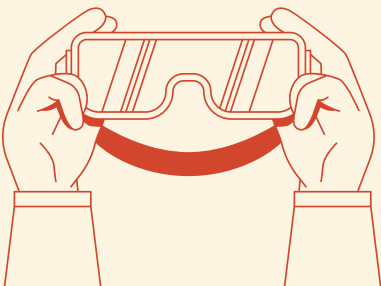


- TIME FOR READING
- TEDX AMESBURY
- CREATIVE WRITING
- WRITING POETRY
- POWER OF PERSUASION
- RESEARCH METHODS
- TRUE CRIME
- LEADERSHIP IN SPORTS
- SPORTS LITERATURE
- HEROES AND DEMONS
- IS THERE REALLY "JUSTICE FOR ALL"?

ENGLISH

WORLD LANGUAGE

- HISPANIC CULTURE THROUGH FILM
- FRENCH CULTURE THROUGH FILM

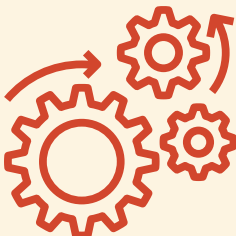


- ANATOMY & PHYSIOLOGY
- PHYSICS
- METEOROLOGY
- MARINE BIOLOGY
- ASTRONOMY
- FORENSICS
- INTRO TO HEALTH CARE
- ALLIED HEALTH
- GEOLOGY
- ENVIRONMENTAL SCIENCE

SCIENCE

TECHNOLOGY/ENGINEERING

- MANUFACTURING TECH I & II
- CONSTRUCTION TECH I & II
- CAD I & II
- INTRO TO ROBOTICS
- FUNDAMENTALS OF ENGINEERING
- APPLIED ENGINEERING
- COMPUTER SOFTWARE & APPS
- 3D COMPUTER MODELING I & II
- COMPUTER PROGRAMMING I - III
- VIDEO PRODUCTION I & II

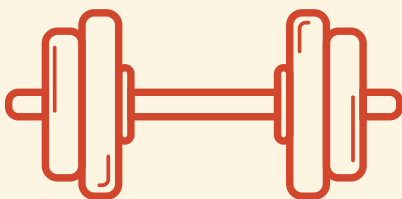


- GLOBAL GEOGRAPHY
- CURRENT WORLD EVENTS
- HISTORY THROUGH HOLLYWOOD
- CURRENT AMERICAN POLITICS
- LOCAL CONNECTIONS
- PSYCHOLOGY
- ART HISTORY
- LAW
- HOLOCAUST STUDIES
- LOCAL HISTORY
- MICROECONOMICS

SOCIAL STUDIES

WELLNESS

- CLOTHING AND TEXTILES I & II
- FOODS I & II
- CHILD DEVELOPMENT
- INTRO TO SPORTS MEDICINE
- ATHLETIC TRAINING
- LIFELONG SPORTS
- TEAM SPORTS
- YOGA 101
- YOGA PHILOSOPHY
- HYBRID YOGA
- WEIGHT TRAINING I & II
- POWER, SPEED, AGILITY, AND ENDURANCE
- PARTNERS IN PHYSICAL EDUCATION



VISUAL MEDIA/FINE ARTS

- INTRO TO VISUAL MEDIA
- DIGITAL PHOTOGRAPHY I & II
- DESIGN FOR BUSINESS & THE WEB I & II
- EVENTS PHOTO AND LAYOUT EDITING
- ART AND DESIGN
- PAINTING / DRAWING / PRINTMAKING / CERAMICS
- FILM PHOTOGRAPHY

PERFORMING ARTS/MUSIC

- BAND
- CHORUS
- PIANO LAB I & II
- GUITAR LAB I & II
- MUSIC IN FILM
- THEATER I
- MUSIC THEORY & COMPOSITION



NOTE: COURSES RUN BASED ON REGISTRATION. SOME RUN IN ALTERNATING YEARS. STUDENTS WILL BE ABLE TO REFER TO THE MOST CURRENT PROGRAM OF STUDIES TO SEE WHICH COURSES ARE AVAILABLE EACH SCHOOL YEAR. UPPER LEVEL ELECTIVES ARE OFFERED AT THE HONORS LEVEL.

AMESBURY HIGH SCHOOL

ADVANCED OFFERINGS

ADVANCED PLACEMENT COURSES

AP COURSES ARE THE HIGHEST ACADEMIC LEVEL OFFERED AT AHS. STUDENTS WHO TAKE THE AP EXAM CAN EARN A QUALIFYING SCORE THAT MAY HELP THEM TO RECEIVE COLLEGE CREDIT. WE OFFER THE FOLLOWING AP COURSES:

- ENGLISH LITERATURE & COMPOSITION
- CALCULUS AB / CALCULUS BC
- STATISTICS
- CHEMISTRY
- PHYSICS
- BIOLOGY
- ART AND DESIGN
- US HISTORY
- PSYCHOLOGY
- FRENCH LANGUAGE & CULTURE
- SPANISH LANGUAGE & CULTURE



COLLEGE PARTNERSHIPS

WE ARE PROUD TO OFFER PARTNERSHIPS WITH TWO LOCAL COLLEGES. THIS RESULTS IN SIGNIFICANTLY REDUCED RATES FOR COURSES. STUDENTS HAVE OPPORTUNITIES BOTH AT AHS AND OFF CAMPUS. OUR PARTNERS INCLUDE:

- NORTHERN ESSEX COMMUNITY COLLEGE
- SOUTHERN NEW HAMPSHIRE UNIVERSITY



SENIOR PASS PROGRAM

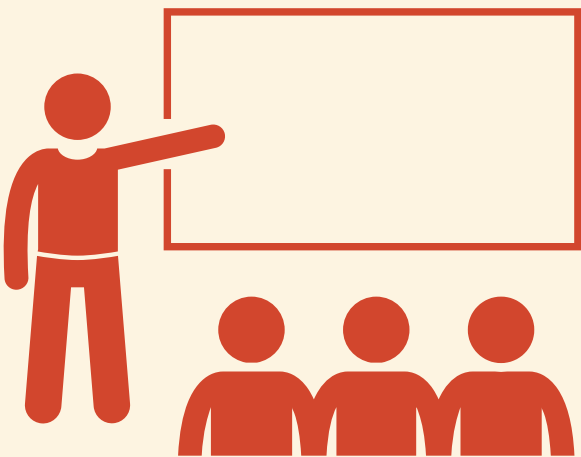
OUR SENIOR PASS PROGRAM IS OUR PLAN FOR AN ALTERNATIVE SPRING SEMESTER (PASS). THIS PROGRAM IS AN OPTION FOR SENIORS WHO HAVE COMPLETED THEIR GRADUATION REQUIREMENTS BY THE END OF THE FIRST SEMESTER OF THEIR SENIOR YEAR. STUDENTS CAN USE THEIR TIME TO:

- WORK
- INTERN
- TAKE COLLEGE COURSES
- TAKE AHS COURSES
- A COMBINATION OF THE ABOVE



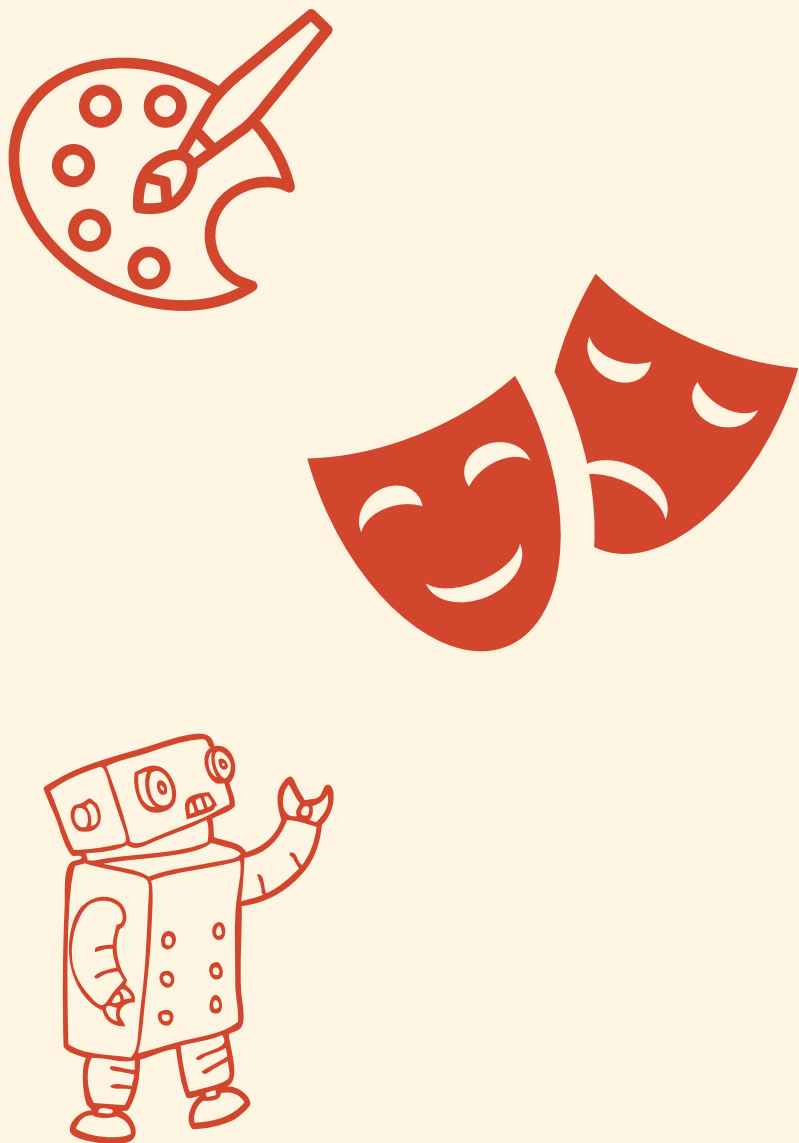
SENIOR CAPSTONE RESEARCH

ALL SENIORS PARTICIPATE IN A RESEARCH PROJECT. WHILE THIS PROJECT HAS TRADITIONALLY BEEN A LITERATURE REVIEW, STUDENTS NOW HAVE THE OPTION TO CONDUCT THEIR OWN RESEARCH. THEY WORK WITH OUR FACULTY TO COLLECT AND ANALYZE THEIR DATA AND PRESENT THEIR FINDINGS.



AMESBURY HIGH SCHOOL

COCURRICULAR OFFERINGS



CLUBS

- MATH TEAM
- MODEL UN
- CHORUS/CHOIR
- YEARBOOK
- AHS WEEKLY NEWSPAPER
- BAND
- BOOK WORMS
- ART & CAMERA CLUB
- DRAMA
- GAY/STRAIGHT ALLIANCE
- ROBOTICS
- LITERARY MAGAZINE
- PACT
- ENVIRONMENTAL CLUB
- INTERACT
- CLASSIC VIDEO GAME CLUB

SPORTS

- SOCCER
- FOOTBALL
- FIELD HOCKEY
- CROSS COUNTRY
- GOLF
- BASKETBALL
- INDOOR TRACK
- ICE HOCKEY
- WRESTLING
- CHEERLEADING
- LACROSSE
- OUTDOOR TRACK
- TENNIS
- BASEBALL
- SOFTBALL



HONOR SOCIETIES

- NATIONAL HONOR SOCIETY
- ENGLISH
- FOREIGN LANGUAGE
- HISTORY
- SCIENCE
- MATH
- TRI M MUSIC
- QUILL AND SCROLL (PUBLICATIONS)

STUDENT GOVERNMENT

- STUDENT COUNCIL
- CLASS OFFICE
- STUDENT ADVISORY COUNCIL



AMESBURY HIGH SCHOOL

SOCIAL EMOTIONAL SUPPORT

OVERVIEW

AT AHS, WE WORK HARD TO PROVIDE SOCIAL EMOTIONAL SUPPORT FOR OUR STUDENTS. WE DO THIS THROUGH STAFFING, PROGRAMMING, AND COMMUNITY CONNECTIONS. WE ALSO HAVE SPENT TIME WITH OUR FACULTY REVIEWING THE CASEL SOCIAL-EMOTIONAL COMPETENCIES AND EMBEDDING THEM DIRECTLY INTO OUR ACADEMIC CURRICULUM, ASSESSMENT, AND INSTRUCTION. THESE COMPETENCIES INCLUDE:

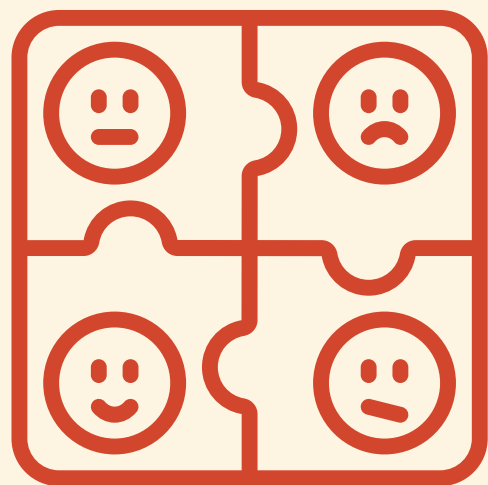
SELF- MANAGEMENT

SELF- AWARENESS

RESPONSIBLE DECISION-MAKING

RELATIONSHIP SKILLS

SOCIAL AWARENESS



GUIDANCE TEAM

SUE SAURMAN

SCHOOL COUNSELOR/DEPARTMENT HEAD

ERIKA LYNCH

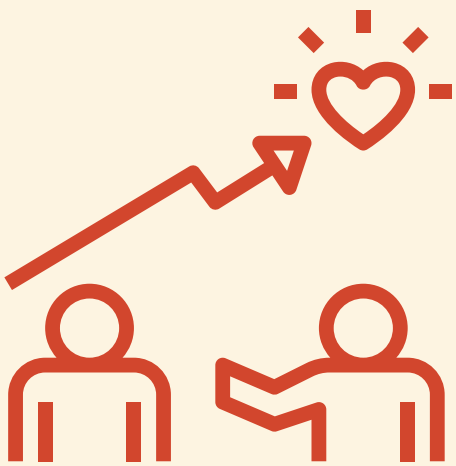
SCHOOL COUNSELOR

MATT SYDOW

SCHOOL COUNSELOR

GWEN FOLEY

GUIDANCE SECRETARY



WIN BLOCK: WHAT I NEEED

WIN BLOCK IS A 30 MINUTE OPPORTUNITY BLOCK THAT STUDENTS HAVE IN THEIR SCHEDULE EACH DAY. WIN BLOCK IS USED FOR MANY PURPOSES INCLUDING:

ADVISORY

EACH WEDNESDAY, STUDENTS PARTICIPATE IN OUR ADVISORY PROGRAM WHERE THEY HAVE THE OPPORTUNITY TO TALK ABOUT SOCIAL SKILLS AND BUILD RELATIONSHIPS. WE USE A CURRICULUM NAMED "CHARACTER STRONG."

EXTRA HELP

MANY STUDENTS USE THIS TIME TO GET EXTRA HELP FROM A TEACHER. THEY MAY PREPARE FOR AN ASSESSMENT, MAKE UP MISSED WORK, OR DIVE MORE DEEPLY INTO THE CONTENT. STUDENTS ALSO HAVE ACCESS TO OUR LIBRARY DURING THIS TIME.

WORKSHOPS AND MEETINGS

INSTEAD OF PULLING STUDENTS FROM CLASS, WE USE THIS BLOCK TO HOLD IMPORTANT MEETINGS AND HOST WORKSHOPS WITH OUTSIDE COMMUNITY MEMBERS.

COMMUNITY CONNECTIONS

PETTENGILL HOUSE

PGH IS OUR SOCIAL SERVICES CONNECTION. AND WE CAN REFER STUDENTS AND FAMILIES NEEDING ADDITIONAL SUPPORT

ELIOT BEHAVIORAL HEALTH

LAHEY BEHAVIORAL PROVIDES BOTH COUNSELING SERVICES ON AHS CAMPUS AND SUPPORTS US WITH CRISIS EVALUATIONS.

SCHOOL RESOURCE OFFICER PROGRAM (SRO)

OUR DISTRICT HAS TWO SROS WHO PARTNER WITH THE SCHOOLS TO DO PREVENTION WORK AND SUPPORT SCHOOL LEADERS.

PACT

PARTNERSHIP OF AMESBURY COMMUNITY AND TEENS
PACT IS THE BRIDGE BETWEEN OUR YOUTH AND THE COMMUNITY. RECENTLY AWARDED A DRUG-FREE COMMUNITIES FEDERAL GRANT, THIS GROUP IS WORKING TO BUILD ASSETS.

AMESBURY HIGH SCHOOL

EXAMPLE FRESHMAN SCHEDULE

	QUARTER ONE	QUARTER TWO	QUARTER THREE	QUARTER FOUR
BLOCK ONE	COLLEGE PREP FRESHMAN ENGLISH			
BLOCK TWO	HONORS WORLD HISTORY			
BLOCK WIN				
BLOCK THREE	HONORS ALGEBRA I			
BLOCK FOUR (LUNCH)	CP FRENCH I		FUNDAMENTALS OF MOVEMENT	ELECTIVE CHOICE
BLOCK FIVE	CP BIOLOGY			
BLOCK SIX	ELECTIVE CHOICE	ELECTIVE CHOICE	ELECTIVE CHOICE	ELECTIVE CHOICE