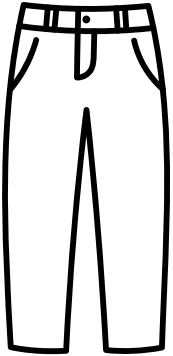


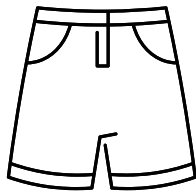
SFMS STUDENT DRESS CODE

Approved **SOLID** Colors for ALL Bottoms:

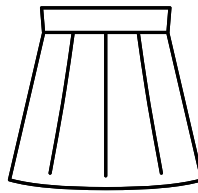
PANTS



SHORTS



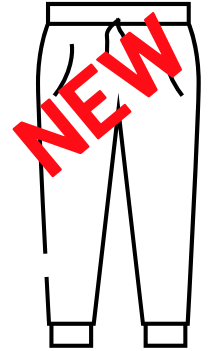
SKIRTS



LEGGINGS



JOGGERS



- Any **SOLID** color pants
- NO holes or tears
- NO pajamas
- Fingertip length

Approved **SOLID** Colors for ALL Tops:

WHITE

SWEATSHIRTS



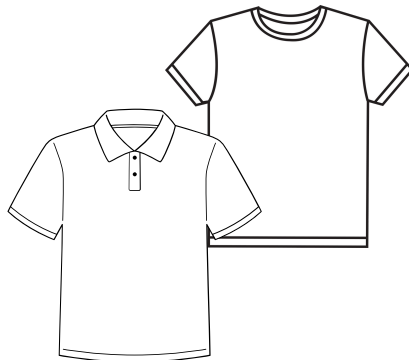
YELLOW

NAVY

BLACK

GRAY

SHIRTS



SPIRIT SHIRTS

SFMS
and
PTA

HOODIES



Official SFMS and PTA spirit shirts can be worn daily!
T-2-4 Wednesdays: College, Military, and SBISD shirts can be worn.

Shoes/Footwear

- Tennis/Athletic styles preferred. CROCs are allowed.
- No slides, water, shower or slippers allowed.
- Sandals are allowed but must have a back.

Hair/Facial Hair

- No facial hair of any kind.
- No hats, bandanas, do-rags, hair nets or bonnets.
- No hair styles that would cause a distraction in class.

Jackets/Coats May be worn in school if they follow uniform approved tops guidelines for color and design. If not, they may be worn to school, but not inside the classroom.

Jewelry/Accessories

- Chains on clothing are not permitted.
- Piercings on the face are limited to ears (no gauges).
- Jewelry must be tasteful and not excessive.
- No tattoos, sunglasses or writing or drawing on oneself.

Guidelines for Bottoms

PANTS, SHORTS, SKIRTS, LEGGINGS and JOGGERS:

- **NO SAGGING** - Pants and joggers must fit at waist, be hemmed, and must not touch or drag the ground or be cut at the seam.
 - **NO prints, tears or holes.**
 - **NO underwear showing.**
- Baggy or oversized style pants are NOT permitted.
- **Leggings:** Backside must be covered, no see-through material.
- **Shorts/skirts: NO ROLLING** to make shorter.
- **Joggers** must be fitted at waist and not sagging (no designs: example stripes down the sides)

Guidelines for Tops

SWEATSHIRTS, SHIRTS, HOODIES and UNDERSHIRTS:

- **Official SFMS and PTA shirts can be worn daily!**
- **T-2-4 T-shirts, sweatshirts, hoodies can be worn only on Wednesdays (College, Military or SBISD)**
- Hoodies - **HOODS CANNOT BE WORN OVER THE HEAD**
- **Tops must be SOLID in color.** No dual tones (logo may not be larger than 2X2 inches **on the pocket**).
- **No design permitted on sleeves, chest or back of ANY TOPS** (excludes PTA and SFMS designed spirit shirts).
- **No oversize sweatshirts or hoodies or shirts** (shorts and skirts must be seen).
- **Midriff tops: (sweatshirts, hoodies or shirts) are not permitted.**
- Jackets and coats may be worn in school if they follow the approved tops guidelines for color and design. If not, they may be worn to school, but not inside the classroom.