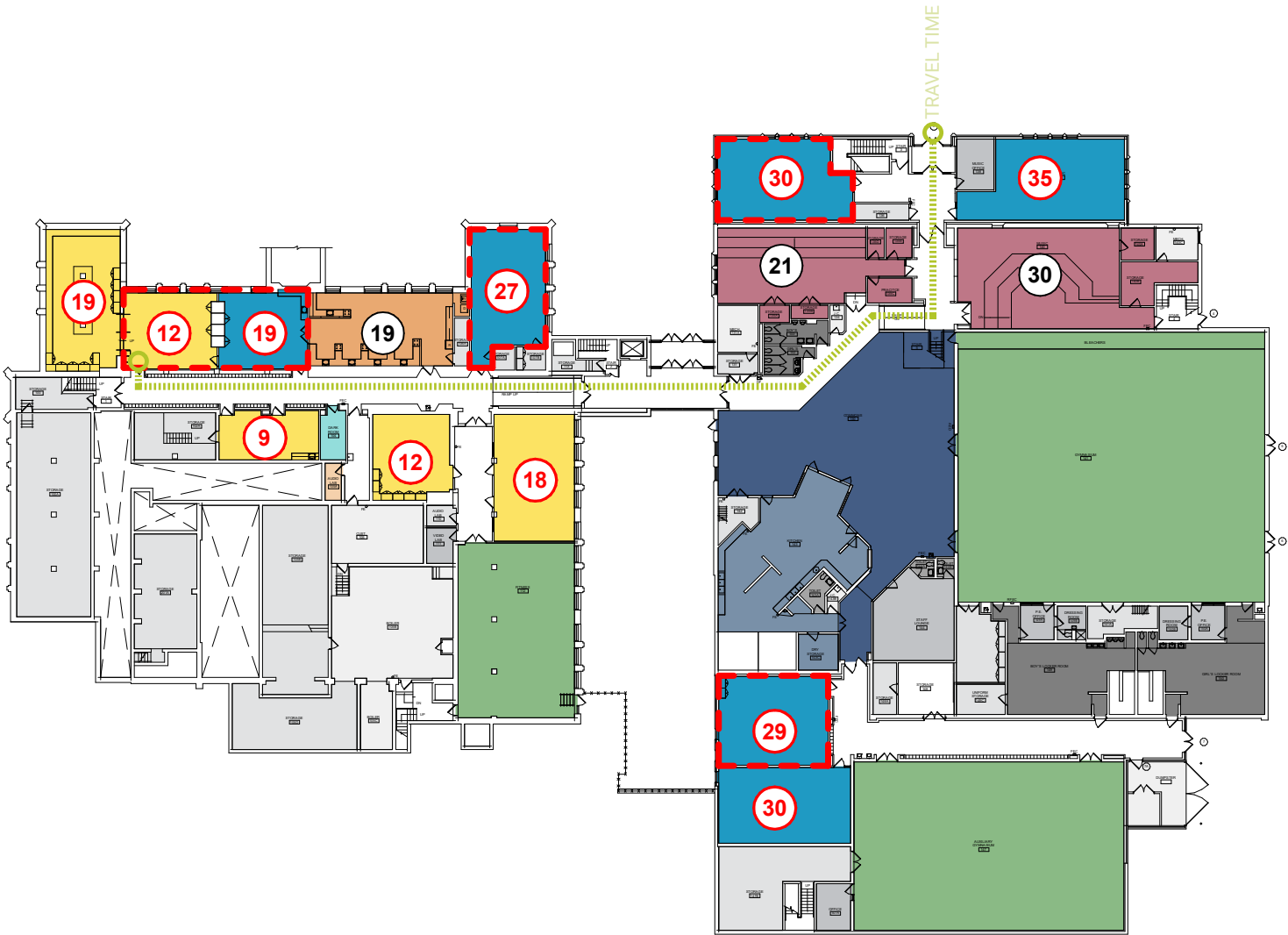




# Abbott Middle School

949 Van Street, Elgin, IL 60123

BUILDING SUMMARY			
Gross SF	117,288	Number of Levels	3
Year Built	1931	Number of Additions	2



LEVEL 1

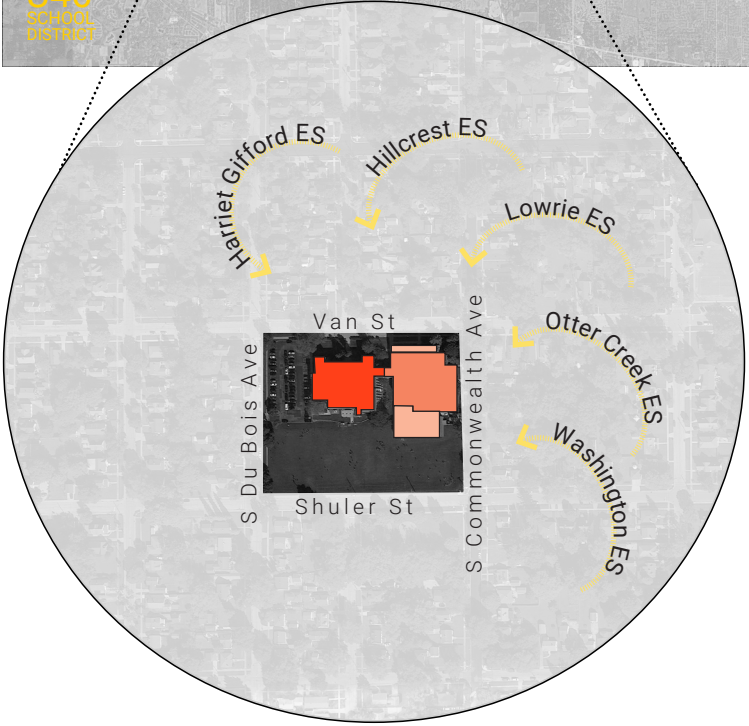
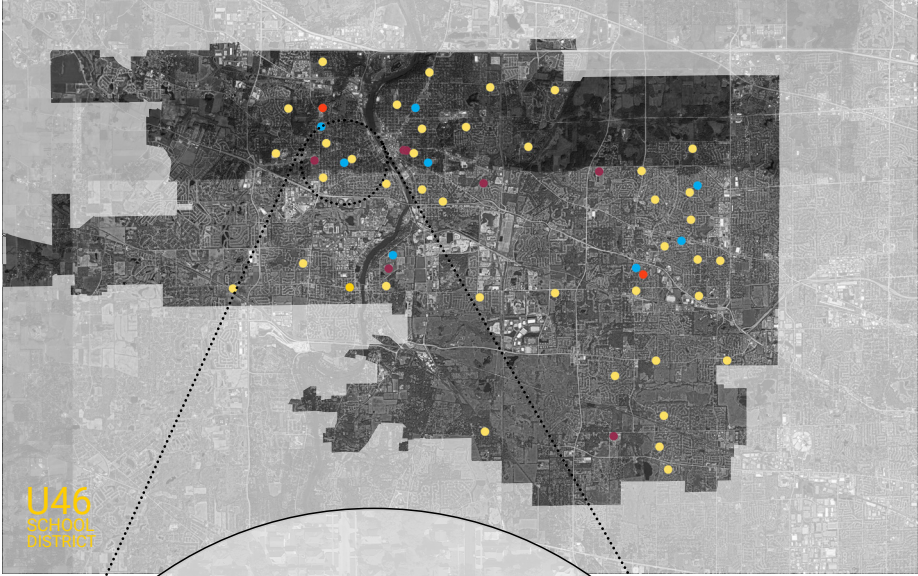
Phase 1 Snapshot



FACILITY LOCATION

TRAVEL

PLAN KEY



**Current**  
Acreage:  
**4.61**  
ACRES

**Guideline**  
Acreage:  
**21.66**  
ACRES

\* Guideline Acreage recommended by State of Illinois = 5 acres plus 1 acre per every 100 students

1931  
1975  
2001

**2-4 MIN** Furthest approximate travel time from one location to another for an average **Middle School Student**.

- Administration
- Building Support
- Cafe Support
- Commons / Cafeteria
- Core Classroom
- Elective Classroom
- Gym / Fitness
- Kindergarten / ECC
- Learning Center
- Media Lab
- Performance Venue
- Performing Arts Classroom
- Resources
- Science Lab
- Special Education
- Stem / Hands-On Learning
- Restrooms
- Student Support
- Visual Arts

- Travel Path
- Under-sized space
- Room Capacity based on ISBE Guidelines
- Room Capacity based on ISBE Guidelines (not included in Effective Capacity)

January 27, 2021

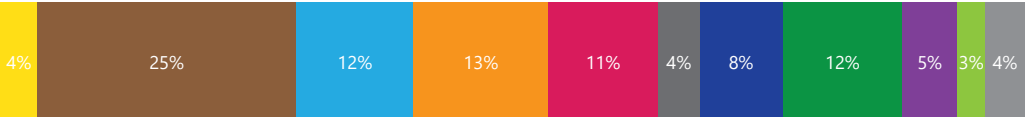


<b>Spatial Educational Adequacy(25%)</b>	<b>C</b>	<b>Facility Condition(35%)</b>	<b>C</b>
(Data collected through Staff Survey)	<b>7.3/10</b>	FCI	.17
Physical Features	7.4/10	<b>Water Usage(5%)</b>	<b>A</b>
Environment Supports Variety	9.3/10	Gallons/SF	4.0
Visual Stimulation	6.7/10	<b>Energy Usage(10%)</b>	<b>D</b>
Future Readiness	5.7/10	<b>Total EUI</b>	<b>65.3kBTU/SF/yr</b>
<b>Building Allocation(25%)</b>	<b>B</b>	Electric	12.9kBTU/SF/yr
Gross SF/student	176	Gas	52.4kBTU/SF/yr
Site Acreage/Guideline	21%		
Mobiles in Use/Basement Used	No/No		

AGGREGATED FACILITY GRADE B-

Educational Adequacy grades were determined by a survey issued to staff. Square Foot/Student grades were determined by building area and enrollment. Facility grades are determined building assessments. Water grades were determined by comparing utility data to the Commercial Buildings Energy Consumption Survey. Energy grades were determined by comparing utility data to the US Dept of Energy's Building Performance Database. Percent in parenthesis indicates weight of category in aggregate facility grade.

Activity mapping is based on survey data (Week in the Life) collected by teachers throughout the district over the course of one week. The teachers provided the learning activity and amount of time spent in that activity. Data was aggregated for the school and is represented by the average percent of time spent in the activity.



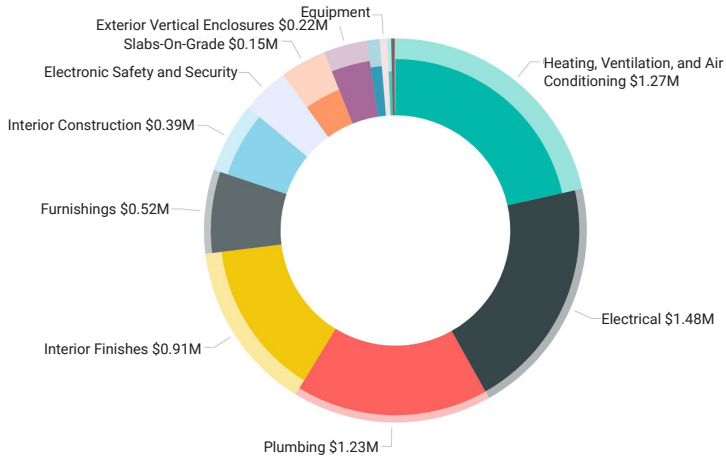
- Creative Brainstorming
- Direct Instruction
- Focused Study
- Group Discussion
- Hands-On Learning
- Housekeeping
- Physical Activities
- Practicing Autonomy
- Presenting or Performing
- Reserach & Reflection
- Transition

What's a Listening Tour?

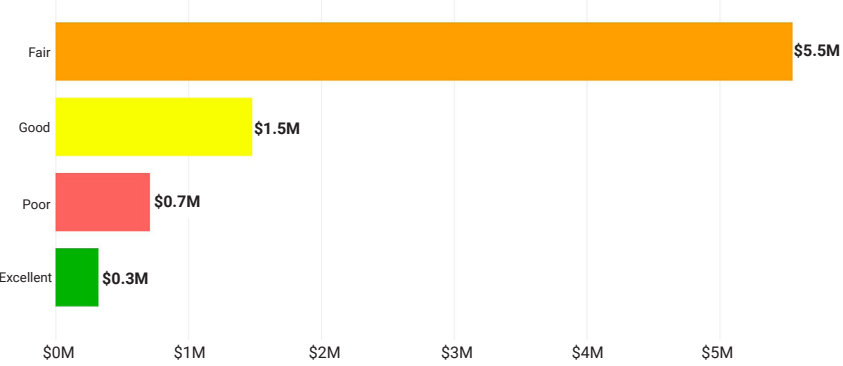
Staff surveys (Listening Tours) were sent to each school where faculty gave input about the strengths and weaknesses of the building. The following comments highlight common themes and concerns.

Listening Tour Comments

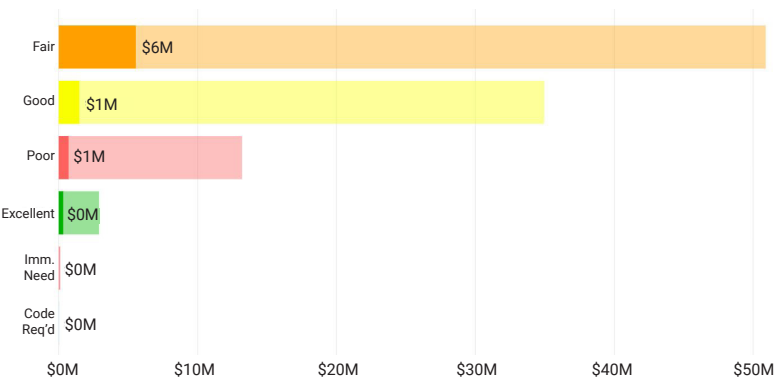
- The school is well-maintained and clean.
- The classrooms are small and need consistent technology.
- The halls are dark in comparison to other school buildings.
- The teachers indicated they need more science labs that align to what they currently teach. More sinks in these labs would be helpful as well.
- Temperature inconsistency is an issue - some rooms are unbearable during spring and summer.
- The historical character of the school is appreciated.



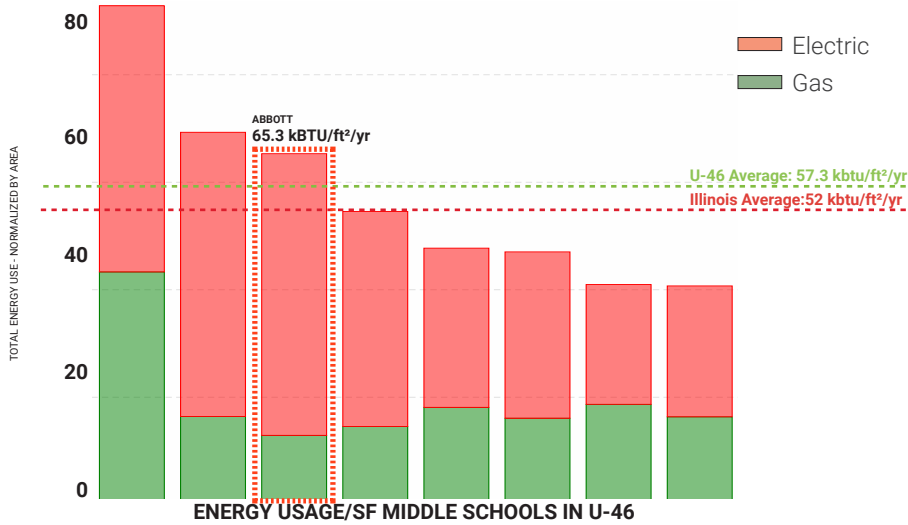
This chart indicates the approximate cost of deferred and anticipated maintenance (in dollars) of items assessed by building system. Highlighted items indicate those items in immediate need, code requirement, poor and fair condition.



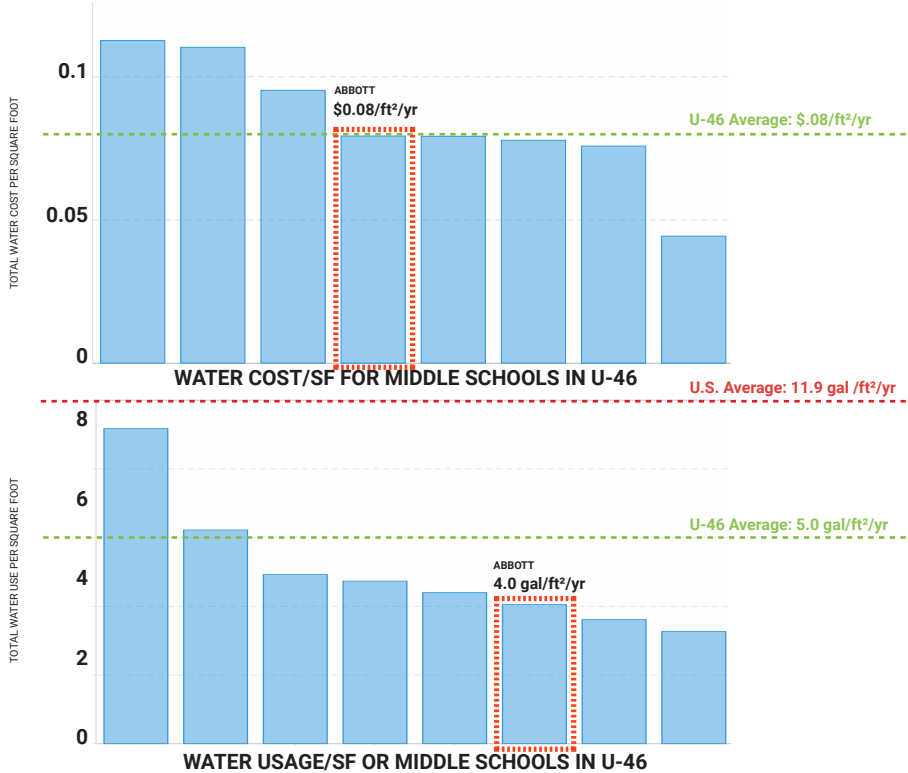
This chart indicates the approximate cost of deferred and anticipated maintenance (in dollars) based on condition of assessed items.



This chart indicates the approximate cost of deferred and anticipated maintenance (in dollars) based on condition of assessed items in relation to the entire cohort of buildings.



Energy Use Intensity (EUI) is a key metric that expresses a building's energy use as a function of its size. Generally, a low EUI signifies good energy performance



Water usage is a key metric that expresses a school's water use and total cost of water in comparison to the other middle schools in the district.

How is this information collected?

The goal of the DLR Group integrated design team is to **collect multiple qualitative and quantitative data points** around the same set of items – for example energy use or learning behavior – **in order to form a holistic picture**. The team collects these data points through the use of utility analysis, expert walkthroughs, focus groups, surveys, and ethnographic observation techniques. The results are validated by cross-checking data points, such as a survey answer and a spot measurement, that should relate to one another.