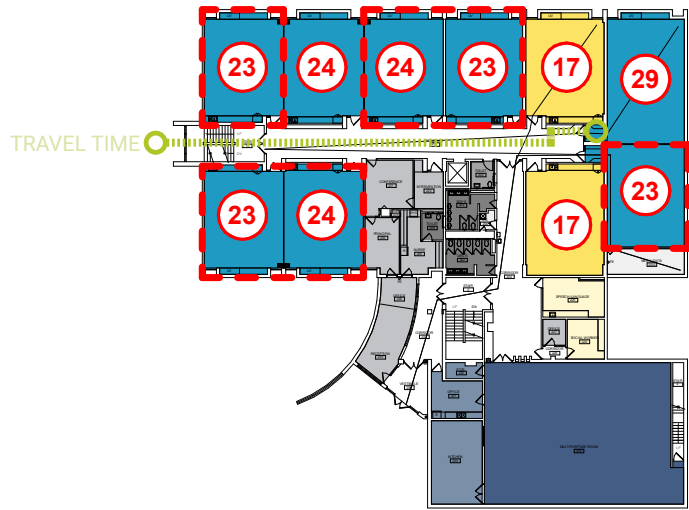




Channing Elementary School

63 S. Channing Street, Elgin, IL 60120

BUILDING SUMMARY			
Gross SF	54,768	Number of Levels	3
Year Built	1968	Number of Additions	2



LEVEL 1



LEVEL 2



LEVEL 0



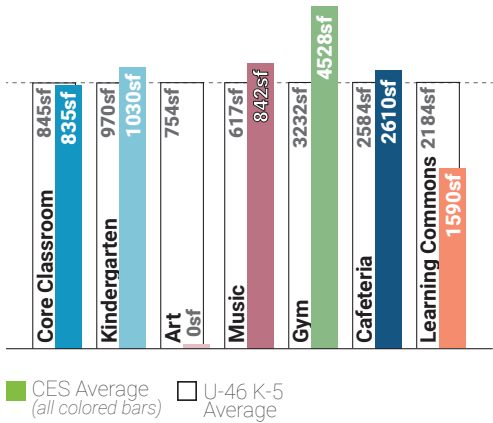
ENROLLMENT METRICS

Occupancy**	1083
Effective Capacity	600
Total Enrollment	452

Occupancy: the maximum number of people that can be housed in a space in accordance with the building/fire code
****NOTE:** Occupancy is NOT the recommended number of students for a space, it is the maximum allowed by code.

Effective Capacity: the amount of students a school can effectively support based on the District's current practices and future vision for teaching and learning. This is calculated based on ISBE's square footage per student guideline. Calculated based on core classrooms, science labs and Special Education spaces.
Enrollment: number of students that attended the facility in 2019-2020.

AREA COMPARISON



* This comparison notes the difference between Channing Elementary School area per student in comparison to the current National average as noted in the 2015 School Construction Report. The master planning process will produce outcomes pertinent to the District as a whole. This is just one metric to compare space.

121 square feet per student : **150** square feet per student
Channing Elementary School 2015 National Low Quartile Number

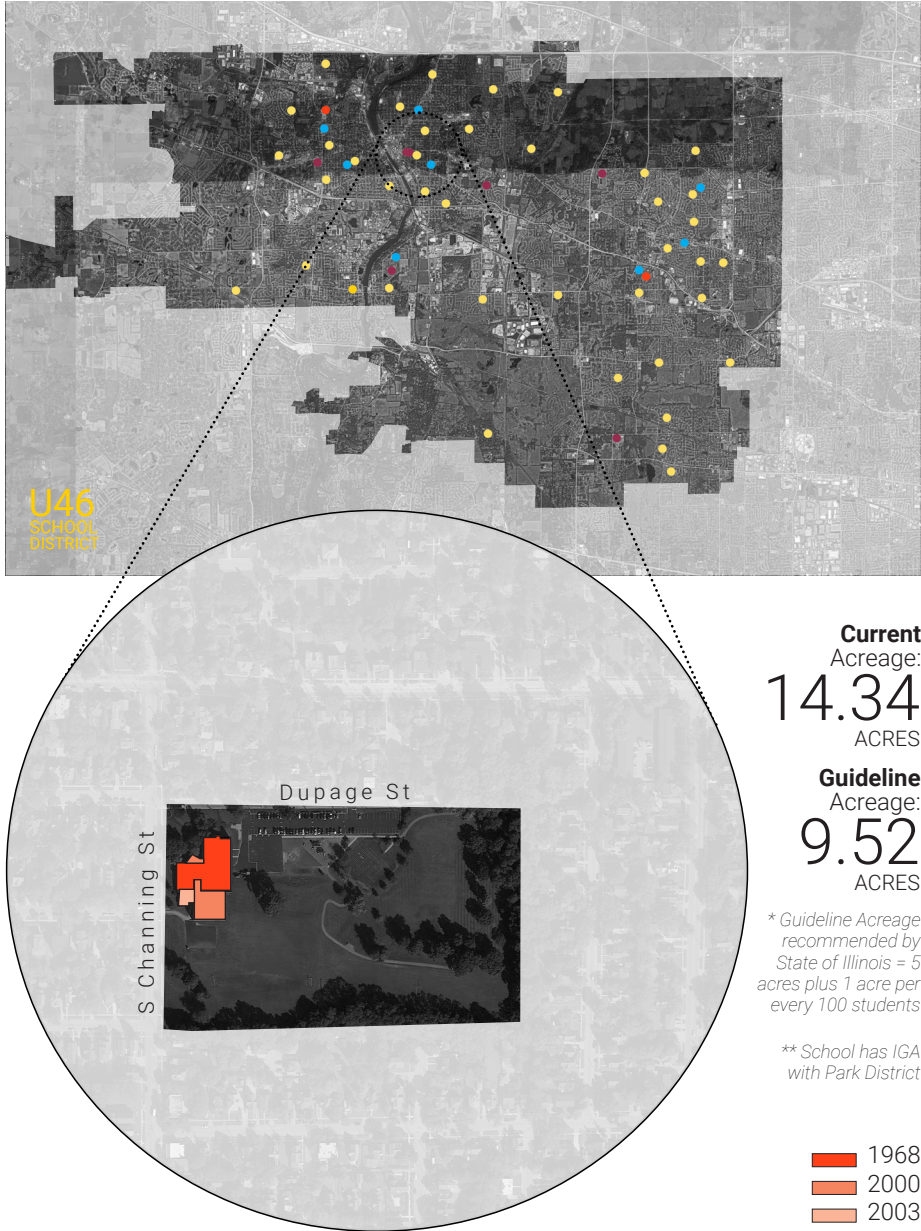


TRAVEL

PLAN KEY

- Administration
- Building Support
- Cafe Support
- Commons / Cafeteria
- Core Classroom
- Elective Classroom
- Gym / Fitness
- Kindergarten / ECC
- Learning Center
- Media Lab
- Performance Venue
- Performing Arts Classroom
- Resources
- Science Lab
- Special Education
- Stem / Hands-On Learning
- Restrooms
- Student Support
- Visual Arts
- Travel Path
- Under-sized space
- Room Capacity based on ISBE Guidelines
- Room Capacity based on ISBE Guidelines (not included in Effective Capacity)

2-4 MIN Furthest approximate travel time from one location to another for an average Kindergarten Student.
1-3 MIN Furthest approximate travel time from one location to another for an average Fourth Grade Student.

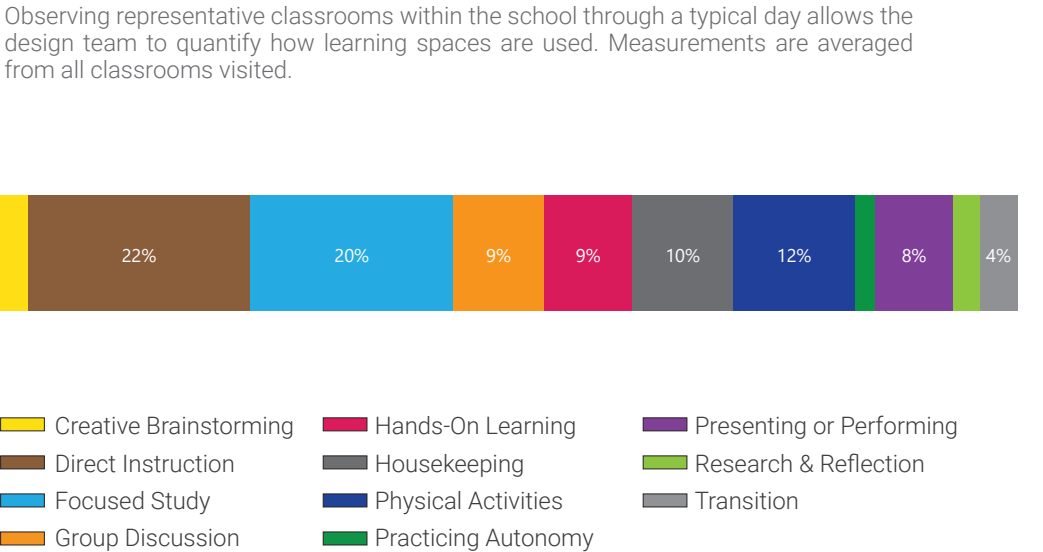


FACILITY GRADES

Spatial Educational Adequacy(25%)	B	Facility Condition(35%)	C
(Data collected through Staff Survey)	8.1/10	FCI	.18
Physical Features	8.6/10	Water Usage(5%)	C
Environment Supports Variety	9.7/10	Gallons/SF	10.5
Visual Stimulation	7.8/10	Energy Usage(10%)	A
Future Readiness	6.2/10	Total EUI	40.0kBTU/SF/yr
Building Allocation(25%)	C	Electric	20.4kBTU/SF/yr
Gross SF/student	121	Gas	19.6kBTU/SF/yr
Site Acreage/Guideline	151%		
Mobiles in Use/Basement Used	No/Yes		
<small>*School has IGA with Park District</small>			
AGGREGATED FACILITY GRADE		B-	

Educational Adequacy grades were determined by a survey issued to staff. Square Foot/Student grades were determined by building area and enrollment. Facility grades are determined building assessments. Water grades were determined by comparing utility data to the Commercial Buildings Energy Consumption Survey. Energy grades were determined by comparing utility data to the US Dept of Energy's Building Performance Database. Percent in parenthesis indicates weight of category in aggregate facility grade.

ACTIVITY MAPPING



LISTENING TOUR

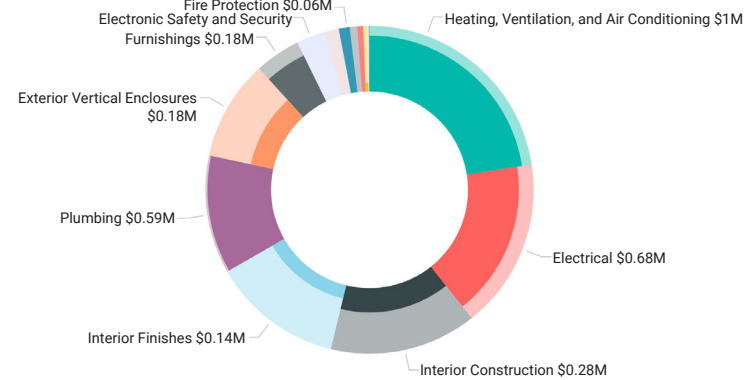
What's a Listening Tour?

Staff surveys (Listening Tours) were sent to each school where faculty gave input about the strengths and weaknesses of the building. The following five comments highlight common themes and concerns.

Listening Tour Comments From Staff

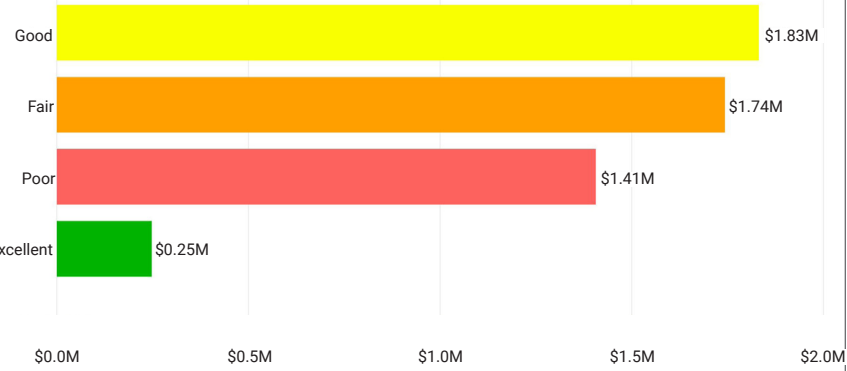
- The student restrooms need to be addressed. The plumbing issues cause longer breaks, which cut into instruction time.
- The gym is great but gets very hot.
- The new windows and flooring will help but adding some color would go a long way!
- More classrooms are needed.
- The parking lot and playground are awesome!

FACILITY BY BUILDING SYSTEM



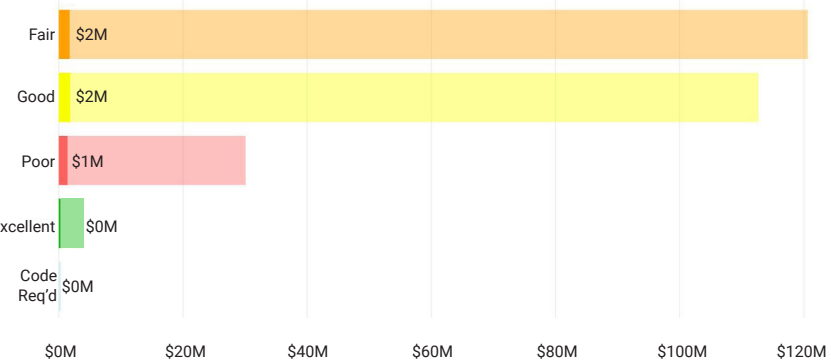
This chart indicates the approximate cost of deferred and anticipated maintenance (in dollars) of items assessed by building system. Highlighted items indicate those items in immediate need, code requirement, poor and fair condition.

FACILITY BY CONDITION



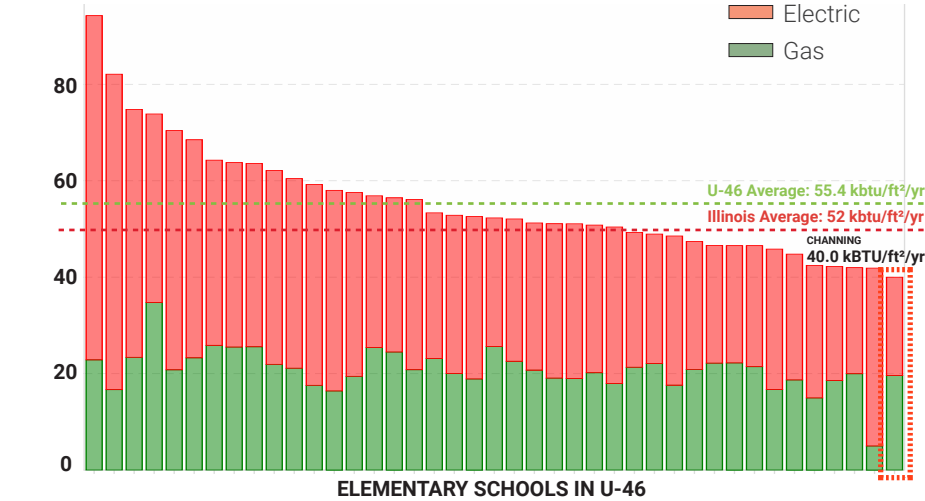
This chart indicates the approximate cost of deferred and anticipated maintenance (in dollars) based on condition of assessed items.

FACILITY COMPARED TO COHORT



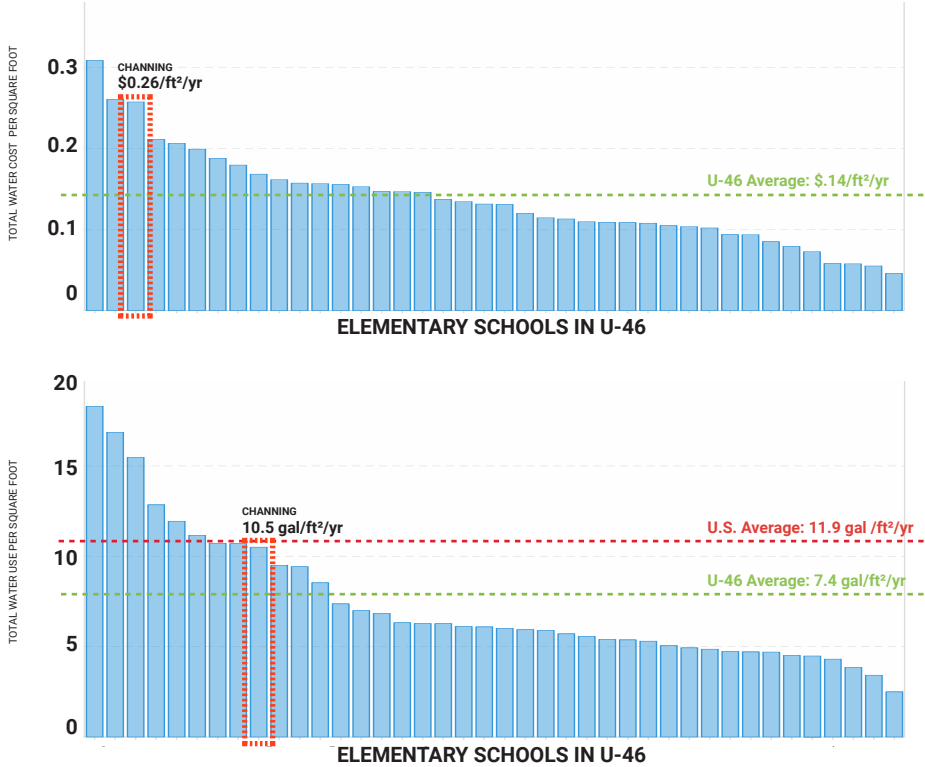
This chart indicates the approximate cost of deferred and anticipated maintenance (in dollars) based on condition of assessed items in relation to the entire cohort of buildings.

ENERGY USAGE (EUI)



Energy Use Intensity (EUI) is a key metric that expresses a building's energy use as a function of its size. Generally, a low EUI signifies good energy performance

WATER USAGE + WATER COST



Water usage is a key metric that expresses a school's water use and total cost of water in comparison to the other elementary schools in the district.

How is this information collected?

The goal of the DLR Group integrated design team is to **collect multiple qualitative and quantitative data points** around the same set of items – for example energy use, air quality, or learning behavior – **in order to form a holistic picture**. The team collects these data points through the use of sensors (in the space for 1-7 days), spot measurement equipment, expert walkthroughs, focus groups, surveys, and ethnographic observation techniques. The results are validated by cross-checking data points, such as a survey answer and a spot measurement, that should relate to one another.