



Jefferson High School EXECUTIVE SUMMARY

PROVIDED BY FINDORFF

700 W. Milwaukee Street • Jefferson, WI 08.09.2024

Overview

The summer months are flying by, and the Jefferson High School project is on a roll! Above the Skills Lab Addition, roofing crews have finalized the coping trim. New bollards and site concrete have been poured into place, along with the completion of preparation work for new asphalt. Finishes are in full swing in the classroom and shop areas, too! Painting is nearly complete in all classroom spaces, while new ceiling grid and tile follows closely behind. Findorff carpentry crews are installing new doors in the classroom spaces, while casework installation continues to flow through the remaining shops. Finally, the classroom spaces are receiving their new resilient floors, while installing crews are preparing the shop floors for new sealed concrete and epoxy resinous floors. Lots of changes coming your way!



Photo from the Employee Recognition Lunch held in the Skills Lab Addition for Findorff, EUA, and SDoJ, and field crews from each trade.

Recently

- Asphalt pavement preparation at the Skills Lab Addition
- New overhead doors at Shops and the Skills Lab Addition
- Casework installation at Shops and Classroom areas
- Resilient flooring installation at the Classroom areas
- Ceiling tile drop with new MEPF devices in Classroom areas

Looking Ahead

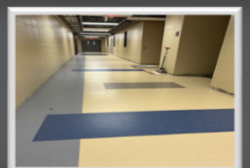
- Asphalt pavement at the Skills Lab Addition
- Door and interior glass install at the Classroom areas
- Resinous/sealed concrete flooring at all Shops and Test Kitchen/Head House areas
- Equipment move-in to Shops and Classroom areas



The Skills Lab Addition with its newly installed overhead door! The site surrounding the building is currently prepped to receive new asphalt as well.

DID YOU KNOW?

The Jefferson High School project has been receiving many new finishes lately, including new flooring in all the renovated and new spaces. The classroom and corridor spaces feature six distinct colors of resilient flooring, while the Shop spaces will sport new epoxy resinous and sealed concrete floors. Of the new flooring systems, the project will entail over 9,000 square feet of new resilient and resinous floors and over 20,000 square feet of newly sealed concrete floors!



Questions?

Project Manager, Jonathan Winch / (608) 219-5091 / jwinch@findorff.com

Project Engineer, Brennan Sullivan / (920) 319-2077 / bsullivan@findorff.com

Findorff
BUILDING & BEYOND



East Elementary EXECUTIVE SUMMARY

PROVIDED BY FINDORFF

120 S. Sanborn Ave • Jefferson, WI PAGE 2

What's new at East Elementary?

The finishing touches are in full swing. Crews are sanding and refinishing the wood flooring on level 2, and they are looking great. It's wild to think that these floors are nearly 90 years old and still in such great shape! Painters are hard at work throughout the school, and carpentry crews are installing casework and countertops. The ceiling grid and tile has been installed on level 2 and much of level 1, which really completes the space.

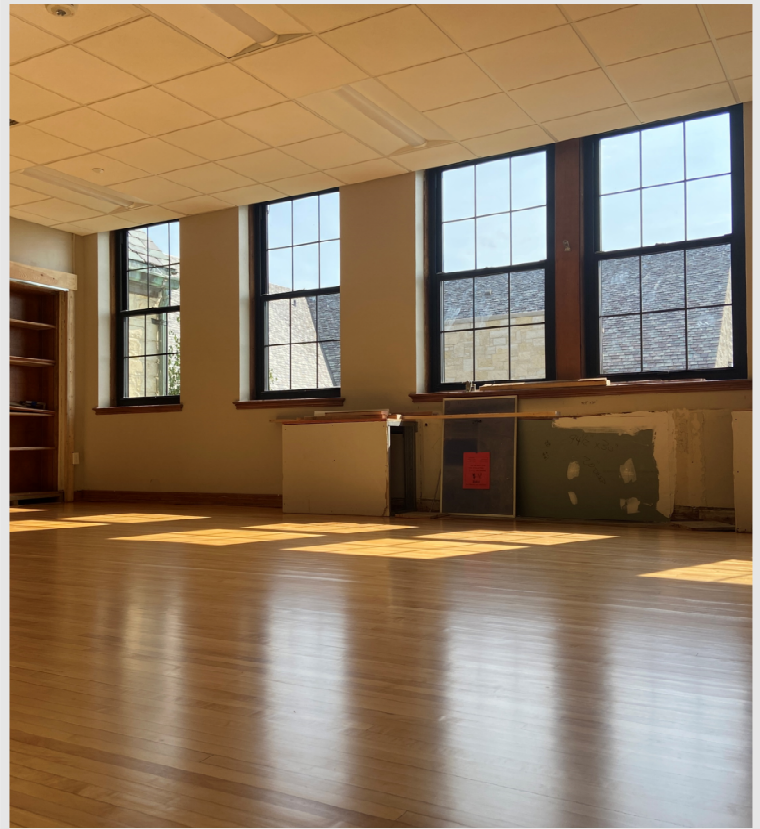
Outside, the north roof is completed for the start of school. Roofing crews are continuing to work their way around the building. Window replacement continues to give the building a fresh new look. East Elementary is looking sharp, almost ready to greet all the old and new faces on the first day of school!



Countertops have been installed and await finishing touches.



The north roof copper and LudoSlate is complete!



Floors in the level 2 classrooms are being refinished and looking shiny!

Questions?

Project Manager, Jonathan Winch / (608) 219-5091 / jwinch@findorff.com

Project Engineer, Maura Cannon / (714) 747-4844 / mcannon@findorff.com

Findorff
BUILDING & BEYOND



West Elementary EXECUTIVE SUMMARY

PROVIDED BY FINDORFF

900 W. Milwaukee Street • Jefferson, WI PAGE 3

Wildcats Wear Purple!

The cafeteria has a new look: Epoxy flooring and purple accent walls bring a fresh feel to the space. In the restrooms, the purple wall tile has been installed and really pops! With just a few final touches, like toilet partitions and plumbing, the bathrooms will be complete. Heading on over to the library, painting is underway. Outside, the new generator has been placed and is almost ready for start up. Just a few more weeks until students will be back in school enjoying their refreshed space.

Recently

- Painting Throughout the School
- Tile and Flooring Installed in Toilet Rooms and Classrooms
- Epoxy Flooring Installed in the Cafeteria

Looking Ahead

- Continued Tile and Flooring throughout the School
- Continued Painting in Library and Classrooms
- Final Cleaning in Classrooms



The cafeteria's new look with purple walls and epoxy flooring.



Wall tile in toilet rooms is looking great!



The new generator has been tied in.

Questions?

Project Manager, Jonathan Winch / (608) 219-5091 / jwinch@findorff.com
Project Engineer, Maura Cannon / (714) 747-4844 / mcannon@findorff.com

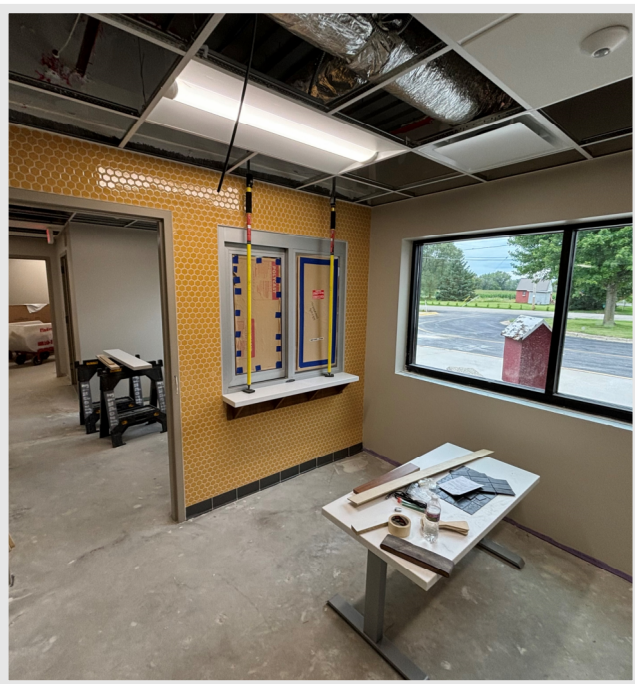
Findorff
BUILDING & BEYOND



Sullivan Elementary EXECUTIVE SUMMARY

PROVIDED BY FINDORFF

206 S. Taft Ave • Jefferson, WI PAGE 4



New Tile in the waiting room!

What's Buzzin' at Sullivan Elementary?

Sullivan Elementary's new wall tile in the reception area has added a fun splash of color – we think the Sullivan Stingers will approve! Carpentry crews have begun to install casework in the reception area and work room. The new windows are in place, and crews are gearing up to lay flooring and finish the final coat of paint. We're getting excited for the first day of school!

Recently

- Wall Tile Installed in Waiting Room
- Windows Installed in Waiting and Reception Room
- Casework Installed in Work Room and Nurses Office
- Finishing and Painting of Drywall throughout School

Coming Up Next

- Floor Finishes in Toilet Rooms
- Final Paint Coat throughout School
- Countertop Install in Passage
- Toilet Partitions and Accessories Install in Toilet Rooms
- Final Clean throughout School



Casework has been installed in the work room.



New windows and doors are looking amazing!

Questions?

Project Manager, Jonathan Winch / (608) 219-5091 / jwinch@findorff.com

Findorff
BUILDING & BEYOND