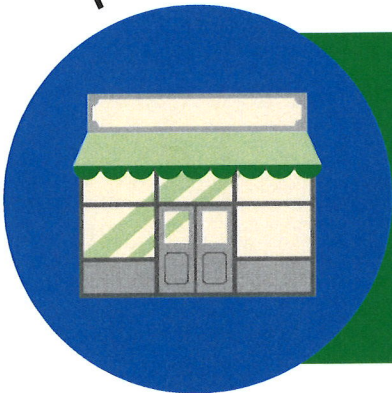


# PRESCHOOL registration 2025-2026


## PARENT PORTAL

If you haven't set up your parent portal yet, please email [marss@isd2135.org](mailto:marss@isd2135.org) to get your activation code.


### CAMPUS



## SCHOOL STORE

In your Parent Portal click  and go to **School Store**. Preschool registration is located under **Community Ed**.

## REGISTER FOR PRESCHOOL

Select your class. Choose your student from the drop-down. Then add to cart. When you are ready, click  and check out.



## WATCH FOR 2025-2026 SCHOOL YEAR INFORMATION

Please make sure you have up-to-date contact information in your parent portal. We will send out communications via email, mail, and Facebook.

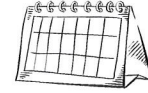


# Preschool



## Registration

To register, please visit the Community Ed section of the Parent Portal School Store. There is a non-refundable registration fee of \$35.



## Schedule

Preschool will line up closely with the school calendar. Check out the posted calendar.



## Snack


Snacks and milk/juice are included!




## Billing

Enrollment in our Preschool Program is for the full academic year, from September through May. Tuition is billed on a bi-weekly basis during this period through the program Procure. Please note that tuition payments are required for the entire duration of the school year, even if you choose to withdraw your child before the end of the year. Your invoice will be generated every Monday and payment will be due on the following Sunday. To make things easier for you, an automated payment through Procure will be set up for the due date.

For more info:

 [www.isd2135.k12.mn.us](http://www.isd2135.k12.mn.us)

 507-524-3918

 [marss@isd2135.org](mailto:marss@isd2135.org)



Early Childhood Education

## Preschool Classes

### **\$35 Registration fee**

NON-REFUNDABLE

Classes are filled on a first-come, first-served basis, so register early.

Scholarships are available on request, but are limited.

Before enrolling your child in preschool, we kindly ask that they have completed potty training to ensure a positive experience for both your child and their classmates.

### **FLYING EAGLES**

This class is for children who are Age 4 by Sept. 1 or older and entering kindergarten in the fall of 2026.

**M W F** 8:30a - 2:30p

**\$135.00 BI-WEEKLY**  
(LUNCH, SNACK AND MILK INCLUDED)

I acknowledge that enrollment in the preschool program is for the full academic year (Sept. - May). I agree to pay bi-weekly tuition throughout this period, even if I choose to withdraw my child before the end of the school year.

### **JUNIOR EAGLES**

This class is for children who are Age 3 by Sept. 1 or older and entering kindergarten in the fall of 2026 or 2027.

**T H** 8:30a - 2:30p

**\$97.00 BI-WEEKLY**  
(LUNCH, SNACK AND MILK INCLUDED)

I acknowledge that enrollment in the preschool program is for the full academic year (Sept. - May). I agree to pay bi-weekly tuition throughout this period, even if I choose to withdraw my child before the end of the school year.

2025-2026

Preschool Classes

