



International School
Bangkok

ANNUAL REPORT
2024-25



HEAD OF SCHOOL PERSPECTIVE

Dr. Carolyn Mason Parker

As we reflect on this academic year, it is with a deep sense of celebration that I share this annual report with you. At KIS, our mission to offer a challenging and dynamic international education supported by our Core Values has remained our compass, guiding every learning experience, celebration, and challenge.

This year, we witnessed remarkable growth and achievement across our school. In the Primary School, we saw how "Shrek Jr" showcased our students' creativity, teamwork, and confidence on stage. Likewise, our rapid earthquake response in March, reminded us of the importance of taking action ethically and caring for the community, key pillars of our KIS Core Values. In the Secondary School, student agency took center stage through impactful events such as the MYP Personal Project Exhibition, where students explored everything from environmental innovation to cultural identity with depth and passion. The DP Visual Arts Showcase was another highlight, offering our community a moving expression of student voice through visual storytelling.

Our commitment to a nurturing passion in self and others was also seen through an exciting year in sports. From Primary Swim Galas to Secondary MRISA competitions, our athletes demonstrated determination, sportsmanship, and school spirit. These moments of friendly competition reinforced the characteristic of respect for ourselves, our teammates, and our opponents.

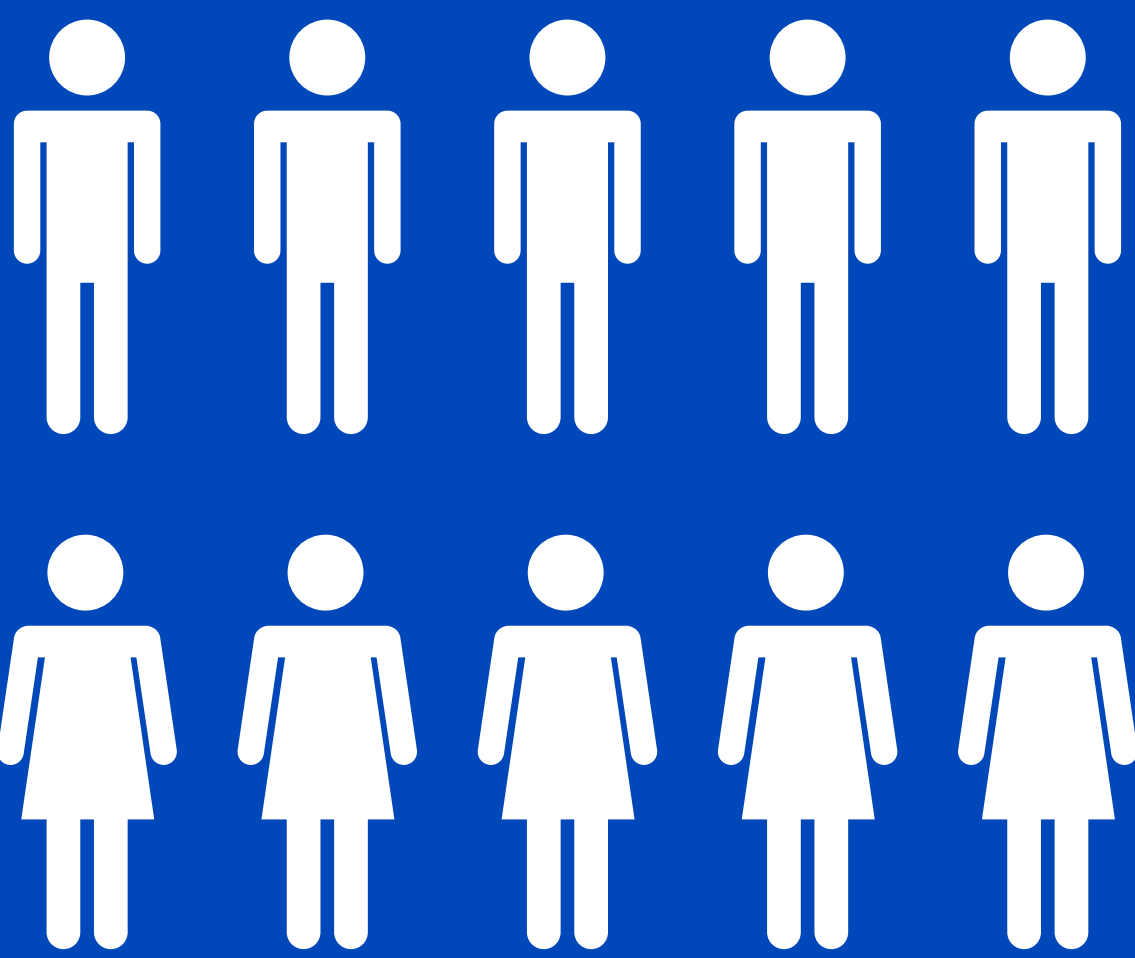
Equally heartwarming were the shared experiences that brought us together as a community. The Mother Language Day, Loy Krathong, the Lunar New Year and the wonderful Community Fair were celebrations of our diversity and togetherness. Families, teachers, students, and staff gathered not only to celebrate different cultures, but also to connect and support one another – living our Core Value of creating a caring and inclusive community.

Throughout the year, we were reminded that belonging is not simply about being present, it is about feeling seen, valued, and supported. Whether welcoming new families, cheering at a sports day, participating in student-led service initiatives, or supporting each other through challenges, we have upheld the KIS Core Values in all we do.

As you read through the pages of this report, I hope you see what I see: a vibrant, resilient, and compassionate school community that continues to learn, grow, and strive together. Thank you to every student, parent, teacher, and staff member for making this year a truly memorable one. I look forward to the future we will continue to build together.



OUR YEAR BY
NUMBERS



842
Student Body

CLASS OF
2025

53
Graduates



IB Score
Average:
35

176
New Enrollments

46%
International Students

14%
Above 40 pts



47
Nationalities

676
University
offers

13
Countries



* 2025 world average
IB score: 30.58 pts.

D1

STRIVING FOR
UNDERSTANDING

PRIMARY SCHOOL

SOCIAL EMOTIONAL LEARNING (SEL)

This year in Primary, we continued to nurture student wellbeing through engaging guidance lessons and class meetings that focused on self-management, organization, and the social skills that help students flourish. From learning how to stay focused and follow routines to practicing flexible thinking and resolving conflicts peacefully, students built valuable tools to navigate their daily lives with confidence and care.

We also marked important community moments together such as celebrating the UN International Day of Peace with age-appropriate activities across the school. Early Years students explored peaceful play, while older grades took part in role-plays and global conversations with “Mystery Guests” to reflect on empathy, curiosity, and cooperation. Another highlight was the student-friendly screening of Screenagers for Grades 3–5. This opened up great discussions about healthy digital habits and balancing screen time. Whether through classroom lessons, special events, or everyday interactions, our focus remained on helping students connect with others, express themselves with confidence, and grow into kind, thoughtful members of the KIS community.





■ MATH

This year in Primary Mathematics, we placed a strong focus on helping students deepen their understanding by following the Concrete-Pictorial-Abstract (CPA) approach. By moving from hands-on learning experiences to visual models and then to more abstract representations, students developed a stronger grasp of core mathematical concepts at every stage. Teachers also used Exemplars across grade levels as a shared resource to monitor student progress over time, encouraging consistent reflection and growth in problem-solving.

One of the highlights of the year was our joyful celebration of Pi Day! Students amazed us with their ability to recite dozens of digits of Pi with astonishing accuracy, and the energy during the competition was electric. Of course, the fun wasn't just about the numbers—some lucky (and slightly sticky) teachers also found themselves on the receiving end of a few well-aimed pies! With an emphasis on reasoning, perseverance, and communication, our math program continues to empower students to think flexibly, solve problems creatively, and develop a lifelong love of mathematics.

■ THAI CULTURE AND LANGUAGE

This year, our Thai program embraced a more concept-driven approach to teaching and learning, helping students make deeper connections between language, culture, and meaning. Through rich discussions, inquiry, and hands-on activities, students explored the “why” behind language use, developing both their communication skills and cultural understanding. Thai cultural celebrations remained a vibrant part of school life, with highlights including a sustainability-focused Loy Krathong celebration where students crafted eco-friendly krathongs and reflected on environmental responsibility. Throughout the year, the Thai team also prioritized personalized support—meeting students at their level and nurturing growth through differentiated instruction and care.



■ MANDARIN

We were thrilled to launch the new Mandarin program for Grades 3–5 this year and even more excited by the overwhelmingly positive response from our community. With full enrollment in its first year and next year's classes already at capacity, the program is off to a strong start. Both native speakers and beginners found the lessons to be inspiring, challenging, and supportive, as they explored the Mandarin language and aspects of Chinese culture through engaging and challenging learning experiences. This enthusiastic beginning marks an exciting new chapter in our commitment to multilingual learning at KIS.



■ SCIENCE

Science in Primary this year was all about curiosity, discovery, and doing! With a strong focus on experimentation and the scientific process, students across all year levels explored big ideas through hands-on investigations and real-world connections. From making predictions to collecting data and drawing conclusions, learners engaged as true scientists by asking questions, testing ideas, and reflecting on their findings.

In EY Prep, for example, our youngest learners explored “seeds that pop,” delighting in the sensory experience and wonder of early experimentation. In Grade 2, the unit on light and sound lit up the classroom—literally—with a Neon Disco Party during their sleepover, where students applied their knowledge in a joyful, immersive environment. Grade 4 students took innovation to the next level during the Invention Convention, designing and presenting original creations to solve everyday problems. And in Grade 5, students conducted a wide range of experiments to support their independent inquiries for the PYP Exhibition, using the scientific method to investigate issues they care deeply about.

This year's approach empowered students not only to learn about science but to do science nurturing critical thinking, creativity, and a lifelong love of exploration.

SECONDARY SCHOOL



WELLBEING

This year, KIS launched a new Comprehensive Health Education course for students in Grades 6–10. These weekly lessons, led by our School Counselors, covered a wide range of essential topics including wellbeing, physical and mental health, human development, and sexuality—empowering students with knowledge and tools relevant to adolescent life.

In addition, our student-led Wellbeing Club met regularly to deepen understanding and promote school-wide initiatives that support social-emotional learning and student wellbeing. We also continued our emphasis on encouraging screen-free, socially engaging, and physically active free time during the school day, reinforcing the link between daily habits and student wellbeing.

Looking ahead, we are excited to build on this momentum with the continued development of our programs and the introduction of a new Social-Emotional Counselor for Grades 9–12, ensuring even greater support for our students as they grow.

MATHEMATICS

The extracurricular Math Club had an exceptional year, with over 250 student entries across six international math competitions, a new school record. Many students also achieved personal bests and school records in these events, showcasing both enthusiasm and excellence.

Academically, our Extended Mathematics course continued to grow in Grades 9–10, now serving as a pathway into the Higher Level (HL) Mathematics courses in the Diploma Programme (DP). Notably, over 30 students from the current Grade 10 cohort—our first to complete two full years of Extended Math—have opted to pursue HL Mathematics in the DP next year.

Throughout the year, students also engaged in an increasing number of inquiry-based projects, applying mathematical concepts to real-world contexts and deepening their understanding of how math functions beyond the classroom.



SCIENCE

Science education at KIS offered students a rich, hands-on experience this year, highlighted by a wide variety of lab investigations and field-based learning. Across Biology, Chemistry, Physics, and Environmental Systems and Societies (ESS), students engaged in dynamic experiments and science-related trips that brought their learning to life.

This year also marked our first-ever Brain Day, an interdisciplinary experience exploring the biology and psychology of the brain. In Grade 8, students participated in a new off-campus trip focused on river ecosystems and sustainability—linking classroom learning to environmental stewardship.

The Science Department also made significant strides in curriculum alignment, particularly through the implementation of consistent lab report templates across MYP year levels. This work will continue into the next academic year as we refine assessment practices and ensure coherence across courses.

ENGLISH

“O Romeo, Romeo, wherefore art thou, Romeo?”—This year, he was in our Grade 9 English classroom! The English Department focused on strengthening our curriculum through deeper engagement with literature and textual analysis, helping lay the foundation for student success in the DP.

Students in Grades 9 and 10 explored classic texts such as Romeo and Juliet, Macbeth, The Great Gatsby, and Of Mice and Men, alongside a diverse selection of modern texts. In alignment with the IB’s broad definition of “text,” students also analyzed films, songs, advertisements, and infographics, developing versatile literacy and critical thinking skills.

Next year, the team will turn its attention to enhancing the Grade 8 curriculum, continuing the trajectory of thoughtful, vertically-aligned curriculum development.





In parallel, non-Thai students across Grades 6–10 were able to participate in Thai Language and Culture classes tailored to foster cultural appreciation, conversational language skills, and a deeper understanding of the customs, festivals, and social norms that make Thailand unique. These lessons were often connected to real-life experiences—temple visits, cultural performances, and Thai cooking classes, which brought learning to life and supported students’ integration into Thai society.

Looking ahead, we are excited to further integrate cultural partnerships and service learning into our Thai programmes, offering all students even more ways to engage authentically with the vibrant local culture that surrounds us.



THAI CULTURE AND LANGUAGES

This year, our Thai Language and Culture program continued to provide meaningful opportunities for all students to connect with the language, literature, and rich traditions of Thailand. From Grade 6 through Grade 10, all Thai nationals and non-Thai nationals who reached proficiency engaged in Thai A: Language and Literature, a course designed to develop advanced proficiency in both literary analysis and expressive writing through the study of classic and contemporary Thai texts. This foundation prepares students for success in the IB Diploma Programme’s Thai Language and Literature course in Grades 11–12, where students deepen their understanding of literature through critical engagement with diverse genres and perspectives.

For Thai students who chose not to pursue the DP Thai Language and Literature course, we hold Non-Exam Purposes option in Grade 11–12. This pathway allows students to maintain their cultural and linguistic connection through project-based learning, community exploration, and applied language use, ensuring that all Thai students continue to grow in their national identity and communication skills throughout their secondary journey.



MYP PERSONAL PROJECT

This year, our Grade 10 students undertook an inspiring range of Personal Projects, culminating in a vibrant showcase of student passion, creativity, and independent learning. With over 60 unique projects on display, students explored topics as diverse as sustainable fashion, app development, Thai culinary heritage, sports psychology, and mental health advocacy. Each project was a deeply personal inquiry, driven by student interests and supported by strong ATL (Approaches to Learning) skills developed throughout the MYP.

A true highlight of the year was the Personal Project Exhibition, which transformed our Auditorium into a gallery of innovation and impact. The success of this event was elevated by the generous support of the Art Department, who worked alongside the Grade 10 team to curate a professional, visually stunning exhibition. Their guidance in layout, design, and display helped students present their work in compelling and creative ways, resulting in one of our most well-attended and positively received showcases to date.



Families, peers, and staff alike were inspired by the depth and breadth of student work on display. The exhibition not only celebrated the end of the MYP journey but also set a strong foundation for students as they transition into the Diploma Programme and take on new academic challenges.

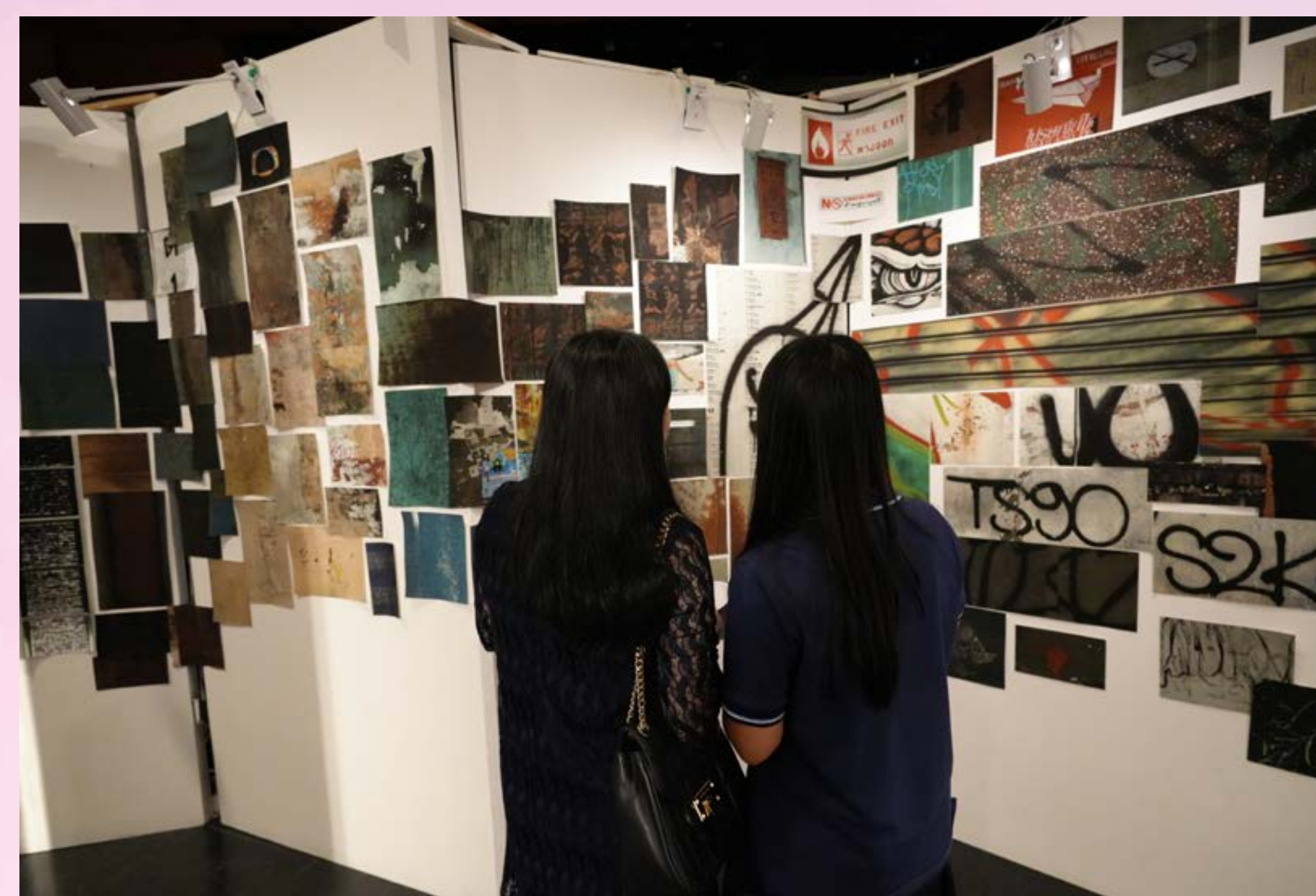
Looking forward, we are excited to continue building cross-departmental collaboration around this milestone event, ensuring that each year's cohort experiences the same sense of pride, purpose, and authentic audience for their learning.



IBDP VISUAL ART EXHIBITION

The Grade 12 DP Visual Art exhibition is always a highlight of our Arts calendar and this year was once again a wonderful showcase of our student's passion and artistic talents. The class of 2025 Eight students shared their art with our school community in our auditorium and were commended on their bravery and thoughtfulness when discussing their concepts and intentions. Their work was a testament to two years of dedication and hard work, as well as their problem solving and a profound engagement with the world around them.

The DP Visual Art exhibition had many guests - including inquisitive EY students who reflected on the art and curation, proud families and friends of our artists who shared in their success. Well done to our student artists and thank you for sharing your art



CLASS OF 2025, A YEAR OF GROWTH, GRIT, AND GREATNESS

This year, 53 of our students completed the IB Diploma Programme with impressive results. Our average score was 35 points, a full 5 points above the world average, with 14% scoring above 40 and 59% above 35, a testament to their determination and resilience.

We proudly celebrate Pawirin (Pai Pai) Sirivallop, our Valedictorian for 2025, who is now pursuing medicine at Mahidol University and Siriraj Hospital. A passionate scientist and compassionate leader, Pai Pai embodies the spirit of the IB learner, curious, caring, and committed to making a difference.

The IB Learner Profile Award went to Mario, whose inspiring journey saw him grow from a predicted 30 to an outstanding 39/45. All while leading the Athletics Council, organizing MRISA, representing KIS in volleyball and football, and sharing his love for music. His story is one of discipline, balance, and belief:

"The consistent grind to improve my grades while balancing leadership and sports was truly a defining chapter of my life."

Our Career-related Programme (CP) students also achieved a 100% pass rate, with Nano and Win leading the way.

Across the board, our students shone, particularly in Design Technology, Visual Arts, and more.



AUSTRALIA

Curtin University
Monash University
The University of Queensland
The University of Sydney
University of Melbourne

CANADA

Fraser International College
Humber College
Huron at Western University
Saint Mary's University (Halifax)
Southern Alberta Institute of Technology
The University of British Columbia
University of Toronto

HONG KONG

City University of Hong Kong
The Chinese University of Hong Kong
The Hong Kong Polytechnic University
The Hong Kong University of Science and Technology
The University of Hong Kong

FRANCE

ESCP Business School – Paris
NEOMA Business School
The American University of Paris

GERMANY

Lancaster University Leipzig

HUNGARY

Semmelweis University

INDIA

Maharashtra Institute of Technology

ITALY

Istituto Marangoni
The American University of Rome

NETHERLANDS

Amsterdam University College
Amsterdam University of Applied Sciences
Leiden University
University College Utrecht

NEW ZEALAND

The University of Auckland
Victoria University of Wellington

PORTUGAL

Forward College

SINGAPORE

ESSEC Asia Pacific

SPAIN

University of Navarra

SWITZERLAND

Franklin University Switzerland
Webster University Geneva

THAILAND

Assumption University of Thailand
Chulabhorn International College of Medicine
Chulalongkorn University
King Mongkut's Institute of Technology Ladkrabang
Mahidol University
Silpakorn University
Thammasat University

THE UNITED STATES

Adelphi University
American University
Augustana College
Beloit College
Binghamton University, State University of New York
Boston University
Butler University
California Baptist University
California Lutheran University
Christopher Newport University
Columbia College Chicago
Concordia College
Cottey College
Earlham College
Eastern Michigan University
Embry–Riddle Aeronautical University
Florida International University
Glenville State University
Hesston College
High Point University
Hobart and William Smith Colleges
Hofstra University
Hollins University
Houston Christian University
Illinois College
Juniata College
Kent State University
Lewis University
Louisiana State University – Baton Rouge
Lycoming College
Massachusetts College of Pharmacy and Health Sciences (MCPHS)
Missouri Southern State University
Nazareth University
Newman University
North Carolina State University At –Raleigh
Northeastern University
Northwest Missouri State University
Ohio Northern University
Ohio Wesleyan University
Pratt Institute
Purdue University Northwest
Queens College, City University of New –York
Quinnipiac University
Rhode Island School of Design
Rollins College
Rutgers University–New Brunswick
Santa Clara University
Savannah College of Art and Design
Seattle University
Snow College
Springfield College
St. Olaf College
State University of New York at Geneseo
State University of New York College of Environmental Science and Forestry –(ESF)
Syracuse University
The College of Wooster
The New School
University at Buffalo, The State University –of New York
University of California–Berkeley
University of California–Davis
University of California–Irvine
University of California–Riverside
University of California–San Diego
University of California–Santa Barbara
University of Connecticut
University of Dayton
University of Massachusetts–Amherst
University of Minnesota–Twin Cities
University of Missouri
University of Mount Union
University of Nevada, Reno
University of North Carolina At Charlotte
University of Saint Mary
University of South Dakota
University of Southern Mississippi
University of the Incarnate Word
University of Washington–Seattle –Campus
Wartburg College
Washburn University
Washington College
Wesleyan College
West Virginia University
Whittier College
Woodbury University
Xavier University (Cincinnati, Ohio)
York College of Pennsylvania

UNITED KINGDOM

Aberystwyth University
Anglia Ruskin University
Architectural Association School of Architecture
Aston University, Birmingham
Cardiff University
Durham University
Goldsmiths, University of London
Imperial College London
King's College London, University of –London
Kingston University
Lancaster University
Loughborough University
Northumbria University, Newcastle
Nottingham Trent University
Queen Mary University of London
The University of Edinburgh
UCL (University College London)
University of Bath
University of Birmingham
University of Bradford
University of Bristol
University of Derby
University of Essex
University of Exeter
University of Glasgow
University of Kent
University of Leeds
University of Leicester
University of Liverpool
University of Manchester
University of Nottingham
University of Reading
University of Sheffield
University of Southampton
University of St Andrews
University of Strathclyde
University of Surrey
University of Sussex
University of the Arts London
University of the West of England, Bristol
University of Warwick
University of Westminster, London

**Not just top universities.
The right ones!**



■ CP UPDATES

This year marked a proud milestone for KIS as we celebrated our first two graduates from the IB Career-related Programme (CP)—a pathway designed for students who are passionate about combining academic learning with real-world career interests.

One of our trailblazing graduates is heading to Milan to pursue her dream of studying fashion design, after completing her career-related studies with the Savannah College of Art and Design (SCAD). Her journey into the fashion world was sparked by a summer school placement at the end of Grade 11, where she immersed herself in design, textiles, and branding. That experience became the turning point, inspiring her to center her final CP studies around fashion and ultimately shaping her university pathway.

Our second graduate will be continuing his journey in music, having earned a place at the College of Music, Mahidol University—widely regarded as the most prestigious music school in Thailand. With a strong commitment to both performance and production, he has exemplified the CP's spirit of blending academic excellence with professional focus. His time in the programme allowed him to build a portfolio, deepen his technical skills, and refine his artistic identity.

Looking ahead, we are thrilled to welcome six new students into the CP Programme in August. These students will be exploring a diverse range of specialisms, including music, culinary arts, engineering, and more. Each student will pursue a personalized learning journey that aligns with their passions and career aspirations, supported by rigorous academics, workplace readiness, and real-world learning experiences.

The growth of the CP at KIS reflects our commitment to offering flexible, future-focused pathways that empower students to thrive in both university and industry. We are excited to continue expanding this innovative programme and celebrating the unique stories of our CP learners.

02

CREATING A CARING AND INCLUSIVE COMMUNITY

COUNSELLORS

This year has been one of growth and meaningful impact for the Counseling Department, as we expanded our services and deepened our commitment to supporting the social-emotional and academic needs of all students. We were thrilled to welcome two new counselors to the team, bringing fresh energy and expertise to both our secondary and primary divisions. With this expanded team, we successfully launched the PEEC (Positivity, Education Enhanced Curriculum) programme across the school—a comprehensive, age-appropriate curriculum that fosters essential social-emotional learning and promotes positive relationships in every classroom.



In Secondary, the Counseling team worked closely with students to support both personal wellbeing and academic planning. A major achievement was the development of a comprehensive College and Academic Planning Handbook, offering students and families a clear, structured guide through key academic milestones, subject choices, and post-secondary pathways. Our counselors also worked one-on-one with students throughout the university application process, helping them secure offers from personal top-choice universities around the world, including in the US, UK, Europe, Canada, and Asia.

To further support student wellbeing, we introduced the MARIO Framework, a student-driven model that emphasizes reflection, goal setting, and one-on-one mentoring. This initiative has empowered students to take greater ownership of their personal growth, academic goals, and emotional health. Looking ahead, we're excited to grow the program even further with the addition of a dedicated College Counselor and an Early Years (EY) Counselor next academic year. These roles will allow us to provide more tailored, developmentally appropriate support from the earliest years through graduation—ensuring every student is known, supported, and prepared for the next stage in their journey.

STUDENT SERVICES

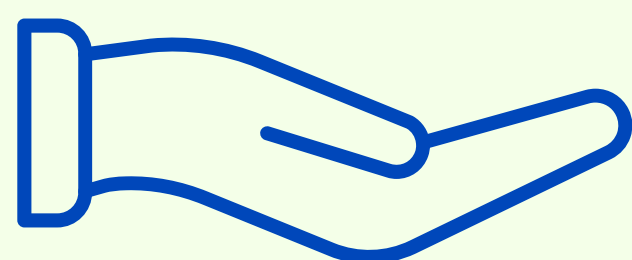
At KIS, we continue to grow and evolve our Student Services team to ensure that every student receives the support they need to thrive, academically, socially, emotionally, and physically. This year, we took important steps forward in building a more inclusive and responsive learning environment, reflecting our KIS values of Caring and Inclusive, and taking action ethically.

In response to the growing needs of our student body, our services have expanded to include Occupational Therapy (OT), Physical Therapy (PT), Speech and Language Therapy, and targeted Dyslexia support. These services are designed to work in close collaboration with teachers, families, and external specialists, offering students a coordinated and compassionate support network.

“ Every child's learning journey is unique, and so is every family's ”
— Dr. Bret Dieterle



Learning Support



22

students in G6-8

23

students in G9-12



FAMILY INSPIRATION CENTER

One Place. One Team. One Step at a Time

This year also saw the launch of KISpire, our holistic support hub designed to better serve both students and their families. KISpire brings together all elements of student support—academic interventions, therapies, and gifted and talented programming—into a single, integrated model that complements the educational experience. It will offer a welcoming space where entire families can access guidance and support, reinforcing our belief that student success is most powerful when schools and families work in partnership.

This year also marked a shift in welcoming and planning for students with more prominent physical and developmental needs, as we continue to foster a community where inclusion is not just a value, but a practice. Our team has worked diligently to create learning pathways and campus accessibility solutions that empower all learners to participate fully in school life.

Looking ahead, we are committed to deepening our capacity through professional development, community partnerships, and a shared belief that diverse learners make our school stronger.



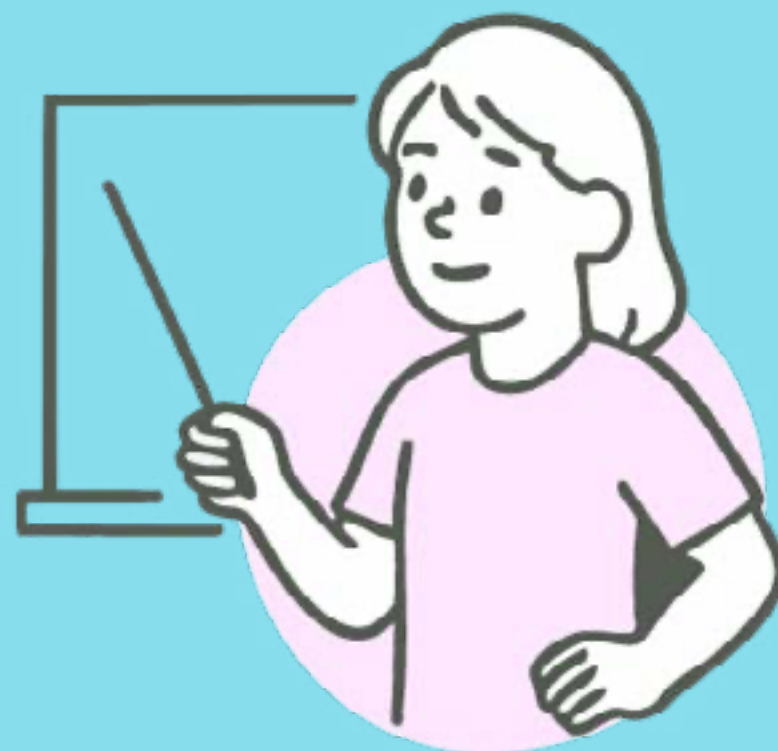
Occupational Therapist



Psychologist



Physiotherapist



Teacher





KISPA, our vibrant KIS Parent Association, continues to be the heart of our school community—bringing families together, building friendships, and creating a welcoming environment where everyone feels at home. This year, KISPA organized an impressive range of family-friendly events and initiatives, reflecting the diversity, generosity, and creativity of our parent community. From the Family Day Out to the Mangroves and our Family Service Day, to fun-filled activities like badminton mornings, mandala painting workshops, and wellness yoga and golf sessions, KISPA created spaces for parents and children alike to connect, relax, and contribute meaningfully to the school experience.

They were also instrumental in welcoming new families to the KIS community, playing a key role during student and family orientation events at the start of the year. Whether it was a friendly smile, a helping hand, or sharing valuable parent-to-parent insights, KISPA helped ensure that every family felt supported from day one.

Throughout the year, their presence was felt across the school—at the Community Fair booth, in the ever-reliable Uniform Shop, and during important community initiatives such as the Blood Drive, which gave families an opportunity to support the wider Bangkok community. KISPA also maintained a strong network of classroom representatives and LINE groups, helping families stay informed, connected, and engaged in school life.

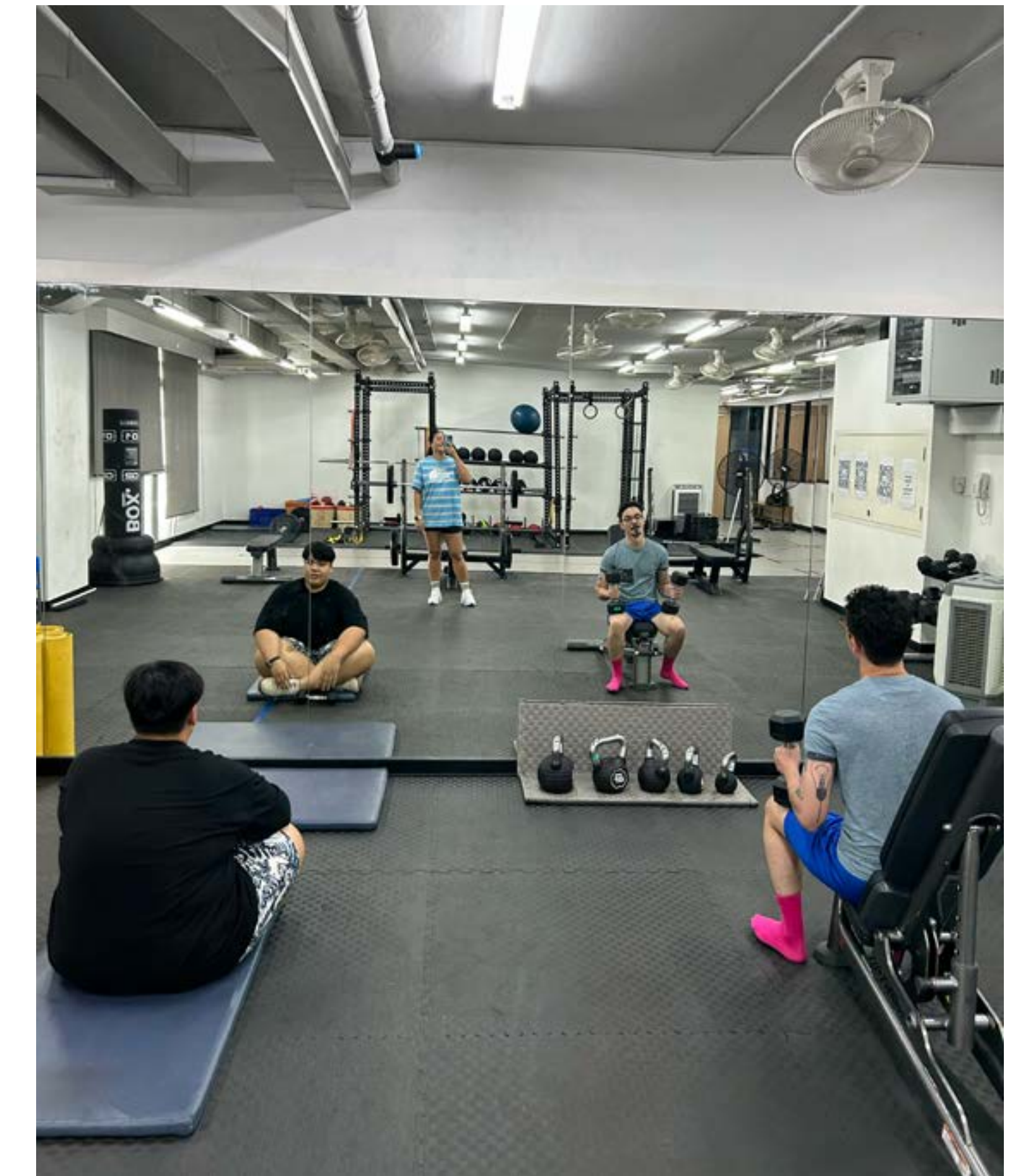
KISPA's dedication and enthusiasm reflect the very best of what a school-parent partnership can look like. We are deeply grateful for their tireless contributions, and we look forward to seeing how this wonderful community will continue to grow and enrich the KIS experience for all.



COMMUNITY SPORTS & EVENTS

KIS proudly continued its commitment to building community through sport:

- Weekly Community Programs such as Community Swim, Basketball, Football, Badminton, and Fitness invited participation from parents, staff, alumni, and students—strengthening ties and promoting wellness across generations.
- Record participation in girl's sports with no team cancellations reflects a growing culture of inclusivity and opportunity.
- Our focus on culture, participation, and success led to over 20 top-3 finishes across AISAA and MRISA leagues, reinforcing school spirit and pride.



COMMUNITY PARTNERSHIPS

A Stronger Vendor Network

Our Community Fair and Farmers’ Market continue to thrive, thanks to an expanding network of passionate vendors offering delicious food, sustainable produce, creative crafts, and wellness services. From local organic growers to talented artisans and top healthcare providers, including leading hospitals and AIS, our campus events are stronger, healthier, and more vibrant than ever.



Golf Team Sponsorship with Breaking Par

In partnership with Breaking Par, the official distributor of top golf brands in Thailand, we were thrilled to secure G/FORE apparel sponsorships for some of our most dedicated KIS Wolves golfers. This collaboration elevates not just performance, but pride on and off the course.



A Musical Milestone with Steinway & Sons

KIS students took center stage at the prestigious Steinway & Sons recital series, marking our debut in this celebrated program. Over 15 pianists from across grade levels shared their talents in an unforgettable evening of music and community spirit. It was a proud moment for students, parents, and the KIS arts program alike.



03

TAKING ACTION ETHICALLY

DIVERSITY AND INCLUSION



This academic year, inclusion stood as a central school-wide goal, shaping our learning culture, professional development, and community practices. Our commitment to ensuring that every student belongs, is supported, and can thrive has been foundational to our work. A key part of this journey was the launch of KISpire—a way to support inclusion and to bring together comprehensive student support and tutoring under one umbrella.

Students enrolled at KIS will continue to receive the support they're entitled to, but for cases requiring more specialized or intensive assistance, KISpire will provide an extensive range of additional services. Alongside this, faculty engaged in sustained professional learning on MTSS (Multi-Tiered Systems of Support) and UDL (Universal Design for Learning)—frameworks that enable educators to design flexible learning environments and deliver targeted support for all learners.

These learning systems are not one-off trainings, but long-term commitments to inclusive practice that will continue to evolve next year. Further extending our impact, the DEIB (Diversity, Equity, Inclusion, and Belonging) Committee presented at this year's EARCOS Leadership Conference, highlighting our collective efforts to build a more equitable and understanding school environment. Together, these initiatives reflect our shared belief that inclusion is not a project—it is a mindset and mission that lives in every classroom, conversation, and connection across our community.

ENGAGED STUDENT LED CLUBS

Student leadership and service were at the heart of this school year, with a wide range of student-led clubs making meaningful contributions both on campus and in the wider community. From environmental action to humanitarian aid, our students demonstrated initiative, empathy, and a strong sense of responsibility.

A final event of the year was the Sustainability Expo, held during the final week of school. Organized by our student Environmental Club, the event showcased student-led solutions and creative projects related to climate action, waste reduction, and sustainable living. The expo engaged students, staff, and families in conversations about everyday choices and global impact, reinforcing our commitment to environmental education.

At the end of March, when the earthquake struck Myanmar, students quickly mobilized to offer support. A group of passionate young leaders launched an art auction and fundraising campaign, featuring original student artwork. The initiative raised funds to support earthquake relief efforts, reflecting how creativity and compassion can go hand in hand in times of crisis.



The Student Council (StuCo) also led meaningful outreach efforts throughout the year. One key initiative was the collaboration with the Setsathian School for the Deaf, building connections through shared activities and inclusive experiences. StuCo also played a central role in organizing a successful Operation Smile fundraising campaign, helping fund life-changing surgeries for children born with cleft conditions.

In partnership with Bangkok Community Help, a group of Secondary students facilitated a monthly swimming activity for children from under-resourced communities. This ongoing project not only promoted water safety and confidence, but also built friendships and a sense of joy through shared experiences.

From local partnerships to global support, this year's student-led clubs exemplified our school values in action. We are proud of their leadership, compassion, and commitment to creating a better world.

KIS CARES

Over the past year, KIS has brought the pillars of KIS Cares to life through a wide range of purposeful initiatives that reflect our core values: Striving for Understanding, Nurturing Passion in Self and Others, Taking Action Ethically, and Creating a Caring and Inclusive Community. Educational outreach has flourished through inquiry-led learning and student-centered experiences across all grade levels. Highlights such as the EY3 assembly preparations, Grade 2 storytelling, and the Grade 5–6 transition projects have provided rich opportunities for students to express their thinking and develop confidence. The launch of KISpire and the upcoming Early Career Teacher program reinforce our belief in supporting both student and staff growth, ensuring a strong foundation of mentorship and care.



Students also demonstrated ethical action through sustainability-focused events such as the PYP Book Swap, the PYP Market, and the environmental audit led by the Eco-Schools Committee. These initiatives not only supported environmental stewardship but also nurtured empathy, generosity, and responsibility. Our celebration of the arts and culture has been equally powerful, with the all-school production of Shrek The Musical Jr. showcasing the creativity and collaboration of over 120 students, and visual arts exhibitions like “Mapping Change” giving voice to student perspectives. Events such as the Songkran celebration, House Art Challenge, and cultural performances have helped build a stronger sense of identity and community.

Well-being has remained a priority, with physical and mental health promoted through activities like House Splash events, the G2 sleepover, and health education in secondary school. Students also raised funds and awareness to support victims of the Myanmar earthquake, modeling compassion and community engagement. Through these efforts, KIS has continued to build a culture where learning is meaningful, passions are encouraged, actions are principled, and every member of the community is valued and supported.





SUSTAINABILITY

Over the past year, sustainability has been a key focus at KIS, embedded not only in curriculum but in student-led action and school-wide initiatives that reflect our core values—particularly Taking Action Ethically and Creating a Caring and Inclusive Community. One of the most significant developments has been the launch of the Eco-Schools Committee, composed of students, staff, and community members, who began with an environmental audit of energy use and waste management. This foundational work sets the stage for long-term improvements in how we manage our resources and care for the planet.

Our students have also taken the lead in sustainability through multiple meaningful projects. The PYP Book Swap, organized by the student Library Leadership Team, promoted circular thinking by encouraging students to exchange pre-loved books—combining environmental awareness with literacy. Meanwhile, the PYP Market, coordinated by the Student Council, emphasized empathy and responsible consumerism while raising funds for community causes. The PYP Exhibition (PYPx) featured several groups whose final actions addressed sustainability concerns. Some advocated for more garbage bins around campus to reduce littering, while others launched awareness campaigns on air pollution and practical ways to reduce energy use, like carpooling and turning off unused electronics.

From curriculum design to community outreach, these efforts have helped KIS cultivate a culture of sustainability where students are not just learning about environmental challenges—they are empowered to respond with thoughtful, ethical action. These everyday choices and school-wide programs affirm our belief that even small steps, when taken collectively, can create meaningful change.

EARTHQUAKE



On March 28, the KIS community was deeply impacted by news of the earthquake affecting regions of Myanmar and Thailand. In true alignment with our core values—especially Creating a Caring and Inclusive Community and Taking Action Ethically—our response was immediate, compassionate, and collective. Staff, students, and families came together to support those affected, including members of our own community who were directly impacted.

The initial response was grounded in emotional care and community solidarity. Classrooms paused to acknowledge the event, and students participated in projects reflecting on safety and empathy. One powerful initiative invited students to reflect on the question, “Where do you feel safe?”, with their insights displayed in the Primary Atrium to promote dialogue and emotional connection.

At the same time, meaningful action took shape. The Primary Student Council organized a fundraising campaign in collaboration with the Bangkok Community Help Foundation. Posters with QR codes were placed throughout campus, enabling families to contribute directly to relief efforts. As little as 200 baht could feed a family of four for three and a half days—an impactful reminder to students that even small contributions can make a real difference.

This unified and values-driven response showcased the strength of our community and its commitment to empathy, action, and global citizenship. In the face of the crisis, KIS responded not with fear, but with generosity, care, and purposeful support.

SERVICE AS ACTION / CAS

Student leadership shone brightly across the Primary School this year, with learners stepping up in many meaningful ways to contribute to our community. The Student Council led a variety of impactful initiatives, from fundraising for children in need of cochlear implants to supporting earthquake relief efforts—demonstrating compassion, responsibility, and the power of collective action.

House Captains brought spirit and joy to the school through a year filled with fun and inclusive events like secret handshakes, obstacle courses, and the ever-popular Tug of War, helping to strengthen bonds across houses and grade levels.

Our Library Leadership Team inspired a love of reading through creative book displays, recommendations, and organizing a successful book swap, while our Primary Student Ambassadors warmly welcomed new students and helped them feel at home.

Beyond these formal roles, countless other students led by example every day by showing empathy, care, and what it means to take action ethically through their words and actions. These young leaders remind us that everyone has the power to make a positive difference in our communities.



D4

**NURTURING PASSION
IN SELF AND OTHERS**

ARTS & DESIGN

PYP CHARITY CONCERT CENTRAL THAILAND MISSION

In December, the Grade 4 students hosted a vibrant charity concert. The event brought together over 400 students in a powerful display of community spirit and musical talent, all in support of the Central Thailand Mission. Guided by the mission's values of "Care, Connect, and Change," the students sang with purpose to raise both awareness and funds for those facing hardship due to poverty, disability, or abandonment. Through their performances, the students not only entertained but also inspired generosity, successfully raising thousands of Baht to support the mission's outreach programs. This concert stands as a shining example of the compassion and initiative that define our school community.



SHREK The Musical JR.

SHREK THE MUSICAL JR.

After months of anticipation and dedicated preparation, this year's production of Shrek took the KIS stage by storm, and what a phenomenal show it was! With a cast and crew of 128 students ranging from Early Years to Secondary, the production transported audiences from a swampy bog to the kingdom of Far Far Away with charm, humor, and stunning performances. From the roar of the dragon to the lovable antics of ogres and fairy tale creatures, the show was a true celebration of student talent and teamwork. Our vibrant community of directors, choreographers, set and costume designers, and tech crew worked tirelessly behind the scenes to bring the magic to life.





■ JASON AND THE ARGONAUTS

This January, Secondary students took to the stage with a dynamic and original production of Jason and the Argonauts, marking a creative milestone in our school's performing arts calendar. Uniquely, the script was written in-house, giving students the opportunity to engage deeply with the story and contribute to a tailored interpretation of the classic Greek myth.

The performance combined strong student acting with thoughtful staging, impressive props, and striking lighting design, creating an immersive atmosphere that supported the mythological themes of adventure, challenge, and heroism. From Jason's quest for the Golden Fleece to encounters with legendary creatures, the production delivered a cohesive and visually compelling experience.

Behind the scenes, students worked closely with staff in directing, costume and prop design, and technical production. The result was a well-executed show that reflected the commitment, creativity, and teamwork of everyone involved. Jason and the Argonauts demonstrated how original storytelling and collaborative effort can come together to produce meaningful and memorable work.



All gods of Greece are cruel in time all men shall learn to do without them.

PYP ART EXHIBITION

The PYP Art Exhibition was a vibrant celebration of creativity, imagination, and student voice. We are incredibly proud of our young artists, whose works showcased not only their developing skills but also their unique perspectives and expressive talents. The exhibition featured a wide range of media – from weaving and pottery to painting, drawing, textiles, and sewing – demonstrating the depth and diversity of artistic exploration across the PYP. The encouragement and enthusiasm of our supportive community made the event all the more special, nurturing a deep appreciation for the arts within our school.



SPORTS

PRIMARY SPORTS

Our Primary athletes showed great enthusiasm and sportsmanship across all key sports:

Volleyball: Participation levels rose, with students gaining valuable experience in training and competition, and building team cohesion throughout the year.

Basketball: Teams competed in AISAA tournaments with standout performances. Girls in G5U brought home gold in both league and tournament, while boys finished strong in 4th place. Younger teams also showed promise, building foundations for the future.

Football: G3U Girls took gold, and both G5U boys and girls brought home silver and bronze respectively—showcasing both skill and determination on the field.





Swimming: Our Primary Swim Team had a standout year, breaking over 20 individual school records and three relay records. Swimmers achieved PBs in 75% of their events and shone in meets such as ISB SwimFest and KIS Primary Friendly.

SECONDARY SPORTS

Secondary sports saw a significant boost in participation and performance: Basketball: From MRISA to AISAA tournaments, our boys and girls brought home multiple medals. Highlights include AISAA JV Boys winning gold, and JV Girls taking bronze. G7 and G5 teams also earned double golds in their divisions.

Volleyball: A milestone year for KIS volleyball with both boys' and girls' Senior MRISA teams reaching the finals—a first in KIS history. Both teams earned silver, showcasing strength and unity.



Football: Our footballers delivered a strong season. AISAA Varsity and JV Boys both secured gold, while girls teams worked hard and showed steady growth. Primary and Middle School levels also brought home a mix of gold, silver, and bronze.

Golf: Golf continued its upward trajectory. With steady progress in ISGT events and access to the new KIS Golf Centre, students are better positioned than ever. Our partnership with the Harper brothers has energized the program, setting a strong path forward.

Swim Team: Secondary swimmers broke records, set personal bests, and delivered strong performances in ANS, ISB SwimFest, and other regional meets.

This year’s sports program reflected the essence of what athletics can bring to a school community—growth, camaraderie, and celebration of effort. We look forward to building on this momentum next year with even more participation and broader opportunities for all.



ECAS

This year saw another exciting and action-packed year for Extra-Curricular Activities at KIS, with a total of 222 ECAs offered across three seasons (76 in Season 1, 73 in Season 2, and 73 in Season 3). These opportunities empowered students from Early Years through Secondary to pursue passions, build new skills, and form strong community connections beyond the classroom.

Early Years & Primary Highlights

In the Early Years, some of the most popular ECAs included ALS Cooking, where students created delicious dishes and earned certificates and recipe books to take home, and Junior STEM Toys Maker, which introduced basic physics and science concepts through hands-on projects. A standout new addition was the Balance Cruiser, run by School of Miller, which challenged students to step out of their comfort zones by mastering balance and coordination on four-wheel boards.

In Primary, favourites like Taekwondo, Ninja/Parkour, Happy Hooper Basketball, and KIS Reading Wolves continued to attract enthusiastic participation. New ECAs such as Minecraft Education, Lightsaber Combat, Sky Pilot Robotics, and the Fashion Academy added even more variety to the program. Meanwhile, our Shrek the Musical JR. production brought together students from multiple ECAs—cast, crew, choir, and dancers—for an unforgettable showcase of talent and collaboration.



Secondary Expansion

The Secondary ECA programme continued to grow with over 20 student-led clubs and the introduction of new offerings such as Character Design, Art Toy, OneWheel (E-Skate), and Concert Band & Ensemble Performer. A major highlight was the inaugural KIS Chess Championship, organized by the Secondary Chess Club in collaboration with Red Knight Chess Academy. Held on June 1, 2025, the event welcomed students from KIS and other schools, marking a significant moment in our growing inter-school ECA landscape.

Sport Academies & Beyond

Our Sport Academies also experienced a banner year, with over 150 participants engaged in year-round training outside of regular school team competitions. These academies—distinct from AISS and MRISA teams—provided student-athletes with consistent development opportunities, although we did observe a slight shift in participation away from other ECAs due to their growing popularity.

Looking Ahead to 2025/26

As we plan for the upcoming year, we're excited to introduce even more off-campus programs to adapt to campus renovations. New activities will include horseback riding, dryland skiing and ski trips, cross-country running, and gymnastics both on and off campus. We also look forward to launching our Secondary Minecraft Esports Program, expanding Wee Sports for our youngest learners, and growing partnerships with KIS Reignwood Park (KISRP) to further enrich our student offerings.

Whether building lightsabers, performing in a musical, racing cross-country, or leading a club, students this year have truly embodied the KIS spirit of exploration, creativity, and growth through our ECA program.

inspiring individuals