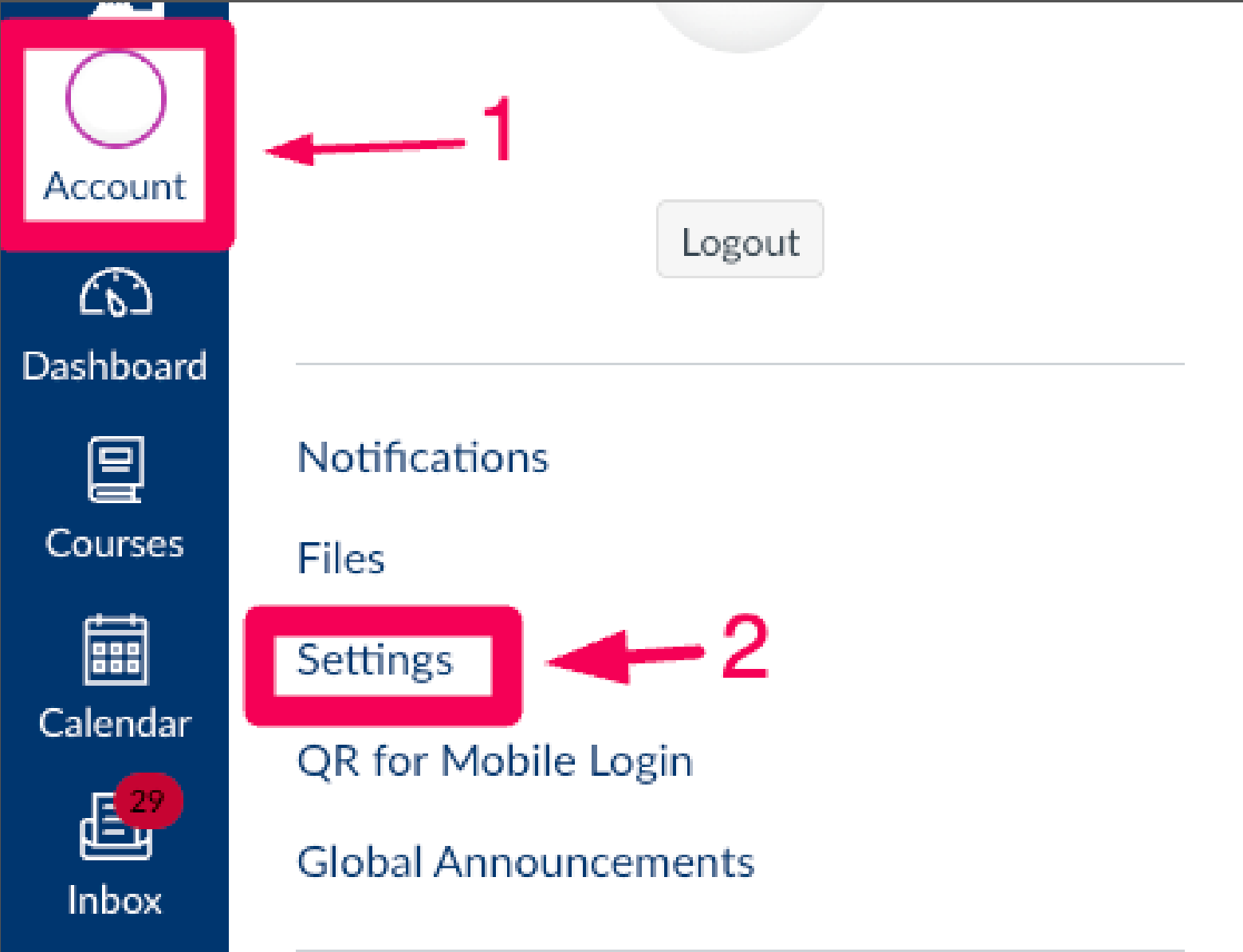


CHARTER ONE

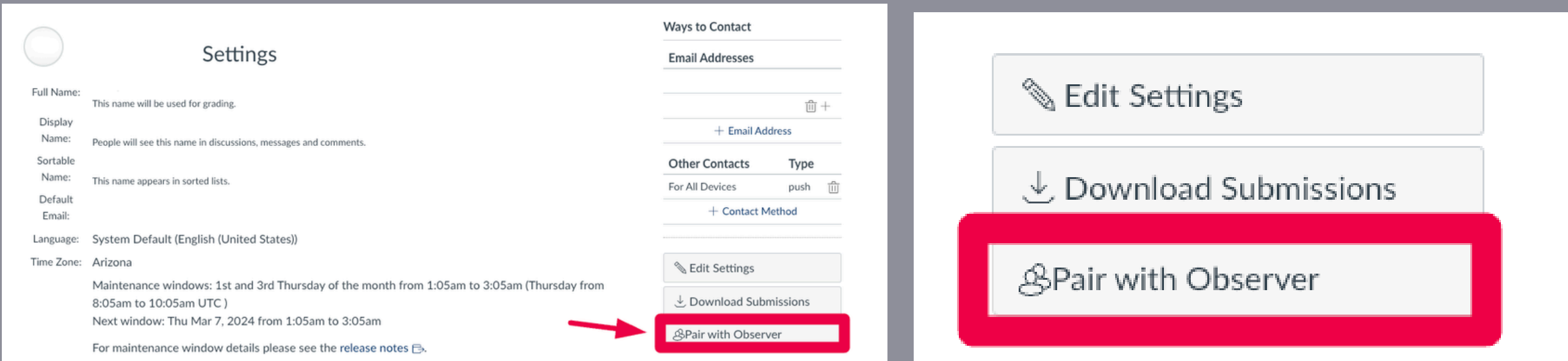
Canvas Parent/Guardian Pairing

This guide will help you easily create a Canvas account to observe your child’s online learning.

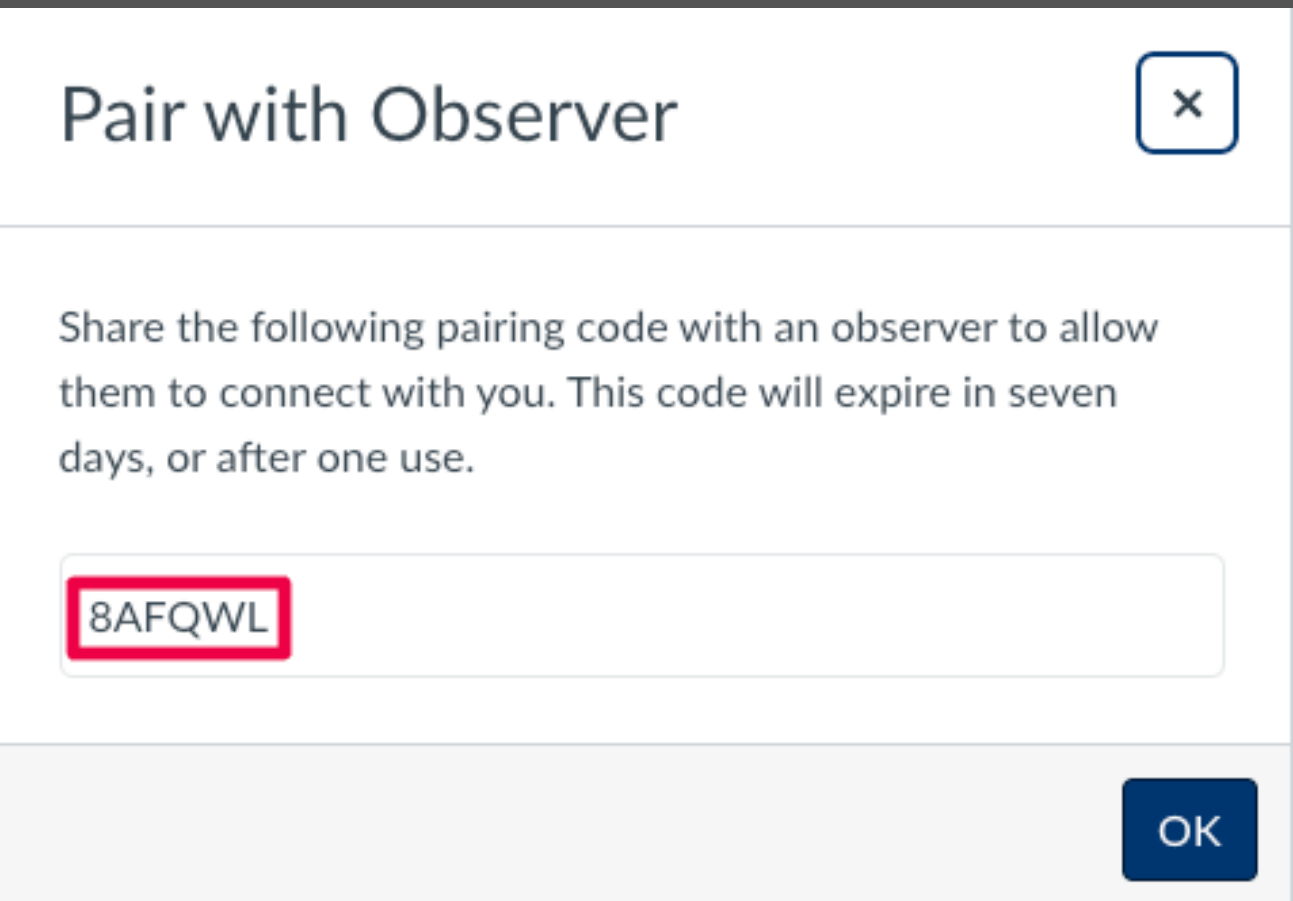
1 In your child’s Canvas account, access **Account Settings**.



2 Click **Pair with Observer**.



3 After clicking **Pair with Observer**, copy the displayed pairing code.





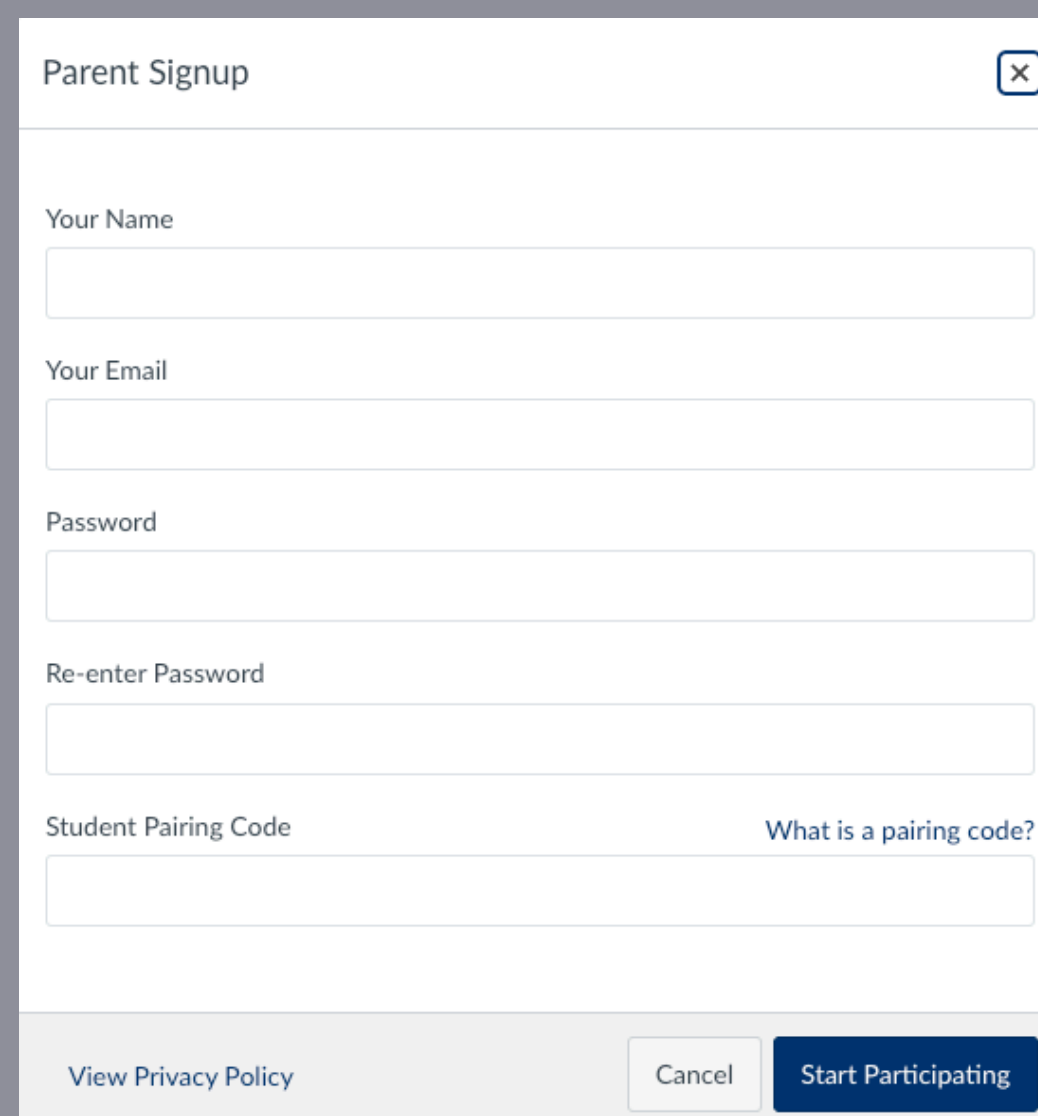
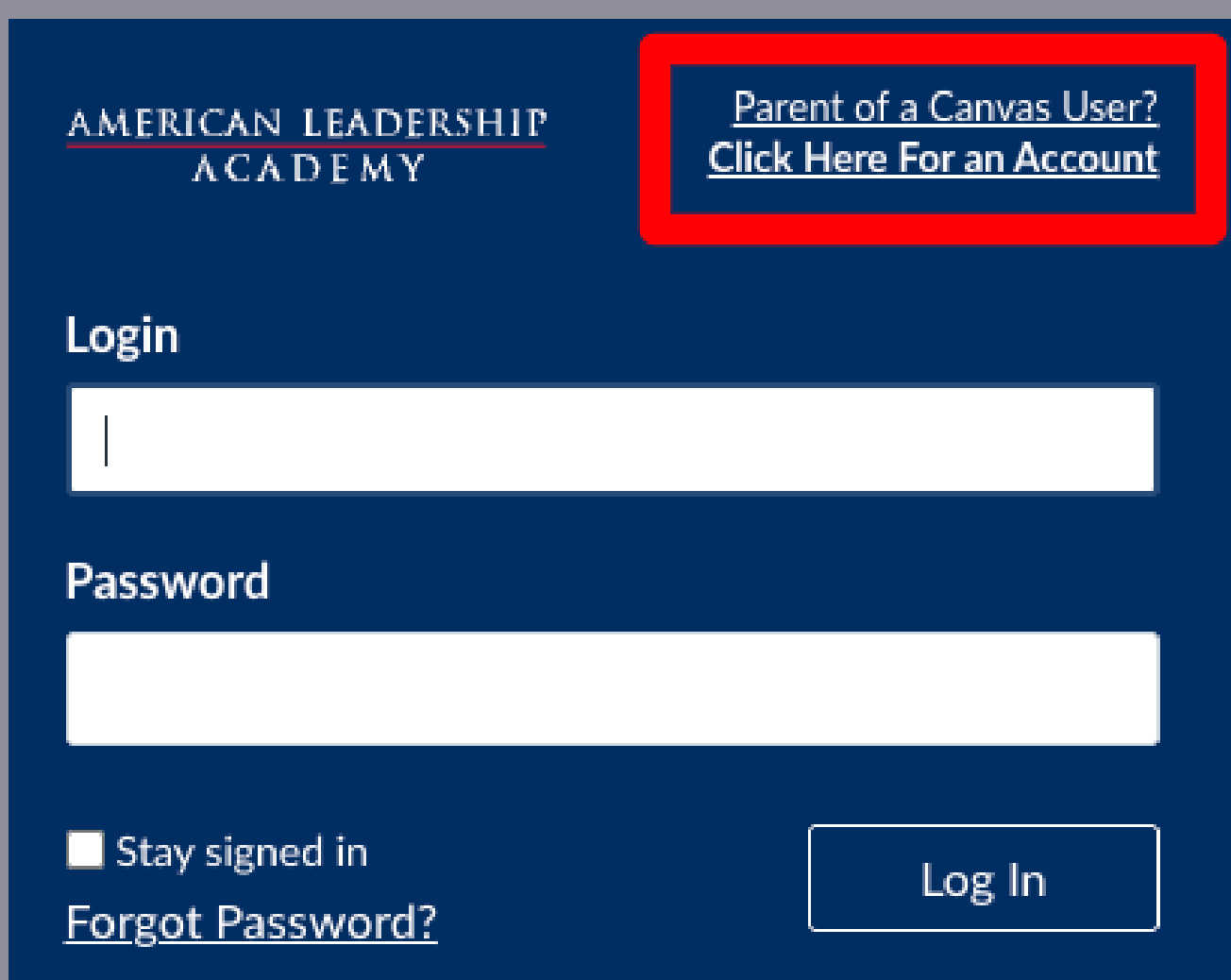
CHARTER ONE

Canvas Parent/Guardian Pairing

4 Access the following link:

 <https://alaschools.instructure.com/login/canvas>

5 On this page, create a new parent account.



6 Once your account is created, you can view each of your child's courses.

To log in to your account in the future, use the link listed in Step 4.

