

Lamar Middle School

Campus Profile

SCHOOL HOURS 8:55 a.m. to 4:10 p.m. **GRADES** 6th through 8th grade
ONLINE lisd.net/lamar | facebook.com/lamarmiddleschool | x.com/LamarMS

STUDENT INFORMATION

716 Students
96.1% Average daily attendance

STAFF INFORMATION

63.9 Total staff members
11.2 Average number of years teaching experience
8.1 Average number of years teaching in LISD schools

PROFESSIONAL LEARNING

Total number of hours the staff spent developing their job skills last year

4882

66

Average professional learning hours per Lewisville ISD staff member



OBSERVATION

Number of administrator visits to observe class instruction

207

69 Average number of classroom visits per administrator

Our commitment to students:

At Lamar Middle School, our focus is on educating students to become independent learners in a safe and nurturing environment. We challenge students to embrace a growth mindset by providing an appropriate rigor in our course work.

Our extra-curricular programs provide students with opportunities to be successful and learn the values of hard work, sportsmanship and teamwork. Our clubs and organizations provide students many opportunities to find a group they can belong to and find value in.

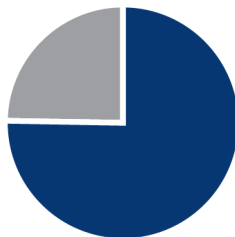
We are committed to providing our students opportunities to engage in real-world learning through field trips, hands-on experiences and through bringing community members into our school to provide rigorous and relevant learning experiences.

At Lamar Middle School, we are preparing leaders, shaping the future and impacting the world.

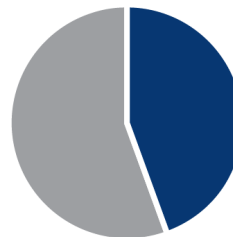
ACADEMIC PERFORMANCE

PSAT SCORES AND ADVANCED COURSES

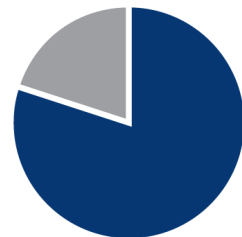
- = Percent of students whose PSAT test scores indicate they are college and career ready.
- = Percent of student population who are enrolled in at least one advanced course.



PSAT Reading **75.4%**



PSAT Math **44.5%**



Honors/AP enrolled **80%**

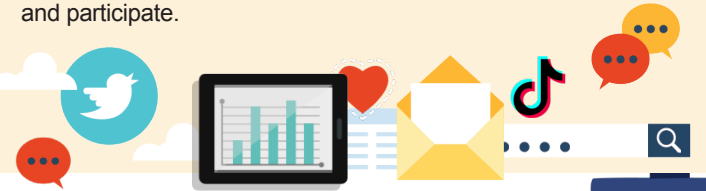
CLUBS

Clubs provide opportunities for students to engage in learning of their choice beyond the classroom.

Some of our clubs include Student Council, Chess Club, Circle of Friends, and FCA.

DIGITAL CITIZENSHIP

Earning the Common Sense School badge is a symbol of our school's dedication and commitment to helping students think critically and use technology responsibly to learn, create, and participate.



PROGRAMS

Our campus offers unique programs to help our students become better learners, leaders, and friends.

Some of our programs include AVID, No Place for Hate, and LMS Mentor Program.



ARTS AND ATHLETICS



99%
Participation in athletics or physical education

90%
Participation in fine arts such as music and art

AWARDS AND RECOGNITIONS

- UIL One-Act Play Zone Champion
- No Place for Hate Campus
- CREST Award for Counseling Excellence
- Superior Ratings at Fine Arts contests

Survey said...



What our parents think

In April 2025, parents were surveyed about the campus their child attends. Values represent the percentage of respondents who agreed with each statement. Based on 204 responses.

Are satisfied overall	93%
Most of the time, my child is happy at school	92%
My child's health and wellness are supported	94%
Parents feel welcomed at school and are involved	96%
School staff communicates well with families	91%
Teachers do whatever it takes to help my child meet academic standards	87%

What our students think

In April 2025, we asked our students about adults they could confide in at our school. Values represent the percentage of students who agreed with the following.

There is a staff member at my school with whom I feel comfortable talking	87%
---------------------------------------------------------------------------	-----



LAMAR MIDDLE SCHOOL
Home of the Longhorns
Flower Mound, Texas
Kristy Casal, Principal

