

Killian Middle School

Campus Profile

SCHOOL HOURS 8:55 a.m. to 4:10 p.m. **GRADES** 6th through 8th grade
ONLINE lisd.net/killian | facebook.com/killianms | x.com/killian_ms

STUDENT INFORMATION

997 Students
 96.5% Average daily attendance

STAFF INFORMATION

80 Total staff members
 9.6 Average number of years teaching experience
 6.3 Average number of years teaching in LISD schools

PROFESSIONAL LEARNING

Total number of hours the staff spent developing their job skills last year

4964

56.4

Average professional learning hours per Lewisville ISD staff member



OBSERVATION

Number of administrator visits to observe class instruction

326

82 Average number of classroom visits per administrator

At Killian Middle School, we believe:

- All students have unique strengths and talents that are nurtured
- All students are provided engaging and innovative learning experiences every day
- All students are provided opportunities to take risks and develop a growth mindset

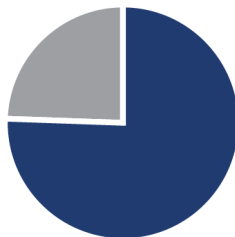
Killian Middle School is committed to providing all students with a forward-thinking education giving them the opportunity to empower, inspire, create and innovate during their middle school years.

All students engage in learning experiences that connect them to both global and local communities through project-based learning opportunities, Science, Technology, Engineering, Art and Math activities that are real-world experiences. Students at Killian are nurtured, and the well-being of the whole child is a priority for all staff. Students are provided opportunities to take risks, and growth mindsets are enhanced throughout the learning journey of each student. We believe what begins at Killian will change the world, and our students are prepared for that challenge.

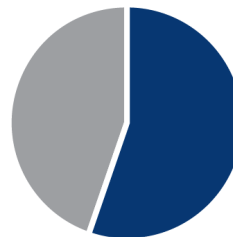
ACADEMIC PERFORMANCE

PSAT SCORES AND ADVANCED COURSES

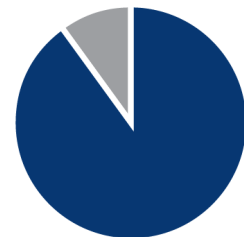
- = Percent of students whose PSAT test scores indicate they are college and career ready.
- = Percent of student population who are enrolled in at least one advanced course.



PSAT Reading **75.7%**



PSAT Math **55.3%**



Honors/AP enrolled **90%**

CLUBS

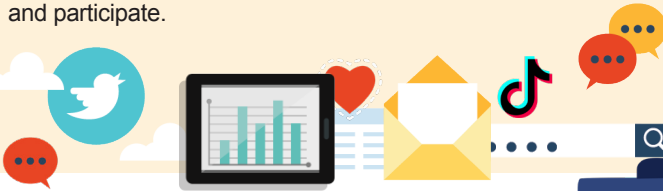
Clubs provide opportunities for students to engage in learning of their choice beyond the classroom.

Some of our clubs include NJHS, Student Council, Kindness Club, FCA, and Step Club.

DIGITAL CITIZENSHIP



Earning the Common Sense School badge is a symbol of our school's dedication and commitment to helping students think critically and use technology responsibly to learn, create, and participate.



PROGRAMS

Our campus offers unique programs to help our students grow. Some of our programs include Dual Language, Gifted and Talented, SPED, ESL, Circle of Friends, and Peer Buddy PE.



ARTS AND ATHLETICS



99%
Participation in athletics or physical education

84%
Participation in fine arts such as music and art

AWARDS AND RECOGNITIONS

- East Zone Middle School Academic UIL 1st Place
- Counseling Department earned Crest Award
- Boys Basketball: 8th Grade D2 District Champions, 8th Grade D1 District Runner Up
- Girls Track: 7th Grade District Champions, 8th Grade District Runner Up

Survey said...



What our parents think

In April 2025, parents were surveyed about the campus their child attends. Values represent the percentage of respondents who agreed with each statement. Based on 216 responses.

Are satisfied overall	94%
Most of the time, my child is happy at school	96%
My child's health and wellness are supported	97%
Parents feel welcomed at school and are involved	98%
School staff communicates well with families	94%
Teachers do whatever it takes to help my child meet academic standards	84%

What our students think

In April 2025, we asked our students about adults they could confide in at our school. Values represent the percentage of students who agreed with the following.

There is a staff member at my school with whom I feel comfortable talking	85%
---	-----



KILLIAN MIDDLE SCHOOL

Home of the Mustangs
Lewisville, Texas

Amy Sanford, Principal

