

# Timber Creek Elementary School

## Campus Profile

**SCHOOL HOURS** 7:45 a.m. to 3 p.m. **GRADES** Pre-K through 5th grade  
**ONLINE** [lisd.net/timbercreek](http://lisd.net/timbercreek) | [facebook.com/timbercreekes](https://facebook.com/timbercreekes) | [x.com/TimbercreekES](https://x.com/TimbercreekES)

### STUDENT INFORMATION

**410** Students  
**95.9%** Average daily attendance

### STAFF INFORMATION

**49.6** Total staff members  
**12.1** Average number of years teaching experience  
**9.1** Average number of years teaching in LISD schools

### PROFESSIONAL LEARNING

Total number of hours the staff spent developing their job skills last year

**3692**

**64.8**

Average professional learning hours per Lewisville ISD staff member



### OBSERVATION

Number of administrator visits to observe class instruction

**218**

**109** Average number of classroom visits per administrator

## At Timber Creek Elementary, we are one family!

At Timber Creek Elementary, we are ONE family, and we believe that EVERY child can be a leader!

As a Leader in Me School, we are committed to our campus mission: To engage and inspire our learners as leaders!

We strive to help every student discover and develop his/her individual strengths and talents. We encourage goal setting at an early age and celebrate progress along the way throughout each child's educational journey.

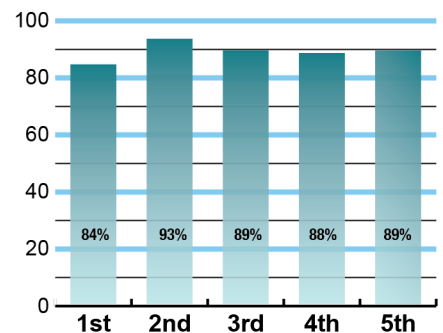
We cultivate a balance of tradition and innovation that ensures our learners are actively engaged in meaningful and relevant work that prepares them for success in their future.

At Timber Creek, "We build leaders today to change tomorrow!"

## ACADEMIC PERFORMANCE

### Istation by grade level

Lewisville ISD monitors students' reading progress through the Istation computer program. Teachers can quickly assess which students need help. This chart shows the percent of students reading on grade level or showing six months growth at the end of the school year.

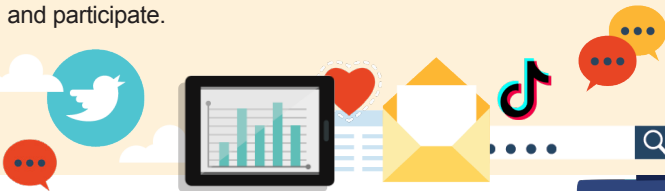


## CLUBS

At Timber Creek, students engage in learning and leadership opportunities beyond the classroom. Here are some of the opportunities we offer: Student Lighthouse Team, Student Council, Morning Mile, Safety Patrol, Flag Patrol, Tiger Choir, and Kindness Ambassadors.

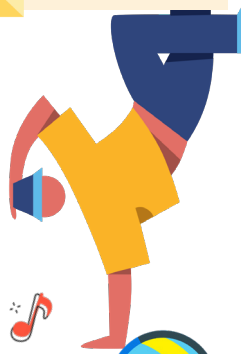
## DIGITAL CITIZENSHIP

Earning the Common Sense School badge is a symbol of our school's dedication and commitment to helping students think critically and use technology responsibly to learn, create, and participate.



## PROGRAMS

Our school community enjoys the benefits of many programs such as Leader in Me, Restorative Practice, Safe & Civil Schools, Grade Level Performances, Tiger News Network, Student Recognition Assemblies, PEP Rallies, Book Clubs, Watch D.O.G.S., Moms on a Mission, Tutoring and WIN times, and Staff and Student Talent Shows.



## ARTS AND ATHLETICS

**100%**  
Participation in athletics or physical education

**100%**  
Participation in fine arts such as music and art



## AWARDS AND RECOGNITIONS

- Leader in Me Lighthouse School
- Leader in Me School Tour Site for 2023 Symposium
- CREST Award
- Common Sense Media School
- National PTA School of Excellence
- PTA Golden Apple Award
- PTA Snappy Increase Award
- PTA Presidents Challenge Award
- PTA Generations Involvement Award
- PTA Student Involvement Award
- PTA MARS Award
- PTA Gold Voice for Every Child Award

## Survey said...



### What our parents think

In April 2025, parents were surveyed about the campus their child attends. Values represent the percentage of respondents who agreed with each statement. Based on 80 responses.

Are satisfied overall	<b>95%</b>
Most of the time, my child is happy at school	<b>95%</b>
My child's health and wellness are supported	<b>96%</b>
Parents feel welcomed at school and are involved	<b>96%</b>
School staff communicates well with families	<b>96%</b>
Teachers do whatever it takes to help my child meet academic standards	<b>95%</b>

### What our students think

In April 2025, we asked 4th and 5th grade students about adults they could confide in at our school. Values represent the percentage of students who agreed with the following.

There is a staff member at my school with whom I feel comfortable talking	<b>90%</b>
---------------------------------------------------------------------------	------------



## TIMBER CREEK ELEMENTARY SCHOOL

Home of the Tigers  
Flower Mound, Texas

*Amy Middleton, Principal*

