



Forestwood Middle School

STEM Campus Profile

SCHOOL HOURS ONLINE

8:55 a.m. to 4:10 p.m. **GRADES** 6th through 8th grade

lisd.net/forestwood | facebook.com/forestwoodms | x.com/ForestwoodMS

STUDENT INFORMATION

894	Students
96.2%	Average daily attendance

STAFF INFORMATION

79	Total staff members
13.5	Average number of years teaching experience
9.0	Average number of years teaching in LISD schools

PROFESSIONAL LEARNING

Total number of hours the staff spent developing their job skills last year

5984



68

Average professional learning hours per Lewisville ISD staff member



OBSERVATION

Number of administrator visits to observe class instruction

520

130 Average number of classroom visits per administrator

What we believe

At Forestwood Middle School, we are proud of our school where students show pride through loyalty, behavior and scholarship. Forestwood is not only a place to be, but a place to thrive. We challenge each student to strive to reach his or her personal best. At Forestwood, we believe:

- Education is a collaborative effort involving the entire community
- Teaching with passion promotes learning with passion
- All students can learn; all students can achieve
- We all have basic needs: love and belonging, freedom of choice, safety, power and fun
- Students are active participants in their own education today leading to their future

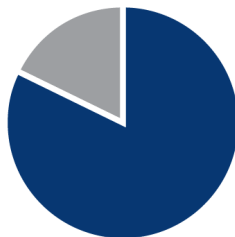
At Forestwood, our vision is a learning community that challenges all members to reach their individual potential and prepares them to realize their unique role in a caring community.



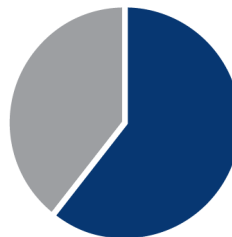
ACADEMIC PERFORMANCE

PSAT SCORES AND ADVANCED COURSES

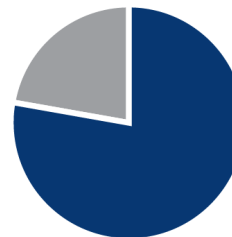
- = Percent of students whose PSAT test scores indicate they are college and career ready.
- = Percent of student population who are enrolled in at least one advanced course.



PSAT Reading **82.3%**



PSAT Math **60.8%**



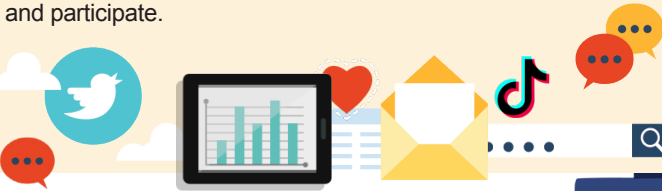
Honors/AP enrolled **78%**

CLUBS

Clubs provide opportunities for students to engage in learning of their choice beyond the classroom. Some of ours include Book Club, Science Olympiad, Calligraphy Club, Math Club, Student Council, National Junior Honor Society, Robotics Club, Music Appreciation Club, Chess Club, Circle of Friends, Crochet Club, and Gardening Club.

DIGITAL CITIZENSHIP

Earning the Common Sense School badge is a symbol of our school's dedication and commitment to helping students think critically and use technology responsibly to learn, create, and participate.



PROGRAMS

Our campus offers unique programs to help our students become better learners, leaders, and friends.

Some of our programs include Advanced Spanish and LISD STEM Academy.



ARTS AND ATHLETICS



99%
Participation in athletics or physical education

81%
Participation in fine arts such as music and art

AWARDS AND RECOGNITIONS

- PTA National School of Excellence 2022-2024
- Orchestra UIL Sweepstakes Award
- Band UIL Sweepstakes Award
- Choir UIL Sweepstakes Award
- 8th Grade Girls Basketball Division 1 & 2 District Champions
- Division 2 7th and 8th Grade Volleyball Champions
- CREST Counseling Award

Survey said...



What our parents think

In April 2025, parents were surveyed about the campus their child attends. Values represent the percentage of respondents who agreed with each statement. Based on 271 responses.

Are satisfied overall	97%
Most of the time, my child is happy at school	94%
My child's health and wellness are supported	95%
Parents feel welcomed at school and are involved	97%
School staff communicates well with families	94%
Teachers do whatever it takes to help my child meet academic standards	91%

What our students think

In April 2025, we asked our students about adults they could confide in at our school. Values represent the percentage of students who agreed with the following.

There is a staff member at my school with whom I feel comfortable talking	87%
---	-----



FORESTWOOD MIDDLE SCHOOL

Home of the Falcons
Flower Mound, Texas

Jennifer Hawes, Principal

