



STOUGHTON AREA SCHOOL DISTRICT EXECUTIVE SUMMARY

PROVIDED BY FINDORFF

City of Stoughton, Wisconsin

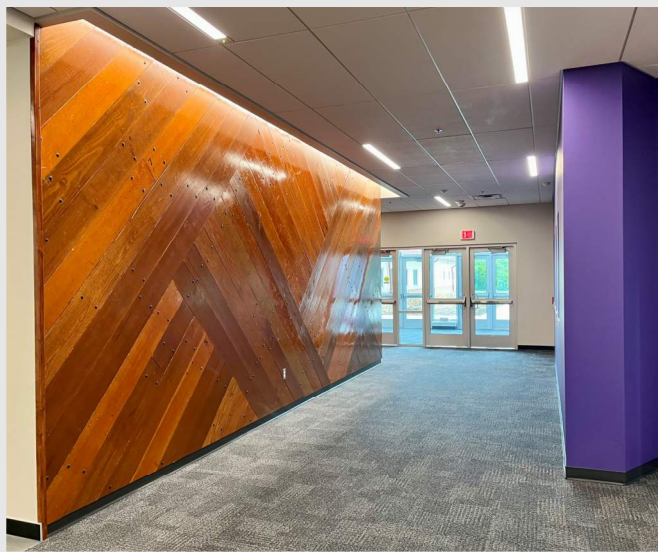
8/8/25

Welcome Back to River Bluff Middle School!

We are excited to share that the River Bluff Middle School addition passed all final inspections earlier this week and received a certificate of occupancy from the City of Stoughton! This 22,000 square-foot addition to the existing school consists of a beautiful gym with seating capacity to fit the school's entire student body, plus staff. The addition also includes two large multipurpose rooms for fitness training and athletics, multiple restrooms, and lots of storage for gym equipment. This project also featured a complete transformation of the River Bluff Campus by removing two existing buildings to create space for the new parking lot and student drop-off/pick-up lanes. We are looking forward to welcoming students and staff into their new space this fall!



Top Right: a view of the new entrance to the River Bluff Middle School featuring the recently installed landscaping



Bottom left: a look at the wood feature wall in the River Bluff addition constructed with bleacher board from the old Armory Building



Bottom Right: a photo highlighting the new River Bluff gym as part of the addition, check out all that natural light!

DID YOU KNOW?

Before the Armory Building was demolished on the River Bluff Campus last spring, the bleacher boards from the building's gymnasium were salvaged. These boards have since been utilized to create the wood feature wall in the River Bluff addition (pictured above). Each board still bears its original stain, distressed characteristics, and even painted numbers that indicated the row of seating.

Questions?

Senior Project Manager, Matt Claggett / 608.729.2155 / mclaggett@findorff.com





STOUGHTON AREA SCHOOL DISTRICT EXECUTIVE SUMMARY

PROVIDED BY FINDORFF

City of Stoughton, Wisconsin 8/8/25

High School

Significant progress continues to be made across the High School in the final weeks before students return to class! In the pool, tile installation on the pool deck is nearly complete. Finishing touches such as covers for the trench drains and painting in the spectator area, are also near completion.

In the Fab Lab, painting is complete, and installation of the new casework and countertops will soon begin. The Fab Lab will also receive a custom wall covering that mirrors the Fab Lab class decal/logo to tie the space together. In the art rooms, finishing touches are being applied to the polished concrete floors. Fiber-reinforced wall panels (FRP) are being installed in the ceramics classroom to help reduce cleaning efforts in the future.

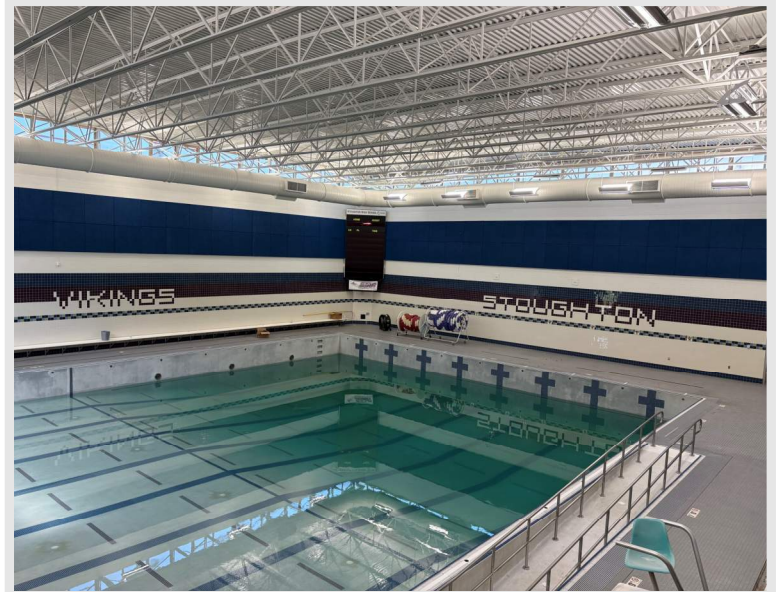
Fox Prairie Elementary

With two weeks to go at Fox Prairie Elementary, many of the interior finishes are complete! Install of the LVT flooring in the corridors and carpet in private offices is underway. Installation of the new exterior FRP doors and aluminum frames also began this week. The epoxy flooring in the kitchen is complete. Next week, the new metal lockers will be set, and new classroom furniture will be delivered.

The message center and back-lit letters have been installed at the recently constructed monument sign, now ready to welcome students and staff back to school in a couple short weeks!

Sandhill Elementary

The renovations at Sandhill Elementary are also coming to a close! Over the past few weeks, the replacement of the exterior guardrail and the addition of the new roof hatch and access ladder have both been completed. Finishing touches are underway on the single classroom remodel, and nearly all the cabinet unit heaters (CUHs) have been replaced. Next week, the remaining drinking fountains and new automatic door operators will be installed.



Above: a view of the amazing progress in the Stoughton High School pool as tile install on the pool deck is nearly complete



Above: a photo of the corridor finishes at Fox Prairie Elementary following installation of the new LVT flooring

Questions?

Senior Project Manager, Matt Claggett / 608.729.2155 / mclaggett@findorff.com

