



WELCOME NEW SBCOE STAFF!



ELIZABETH ALVAREZ SCHOOL SOCIAL WORKER

Ms. Alvarez joins our team as part of the Mental Health Student Services Act Grant, where she will provide mental health support focused on students in the Hollister School District.

MICHELLE DAMM SPECIAL EDUCATION PRESCHOOL TEACHER

Ms. Damm will provide instruction and case management to preschool students ages 3-5 at SBCOE's Early Child Special Education Center.



ROSA DE LA CRUZ PROGRAM SPECIALIST, MATH

Ms. De La Cruz is part of the Educational Services Team, where she will coach math to teachers across the county as part of the San Benito County Math Initiative (SBCMI) 2.0.



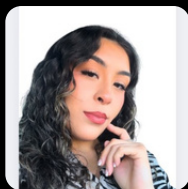
MICHELLE FAZON TEACHER, VISUALLY IMPAIRED

Ms. Fazon serves on the Special Education Itinerant Team where she is responsible for providing services to students with visual impairments at the Early Childhood Special Education Center and in school across San Benito County.



JACQUELINE FELIX SPED INSTRUCTIONAL ASSISTANT

Ms. Felix serves as part of the SBCOE Early Childhood Special Education Preschool team, supporting instruction for preschool students ages 3-5.



BIANCA FERNANDEZ HUMAN RESOURCES ANALYST

Ms. Fernandez joins the Human Resources team, where is responsible for benefits, employee attendance, onboarding and other HR functions.





**KAREN GARCIA
TEACHER OF THE ORTHOPEDICALLY
IMPAIRED**

Ms. Garcia is a member of the Special Education Itinerant Team where she provides orthopedic services to students with IEPs enrolled in the SBCOE Early Childhood Special Education Program and schools across the county.

**DENISE HERNANDEZ
SPED INSTRUCTIONAL ASSISTANT**

Ms. Hernandez serves as part of the SBCOE Early Childhood Special Education Preschool team, supporting instruction for preschool students ages 3-5.



**MARIA YARENIA LEON
DIRECTOR, CURRICULUM &
INSTRUCTION AND EQUITY & ACCESS**

Ms. Leon joins the Educational Services Team, providing guidance, technical assistance and support related to curriculum and instruction to SBCOE programs and districts in the county.

**SALVACION OLINARES
TEACHER, DEAF & HARD OF HEARING**

Ms. Olinares joins the Special Education Itinerant team where she will provide deaf and hard of hearing services to students enrolled in the SBCOE Early Childhood Special Education Program and to students across the county.



**MAI OPENA-CRUZ
ASSISTANT SUPERINTENDENT,
EDUCATIONAL SERVICES**

Ms. Opena-Cruz joins the Educational Services Team, leading instructional services support for the county, including LCAP development and approval, continuous improvement, and professional development.

**KAYLA RAMIREZ
SPED INSTRUCTIONAL ASSISTANT**

Ms. Ramirez serves as part of the SBCOE Early Childhood Special Education Preschool team, supporting instruction for preschool students ages 3-5.



**MICHELLE ROMO
DIRECTOR, BEHAVIORAL SUPPORTS &
INTERVENTION**

Ms. Romo will oversee services to support students behaviorally at the SBCOE Alternative Education Programs and the SBCOE Early Childhood Special Education Program. She will also provide technical assistance and training for schools across the county.

HAILEY STRUCKMEYER
ALTERNATIVE EDUCATION TEACHER

Ms. Struckmeyer joins SBCOE's Alternative Education team as a teacher at the Youth Services Center and the Independent Study teacher for Pinnacles Community, San Andreas Continuation, Santa Ana Opportunity students.



SHARMILA VELMURUGAN
DATA SYSTEMS SPECIALIST

Ms. Velmurugan joins the SELPA and Technology teams, where she provides support related to data systems including Aeries, CALPADS, SIRUS, and state reporting for SBCOE programs and districts across the county.

**Thank you for your dedication to
our students and families across
San Benito County as we**

Engage,

Encourage,

Empower...

Educate!

