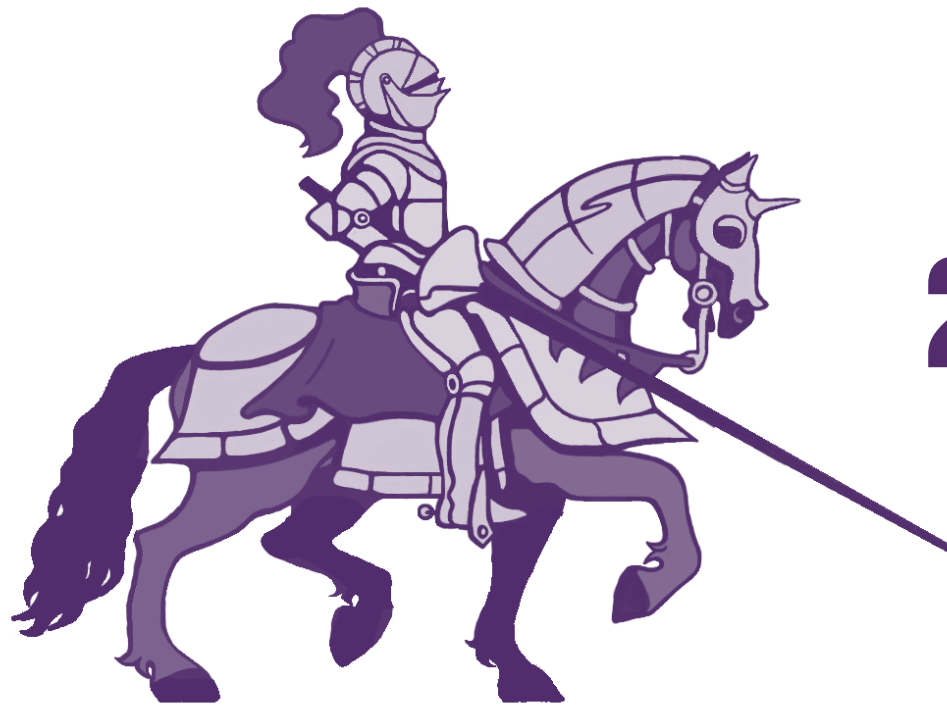


# *Holland Patent*

CENTRAL SCHOOL DISTRICT

2025



2026

COMMITTED TO EXCELLENCE





# AUGUST 2025

*Holland Patent Central School District*

SUNDAY	MONDAY	TUESDAY	WEDNESDAY	THURSDAY	FRIDAY	SATURDAY
					1	2
3	4	5	6	7	8	9
10	11 <small>Board of Education Regular Meeting, 5:30 p.m., Annex Conference Room</small>	12	13	14	15	16
17	18 <small>JV and Varsity Fall Sports Start</small>	19	20	21	22	23
24	25 <small>Modified Fall Sports Start</small>	26 <small>6th Grade Orientation, 5:30 p.m.</small>	27	28	29	30
31						

# HOLLAND PATENT CENTRAL SCHOOL DISTRICT

## DESCRIPTION OF DISTRICT

The Holland Patent Central School District, with an enrollment of approximately 1,300 students, serves all or portions of the Townships of:

TRENTON | STEUBEN | FLOYD | RUSSIA | DEERFIELD | MARCY | REMSEN | WESTERN

The students of the District are served by two elementary school buildings. Holland Patent Elementary serves grades 3-5 and is located in Holland Patent. General William Floyd Elementary serves grades pre-K-2 and is located in Stittville.

The middle school, serving grades 6, 7, and 8, is located in Holland Patent, and the high school, serving grades 9-12, is located just outside the Village of Holland Patent.

The school district is organized under the control of the Board of Education, whose offices are located in the Annex. Their Chief Executive Officer is known as the Superintendent of the District. Their office, as well as the other administrative offices, are located in the Annex.

## BOARD OF EDUCATION MEETINGS

These meetings are open to the public and you are encouraged to attend. Please refer to the calendar for those specific dates. You are invited to call the district office if you have a particular topic which you feel should be brought to the attention of the Board of Education.

## ANNUAL DISTRICT MEETING - BUDGET HEARING

The annual district meeting is normally held on the first Tuesday in May in the high school building. The election of members to the Board of Education, the vote on the budget and voting on other properly introduced propositions shall take place two weeks later. Polls are open from 10:00 a.m. until 8:00 p.m.

## PARENT-TEACHER ORGANIZATIONS

At the present time, these are carried on at the elementary level only. They usually meet at specific times as listed on the school calendar. School curriculum and programs are usually the main topics and this is an opportunity for parents to become better acquainted with their child's school and faculty. Please consider getting involved.

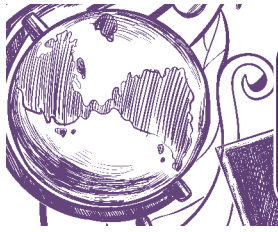
## TRANSPORTATION

The responsibility for administering the transportation program in this District shall rest with the school administration and they shall adhere to all applicable laws and regulations of the Commissioner of Education, Motor Vehicle Bureau and Public Service Commission.

The school will provide transportation for lesser distances if an unusual situation exists, which in the judgment of the Board of Education creates unusual hardship upon the child. Such cases will be considered as isolated cases and decisions rendered on the basis of particular circumstances.

Parents planning to send their children to parochial school or private school are hereby notified that they must file their request for transportation with the Superintendent of Schools, prior to April 1, in accordance with current state law. This, of course, enables the District to plan for and budget the money necessary to provide such transportation.





# SEPTEMBER 2025

Holland Patent Central School District



SUNDAY	MONDAY	TUESDAY	WEDNESDAY	THURSDAY	FRIDAY	SATURDAY
	1  <b>Labor Day</b>	2 <b>Superintendent's Conference Day</b> MS Open House Grades 7 & 8, 5-6:30 p.m. Freshmen Orientation, 5:30 p.m. HS Open House, 6:15 p.m.	3  <b>Superintendent's Conference Day</b>  GWF Information Night	4   First Day of School for Students	5   HS In-Class Orientation	6
7  <b>Grandparents Day</b>	8	9   HPE Information Night	10   Board of Education Regular Meeting, 6:30 p.m., Annex Conference Room	11   <b>Patriot Day</b>	12	13
14	15	16	17   Beginning Band & Orchestra Parent Meeting, 6:30 p.m., HS Aud	18	19	20
21	22  HPE Picture Day  <b>First Day of Fall</b>  Rosh Hashanah Begins	23	24   <b>Rosh Hashanah Ends</b>	25	26	27
28	29	30   Look at Me I'm Three, 5:30 p.m., GWF Cafeteria				

# TRANSPORTATION INFORMATION

As school transportation continues to be rated by the National Highway Safety Administration as one of the safest forms of transportation in the United States (eight times safer than the automobile), we encourage everyone to take the safer way to school by riding the school bus.

The opportunity to ride a bus is available to all students eligible for bus transportation, but is accompanied by a responsibility to make each trip as safe as possible.

In order to maintain a high level of safety while efficiently transporting students, our drivers must have the cooperation of both the students and parents. If the rules listed are followed, the driver can concentrate on their primary job - **safe driving**.

**For further information and answers to your concerns, please contact the transportation department by calling 315-865-4103.**

## BUS RULES

1. *The bus driver is in charge. Respect your bus driver and fellow students.*
2. *Go directly to your seat and remain there while the bus is in motion. It is appropriate for three to sit in each seat being careful not to block the aisle. Keep body parts inside the bus.*
3. *No fighting, tripping, shoving, use of profanity, loud talking, horseplay, or behavior which might divert the driver's attention is permitted.*
4. *No bullying on the school bus.*
5. *Keep the bus clean and care for bus equipment. Emergency doors and windows as well as other bus equipment are to be used only when appropriate.*
6. *Hold backpacks, book bags and instrument cases while on the bus. Do not leave them in the front of the bus or in the aisle.*
7. *Food and beverages are not to be consumed on the bus.*
8. *Glass containers are strictly prohibited.*
9. *You may not use or possess tobacco, alcohol, or illegal drugs.*
10. *Use of cell phones or pagers on the bus is prohibited. These products will be dealt with according to school district policy.*
11. *The District will follow BOE Policy #5016 regarding transportation request.*

**Note: Videotaping is conducted on the buses, at our discretion, to ensure the safety of our students.**

# NATIONAL SCHOOL LUNCH PROGRAM (NSLP)

The National School Lunch Program (NSLP) is a federally-assisted meal program operating in public and nonprofit private schools and residential child care institutions. It provides nutritionally balanced, low-cost or no-cost lunches to children each school day. The program was established under the Richard B. Russell National School Lunch Act, signed into law by President Harry Truman in 1946.

The School Breakfast Program (SBP) is a federally assisted meal program operating in public and nonprofit private schools and residential child care institutions. It began as a pilot project in 1966, and was made permanent in 1975. The School Breakfast Program is administered at the Federal level by the Food and Nutrition Service. At the State level, the program is usually administered by State education agencies, which operate the program through agreements with local school food authorities in more than 89,000 schools and institutions.

We are pleased to announce that all students enrolled at Holland Patent Schools will be able to receive a FREE breakfast and lunch meal at all Holland Patent schools on school days during the 2025-26 school year regardless of income status.

This implementation is a result of the United States Department of Agriculture (USDA) expanding access to the federal Community Eligibility Provision (CEP). CEP allows eligible schools participating in the National School Lunch and School Breakfast Programs to offer school meals at no charge to all students.

**Since income data is used as a proxy for many education and other purposes in New York State, it is vital that you still complete a household income form. One will be provided at the beginning of the school year. Collection of this data is important to the District.**

Holland Patent CSD utilizes NutriKids Point of Sale (POS). This is a computerized system that tracks all sales and deposits. All students are issued a PIN number and will continue with the same number throughout their enrollment. Students will enter their number at the register and their account will be displayed to the cashier.

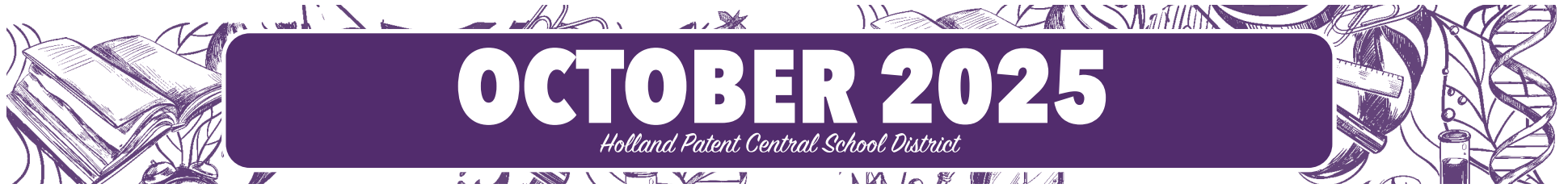
It is important that students continue to fund their accounts because only the first breakfast and lunch meals each school day are offered at no cost. Doubles, snacks and other a la carte items must still be paid for. This can be done at [www.myschoolbucks.com](http://www.myschoolbucks.com). This website will allow you to make payments, set up low balance alerts, view transactions and much more.

Charging of snacks and other a la carte items will not be allowed. Balances that are \$10.00 or more in debt will receive automated phone calls weekly until the balance is brought current.

**PLEASE FILL OUT A FREE AND REDUCED MEAL APPLICATION.  
THIS MUST BE DONE ANNUALLY.**

*\*Filling out this form helps our school become eligible for grant opportunities.*

**If you have any questions, please contact Cliff Casab at  
315-865-7242 or [ccasab@hpschools.org](mailto:ccasab@hpschools.org).**



# OCTOBER 2025

*Holland Patent Central School District*

SUNDAY	MONDAY	TUESDAY	WEDNESDAY	THURSDAY	FRIDAY	SATURDAY
			1  Yom Kippur Begins	2  GWF Picture Day Yom Kippur Ends	3  5-Week Interim	4
5	6  Sukkot Begins	7  MS Picture Day	8  PSAT/SAT School Day, 8 a.m. Board of Education Regular Meeting, 6:30 p.m., MS Library	9  Tri-M Music Honor Society Induction, 6:30 p.m., HS Aud. Grades 3-5 Cross Country Meet	10  Superintendent's Conference Day	11
FIRE PREVENTION WEEK - 10/6-10/9					NO SCHOOL	
12	13  Columbus Day Sukkot Ends NO SCHOOL	14	15	16  National Honor Society Induction Ceremony, 7 p.m.	17	18
19	20  Diwali	21	22  ASVAB, 8 a.m., HS	23	24  HS Picture Day	25
26	27	28  Look at Me I'm Three, 5:30 p.m., GWF Cafeteria	29	30	31  Halloween	

# OVERVIEW OF DISTRICT STUDENT CODE OF CONDUCT

## ATTENDANCE

Regular attendance at school is necessary for two reasons: first, parents of children of compulsory school age may be prosecuted by law if their child is not in regular attendance for causes other than legal. Second, and more important to the student, the value of your education can be seriously threatened by frequent loss of class time.

Students are expected to attend school on a regular and consistent basis. The insistence on good attendance serves as a clear and constant reminder of the strong correlation between attendance and student achievement. Under New York State Education Law Section 3205, parents are responsible for the regular attendance of their children for instruction. All absences from school must be noted as part of a student's record. Absences from school fall into two broad categories: excused and unexcused. Unexcused absences fall into two general categories: unlawful detention and truancy. Examples and explanations of each can be found in student/parent handbooks distributed annually during the opening of school each September.

The Holland Patent Central School District will monitor student attendance on a regular and consistent basis. Instances of extensive absence will initiate a review under the auspices of the building principal. This review will trigger appropriate interventions such as parent contact, counseling of students, disciplinary action, or referral to community services.

## DRESS CODE

Students' appearances should be neat and clean. Dress and appearance which causes disruption of the educational process or present health or safety problems shall not be permitted. Otherwise, dress and appearance are the responsibility of the parent.

## SMOKING

Smoking/vaping will not be permitted on school property or at school functions either during or after school hours.

## DRINKING

Drinking, evidence of drinking, or the possession of alcoholic beverages on school premises or at school activities is prohibited by Board of Education policy.

## POLICY ON USE OF DRUGS

Use, possession or sale of drugs other than those obtained by legal prescription, on school premises or at school activities, will not be tolerated by the Board of Education. Students violating this provision will be suspended from school and prior to re-entering school, will be accompanied by their parents for an informal hearing.

In addition, the superintendent shall have the authority to refer cases of alleged possession of dangerous drugs to appropriate law enforcement officials.

After appropriate investigation by school officials, complaints about the alleged sale of dangerous drugs shall be referred to appropriate law enforcement officials. Action of law enforcement officials shall supersede actions of school officials in cases of this nature.

## SUSPENSION

The superintendent or other designated administrators may suspend from required attendance a student who is 1) insubordinate or disorderly, 2) whose physical or mental condition endangers the health, safety or morals of himself or of other students.

## DRIVING TO SCHOOL

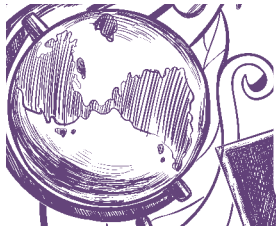
Students driving to school, whether regularly or occasionally, must register their car model, license number, color and proof of insurance at the high school office. In addition, students will need a permit and attend a safety meeting. All unlicensed vehicles including mini-bikes, dirt bikes, tractors, lawn mowers and ATVs are prohibited on school premises. Snowmobiles are also prohibited except in areas approved by High School Administration.

Students riding bicycles or driving cars are responsible for the safety of pedestrians at all times. The speed limit on school grounds is five miles per hour.

No students are to be in their vehicles or in the parking lot area during school hours. There is to be no spinning of tires, stopping or turning abruptly. Any violation of the above rules will mean student loss of parking lot privileges.

A summary of the BOE approved Code of Conduct is provided to each student annually. The entire code is available upon request in each building's main office.





# NOVEMBER 2025

Holland Patent Central School District



SUNDAY	MONDAY	TUESDAY	WEDNESDAY	THURSDAY	FRIDAY	SATURDAY
						1  All Saints Day
2  Daylight Saving Time Ends	3	4  Election Day	5	6  National Junior Honor Society Induction Ceremony, 5 p.m.	7  End Marking Period 1  GWF & HPE Parent Teacher Conferences, 11 a.m. Dismissal	8
9	10  Veterans Day Concert, 6:30 p.m., HS Aud.	11  Veterans Day NO SCHOOL	12  Circus, 6 p.m.  Board of Education Regular Meeting, 6:30 p.m., Annex Conference Room	13  GWF & HPE Parent Teacher Conferences, 11 a.m. Dismissal	14  GWF & HPE Parent Teacher Conferences, 11 a.m. Dismissal	15
16	17  Varsity and JV Winter Sports Start  Modified Wrestling, Volleyball and Swimming Starts	18	19  MS Character Education Breakfast  Financial Aid Night, 5-7 p.m.	20  HS Character Education Breakfast, 7:30 a.m.	21	22
23	24	25  Go Home Early Drill	26	27  Thanksgiving Day	28	29
30			NO SCHOOL - THANKSGIVING RECESS			

# SPECIAL SERVICES AND PROGRAMS

## HEALTH SERVICES

Health services are provided to students by registered nurses. First aid is rendered to students according to orders provided by the District physician. Yearly physicals can be completed by the District physician or his/her assistant for those students in kindergarten and grades 1, 3, 5, 7, 9 and 11 who have not had a physical. All students entering school for the first time are required to have been immunized against diphtheria, tetanus, pertussis (DTP), measles, mumps, rubella (MMR), polio, hepatitis B, varicella (chickenpox), haemophilus influenzae (Hib) and pneumococcal conjugate. Additionally, students entering grades 7, 8, 9 and 10 must have received one dose of the Meningococcal vaccine; a second dose is required by grade 12, but cannot be given prior to age 16. An updated Emergency Form is required annually.

## SPEECH & LANGUAGE PROGRAM

This program consists of two full-time speech therapists for the District. The program consists of identification of those students who have functional or organic speech, language, voice, and hearing problems. Services are provided based on individual student needs.

## OCCUPATIONAL & PHYSICAL THERAPY

This program consists of occupational and physical therapists who address students whose fine/gross motor needs impact their education.

## COUNSELING

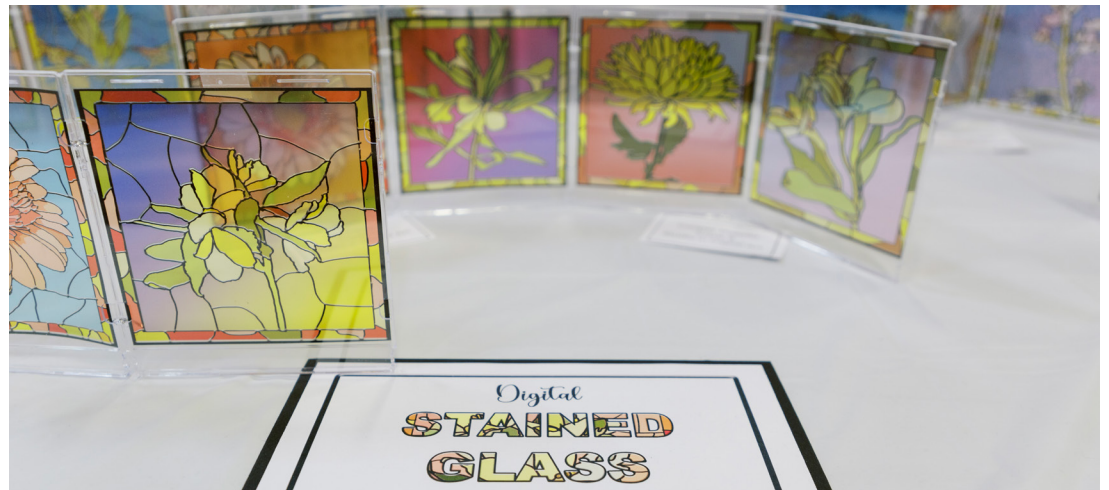
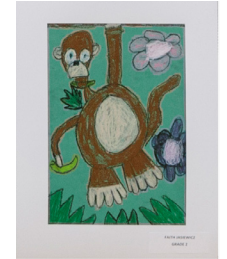
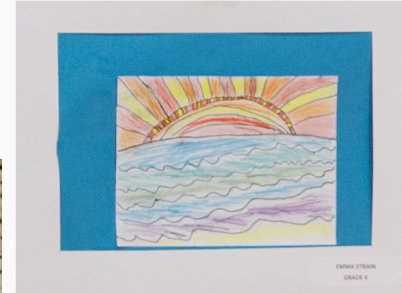
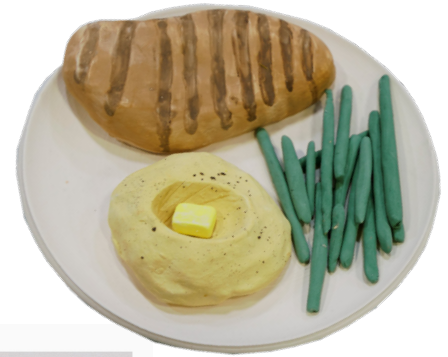
This program consists of three school counselors and five social workers. The school counseling department at HPCSD empowers students to utilize their individual strengths to achieve personal excellence, academically and socially, in a safe and nurturing environment with the ultimate goal of preparing students to be responsible, lifelong learners.

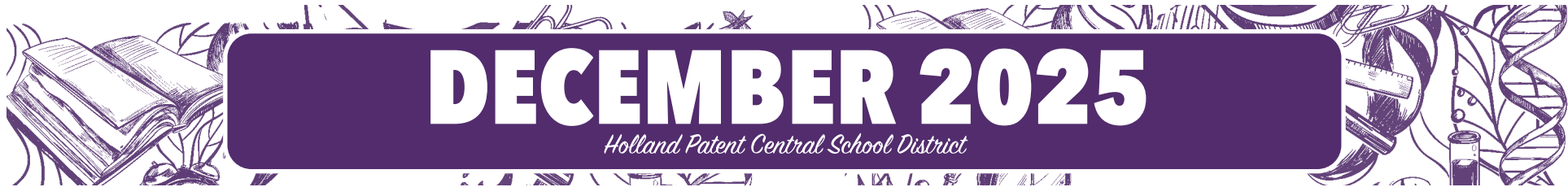
## PSYCHOLOGICAL SERVICES

School psychological services are provided to students K-12 to offer consultation with parents and/or teachers, counseling, and evaluations to determine the presence of educational disabilities. All CSE referrals must have parent notification and permission before formal testing takes place.

## KINDERGARTEN SCREENING

Each spring, students who are entering kindergarten are screened at General William Floyd Elementary. The kindergarten teachers along with the reading teacher and speech therapist screen each student. The results are shared with each child's parents. The school nurse is also available to meet with parents to complete school forms and to provide school counseling regarding incoming health records.





# DECEMBER 2025

*Holland Patent Central School District*

SUNDAY	MONDAY	TUESDAY	WEDNESDAY	THURSDAY	FRIDAY	SATURDAY
	1  Modified Basketball Starts	2	3  Grades 4-12 Winter Orchestra Concert, 6:30 p.m., HS Aud.	4	5	6
7  Pearl Harbor Remembrance Day	8	9	10  Board of Education Regular Meeting, 6:30 p.m., HS Library	11  Grades 4-12 Winter Chorus Concert, 6:30 p.m., HS Aud.	12  15-Week Interim	13
14  Hanukkah Begins	15	16  Grades 5-12 Winter Band Concert, 6:30 p.m., HS Aud.	17	18  Concert Snow Date, 6:30 p.m., HS Aud.	19	20
21  First Day of Winter	22  Hanukkah Ends	23	24  Christmas Eve	25  Christmas	26  Kwanzaa	27
NO SCHOOL - WINTER RECESS						
28	29	30	31  New Year's Eve			
NO SCHOOL - WINTER RECESS						

# HP ELEMENTARY SCHOOLS

## GENERAL WILLIAM FLOYD ELEMENTARY SCHOOL (PRE—K-2)

## HOLLAND PATENT ELEMENTARY SCHOOL (3-5)

**KRISTIN CASAB**  
*GWF Elementary Principal*

**SARAH VERGIS**  
*HP Elementary Principal*

### Welcome to the 2025–2026 School Year!

At General William Floyd Elementary (serving students in Pre-K through Grade 2) and Holland Patent Elementary (Grades 3–5), we are excited to welcome your family to a new school year filled with learning, growth, and opportunity.

Over the years, a strong sense of community has formed among our students, staff, and families. We believe that open communication and close collaboration with parents are essential to supporting every child's academic, social, and emotional success. Together, we can ensure that your child has a meaningful and enriching school experience.

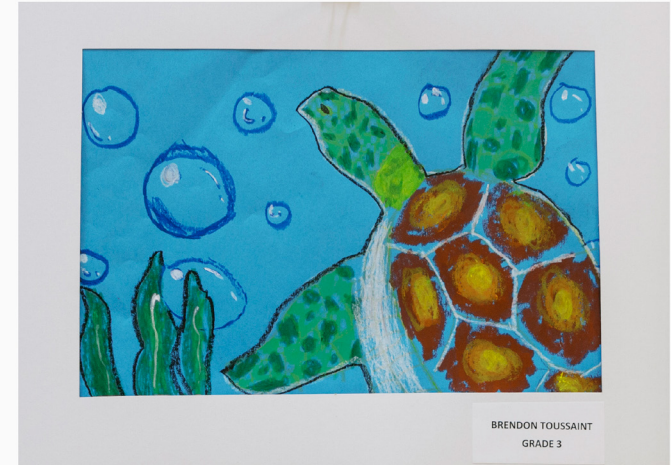
Our schools are committed to educating the whole child. Through schoolwide programs and activities, students have opportunities to build not only academic skills but also social connections and character. Initiatives like the Positivity Project and Caught Purple Handed help reinforce kindness, respect, and strong peer relationships.

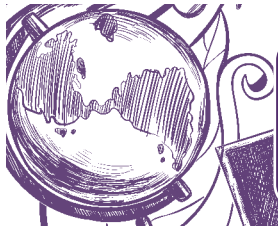
To support each child's academic journey, we use a variety of high-quality teaching resources. In reading, writing, and math, we use the workshop model to provide personalized and engaging instruction. In science, we are aligning our teaching with the Next Generation Science Standards (NGSS), using hands-on BOCES Science Kits to bring learning to life. In math, we use the EnVisions program, which blends problem-solving, conceptual understanding, and practical application to build confidence and critical thinking.

We also know that education goes beyond the classroom. Our students enjoy enriching experiences in art, music, physical education, and technology—skills that are essential for lifelong learning and success in a changing world.

We're proud of the strong partnerships that make our schools thrive. From the Golden Knights Parent Teacher Association and Connected Community Schools, to our dedicated faculty, community partners, and Board of Education—together, we are building a supportive, connected learning environment for every child.

We look forward to a fantastic year ahead and thank you for being an essential part of our school community!





# JANUARY 2026

*Holland Patent Central School District*

SUNDAY	MONDAY	TUESDAY	WEDNESDAY	THURSDAY	FRIDAY	SATURDAY
				1  New Year's Day  Kwanzaa Ends	2	3
				NO SCHOOL - WINTER RECESS		
4	5  Pre-K and Kindergarten Open Enrollment	6	7	8	9	10
11	12	13	14  Board of Education Regular Meeting, 6:30 p.m., Annex Conference Room	15	16	17
18	19  Martin Luther King Jr. Day	20	21	22	23  End Marking Period 2	24
	NO SCHOOL		REGENTS EXAMS/MIDTERM TESTING			
25	26	27  Look at Me I'm Three, 5:30 p.m., GWF Cafeteria	28	29	30	31

# HOLLAND PATENT MIDDLE SCHOOL

LISA GENTILE *Principal*

## PROGRAMS

Essentially, the middle school program is designed for those students who are no longer elementary students and not yet high school students. This program is designed to teach students how to use skills acquired in the elementary school so that they may learn more independently. During their journey through the "middle years," students are changing physically, intellectually, emotionally and socially. Middle school philosophy strives to address academic needs as well as attending to personal needs. Holland Patent Middle School has high expectations and offers quality learning opportunities for all.

Middle schools are faced with many challenges. At Holland Patent Middle School, we continue to align to the New York State standards with our curriculum. We encourage the use of consistent and pervasive instructional and learning strategies, as well as assessments and evaluations that promote learning within the middle school. In addition, the integration of technology is emphasized in order to provide students with a tool that will be naturally integrated across the curricular areas. These efforts will allow the middle school to continue to be a strong link between the elementary and high school programs and articulate a clear vision based on research-based practices.

For information on the middle school discipline policies or specific programs, please refer to the Student Handbook.

## GROUPING SYSTEM

Students in grades 6, 7 and 8 will be grouped heterogeneously (mixed ability) for most classes. Specific criteria in the form of a student profile rating is used to determine placement in the accelerated instructional programs (math and science). Student performance will be monitored and evaluated on a regular basis throughout the year.

Students in grade 6 are taught the following subjects: Reading, Writing, Mathematics, Science, Social Studies, Physical Education, Art, Music, Computer Applications and Home & Careers.

Students in grade 7 are taught the following subjects: English Language Arts, Mathematics, Social Studies, Science, Physical Education, Art, Health, Home & Career Skills, Music and Foreign Language (Spanish or French).

Students in grade 8 are taught the following subjects: English Language Arts, Mathematics, Social Studies, Science, Agriculture, and Foreign Language. They will continue to have Physical Education and Fine Arts.

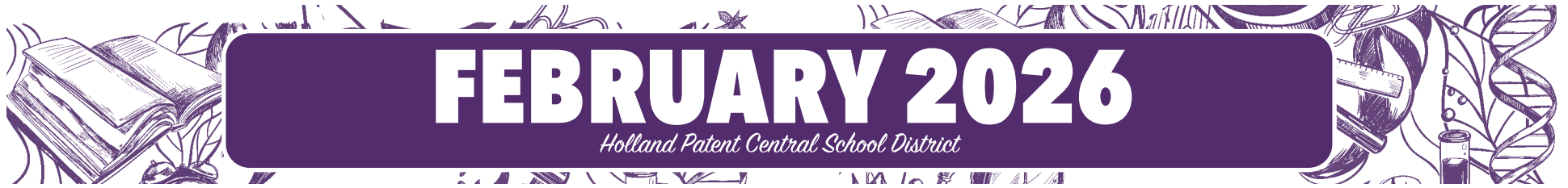
## GRADING SYSTEM

The school year is divided into four 10-week marking periods. Computerized report cards are sent home at the completion of each period with grades ranging from A+ to F. The minimum passing grade for all subjects is a D. The following is the grading scale for the middle school.

A+	=	97-100	(12 points)
A	=	93-96	(11 points)
A-	=	90-92	(10 points)
B+	=	87-89	(9 points)
B	=	83-86	(8 points)
B-	=	80-82	(7 points)
C+	=	77-79	(6 points)
C	=	73-76	(5 points)
C-	=	70-72	(4 points)
D	=	65-69	(2 points)
F	=	below 65	(0 points)

A formula based on the 12-point rating scale is used to determine averages and for HONOR ROLL (8 points), HIGH HONOR ROLL (9 points) and PRINCIPAL'S LIST (11 points). This is based upon how often the course meets during the marking period and also over the course of the school year. Biology is weighted at 1.3. Algebra, Math 7H, French I and Spanish I are weighted as 1 .05. Grade 6 Language Arts is weighted at 2 because it meets for 80 minutes per day. An everyday subject is weighted at 1. An every other day subject is weighted at .5. Band, Wind Ensemble, chorus and Orchestra lessons are weighted at .17.





# FEBRUARY 2026

*Holland Patent Central School District*

SUNDAY	MONDAY	TUESDAY	WEDNESDAY	THURSDAY	FRIDAY	SATURDAY
1	2 Groundhog Day	3	4 MS Character Education Breakfast	5 HS Character Education Breakfast, 7:30 a.m.	6	7
8	9	10	11 Board of Education Regular Meeting, 6:30 p.m., HPE Cafeteria	12	13	14 Valentine's Day
15	16 Presidents' Day	17 Lunar New Year Ramadan Begins Mardi Gras	18 Ash Wednesday - Lent Begins	19	20	21
NO SCHOOL - MID-WINTER RECESS						
22	23	24 Look at Me I'm Three, 5:30 p.m., GWF Cafeteria	25	26	27 Knightly Players Musical Production, 6:30 p.m., HS Aud.	28 Knightly Players Musical Production, 6:30 p.m., HS Aud.

# HOLLAND PATENT HIGH SCHOOL

**RUSSELL STEVENER, JR.**  
*High School Principal*

**KELLY HEALEY**  
*Assistant Principal*

The faculty and staff at Holland Patent High School are committed to providing a comprehensive experience so that all students can be productive members of society.

The high school program adopted the slogan "success is the only option." Over the course of the past several years, the high school has seen their Regents results consistently amongst the best in the Mohawk Valley. In addition to their academic excellence, our music, arts and athletic programs perform at a high level across the board and have won many different awards and championships during the past few years.

The high school has worked diligently incorporating Learner-Focused Strategies into their lesson plans and daily lessons. In addition, many classrooms are equipped with advanced technology such as interactive white boards and document cameras which help facilitate student learning. Students are encouraged to take the many varied course offerings, including Advanced Placement (AP) and Dual Credit courses. We currently offer the following AP and Dual Credit Courses:

## **ADVANCED PLACEMENT**

AP World: Modern  
AP U.S. History  
AP Government  
AP English Language and Composition  
AP Biology w/ Lab  
AP Seminar  
AP Calculus

## **SYRACUSE UNIVERSITY**

### **PROJECT ADVANCE (SUPA)**

Chemistry  
English 12  
Presentational Speaking  
Physics

## **MOHAWK VALLEY**

### **COMMUNITY COLLEGE**

EN 101/102 - English 12  
BM 101 - Economics  
PY 101 - Psychology  
SO 101 - Sociology  
MA 150 - Pre Calculus  
MA 115 - Intermediate Math  
MA 125 - Algebra/Trig  
MA 110 - Statistics  
FR 191/192 - Level 4 French 1 & 2

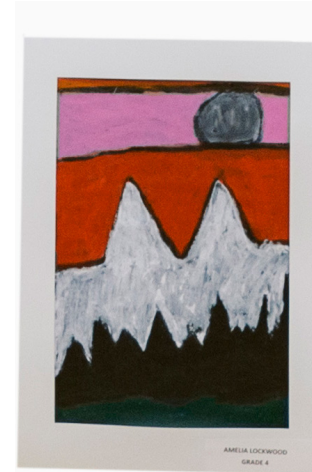
SP 191/192 - Level 4 Spanish 1 & 2  
FR 201/202 - Level 5 French 1 & 2  
SP 201/202 - Level 5 Spanish 1 & 2  
FL 111/112 - Mandarin Chinese 3  
FL 211/212 - Mandarin Chinese 4  
AA 111 - Intro to Keyboarding  
BM 100 - Introduction to Business  
BM 150 - Business Entrepreneurship  
BM 108 - Personal Finance  
IS 101 - Computers and Society  
MT 140/251 - CAD 1 & 2  
FA 100 - Design Media Exploration  
FA 101 - Drawing & Painting 2 or 3  
FA 105 - Drawing & Painting 2 or 3  
GD 145 - Computer Graphics 2 or 3  
PE 154 - Fitness Center  
PE 111 - Strength Training  
PE 170/171 - Lifesaving

## **HERKIMER COLLEGE**

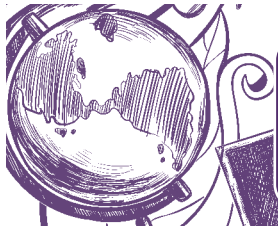
HU 100 - ASL 3  
HU 101 - ASL 4

## **SUNY COBLESKILL**

ANSC 101 - Animal Science  
ORHT 105 - Plant Science  
AGBU 101 - Ag. Business and Leadership



We strongly encourage your child to enroll in these various college level courses. For more information on these courses, or anything else, please contact your child's school counselor or the main office. We look forward to an exciting and prosperous 2025-26 school year.



# MARCH 2026

Holland Patent Central School District



SUNDAY	MONDAY	TUESDAY	WEDNESDAY	THURSDAY	FRIDAY	SATURDAY
1	2 Purim Begins	3 Purim Ends	4 Holi	5	6 25-Week Interim	7
8 Daylight Saving Time Begins	9	10 GWF & HPE Young Peoples Concert, 9:30 a.m., HS Aud.	11 Board of Education Regular Meeting, 6:30 p.m., GWF Cafeteria	12 GWF & HPE Young Peoples Concert Snow Date, 9:30 a.m., HS Aud.	13	14
15	16 JV and Varsity Spring Sports Start	17 St. Patrick's Day	18 Ramadan Ends	19	20 Superintendent's Conference Day First Day of Spring <b>NO SCHOOL</b>	21
22	23 Modified Spring Sports Start	24	25	26	27	28
29 Palm Sunday	30	31 Look at Me I'm Three, 5:30 p.m., GWF Cafeteria				

# HOLLAND PATENT HIGH SCHOOL

## REQUIREMENTS FOR GRADUATION

Graduation requirements, as determined by part 100 regulations of the Commissioner of Education, require each student complete 22 units of credit and at least meet a minimum grade of 65 on Regents exams in ELA, Global History, U.S. History, Algebra and one area of science.

## REQUIRED COURSES & CREDIT

4 units of English and the ELA Regents.

4 units of credit in Social Studies. One unit must be in the United States History and Government. Must also pass the United States History and Government exam and Global History exam.

3 units of credit in Mathematics. Algebra I Regents.

3 units of Science and one of the Regents exams in Science. In order to qualify to take any Regents examination in a science, a student must complete 1200 minutes of hands-on lab experience.

1 unit of credit in the arts. This includes music, arts, or technology.

1 unit of credit in language other than English. (Spanish, French, Mandarin Chinese or American Sign Language)

2 units of credit in Physical Education.

1/2 credit in Health.

Additional units in English, mathematics, social studies, science, the arts, languages other than English, career and technical education.

## TYPES OF DIPLOMAS

Please access the following website for an in-depth description of each diploma type:

<http://www.p12nysed.gov/ciai/gradreq/diploma-credential-summary.pdf>

1. Regents
2. Regents (through appeal)
3. Regents with Honors
4. Regents with Advanced Designation
5. Regents with Advanced Designation with an annotation that denotes Mastery in Math and or Science
6. Regents with Advanced Designation with Honors
7. Local (through appeal)
8. Local, Regents, Regents with Advanced Designation (with or without Honors), with a Career and Technical Education Endorsement

## SELECTING COURSES

Students are advised to register for 6.5 credits in grades 9, 10 and 11 and at least 5 credits in grade 12. Special permission must be obtained from the Counseling Department to vary this rule. Actual selection of a high school program begins in grade 8. An individual meeting with the student and his/her parents or guardians is held to review graduation requirements and select coursework. The student's achievement and results of various tests help in making this decision.

## CHANGES IN SUBJECTS

Counselors have worked with each pupil and set up a program suitable to the individual student. Changes to a student's schedule are a very big decision and may affect their graduation status or date. If you need to request a schedule change, please consult with your child's school counselor. All course changes must be made by two weeks after the start of the school year.

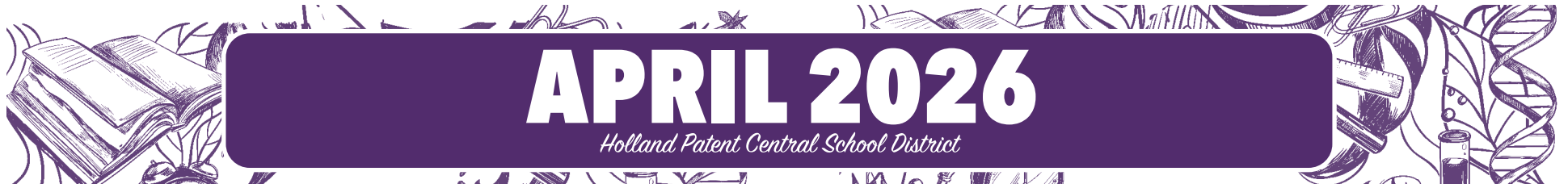
## WITHDRAWAL FROM SCHOOL

Any student who plans to withdraw from school, for whatever reason, should follow this procedure: obtain a withdrawal slip from his/her school counselor and then have the slip signed by:

- a. Counselor
- b. All teachers to whom you are assigned every period
- c. Library Media Specialist
- d. High School Principal
- e. High School Nurse

After all these signatures have been obtained, return the slip to the Counseling Office. All books and fees must be accounted for before leaving. This is taken care of by the Main Office secretary.





# APRIL 2026

*Holland Patent Central School District*

SUNDAY	MONDAY	TUESDAY	WEDNESDAY	THURSDAY	FRIDAY	SATURDAY
			<b>1</b>  3rd Grade Concert, 1 p.m., HS Aud.  <b>April Fool's Day</b>  Passover Begins	<b>2</b>	<b>3</b>  Good Friday  NO SCHOOL - SPRING RECESS	<b>4</b>
<b>5</b>  Easter	<b>6</b>	<b>7</b>	<b>8</b>	<b>9</b>  Passover Ends	<b>10</b>	<b>11</b>
NO SCHOOL - SPRING RECESS						
<b>12</b>	<b>13</b>	<b>14</b>	<b>15</b>  SAT School Day, 8 a.m.	<b>16</b>	<b>17</b>  GWF & HPE Parent Teacher Conferences, 11 a.m. Dismissal  End of Marking Period 3  Cabaret, 6:30 p.m., HS Aud.	<b>18</b>  Cabaret, 6:30 p.m., HS Aud.
<b>19</b>	<b>20</b>	<b>21</b>	<b>22</b>  Board of Education Regular Meeting - BOCES Budget, 6:30 p.m. Annex Conf. Room  <b>Earth Day</b>	<b>23</b>	<b>24</b>  Arbor Day	<b>25</b>
		GRADES 3-8 NYS ELA TEST				
<b>26</b>	<b>27</b>	<b>28</b>  Look at Me I'm Three, 5:30 p.m., GWF Cafeteria	<b>29</b>  MS Character Education Breakfast	<b>30</b>  HS Character Education Breakfast, 7:30 a.m.  1st Grade Concert, 1:15 p.m., GWF Gymnasium		

# HOLLAND PATENT HIGH SCHOOL PROGRAMS

## OPEN HOUSE

Will be held September 2, 2025 at 6:15 p.m. Students and parents are encouraged to attend to meet their teachers, find their lockers, and pick up their Chromebooks for the school year.

## SENIOR AWARDS NIGHT

Will be held June 11, 2026 at 7:00 p.m. Awards will be presented to our graduating seniors. Members of the community and parents are invited to attend this event.

## LIBRARY MEDIA CENTER HOURS

The high school library is open from 7:45 a.m. through 2:40 p.m. during regular school sessions.

## COLLEGE ADMISSIONS

"It's not a dream, it's a plan!"

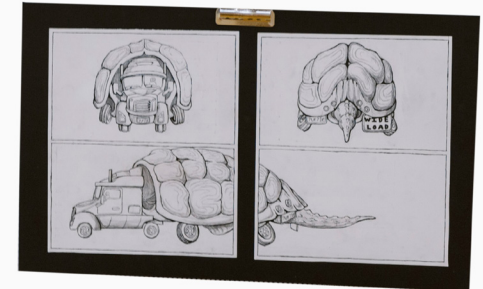
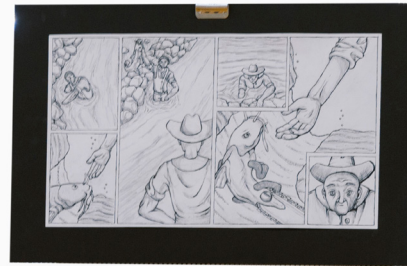
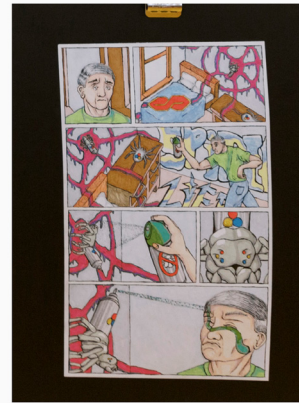
All students planning to attend college are urged to take the PSAT, SAT or the ACT. These tests can be taken in the junior year and repeated in the senior year, depending on the requirements of the particular school. Students are urged to check with the Counseling Office for additional information. Fee waivers are available for families who qualify. Please reach out to your child's school counselor early in their high school career to create a plan to ensure they qualify for many of our Holland Patent scholarships.

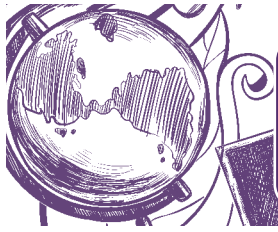
Students should visit prospective schools during their junior and senior years. All students are provided a handbook at the beginning of each school year. Parents/guardians are encouraged to review this handbook with their child and reach out to their student's school counselor if they have any questions. The counseling office will be offering various opportunities throughout your child's high school career to research and visit colleges and higher education.

## BOCES - AREA CAREER & TECHNICAL EDUCATION CENTER

Holland Patent High School participates in the program at the Career and Technical Education Center in New Hartford. The design of this program is to prepare the student for specific trades at the "job entry level" or to "further their technical education by attending a two-year technical program."

Attendance at the Center is for a half day, either morning or afternoon. During the other half of the day, participants will attend Holland Patent High School along with their peers, taking English, social studies, math, science, and other required subjects. The counseling office will be offering various opportunities to explore careers through job shadows, internship programs and hands-on events.





# MAY 2026

Holland Patent Central School District



SUNDAY	MONDAY	TUESDAY	WEDNESDAY	THURSDAY	FRIDAY	SATURDAY
					1	2
3	4	5 Budget Hearing - No Board of Education Regular Meeting, 6 p.m., HS Library  Cinco De Mayo	6	7	8	9  Junior Prom and Grand March, 6-10 p.m.
		GRADES 3-8 NYS MATH TEST				
10  Mother's Day	11  GRADES 5 & 8 NYS SCIENCE ASSESSMENT	12	13  Grades 4-12 Spring Orchestra Concert, 6:30 p.m., HS Aud.	14  Grades 4-12 Spring Band Concert, 6:30 p.m., HS Aud.	15	16  Armed Forces Day
	KINDERGARTEN SCREENING					
17	18	19 Taste of the Arts Budget Vote/Board Election, 10 a.m.-8 p.m., HS Gym Grades 4-12 Spring Chorus Concert, 6:30 p.m., HS Aud. Board of Education Regular Meeting, 7 p.m., HS Library	20	21  Shavuot Begins	22  35-Week Interim	23  Shavuot Ends
	PRE-K SCREENING					
24	25  Memorial Day NO SCHOOL	26  Look at Me I'm Three, 5:30 p.m., GWF Cafeteria	27	28  2nd Grade Musical, 1:15 p.m., GWF Gymnasium	29	30
31						

# ART EDUCATION CURRICULUM AND PROGRAMS

Art in the school is both a body of knowledge and a series of activities which the art instructor organizes to provide experiences related to specific goals. The sequence and depth of these experiences are determined by the nature of the art discipline, the objectives desired, and by the interests, abilities, and needs of children at different levels of growth. As a result of the art program, each pupil should demonstrate to the extent possible, their capacity to: (1) have intense involvement in and response to personal visual experiences; (2) perceive and understand visual relationships in the environment; (3) think, feel, and act creatively with visual art materials; (4) increase manipulative and organizational skills in art performance; (5) acquire a knowledge of visual art heritage; (6) use art knowledge and skills in his/her personal and community life; (7) make intelligent visual judgments suited to his/her experience and maturity; and (8) understand the nature of art and the creative process.

## GRADES PRE-K-5

Have Art Instruction once a cycle for 40 minutes (all year)

## GRADE 6

Have Art Instruction every day for 40 minutes (10 weeks)

## GRADE 7

Have Art Instruction every other day for 40 minutes (20 weeks)

## GRADE 8

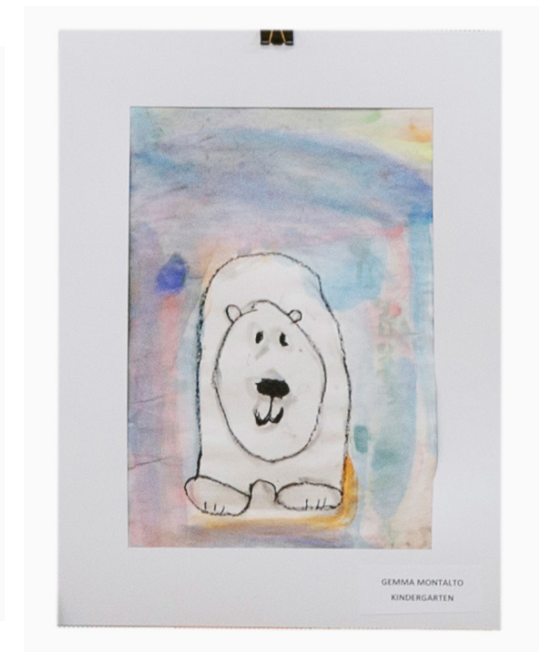
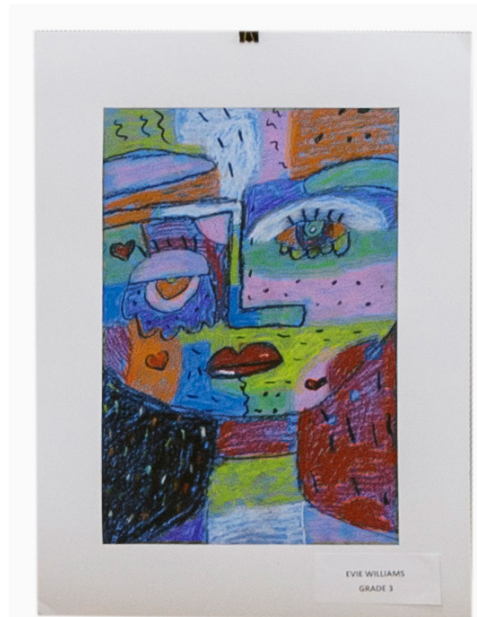
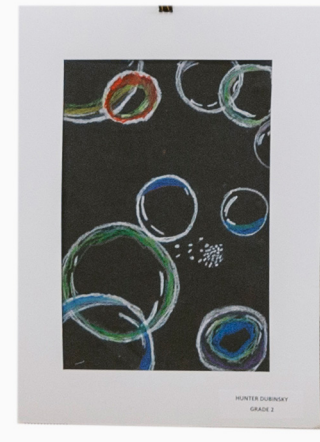
Art elective available for HS credit.

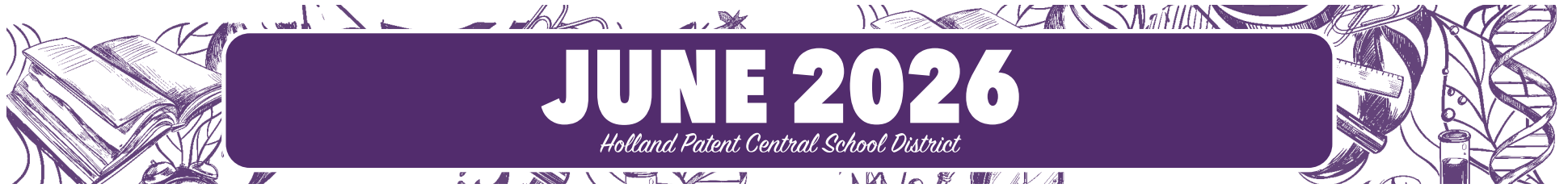
## GRADES 9-12

Non-Regents program courses - design, photography, sculpture, drawing, painting, and computer graphics.

## GRADES 11-12

MVCC Dual Credit Courses available: Drawing & Painting, Design & Computer Graphics.





# JUNE 2026

Holland Patent Central School District

SUNDAY	MONDAY	TUESDAY	WEDNESDAY	THURSDAY	FRIDAY	SATURDAY
	1	2 FFA Banquet, 5:30 p.m.	3	4	5	6
7	8	9	10 Board of Education Regular Meeting, 6:30 p.m., Annex Conference Room	11 NHS Dinner, 5:30 p.m. Senior Awards, 7 p.m.	12	13
		REGENTS EXAMS			SENIOR TRIP	
14 Flag Day SENIOR TRIP	15	16 Senior Breakfast, 8 a.m. Senior March, 9 a.m. HS Student Awards HS Last Day of Classes	17 Graduation Rehearsal, 9:30 a.m. Senior Ball, 6-9 p.m.	18 Pre-K Graduation, 10:30 a.m. HS Graduation, 8 p.m.	19 Juneteenth NO SCHOOL	20
21 Father's Day First Day of Summer	22	23 MS Early Dismissal, 10 a.m. GWF & HPE Early Dismissal, 11 a.m. 5th Grade Moving Up Day	24 MS Early Dismissal, 10 a.m. GWF & HPE Early Dismissal, 11 a.m.	25 MS Early Dismissal, 10 a.m. GWF & HPE Early Dismissal, 11 a.m.	26 MS Early Dismissal, 10 a.m. GWF & HPE Early Dismissal, 11 a.m. End Marking Period 4	27
		REGENTS EXAMS			REGENTS RATING DAY	
28	29	30				

# MUSIC CURRICULUM AND PROGRAMS

The Holland Patent Central School District Music Program is proud to provide students with a pre-K through 12th grade curriculum that features a variety of performing ensembles and music classes. Recognized as a NAMM Best Community for Music Education, the Holland Patent Central School District offers opportunities for all students to reach their highest level of musical achievement.

## CURRICULUM OFFERINGS

### ELEMENTARY (GRADES PRE-K-5):

- Classroom Music/Grade Level Concerts
- Elementary Orchestra/Lessons (Grades 3-5)
- Elementary Chorus (Grades 4-5)
- Elementary Band/Lessons (Grades 4-5)

### MIDDLE SCHOOL (GRADES 6-8)

- Classroom Music
- Orchestra
- Chorus
- Band
- Jazz Ensemble
- String Pops Ensemble
- Knightly Players Drama Club
- Vocal Ensemble

### HIGH SCHOOL (GRADES 9-12)

- Orchestra
- Select Chorus
- Mixed Chorus
- Wind Ensemble
- Jazz Ensemble
- String Pops Ensemble
- Vocal Ensemble
- Music Theory
- Tri-M Music Honor Society
- Knightly Players Drama Club
- Guitar I & Guitar II Classes
- Music Production

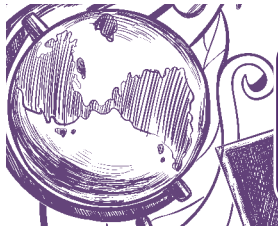


## BEGINNING INSTRUMENT SELECTION

Students interested in learning a band/orchestra instrument are asked to complete an Instrument Survey (distributed in May) with their top three instrument choices for the upcoming school year. To help students make a successful decision, the music program offers:

- Beginning Band/Orchestra Information Meeting (September)
- Instrument Exploration (May)

Instrument selection is decided by music teachers to promote a successful learning experience. Influencing factors include: experience, ability and balanced instrumentation for each group. Students may rent/purchase instruments from local music stores once instrument selections are determined. Students may also rent larger instruments from the school at the discretion of the music teacher.



# JULY 2026

Holland Patent Central School District

SUNDAY	MONDAY	TUESDAY	WEDNESDAY	THURSDAY	FRIDAY	SATURDAY
			1	2	3	4 Independence Day
5	6	7	8	9	10	11
12	13	14	15	16	17	18
19	20	21	22	23	24	25
26	27	28	29	30	31	

# PHYSICAL EDUCATION/ATHLETIC PROGRAMS & POLICIES

## PHILOSOPHY STATEMENT

Physical education helps students to develop personal attributes, health and fitness knowledge and skills, feelings of self-worth, and a personal value system, all of which act as necessary catalysts in the development of individual lifestyles. Such development is essential for each student to become an informed, healthy, productive, and responsible citizen.

## MISSION

The mission of physical education is to encourage all students to sustain regular, lifelong physical activity as a foundation for a healthy, productive, and fulfilling life.

Goals and Objectives:

- Help students understand that physical activity provides opportunities for enjoyment, challenge, self-expression, and social interaction.
- Make each student aware of the effect of physical activity upon the body.
- Encourage students to achieve and maintain a health-enhancing level of physical fitness.
- Ongoing professional development of teachers.

## INTERSCHOLASTIC SPORTS

Interscholastic Sports Program is available to students in grades 7-12. HPCS is a member of the Tri-Valley League. Practice and games are held during the after-school hours.

## INSURANCE

The student must report any injury to the PE teacher/coach immediately. The students must also report to the nurse as soon as possible to fill out a report if medical treatment is necessary. If this report is not made out, no claims may be filed with the insurance company. The insurance company must receive this report within 30 days of injury.

The school insurance policy pays after the family's insurance is exhausted (including Major Medical). IT WILL NOT NECESSARILY TAKE CARE OF ALL REMAINING BILLS as there is a set schedule of maximum payment for each type of injury.

Families without health insurance may incur substantial debt for medical care due to injuries sustained while participating in school activities. The school insurance program provides minimal reimbursement for medical expenses in these situations. THE BALANCE BETWEEN SCHOOL INSURANCE REIMBURSEMENT AND THE ACTUAL BILL BECOMES THE RESPONSIBILITY OF THE FAMILY.

## INTERSCHOLASTIC SPORTS PHYSICALS

Students planning on participating on a sports team during the school year are required to have an annual physical in order to participate. The District does provide and schedule sports physicals for students monthly during the school year. Parents do have the option to take their son/daughter to their own physician and provide the District with verification prior to tryouts and/or participation. The Athletic Department encourages all parents to take advantage of the sports physical provided by the District.





# AUGUST 2026

Holland Patent Central School District

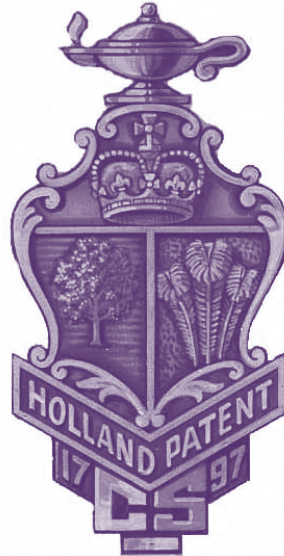
SUNDAY	MONDAY	TUESDAY	WEDNESDAY	THURSDAY	FRIDAY	SATURDAY
						1
2	3	4	5	6	7	8
9	10	11	12	13	14	15
16	17	18	19	20	21	22
		REGENTS EXAMS				
23	24	25	26	27	28	29
30	31					

# HOLLAND PATENT CENTRAL SCHOOL

---

## *Alma Mater*

*Though we're but  
a country high school  
Of name unknown to fame,  
To our colors we are loyal  
Our heritage we claim;  
We defend the gold and purple  
Wherever we may be,  
Our hearts forever faithful  
To the old school in H.P.*



*Oh the purple hue is royal  
The gold is pure and fine,  
And both the king's apparel  
Ordained by word divine;  
Therefore royal are our colors  
To them we true must be,  
To show we love and honor  
The old high school in H.P.*