

BCPS A RATED SCHOOL

# PARK TRAILS



2025-2026

## Back to School Guide

*Together We Lead,  
Together We Succeed*

10700 Trails End  
Parkland, FL 33076

Phone 754-322-7800

Fax 754-322-7840

Attendance 754-322-7802

ASP After Care 954-592-3361

Bus Transportation 754-321-4000

Mr. Drew Gerlach, Principal

Ms. Christina McNair, Assistant Principal

Mr. Peter Policastro, Assistant Principal

Welcome back and happy New Year Park Trails families! We all hope you had a phenomenal and enjoyable summer vacation and are ready to kick off, what will be another amazing school year filled with tons of wonderful memories and adventures!

I am beyond excited to share that Park Trails has again achieved an "A" school rating! I want to commend our students and staff for an "A" mazing job! With the help of our phenomenal teachers, our students made growth in Reading proficiency, 3<sup>rd</sup> Grade Reading proficiency, Science proficiency and improved in our learning gains in Math.

This year, we are excited to kick-off and begin to implement the "Leader in Me" program and other wonderful initiatives that will continue to develop all-around excellent students! We can't wait for you to see what we have in store!

Mr. Drew Gerlach - Proud Principal of Park Trails Elementary

If you need bus transportation for the upcoming school year, you must register for a bus assignment. Eligible students must have registered by June 27, 2025, to reserve a bus seat for the first day of school on Monday, August 11.

[www.browardschools.com/register2ride](http://www.browardschools.com/register2ride)

If you have any questions, please feel free to contact North Area Transportation  
Email: [Register2ride@browardschools.com](mailto:Register2ride@browardschools.com)  
Phone: 754-321-4499



# 2025/26

## REGISTER 2 RIDE



## Important Upcoming Dates

Friday, August 8<sup>th</sup> - Meet and Greet  
 8:30 am - Pre-K, VPK, K, and 1<sup>st</sup> Grade  
 9:30 am - 2<sup>nd</sup> & 3<sup>rd</sup> Grade  
 10:30 am - 4<sup>th</sup> and 5<sup>th</sup> grade

Monday, August 11<sup>th</sup> - 1<sup>st</sup> Day of School

Wednesday, August 20<sup>th</sup> - Back to School Night  
 6 to 7 pm - 3<sup>rd</sup>, 4<sup>th</sup>, and 5<sup>th</sup> grade

Tuesday, August 26<sup>th</sup> - SAC & SAF Meeting  
 2:30 pm

Wednesday, August 27<sup>th</sup> - Back to School Night  
 6 to 7 pm - Autism, VPK, Pre-K, K, 1<sup>st</sup>, & 2<sup>nd</sup> grade



## Park Trails Hours

- Our gates and doors open at **7:45 am**
- Breakfast served from **7:45 to 8:10 am**
- Learning begins **promptly** at **8:10 am**
- You are **LATE** at **8:15 am**
- School dismisses at **2:15 pm** daily



Stay up to date....



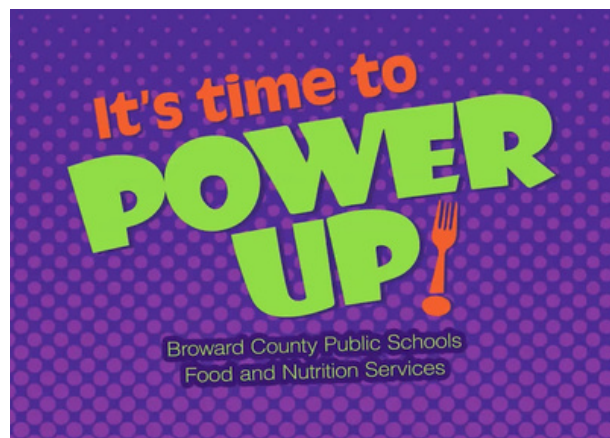
## Keep in touch

Make sure to bookmark our school news section of our website.

Please follow us on Instagram @PTEBCPS

Make sure your information is updated in Focus to ensure you receive all our emails, texts, and/or phone calls:

[browardschools.com/focus](http://browardschools.com/focus)



## Breakfast and Lunch at Park Trails

Breakfast will remain free for all enrolled students. This year, **lunch will cost \$3 per student per meal** unless you apply for Free or Reduced Lunch. Apply using the [www.myschoolapps.com](http://www.myschoolapps.com) website. A la carte items, such as ice cream, will continue to be available for purchase from their My School Bucks account. Parents, guardians and caregivers are encouraged to create an account for each student through [www.myschoolbucks.com](http://www.myschoolbucks.com) to make payments into their child's meal accounts.

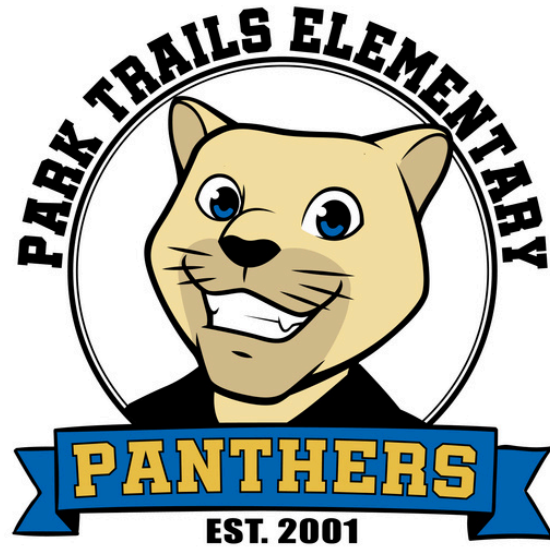
## First Days at PTE

On the first of school at PTE, parents of Pre-K, VPK, and Kindergarten students will be permitted to walk their child to class. We ask that parents park their cars at Pine Trails Park, use our crossing guard and walk their children into the building. Please do not use our front or back parking lot or park on the side of the road.

VPK and Pre-K students will be permitted to walk their students to class Monday through Friday of the first week.

Parents, please remember you will be dropping your child off at the door of their classroom.

On the second day of school, all K to 5 students will enter the building on their own. Staff and Safety Patrols will be ever-present to assist at gates, car line and in our hallways.



## PTE LOVES PTA

Please join and follow our amazing PTA at:

<https://parktrails.givebacks.com/president@ptaparktrails.com>  
Instagram @parktrailspata



## Volunteering at Park Trails Elementary

Park Trails loves and encourages volunteers in a myriad of ways. From being "room parents", to assisting teachers on a weekly basis, to chaperoning in-county field trips, you must be a cleared volunteer. Please complete the online application via the link provided. Please make sure you set aside enough time to be processed, which may take several weeks. You can apply here:

<https://www.browardschools.com/community/volunteer/volunteer-application>

For questions, contact volunteer services at 754-322-2300 or via email at [volunteer@browardschools.com](mailto:volunteer@browardschools.com)

**If you see something... say something**

Submit a tip easily via our anonymous **FortifyFL app**. Provide as much detail as you can including names of people involved, physical descriptions, school name, social media handles, etc. You can download the app off your phone or visit [www.getfortifyfl.com](http://www.getfortifyfl.com) for more information.

**SaferWatch** is a web based and mobile app system that allows users to report an incident as they see it happening or submit a tip later. It also provides real time communication during the situations. Visit [www.safetwatchapp.com](http://www.safetwatchapp.com) for more information.

## Arrival and Dismissal

### Arrival

- The main car line gate on Trails End will open at 7:45am daily. Gates will be monitored as students arrive and locked and/or monitored after arrival.
- Please be sure to pull all the way forward and have your child ready to exit the vehicle on the passenger side. Do not stop while traffic is moving and let your child out.
- Please give hugs & kisses, backpacks, lunches, and water bottles prior to stopping. Please do not get out of your vehicle.
- For safety reasons, students should only be dropped off in the car line. **Do not park** in the staff lot to drop off a student.
- For the safety of the students and staff, please do not use your cell phone in the car line.
- The pedestrian gates (east/west) will open at 7:45am. Parents may walk their child to the gate. **ONLY** students will be permitted on campus through the gates.
- The front doors close at 8:10am. If you arrive after the front doors are closed, please park and walk your child to the security office to sign them in.

### Dismissal

- Student are dismissed at 2:15pm.
- **Older siblings will be dismissed with their younger sibling at their location**
- All families will receive a car tag. If your family requires additional car hangers, please contact the office.
- If your child is a walker or bike rider, please keep your car hanger in case of rainy day dismissals.
- Please be sure your child's teacher has their most current dismissal information.
- Parents picking up in the car line should use the Trails End or the Pine Island (ONLY 2<sup>nd</sup> and 3<sup>rd</sup>) entrance.
- Parents picking up from Pine Island (2<sup>nd</sup> and 3<sup>rd</sup>), will not be let in until after all the yellow school buses have exited.
- All cars should have the car tag hanging from the rearview mirror when arriving for pickup. Please do not get out of your car. Students will get in on the passenger side of the car.
- For the safety of the students and staff, please do not use your cell phone in the car line.
- Walkers and bike riders will be dismissed through the pedestrian gates. Walkers and bike riders will not be permitted to leave campus if there is lightning in the area. In the case of a severe weather dismissal, parents will be notified, and all students will need to be picked up. Please have a plan in place for these situations.
- All bus students will have a tag on their backpacks indicating their bus number.
- K & 1 students riding buses will be escorted to their bus. Please be patient the first few days waiting for late buses.
- If you need to change your child's dismissal please review the following. If your child is on a bus or a daycare van/bus, please call the front office at 754-322-7800 before 1 pm. If your child is changing from car to walker (or walker to car), please notify your teacher in writing via email or in a note.
- **\*\*\*\*We are unable to take any dismissal changes after 1pm.\*\*\*\***

## Important Information

- Meet and Greet - Every teacher will reach out to our families prior to Meet and Greet to welcome you to their classroom. If you are not able to attend on Friday, 8/8, please share your child's dismissal and other pertinent information when they call.
- School Supplies from the School Store - If you ordered school supplies from the School Supply Store and were unable to pick up, they will be given to the classroom teacher for children within the first few days of school.
- Student IDs - All students will be issued school IDs in the beginning of the year. These IDs are to be always worn while on campus. IDs will remain at school
- Accessing Campus/Mandatory ID - All visitors to campus must show their ID to enter our campus. Please ensure you always have your ID with you. You will not gain access to our campus without proper identification.
- Late Items Reminder - To protect instructional time, we do not deliver late items to classrooms throughout the day. Glasses will be brought directly to students, but all other items (homework, snacks, money, forms, jackets, water bottles, etc.) will be picked up by students during transitions to and from lunch, specials, or recess. Please help your child arrive prepared each morning.
- Birthdays - Students are welcome to celebrate birthdays with their classmates. Birthdays will be celebrated during their recess time. Please remember only store bought treats **OR** a small birthday treat bag can be passed out. Please do not send in balloons, soda, and/or large food orders (i.e. pizza).
- Just a friendly reminder per Florida Statute and BCPS policy, cell phones and communication devices must remain off or silenced (not vibrate) and in backpacks during the school day. Please read here for more information on the policies: <https://tinyurl.com/y2jvjbx9>

### Food Allergies

Please make sure you enter all information into FOCUS accurately and also share any allergies with your classroom teacher when you connect.

### Medication

If your child needs to take medication at school, please bring the unopened prescription with a completed Authorization for Medication Form signed by the doctor to Meet and Greet on August 8<sup>th</sup>. Either our nurse or our front office will collect them.

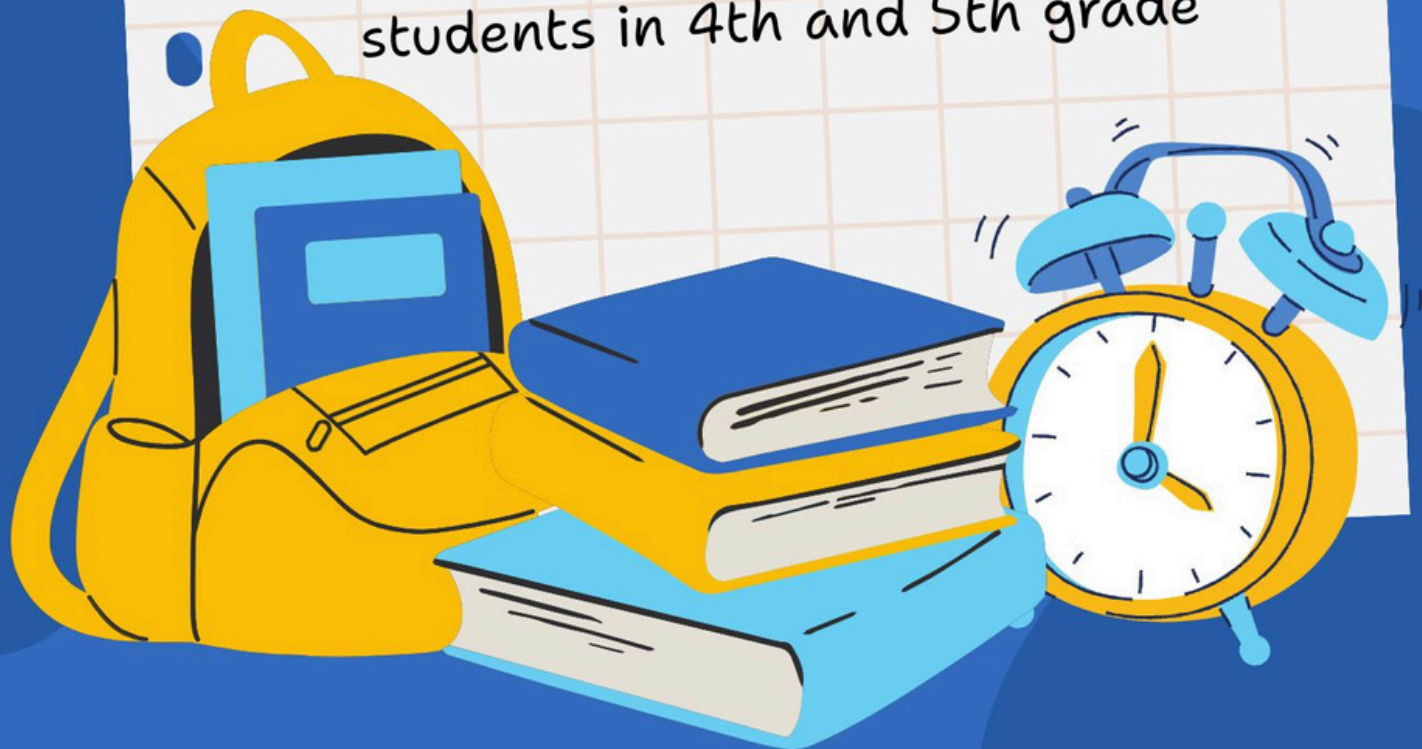


## Friday, Aug. 8th

8:30 to 9 AM - Meet and Greet for Students in VPK, Pre-K, Kindergarten, and 1st Grade

9:30 to 10 AM - Meet and Greet for students in 2nd and 3rd grade

10:30 to 11 AM - Meet and Greet for students in 4th and 5th grade





# 2025/26 SCHOOL CALENDAR

For an ADA accessible version of this calendar, visit [browardschools.com/accessiblecalendar](http://browardschools.com/accessiblecalendar).

AUGUST				
M	T	W	T	F
				1
4	5	6	7	8
11	12	13	14	15
18	19	20	21	22
25	26	27	28	29

SEPTEMBER				
M	T	W	T	F
1	2	3	4	5
8	9	10	11	12
15	16	17	18	19
22	23	24	25	26
29	30			

OCTOBER				
M	T	W	T	F
		1	2	3
6	7	8	9	10
13	14	15	16	17
20	21	22	23	24
27	28	29	30	31

NOVEMBER				
M	T	W	T	F
3	4	5	6	7
10	11	12	13	14
17	18	19	20	21
24	25	26	27	28

DECEMBER				
M	T	W	T	F
1	2	3	4	5
8	9	10	11	12
15	16	17	18	19
22	23	24	25	26
29	30	31		

JANUARY				
M	T	W	T	F
			1	2
5	6	7	8	9
12	13	14	15	16
19	20	21	22	23
26	27	28	29	30

FEBRUARY				
M	T	W	T	F
2	3	4	5	6
9	10	11	12	13
16	17	18	19	20
23	24	25	26	27

MARCH				
M	T	W	T	F
2	3	4	5	6
9	10	11	12	13
16	17	18	19	20
23	24	25	26	27
30	31			

APRIL				
M	T	W	T	F
		1	2	3
6	7	8	9	10
13	14	15	16	17
20	21	22	23	24
27	28	29	30	

MAY				
M	T	W	T	F
				1
4	5	6	7	8
11	12	13	14	15
18	19	20	21	22
25	26	27	28	29

JUNE				
M	T	W	T	F
1	2	3	4	5
8	9	10	11	12
15	16	17	18	19
22	23	24	25	26
29	30			

- Employee Planning (no school for students)
- Schools and Administrative Offices Closed
- Schools Closed
- Report Cards Issued
- Interim Reports Issued
- Early Release Day
- First and Last Day of School

Severe Weather Make-up Days: 10/10/25, 12/19/25, 3/12/26, 5/22/26 & 6/3/26