

# STAPLES HIGH SCHOOL THEATER LOADING GALLERY

70 NORTH AVENUE, WESTPORT, CT 06880

ISSUED FOR BID	100% DESIGN SET	ISSUED FOR	DATE	PAGE	SHEET	TITLE
●	●			1	T-000	COVER SHEET
○	●			2	S-000	GENERAL NOTES
○	●			3	S-001	OVERVIEW
○	●			4	S-002	DETAILS

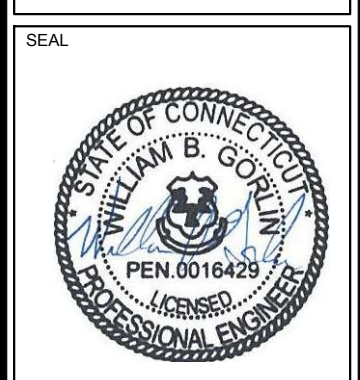
### DRAWING LIST

- ISSUED - NEW SHEET
- ISSUED - REVISION MADE
- ISSUED - NO REVISION MADE
- ⊗ SHEET REMOVED

NO.	DATE	ISSUED FOR BID	REVISION	BY
	7/23/25			

**McLaren**  
ENGINEERING GROUP  
McLaren Technical Services, Inc.  
530 Chestnut Ridge Road  
Westport Lake, NJ 07097  
Tel: 201.773.6000 www.mclaren.com

PROJECT  
**STAPLES HIGH SCHOOL  
THEATER LOADING  
GALLERY**  
70 NORTH AVENUE, WESTPORT, CT 06880



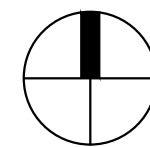
SHEET TITLE  
**COVER SHEET**

PROJECT NO. 241076  
SCALE AS NOTED  
DATE 10/14/2024  
DRAWN BY KMD/DLM  
CHECKED BY MBS/WBG

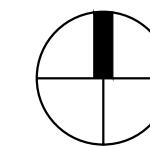
DRAWING NO.  
**T-000**  
1 OF 4 SHTS



SITE LOCATION  
N.T.S.



KEY PLAN  
N.T.S.

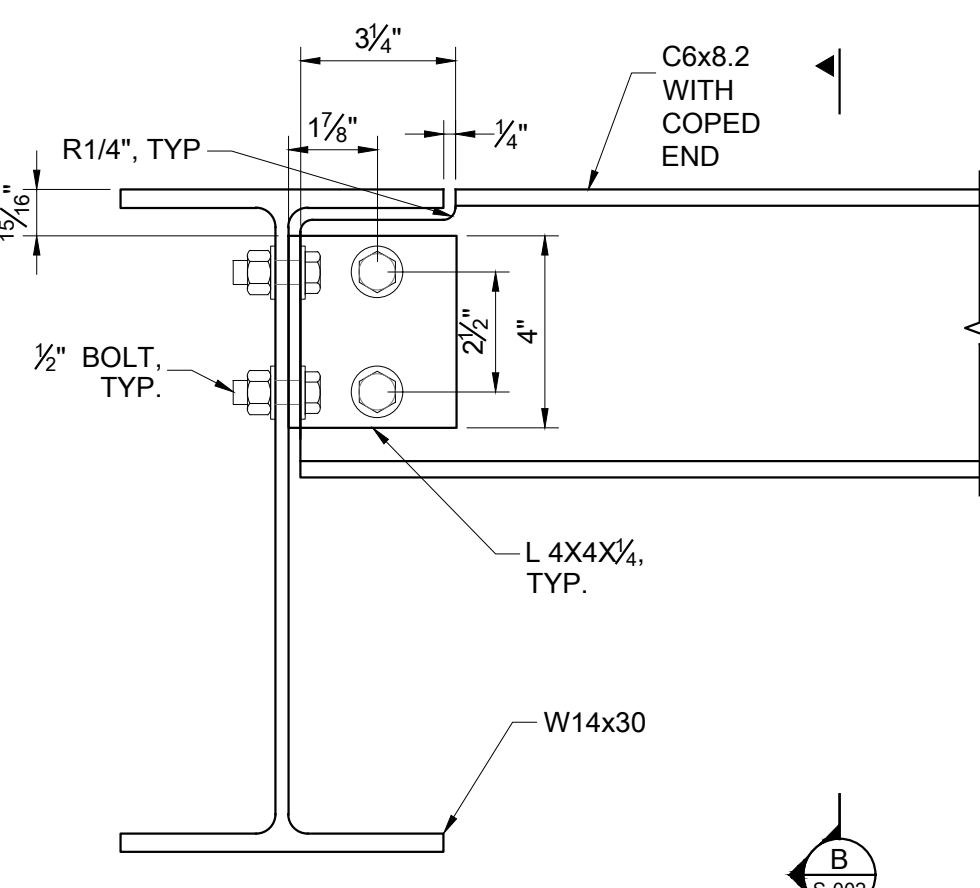


ISSUED FOR BID  
JULY 17, 2025

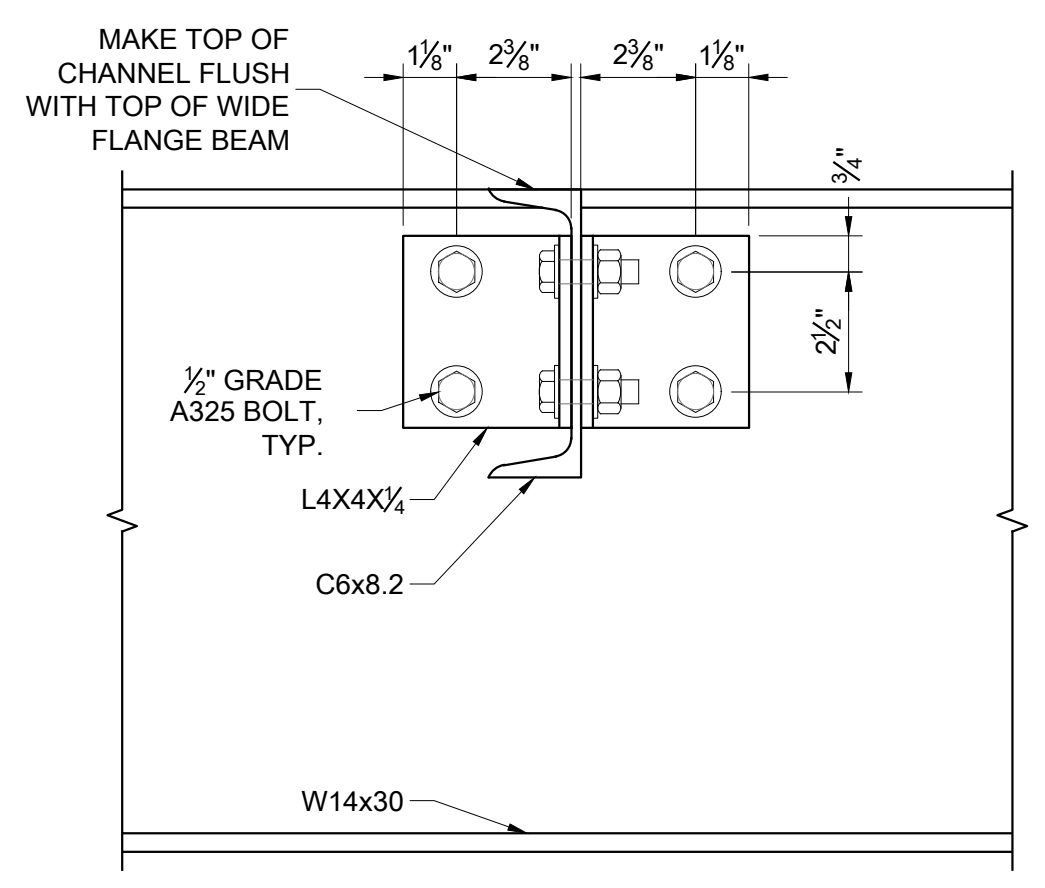




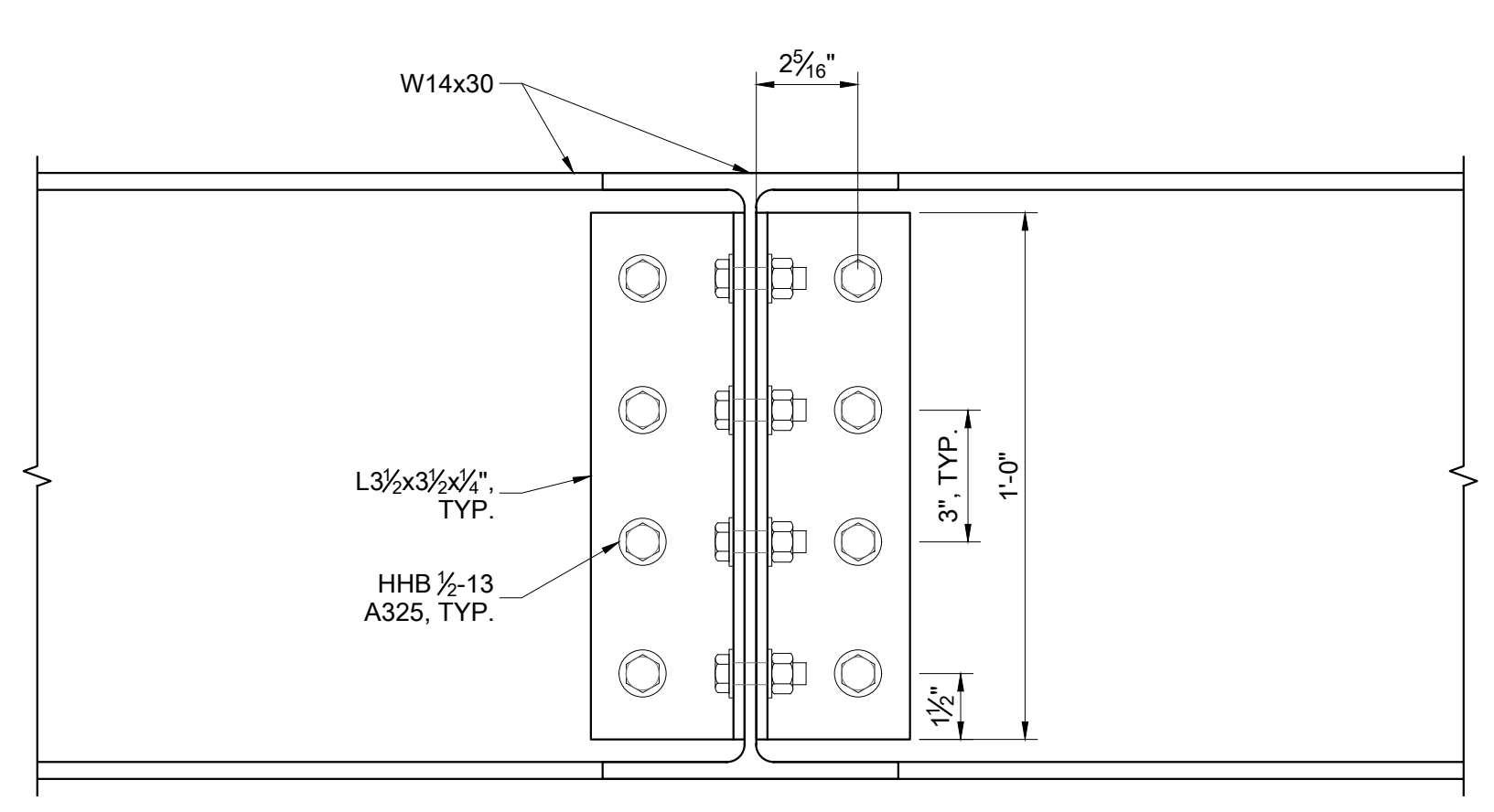
FILE NAME: P:\P0240241076\10\_Dwg\CADD\241076 DRAWING SET.dwg PLOT TIME: Thursday, July 17, 2025 - 10:05 AM BY: Murphy



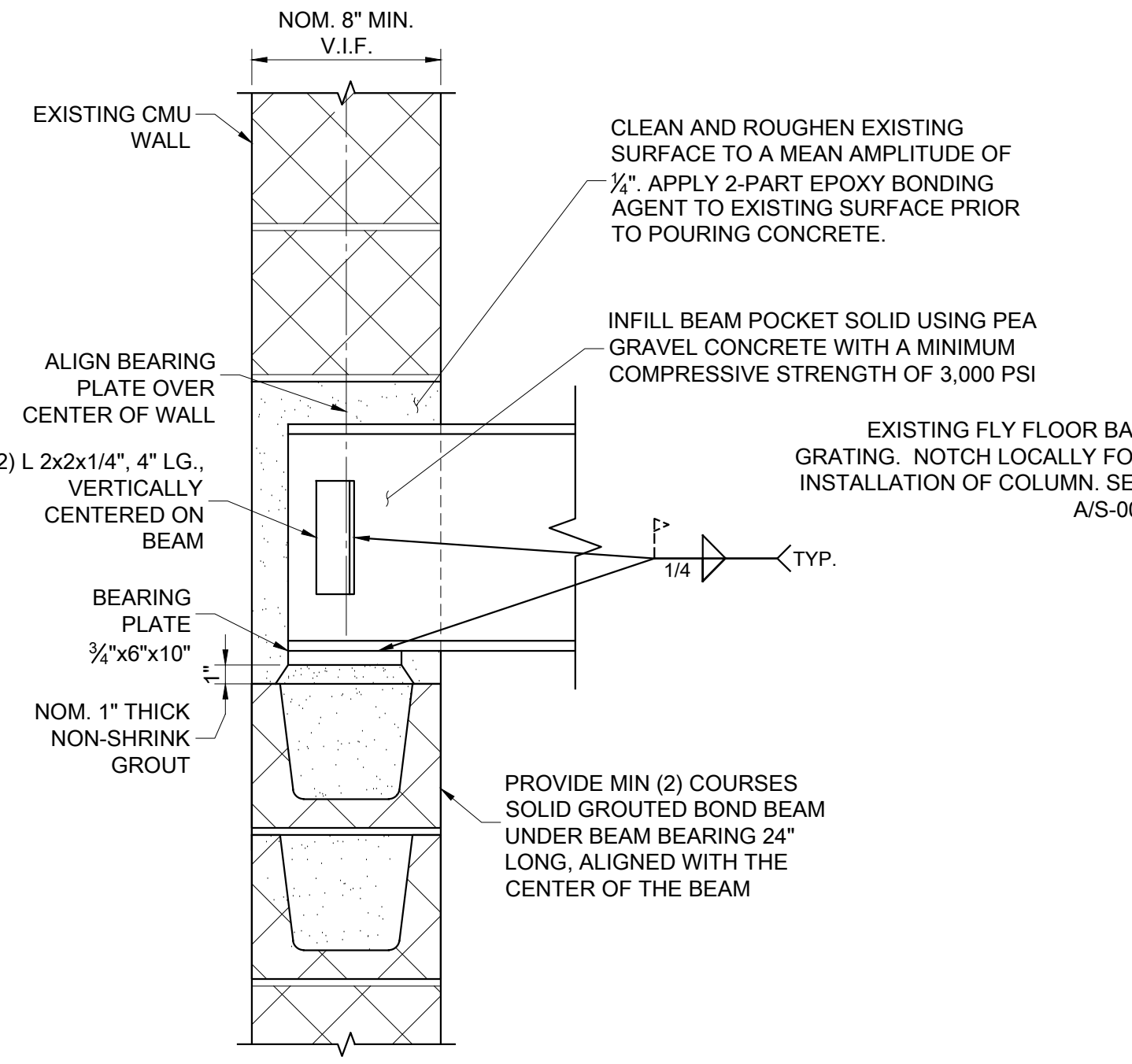
**A**  
CHANNEL TO BEAM  
TYPICAL CONNECTION  
S-002 3" = 1'-0"



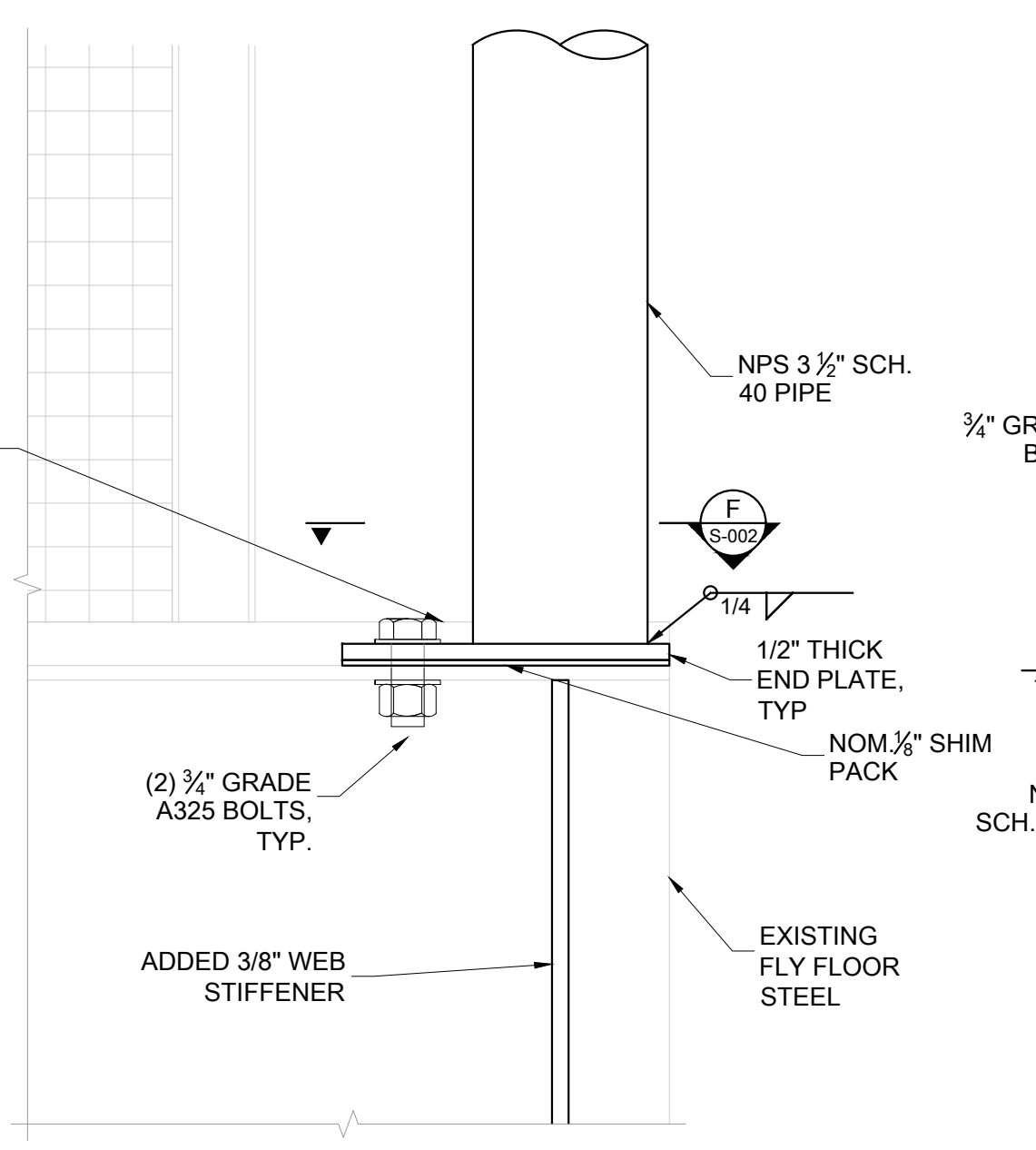
**B**  
CHANNEL TO BEAM  
SIDE VIEW  
S-002 3" = 1'-0"



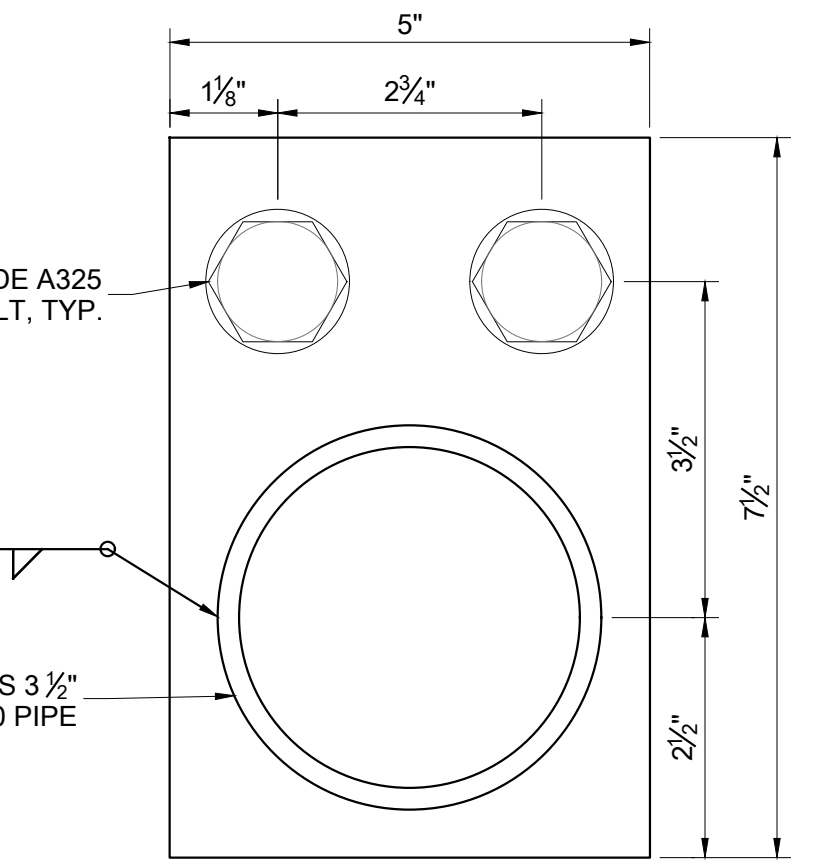
**C**  
TYPICAL  
BEAM TO BEAM CONNECTION  
S-002 3" = 1'-0"



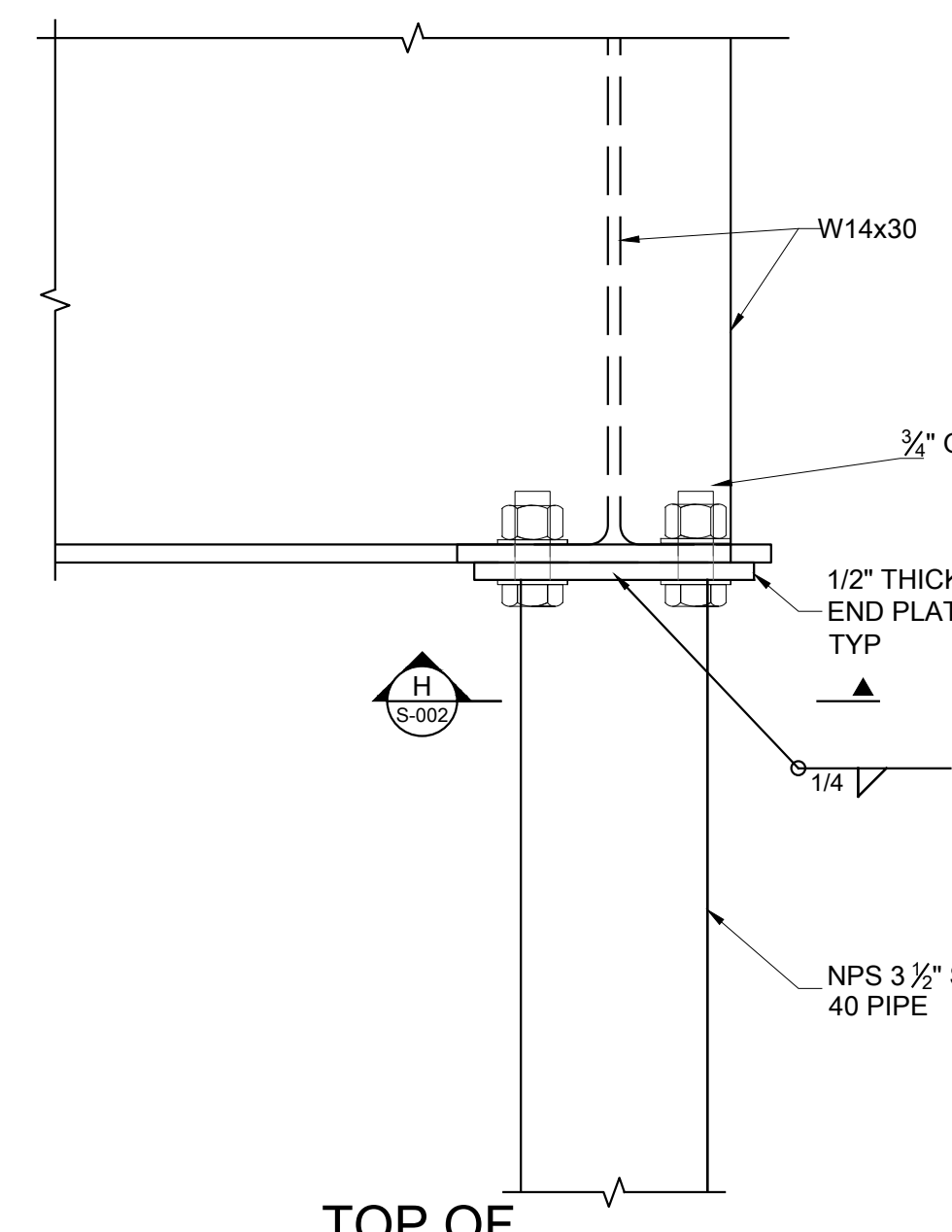
**D**  
TYP STEEL BEAM  
ON CMU WALL DETAIL  
S-002 1-1/2" = 1'-0"



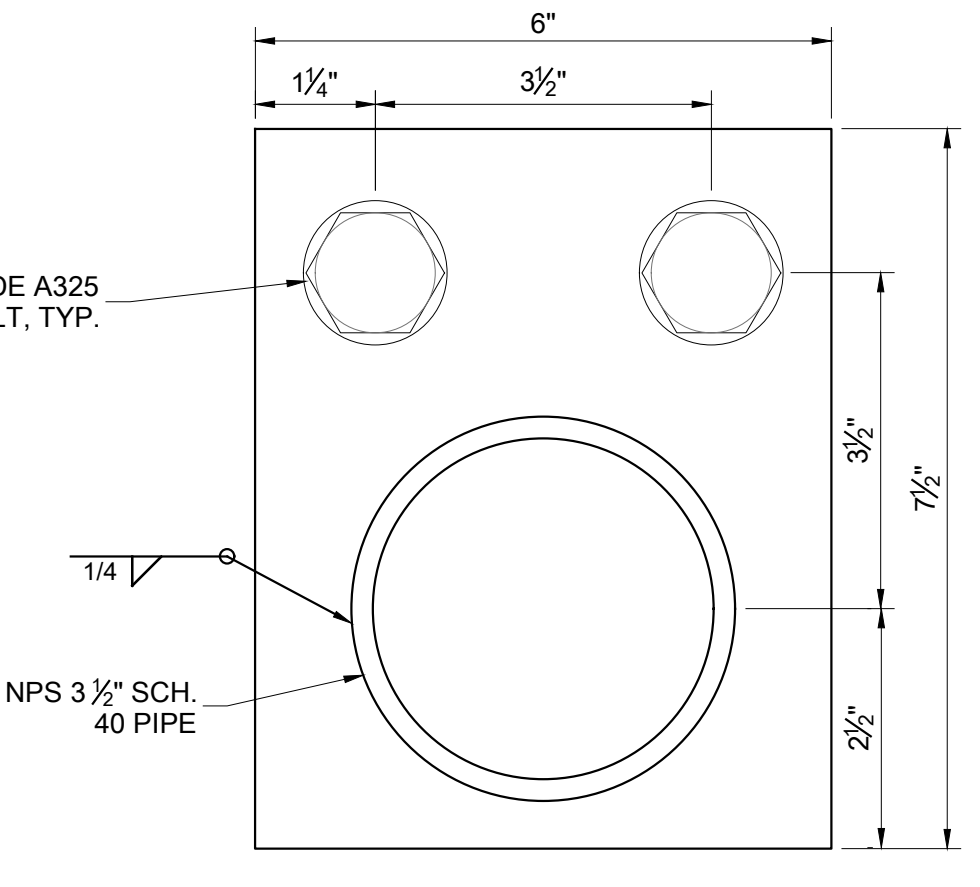
**E**  
BOTTOM OF  
COLUMN CONNECTION  
S-002 3" = 1'-0"



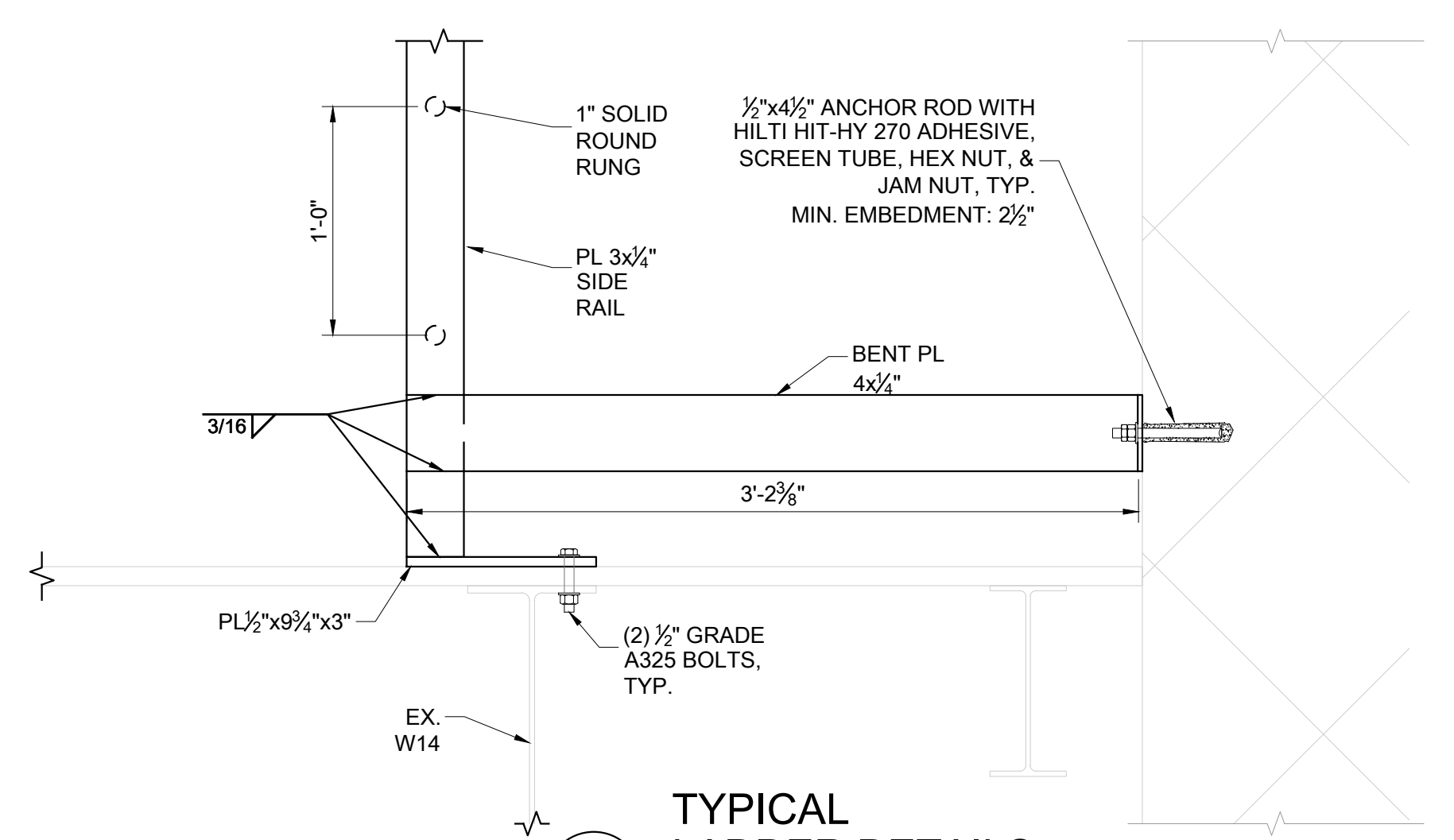
**F**  
LOADING GALLERY COLUMN TO  
FLY FLOOR CONNECTION  
S-002 6" = 1'-0"



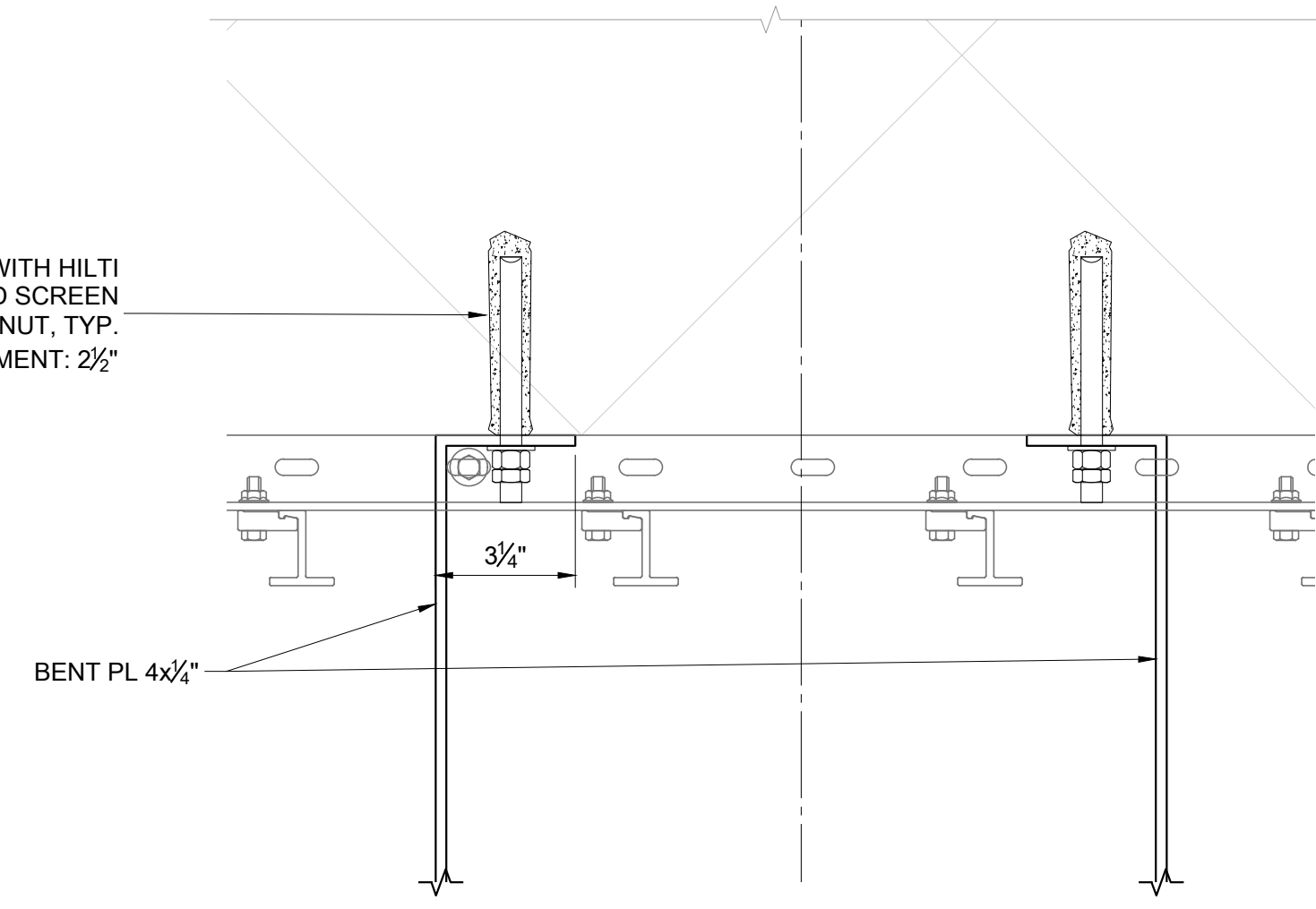
**G**  
TOP OF  
COLUMN CONNECTION  
S-002 3" = 1'-0"



**H**  
LOADING GALLERY COLUMN TO  
LOADING GALLERY CONNECTION  
S-002 6" = 1'-0"



**J**  
TYPICAL  
LADDER DETAILS  
S-002 1-1/2" = 1'-0"



**K**  
PLAN VIEW  
LADDER DETAILS  
S-002 3" = 1'-0"

NOTE: COORDINATE LADDER  
PLACEMENT WITH EXISTING TEE  
RAILS SUBJECT TO LOCATION  
DIMENSIONS IN B/S-001

ISSUED FOR BID  
JULY 17, 2025

NO.	DATE	ISSUED FOR BID	BY
7/23/25			

**McLaren**  
ENGINEERING GROUP  
McLaren Technical Services, Inc.  
530 Chestnut Ridge Road  
Westport, CT 06880  
T: 201.773.6000 www.mclaren.com

PROJECT  
**STAPLES HIGH SCHOOL  
THEATER LOADING  
GALLERY**  
70 NORTH AVENUE WESTPORT, CT 06880



SHEET TITLE  
**DETAILS**

PROJECT NO.	241076
SCALE	AS NOTED
DATE	10/14/2024
DRAWN BY	KMD/DLM
CHECKED BY	MBS/WBG
DRAWING NO.	S-002

4 OF 4 SHTS