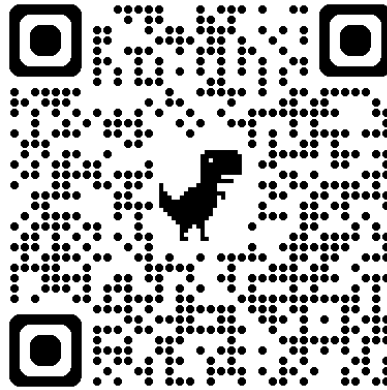




The research is clear and consistent.
Parent, family, and community involvement in education correlates with higher academic performance and school improvement.

WHAT IS TITLE I, PART A

Scan the QR code below for the
Parent and Family Connection
Newsletter



For additional questions or program
feedback contact

Jill Vasquez
Director of Special Services
972.429.2385
jill.vasquez@wylieisd.net



A PARENT'S GUIDE TO

Title I, Part A

How Can I support my child?

Parent involvement is essential to each child's academic success! There are many ways for you to be actively involved in your child's education.

Communicate

Stay informed and respond promptly to all communication from the school or district.

Be an example

Show your child that education is important by reading, attending conferences, and attending school events.

Volunteer

Volunteer at your child's school and help with extra-curricular activities. Participate and support parent involvement activities at school.

Learn

Find ways to help your child with classwork, homework, and future education plans.

Get involved

Join school/parent organizations, school improvement teams, parent advisory councils, and other parent committees.

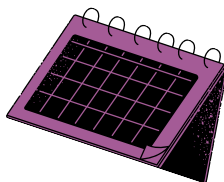
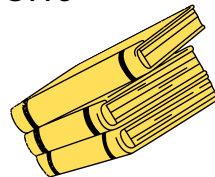
Collaborate with the community Participate in parent activities with other families.

Know and use the local community resources (e.g. public library, community center) to increase skills and talent.



Title I, Part A Goals

- Increase academic achievement
- Provide direct instructional support to students
- Provide professional development to teachers
- Promote parent education and involvement



What is Title I, Part A?

Title I, Part A is a federal program designed to improve students' academic achievement. Money granted is used for a variety of services with may include additional teachers and support staff, extra time for instruction, instructional materials and learning experiences, and additional training for staff.

How are schools identified?

Schools qualify for funds based on economic need.

Which students receive the benefits?

Wylie ISD utilizes a schoolwide program, which allows all children on the identified campuses to receive the benefits of Title I.

Which campuses are Title I?

The needs are assessed each year. Currently, the following campuses receive additional support:

- Achieve Academy
- Birmingham Elementary
- Cox Elementary
- Dodd Elementary
- Groves Elementary
- Hartman Early Childhood Learnign Center