

# Nutrislice: Charlotte Catholic's Digital Menu Program

Students and parents will have easy access to menus via Nutrislice, a digital menus experience platform with online and mobile menus, online ordering capabilities and more!



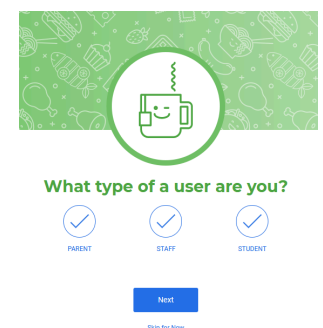
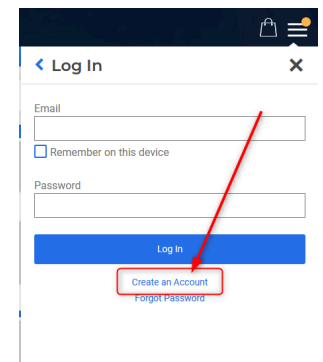
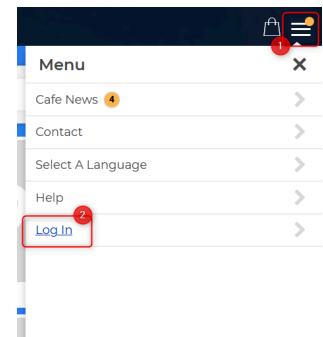
## To create an account follow these steps:

1. Search for Charlotte Catholic High School on the Nutrislice website via [lookup.nutrislice.com](http://lookup.nutrislice.com) or the Nutrislice app.
2. Once you have found Charlotte Catholic High School's Nutrislice website, click on the menu icon (three lines in the upper right corner of your screen).
3. Select Log In.

*Note: Organizations that do not have Ordering will not have the option to Log In.*

4. Underneath the login fields, there is a link to Create an Account. Select this option to begin creating your Nutrislice account.
5. Select the user type for your account. This page will not appear if your organization only has a single account type available.

*Note: If your organization has a Parent option available, setting yourself as a Parent user will allow you to add more than one student to your Nutrislice account.*



# Nutrislice: Charlotte Catholic's Digital Menu Program

Students and parents will have easy access to menus via Nutrislice, a digital menus experience platform with online and mobile menus, online ordering capabilities and more!



## To create an account follow these steps (continued):

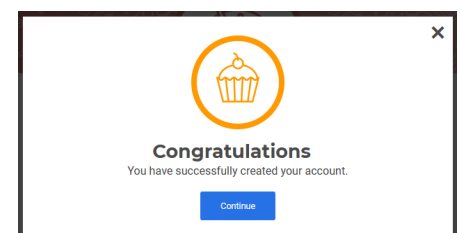
6. Enter the First Name, Last Name, and Email Address you would like to have connected to your account. You may be asked for additional information depending on your organization's requirements.

*Note: If you are setting up a Parent account, you will be prompted to fill out your student's profile, and add additional students.*

7. Once your account information has been entered, you will need to select a password for your Nutrislice account.

8. Once your password has been selected and re-confirmed, click the Finish button to finalize your account.

9. Congratulations! Your Nutrislice user account is set up. You can navigate to your organization's menu website and place an order.

A screenshot of the "Tell us about yourself" registration form. It features a header with a bowl of food icon. The form has three input fields: "First Name \*" with "Rebecca" entered, "Last Name \*" with "Johnson" entered, and "Email Address \*" with "xxxxxxxxxxxxxx@gmail.com" entered. Below the fields are "Previous" and "Next" buttons, and a "Skip for Now" link.A screenshot of the "You're almost done!" registration form. It features a header with a bowl of food icon. The form has three input fields: "Email Address" with "xxxxxxxxxxxxxx@gmail.com" entered, "Password" with "\*\*\*\*\*" entered, and "Confirm Password" with "\*\*\*\*\*" entered. Below the fields are "Previous" and "Finish" buttons, and a "Skip for Now" link. A small text at the bottom states: "This site is protected by reCAPTCHA and the Google Privacy Policy and Terms of Service apply."

**Charlotte Catholic High School's Nutrislice:**  
**[www.charlottecatholic.nutrislice.com](http://www.charlottecatholic.nutrislice.com)**