

Page Elementary School
Family Handbook
Student Policies and Procedures
2025-2026 School Year

(928) 608- 4200

P.O. Box 1927
Page, Arizona 86040

Table of Contents

Section I

Letter from Principal

Vision/Mission

Lunch Schedule

Calendar

Contact Information

Student Responsibilities

Parent Responsibilities

General Information

Section II

Attendance

Navajo Nation Truancy

Discipline / Behavior

Section III

Technology

Movie Policy

Audio/video recording language

Section IV

Signature Page

SECTION I

Letter from the Principal

Dear students, parents, and guardians,

Welcome to a new school year! I look forward to learning and growing with you and your Page Elementary School Dust Devil. As you know, learning doesn't just happen in the classroom. Our children are learning all the time through the experiences that the school provides them and through the experiences that you provide them. Encourage your child's curiosity and natural desire to learn by allowing them to ask questions, to make mistakes, and to reflect. Talk to your child about being a learner. Help them to understand that Page Elementary School is one important part of their learning journey. This is where they will learn the foundational skills in reading and math, and build habits that will enable them to be successful in their future.

Please remember that attending school every day is an important aspect of your child's learning journey. We need you to make sure your child comes to school every day. This is the first step to building a strong learner.

The information in this handbook will make learning easier for all of us by explaining our school practices. Take some time to read through this handbook and review it with your child.

If you have any questions, comments, concerns, or suggestions, feel free to reach out to me.

Sincerely,

Mary Stahl, Page Elementary School Principal
mstahl@pageud.org

Governing Board Members: Desiree Fowler, Chris Benally, Bunny Cochran, Mike Mangum, Renee Tsosie, and Dr. Bryce Anderson, Superintendent

PAGE UNIFIED SCHOOL DISTRICT VISION

Page Unified School District is a community of learners who direct our collective actions and resources towards the unique learning needs of every child in order for all students to become college and career ready and successful in a global society.

PAGE UNIFIED SCHOOL DISTRICT MISSION

Our Schools are passionate about the learning-for-all mission and understand that every student matters. We are responsible and accountable for the education of every student that walks through our doors every day.

PAGE UNIFIED SCHOOL DISTRICT MOTTO

Collectively committed to every student, every day, every minute.

Lunch Schedule

If your child is transferred to another class, we will contact the parent or guardian and inform them of this change.

Contact Information

Page Elementary Main Office Phone Number: 928-608-4200

Mary Stahl, Principal: 928-608-4219, mstahl@pageud.org

Wendy Gilbert, Assistant Principal: 928-608-4191, wgilbert@pageud.org

Michelle Pugh, Administrative Assistant: 928-608-4202, mpugh@pageud.org

Maxine Benally, Registrar: 928-608-4215, mbenally@pageud.org

Darlisa Tsinnie, Attendance Clerk: 928-608-4215, dtsinnie@pageud.org

Brandon Hanks, Counselor: 928-608-4206, bhanks@pageud.org

Lisa Redman, Counselor : 928-608-4206, lredman@pagud.org

Tito Hoover, Behavior Interventionist: 928-608-4203, thoover@pageud.org

Tatyanna Begay, Behavior Interventionist: 928-608-4203, tbegay@pageud.org

Teena Manson, Nurse: 928-608-4207, tmanson@pageud.org

Sharon Watson, Director of Student Services: 928-608-4152 swatson@pageud.org

Superintendent's Office: 928-608-4100

Lorraine Allen, Indian Education, Administrative Assistant: 928-608-4286

Transportation: 928-608-4131

Student Responsibilities

To assist you and others in the pursuit of a quality education, we have established some guidelines for student behavior. These guidelines are based on existing policies and procedures of the school district and are designed to create a pleasant and safe environment for all students in our schools.

Your positive attitude toward school and daily attendance play a large role in determining how well you do in school. Your primary purpose for coming to school should be to learn and grow through classroom and extracurricular activities so that you can become College and Career Ready.

You must remember that you are responsible for your own choices and actions. If your actions are in violation of school guidelines, you will have to accept the consequences. You should also understand that Arizona law allows the school district to hold you accountable for your behavior on school property, on the way to and from school, during any school sponsored activity, at school bus stops, and in other locations outside school grounds if the behavior has a negative impact on other students, teachers, staff or school activities. The Dust Devil Way and the discipline policy later in the handbook describe the guidelines for student behavior. You may, at any time, be counseled by teachers or administrators regarding your behavior. Please accept this advice as valuable and understand that it is intended to help you.

We are proud of our district and the opportunities provided to students. We sincerely hope you will take advantage of the many programs and strive to become College and Career Ready. All students must obey the rules and regulations as outlined for them while they are in school.

Parents as Partners

You are your child's first and most important teacher. It is both your right and your responsibility to take an active role in your child's education. Page Elementary encourages your participation. You are always welcome to visit your child's classroom. It is the best way to know what is being taught and learned and how your child interacts with the teacher and other students. We do require that you check in at the office to ensure the opportunity to help you in any way we can.

Parent's Rights:

- Parents have the right to be informed of their minor child's academic performance and social behavior.
- Parents have the right to be informed of school regulations.
- Parents have the right to visit the school.
- Parents have the right to expect that the school will fulfill its responsibility for the educational, social, and general welfare of their child.
- Parents have the right to expect courtesy from all school district employees.
- Parents have the right to check out their child from school when they feel it is in the best interest of their child.

Parent's Responsibilities and Duties:

- To encourage, help guide their child in following all school rules and regulations.
- Parents have the responsibility to cooperate and be courteous with school officials in resolving problem situations involving their child.
- To participate in the school's Parent Teacher Conferences and school activities.
- Schedule daily homework time, review it regularly, and discuss what their child has learned.
- Encourage their child to read.

- Keep in contact with the school by school visits, phone calls, letters, and attendance at parent-teacher conferences, and enrolling on PowerSchool Parent.
- Maintain high expectations of their child by praising his/her achievement at school, providing a warm, caring home, emphasizing school, and encouraging academic success.
- Ensure their child is on time and in school everyday, in accordance with Navajo Nation Truancy Law 10 NNC 118, 502, 503 and Arizona Revised Statute §15-521.
- Encourage their child to be responsible for his/her actions.
- Keep their child's school records up to date.

Site Council

The Page Elementary Site Council is made up of teachers, parents, community members, and other staff. The meeting schedule will be established and posted. All meetings will follow the Arizona laws pertaining to open meetings. Parents and staff are encouraged to attend and to communicate with the site council members.

GENERAL INFORMATION

Enrollment Exceptions

A pupil who has been expelled by any school district in this state or who is not in compliance with a condition of disciplinary action imposed by any other school or school district or with a condition imposed by the juvenile court shall not be admitted. Acceptance for enrollment may be revoked upon finding the existence of any of these conditions. Schools have the right to conduct a background check of any disciplinary action, academic status, and attendance.

Closed Campus

Page Elementary is a closed campus. Students are not allowed to leave campus unless properly checked out in the main office by parent/legal guardian.

Early Checkouts

All student checkouts must be done by authorized adults in the front office using the proper checkout form. Authorization means the adult is listed on the student's check-out list, is able to show proof of identification, and is over the age of 18. School personnel need to verify the identity of authorized adults for checkouts. Students are not allowed to leave the school campus during school hours for any reason without the knowledge and consent of a school authority. Permission to leave the school grounds will be granted only upon written request of the parent/guardian. We ask that students are checked out before 3:25.

Going Home Changes

All changes must be reported to the office by 2:00.

Visitors

Parents or legal guardians are welcome to visit Page Elementary. Page Unified School District requires all visitors to report to the office, sign in for clearance, and acquire a visitor's pass. All visitors must be respectful. Visitors may be asked to leave or be escorted off the school grounds if there is a safety or security issue.

Lost and Found

Lost and found items are placed in the

Playground Usage

General public is not allowed on our playgrounds between the hours of 7:30am – 4:40 pm Monday-Thursday from the first day to the last day of school unless permission is given by the Principal. Due to the lack of supervision, students are not allowed on the playground after school. Students who choose to use the playground after 4:00pm and/or on weekends/holidays do so at their own risk.

Electronic Items

Cell Phones, tablets, headphones, personal laptops, any other electronic devices: School staff will not conduct any searches or investigations for lost or stolen electronic items regardless of cost or amount. The school is not responsible for replacing lost, damaged or stolen electronic items. Phones will be silenced and kept in the student's backpack during class. During state and district benchmark testing, ALL personal electronic devices will not be allowed in the testing environment.

The video or audio recording of any person(s) on school or district property and or distribution of any audio or video recording of any person(s) is not permitted without express written permission from school administration and is only permitted for school related activities.

Withdrawing Students

Parents are required to sign a withdrawal form when students are going to change schools. At the time of withdrawal all school materials must be returned (i.e. textbooks, library books) and outstanding bills paid. Student's records will be forwarded to the new school upon written request from the school.

Meal Program

Page Elementary provides breakfast and lunch free of charge for all students.

Health and Safety

Please stress the importance of all phases of safety to your child. School rules apply on the way to and from school.

- Report home (or designated location) at a time set by parents
- Cross at crosswalks only
- Stay away from any stranger offering a ride or treats.
- Bicycles, scooters, and skateboards must be walked on school grounds.
- "Heelys" or roller shoes are not allowed at school.

Nurse Services

It is very important for children's academic success that they attend school regularly. Prompt assessment at home and treatment for illness can help limit extended absence. If your child is injured or becomes sick at school, we will notify you so that you, or a person designated by you, can take your child home. It is very important that we have your current telephone number at home and at work, as well as the number of a friend or relative for emergency contact. If, in an emergency situation, we are unable to reach you or your designee, paramedic/ambulance services will be requested. Families will be responsible for the cost of paramedic/ambulance services.

Medication

If your child needs to take medication at school, please contact the nurse for the proper form for your written permission to administer it. All medication sent to school must be in the original container and delivered to the nurse for proper locked storage. No medication will be administered without a signed permission slip.

Immunization Laws

State Law requires that all children be completely immunized before attending school. Arrangements for immunizations can be made with your family physician or the county health department.

Children who have not been immunized will be excluded from school in the event of an epidemic. Special forms, available in the office, must be completed for exception to the immunization requirement.

Effective January 1, 1992, a stronger state immunization law requires that we suspend from school any child whose immunization record is not up-to-date (A.R.S.§15-873). This new law is in response to the large increase in vaccine-preventable disease in Arizona. You will be notified by our office if your child's medical records are not in compliance with the law.

Parking Lot Drop Offs

Students must be dropped off in the designated area. Observe all posted signs and speed limits. Do not drop students off in the bus loading and unloading zones. 7:30 am is the earliest that students can be dropped off.

GUIDELINES FOR BUS USE

Riding the school bus is a privilege. Inappropriate behavior or abuse of activity bus privileges will result in disciplinary action which may include the **SUSPENSION OF THE PRIVILEGE OF RIDING THE SCHOOL BUS**. It would then become the responsibility of the parents/guardians to provide transportation to school. The primary responsibility of the school bus driver is to make sure students arrive and depart safely. Students must follow the directions of the school bus driver.

School bus passenger Rules:

- No food or drinks are allowed (this includes gum). Water is acceptable.
- Classroom behaviors apply.
- Bus driver will assign seats.
- Possession or use of drugs is prohibited.
- Remain properly seated “Bottom to Bottom, Back to Back, Feet to Floor” keeping aisles clear.
- Do not use profane or obscene language.
- Keep all parts of your body inside the bus at all times.
- Talk quietly. Do not yell or make other loud noises.
- Respect the rights, property and safety of others.
- Do not destroy property. You will be responsible for the cost of repairs.

- Fighting will result in immediate revocation of bus riding privileges pending a parent conference.
- Do not distract the bus driver, as you are jeopardizing the safety of others.
- Musical instruments and skateboards must be under your control at all times while not occupying a seat.

Student behavior on a school/activity bus should be the same as that in a well-ordered classroom with the exception that students are free to talk in a low voice. Disorderly conduct or refusal to respect the authority of the driver shall be sufficient reason for the student to receive a discipline referral. This includes transportation to and from school, athletic/activity school events, field trips, and the late bus.

When unsafe, inappropriate or unacceptable behavior occurs on the bus, the bus driver will issue a referral and refer the student(s) to the office. School officials will enforce policy when taking the following action:

- On the first incident, the driver will verbally reprimand and explain the violation.
- If the violation is repeated, the incident will be investigated and the proper disciplinary actions will be taken.
- Any serious violation may result in an immediate long-term suspension from bus privileges on the first referral.

Major incidences or multiple incidences and referrals can result in suspension or revocation of bus privileges. Students whose transportation privileges have been revoked are still expected to attend school on a regular basis, and it is the parent’s responsibility to provide such transportation. Good citizenship does not stop at the bus door. Reference ARS 15-341 EEAE bus safety/ JIC- student conduct.

Students who do not attend one or more classes due to truancy may be denied access to bus transportation that day. Students who misuse school transportation may receive disciplinary consequences.

Selling/Trading

DISCLAIMER: IT IS INTENDED THAT ALL PAGE UNIFIED SCHOOL DISTRICT HANDBOOKS COMPLY WITH THE POLICIES ESTABLISHED BY THE GOVERNING BOARD OF THE PAGE UNIFIED SCHOOL DISTRICT. IN THE EVENT THAT ANYTHING IN THIS HANDBOOK CONFLICTS WITH CURRENT DISTRICT POLICY, DISTRICT POLICY WILL PREVAIL.

Students are not allowed to sell or trade candy or other items at school (including trading cards), other than for a school-sponsored project.

District Substance Abuse Policy

Substance abuse infractions are rare at the elementary level in the Page Unified School District. However, it is important for parents and students to know that mandatory policies and procedures exist for handling them if they should occur. Students must understand that school is a safe, drug-free environment and that use or possession of alcohol or other drugs is unacceptable.

School Campus and Playground Safety

- Students follow rules provided by teachers and safety directives on the playground.
- Bicycles, skateboards, roller blades, and scooters are not permitted to be used on Page Unified School District grounds.
- Students are on school rules from the time they leave their parents' homes until they return to their parents' homes at the end of the day.

Compulsory Education

A parent/and or legal guardian, having custody over a school-aged minor is required under State law to enroll and send said child to public school, established private school or enroll in home-schooling during the school year of the district in which the minor resides. The process of education requires continuity of instruction, class participation and study. Frequent absences from classes disrupt the instructional process. Parents/guardians are encouraged to work with the school in promoting regular attendance of all students.

Report Cards

Page Elementary report cards are completed quarterly. Our grading and reporting is standards based. Our standards based report card is designed to clearly communicate what students have learned and to what degree they have learned the standards. With a standards based approach, teachers evaluate student learning using classroom observation, student's classroom work and assessments. The combination of these pieces of evidence when reviewed with parents provides a more detailed picture of student progress. Parent conferences are scheduled in October and March. However, anytime you have a question or concern, our teachers welcome additional conferences with parents. Benchmark assessments reveal students' progress in mastery of standards.

Homework

Homework is a part of a student's learning that increases their ability to master concepts. Homework may be assigned daily and required by each grade level.

Library Books

The use of the library is a privilege all our students enjoy. Like other privileges, there is also responsibility. Please help your children keep borrowed books clean and safe. Remind them to wash their hands before reading, do not fold or mark the pages and decide on a safe place to keep books so pets and young children cannot damage them. If a book is damaged or lost, the librarian will notify you so you can arrange for its replacement.

Recess & Outdoor Physical Activity

Fresh air and exercise is an important part of the school day. Time spent outdoors gives students the opportunity to engage in activities that allow them to relax from the structure of the classroom for a short while. When properly clothed, elementary school-aged children can participate in safe, vigorous play in an outdoor environment in most weather conditions.

- When temperatures fall below 30 degrees including the wind chill, students may be kept indoors (“feels like” temperature based on www.weather.com for zip code 86040).
- It is necessary for students to come to school wearing appropriate clothing for cold weather activities. It is the parent/guardian’s responsibility to ensure their children come to school dressed appropriately for the weather.
- Parents may request their child stay inside rather than play outside if the child should not participate in outdoor activities due to health. This request should be accompanied by a doctor’s note.

Inclement Weather

Call Emergency Weather Hot Line (928) 608-4100 (option 1)

District web Page Go to: <http://www.pageud.org>

DRESS CODE POLICY

Students and their parents/guardians have the responsibility to be aware of the school’s specific dress code and to conform to these requirements. If a student or parent has any questions about whether specific attire or accessories are in compliance with this dress code, they should contact an Assistant Principal prior to wearing such attire or accessory to ensure compliance.

On campus, the faculty, staff, and administration have the responsibility to interpret and enforce this policy. Each year parents ask for guidelines as they help students select appropriate attire for school. School pride, morale and image are influenced by the general appearance of students. PUSD wants to provide opportunities for students to express themselves within the set of parameters listed below:

The school is not responsible for the storage, inventory, or safekeeping of any confiscated item; this includes hats and electronic devices.

**** ALL RULES APPLY TO BOYS AND GIRLS****

APPROPRIATE DRESS:

Dressing in a manner that may result in a **distraction or disruption** of a safe environment is considered inappropriate. Attire that suggests involvement in gang activity or any apparel that is suggestive, obscene, lewd, shows vulgar language or symbols, or shows symbols or language relating to or promoting sex, drugs, tobacco, weapons, violence, or alcohol on clothing are prohibited. Students should realize that brief and revealing clothing are not appropriate in school. The following is a **general guide** that may be used in helping the student select appropriate clothing.

Minimum Dress & Grooming Code:

Tops:

- Tops that reveal bra straps, cleavage, bare midriffs or bare backs will not be allowed.
- Tops may not be see through.
- No tube or halter tops.
- No strapless tops.

Pants:

- Pants must be pulled up, with no undergarments exposed. May not have holes, rips or tears which expose undergarments.

Shorts:

- Must be fitted at the waist and conceal all undergarments.
- Must be at a reasonable and appropriate length.

Skirts, Dresses, Jumpers, Shirts, Sports Wear:

- Must be at a reasonable and appropriate length. No strapless dresses.

Headwear:

- Must not show any gang affiliation or inappropriate subject matter. Hoods are not to be worn in the building.

Miscellaneous:

- No attire with lettering or drawings which depict sexually suggestive expressions or actions, profanity, violence, weapons, obscenity, drugs, alcohol or tobacco shall be worn.
- Torn or radically altered clothing is not permitted.
- The school reserves the right to restrict clothing if it has become a symbol for gangs in the community and/or surrounding areas.
- Gang related symbols or insignias on books, caps, belongings or apparel are not allowed.
- No attire or adornments disruptive to the educational environment.

SECTION II

PAGE UNIFIED SCHOOL DISTRICT NO. 8 STUDENT ATTENDANCE PROCEDURES

Attendance

School attendance is very important. Children are required by Arizona Statute §15-802 and Navajo Nation Truancy Law (Title 10 N.N.C. §118, 502, 503) to attend school. Students who are absent miss out on educational, social, and physical development. Absences shall be excused only for necessary and important reasons such as: illness, bereavement, other family emergencies, and observances of family's religious beliefs. However, a sick child who is in school will also miss out, and if the child is contagious, it can be harmful to other students. If your child is running a fever, or has a contagious illness, please keep him/her at home. Students who have excessive absences may be subject to the following: disciplinary actions, parent notification, home visit; referral to tribal juvenile authorities, and/or social services ref. Title 17 N.N.C. §118, 222 and 223 and ARS §15-803. Any Navajo minor residing in the Navajo Nation who violates the provisions of this section shall be subject to the jurisdiction of the Family Courts of the

We are required by law to report the specific reasons for absences and we also are required to make a reasonable effort to contact parents if a child is absent without prior notice. If you know your child will be out prior to their absence, it is requested that you contact our office at 608-. If your child is absent unexpectedly, please send a note with your child upon his return to school so that our reporting procedures can be updated. An e-mail is also acceptable. Unreported absences will remain unexcused until the office receives a note from the parent or doctor. Please give the following information:

- Your child's first and last name
- Your child's teacher and grade
- The reason for the absence

TYPES OF ABSENCES

- Excused Absences: The following are examples of absences considered excused: illness/doctor's appointment/clinic visit; death in the family; religious ceremony; school activity; inclement weather; etc. (please see attendance monitor for more information)
- Unexcused Absences: The Arizona Department of Education states, if an absence occurs relating to any term or condition that is not specifically designated herein, the absence shall be counted as unexcused such as when a child comes to school with no documentation of absences; babysitting, missed the bus, or going to town, etc.

TARDINESS

It is important to be responsible and "on-time" during the school day when going to all of your classes. Loss of instructional time results in loss of learning and in the number of instructional hours required by the state of Arizona. Time lost from being late to class can be made up during the student's lunch time in the teacher's class. Unexcused tardiness to class will be handled within the classroom environment. Parents will be notified of excessive tardiness. Excessive tardiness may result in an intervention plan or disciplinary action as deemed appropriate. All students should arrive at school prior to the beginning of instruction.

1. Definitions:

- a. Absences for K-8 Students - is defined as a student not being present in his/her assigned classroom during the assigned period or an elementary student missing 25% or more of the school day.
- b. Absences for 9-12 (High School Students) - is defined as missing one period during the school day. No absence will be excused without the student first checking out at the school office and returning with written verification of an appointment (i.e., medical, dental, or legal). Upon return to campus, students must sign in through the front office.
- c. Cumulative Absences - the total number of days or class periods missed in a school year.
- d. Consecutive Absences - series of days or class periods in a row when a student is absent.
- e. Emancipated Students - Eighteen-year-old students may assume the responsibility of notifying the school of an absence with approval of the administration and appropriate emancipation documentation.
- f. Truant - an unexcused absence for at least 25% of the day for grades K-8 or one class period for 9-12.
- g. Habitually truant - a child who is truant for at least five school days within a school year. (A.R.S. 15-803).
- h. Truant child - a child who is between six and sixteen years of age and who is not in attendance at a public or private school during the hours that school is in session, unless excused as provided by law.
- i. Excused absence - an absence approved by the building principal or designee. All other absences are unverified and constitute truancy. Excused absences include but are not limited to: individual illness or health conditions, serious illness in the immediate family (documentation required), religious holidays, death in the immediate family, school sanctioned activities, and medical or dental appointments (documentation required).
- j. Unverified Absence - is any absence for at least 25% of the day for grades K-8 or from one or more class periods 9-12, which has not been verified by a parent or guardian or excused. Students absent for 10 (ten) consecutive days, except for excused absences identified herein, shall be withdrawn from the school effective the last day of attendance or reported unexcused absence, pursuant to A.R.S. 15-901(a).
- k. Excessive (Chronic) absenteeism - Absences may be considered excessive when the number of absent days exceeds ten percent of the number of required attendance days. (A.R.S., 15-803).
- l. Religious Purposes - Pursuant to A.R.S., 15-806(A) Students may be granted release time to attend religion classes near the school campus. Specific to religious purposes, pursuant to A.R.S. 15-806(A)(1-2), these conditions will include a written consent from the person who has legal custody of the student

and said religious exercises must take place at a suitable place away from school property.

- m. Withdrawals - includes students formally withdrawn from schools and students absent for ten consecutive school days, except for excused absences as identified by the department of education. For computation purposes, the effective date of withdrawal shall be retroactive to the last day of actual attendance of the student.
- n. Verified Absences - When a student is absent, parents are required to call/send a note to the attendance department in order to validate the reason for your child's absence. We call this process "Absence Verification." Parents are encouraged to call in on or prior to the day of the absence to make the school aware. An absence must be verified within three school days.

2. Procedures:

- a. Full day or class period unverified absences - auto phone call and email for each absence
- b. Four full day or class period with unverified or verified absences - When a student reaches four (4) cumulative unverified or verified absences, they will receive the 4-Day Absence Warning Letter. The parent/guardian will receive the letter and a survey via email (or U.S. Mail if email is not available).
- c. Six (6) cumulative unverified or verified absences - When a student reaches six (6) unverified or verified absences, they will receive the 6-Day Absence Final Warning Letter. The parent/guardian will receive the letter via email (or U.S. Mail if email is not available). The student will be referred to administration for excessive absenteeism. An attendance meeting will be scheduled with building administration and documentation for absences requested. An attendance contract will be issued.
- d. 8+ Absences - Once a student reaches 8 or more cumulative unverified or verified absences, the student will be referred to a district attendance hearing. The city attorney's office or Navajo Nation Peacemaking court will be contacted, pursuant ARS 15-803; Navajo Nation 10-NNC503.

Consecutive Absences

- a. Student Support Services will call the parents/guardians when a student has reached four full day consecutive(4) absences.
- b. There will be a home visit conducted by Student Support Services when a student reaches eight (8) full day consecutive absences.
- c. 10 Consecutive Absences - After 10 consecutive days of absences per semester, the state requires schools to automatically withdraw the student.

2. "Truant" means an unexcused absence for at least one class period during the day.
3. "Truant child" means a child who is between six and sixteen years of age and who is not in attendance at a public or private school during the hours that school is in session, unless excused as provided by this section.

ARS 8-304, 203 & 901

1. **8-304. Investigation of alleged acts of delinquency, dependency and incorrigibility**
 - a. The law enforcement officer having jurisdiction in the place in which an act of delinquency or incorrigibility is alleged to have occurred is responsible for the complete investigation surrounding the alleged commission of the act.
 - b. A department investigator is responsible for the complete investigation of all complaints of alleged dependency, and a criminal conduct allegation shall be investigated in cooperation with the appropriate law enforcement agencies and according to the protocols established pursuant to section 8-817. The department shall be responsible for the disposition of such a child unless the matter requires the intervention of the court.

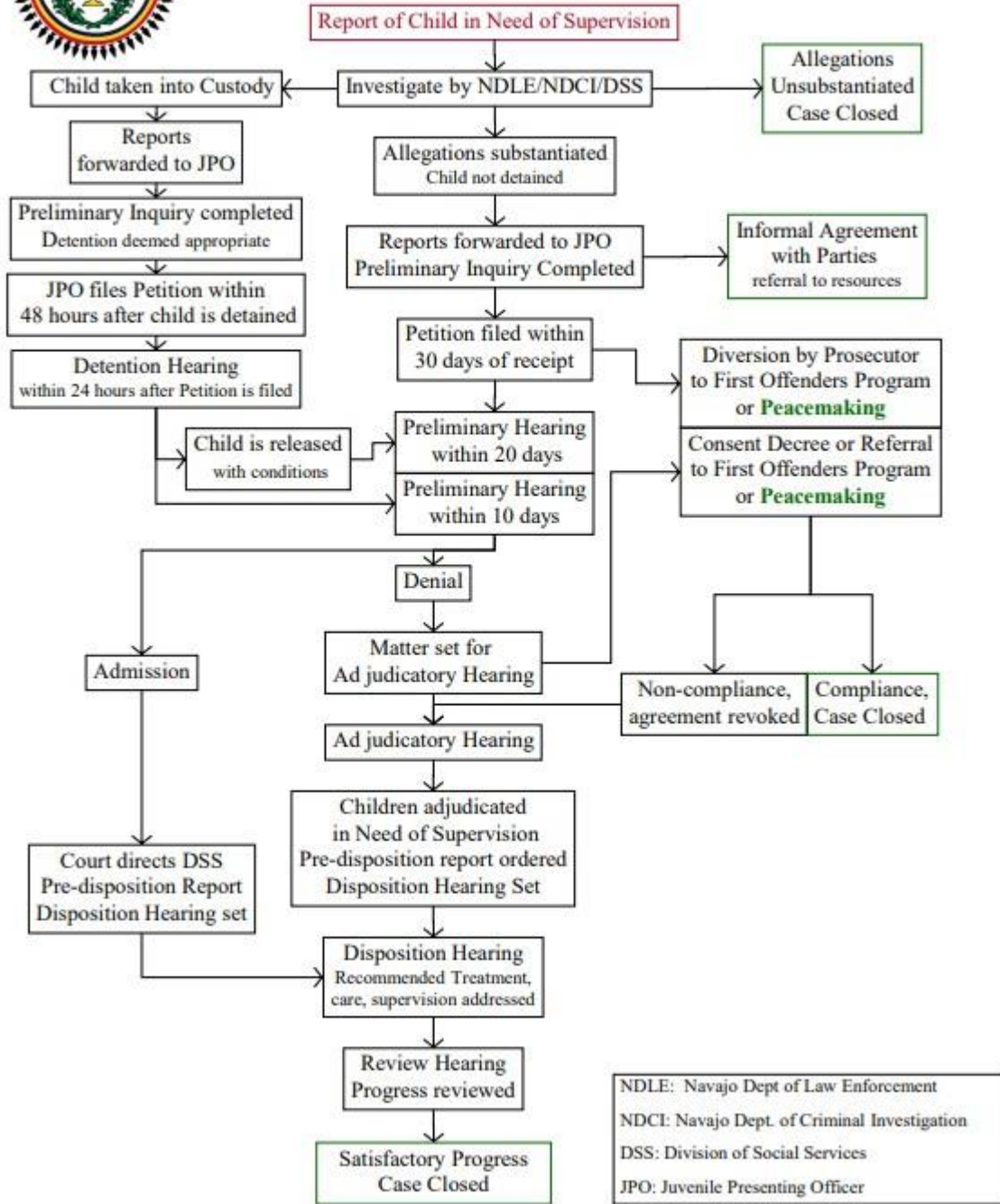
Discipline

The district will publish attendance and/or excessive tardiness and discipline procedures and disseminate them to all students and parents. Unexcused absences and/or excessive tardiness may result in the student receiving disciplinary action.

1. Phone and/or written notification to parents/guardians
2. School detention (lunch and/or after school)
3. In-school suspension
4. Summer programming
5. Loss of credit and/or audit status. *(Page High School)*
6. Withdrawal and re-enrollment process through each school office.
7. Citation by a law enforcement officer in accordance with Arizona truancy laws.
8. Alternative placement



Navajo Nation Juvenile Justice System: Children in Need of Supervision



The Navajo Nation Juvenile Justice System: Children in Need of Supervision Flowchart was created by the Navajo Nation Criminal Justice Planning Committee (NNCJPC). Copies of this chart may be reproduced. Attribution should be given to NNCJPC. For questions contact: Navajo Nation Criminal Justice Planning Committee, Office of the Chief Prosecutor, P.O. Box 3779, Window Rock, AZ 86515, 520-871-6622. Chart printed September 2001

DISCLAIMER: IT IS INTENDED THAT ALL PAGE UNIFIED SCHOOL DISTRICT HANDBOOKS COMPLY WITH THE POLICIES ESTABLISHED BY THE GOVERNING BOARD OF THE PAGE UNIFIED SCHOOL DISTRICT. IN THE EVENT THAT ANYTHING IN THIS HANDBOOK CONFLICTS WITH CURRENT DISTRICT POLICY, DISTRICT POLICY WILL PREVAIL.

PAGE UNIFIED SCHOOL DISTRICT APPROACH TO DISCIPLINE

In order to have a holistic approach to student conduct, Page Unified School District implements the use of Positive Behavioral Interventions and Supports (PBIS), traditional discipline practices, and restorative practices. Positive Behavioral Interventions and Supports (PBIS) is an approach schools use to promote school safety and good behavior. With PBIS, schools teach kids about behavior expectations and strategies. The focus of PBIS is prevention, not punishment. Traditional discipline practices give students an appropriate and progressive consequence for their actions which are against the student rules. Restorative practices focus on building, maintaining, and when necessary, repairing relationships among all members of the school community. The restorative approach is a set of guiding principles including respect, relationships, responsibility, repair, and reintegration practices for the school community.

Restorative practices give priority to repairing harm done to individuals and school communities and providing student accountability by assuming responsibility and taking action to repair the harm they caused. Page Unified School District utilizes restorative practices as a method of attempting to restore damaged relationships and to educate students. Restorative practices generally take place after a student has been administered and served a consequence for violating the code of conduct.

By using the three systems of PBIS, traditional discipline and restorative practices, Page Unified School District can actively prevent, respond and repair harm done to the learning environment. These three systems live in connection with one another and one alone cannot effectively work in isolation.

PBIS

All schools in the Page Unified School District are Positive Behavioral Intervention and Support (PBIS) schools. PBIS places emphasis on school-wide systems of support that include proactive strategies for defining, teaching, and supporting appropriate student behaviors to create positive school culture. Our school-wide expectations are that our students will display THE DUST DEVIL WAY:

- Be Kind
- Be Brave
- Work Hard

Page Elementary will define, teach, and reinforce these expectations to all students. The Behavior Flow Chart guides our response to behavior issues, and the Behavior Expectation Matrix defines the behaviors Desert View Intermediate expects from all of our students. Our goal is to have our students display The Dust Devil Way in everything they do at Page Elementary and in the community.

Page Elementary's Desired Outcomes

- Increased academic achievement and performance
- Decreased classroom disruptions and office discipline referrals
- Improved school climate and safety

To make these desired outcomes happen, Page Elementary has a systematic approach to proactive, school-wide discipline based on a Multi-tiered System of Supports (MTSS). Data will be used to track, identify, and respond to school-wide behavior issues and trends.

DICIPLINE MATRICES WILL BE AT THE END OF THE HANDBOOK

SECTION III

IJND-R ©

REGULATION

TECHNOLOGY RESOURCES

(Movies/Videos/Electronic Materials)

Movies, videos and electronic materials with ratings other than for general audiences of all ages are not to be shown in classrooms or at any District facility (this includes buses and motels where students are present) except when:

- A. The movie, video or electronic material has been previewed by the teacher or other certificated staff member.
- B. The movie, video or electronic material has been determined to not contain material that is objectionable or inappropriate for the age group to which it is intended to be shown.
- C. The responsible school administrator has approved the use of the movie, video or electronic material prior to its showing.
- D. The teacher or other certificated staff member has provided advance notification to each student's parent(s), or other responsible adult, of the title of the movie, video or electronic material and the date on which it will be shown.
- E. When a movie, video or electronic material has a rating the above advance notification will include the rating and the source providing the rating.
- F. A student whose parent(s) or other responsible adult has provided notice of their disapproval will not be permitted to view the movie, video or electronic material.

Parents or guardians have the right to have advance access to instructional materials, learning materials and activities currently in use, or being considered for use, in the District.

Parents have the right to request that their child not view any movie or video, regardless of its rating or the purpose for which it is to be shown.

A parent or guardian who objects to any learning material or activity on the basis that it is harmful includes objection to a material or activity because it questions beliefs or practices in sex, morality, or religion or, because of sexual content, violent content, or

DISCLAIMER: IT IS INTENDED THAT ALL PAGE UNIFIED SCHOOL DISTRICT HANDBOOKS COMPLY WITH THE POLICIES ESTABLISHED BY THE GOVERNING BOARD OF THE PAGE UNIFIED SCHOOL DISTRICT. IN THE EVENT THAT ANYTHING IN THIS HANDBOOK CONFLICTS WITH CURRENT DISTRICT POLICY, DISTRICT POLICY WILL PREVAIL.

profane or vulgar language, may request to withdraw that student from the activity or from the class or program in which the material is used and request an alternative assignment.

“The District shall obtain signed, written consent from a student’s parent or guardian before using video, audio, or electronic materials that may be inappropriate for the age of the student. “

JICK-EB ©

STUDENT BULLYING / HARASSMENT / INTIMIDATION

(To be displayed in school buildings and in student handbooks)

The Governing Board of the Page Unified School District believes it is the right of every student to be educated in a positive, safe, caring, and respectful learning environment. The Governing Board further believes a school environment that is inclusive of these traits maximizes student achievement, fosters student personal growth, and helps a student build a sense of community that promotes positive participation as citizens in society.

To assist in achieving a school environment based on the beliefs of the Governing Board, bullying, harassment, or intimidation in any form will not be tolerated.

Bullying: Bullying may occur when a student or group of students engages in any form of behavior that includes such acts as intimidation and/or harassment that:

- A. has the effect of physically harming a student, damaging a student's property, or placing a student in reasonable fear of harm or damage to property,
- B. is sufficiently severe, persistent or pervasive that the action, behavior, or threat creates an intimidating, threatening, or abusive environment in the form of physical or emotional harm,
- C. occurs when there is a real or perceived imbalance of power or strength, or
- D. may constitute a violation of law.

Bullying of a student or group of students can be manifested through written, verbal, physical, or emotional means and may occur in a variety of forms including, but not limited to:

- A. verbal, written/printed or graphic exposure to derogatory comments, extortion, exploitation, name calling, or rumor spreading either directly through another person or group or through cyberbullying,
- B. exposure to social exclusion or ostracism,
- C. physical contact including but not limited to pushing, hitting, kicking, shoving, or spitting, and

D. damage to or theft of personal property.

Cyberbullying: Cyberbullying is, but not limited to, any act of bullying committed by use of electronic technology or electronic communication devices, including telephonic devices, social networking and other Internet communications, on school computers, networks, forums and mailing lists, or other District-owned property, and by means of an individual's personal electronic media and equipment.

Harassment: Harassment is intentional behavior by a student or group of students that is disturbing or threatening to another student or group of students. Intentional behaviors that characterize harassment include, but are not limited to, stalking, hazing, social exclusion, name calling, unwanted physical contact and unwelcome verbal or written comments, photographs and graphics. Harassment may be related, but not limited to, race, religious orientation, sexual orientation, cultural background, economic status, size or personal appearance. Harassing behaviors can be direct or indirect and by use of social media.

Intimidation: Intimidation is intentional behavior by a student or group of students that places another student or group of students in fear of harm to person or property. Intimidation can be manifested emotionally or physically, either directly or indirectly, and by use of social media.

Students are prohibited from bullying, harassment, or intimidation on school grounds, school property, school buses, at school bus stops, at school-sponsored events and activities, and through the use of electronic technology or electronic communication equipment on school computers, networks, forums, or mailing lists.

Disciplinary action may result for bullying, harassment, or intimidation which occurs outside of the school and the school day when such acts result in a substantial physical, mental, or emotional negative effect on the victim, while on school grounds, school property, school buses, at school bus stops, or at school-sponsored events and activities, or when such act(s) interfere with the authority of the school system to maintain order. All suspected violations of law will be reported to local law enforcement.

Students who believe they are experiencing being bullied, harassed, or intimidated or suspect another student is bullied, harassed, or intimidated should report their concern to any staff member of the School District. School personnel are to maintain appropriate confidentiality of the reported information.

Reprisal by any student directed toward a student or employee related to the reporting of a case or a suspected case of bullying, harassment, or intimidation shall not be tolerated, and the individual(s) will be subject to the disciplines set out in applicable District policies and administrative regulations.

Students found to be bullying, harassing, or intimidating others will be disciplined up to and including suspension or expulsion from school.

Knowingly submitting a false report under Policy JICK or this exhibit shall subject the student to discipline up to and including suspension or expulsion. Where disciplinary action is necessary pursuant to any part of Policy JICK or this exhibit, relevant District

DISCLAIMER: IT IS INTENDED THAT ALL PAGE UNIFIED SCHOOL DISTRICT HANDBOOKS COMPLY WITH THE POLICIES ESTABLISHED BY THE GOVERNING BOARD OF THE PAGE UNIFIED SCHOOL DISTRICT. IN THE EVENT THAT ANYTHING IN THIS HANDBOOK CONFLICTS WITH CURRENT DISTRICT POLICY, DISTRICT POLICY WILL PREVAIL.

policies shall be followed.

Law enforcement authorities shall be notified any time District officials have a reasonable belief that an incidence of bullying, harassment, or intimidation is a violation of the law.

Annual Public Notification of Nondiscrimination

Page Unified School District does not discriminate on the basis of race, color, national origin, gender, age or disability in admission to its programs, services, or activities, in access to them, in treatment of individuals, or in any aspect of their operations. The **Page Unified School District** also does not discriminate in its hiring or employment practices.

This notice is provided as required by Title VI of the Civil Rights Act of 1964, Section 504 of the Rehabilitation Act of 1973, Title IX of the Education Amendments of 1972, the Age Discrimination Act of 1975, and the Americans with Disabilities Act of 1990. Questions, complaints, or requests for additional information regarding these laws may be forwarded to the designated compliance coordinator.

Bryce Anderson, Superintendent
500 South Navajo Drive Page, Arizona. (928)608-4117

VIDEO DISCLAIMER

As part of our teacher induction program, we may have teachers video themselves on occasion for reflective coaching purposes. Because of this, we would like to inform you that your child may be videotaped during a class session to be used for teacher observation. It will not be placed on any websites or outside resources. By signing the signature page at the end of this handbook and returning it, you are giving permission for video in the classroom to be used for teacher instructional purposes.

ANNUAL NOTIFICATION **PROTECTION OF PUPIL RIGHTS AMENDMENT (PPRA)**

Consent before students are required to submit to a survey that concerns one or more of the following protected areas (“protected information survey”) if the survey is funded in whole or in part by a program of the U.S. Department of Education (ED) –

1. Political affiliations or beliefs of the student or student’s family;
2. Mental or psychological problems of the student or student’s family;
3. Sex behavior or attitudes;
4. Illegal, anti-social, self-incriminating or demeaning behavior;
5. Critical appraisals of other with whom respondents have close family relationships;

DISCLAIMER: IT IS INTENDED THAT ALL PAGE UNIFIED SCHOOL DISTRICT HANDBOOKS COMPLY WITH THE POLICIES ESTABLISHED BY THE GOVERNING BOARD OF THE PAGE UNIFIED SCHOOL DISTRICT. IN THE EVENT THAT ANYTHING IN THIS HANDBOOK CONFLICTS WITH CURRENT DISTRICT POLICY, DISTRICT POLICY WILL PREVAIL.

6. Legally recognized privileged relationships, such as with lawyers, doctors or ministers;
7. Religious practices, affiliations or beliefs of the student or parts; or
8. Income, other than as required by law to determine program eligibility

Receive notice and opportunity to opt a student out of –

1. Any other protected information survey, regardless of funding;
2. Any non-emergency, invasive physical exam or screening required as a condition of attendance, administered by the school or its agent and not necessary to protect the immediate health and safety of a student, except for hearing, vision or scoliosis screenings, or any physical exam or screening permitted or required under State law; and
3. Activities involving collection, disclosure or use of personal information obtained from student for marketing or to sell or to otherwise distribute the information to others.

Receive/Inspect, upon request and before administration or use –

1. Protected information surveys of students;
2. Instruments used to collect personal information from students for any of the above marketing, sales or other distribution purposes; and
3. Instructional material used as part of the educational curriculum.

These rights transfer from the parents to a student who is 18 years old or an emancipated minor under State law.

The Page Unified School District (PUSD) will develop and adopt policies, in consultation with parents, regarding these rights, as well as arrangements to protect student privacy in the administration of protected information surveys and the collection, disclosure, or use of personal information for marketing, sales or other distribution purposes. PUSD will directly notify parents of these policies at least annually at the start of each school year and after any substantive changes. PUSD will directly notify parents of these policies at least annually at the start of each school year and after any substantive changes. PUSD will also directly notify parents at the start of each school year of the specific or approximate dates of the following activities and provide an opportunity to opt a student out of participating in:

- Collection, disclosure, or use of personal information for marketing, sales or other distribution.
- Administration of any protected information survey not funded in whole or in part by ED
- Any non-emergency, invasive physical examination or screening as described above.

Parents who believe their rights have been violated may file a complaint with:

*Family Policy Compliance Office
U.S. Department of Education
400 Maryland Avenue, SW
Washington, D.C. 20202*

Annual Notification
Family Education Rights and Privacy Act of 1974 (FERPA)

In the District's efforts to comply with the provisions of the Family Educational Rights and Privacy Act (FERPA), the Individuals with Disabilities Education Act (IDEA), the Uniting and Strengthening America by Providing Appropriate Tools Required to Intercept and Obstruct Terrorism Act of 2001 (USA PATRIOT ACT) and the No Child Left Behind Act of 2001 (NCLB) in the establishment, maintenance, correction and disposition of student records, this is notification to you of the following rights:

1. The right of a student's parent/guardian and eligible student (over 18) to inspect and review the student's education records.
2. The intent of PUSD to limit disclosure of information contained in a student's education record except: 1) by prior written consent of the student's guardian or the eligible student, 2) as directory information, or 3) under certain limited circumstances as permitted by FERPA.
3. The rights of a student's guardians or eligible student to seek to correct parts of the student's records which he or she believes to be inaccurate, misleading or in violation of the student's rights. This right includes the right to a hearing to present evidence that the records should be changed if the district decides not to alter it according to the request.
4. The right of any person to file a complaint with the office of FERPA, Washington, D.C. if the Page Unified School District violates the FERPA agreement.

*Family Policy Compliance Office
US Dept. of Education
400 Maryland Avenue, SW
Washington, D.C. 20202*

Parents/Guardians or eligible students may obtain a copy of this policy and more in the Superintendent's Office, 500 S. Navajo Dr., Page, Arizona.

DISCLAIMER: IT IS INTENDED THAT ALL PAGE UNIFIED SCHOOL DISTRICT HANDBOOKS COMPLY WITH THE POLICIES ESTABLISHED BY THE GOVERNING BOARD OF THE PAGE UNIFIED SCHOOL DISTRICT. IN THE EVENT THAT ANYTHING IN THIS HANDBOOK CONFLICTS WITH CURRENT DISTRICT POLICY, DISTRICT POLICY WILL PREVAIL.

EXHIBIT

**STUDENT BULLYING / HARASSMENT /
INTIMIDATION**

**(To be displayed in school buildings
and in student handbooks)**

The Governing Board of the Page Unified School District believes it is the right of every student to be educated in a positive, safe, caring, and respectful learning environment. The Governing Board further believes a school environment that is inclusive of these traits maximizes student achievement, fosters student personal growth, and helps a student build a sense of community that promotes positive participation as citizens in society.

To assist in achieving a school environment based on the beliefs of the Governing Board, bullying, harassment, or intimidation in any form will not be tolerated.

Bullying: Bullying may occur when a student or group of students engages in any form of behavior that includes such acts as intimidation and/or harassment that

- A. has the effect of physically harming a student, damaging a student's property, or placing a student in reasonable fear of harm or damage to property,
- B. is sufficiently severe, persistent or pervasive that the action, behavior, or threat creates an intimidating, threatening, or abusive environment in the form of physical or emotional harm,
- C. occurs when there is a real or perceived imbalance of power or strength, or
- D. may constitute a violation of law.

Bullying of a student or group of students can be manifested through written, verbal, physical, or emotional means and may occur in a variety of forms including, but not limited to

- A. verbal, written/printed or graphic exposure to derogatory comments, extortion, exploitation, name calling, or rumor spreading either directly through another person or group or through cyberbullying,
- B. exposure to social exclusion or ostracism,
- C. physical contact including but not limited to pushing, hitting, kicking, shoving, or spitting, and
- D. damage to or theft of personal property.

Cyberbullying: Cyberbullying is, but not limited to, any act of bullying committed by use of electronic technology or electronic communication devices, including telephonic devices, social networking and other Internet communications, on school computers, networks, forums and mailing lists, or other District-owned property, and by means of an individual's personal electronic media and equipment.

Harassment: Harassment is intentional behavior by a student or group of students that is disturbing or threatening to another student or group of students. Intentional behaviors that characterize harassment include, but are not limited to, stalking, hazing, social exclusion, name calling, unwanted physical contact and unwelcome verbal or written comments, photographs and graphics. Harassment may be related, but not limited to, race, religious orientation, sexual orientation, cultural background, economic status, size or personal appearance. Harassing behaviors can be direct or indirect and by use of social media.

Intimidation: Intimidation is intentional behavior by a student or group of students that places another student or group of students in fear of harm of person or property. Intimidation can be manifested emotionally or physically, either directly or indirectly, and by use of social media.

Students are prohibited from bullying, harassment, or intimidation on school grounds, school property, school buses, at school bus stops, at school-sponsored events and activities, and through the use of electronic technology or electronic communication equipment on school computers, networks, forums, or mailing lists.

Disciplinary action may result for bullying, harassment, or intimidation which occurs outside of the school and the school day when such acts result in a substantial physical, mental, or emotional negative effect on the victim, while on school grounds, school property, school buses, at school bus stops, or at school-sponsored events and activities, or when such act(s) interfere with the authority of the school system to maintain order. All suspected violations of law will be reported to local law enforcement.

Students who believe they are experiencing being bullied, harassed, or intimidated or suspect another student is bullied, harassed, or intimidated should report their concern to any staff member of the School District. School personnel are to maintain appropriate confidentiality of the reported information.

Reprisal by any student directed toward a student or employee related to the reporting of a case or a suspected case of bullying, harassment, or intimidation shall not be tolerated, and the individual(s) will be subject to the disciplines set out in applicable District policies and administrative regulations.

Students found to be bullying, harassing, or intimidating others will be disciplined up to and including suspension or expulsion from school.

Knowingly submitting a false report under Policy JICK or this exhibit shall subject the student to discipline up to and including suspension or expulsion. Where disciplinary action is necessary pursuant to any part of Policy JICK or this exhibit, relevant District policies shall be followed.

Law enforcement authorities shall be notified any time District officials have a reasonable belief that an incidence of bullying, harassment, or intimidation is a violation of the law.

SECTION IV

STUDENT RIGHTS

- Students have the right to a quality education in a clean, safe environment.
- Students have the right to be clearly informed about any rules for which they will be held accountable, to be informed of any charges which may be made against them, and ask for consideration of special circumstances.
- Students have the right of privacy of person, and freedom from unreasonable search and seizure of property unless school employees have reason to suspect that the health, safety, or welfare of students may be in danger.
- Students have a right to present a complaint or grievance when rights are violated by following the procedures outlined in the Page Elementary Student/Family Handbook.

STUDENT RESPONSIBILITIES

- Students have a responsibility to promote a clean, safe environment where a quality education can be delivered.
- Students have a responsibility to be informed of and follow the school's code of conduct outlined in the 2025-2026 Page Elementary Student/ Family Handbook.
- Students have a responsibility to avail themselves of a quality education by attending school regularly, completing assigned school work, and asking for consideration of special circumstances.
- Students have the responsibility to comply with the Page Unified School District Technology Resources Acceptable Use Policy as outlined in the Page Elementary Student/ Family Handbook. Violation of this Policy may constitute a criminal offense and result in disciplinary action and revocation of their use of district technology resources.

STUDENT LIABILITIES

- Students are liable for conduct that interferes with the educational process at Page Elementary
- Students will be subject to disciplinary procedures outlined in the Page Elementary Student/Family Handbook when they violate the school's code of conduct.

SIGNATURES:

I understand that I am responsible for *READING* the Student/Family Handbook. I also understand that I will be held accountable for the rights, responsibilities, and liabilities outlined in it.

Student signature

Date

I have *READ* the Page Elementary Student/Family Handbook. I understand that my child will be held accountable for the rights, responsibilities, and liabilities outlined in it.

Parent/Guardian signature

Date

DISCLAIMER: IT IS INTENDED THAT ALL PAGE UNIFIED SCHOOL DISTRICT HANDBOOKS COMPLY WITH THE POLICIES ESTABLISHED BY THE GOVERNING BOARD OF THE PAGE UNIFIED SCHOOL DISTRICT. IN THE EVENT THAT ANYTHING IN THIS HANDBOOK CONFLICTS WITH CURRENT DISTRICT POLICY, DISTRICT POLICY WILL PREVAIL.

PUSD DISCIPLINE MATRIX GRADES KINDERGARTEN - 2nd

BEHAVIOR	DESCRIPTION	1ST OFFENSE	2ND OFFENSE	3RD OFFENSE	4TH OFFENSE
----------	-------------	-------------	-------------	-------------	-------------

★ = POLICE REFERRAL ⊗ = THREAT ASSESSMENT ◻ = STUDENT SUPPORT SERVICES REFERRAL ▲ = DCS REFERRAL BIP = Behavior Intervention Plan

AGGRESSION

Verbal Provocation	Verbal Dispute	A confrontation between two or more students without physical aggression or injury.	STRUCTURED CALL	LD - 1 DAY	LD - 2 DAYS	ALE - 1 DAY
	Offensive Language Directed at a Staff Member	Offensive language or gesture as defined above directed at a staff member.	STRUCTURED CALL	STRUCTURED CALL	LD - 2 DAYS	ALE - 2 DAYS
Disorderly Conduct	Disturb Educational Setting	Disturbs the peace or quiet of the educational setting by engaging in violent or seriously disruptive behavior.	STRUCTURED CALL	ALE - 1 DAY	ALE - 2 DAYS	ALE - 3 DAYS
	Refusal to Obey Lawful Order	Refuses to obey a lawful order to disperse issued to maintain public safety in dangerous proximity to a fire, hazard or any other emergency.	STRUCTURED CALL	LD - 2 DAYS	ALE - 1 DAY	ALE - 2 DAYS
Recklessness	Non-Violent Playful Behavior	Excessive playful behavior which has the potential to cause harm accidentally (including playful hitting, pushing, shoving or other behaviors which could cause harm unintentionally).	STRUCTURED CALL	LD - 1 DAY	LD - 2 DAYS	ALE - 1 DAY
Fighting*	Fighting	A physical conflict involving two or more students.	STRUCTURED CALL	LD - 2 DAYS	ALE - 1 DAY	ALE - 3 DAYS
Assault*	Physical Injury of a Student	Causing physical injury to another student. Cases in which physical injury are caused by accident or other action undertaken on the reasonable belief that it was necessary to protect another person or self shall not constitute a violation of this rule.	ALE - 4 DAYS	ALE - 8 DAYS / OPTION OF DISTRICT HEARING	DISTRICT HEARING	EXPULSION HEARING
Aggravated Assault**	Physical Aggression Toward Staff	Aggressive behavior with the potential to cause physical harm towards others, including a forceful action, attitude, or behavior that is violently OR seriously expressed physically toward a staff member.	ALE - 4 DAYS	ALE - 8 DAYS / OPTION OF DISTRICT HEARING	DISTRICT HEARING	EXPULSION HEARING
	Physical Injury of Staff	Causing physical injury to a staff member. Cases in which physical injury are caused by accident or other action undertaken on the reasonable belief that it was necessary to protect another person or self shall not constitute a violation of this rule.	ALE - 4 DAYS	ALE - 8 DAYS / OPTION OF DISTRICT HEARING	DISTRICT HEARING	EXPULSION HEARING
	Endangering the Lives of Others or Causing Serious Bodily Injury	Actions causing serious bodily harm or actions that significantly jeopardizes an individual(s) safety or well-being.	DISTRICT HEARING	EXPULSION HEARING		

TOBACCO

This includes being under the influence at school, school-sponsored events and on school-sponsored transportation.

Tobacco Violation*	Use of or Possession of Tobacco	The use/possession of tobacco products, tobacco substitutes, electronic cigarettes, other chemical inhalation devices, or tobacco vapor products.	STRUCTURED CALL	LD - 1 DAY	ALE - 1 DAY	ALE - 2 DAYS
--------------------	---------------------------------	---	-----------------	------------	-------------	--------------

◻ / BIP

PUSD DISCIPLINE MATRIX GRADES KINDERGARTEN - 2nd

BEHAVIOR	DESCRIPTION	1ST OFFENSE	2ND OFFENSE	3RD OFFENSE	4TH OFFENSE
----------	-------------	-------------	-------------	-------------	-------------

★ = POLICE REFERRAL ⊗ = THREAT ASSESSMENT ◻ = STUDENT SUPPORT SERVICES REFERRAL ▲ = DCS REFERRAL BIP = Behavior Intervention Plan

ARSON

Arson	Of a Structure of Property	Commits arson of a structure or property by knowingly and unlawfully damaging a structure or property by knowingly causing a fire or explosion.	ALE - 4 DAYS	ALE - 8 DAYS / OPTION OF DISTRICT HEARING	DISTRICT HEARING	EXPULSION HEARING
			★ / ⊗ / ◻ / BIP			

ATTENDANCE POLICY VIOLATION

Tardy	Excessive Tardy	1st Violation: 3 - 4 SAME CLASS	STRUCTURED CALL	STRUCTURED CALL	STRUCTURED CALL	STRUCTURED CALL
		2nd Violation: 5 SAME CLASS				
		3rd Violation: 6 SAME CLASS				
		4th Violation: 7+ SAME CLASS				
Truancy	Skipping/Ditching Class	Unapproved absence from a class period within the school day, including leaving class without permission.	STRUCTURED CALL	LD - 1 DAY	LD - 2 DAYS	ALE - 1 DAY
	Neglecting Obligations	Unapproved absence from an assigned detention.	STRUCTURED CALL	LD - 1 DAY	LD - 2 DAYS	ALE - 1 DAY

HARASSMENT, THREAT AND INTIMIDATION

Harassment, Nonsexual*	Harassment	Harassment is a form of discrimination. Physical or verbal conduct related to a person's race, religion, national origin, age, gender (including pregnancy), disability, sexual orientation, military status, genetic information or other category protected by law. Includes, but is not limited to, verbal harassment or abuse, implied or overt threat(s), physical acts of aggression, and intimidating behavior, which have the effect of substantially or unreasonably interfering with a student's education, use of services, or participation in activities.	LD - 2 DAYS	ALE - 2 DAYS	ALE - 3 DAYS	ALE - 4 DAYS
Bullying*	Bullying	Physical, verbal, written, or electronic conduct, directed toward a student that is: 1) Unwanted, 2) Repeated, and 3) Involves an imbalance of power. These actions are so pervasive, severe, and objectively offensive, that they: 1) have the purpose of creating or resulting in an intimidating, hostile, or offensive academic environment, or 2) have the purpose or effect of substantially or unreasonably interfering with a student's academic performance, which deprives the student access to educational opportunities.	LD - 2 DAYS	ALE - 1 DAY	ALE - 2 DAY	ALE - 4 DAYS
Threat or Intimidation*	Intimidation/Threat Toward a Student	Use of coercion, force, threats, violence, intimidation or similar conduct that constitutes a threat to a student's safety or interferes with school purposes.	ALE - 1 DAYS	ALE - 2 DAYS	ALE - 4 DAYS	ALE - 8 DAYS
				★ / ⊗ / ◻ / BIP		
	Intimidation/Threat Toward a Staff	Use of coercion, force, threats, violence, intimidation or similar conduct that constitutes a threat to a staff member's safety or interferes with school purposes.	ALE - 2 DAYS	ALE - 4 DAYS	ALE - 8 DAYS	DISTRICT HEARING
★ / ⊗ / ◻ / BIP						

PUSD DISCIPLINE MATRIX GRADES KINDERGARTEN - 2nd

BEHAVIOR		DESCRIPTION	1ST OFFENSE	2ND OFFENSE	3RD OFFENSE	4TH OFFENSE
★ = POLICE REFERRAL ⊗ = THREAT ASSESSMENT ◻ = STUDENT SUPPORT SERVICES REFERRAL ▲ = DCS REFERRAL BIP= Behavior Intervention Plan						
(ACADEMIC INFRACTIONS) - LYING, CHEATING, FORGERY OR PLAGIARISM						
Lying	Academic Dishonesty	Using or submitting work that is not your own, also known as cheating, plagiarism, copying, transferring computer files, etc. Students will be expected to follow classroom instructions relating to academic integrity.	WARNING	STRUCTURED CALL	LD - 1 DAY	LD - 2 DAYS
Cheating						
Plagiarism						
Forgery	Forgery	Copying with the intent to deceive. It need not be handwriting; the law of forgery covers printing, and engraving.	WARNING	STRUCTURED CALL	LD - 1 DAY	LD - 2 DAYS
SCHOOL POLICIES, OTHER VIOLATIONS OF						
Combustible	Combustible	Student is in possession and/or use of substance or object that is readily capable of causing bodily harm or property damage, i.e., matches, lighters, firecrackers, gasoline, and lighter fluid.	CONFISCATE	LD - 1 DAY	LD - 3 DAYS	ALE - 2 DAYS
Contraband	Contraband	Having at school or on the bus items that are harmful, or could cause harm, or are being used in a questionable, inappropriate or unsafe manner. Includes, but is not limited to items such as: water balloons, water guns, snap caps, stink bombs, itching powder, rubber bands, shooters, eggs, shaving cream, laser pointer, aerosol sprays of any type, toys, bandannas, etc.	CONFISCATE	LD - 1 DAY	LD - 3 DAYS	ALE - 2 DAYS
Defiance, Disrespect, and Non-Compliance	Failure to Comply with Instructions	Communication or actions that demonstrate a lack of respect or courtesy toward an individual.	STRUCTURED CALL	LD - 1 DAY	LD - 2 DAYS	LD - 3 DAYS
	Disrespectful Behavior	Communication or actions that demonstrate a lack of respect or courtesy toward an individual.	STRUCTURED CALL	LD - 1 DAY	LD - 2 DAYS	ALE - 1 DAY
	Continued Willful Disobedience	Student conduct deemed as repeated unwillingness to submit to authority or refusal to respond to a reasonable request (including providing false information).	LD - 2 DAYS	LD - 3 DAYS	ALE - 1 DAY	ALE - 2 DAYS
Disruption	Class Disruption	Creating or contributing to a moderate disturbance that disrupts the normal operation of the school environment but doesn't pose a threat to the health or safety of others.	STRUCTURED CALL	LD - 1 DAY	LD - 2 DAYS	LD - 3 DAYS
	Field Trip Disruption	Creating or contributing to a moderate disturbance that disrupts the normal operation of the learning environment but doesn't pose a threat to the health or safety of others.	STRUCTURED CALL	STRUCTURED CALL & LOSS OF FIELD TRIP PRIVLEDGES		
	School Disruption	Creating or contributing to a disturbance that disrupts the normal operation of the school environment and poses a threat to the health or safety of others.	LD - 1 DAY	LD - 3 DAYS	ALE - 1 DAY	ALE - 2 DAYS
			★/⊗	★/⊗/◻/BIP		
Language, Inappropriate	Offensive Language/Gesture	Use of disgusting, hurtful, obscene or foul language, communication, or action.	WARNING	STRUCTURED CALL	LD - 1 DAY	LD - 2 DAYS

PUSD DISCIPLINE MATRIX GRADES KINDERGARTEN - 2nd

BEHAVIOR	DESCRIPTION		1ST OFFENSE	2ND OFFENSE	3RD OFFENSE	4TH OFFENSE
★ = POLICE REFERRAL ⊗ = THREAT ASSESSMENT ◻ = STUDENT SUPPORT SERVICES REFERRAL ▲ = DCS REFERRAL BIP = Behavior Intervention Plan						
SCHOOL THREAT						
School Threat	School Shooting Threat	A substantial threat or plan to conduct a school shooting.	ALE - 4 DAYS	ALE - 8 DAYS / OPTION OF DISTRICT HEARING	EXPULSION HEARING	
			★ / ⊗ / ◻ / BIP			
Bomb Threat Chemical or Biological Threat	Bomb Threat	A threat to detonate an explosive or incendiary device to cause property damage, death, or injuries, whether or not such a device actually exists.	ALE - 4 DAYS	ALE - 8 DAYS / OPTION OF DISTRICT HEARING	EXPULSION HEARING	
			★ / ⊗ / ◻ / BIP			
Fire Alarm Misuse	Fires and Misuse of Fire Alarms / Extinguishers	Causing, or attempting/pulling a fire alarm, or using a fire extinguisher without valid cause.	STRUCTURED CALL	LD - 2 DAYS	ALE - 2 DAYS	ALE - 4 DAYS
				⊗ / ◻		
SEXUAL OFFENSES						
Pornography	Pornographic Materials	Transmitting, possessing, creating, or viewing obscene writings, drawings, photographs, videos, sound recordings, or the like.	STRUCTURED CALL	LD - 1 DAY	LD - 2 DAYS	ALE - 2 DAYS
Indecent Exposure or Public Sexual Indecency*	Sexual Activity	Touching of a sexual nature, attempting to engage or engaging in sexual activity, or exposing private body parts.	STRUCTURED CALL	LD - 1 DAY	LD - 2 DAYS	ALE - 2 DAYS
					◻ / BIP	
Harassment, Sexual*	Sexual Harassment	Acts of a sexual nature against a person's will, or where a person is incapable of giving consent.	LD - 2 DAY	ALE - 2 DAYS	ALE - 3 DAYS	ALE - 4 DAYS
			⊗ / ◻ / BIP		★ / ⊗ / ◻ / ▲ / BIP	
TECHNOLOGY, IMPROPER USE OF						
Electronic Device/Technology Misuse	PUSD Device	Unauthorized and/or non-educational use of electronic devices/technology. Use of District technology is a privilege and not a right. If the misuse constitutes another violation, consequences consistent with the other violation may also be given.	WARNING	STRUCTURED CALL	LD - 2 DAYS	LD - 3 DAYS
Cell Phones/Personal Devices	Personal Device	Possessing a cell phone, or other personal device (air pods etc), that is turned on, on school property between the first bell or last bell of the school day, or on buses contracted by the District, unless authorized by a school official, is in violation of this rule. Student must be actively using the device to be in violation.	CONFISCATE RETURNED END OF DAY	CONFISCATE PICKED UP BY PARENT/GUARDIAN	CONFISCATE PICKED UP BY AARENT/GUARDIAN LD - 1 DAY	CONFISCATE PICKED UP BY AARENT/GUARDIAN LD - 2 DAYS
THEFT						
Theft	Theft	Taking something that does not belong to you. Stealing, or attempting to steal, private or school property, or receiving school property.	STRUCTURED CALL	LD - 1 DAY	ALE - 1 DAY	ALE - 3 DAYS

PUSD DISCIPLINE MATRIX GRADES KINDERGARTEN - 2nd

BEHAVIOR	DESCRIPTION	1ST OFFENSE	2ND OFFENSE	3RD OFFENSE	4TH OFFENSE
----------	-------------	-------------	-------------	-------------	-------------

★ = POLICE REFERRAL ⊗ = THREAT ASSESSMENT ◻ = STUDENT SUPPORT SERVICES REFERRAL ▲ = DCS REFERRAL BIP = Behavior Intervention Plan

VANDALISM OR CRIMINAL DAMAGE

Destruction of Property	Vandalism of Personal Property	Causing or attempting to cause damage to private or school property, or the repeated damage involving private or school property, including graffiti. This also includes the alteration of student or school computer programs or systems.	STRUCTURED CALL COMMUNITY SERVICE	LD - 1 DAY COMMUNITY SERVICE	ALE - 1 DAY COMMUNITY SERVICE	ALE - 3 DAYS COMMUNITY SERVICE
	★ / ◻ / BIP					
	Vandalism of School Property		STRUCTURED CALL COMMUNITY SERVICE	LD - 1 DAY COMMUNITY SERVICE	ALE - 1 DAY COMMUNITY SERVICE	ALE - 3 DAYS COMMUNITY SERVICE
	★ / ◻ / BIP					

WEAPONS AND DANGEROUS ITEMS - BOARD POLICY JICI

Firearm**	Firearms	Carrying, possessing, storing, keeping, leaving, placing, or putting into the possession of another person, any firearm.	DISTRICT HEARING	EXPULSION HEARING		
			★ / ⊗ / ◻ / ▲ / BIP			
Simulated Firearm	Simulated Firearm	An instrument displayed or represented as a firearm and/or perceived by a reasonable person to be capable of causing injury or death given the manner in which it is possessed, controlled, or used. Toy, look-alike, and imitation firearms.	ALE - 2 DAYS	ALE - 4 DAYS	ALE - 8 DAYS / OPTION OF DISTRICT HEARING	DISTRICT HEARING
			★ / ⊗ / ◻ / BIP			
Other Weapons*	Weapons	Possessing, handling, or transmitting any object or material that is ordinarily considered a weapon, lookalike weapons, or any object that could place a person in reasonable fear of physical harm. Includes, but not limited to knives, razor blades, mace, and pepper spray.	ALE - 4 DAYS	ALE - 8 DAYS / OPTION OF DISTRICT HEARING	DISTRICT HEARING	EXPULSION HEARING
			⊗ / ◻ / BIP	★ / ⊗ / ◻ / BIP		

★ = POLICE REFERRAL ⊗ = THREAT ASSESSMENT ◻ = STUDENT SUPPORT SERVICE REFERRAL ▲ = CPS REFERRAL BIP = Behavior Intervention Plan

LD - LUNCH DETENTION / ALE - ALTERNATIVE LEARNING ENVIRONMENT / SUS - SUSPENDED OFF CAMPUS

Page Elementary School
Family Handbook
Student Policies and Procedures
2025-2026 School Year

(928) 608- 4200

P.O. Box 1927
Page, Arizona 86040

Table of Contents

Section I

Letter from Principal

Vision/Mission

Lunch Schedule

Calendar

Contact Information

Student Responsibilities

Parent Responsibilities

General Information

Section II

Attendance

Navajo Nation Truancy

Discipline / Behavior

Section III

Technology

Movie Policy

Audio/video recording language

Section IV

Signature Page

SECTION I

Letter from the Principal

Dear students, parents, and guardians,

Welcome to a new school year! I look forward to learning and growing with you and your Page Elementary School Dust Devil. As you know, learning doesn't just happen in the classroom. Our children are learning all the time through the experiences that the school provides them and through the experiences that you provide them. Encourage your child's curiosity and natural desire to learn by allowing them to ask questions, to make mistakes, and to reflect. Talk to your child about being a learner. Help them to understand that Page Elementary School is one important part of their learning journey. This is where they will learn the foundational skills in reading and math, and build habits that will enable them to be successful in their future.

Please remember that attending school every day is an important aspect of your child's learning journey. We need you to make sure your child comes to school every day. This is the first step to building a strong learner.

The information in this handbook will make learning easier for all of us by explaining our school practices. Take some time to read through this handbook and review it with your child.

If you have any questions, comments, concerns, or suggestions, feel free to reach out to me.

Sincerely,

Mary Stahl, Page Elementary School Principal
mstahl@pageud.org

Governing Board Members: Desiree Fowler, Chris Benally, Bunny Cochran, Mike Mangum, Renee Tsosie, and Dr. Bryce Anderson, Superintendent

PAGE UNIFIED SCHOOL DISTRICT VISION

Page Unified School District is a community of learners who direct our collective actions and resources towards the unique learning needs of every child in order for all students to become college and career ready and successful in a global society.

PAGE UNIFIED SCHOOL DISTRICT MISSION

Our Schools are passionate about the learning-for-all mission and understand that every student matters. We are responsible and accountable for the education of every student that walks through our doors every day.

PAGE UNIFIED SCHOOL DISTRICT MOTTO

Collectively committed to every student, every day, every minute.

Lunch Schedule

If your child is transferred to another class, we will contact the parent or guardian and inform them of this change.

Contact Information

Page Elementary Main Office Phone Number: 928-608-4200

Mary Stahl, Principal: 928-608-4219, mstahl@pageud.org

Wendy Gilbert, Assistant Principal: 928-608-4191, wgilbert@pageud.org

Michelle Pugh, Administrative Assistant: 928-608-4202, mpugh@pageud.org

Maxine Benally, Registrar: 928-608-4215, mbenally@pageud.org

Darlisa Tsinnie, Attendance Clerk: 928-608-4215, dtsinnie@pageud.org

Brandon Hanks, Counselor: 928-608-4206, bhanks@pageud.org

Lisa Redman, Counselor : 928-608-4206, lredman@pagud.org

Tito Hoover, Behavior Interventionist: 928-608-4203, thoover@pageud.org

Tatyanna Begay, Behavior Interventionist: 928-608-4203, tbegay@pageud.org

Teena Manson, Nurse: 928-608-4207, tmanson@pageud.org

Sharon Watson, Director of Student Services: 928-608-4152 swatson@pageud.org

Superintendent's Office: 928-608-4100

Lorraine Allen, Indian Education, Administrative Assistant: 928-608-4286

Transportation: 928-608-4131

Student Responsibilities

To assist you and others in the pursuit of a quality education, we have established some guidelines for student behavior. These guidelines are based on existing policies and procedures of the school district and are designed to create a pleasant and safe environment for all students in our schools.

Your positive attitude toward school and daily attendance play a large role in determining how well you do in school. Your primary purpose for coming to school should be to learn and grow through classroom and extracurricular activities so that you can become College and Career Ready.

You must remember that you are responsible for your own choices and actions. If your actions are in violation of school guidelines, you will have to accept the consequences. You should also understand that Arizona law allows the school district to hold you accountable for your behavior on school property, on the way to and from school, during any school sponsored activity, at school bus stops, and in other locations outside school grounds if the behavior has a negative impact on other students, teachers, staff or school activities. The Dust Devil Way and the discipline policy later in the handbook describe the guidelines for student behavior. You may, at any time, be counseled by teachers or administrators regarding your behavior. Please accept this advice as valuable and understand that it is intended to help you.

We are proud of our district and the opportunities provided to students. We sincerely hope you will take advantage of the many programs and strive to become College and Career Ready. All students must obey the rules and regulations as outlined for them while they are in school.

Parents as Partners

You are your child's first and most important teacher. It is both your right and your responsibility to take an active role in your child's education. Page Elementary encourages your participation. You are always welcome to visit your child's classroom. It is the best way to know what is being taught and learned and how your child interacts with the teacher and other students. We do require that you check in at the office to ensure the opportunity to help you in any way we can.

Parent's Rights:

- Parents have the right to be informed of their minor child's academic performance and social behavior.
- Parents have the right to be informed of school regulations.
- Parents have the right to visit the school.
- Parents have the right to expect that the school will fulfill its responsibility for the educational, social, and general welfare of their child.
- Parents have the right to expect courtesy from all school district employees.
- Parents have the right to check out their child from school when they feel it is in the best interest of their child.

Parent's Responsibilities and Duties:

- To encourage, help guide their child in following all school rules and regulations.
- Parents have the responsibility to cooperate and be courteous with school officials in resolving problem situations involving their child.
- To participate in the school's Parent Teacher Conferences and school activities.
- Schedule daily homework time, review it regularly, and discuss what their child has learned.
- Encourage their child to read.

- Keep in contact with the school by school visits, phone calls, letters, and attendance at parent-teacher conferences, and enrolling on PowerSchool Parent.
- Maintain high expectations of their child by praising his/her achievement at school, providing a warm, caring home, emphasizing school, and encouraging academic success.
- Ensure their child is on time and in school everyday, in accordance with Navajo Nation Truancy Law 10 NNC 118, 502, 503 and Arizona Revised Statute §15-521.
- Encourage their child to be responsible for his/her actions.
- Keep their child's school records up to date.

Site Council

The Page Elementary Site Council is made up of teachers, parents, community members, and other staff. The meeting schedule will be established and posted. All meetings will follow the Arizona laws pertaining to open meetings. Parents and staff are encouraged to attend and to communicate with the site council members.

GENERAL INFORMATION

Enrollment Exceptions

A pupil who has been expelled by any school district in this state or who is not in compliance with a condition of disciplinary action imposed by any other school or school district or with a condition imposed by the juvenile court shall not be admitted. Acceptance for enrollment may be revoked upon finding the existence of any of these conditions. Schools have the right to conduct a background check of any disciplinary action, academic status, and attendance.

Closed Campus

Page Elementary is a closed campus. Students are not allowed to leave campus unless properly checked out in the main office by parent/legal guardian.

Early Checkouts

All student checkouts must be done by authorized adults in the front office using the proper checkout form. Authorization means the adult is listed on the student's check-out list, is able to show proof of identification, and is over the age of 18. School personnel need to verify the identity of authorized adults for checkouts. Students are not allowed to leave the school campus during school hours for any reason without the knowledge and consent of a school authority. Permission to leave the school grounds will be granted only upon written request of the parent/guardian. We ask that students are checked out before 3:25.

Going Home Changes

All changes must be reported to the office by 2:00.

Visitors

Parents or legal guardians are welcome to visit Page Elementary. Page Unified School District requires all visitors to report to the office, sign in for clearance, and acquire a visitor's pass. All visitors must be respectful. Visitors may be asked to leave or be escorted off the school grounds if there is a safety or security issue.

Lost and Found

Lost and found items are placed in the

Playground Usage

General public is not allowed on our playgrounds between the hours of 7:30am – 4:40 pm Monday-Thursday from the first day to the last day of school unless permission is given by the Principal. Due to the lack of supervision, students are not allowed on the playground after school. Students who choose to use the playground after 4:00pm and/or on weekends/holidays do so at their own risk.

Electronic Items

Cell Phones, tablets, headphones, personal laptops, any other electronic devices: School staff will not conduct any searches or investigations for lost or stolen electronic items regardless of cost or amount. The school is not responsible for replacing lost, damaged or stolen electronic items. Phones will be silenced and kept in the student's backpack during class. During state and district benchmark testing, ALL personal electronic devices will not be allowed in the testing environment.

The video or audio recording of any person(s) on school or district property and or distribution of any audio or video recording of any person(s) is not permitted without express written permission from school administration and is only permitted for school related activities.

Withdrawing Students

Parents are required to sign a withdrawal form when students are going to change schools. At the time of withdrawal all school materials must be returned (i.e. textbooks, library books) and outstanding bills paid. Student's records will be forwarded to the new school upon written request from the school.

Meal Program

Page Elementary provides breakfast and lunch free of charge for all students.

Health and Safety

Please stress the importance of all phases of safety to your child. School rules apply on the way to and from school.

- Report home (or designated location) at a time set by parents
- Cross at crosswalks only
- Stay away from any stranger offering a ride or treats.
- Bicycles, scooters, and skateboards must be walked on school grounds.
- "Heelys" or roller shoes are not allowed at school.

Nurse Services

It is very important for children's academic success that they attend school regularly. Prompt assessment at home and treatment for illness can help limit extended absence. If your child is injured or becomes sick at school, we will notify you so that you, or a person designated by you, can take your child home. It is very important that we have your current telephone number at home and at work, as well as the number of a friend or relative for emergency contact. If, in an emergency situation, we are unable to reach you or your designee, paramedic/ambulance services will be requested. Families will be responsible for the cost of paramedic/ambulance services.

Medication

If your child needs to take medication at school, please contact the nurse for the proper form for your written permission to administer it. All medication sent to school must be in the original container and delivered to the nurse for proper locked storage. No medication will be administered without a signed permission slip.

Immunization Laws

State Law requires that all children be completely immunized before attending school. Arrangements for immunizations can be made with your family physician or the county health department.

Children who have not been immunized will be excluded from school in the event of an epidemic. Special forms, available in the office, must be completed for exception to the immunization requirement.

Effective January 1, 1992, a stronger state immunization law requires that we suspend from school any child whose immunization record is not up-to-date (A.R.S.§15-873). This new law is in response to the large increase in vaccine-preventable disease in Arizona. You will be notified by our office if your child's medical records are not in compliance with the law.

Parking Lot Drop Offs

Students must be dropped off in the designated area. Observe all posted signs and speed limits. Do not drop students off in the bus loading and unloading zones. 7:30 am is the earliest that students can be dropped off.

GUIDELINES FOR BUS USE

Riding the school bus is a privilege. Inappropriate behavior or abuse of activity bus privileges will result in disciplinary action which may include the **SUSPENSION OF THE PRIVILEGE OF RIDING THE SCHOOL BUS**. It would then become the responsibility of the parents/guardians to provide transportation to school. The primary responsibility of the school bus driver is to make sure students arrive and depart safely. Students must follow the directions of the school bus driver.

School bus passenger Rules:

- No food or drinks are allowed (this includes gum). Water is acceptable.
 - Classroom behaviors apply.
 - Bus driver will assign seats.
 - Possession or use of drugs is prohibited.
 - Remain properly seated “Bottom to Bottom, Back to Back, Feet to Floor” keeping aisles clear.
 - Do not use profane or obscene language.
 - Keep all parts of your body inside the bus at all times.
 - Talk quietly. Do not yell or make other loud noises.
 - Respect the rights, property and safety of others.
 - Do not destroy property. You will be responsible for the cost of repairs.
-
- Fighting will result in immediate revocation of bus riding privileges pending a parent conference.
 - Do not distract the bus driver, as you are jeopardizing the safety of others.
 - Musical instruments and skateboards must be under your control at all times while not occupying a seat.

Student behavior on a school/activity bus should be the same as that in a well-ordered classroom with the exception that students are free to talk in a low voice. Disorderly conduct or refusal to respect the authority of the driver shall be sufficient reason for the student to receive a discipline referral. This includes transportation to and from school, athletic/activity school events, field trips, and the late bus.

When unsafe, inappropriate or unacceptable behavior occurs on the bus, the bus driver will issue a referral and refer the student(s) to the office. School officials will enforce policy when taking the following action:

- On the first incident, the driver will verbally reprimand and explain the violation.
- If the violation is repeated, the incident will be investigated and the proper disciplinary actions will be taken.
- Any serious violation may result in an immediate long-term suspension from bus privileges on the first referral.

Major incidences or multiple incidences and referrals can result in suspension or revocation of bus privileges. Students whose transportation privileges have been revoked are still expected to attend school on a regular basis, and it is the parent’s responsibility to provide such transportation. Good citizenship does not stop at the bus door. Reference ARS 15-341 EEAE bus safety/ JIC- student conduct.

Students who do not attend one or more classes due to truancy may be denied access to bus transportation that day. Students who misuse school transportation may receive disciplinary consequences.

Selling/Trading

DISCLAIMER: IT IS INTENDED THAT ALL PAGE UNIFIED SCHOOL DISTRICT HANDBOOKS COMPLY WITH THE POLICIES ESTABLISHED BY THE GOVERNING BOARD OF THE PAGE UNIFIED SCHOOL DISTRICT. IN THE EVENT THAT ANYTHING IN THIS HANDBOOK CONFLICTS WITH CURRENT DISTRICT POLICY, DISTRICT POLICY WILL PREVAIL.

Students are not allowed to sell or trade candy or other items at school (including trading cards), other than for a school-sponsored project.

District Substance Abuse Policy

Substance abuse infractions are rare at the elementary level in the Page Unified School District. However, it is important for parents and students to know that mandatory policies and procedures exist for handling them if they should occur. Students must understand that school is a safe, drug-free environment and that use or possession of alcohol or other drugs is unacceptable.

School Campus and Playground Safety

- Students follow rules provided by teachers and safety directives on the playground.
- Bicycles, skateboards, roller blades, and scooters are not permitted to be used on Page Unified School District grounds.
- Students are on school rules from the time they leave their parents' homes until they return to their parents' homes at the end of the day.

Compulsory Education

A parent/and or legal guardian, having custody over a school-aged minor is required under State law to enroll and send said child to public school, established private school or enroll in home-schooling during the school year of the district in which the minor resides. The process of education requires continuity of instruction, class participation and study. Frequent absences from classes disrupt the instructional process. Parents/guardians are encouraged to work with the school in promoting regular attendance of all students.

Report Cards

Page Elementary report cards are completed quarterly. Our grading and reporting is standards based. Our standards based report card is designed to clearly communicate what students have learned and to what degree they have learned the standards. With a standards based approach, teachers evaluate student learning using classroom observation, student's classroom work and assessments. The combination of these pieces of evidence when reviewed with parents provides a more detailed picture of student progress. Parent conferences are scheduled in October and March. However, anytime you have a question or concern, our teachers welcome additional conferences with parents. Benchmark assessments reveal students' progress in mastery of standards.

Homework

Homework is a part of a student's learning that increases their ability to master concepts. Homework may be assigned daily and required by each grade level.

Library Books

The use of the library is a privilege all our students enjoy. Like other privileges, there is also responsibility. Please help your children keep borrowed books clean and safe. Remind them to wash their hands before reading, do not fold or mark the pages and decide on a safe place to keep books so pets and young children cannot damage them. If a book is damaged or lost, the librarian will notify you so you can arrange for its replacement.

Recess & Outdoor Physical Activity

Fresh air and exercise is an important part of the school day. Time spent outdoors gives students the opportunity to engage in activities that allow them to relax from the structure of the classroom for a short while. When properly clothed, elementary school-aged children can participate in safe, vigorous play in an outdoor environment in most weather conditions.

- When temperatures fall below 30 degrees including the wind chill, students may be kept indoors (“feels like” temperature based on www.weather.com for zip code 86040).
- It is necessary for students to come to school wearing appropriate clothing for cold weather activities. It is the parent/guardian’s responsibility to ensure their children come to school dressed appropriately for the weather.
- Parents may request their child stay inside rather than play outside if the child should not participate in outdoor activities due to health. This request should be accompanied by a doctor’s note.

Inclement Weather

Call Emergency Weather Hot Line (928) 608-4100 (option 1)

District web Page Go to: <http://www.pageud.org>

DRESS CODE POLICY

Students and their parents/guardians have the responsibility to be aware of the school’s specific dress code and to conform to these requirements. If a student or parent has any questions about whether specific attire or accessories are in compliance with this dress code, they should contact an Assistant Principal prior to wearing such attire or accessory to ensure compliance.

On campus, the faculty, staff, and administration have the responsibility to interpret and enforce this policy. Each year parents ask for guidelines as they help students select appropriate attire for school. School pride, morale and image are influenced by the general appearance of students. PUSD wants to provide opportunities for students to express themselves within the set of parameters listed below:

The school is not responsible for the storage, inventory, or safekeeping of any confiscated item; this includes hats and electronic devices.

**** ALL RULES APPLY TO BOYS AND GIRLS****

APPROPRIATE DRESS:

Dressing in a manner that may result in a **distraction or disruption** of a safe environment is considered inappropriate. Attire that suggests involvement in gang activity or any apparel that is suggestive, obscene, lewd, shows vulgar language or symbols, or shows symbols or language relating to or promoting sex, drugs, tobacco, weapons, violence, or alcohol on clothing are prohibited. Students should realize that brief and revealing clothing are not appropriate in school. The following is a **general guide** that may be used in helping the student select appropriate clothing.

Minimum Dress & Grooming Code:

Tops:

- Tops that reveal bra straps, cleavage, bare midriffs or bare backs will not be allowed.
- Tops may not be see through.
- No tube or halter tops.
- No strapless tops.

Pants:

- Pants must be pulled up, with no undergarments exposed. May not have holes, rips or tears which expose undergarments.

Shorts:

- Must be fitted at the waist and conceal all undergarments.
- Must be at a reasonable and appropriate length.

Skirts, Dresses, Jumpers, Shirts, Sports Wear:

- Must be at a reasonable and appropriate length. No strapless dresses.

Headwear:

- Must not show any gang affiliation or inappropriate subject matter. Hoods are not to be worn in the building.

Miscellaneous:

- No attire with lettering or drawings which depict sexually suggestive expressions or actions, profanity, violence, weapons, obscenity, drugs, alcohol or tobacco shall be worn.
- Torn or radically altered clothing is not permitted.
- The school reserves the right to restrict clothing if it has become a symbol for gangs in the community and/or surrounding areas.
- Gang related symbols or insignias on books, caps, belongings or apparel are not allowed.
- No attire or adornments disruptive to the educational environment.

SECTION II

PAGE UNIFIED SCHOOL DISTRICT NO. 8 STUDENT ATTENDANCE PROCEDURES

Attendance

School attendance is very important. Children are required by Arizona Statute §15-802 and Navajo Nation Truancy Law (Title 10 N.N.C. §118, 502, 503) to attend school. Students who are absent miss out on educational, social, and physical development. Absences shall be excused only for necessary and important reasons such as: illness, bereavement, other family emergencies, and observances of family's religious beliefs. However, a sick child who is in school will also miss out, and if the child is contagious, it can be harmful to other students. If your child is running a fever, or has a contagious illness, please keep him/her at home. Students who have excessive absences may be subject to the following: disciplinary actions, parent notification, home visit; referral to tribal juvenile authorities, and/or social services ref. Title 17 N.N.C. §118, 222 and 223 and ARS §15-803. Any Navajo minor residing in the Navajo Nation who violates the provisions of this section shall be subject to the jurisdiction of the Family Courts of the

We are required by law to report the specific reasons for absences and we also are required to make a reasonable effort to contact parents if a child is absent without prior notice. If you know your child will be out prior to their absence, it is requested that you contact our office at 608-. If your child is absent unexpectedly, please send a note with your child upon his return to school so that our reporting procedures can be updated. An e-mail is also acceptable. Unreported absences will remain unexcused until the office receives a note from the parent or doctor. Please give the following information:

- Your child's first and last name
- Your child's teacher and grade
- The reason for the absence

TYPES OF ABSENCES

- Excused Absences: The following are examples of absences considered excused: illness/doctor's appointment/clinic visit; death in the family; religious ceremony; school activity; inclement weather; etc. (please see attendance monitor for more information)
- Unexcused Absences: The Arizona Department of Education states, if an absence occurs relating to any term or condition that is not specifically designated herein, the absence shall be counted as unexcused such as when a child comes to school with no documentation of absences; babysitting, missed the bus, or going to town, etc.

TARDINESS

It is important to be responsible and "on-time" during the school day when going to all of your classes. Loss of instructional time results in loss of learning and in the number of instructional hours required by the state of Arizona. Time lost from being late to class can be made up during the student's lunch time in the teacher's class. Unexcused tardiness to class will be handled within the classroom environment. Parents will be notified of excessive tardiness. Excessive tardiness may result in an intervention plan or disciplinary action as deemed appropriate. All students should arrive at school prior to the beginning of instruction.

1. Definitions:

- a. Absences for K-8 Students - is defined as a student not being present in his/her assigned classroom during the assigned period or an elementary student missing 25% or more of the school day.
- b. Absences for 9-12 (High School Students) - is defined as missing one period during the school day. No absence will be excused without the student first checking out at the school office and returning with written verification of an appointment (i.e., medical, dental, or legal). Upon return to campus, students must sign in through the front office.
- c. Cumulative Absences - the total number of days or class periods missed in a school year.
- d. Consecutive Absences - series of days or class periods in a row when a student is absent.
- e. Emancipated Students - Eighteen-year-old students may assume the responsibility of notifying the school of an absence with approval of the administration and appropriate emancipation documentation.
- f. Truant - an unexcused absence for at least 25% of the day for grades K-8 or one class period for 9-12.
- g. Habitually truant - a child who is truant for at least five school days within a school year. (A.R.S. 15-803).
- h. Truant child - a child who is between six and sixteen years of age and who is not in attendance at a public or private school during the hours that school is in session, unless excused as provided by law.
- i. Excused absence - an absence approved by the building principal or designee. All other absences are unverified and constitute truancy. Excused absences include but are not limited to: individual illness or health conditions, serious illness in the immediate family (documentation required), religious holidays, death in the immediate family, school sanctioned activities, and medical or dental appointments (documentation required).
- j. Unverified Absence - is any absence for at least 25% of the day for grades K-8 or from one or more class periods 9-12, which has not been verified by a parent or guardian or excused. Students absent for 10 (ten) consecutive days, except for excused absences identified herein, shall be withdrawn from the school effective the last day of attendance or reported unexcused absence, pursuant to A.R.S. 15-901(a).
- k. Excessive (Chronic) absenteeism - Absences may be considered excessive when the number of absent days exceeds ten percent of the number of required attendance days. (A.R.S., 15-803).
- l. Religious Purposes - Pursuant to A.R.S., 15-806(A) Students may be granted release time to attend religion classes near the school campus. Specific to religious purposes, pursuant to A.R.S. 15-806(A)(1-2), these conditions will include a written consent from the person who has legal custody of the student

and said religious exercises must take place at a suitable place away from school property.

- m. Withdrawals - includes students formally withdrawn from schools and students absent for ten consecutive school days, except for excused absences as identified by the department of education. For computation purposes, the effective date of withdrawal shall be retroactive to the last day of actual attendance of the student.
- n. Verified Absences - When a student is absent, parents are required to call/send a note to the attendance department in order to validate the reason for your child's absence. We call this process "Absence Verification." Parents are encouraged to call in on or prior to the day of the absence to make the school aware. An absence must be verified within three school days.

2. Procedures:

- a. Full day or class period unverified absences - auto phone call and email for each absence
- b. Four full day or class period with unverified or verified absences - When a student reaches four (4) cumulative unverified or verified absences, they will receive the 4-Day Absence Warning Letter. The parent/guardian will receive the letter and a survey via email (or U.S. Mail if email is not available).
- c. Six (6) cumulative unverified or verified absences - When a student reaches six (6) unverified or verified absences, they will receive the 6-Day Absence Final Warning Letter. The parent/guardian will receive the letter via email (or U.S. Mail if email is not available). The student will be referred to administration for excessive absenteeism. An attendance meeting will be scheduled with building administration and documentation for absences requested. An attendance contract will be issued.
- d. 8+ Absences - Once a student reaches 8 or more cumulative unverified or verified absences, the student will be referred to a district attendance hearing. The city attorney's office or Navajo Nation Peacemaking court will be contacted, pursuant ARS 15-803; Navajo Nation 10-NNC503.

Consecutive Absences

- a. Student Support Services will call the parents/guardians when a student has reached four full day consecutive(4) absences.
- b. There will be a home visit conducted by Student Support Services when a student reaches eight (8) full day consecutive absences.
- c. 10 Consecutive Absences - After 10 consecutive days of absences per semester, the state requires schools to automatically withdraw the student.

2. "Truant" means an unexcused absence for at least one class period during the day.
3. "Truant child" means a child who is between six and sixteen years of age and who is not in attendance at a public or private school during the hours that school is in session, unless excused as provided by this section.

ARS 8-304, 203 & 901

1. **8-304. Investigation of alleged acts of delinquency, dependency and incorrigibility**
 - a. The law enforcement officer having jurisdiction in the place in which an act of delinquency or incorrigibility is alleged to have occurred is responsible for the complete investigation surrounding the alleged commission of the act.
 - b. A department investigator is responsible for the complete investigation of all complaints of alleged dependency, and a criminal conduct allegation shall be investigated in cooperation with the appropriate law enforcement agencies and according to the protocols established pursuant to section 8-817. The department shall be responsible for the disposition of such a child unless the matter requires the intervention of the court.

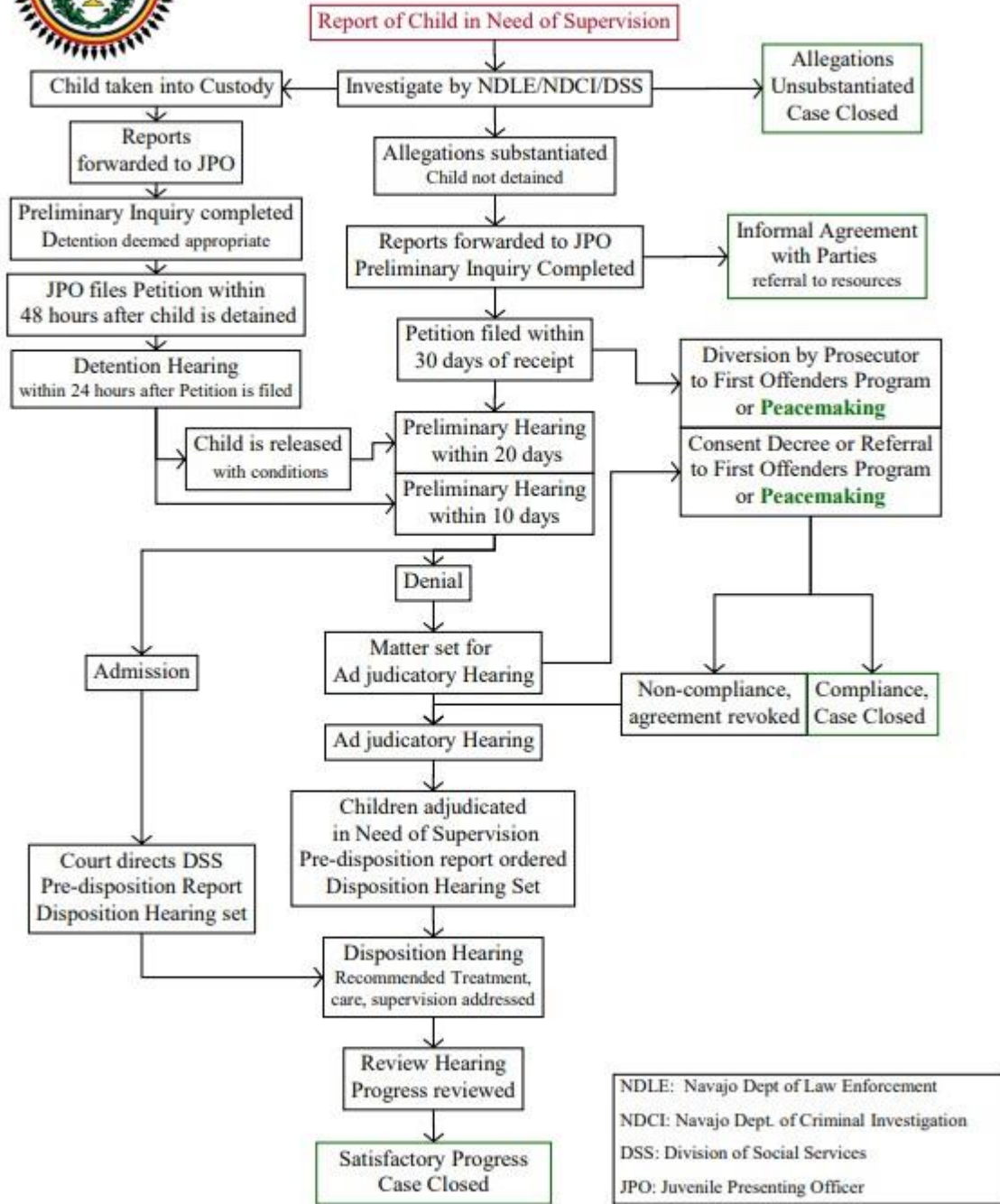
Discipline

The district will publish attendance and/or excessive tardiness and discipline procedures and disseminate them to all students and parents. Unexcused absences and/or excessive tardiness may result in the student receiving disciplinary action.

1. Phone and/or written notification to parents/guardians
2. School detention (lunch and/or after school)
3. In-school suspension
4. Summer programming
5. Loss of credit and/or audit status. *(Page High School)*
6. Withdrawal and re-enrollment process through each school office.
7. Citation by a law enforcement officer in accordance with Arizona truancy laws.
8. Alternative placement



Navajo Nation Juvenile Justice System: Children in Need of Supervision



The Navajo Nation Juvenile Justice System: Children in Need of Supervision Flowchart was created by the Navajo Nation Criminal Justice Planning Committee (NNCJPC). Copies of this chart may be reproduced. Attribution should be given to NNCJPC. For questions contact: Navajo Nation Criminal Justice Planning Committee, Office of the Chief Prosecutor, P.O. Box 3779, Window Rock, AZ 86515, 520-871-6622. Chart printed September 2001

DISCLAIMER: IT IS INTENDED THAT ALL PAGE UNIFIED SCHOOL DISTRICT HANDBOOKS COMPLY WITH THE POLICIES ESTABLISHED BY THE GOVERNING BOARD OF THE PAGE UNIFIED SCHOOL DISTRICT. IN THE EVENT THAT ANYTHING IN THIS HANDBOOK CONFLICTS WITH CURRENT DISTRICT POLICY, DISTRICT POLICY WILL PREVAIL.

PAGE UNIFIED SCHOOL DISTRICT APPROACH TO DISCIPLINE

In order to have a holistic approach to student conduct, Page Unified School District implements the use of Positive Behavioral Interventions and Supports (PBIS), traditional discipline practices, and restorative practices. Positive Behavioral Interventions and Supports (PBIS) is an approach schools use to promote school safety and good behavior. With PBIS, schools teach kids about behavior expectations and strategies. The focus of PBIS is prevention, not punishment. Traditional discipline practices give students an appropriate and progressive consequence for their actions which are against the student rules. Restorative practices focus on building, maintaining, and when necessary, repairing relationships among all members of the school community. The restorative approach is a set of guiding principles including respect, relationships, responsibility, repair, and reintegration practices for the school community.

Restorative practices give priority to repairing harm done to individuals and school communities and providing student accountability by assuming responsibility and taking action to repair the harm they caused. Page Unified School District utilizes restorative practices as a method of attempting to restore damaged relationships and to educate students. Restorative practices generally take place after a student has been administered and served a consequence for violating the code of conduct.

By using the three systems of PBIS, traditional discipline and restorative practices, Page Unified School District can actively prevent, respond and repair harm done to the learning environment. These three systems live in connection with one another and one alone cannot effectively work in isolation.

PBIS

All schools in the Page Unified School District are Positive Behavioral Intervention and Support (PBIS) schools. PBIS places emphasis on school-wide systems of support that include proactive strategies for defining, teaching, and supporting appropriate student behaviors to create positive school culture. Our school-wide expectations are that our students will display THE DUST DEVIL WAY:

- Be Kind
- Be Brave
- Work Hard

Page Elementary will define, teach, and reinforce these expectations to all students. The Behavior Flow Chart guides our response to behavior issues, and the Behavior Expectation Matrix defines the behaviors Desert View Intermediate expects from all of our students. Our goal is to have our students display The Dust Devil Way in everything they do at Page Elementary and in the community.

Page Elementary's Desired Outcomes

- Increased academic achievement and performance
- Decreased classroom disruptions and office discipline referrals
- Improved school climate and safety

To make these desired outcomes happen, Page Elementary has a systematic approach to proactive, school-wide discipline based on a Multi-tiered System of Supports (MTSS). Data will be used to track, identify, and respond to school-wide behavior issues and trends.

DICIPLINE MATRICES WILL BE AT THE END OF THE HANDBOOK

SECTION III

IJND-R ©

REGULATION

TECHNOLOGY RESOURCES

(Movies/Videos/Electronic Materials)

Movies, videos and electronic materials with ratings other than for general audiences of all ages are not to be shown in classrooms or at any District facility (this includes buses and motels where students are present) except when:

- A. The movie, video or electronic material has been previewed by the teacher or other certificated staff member.
- B. The movie, video or electronic material has been determined to not contain material that is objectionable or inappropriate for the age group to which it is intended to be shown.
- C. The responsible school administrator has approved the use of the movie, video or electronic material prior to its showing.
- D. The teacher or other certificated staff member has provided advance notification to each student's parent(s), or other responsible adult, of the title of the movie, video or electronic material and the date on which it will be shown.
- E. When a movie, video or electronic material has a rating the above advance notification will include the rating and the source providing the rating.
- F. A student whose parent(s) or other responsible adult has provided notice of their disapproval will not be permitted to view the movie, video or electronic material.

Parents or guardians have the right to have advance access to instructional materials, learning materials and activities currently in use, or being considered for use, in the District.

Parents have the right to request that their child not view any movie or video, regardless of its rating or the purpose for which it is to be shown.

A parent or guardian who objects to any learning material or activity on the basis that it is harmful includes objection to a material or activity because it questions beliefs or practices in sex, morality, or religion or, because of sexual content, violent content, or

DISCLAIMER: IT IS INTENDED THAT ALL PAGE UNIFIED SCHOOL DISTRICT HANDBOOKS COMPLY WITH THE POLICIES ESTABLISHED BY THE GOVERNING BOARD OF THE PAGE UNIFIED SCHOOL DISTRICT. IN THE EVENT THAT ANYTHING IN THIS HANDBOOK CONFLICTS WITH CURRENT DISTRICT POLICY, DISTRICT POLICY WILL PREVAIL.

profane or vulgar language, may request to withdraw that student from the activity or from the class or program in which the material is used and request an alternative assignment.

“The District shall obtain signed, written consent from a student’s parent or guardian before using video, audio, or electronic materials that may be inappropriate for the age of the student. “

JICK-EB ©

STUDENT BULLYING / HARASSMENT / INTIMIDATION

(To be displayed in school buildings and in student handbooks)

The Governing Board of the Page Unified School District believes it is the right of every student to be educated in a positive, safe, caring, and respectful learning environment. The Governing Board further believes a school environment that is inclusive of these traits maximizes student achievement, fosters student personal growth, and helps a student build a sense of community that promotes positive participation as citizens in society.

To assist in achieving a school environment based on the beliefs of the Governing Board, bullying, harassment, or intimidation in any form will not be tolerated.

Bullying: Bullying may occur when a student or group of students engages in any form of behavior that includes such acts as intimidation and/or harassment that:

- A. has the effect of physically harming a student, damaging a student's property, or placing a student in reasonable fear of harm or damage to property,
- B. is sufficiently severe, persistent or pervasive that the action, behavior, or threat creates an intimidating, threatening, or abusive environment in the form of physical or emotional harm,
- C. occurs when there is a real or perceived imbalance of power or strength, or
- D. may constitute a violation of law.

Bullying of a student or group of students can be manifested through written, verbal, physical, or emotional means and may occur in a variety of forms including, but not limited to:

- A. verbal, written/printed or graphic exposure to derogatory comments, extortion, exploitation, name calling, or rumor spreading either directly through another person or group or through cyberbullying,
- B. exposure to social exclusion or ostracism,
- C. physical contact including but not limited to pushing, hitting, kicking, shoving, or spitting, and

D. damage to or theft of personal property.

Cyberbullying: Cyberbullying is, but not limited to, any act of bullying committed by use of electronic technology or electronic communication devices, including telephonic devices, social networking and other Internet communications, on school computers, networks, forums and mailing lists, or other District-owned property, and by means of an individual's personal electronic media and equipment.

Harassment: Harassment is intentional behavior by a student or group of students that is disturbing or threatening to another student or group of students. Intentional behaviors that characterize harassment include, but are not limited to, stalking, hazing, social exclusion, name calling, unwanted physical contact and unwelcome verbal or written comments, photographs and graphics. Harassment may be related, but not limited to, race, religious orientation, sexual orientation, cultural background, economic status, size or personal appearance. Harassing behaviors can be direct or indirect and by use of social media.

Intimidation: Intimidation is intentional behavior by a student or group of students that places another student or group of students in fear of harm to person or property. Intimidation can be manifested emotionally or physically, either directly or indirectly, and by use of social media.

Students are prohibited from bullying, harassment, or intimidation on school grounds, school property, school buses, at school bus stops, at school-sponsored events and activities, and through the use of electronic technology or electronic communication equipment on school computers, networks, forums, or mailing lists.

Disciplinary action may result for bullying, harassment, or intimidation which occurs outside of the school and the school day when such acts result in a substantial physical, mental, or emotional negative effect on the victim, while on school grounds, school property, school buses, at school bus stops, or at school-sponsored events and activities, or when such act(s) interfere with the authority of the school system to maintain order. All suspected violations of law will be reported to local law enforcement.

Students who believe they are experiencing being bullied, harassed, or intimidated or suspect another student is bullied, harassed, or intimidated should report their concern to any staff member of the School District. School personnel are to maintain appropriate confidentiality of the reported information.

Reprisal by any student directed toward a student or employee related to the reporting of a case or a suspected case of bullying, harassment, or intimidation shall not be tolerated, and the individual(s) will be subject to the disciplines set out in applicable District policies and administrative regulations.

Students found to be bullying, harassing, or intimidating others will be disciplined up to and including suspension or expulsion from school.

Knowingly submitting a false report under Policy JICK or this exhibit shall subject the student to discipline up to and including suspension or expulsion. Where disciplinary action is necessary pursuant to any part of Policy JICK or this exhibit, relevant District

DISCLAIMER: IT IS INTENDED THAT ALL PAGE UNIFIED SCHOOL DISTRICT HANDBOOKS COMPLY WITH THE POLICIES ESTABLISHED BY THE GOVERNING BOARD OF THE PAGE UNIFIED SCHOOL DISTRICT. IN THE EVENT THAT ANYTHING IN THIS HANDBOOK CONFLICTS WITH CURRENT DISTRICT POLICY, DISTRICT POLICY WILL PREVAIL.

policies shall be followed.

Law enforcement authorities shall be notified any time District officials have a reasonable belief that an incidence of bullying, harassment, or intimidation is a violation of the law.

Annual Public Notification of Nondiscrimination

Page Unified School District does not discriminate on the basis of race, color, national origin, gender, age or disability in admission to its programs, services, or activities, in access to them, in treatment of individuals, or in any aspect of their operations. The **Page Unified School District** also does not discriminate in its hiring or employment practices.

This notice is provided as required by Title VI of the Civil Rights Act of 1964, Section 504 of the Rehabilitation Act of 1973, Title IX of the Education Amendments of 1972, the Age Discrimination Act of 1975, and the Americans with Disabilities Act of 1990. Questions, complaints, or requests for additional information regarding these laws may be forwarded to the designated compliance coordinator.

Bryce Anderson, Superintendent
500 South Navajo Drive Page, Arizona. (928)608-4117

VIDEO DISCLAIMER

As part of our teacher induction program, we may have teachers video themselves on occasion for reflective coaching purposes. Because of this, we would like to inform you that your child may be videotaped during a class session to be used for teacher observation. It will not be placed on any websites or outside resources. By signing the signature page at the end of this handbook and returning it, you are giving permission for video in the classroom to be used for teacher instructional purposes.

ANNUAL NOTIFICATION **PROTECTION OF PUPIL RIGHTS AMENDMENT (PPRA)**

Consent before students are required to submit to a survey that concerns one or more of the following protected areas (“protected information survey”) if the survey is funded in whole or in part by a program of the U.S. Department of Education (ED) –

1. Political affiliations or beliefs of the student or student’s family;
2. Mental or psychological problems of the student or student’s family;
3. Sex behavior or attitudes;
4. Illegal, anti-social, self-incriminating or demeaning behavior;
5. Critical appraisals of other with whom respondents have close family relationships;

DISCLAIMER: IT IS INTENDED THAT ALL PAGE UNIFIED SCHOOL DISTRICT HANDBOOKS COMPLY WITH THE POLICIES ESTABLISHED BY THE GOVERNING BOARD OF THE PAGE UNIFIED SCHOOL DISTRICT. IN THE EVENT THAT ANYTHING IN THIS HANDBOOK CONFLICTS WITH CURRENT DISTRICT POLICY, DISTRICT POLICY WILL PREVAIL.

6. Legally recognized privileged relationships, such as with lawyers, doctors or ministers;
7. Religious practices, affiliations or beliefs of the student or parts; or
8. Income, other than as required by law to determine program eligibility

Receive notice and opportunity to opt a student out of –

1. Any other protected information survey, regardless of funding;
2. Any non-emergency, invasive physical exam or screening required as a condition of attendance, administered by the school or its agent and not necessary to protect the immediate health and safety of a student, except for hearing, vision or scoliosis screenings, or any physical exam or screening permitted or required under State law; and
3. Activities involving collection, disclosure or use of personal information obtained from student for marketing or to sell or to otherwise distribute the information to others.

Receive/Inspect, upon request and before administration or use –

1. Protected information surveys of students;
2. Instruments used to collect personal information from students for any of the above marketing, sales or other distribution purposes; and
3. Instructional material used as part of the educational curriculum.

These rights transfer from the parents to a student who is 18 years old or an emancipated minor under State law.

The Page Unified School District (PUSD) will develop and adopt policies, in consultation with parents, regarding these rights, as well as arrangements to protect student privacy in the administration of protected information surveys and the collection, disclosure, or use of personal information for marketing, sales or other distribution purposes. PUSD will directly notify parents of these policies at least annually at the start of each school year and after any substantive changes. PUSD will directly notify parents of these policies at least annually at the start of each school year and after any substantive changes. PUSD will also directly notify parents at the start of each school year of the specific or approximate dates of the following activities and provide an opportunity to opt a student out of participating in:

- Collection, disclosure, or use of personal information for marketing, sales or other distribution.
- Administration of any protected information survey not funded in whole or in part by ED
- Any non-emergency, invasive physical examination or screening as described above.

Parents who believe their rights have been violated may file a complaint with:

*Family Policy Compliance Office
U.S. Department of Education
400 Maryland Avenue, SW
Washington, D.C. 20202*

Annual Notification
Family Education Rights and Privacy Act of 1974 (FERPA)

In the District's efforts to comply with the provisions of the Family Educational Rights and Privacy Act (FERPA), the Individuals with Disabilities Education Act (IDEA), the Uniting and Strengthening America by Providing Appropriate Tools Required to Intercept and Obstruct Terrorism Act of 2001 (USA PATRIOT ACT) and the No Child Left Behind Act of 2001 (NCLB) in the establishment, maintenance, correction and disposition of student records, this is notification to you of the following rights:

1. The right of a student's parent/guardian and eligible student (over 18) to inspect and review the student's education records.
2. The intent of PUSD to limit disclosure of information contained in a student's education record except: 1) by prior written consent of the student's guardian or the eligible student, 2) as directory information, or 3) under certain limited circumstances as permitted by FERPA.
3. The rights of a student's guardians or eligible student to seek to correct parts of the student's records which he or she believes to be inaccurate, misleading or in violation of the student's rights. This right includes the right to a hearing to present evidence that the records should be changed if the district decides not to alter it according to the request.
4. The right of any person to file a complaint with the office of FERPA, Washington, D.C. if the Page Unified School District violates the FERPA agreement.

*Family Policy Compliance Office
US Dept. of Education
400 Maryland Avenue, SW
Washington, D.C. 20202*

Parents/Guardians or eligible students may obtain a copy of this policy and more in the Superintendent's Office, 500 S. Navajo Dr., Page, Arizona.

DISCLAIMER: IT IS INTENDED THAT ALL PAGE UNIFIED SCHOOL DISTRICT HANDBOOKS COMPLY WITH THE POLICIES ESTABLISHED BY THE GOVERNING BOARD OF THE PAGE UNIFIED SCHOOL DISTRICT. IN THE EVENT THAT ANYTHING IN THIS HANDBOOK CONFLICTS WITH CURRENT DISTRICT POLICY, DISTRICT POLICY WILL PREVAIL.

EXHIBIT

**STUDENT BULLYING / HARASSMENT /
INTIMIDATION**

**(To be displayed in school buildings
and in student handbooks)**

The Governing Board of the Page Unified School District believes it is the right of every student to be educated in a positive, safe, caring, and respectful learning environment. The Governing Board further believes a school environment that is inclusive of these traits maximizes student achievement, fosters student personal growth, and helps a student build a sense of community that promotes positive participation as citizens in society.

To assist in achieving a school environment based on the beliefs of the Governing Board, bullying, harassment, or intimidation in any form will not be tolerated.

Bullying: Bullying may occur when a student or group of students engages in any form of behavior that includes such acts as intimidation and/or harassment that

- A. has the effect of physically harming a student, damaging a student's property, or placing a student in reasonable fear of harm or damage to property,
- B. is sufficiently severe, persistent or pervasive that the action, behavior, or threat creates an intimidating, threatening, or abusive environment in the form of physical or emotional harm,
- C. occurs when there is a real or perceived imbalance of power or strength, or
- D. may constitute a violation of law.

Bullying of a student or group of students can be manifested through written, verbal, physical, or emotional means and may occur in a variety of forms including, but not limited to

- A. verbal, written/printed or graphic exposure to derogatory comments, extortion, exploitation, name calling, or rumor spreading either directly through another person or group or through cyberbullying,
- B. exposure to social exclusion or ostracism,
- C. physical contact including but not limited to pushing, hitting, kicking, shoving, or spitting, and
- D. damage to or theft of personal property.

Cyberbullying: Cyberbullying is, but not limited to, any act of bullying committed by use of electronic technology or electronic communication devices, including telephonic devices, social networking and other Internet communications, on school computers, networks, forums and mailing lists, or other District-owned property, and by means of an individual's personal electronic media and equipment.

Harassment: Harassment is intentional behavior by a student or group of students that is disturbing or threatening to another student or group of students. Intentional behaviors that characterize harassment include, but are not limited to, stalking, hazing, social exclusion, name calling, unwanted physical contact and unwelcome verbal or written comments, photographs and graphics. Harassment may be related, but not limited to, race, religious orientation, sexual orientation, cultural background, economic status, size or personal appearance. Harassing behaviors can be direct or indirect and by use of social media.

Intimidation: Intimidation is intentional behavior by a student or group of students that places another student or group of students in fear of harm of person or property. Intimidation can be manifested emotionally or physically, either directly or indirectly, and by use of social media.

Students are prohibited from bullying, harassment, or intimidation on school grounds, school property, school buses, at school bus stops, at school-sponsored events and activities, and through the use of electronic technology or electronic communication equipment on school computers, networks, forums, or mailing lists.

Disciplinary action may result for bullying, harassment, or intimidation which occurs outside of the school and the school day when such acts result in a substantial physical, mental, or emotional negative effect on the victim, while on school grounds, school property, school buses, at school bus stops, or at school-sponsored events and activities, or when such act(s) interfere with the authority of the school system to maintain order. All suspected violations of law will be reported to local law enforcement.

Students who believe they are experiencing being bullied, harassed, or intimidated or suspect another student is bullied, harassed, or intimidated should report their concern to any staff member of the School District. School personnel are to maintain appropriate confidentiality of the reported information.

Reprisal by any student directed toward a student or employee related to the reporting of a case or a suspected case of bullying, harassment, or intimidation shall not be tolerated, and the individual(s) will be subject to the disciplines set out in applicable District policies and administrative regulations.

Students found to be bullying, harassing, or intimidating others will be disciplined up to and including suspension or expulsion from school.

Knowingly submitting a false report under Policy JICK or this exhibit shall subject the student to discipline up to and including suspension or expulsion. Where disciplinary action is necessary pursuant to any part of Policy JICK or this exhibit, relevant District policies shall be followed.

Law enforcement authorities shall be notified any time District officials have a reasonable belief that an incidence of bullying, harassment, or intimidation is a violation of the law.

SECTION IV

STUDENT RIGHTS

- Students have the right to a quality education in a clean, safe environment.
- Students have the right to be clearly informed about any rules for which they will be held accountable, to be informed of any charges which may be made against them, and ask for consideration of special circumstances.
- Students have the right of privacy of person, and freedom from unreasonable search and seizure of property unless school employees have reason to suspect that the health, safety, or welfare of students may be in danger.
- Students have a right to present a complaint or grievance when rights are violated by following the procedures outlined in the Page Elementary Student/Family Handbook.

STUDENT RESPONSIBILITIES

- Students have a responsibility to promote a clean, safe environment where a quality education can be delivered.
- Students have a responsibility to be informed of and follow the school's code of conduct outlined in the 2025-2026 Page Elementary Student/ Family Handbook.
- Students have a responsibility to avail themselves of a quality education by attending school regularly, completing assigned school work, and asking for consideration of special circumstances.
- Students have the responsibility to comply with the Page Unified School District Technology Resources Acceptable Use Policy as outlined in the Page Elementary Student/ Family Handbook. Violation of this Policy may constitute a criminal offense and result in disciplinary action and revocation of their use of district technology resources.

STUDENT LIABILITIES

- Students are liable for conduct that interferes with the educational process at Page Elementary
- Students will be subject to disciplinary procedures outlined in the Page Elementary Student/Family Handbook when they violate the school's code of conduct.

SIGNATURES:

I understand that I am responsible for *READING* the Student/Family Handbook. I also understand that I will be held accountable for the rights, responsibilities, and liabilities outlined in it.

Student signature

Date

I have *READ* the Page Elementary Student/Family Handbook. I understand that my child will be held accountable for the rights, responsibilities, and liabilities outlined in it.

Parent/Guardian signature

Date

DISCLAIMER: IT IS INTENDED THAT ALL PAGE UNIFIED SCHOOL DISTRICT HANDBOOKS COMPLY WITH THE POLICIES ESTABLISHED BY THE GOVERNING BOARD OF THE PAGE UNIFIED SCHOOL DISTRICT. IN THE EVENT THAT ANYTHING IN THIS HANDBOOK CONFLICTS WITH CURRENT DISTRICT POLICY, DISTRICT POLICY WILL PREVAIL.