

FACILITY COMMITTEE MEETING #14 / 04.21.2025

FACILITY COMMITTEE MEETING #14 / AGENDA



AGENDA

- DISCUSS KINGSTON COMMUNITY FEEDBACK
- WHAT DO WE WANT TO ASK IN A SURVEY?
- DISCUSS YOUR VISION FOR THE FUTURE
- REVIEW DISTRICT LEADERSHIP DISCUSSION

WHAT DO OUR KIDS NEED TO THRIVE?

- + CONSISTENCY
- + ACADEMIC OPPORTUNITIES
- + SAFETY
- +

DESCRIBE WHAT MAKES THE KINGSTON COMMUNITY UNIQUE OR SPECIAL.

- + CONNECTION TO THE TRIBES
- + TRAILS & WALKABILITY
- + STRONG SENSE OF COMMUNITY
- +

IF YOU COULD CHANGE ONE THING TO BENEFIT STUDENTS, WHAT WOULD IT BE?

- + LOOPING TEACHERS
- + MOVE OPTIONS TO A DIFFERENT HOME
- + LATER START TIME FOR THE HIGH SCHOOL
- + UPGRADE ATHLETIC FACILITIES
- + EQUAL ACCESS TO SPECIALTY PROGRAMS
- + SHIFT THE CULTURE AT THE MIDDLE SCHOOL
- +

SURVEY QUESTIONS

+ WHAT **OPPORTUNITIES** DO YOU SEE IN THE IDEA OF CREATING A 6-12 CAMPUS IN KINGSTON?

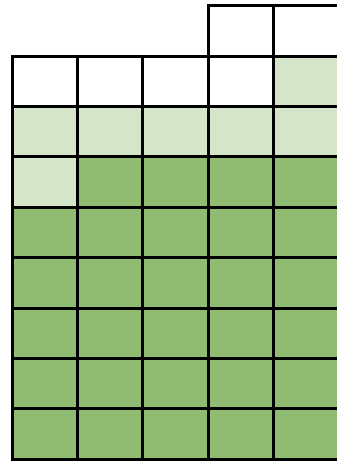
+ WHAT **CHALLENGES** DO YOU SEE IN THE IDEA OF CREATING A 6-12 CAMPUS IN KINGSTON?

+ DO YOU SUPPORT THE FURTHER EXPLORATION OF THE IDEA? WHY?

FACILITY COMMITTEE MEETING #14 / YOUR VISION FOR THE FUTURE

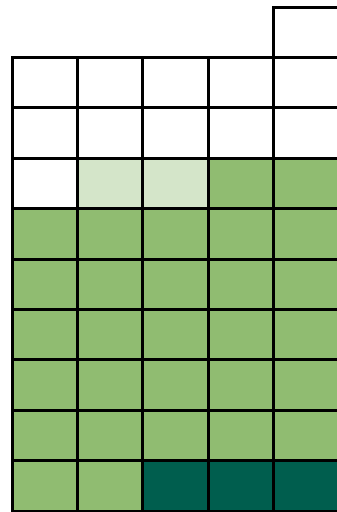
- + WHAT WOULD MAKE A COMPELLING VISION FOR THE FUTURE AT NKSD?
- + HOW DO WE BUILD ON THE ASSETS AND STRENGTHS OF THE DISTRICT?
- + HOW DO WE BEST UTILIZE DISTRICT FACILITIES AND PROPERTY?
- + HOW DO DISTRICT FACILITIES IMPACT THE COMMUNITY?

FACILITY COMMITTEE MEETING #14 / DISTRICT DISCUSSION



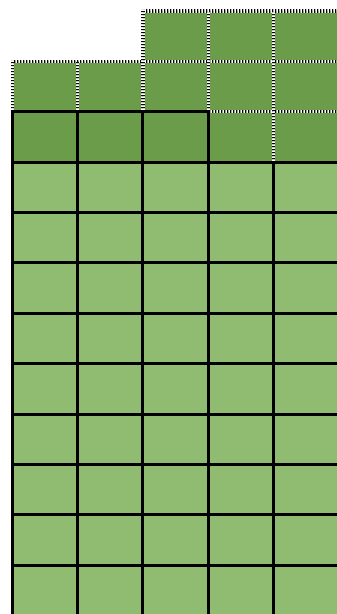
Suquamish ES		
Capacity	2025	2035
342	298	236

Years	Maint. & Repair Needs
1-6	\$8.6m
7-12	\$2.7m
13-18	\$1.4m



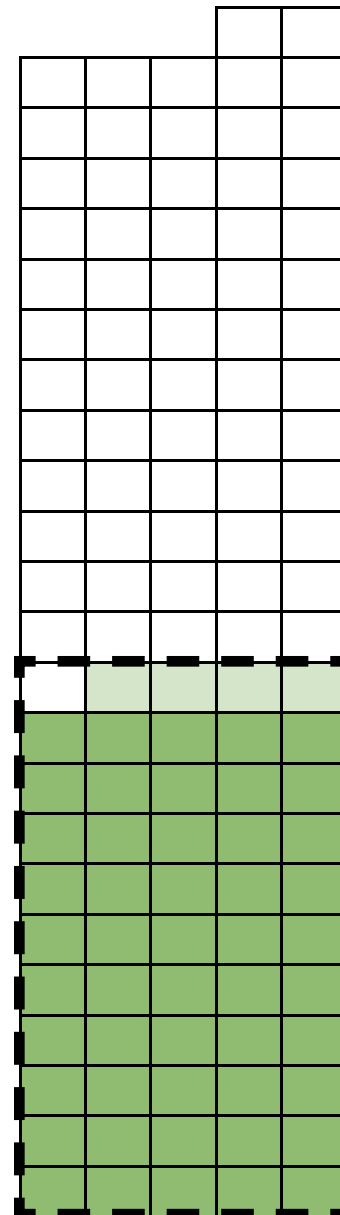
Wolfe ES		
Capacity	2025	2035
439	330	305

Years	Maint. & Repair Needs
1-7	\$2.7m
8-13	\$3.4m
14-20	\$10.1m



Gordon ES		
Capacity	2025	2035
382	357	456

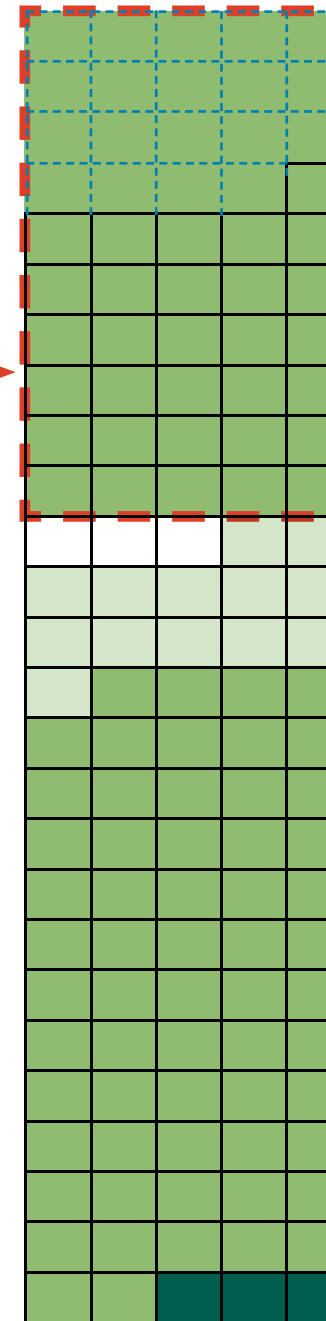
Years	Maint. & Repair Needs
1-7	\$1.3m
8-13	\$3.0m
14-20	\$13.2m



Kingston MS		
Capacity	2025	2035
996	461	426

Years	Maint. & Repair Needs
1-7	\$2.7m
8-13	\$8.6m
14-20	\$34.5m

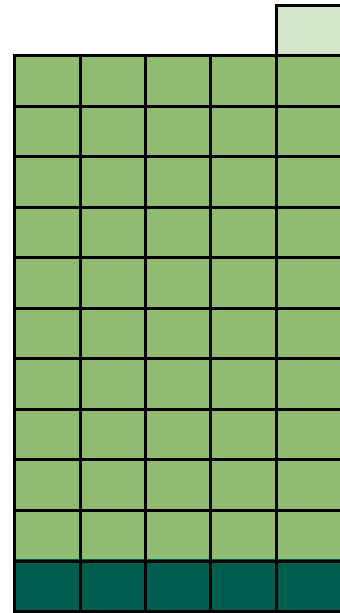
MIN. INITIAL EXPANSION



Kingston HS		
Capacity	2025	2035
800	554	461

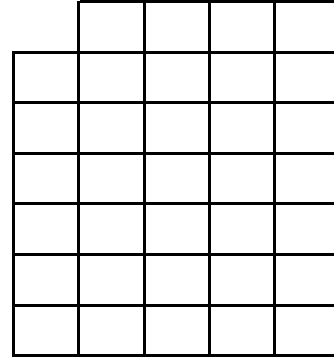
Years	Maint. & Repair Needs
1-7	\$5.8m
8-13	\$25.7m
14-20	\$2.7m

FACILITY COMMITTEE MEETING #14 / DISTRICT DISCUSSION



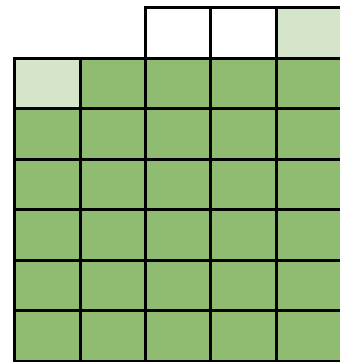
Vinland		
Capacity	2025	2035
530	526	498

Years	Maint. & Repair Needs
1-7	\$1.4m
8-13	\$3.0m
14-20	\$15m



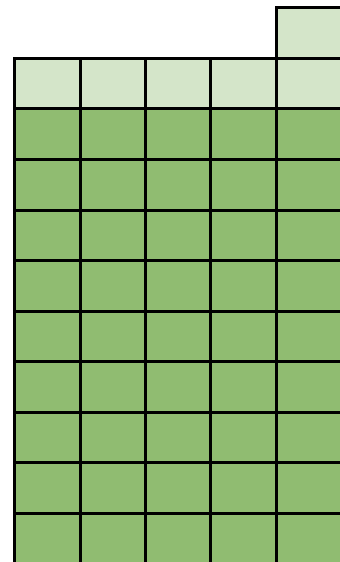
Pearson		
Capacity	2025	2035
302	283	266

Years	Maint. & Repair Needs
1-7	\$9.3m
8-13	\$1.5m
14-20	\$1.8m



Pousbo ES		
Capacity	2025	2035
460	458	409

Years	Maint. & Repair Needs
1-7	\$3.6m
8-13	\$13.1m
14-20	\$1m

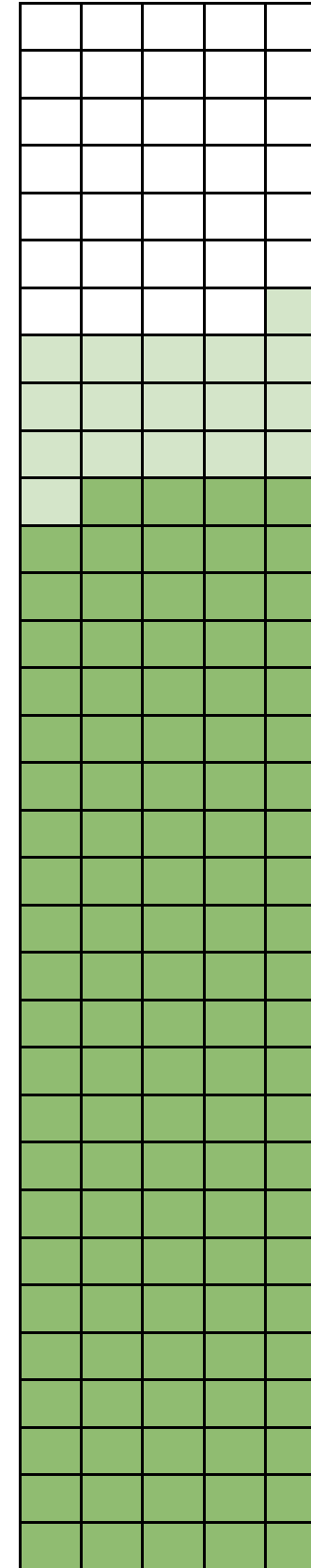
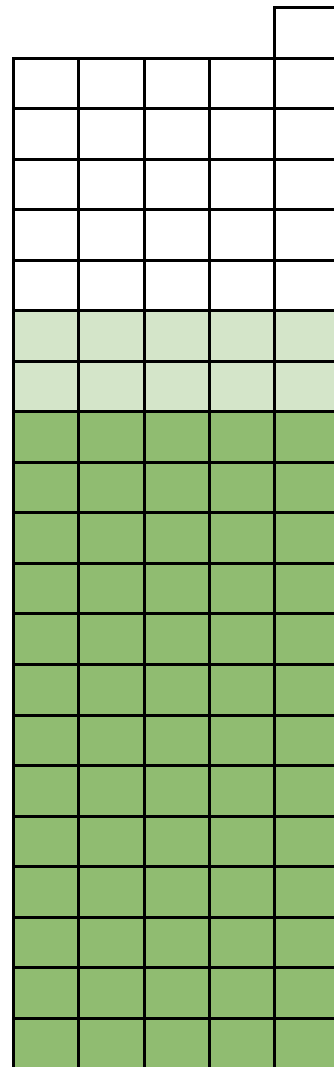


PMS Bldg 3		
------------	--	--

Years	Maint. & Repair Needs
1-7	\$7.6m
8-13	\$10m
14-20	\$1.4m

Pousbo MS		
Capacity	2025	2035
971	720	620

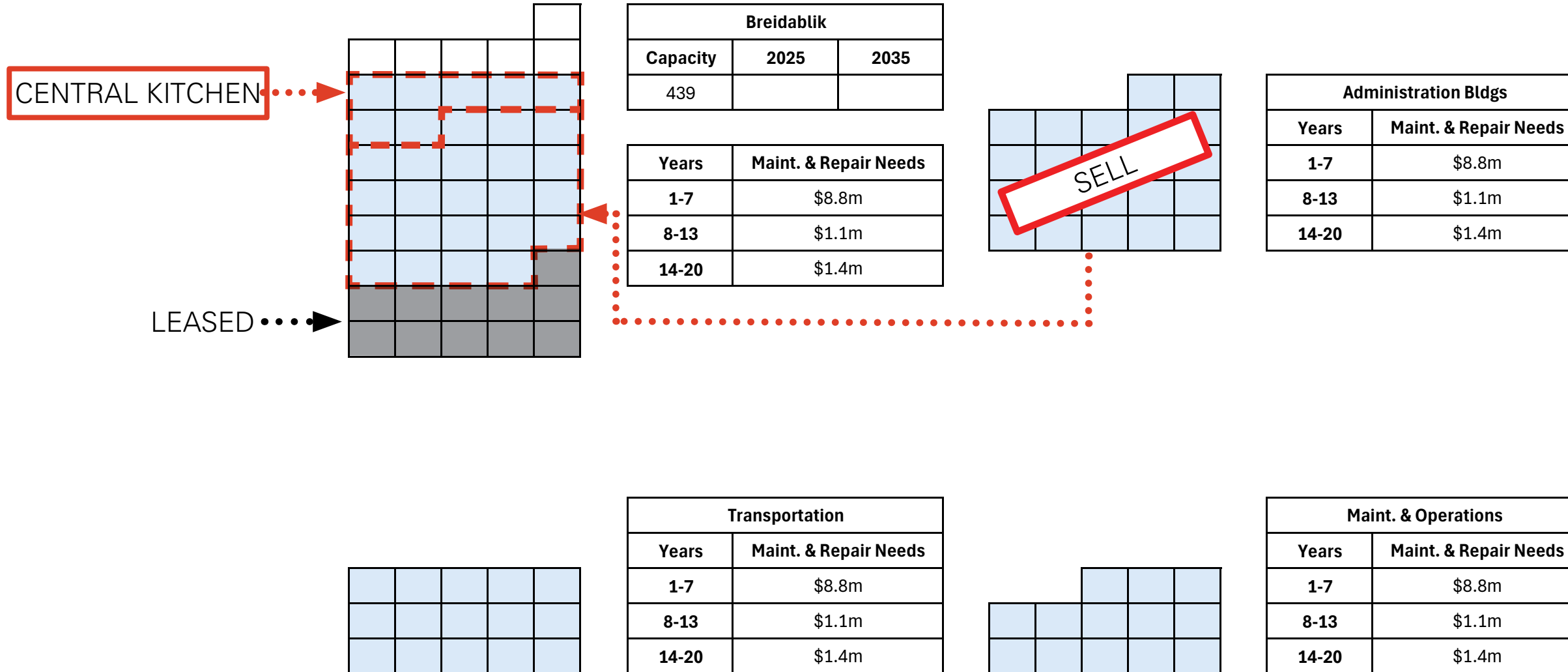
Years	Maint. & Repair Needs
1-7	\$11.3m
8-13	\$13.4m
14-20	\$2.3m



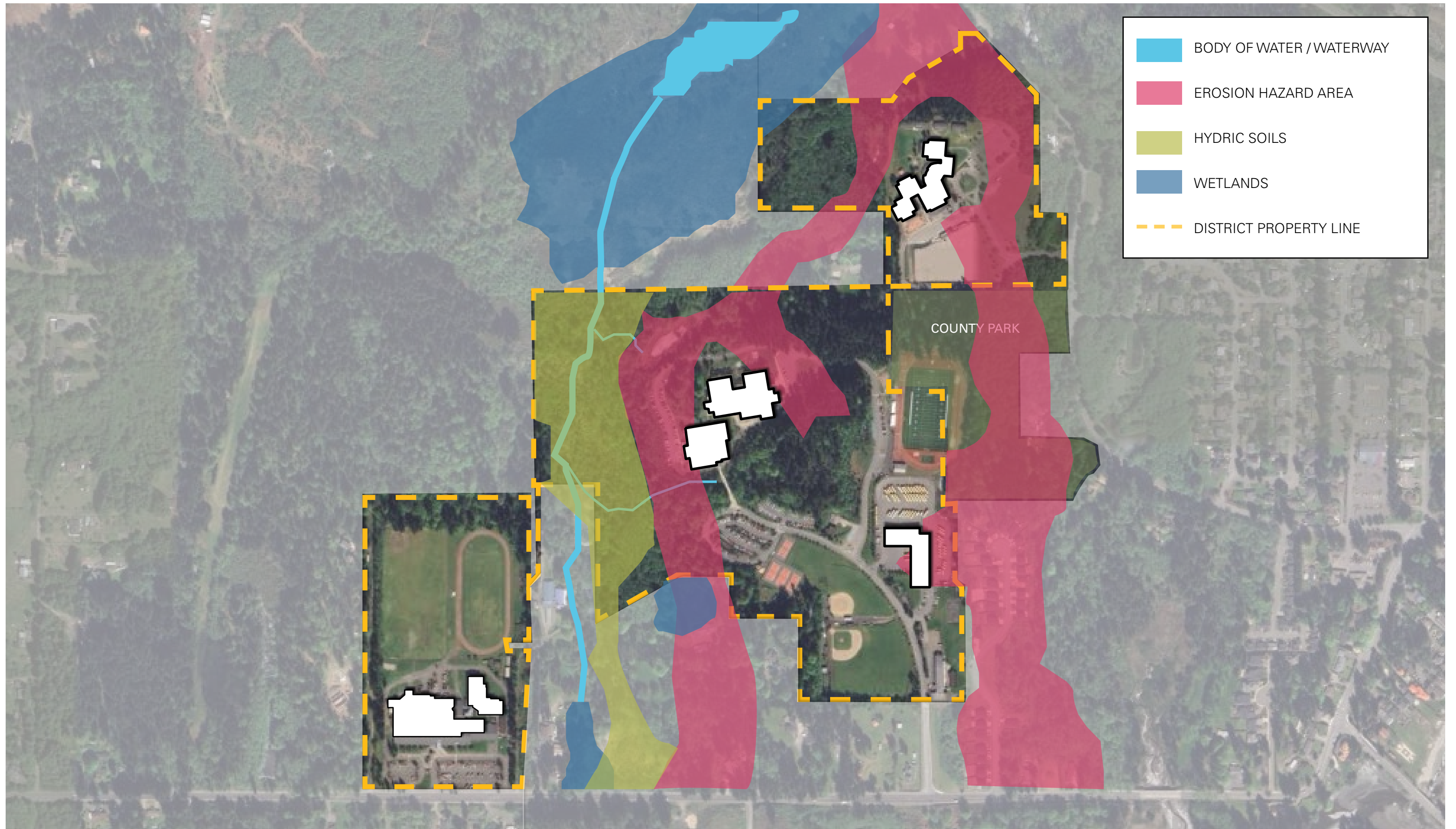
North Kitsap HS		
Capacity	2025	2035
1295	1029	897

Years	Maint. & Repair Needs
1-7	\$27m
8-13	\$21.2m
14-20	\$5m

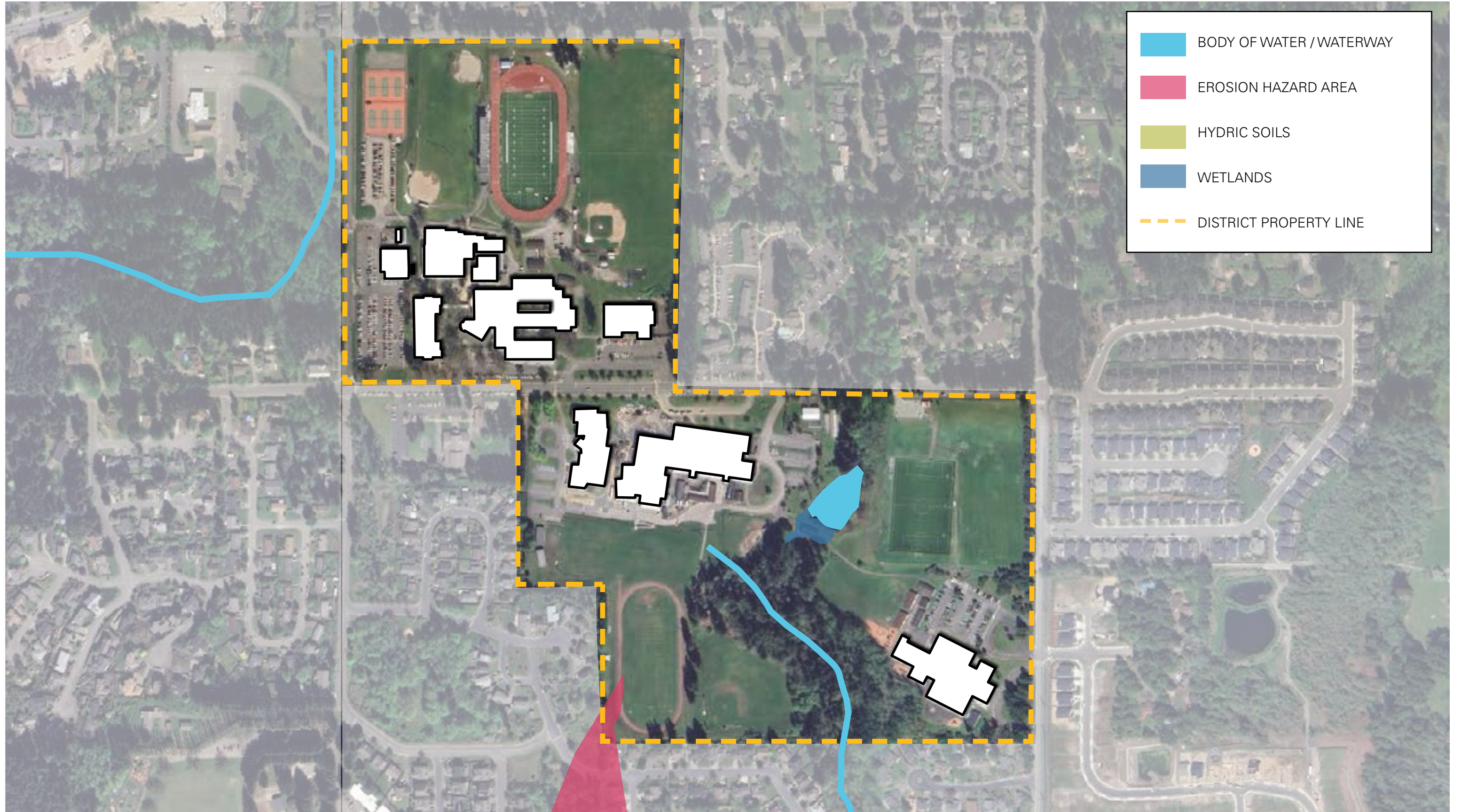
FACILITY COMMITTEE MEETING #14 / DISTRICT DISCUSSION



FACILITY COMMITTEE MEETING #14 / KINGSTON CAMPUS



FACILITY COMMITTEE MEETING #14 / POULSBO CAMPUS



NEXT STEPS /