

25
26



Leavenworth Pioneers



Course Catalog

Table of Contents

Academic Information & Requirements: page 2

Graduation Requirements: pages 3 - 4

Advanced Sequence of Classes: page 5

Policies & Procedures: page 6 - 7

Course Options by Subject Area

- English/Language Arts: pages 8 - 9
- Mathematics: pages 10 - 11
- Science: pages 12 - 13
- Social Studies: pages 14 - 15
- Physical Education: page 16
- Visual Arts: page 17
- Music Arts: page 18
- Theater Arts: page 19
- Practical Arts
 - Business Discovery Trail: pages 20 - 21
 - Media & Technology Discovery Trail: pages 21 - 22
 - Family & Consumer Science Discovery Trail: pages 22 - 23
 - Design, Production & Repair Discovery Trail: pages 23 - 24
 - Public Services Discovery Trail: page 25
 - Pioneer Career Center Information: pages 26 - 27
- Leadership Electives: page 28
- World Languages: page 29

College Enrollment/Advanced Placement Course Information: pages 30 - 32

College Preparation Recommendations

- Kansas Scholars Curriculum: page 33
- Kansas Qualified Admissions: page 34

NCAA Athletic Eligibility Requirements

- Division I: page 35 - 36
- Division II: page 37 - 38

Academic Information & Requirements

Guidance Counselors

Students are assigned to a particular counselor based on the student's last name. The assignments are as follows:

A-E, International/Exchange	Ms. Jennifer Baptista
F-L	Ms. Triston Richardson
M-R	Mr. Michael Sullivan
S-Z	Ms. Karen Ross

Questions?

Students planning their enrollment should carefully consider the graduation requirements for Leavenworth High School. The requirements are listed within; please consult them as you prepare your enrollment. If you have any questions regarding your graduation requirements, please see your counselor. Students are welcome in the Guidance Office for any matter they wish to discuss. Some of the reasons include: Individual Plans of Study, enrollment, post-secondary plans, scholarships, and personal concerns.

Grade Point Average and Class Rank

Leavenworth High School has a weighted grading system. Weighted grades are awarded for Advanced Placement courses on the following basis: A (5.0), B (4.0), C (3.0), D (1.0), and F (0.0). All other classes are based on a 4-3-2-1 system. Cumulative GPA is computed by grades earned and credits attempted, which determines weighted class rank.

Grades	GPA	GPA (AP)
A = 90-100	4.0	5.0
B = 80-89	3.0	4.0
C = 70-79	2.0	3.0
D = 60-69	1.0	1.0
F = below 60	0.0	0.0

Honor Roll

Leavenworth High School will publish two Honor Rolls at the end of each semester during the school year. The Honor Rolls will reflect the academic achievement of the full-time student for the semester, and will be figured on the basis of grade point average. The "PIONEER HONOR ROLL" will consist of those students earning at least a 3.8 grade point average with no grade below a C. The "REGULAR HONOR ROLL" will consist of those students carrying at least a 3.2 G.P.A., but less than a 3.8, with no grade below a C.

Academic Letters

Students earn an academic letter and an invitation to a ceremony at Leavenworth High School by meeting the following requirements:

9th Grade Students: 4.0 and above cumulative GPA

10th - 12th Grade Students: 3.75 and above cumulative GPA

Once a student has earned an academic letter, they are awarded a bar for all subsequent years that they meet the requirements.

Graduation Requirements

In order to receive a Leavenworth High School diploma, a student must attend 7 semesters in grades 9-12 in an accredited junior and/or senior high, of which the final semester must be at Leavenworth High School. Summer school attendance will not be counted as a semester of attendance. Entering senior students must earn at least three credits from LHS.

All students must be enrolled as full-time students during their period of attendance at LHS. Freshman and sophomore students must be enrolled in 7 credits. Junior and senior students may be enrolled in a non-credit teacher helper per semester if their cumulative GPA is 2.8 or higher.

**Teacher Helper*

A student MUST have at least a 2.8 cumulative GPA in order to be a Teacher Helper. Those students who have volunteered to be a teacher helper must remain with the assigned teacher or the assigned office for the entire period. It is the student's responsibility to find a teacher prior to enrollment. A form may be picked up in Guidance and must be returned with the teacher's signature. Aides may not leave the room or office without an appropriate hall pass. Students may only have one teacher helper assignment per semester. Teachers may only have one teacher helper per hour. Teachers may not have a teacher helper during their plan.

Graduation Requirements

Class of 2026 & 2027

To earn a diploma from Leavenworth Senior High School students must earn a minimum of 23 credits. A half credit is defined as the successful completion of a class which meets for a full semester. Specific course requirements are listed below.

Advanced Placement courses are referred to as AP and students earn weighted grades for these classes.

English/Language Arts (4 credits)

Social Studies (3 credits)

- US History or AP US History - 1 credit
- US Government, AP Government, or US Law - .5 credit
- Psychology, AP Psychology, or Sociology - .5 credit
- World History, AP European History, or AP World History - 1 credit

Mathematics (3 credits)

- Shall include algebraic and geometric concepts
- Must include Algebra I or equivalent or prior completion of Algebra I

Science (3 credits)

- Biology or Honors Biology - 1 credit
- Physical Science - 1 credit
 - Integrated Science: Chemistry/Integrated Science: Physics
 - Chemistry
- Other - 1 credit

PE (2 credits)

- Freshman Health and PE
- PE or JROTC (Sophomore year+)

Fine Arts (1 credit)

- Art
- Drama
- Journalism
- Music

Practical Art (.5 credit)

- Computer Technology/Business
- Family and Consumer Science
- Technology Education (Drafting, Auto)
- AVID

Electives 6.5 credits

Total needed for graduation: 23 credits

Graduation Requirements

Class of 2028+

To earn a diploma from Leavenworth Senior High School students must earn a minimum of 23 credits. A half credit is defined as the successful completion of a class which meets for a full semester. Specific course requirements are listed below.

Advanced Placement courses are referred to as AP and students earn weighted grades for these classes.

English/Language Arts (4 credits)

Communications (.5 credit)

Social Studies (3 credits)

- US History or AP US History - 1 credit
- US Government, AP Government, or US Law - .5 credit
- Psychology, AP Psychology, or Sociology - .5 credit
- World History, AP European History, or AP World History - 1 credit

Mathematics (3 credits)

- Shall include algebraic and geometric concepts
- Must include Algebra I or equivalent or prior completion of Algebra I

Science (3 credits)

- Biology or Honors Biology - 1 credit
- Physical Science - 1 credit
 - Integrated Science: Chemistry/Integrated Science: Physics
 - Chemistry
- Other - 1 credit

PE (2 credits)

- Freshman Health and PE
- PE or JROTC (Sophomore year+)

Fine Arts (1 credit)

- Art
- Drama
- Journalism
- Music

Financial Literacy (.5 credit)

STEM (1 credit)

Electives (5 credits)

Total needed for graduation: 23 credits

Post Secondary Assets:

Must complete 2 or More Before Graduation:

- ACT composite (Score of 21 or higher)
- Advanced Placement Exam (3+)
- ASVAB per requirements of military branch selected
- Completing Board of Regents curriculum
- Client-centered projects
- CTE Scholar
- Eagle Scout or Gold Scout
- Industry recognized certifications
- International Baccalaureate Exam (4+)
- JROTC
- SAT score (1060 or higher)
- Seal of Biliteracy
- Senior project/senior exit interviews
- State Assessment scores of 3 or 4 in math, ELA, science
- State level Career and Technical Student Organization (CTSO) Officer
- Two or more high school athletics/activities
- WorkKeys level (Silver or higher)
- Workplace learning directly related to IPS
- Youth Apprenticeships
- 40 or more community service hours
- 9+ college hours
- 95% attendance in high school

Suggested Advanced Sequence

Suggested advanced four-year sequence of core courses:

English

Freshman Honors English (9th)
Sophomore Honors English (10th)
AP Language & Composition (11th)
AP Literature & Composition or English Composition I/II (12th)

History

AP Euro History (9th)
AP World History (10th)
AP US History (11th)
AP Gov/AP Psych (12th)

Science

Honors Biology (9th)
Chemistry (10th)
Advanced Science (Anatomy, AP Biology, AP Chemistry, Physics, or AP Physics)
Advanced Science (Anatomy, AP Biology, AP Chemistry, Physics, or AP Physics)

Math

Honors Geometry (9th)
Honors Algebra II (10th)
Pre-Calculus (11th)
AP Calculus (12th)

College-bound students and student athletes wanting to meet NCAA eligibility should consider taking four years of English, Social Studies, Science, and Math, as well as two years of a world language.

Policies and Procedures

Nondiscrimination Policy

Applicants for admission and employment, students, parents of elementary and secondary school students, employees, sources of referral of applicants for admission and employment, and all unions or professional organizations holding collective bargaining or professional agreements with USD 453 are hereby notified that this institution does not discriminate on the basis of race, color, national origin, gender, age, religion, marital status, gender orientation, veteran status, handicap, sex, or any other legally protected status in admission or access to, or treatment or employment in, its programs and activities. As required by law, the district will provide equal access to district facilities and related benefits and services and will not discriminate against any group officially affiliated with the Boy Scouts of America, the Girl Scouts of the United States of America or any other youth group designated in applicable federal law. Any person having inquiries concerning USD #453 compliance with the regulations implementing Title VI, Title IX, Section 504, Age Discrimination Act, and the Boy Scouts of America Equal Access Act is directed to contact USD #453, 200 N 4th Street, (913) 684-1400. The Superintendent of Schools, Dr. Kellen Adams, has been designated to coordinate the institution's efforts to comply with the regulations implementing Title VI, Title IX, Section 504, Age Discrimination Act, and the Boy Scouts of America Equal Access Act. Any person may also contact the Asst.

Graduation Procedure for International/ Foreign Exchange Students

- International/Foreign Exchange students can graduate from Leavenworth High School if they provide a transcript translated in English from their previous school or a government agency.
- They meet all Leavenworth High School graduation requirements.

Accredited/Non-Accredited Private School Policy *Accredited Private Schools*

- Students who have attended a private school that is accredited by the Kansas State Department of Education or another state department will receive credit and grades will be granted as listed on their transcript.

Non-Accredited Private Schools/Home Schools

- Students who have attended a Non-Accredited Private School or Home School may earn credit through the following process: Students' transcripts and documentation will be reviewed by the building principal and department representatives. Credit will be granted and grades issued based on their review and recommendation.

Make-up/Replacement Credits

- Make-up/Replacement credits may be earned through the Virtual Learning program according to the following guidelines:
 1. Students must have prior approval from their LHS counselor.
 2. Students cannot earn credit through this program for required coursework unless they have already failed the course and there is no room in their schedule to retake the course at LHS, or if the student needs more than 7 credits, which is the amount typically earned in a school year.
 3. Students cannot earn credit to replace a requirement that they are currently enrolled in and failing until the semester is completed.
 4. Exceptions to these guidelines can be made with approval of the building principal.
 5. Make-up/replacement credit work must be completed by the conclusion of each respective semester.

Dual-Enrollment via Post-Secondary Institutions

- Students may earn dual credit through post-secondary institutions if:
 1. They are sophomore, junior or senior or a freshman with a gifted IEP.
 2. They obtain approval of their counselor and the building principal (paperwork is available in the guidance office).
 3. A three-hour college class equals a half high school credit. A five-hour college class equals one high school credit.
 4. A student may elect to take one college block in their schedule per three-hour college class; two blocks per five-hour class.
 5. Students are responsible for submitting their college grade to their counselor as soon as possible (not to exceed two weeks) or an "F" will be posted on their transcript.
 6. See within the course catalog for detailed information on concurrent-enrollment courses offered at LHS.

Transcript Translation Procedures

- Leavenworth High School translates transcripts according to the following guidelines:
 1. Leavenworth High School has a weighted grading system for all Advanced Placement (AP) and International Baccalaureate (IB) coursework on the following basis:
A (5.0), B (4.0), C (3.0), D (1.0), F (0.0).
All other classes, including Pre-AP, Pre-IB, and Honors classes are based on a 4-3-2-1 system. Rank in class is figured on a cumulative GPA for all classes. GPA is computed by total number of units attempted.
 2. If a sending school posts transcripts using letter grades, those grades are honored regardless of the sending school's grading scale.
 3. If a numeric grading system is used and the grading scale is printed on the transcript of the sending school, this scale is honored and letter grades are issued according to the sending school's scale.
 4. If the grading scale is not indicated on the transcript, Leavenworth High School contacts the sending school to obtain the grading scale and issues letter grades according to the sending school's scale.

5. If a student completed courses in middle school for which high school credit has been awarded— as documented on the middle school transcript—they will be transcribed onto the student's high school transcript and applied toward graduation requirements.

Class Drop Procedure

- Students are encouraged to maintain the schedule they created with their counselor, but if a student needs a schedule change, counselors make changes before and after school only on a first come, first served basis during the first five days of each semester.
- Class sections and teachers are assigned randomly at LHS. Every attempt will be made to balance class size. Students will not be allowed to switch teachers.
- Should a student decide to request a change in the student's course selection for this year, it must meet one of the following criteria:
 1. The need for the school to balance class size.
 2. Errors made by the school in developing the schedule.
 3. Medical reason with documentation.
 4. Placement by the school for students with academic difficulties.
 5. Request to take courses in order to qualify for the Kansas Scholars/Board of Regents.
 6. Request to add a course required for post-secondary admissions (with documentation required from the college).
 7. Adding a required course in lieu of an elective class.
 8. Administrator approval of student enrollment in a higher-level course.
 9. Failure of a course required for graduation.
 10. Failure of a prerequisite, i.e., anything that would prevent a student from going on to a requisite course as published in the Course Catalog (e.g., failing Honors Algebra II prevents a student from enrolling in AP PreCalculus).
 11. Second-semester senior schedules may change as a result of qualifying for shortened day.After the first five days of the semester, if a student request meets one of these criteria, he/she may submit a Schedule Change Request form (available in the Guidance Office). All changes are subject to administrator approval.
- Class changes are not effective until all completed paperwork is returned to your counselor, an administrator has approved the change, and all books/ materials are returned to teachers.
- In special and limited circumstances where a change is approved by administration after the first two weeks of a semester, a WP (withdraw passing) or WF (withdraw failing) will be recorded on the student transcript.
- No changes may be made after the first quarter during the first semester, or after the third quarter during the second semester.

Scholastic Eligibility

To participate in a LHS activity (band, choir, debate, or forensics), team, or group, each participant must have satisfied all the scholastic eligibility requirements prior to participation. KSHSAA requires that all students have passed at least five new subjects (those not previously passed the last semester). They also must be enrolled in at least five new subjects (those not previously passed) or unit weight this coming semester. Office helpers and teacher helpers are not credit courses.

High School Graduation Cords/Stoles

For graduating seniors participating in traditional commencement ceremonies, the only cords/stoles that are allowed are those earned and received directly through participation with Leavenworth High School athletics and activities and/or academic recognition. Below is the list of approved cords/stoles that are authorized to be worn during commencement ceremonies at Leavenworth High School:

- National Honor Society - White Stole
- Thespian Cords
- AVID - White Stole
- JROTC Stole
- Student Council Cords (Members and officers)
- Top 10% Cords
- Kansas Honor Scholar Medal
- Quill and Scroll Cord
- Speech and Debate Cord
- DECA Honor Society or Cord
- Mu Alpha Theta Cord

English/Language Arts

Required Courses

•Freshman English

EN105

Grade Level: 9

Freshman English is designed in part to prepare students for mastery of state standards and admission to a university. This course includes the study of: literature, composition, the writing process, vocabulary, grammar, and other communication skills through lecture, oral and independent reading, cooperative learning, presentations and other assessments. Students will write narrative, persuasive, expository, and descriptive texts. Students will be assessed through unit tests and semester summative assessments.

•Freshman Honors English

EN155

Prerequisite: A or B student overall, instructor consent, and/or screener test

Grade Level: 9

Freshman Honors English is designed to prepare students for mastery of state standards and admission to a university. This course is distinguished from Freshman English by the instructional pacing and the delivery of advanced content. Students should carefully consider the extra time needed for this challenging course. Students will explore advanced language and composition including expository writing, literary and rhetorical analysis, and research techniques. MLA format is required for this class. Independent reading and research will be required. Oral presentations and alternate assessments will be frequent. Passing both semesters of a Freshman English course is required for graduation. (The instructional pacing and delivery of advanced content requires an additional time commitment for this challenging course.)

•Sophomore English

EN205

Grade Level: 10

Sophomore English is the second of two English requirements for graduation. Building upon the foundations established in Freshman English, students will gain a broader world view through literature. Students will explore literary themes, improve writing skills, and become more accomplished speakers and listeners. Passing both semesters of a Sophomore English course is required for graduation.

•Sophomore Honors English

EN255

Prerequisite: B or higher in previous English classes or instructor consent

Grade Level: 10

Sophomore Honors English is designed for highly-motivated students who want to develop a lifelong enjoyment of reading and learn to respond to multicultural literature. This course is distinguished from Sophomore English by the instructional pacing and the delivery of advanced content. Students should carefully consider the extra time needed for this challenging course. Students will examine literature from various countries and cultures, and develop written responses in expository and narrative essays. Students will be expected to employ good mechanics in writing and to progress in vocabulary development. The MLA style handbook is required for research papers. Students will conduct outside reading and complete quarterly novel projects. Students must pass both semesters of Sophomore English in order to graduate.

•Junior English

EN360

Grade Level: 11

In this year-long course, students will study American literature. They will become familiar with authors, themes, and specific works of American literature. Students will write essays, create research projects, and use the six trait model to evaluate and improve their writing in multiple genres. Students will conduct oral presentations, participate in group work, and use analytical thinking skills. Students must pass both semesters of Junior English in order to graduate.

•Creative Writing

EN370

Grade Level: 11

Students will read writing samples of classical and contemporary literature and poetry, and will study literary devices used by a variety of authors. Emphasis will be on the writing process, especially in the following areas of creative writing: short story, poetry, children's literature and drama. Students will research different aspects of writing, including genre, manuscript form, and publishing. Students will also research and study different authors. Students will publish the school's literary magazine, Graffiti.

•AP English Language & Composition

EN505

Prerequisite: B or higher in previous English classes or instructor consent

Grade Level: 11

This course is open to any Junior who desires a literary/linguistic challenge. The AP English Language and Composition course focuses on the development and revision of evidence-based analytic and argumentative writing, the rhetorical analysis of nonfiction texts, and the decisions writers make as they compose and revise. Students evaluate, synthesize, and cite research to support their arguments. Additionally, they read and analyze rhetorical elements and their effects in nonfiction texts—including images as forms of text—from a range of disciplines and historical periods. Students enrolling in this course are strongly encouraged to take the Advanced Placement Language and Composition exam which provides the opportunity to earn college credit. Students must pass both semesters of Junior English in order to graduate.

•Senior English

EN405

Grade Level: 12

Senior Survey is a year-long course that offers a variety of contemporary and world literature. A variety of genres studied include: non-fiction, satire, mystery, science-fiction, poetry and drama. Strategies to prepare students for successful post-secondary and lifelong reading will be implemented. (Students may take either Senior English or Sci-Fi/Fantasy Lit & Horror Fiction. They may not take a combination of both due to the state standards covered in each course.)

•AP English Literature & Composition EN515

Prerequisite: B or higher in previous English classes or instructor consent

Grade Level: 12

This senior level course is both college prep and college equivalent. Students will develop the specific knowledge and skills necessary to pass the AP Exam as well as individual college placement exams. Students enrolling in this course are strongly encouraged to take the Advanced Placement Literature and Composition exam which will provide the opportunity to earn college credit. The emphasis of this course is analysis of classical and British literature. Due to the nature of the literature, most of the course will be devoted to poetry and drama.

•English Composition I (1st semester) EN435

Prerequisite: B or higher in previous English classes or instructor consent

Grade Level: 12

This course is designed to help students achieve language proficiency and write paragraphs and essays which demonstrate unity, coherence, and levels of usage appropriate to the topic, purpose, and audience. **Students may earn college credit hours through KCKCC if they meet the admission requirements. Fees will be paid to the college for three hours of credit in Composition I.**

•English Composition II (2nd semester) EN445

Prerequisite: B or higher in previous English classes or instructor consent

Grade Level: 12

Composition II is the second of two composition courses. A continuation of English Composition I, this course emphasizes research, bibliographic, and writing skills. Students write a minimum of four (4) graded documented essays in MLA format. **Students may earn college credit hours through KCKCC if they meet the admission requirements. Fees will be paid to the college for three hours of credit in Composition II.**

•Horror Fiction (semester) EN347

Grade Level: 12

Most of us enjoy a good ghost story, but what is really at the heart of our fascination with horror? This one semester course will trace the origins of Horror fiction and explore how this genre shapes and reflects our everyday lives. Writing will be focused on literary analysis, argumentative essays, and text analysis. Students will also craft shorter timed and more expansive essays, as well as participate in class discussions and activities. (Students may take either Senior English or Sci-Fi/Fantasy Lit & Horror Fiction. They may not take a combination of both due to the state standards covered in each course.)

•Sci-Fi/Fantasy Literature (semester) EN348

Grade Level: 12

This semester-long course will help students define, analyze, and interpret varying genres within Science Fiction and Fantasy through influential works, primarily through novels and short stories. Students will be expected to write creative short works of Science Fiction and/or Fantasy as well as complete essays on topics germane to the genre. (Students may take either Senior English or Sci-Fi/Fantasy Lit & Horror Fiction. They may not take a combination of both due to the state standards covered in each course.)

Language Arts Electives

➤ Speech (semester) LA121

Grade Level: 9-12

This course is designed to offer the novice speaker a number of opportunities to organize and prepare public speaking assignments. Students will have the opportunity to speak one on one, to themselves (intrapersonal Communication), and to a live audience. Students will learn about the important role of Communication in our lives, the communication model, spatial relationships, delivery styles, interviewing styles, and the effectiveness of language, gestures, and organization techniques. (This course does NOT satisfy an English credit. Satisfies one half Language Arts credit.)

➤ Argumentation & Debate (semester) LA112

Prerequisite: ***Must be KSHSAA eligible (see above)

Grade Level: 9-12

Argumentation & Debate develops communication skills, critical thinking, and the ability to serve as an advocate in a democratic society. Students research a topic and will learn the processes of creating an effective argument for and against a resolution. Students will learn in-depth critical thinking. This class will prepare students for competitive debate. Some aspects of the class include independent research to prepare debate arguments. (This course does NOT satisfy an English credit. Satisfies one half Language Arts credit.)

➤ Competitive Debate (semester) LA212

Prerequisite: C or better in Argumentation & Debate or Formative Assessment given by teacher; ***Must be KSHSAA eligible (see above)

Grade Level: 10-12

This course offers intense study of the current season's policy debate topic, with the aim of preparation for interscholastic debate on the topic. This concentration focuses on practice debating, discussion of debate rounds, topic analysis, as well as advanced debate theory. Competitive Debate is a co-curricular class in which students research, prepare, and compete, using time and resources outside of the school day, including Saturdays. (This course does NOT satisfy an English credit. Satisfies one half Language Arts credit.)

Mathematics

Required Courses

Algebra Essentials

MA118

Grade Level: 9-10

Students will be placed in this course based on teacher recommendation. Students will deepen and extend their understanding of linear and exponential relationships. Students engage in methods for analyzing, solving, and using linear and quadratic functions. Critical areas include modeling situations using expressions, equations and inequalities; analyzing and explaining the process of solving an equation or inequality; exploring various ways of representing functions that involve exponents and roots, performing operations on and simplifying polynomials.

Algebra I

MA125

Grade Level: 9-10

Students will deepen and extend their understanding of linear and exponential relationships. Students engage in methods for analyzing, solving, and using linear and quadratic functions. Critical areas include modeling situations using expressions, equations and inequalities; analyzing and explaining the process of solving an equation or inequality; exploring various ways of representing functions that involve exponents and roots, performing operations on and simplifying polynomials.

Geometry

MA235

Prerequisite: Algebra I

Grade Level: 9-12

In this course, students develop inductive and deductive reasoning skills. The goal of this course is to extend and formalize students' geometric experiences by exploring more complex geometric situations and to improve their explanations of geometric relationships, moving toward formal mathematical arguments. Critical areas include geometric vocabulary, transformations, triangle congruence, similarity, and geometric relationships such as right triangle trigonometry; properties of special triangles and quadrilaterals; and theorems involving circles, segments, and angles.

Honors Geometry

MA240

Prerequisite: B or better in Algebra I

Grade Level: 9-12

This course covers the topics in the Geometry course in greater depth, and adds 3-D views and cross-sections of solids, geometric probability, and coordinates in 3-D. Emphasis is given to theory underlying mathematical concepts and more challenging problems are included. The course is designed for students who possess a high interest in mathematics and plan to enroll in advanced mathematics courses. We are developing the skills needed to be successful in AP or college mathematics courses, so students can expect homework assignments to require work outside of class time after every class.

Consumer Mathematics

MA303

Prerequisite: Geometry

Grade Level: 11-12

This course is designed to improve the math skills needed to be an effective and efficient consumer in today's society. Topics will include the mathematics of personal income, buying a car and related expenses, purchasing various types of insurance, housing, unit pricing, discounts and mark-ups, banking, budgeting, investments, and taxes.

Algebra II

MA345

Prerequisite: Geometry

Grade Level: 10-12

This course extends geometric and algebraic concepts, and introduces topics in probability and statistics. Topics such as polynomial, quadratic and exponential functions and their application, second-degree equations and systems, and matrices are also presented. Objectives from the Kansas Assessment Test will be targeted. Homework assignments require work outside of class time.

Honors Algebra II

MA355

Prerequisite: B or better in Hon Geometry or A in Geometry

Grade Level: 10-12

Students will cover the same topics as in the Algebra II course but in greater depth as well as explore some topics of trigonometry. Emphasis is given to theory underlying the mathematical concepts and more challenging problems are included. This course is designed for students who possess a high interest in mathematics who plan to enroll in advanced mathematics courses during subsequent high school years.

College Algebra

MA401

Prerequisite: C or better in Hon Alg II -OR- Algebra II and Teacher Recommendation

Grade Level: 11-12

College Algebra includes analysis and graphing of functions, including constant, linear, absolute value, square root, polynomial, rational, exponential and logarithmic functions and non-functions; and solving equations and inequalities, including polynomial equations, exponential equations, logarithmic equations, and systems of linear equations and inequalities. Students will be expected to use appropriate technology as one tool to achieve competency in College Algebra. **Students may earn college credit through KCKCC if they meet the admission requirements. Fees will be paid to the college for three semester hours of credit in College Algebra in the spring.**

•AP Precalculus

MA436

Prerequisite: C or better in Hon Alg II -OR- Algebra II and Teacher Recommendation

Grade Level: 11-12

MODELING REAL-WORLD DATA Students will apply the mathematical tools they acquire in real-world modeling situations. By examining scenarios, conditions, and data sets and determining and validating an appropriate function model, they gain a deeper understanding of the nature and behavior of each function type. **EXPLORING MULTIPLE REPRESENTATIONS** Students will examine functions through multiple representations. They will gain a deeper understanding of functions by examining them graphically, numerically, verbally, and analytically. **MASTERING SYMBOLIC MANIPULATION** Students will develop rigorous symbolic manipulation skills needed for future mathematics courses. They learn that a single mathematical object can have different analytical representations depending on the function type or coordinate system, and that the different analytical representations reveal different attributes of the mathematical object. **HARNESSING A DYNAMIC WORLD** Students will engage in function building that reflects not a static view of things but one that embodies how things change. Every function representation characterizes the way in which values of one variable simultaneously change as the values in another variable change. This understanding of functions and their graphs as embodying dynamic covariation of quantities prepares students to tame an ever-changing world.

•AP Calculus AB

MA505

Prerequisite: AP Precalc

Grade Level: 11-12

This course is designed to develop the student's understanding of the concepts of calculus and provides experience with its methods and applications. The courses emphasize a multi-representational approach to calculus, with concepts, results, and problems being expressed graphically, numerically, analytically, and verbally. The connections among these representations also are important. Students completing this course will study the conceptual foundation of limit, slope of a tangent line, and rate of change; derivatives of algebraic, trigonometric, exponential and logarithmic, and inverse functions; maximum and minimum values; definite and indefinite integrals; applications of integration to determine areas between curves and volumes of solids, solving separable differential equations. Students will be prepared to take the Advanced Placement Calculus AB Exam given during the spring semester.

•AP Statistics

MA515

Prerequisite: B or better in Hon Alg II or C or better in AP Precalc

Grade Level: 11-12

The AP Statistics course is a non-calculus based introduction to statistics, which exposes students to four broad conceptual themes:

1. Exploring Data: Describing patterns and departures from patterns
2. Sampling and Experimentation: Planning and conducting a study
3. Anticipating Patterns: Exploring random phenomena using probability and simulation
4. Statistical Inference: Estimating population parameters and testing hypotheses

Group projects will provide an opportunity to apply the statistical techniques studied. An interdisciplinary approach will be cultivated as students apply statistical models to other disciplines, while learning to effectively communicate with appropriate statistical language through both oral and written expression. Students will be prepared to take the Advanced Placement Statistics Exam given during the spring semester.

Science

Required Courses

•Biology

SC201

Grade Level: 9

Biology I is a course that will challenge students to explore how to solve problems using the scientific method. The state of Kansas life science content will be addressed. The student will study all biological processes and how they relate to the environment. Working with laboratory procedures, and collecting and analyzing data will be emphasized. Relationships between the sciences of chemistry, physics, and biology will be established.

•Honors Biology

SC211

Prerequisite: A or B student overall or instructor consent

Grade Level: 9

Honors Biology will cover the same subject matter as Biology as well as additional topics, and include more details. Emphasis is given to the development of scientific skills, including developing and using models, obtaining, evaluating, and communicating information, and constructing explanations and designing solutions. This course is for those students who possess either a high interest or ability in science and have taken/are taking geometry or have instructor approval.

•Integrated Science-Chemistry (semester)

SC108

Grade Level: 10

This introductory semester course is designed to allow students to explore the basic concepts of chemistry. It offers the subject matter of a traditional chemistry course with a qualitative approach to problem-solving. General areas of study will include properties of matter, the atom, the periodic table of elements, chemical reactions, and acid and bases.

•Integrated Science-Physics (semester)

SC109

Grade Level: 10

This introductory semester course is designed to allow students to explore the basic concepts of physics. It offers the subject matter of a traditional physics course with a qualitative approach to problem-solving. General areas of study will include force, motion, energy, heat, light, sound, magnetism and electricity.

•Integrated Science-Natural Disasters /Meteorology SC306

Prerequisite: Biology or Hon Biology -AND- 1 semester of Int Sci-Chem or Int Sci-Physics

Grade Level: 11-12

This course will explore the science of and relationship between Meteorology and Natural Disasters. Students will learn the scientific concepts of Meteorology, such as the physical state of the atmosphere, heat, pressure, wind, clouds and precipitation. Students will then look at how meteorology is directly tied to specific types of natural disasters, such as earthquakes, volcanoes, landslides, avalanches, floods, wildfires, blizzards, ice storms, hurricanes, tsunamis, and tornadoes. Students will assess the underlying cause and the general effects of each disaster, as well as locations in the U.S. and around the world where each type of disaster is most likely to strike.

•Chemistry

SC321

Prerequisite: Biology or Hon Biology -AND- Algebra I with a C or better; currently enrolled in Geometry, Hon Geometry or higher-level math

Grade Level: 10-12

This is a one year course in chemistry. Students who successfully complete this course will have an adequate background to enroll in a college level chemistry course. Labs are used to enhance the student's understanding of the content of the course. (Satisfies the physical science requirement.)

•Comparative Anatomy & Morphology

SC401

Prerequisite: Biology or Hon Biology and Chemistry

Grade Level: 11-12

This is a college preparatory course designed to give the student a greater understanding of anatomy, physiology, and dissection skills as they relate to the field of life science. This course consists of the study of the biological concepts of the cat, chicken, pig, and human anatomy and morphological development. The student is required to do hands-on dissections.

•Forensic Science

SC405

Prerequisite: C or better in Biology or Hon Biology and Chemistry or Int Sci-Chem & Int Sci-Physics

Grade Level: 11-12

Forensic Science focuses on the skills and concepts behind physical aspects of crime scene investigation and forensic science. Whether students desire to be a crime scene investigator, forensic pathologist, or some other medical scientist, this course will help them hone their investigative skills and review a wide range of science concepts. Students will review physics, chemistry, anatomy, biology, environmental science and computer science in the process of learning about forensic science.

•Physics

SC411

Prerequisite: Chemistry and C or better in Geometry or Hon Geometry; currently enrolled in Algebra II or Hon Alg II

Grade Level: 11-12

This is a one year course in Physics. Students who successfully complete this course will have enhanced problem-solving skills typical of those needed to begin a college freshman level Physics course. Students will also have an understanding of the application of trigonometry to physics and will increase their facility at research and reporting.

•AP Biology

SC501

Prerequisite: C or better in Biology or Hon Biology and Chemistry

Grade Level: 11-12

This course is designed as a college preparatory course. It is also designed for able and motivated students who would like to pursue college level biological studies while still at the high school level. This course will consist of study in four general areas: molecules and cells, genetics and evolution, organisms and population, anatomy and physiology. Dissections, biochemical investigations, and microscope use are a major part of instruction. The textbook used will be a college level text. The student will be required to do independent readings outside the text assignment. Use of the scientific method of problem solving will be emphasized. Students enrolling in this course are strongly encouraged to take the Advanced Placement Biology exam which provides the opportunity to earn college credit.

•AP Chemistry

SC511

Prerequisite: B or better in Chemistry

Grade Level: 11-12

This is a one year course beyond regular chemistry. Students who successfully complete the course will have covered topics typical of those covered in a college level freshman chemistry course. Considerable out of class preparation is required. Labs are used to enhance the student's understanding of the content of the course. The national AP Central website strongly suggests that to be successful, students should study a minimum of five hours outside of class per week. Students enrolling in this course are strongly encouraged to take the Advanced Placement Chemistry exam which provides the opportunity to earn college credit.

•AP Physics 2

SC522

Prerequisite: B or better in Physics and C or better in Algebra II or Hon Alg II

Grade Level: 11-12

This is a one year course beyond regular Physics. Students who successfully complete this course will have enhanced problem-solving skills typical of those used in a college freshman level Physics course. Students will also have an understanding of the application of calculus to physics and will increase their facility at research and reporting.

Principles of Biomedical Science

SC205

Prerequisite: Biology or Hon Biology

Grade Level: 10-12

Principles of Biomedical Science (PBS) is a full-year high school course in the PLTW Biomedical Science Program. This course serves to provide foundational knowledge and skills in fields such as biology, anatomy & physiology, genetics, microbiology, and epidemiology as well as engage students in how this content can be applied to real world situations, cases, and problems. Through both individual and collaborative team activities, projects, and problems, students will tackle real-world challenges faced by biomedical professionals in the field. They will work with the same tools and equipment used in hospitals and labs as they engage in relevant hands-on work. Students will develop skill in technical documentation to represent and communicate experimental findings and solutions to problems. In addition, students will explore how connections to other disciplines such as computer science and engineering shape the future of medicine and practice collaboration techniques that will help them connect with professionals across any field.

Social Studies

Required Courses

(3 credits required for graduation of which must be 1 credit of World History, AP European History, or AP World History, 1 credit of US History or AP US History, .5 credit of US Government, US Law, or AP US Government, and .5 credit of either Psychology, AP Psychology, or Sociology.)

•World History

SS205

Grade Level: 9

The World History course covers significant global developments from prehistoric cultures to the twentieth century nations. Placed within geographic context, students will analyze cultures through the study of their economic, political, social, religious, and technological achievements. Students will be expected to work independently and in small group settings; conduct research; give oral presentations; complete written assignments; and develop their critical thinking skills. With early World History as a background, emphasis will be placed on the 1400's to the present.

•AP European History

SS505

Prerequisite: A student overall or AP instructor consent

Four years of advanced social studies courses recommended if student is college-bound; recommend taking prior to AP World History

Grade Level: 9

This course studies the significant social, economic, and political movements and events in Europe during the period 1200-1990. Students will study the dynamics of continuity and change, the links between the past and the present, the importance of historical literacy, and the use of history as a form of critical thinking. Advanced Placement classes are college-level courses, which prepares students to take the AP exam in the spring. Students enrolling in this course are strongly encouraged to take the Advanced Placement European History exam which provides the opportunity to earn college credit.

•AP World History

SS515

Four years of advanced social studies courses recommended if student is college-bound

Prerequisite: B or better in AP Euro History

Grade Level: 10

This course studies the evolution of global processes and contacts in interaction with different types of human societies. The course highlights the nature of changes in international frameworks, their causes and consequences, as well as comparisons among major societies. This course focuses primarily on the past 2000 years of the global experience, the course builds on an understanding of cultural, institutional, and technological precedents that, along with geography, set the stage for continued development. Extensive reading and writing are required. Students enrolling in this course are strongly encouraged to take the Advanced Placement World History exam which provides the opportunity to earn college credit.

•United States History

SS305

Prerequisite: World History, AP Euro Hist, or AP World Hist

Grade Level: 10-11

This course engages students in the active study of political, economic, and social forces behind the development of the United States. Twentieth century American history will be a major emphasis of the course. A variety of instructional methods will be employed such as lectures, discussions, small group work, simulations and research projects.

•AP US History

SS525

Four years of advanced social studies courses recommended if student is college-bound

Prerequisite: B or better in AP Euro or AP World History

Grade Level: 10-11

The AP program in United States History is designed to provide students with the analytical skills and enduring understandings necessary to deal critically with the problems and materials in United States history. The program prepares students for intermediate and advanced college courses by making demands upon them equivalent to those made by full-year introductory college courses. Students should learn to assess historical materials—their relevance to a given interpretive problem, their reliability, and their importance—and to weigh the evidence and interpretations presented in historical scholarship. An AP United States History course should develop the skills necessary to arrive at conclusions on the basis of an informed judgment and to present reasons and evidence clearly and persuasively in an essay format. Students will be prepared to take the Advanced Placement US History exam given during the spring semester. **Students may earn college credit through KCKCC if they meet the admission requirements. Fees will be paid to the college for three semester hours of credit in United States to 1877 in the fall and three semester hours of credit in United States since 1877 in the spring.**

•United States Government (semester)

SS405

Prerequisite: US History or AP US History

Grade Level: 11-12

This course uses the study of American government to develop critical thinking and responsible citizenship. It begins with a strong focus on the U.S. Constitution and continues with an examination of the Congressional, the Executive, and the Judicial Branches of the federal government. This course includes individual and group work.

•United States Law (semester)

SS415

Prerequisite: US History or AP US History

Grade Level: 11-12

This course uses the study of law to develop critical thinking and responsible citizenship with a significant amount of independent reading and study. Additionally, the course requires individual and group work, out of class research, analysis and oral presentations. The course opens with a strong focus on the U.S. Constitution and continues with an examination of the law making process/enforcement/adjudication process through the Congressional, the

Executive, and the Judicial Branches of the federal government. The balance of the course involves a closer look at criminal law, civil law, and court procedures. Several mock trials are highlights of the course.

•AP United States Government & Politics SS534

Four years of advanced social studies courses recommended if student is college-bound

Prerequisite: B or better in US History or AP US History

Grade Level: 11-12

This course explores the political theory and everyday practice that direct the daily operation of our government and shape our public policies. The express purpose of this course is to prepare students to take the AP Exam for US Government and Politics. The course is for all intents and purposes taught on a college level and it requires a substantial amount of reading and preparation for every class. The objectives of this course go beyond a basic analysis of how our government "works." Students will develop a critical understanding of the strengths and weaknesses of the American political system, as well as their rights and responsibilities as citizens. Students will be prepared to take the Advanced Placement US Government & Politics exam given during the spring semester. Students enrolling in this course are strongly encouraged to take the Advanced Placement US Government & Politics exam which provides the opportunity to earn college credit.

•Sociology (semester) SS435

Grade Level: 11-12

Sociology is the scientific study of human interaction in groups - how people relate to one another and influence each other's behavior. The goal is to understand social situations and look for repeating patterns in society. Students will be challenged to develop a sociological perspective so that they might see the world as it really is and not like they assume it to be. Topics covered will be the major social institutions (family, education, economy, government, religion) as well as important concepts including socialization, culture, adolescence, deviance, and social change. Important social problems such as discrimination, poverty, and crime will be studied.

•Psychology (semester) SS445

Grade Level: 11-12

This course is designed to introduce students to the scientific study of behavior and thinking. Emphasis will be placed on those areas of daily living where we knowingly, and unknowingly, use and are affected by the principles of psychology. The course will cover basic learning theories and methods of behavior modification; how we are physically equipped to perceive our environment; the ways people adjust to their society; and study of the definitions, identification, and treatment of various types of mental illness. Students will be given opportunities to research topics from various areas of psychology.

•AP Psychology SS533

Grade Level: 11-12

Following the College Board's suggested curriculum designed to parallel a college-level psychology course, AP Psychology courses introduce students to the systematic and scientific study of the behavior and mental processes of human beings and other animals, expose students to each major subfield within psychology, and enable students to examine the methods that psychologists use in their science and practice. No summer reading is required. Students enrolling in this course are strongly encouraged to take the Advanced Placement Psychology exam which provides the opportunity to earn college credit.

Physical Education

Health (Boys) (semester)

PE116

Health (Girls) (semester)

PE117

(All freshmen must take one semester of PE and one semester of Health.)

Grade Level: 9

One semester is devoted to Healthy Living concepts as they pertain to the student's daily lives. Subjects include: Human Sexuality/AIDS Education (as per State Mandate); Nutrition; Substance Abuse; Mental Health; and Stress Management. Successful completion of this course is required for graduation.

➤ **Lifetime Fitness & Wellness (semester)** **PE201**

Grade Level: 9-12

This course is designed for students who would like to learn how to stay fit after high school. Students will learn the importance of staying active and how to avoid a sedentary lifestyle because obesity is an American epidemic. Activities will include: aerobics, weight lifting, short and long-distance running, cardiovascular equipment, strength bands, exercise balls, core strength, upper and lower body strength, circuit training, etc.

➤ **Walking for Fitness (semester)** **PE203**

Grade Level: 9-12

Walking for Fitness is designed to stress the importance of cardiovascular, muscular, and mental fitness development for maintaining a healthy lifestyle which will include the State and National components of fitness. The course is appropriate for students of varying fitness abilities and to acquire the knowledge, skills, and attitudes necessary for physical fitness through participation in a carefully monitored walking program. A variety of instructional information and teaching strategies adaptable for classroom use is also provided. Course assignments encourage participants to integrate specific national standards and state standards for physical education. Objectives for each lesson are modeled around standards-based learning as identified by the Kansas State Department of Education. Personal fitness and nutrition assessments will guide students to design programs to meet their individual fitness goals.

➤ **Racket & Individual Sports (semester)** **PE211**

Grade Level: 9-12

Racquet and Individual Sports will target students who prefer individual sports to team sports. Activities may include lifelong sports, such as badminton, tennis, golf/ Frisbee Golf, archery, pickleball, horseshoes, orienteering, bowling, and ping pong.

➤ **Team Sports (semester)** **PE221**

Grade Level: 9-12

Team Sports is offered for those students who enjoy participating on a team. This class focuses on teamwork, strategy, problem solving, rules of the game, and etiquette. Activities may include volleyball, basketball, softball, flag football, soccer, team handball, speedball, Ultimate Frisbee, and hockey.

➤ **Sports Conditioning (semester)** **PE241**

Prerequisite: Life Fit & Well -OR- participation in a sport, cheerleading, JROTC Raiders, or powerlifting team

Grade Level: 9-12

This course emphasizes aspects of fitness that relate to improving athletic performance for highly motivated students. Improvement in speed, power, and strength will be a priority. Use of free weights and explosive Olympic-style lifting will be employed. Reducing the risk of athletic injury will also be emphasized. Participation in after-school workouts (for out-of-season students) will be expected.

➤ **Advanced Sports Conditioning (semester)** **PE245**

Prerequisite: Sports Conditioning

Grade Level: 10-12

Advanced Sports Conditioning is designed to continue the strength and athletic development of our junior and senior varsity athletes. This course emphasizes aspects of fitness that relate to improving athletic performance for highly motivated students. Improvement in speed, power, and strength will be a priority. Use of free weights and explosive Olympic style lifting will be employed. Reducing the risk of athletic injury will also be emphasized. Participation in after school workouts (for out of season students) will be expected.

Arts (Visual)

Electives

➤ **Intro to Two Dimensional Art (semester) FA102**

Grade Level: 9-12

This course introduces students to two dimensional media and methods used to produce art, i.e. drawing, painting, and printmaking. Emphasis will be given to the elements and principles of design as they apply to the two dimensional format. Students will create a foundation of artistic thinking and problem-solving.

➤ **Intro to Three Dimensional Art (semester) FA103**

Grade Level: 9-12

This course introduces students to three dimensional media and methods used to produce art, i.e. sculpture, ceramics, and installation work. Emphasis will be given to the elements and principles of design as they apply to the three dimensional format. Students will create a foundation of artistic thinking and problem-solving.

➤ **Advanced Two Dimensional Art FA201**

Prerequisite: B or better in Intro to 2D Art -OR- Portfolio of 10 images with artist statement and instructor consent

Grade Level: 10-12

This class will build upon the skills obtained in Intro to 2D Art. Students will strive to create gallery worthy work in a more independent direction. Coursework will emphasize participation/effort/time management, craftsmanship/use of materials, creative expression, planning/reflecting, project visual outcome and portfolio development.

➤ **Advanced Three Dimensional Art FA301**

Prerequisite: B or better in Intro to 3D Art -OR- Portfolio of 10 images with artist statement and instructor consent

Grade Level: 10-12

This course introduces students to three dimensional media and methods used to produce art, i.e. sculpture, ceramics, and installation work. Students will be assessed on participation, effort/time management, craftsmanship/use of materials, creative expression, planning/reflecting, project visual outcome and portfolio development.

➤ **AP Art History FA501**

Grade Level: 11-12

This course is designed for the student who has a particular interest in art and the historical evolution of art. This course will cover the historical development of art from prehistory to contemporary time. Topics such as cultural influences, iconography, and style as well as material and methods will be discussed. Students enrolling in this course are strongly encouraged to take the Advanced Placement Art History exam which provides the opportunity to earn college credit.

➤ **AP Art & Design FA502**

Prerequisite: B or higher in Intro to 2D, Intro to 3D, Adv 2D & Adv 3D -OR- Portfolio of 15 images with artist statement and instructor consent

Grade Level: 11-12

This year-long course is designed for the student who has an exemplary interest in art. Emphasis will be on the personal growth as an artist through research, experimentation, discovery, inventive thinking and art-making, and problem solving in their work. Students will build their portfolio for review of college-level art programs. Students enrolling in this course are strongly encouraged to take the Advanced Placement Art & Design exam which provides the opportunity to earn college credit.

Arts (Music)

Electives

*****Scholastic Eligibility:** To participate in a LHS activity (band, choir, debate, or forensics), team or group, each participant must have satisfied all the scholastic eligibility requirements prior to participation. KSHSAA requires that all students have passed at least five new subjects (those not previously passed the last semester.) They also must be enrolled in at least five new subjects (those not previously passed) or unit weight this coming semester. Office helpers and teacher helpers are not credit courses.

➤ **Mixed Choir (semester)**

FA131

Prerequisite: B or better in previous semester AND instructor consent if enrolling in additional semesters

Grade Level: 9-12

The aim of this course is to stress proper techniques, vocal score interpretation, and performance disciplines. The course is designed to familiarize the student with performance in a choral setting. Emphasis is placed on choral reading skills, part-singing, and musical interpretation.

➤ **Mixed Choir (year)**

FA231

Prerequisite: Audition only; ***Must be KSHSAA eligible (see above)

Grade Level: 9-12

The aim of this course is to stress proper techniques, vocal score interpretation, and performance disciplines. The course is designed to familiarize the student with performance in a choral setting. Emphasis is placed on choral reading skills, part-singing, and musical interpretation. The Mixed Choir performs in a minimum of two concerts each year. Attendance is required at performances.

➤ **A Cappella Choir**

FA331

Prerequisite: Audition only; ***Must be KSHSAA eligible (see above)

Grade Level: 11-12

This class performs traditional choral literature. Studies in musical styles of the Renaissance, Baroque, Classical, Romantic, and Contemporary Periods are included. Some foreign language diction is studied including Latin, Italian, French, and German. There will be at least one major public performance each semester. Attendance is required at performances. A significant amount of literature studied will be unaccompanied. This course seeks to develop the most refined possible musical skills in the individual.

➤ **Show Choir**

FA431

Prerequisite: Audition only; ***Must be KSHSAA eligible (see above)

Grade Level: 10-12

Show Choir, also known as the Leavenworth High School Power and Life Company, emphasizes public performance. Students are expected to be highly motivated in singing and dancing and personality projection. Modern music in popular styles is studied and performed, with special emphasis given to Broadway and show music. The Power and Life Company is highly visible in the community through its numerous performances. Attendance at performances is required.

➤ **Senior High Band**

FA141

Prerequisite: ***Must be KSHSAA eligible (see above)

Grade Level: 9-12

First semester is Marching Band, which is a performance-oriented course that allows students to study music and movement. The band supports the football team through performances at home football games and the community in local parades. Students also have the opportunity to perform at several marching competitions. After marching season is complete, marching band students will give one concert as a Concert Band and students will perform at first semester basketball games. Attendance at all performances is mandatory and is an important factor in grading. Second semester Concert Band is a performance-oriented course that allows students to study music in several capacities. Included are pep band, solos, and large and small ensembles. Students will be asked to perform at basketball games during the second semester, and band concerts and festivals. Attendance at all performances is mandatory and is an important factor in grading.

➤ **Jazz Band**

FA241

Prerequisite: Audition only/dual enrollment in Sr. High Band

Grade Level: 10-12

Jazz Band is a performance oriented course. Students will study various styles of jazz literature and perform at several events throughout the year. Attendance at all performances is mandatory and is an important factor in grading.

➤ **Music Appreciation (semester)**

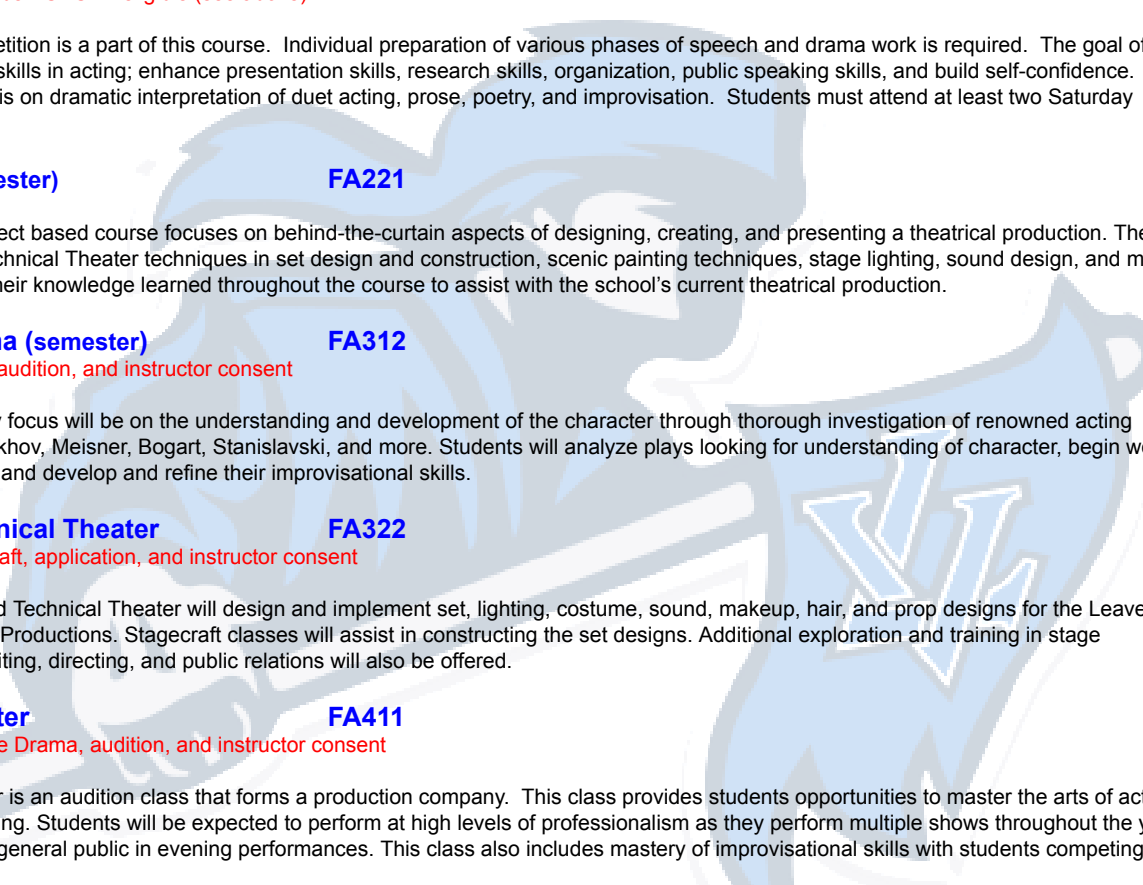
FA251

Grade Level: 9-12

Music Appreciation is the study of the history and literature of music. Great composers and their music are studied; musical styles of the past and present are examined. This course is highly recommended for students planning to pursue a career in music.

Arts (Theater)

Electives

- 
- **Acting I (semester)** **FA111**
Grade Level: 9-12
This active course is an introduction to the art of acting. Students will be exposed to a variety of Theater based activities that will promote both confidence, self-awareness, and collaboration with peers. Units will be taught on: creative drama, monologue, duet scene, history of drama, stage terminology, and more!
- **Forensics (semester)** **FA121**
Prerequisite: *Must be KSHSAA eligible (see above)**
Grade Level: 9-12
Interscholastic competition is a part of this course. Individual preparation of various phases of speech and drama work is required. The goal of the course is to develop skills in acting; enhance presentation skills, research skills, organization, public speaking skills, and build self-confidence. There will be some emphasis on dramatic interpretation of duet acting, prose, poetry, and improvisation. Students must attend at least two Saturday tournaments.
- **Stagecraft (semester)** **FA221**
Grade Level: 10-12
This hands-on & project based course focuses on behind-the-curtain aspects of designing, creating, and presenting a theatrical production. The students will learn technical Theater techniques in set design and construction, scenic painting techniques, stage lighting, sound design, and more! Students will utilize their knowledge learned throughout the course to assist with the school's current theatrical production.
- **Advanced Drama (semester)** **FA312**
Prerequisite: Acting, audition, and instructor consent
Grade Level: 10-12
This course's primary focus will be on the understanding and development of the character through thorough investigation of renowned acting techniques from Chekhov, Meisner, Bogart, Stanislavski, and more. Students will analyze plays looking for understanding of character, begin working on directing techniques, and develop and refine their improvisational skills.
- **Advanced Technical Theater** **FA322**
Prerequisite: Stagecraft, application, and instructor consent
Grade Level: 10-12
Students in Advanced Technical Theater will design and implement set, lighting, costume, sound, makeup, hair, and prop designs for the Leavenworth High School Theater Productions. Stagecraft classes will assist in constructing the set designs. Additional exploration and training in stage management, playwriting, directing, and public relations will also be offered.
- **Repertory Theater** **FA411**
Prerequisite: Advance Drama, audition, and instructor consent
Grade Level: 11-12
LV Repertory Theater is an audition class that forms a production company. This class provides students opportunities to master the arts of acting, directing, and designing. Students will be expected to perform at high levels of professionalism as they perform multiple shows throughout the year that are presented to the general public in evening performances. This class also includes mastery of improvisational skills with students competing with our Improv Team.

Practical Arts/CTE

Electives - Discovery Trail: Business

➤ **Business Essentials (semester)**

BU103

Grade Level: 9-12

This introductory semester-long course introduces students to the world of business and helps set a foundation for high school, college, and career. The study skills aspect of the course covers organization, time management, improving reading for comprehension, note-taking skills, and more. The business units help students acquire sound values and acceptable attitudes regarding their personal lives and on-the-job success. Students will be engaged in teamwork, presentations, computer-related activities, and current events while learning the following topics: today's economy, business ownership, career exploration, getting and keeping a job, how to be a wise consumer, managing money, understanding banking and credit, and types of insurance. The knowledge obtained in this class is practiced and reinforced throughout the course and is transferable to other courses as well as everyday life. (This course is primarily designed for freshman and sophomore students interested in future business pathway courses).

➤ **Accounting I**

BU201

Prerequisite: C or better in Algebra I

Grade Level: 10-12

This course provides students with an understanding of the financial transactions of a business and enables them to record, present, and interpret these transactions necessary as a consumer of goods and services. Occupations available to the high school graduate that require a knowledge of accounting include accounting clerks/bookkeepers, payroll clerks, and various banking trainee positions. This course is also recommended for those planning to major in any area of business in college.

➤ **Advanced Accounting**

BU301

Prerequisite: C or better in Accounting I

Grade Level: 11-12

Advanced Accounting courses expand upon the foundational accounting principles and procedures used in business. Course content typically includes the full accounting cycle, payroll, taxes, debts, depreciation, ledger and journal techniques, and periodic adjustments. Students learn how to apply standard auditing principles and to prepare budgets and final reports. Calculators, electronic spreadsheets, and other automated tools are usually used. Topics may include elementary principles of partnership and corporate accounting and the managerial uses of control systems and the accounting process and further enhancement of accounting skills.

➤ **Entrepreneurship (semester)**

BU311

Prerequisite: Business Essentials recommended

Grade Level: 10-12

This technical-level semester-long course is designed to introduce students to the world of small business ownership and management. Students will be given the opportunity to develop a business plan, as well as work in one or more of the student managed school-based enterprises (Pete's Place, Pioneer Perk, and Pete's Print and Stitch), performing duties under the direction of student owners and operators while developing business start-up skills in planning, financing, human resources, marketing/advertising, selling, and management of products. This hands-on course involves students in a variety of activities that will provide them with the skills necessary to be successful in a constantly changing workplace. Students should be prepared to work independently at times while continuing to meet course expectations. Students will also be exposed to several competitive opportunities involving scholarship. (This course is designed for mature sophomores and above, interested in becoming an entrepreneur or for students wanting a hands-on learning experience in preparing for employment).

➤ **Business Management (semester)**

BU315

Prerequisite: Business Essentials or Marketing I recommended

Grade Level: 10-12

This technical-level semester-long course covers the key characteristics of business organization and environment and the business functions of human resource management, finance and accounts, marketing and operations management. Students will be working in one or more of the student managed school-based enterprises (Pete's Place, Pioneer Perk, and Pete's Print and Stitch), performing duties of a small business owner/operator in the areas of planning, financing, human resources, marketing/advertising, selling, and management of products. This course is essentially a continuation of the Entrepreneurship Course, however more emphasis will be placed on ownership, human resources, and financial management. (This course is designed for mature sophomores and above interested in becoming an entrepreneur or for students wanting a hands-on learning experience in preparing students for management positions in the workforce).

➤ **Marketing I**

BU333

Prerequisite: Business Essentials

Grade Level: 10-12

This technical-level year-long course is designed to develop students' understanding of marketing principles. Students will explore entry-level career areas such as business economics, human relations, business communications, marketing concepts, marketing research, advertising, professional selling, and sales promotion. Students will be exposed to independent and group classroom activities, giving them hands-on experiences in exploring career opportunities in the marketing industry. Participation in a co-curricular career and technical education student-led organization is highly encouraged, however not mandatory. (This course is designed for mature sophomores and above interested in learning about careers in business).

➤ **Marketing II**

BU432

Prerequisite: B or better in Marketing I, instructor consent

Grade Level: 11-12

This application-level course is designed for students who will be actively engaged in utilizing technology and technology applications in the design, production and implementation of marketing strategies within the three school-based enterprises (Pete's Place, Pioneer Perk, and Pete's Print and Stitch). Students will create and print a variety of multi-media and electronic materials used in the marketing process. Application-level activities will be centered around: advertising, branding, product design, graphic design, packaging, promotion, publicity, sponsorship, public relation, sales promotion

and professional selling. This is a co-curricular class, and students are required periodically to spend time in a working lab environment, outside of the school day. Participation in a co-curricular career and technical education student-led organization is highly encouraged, and student management positions will be offered accordingly.

➤ **Advanced Marketing**

BU433

Prerequisite: B or better in Marketing II and instructor consent or concurrently enrolled in Marketing II with instructor consent

Grade Level: 11-12

This course provides workplace experience(s) including internship, externship and capstone project opportunities in fields related to marketing. Advanced Marketing is designed to strengthen a student's learning experience by integrating on-campus studies with closely related work experience(s). Goals are typically set cooperatively by the student, teacher, and possible employer (although students are not necessarily paid). This course may include classroom activities involving further study of the field or discussion regarding workplace experience(s). Experiences and opportunities will look differently for different students based on individual student needs and desires.

Practical Arts/CTE

Electives - Discovery Trail: Media & Technology

➤ **Introduction to Web & Digital Media (semester)**

CT105

Grade Level: 9-12

This introductory level class covers essential skills in digital communication, content creation, web development, and design. Key competencies include composing professional emails, analyzing social media trends, creating digital content, evaluating content quality, and citing sources. Students also learn HTML, CSS, and JavaScript for web development, applying UX design principles to create responsive websites. Additionally, graphic design fundamentals are covered, focusing on visual identity and optimizing web graphics.

➤ **Graphic Design**

CT222

Prerequisite: C or better in Intro to Web & Digital Media or teacher recommendation from 8th grade technology teacher

Grade Level: 9-12

Graphic Design courses emphasize design elements and principles in the purposeful arrangement of images and text to communicate a message. They focus on creating art products such as advertisements, product designs, and identity symbols. Graphic Design courses may investigate the computer's influence on and role in creating contemporary designs and provide a cultural and historical study of master design works of different periods and styles. (Course may count as Fine Arts or Practical Arts credits.)

➤ **Applied Graphic Design**

CT440

Prerequisite: B in Graphic Design, submit portfolio, interview, instructor consent

Grade Level: 10-12

Application Level: The goal of this course is to provide the student with work-based learning opportunities in graphic design. It will be focused on applying technical skills to solve real-world graphic design problems. This course will also provide graphic design instruction in the organization and presentation of his or her work in a portfolio format of professional quality. A portfolio, digital portfolio archive, self-promo, resume and business ensemble will be produced. Instruction in interviewing techniques and employment searches will also be provided.

➤ **Web Design**

CT231

Prerequisite: C or better in Intro to Web & Digital Media

Grade Level: 10-12

Through this class, students will learn how to design user-friendly web pages that are both functional and interactive. Students will begin by learning HTML coding and then use web authoring software to develop projects.

➤ **Applied Game Design**

CT331

Prerequisite: C or better in Graphic Design or Web Design

Grade Level: 11-12

Students will learn the basic principles of game design and build simple games using game design software. They will also learn how to incorporate the games into a website.

➤ **Journalism & Media Communications (semester)**

FA261

Grade Level: 9-12

Journalism & Media Communications is a technical level course in journalism. Topics include the study of communications and media, interviewing, writing, and storytelling using the Associated Press style. Students also study ethical and legal issues related to mass media. Students will research topics, interview peers and staff, and write news and feature stories. (This class is a prerequisite for Media Design & Production (Yearbook).)

➤ **Digital Media Technology (semester)**

FA272

Grade Level: 9-12

Digital Media Technology teaches the technical skills needed to work with electronic media. Topics include the study of typography, photography, color theory, podcasting and design principles. Students will create multimedia projects while learning workflow, time management and essential communication skills. (This class is a prerequisite for Media Design & Production (Yearbook).)

➤ **Audio/Video Production I (semester) FA281**

Grade Level: 9-12

Audio/Video Production I is a technical level course in journalism. It introduces students to the basics of producing broadcast style news and feature stories using audio and video. Topics include a study of pre-production, production and post-production processes. Students will learn to use Adobe Premiere to edit video productions. This course is a prerequisite for Audio/Video Production II.

➤ **Audio/Video Production II FA382**

Prerequisite: B or better in Audio/Video Production I and instructor consent

Grade Level: 10-12

Audio/Video Production II is an advanced level course in journalism and requires approval from the instructor for enrollment. Students will use what they learned in Video Broadcasting I to create the school video broadcast program, Pioneer TV. Students will be held accountable for meeting deadlines and working as part of a production team. Students will take part in interviewing, capturing audio and video, editing, and producing. This class requires a significant contribution outside of the scheduled class time to attend school events for assignments.

➤ **Media Design & Production (Yearbook) LA316**

Prerequisite: B or better in Journalism & Media Comm or Dig Media Technology and instructor consent

Grade Level: 10-12

Media Design & Production (Yearbook) is an advanced level course in journalism and requires pre-approval from the instructor for enrollment. Students will use what they learned in Journalism & Media Communications to create the school yearbook. Students will be held accountable for meeting deadlines and working as part of a production team and take part in interviewing, researching, photography, page design activities, and writing using the Associated Press style. This class requires a significant contribution outside of the scheduled class time to attend school events for assignments.

➤ **Advanced Media Design & Production LA317**

Prerequisite: A in Journalism & Media Comm or Dig Media Technology or Audio/Video Production and instructor consent

Grade Level: 10-12

Advanced Media Design & Production is an advanced level course in journalism and requires pre-approval from the instructor for enrollment. This course will provide students the opportunity to research topics in journalism and create a digital, semester-long project which culminates with a digital portfolio of skills and experiences. Students will present their portfolio to a committee for review at the end of each semester they are enrolled in the course. Students will work independently to develop plans, identify resources and schedules, develop quality control and progress monitor.

Practical Arts/CTE

Electives - Discovery Trail: Family & Consumer Science

➤ **Introduction to Family & Consumer Sciences FC101**

Grade Level: 9-12

This course is an orientation to the Family and Consumer Sciences pathways. Its purpose is to introduce students to the many current subject areas, issues, trends, and careers in food preparation, sanitation and nutrition, interpersonal relationships, child care and development, managing money and personal resources, housing and furnishings, and hand/machine sewing and clothing choices. Students will also take part in many activities that will involve cooperative learning, hands-on projects, and lab experiences.

➤ **Culinary Essentials (semester) FC223**

Prerequisite: Intro to FACS

Grade Level: 10-12

Culinary Essentials introduces students to basic culinary skills, food safety and sanitation, nutrition concepts, food preparation, presentation, meal planning and career opportunities. Students will learn through lab activities and classroom instruction. This class is a prerequisite for Culinary Arts I.

➤ **Culinary Arts I (must apply) FC325**

Prerequisite: Culinary Essentials, apply and instructor consent

Grade Level: 11-12

Culinary Arts I integrates the knowledge, skills, and practices required for careers in the restaurant industry. It provides students with a firm foundation in food preparation of all menu categories, food presentation, culinary math, menus, safety and sanitation, and business industry standards. Students will learn through lab activities and classroom instruction.

➤ **Culinary Arts II (must apply) (first semester) FC425**

Prerequisite: Culinary Arts I, apply, and instructor consent

Grade Level: 12

Technical Level: Culinary Arts II builds upon 16053 Culinary Arts I course by expanding student knowledge, skills, and practices. Whereas Culinary Arts I focused on beginning culinary skill development, Culinary Arts II expands those skills and adds topics such as nutrition and food service management.

- **Family Studies (semester)** **FC233**
Prerequisite: Intro to FACS
Grade Level: 10-12
The Family Studies course explores the roles and responsibilities of parents such as how society, media, technology and diversity impact their ability to balance work and family. It also includes the development of children and parents as their earliest teacher. Parenting styles and family stages are explored as is the changing demographics which will change the face of the US family. Parenting and behavior guidance skills are strengthened through a study of positive family relationships, child abuse and neglect, safety, and health practices. Occupations related to meeting the needs of families will be analyzed. This course will promote the creation of healthy and sustainable families be they their own or those they work with.
- **Human Growth & Development - The Early Years (semester)** **FC243**
Prerequisite: Intro to FACS
Grade Level: 10-12
This course provides students with knowledge about the physical, mental, emotional, and social growth and development of humans from conception to old age, with a special emphasis on birth through school age. Course content will provide an overview of life stages, with a strong tie to prenatal and birth processes; fundamentals of children's emotional and physical development; and the appropriate care of children.
- **Teaching as a Career** **FC224**
Prerequisite: Intro to FACS
Grade Level: 10-12
Teaching Profession courses introduce students to the principles underlying teaching and learning, the responsibilities and duties of teachers, and the techniques of imparting knowledge and information. These courses typically expose students to and train them in classroom management, student behavior, leadership and human relations skills, assessment of student progress, teaching strategies, and various career opportunities in the field of education.
- **Teaching Internship (semester, 2 periods)** **FC300**
Prerequisite: Teaching as a Career; apply/interview, instructor consent
Grade Level: 11-12
Educational Methodology courses prepare students to teach and guide others. This course provides opportunities for students to develop their own teaching objectives, to design lesson plans, and to experience teaching in a controlled environment. Students examine and practice teaching strategies, learning styles, time management and planning strategies, presentation and questioning skills, classroom management, and evaluation techniques.
Personal transportation to the internship site is required.
- **Lifespan Development (semester)** **FC348**
Prerequisite: Intro to FACS
Grade Level: 10-12
Lifespan Development prepares students for occupations associated with meeting the needs of people by learning about physical, intellectual, emotional and social development from childhood to death. In addition, this course helps students discover how individuals respond to the various stages of the lifespan with a strong tie to teen years, adulthood and later years.
- **Career Internship (semester, 2 periods)** **FC301 & 302**
Prerequisite: Intro to FACS, apply/interview, instructor consent
Grade Level: 11-12
This course is an opportunity to put soft skills and career knowledge to work by participating in an internship in the Leavenworth community. This is a capstone course for our Family and Consumer Service and Human Service related pathways. Class is scheduled during 7th and 8th hours first semester to allow time for the internship. **Personal transportation to the internship site is required.**

Practical Arts/CTE

Electives - Discovery Trail: Design, Production, & Repair

- **Introduction to Engineering** **TE106**
Grade Level: 9-12
An Introductory level course designed to introduce students to concepts in Engineering with a focus on Science, Technology, Engineering, & Math; including units on safety and tools, computer use, design, automation, robotics, space, flight, and electricity.
- **Drafting/CAD** **TE202**
Prerequisite: Algebra I
Grade Level: 9-12
This course is highly recommended for any student interested in the fields of mechanical and architectural drafting or engineering. Drafting/CAD is designed to introduce the student to basic drafting skills and knowledge needed to function in a technical field. The course includes: sketching, multiview, isometric, oblique, dimensioning, and geometric construction. In keeping pace with new technology, each student will spend a large percentage of time using CAD (Computer-Aided Design) programs such as AutoCAD, Inventor, SolidWorks and more.

- **Principles of Applied Engineering** **TE206**
Prerequisite: Introduction to Engineering
Grade Level: 10-12
A technical level course designed to expand student knowledge in the area of applied engineering and allow students to apply learning related to multiple topics in the field of engineering.
- **Civil Engineering & Architecture** **TE307**
Prerequisite: Principles of Applied Engineering
Grade Level: 11-12
An application level course providing students with an overview of the fields of Civil Engineering and Architecture while emphasizing the interrelationship of both fields. Students typically use software to address real world problems and to communicate the solutions that they develop. Course topics typically include the roles of civil engineers and architects, project-planning, site-planning, building design, project documentation, and presentation.
- **Robotics I** **TE308**
Prerequisite: Introduction to Engineering
Grade Level: 10-12
A technical level course to develop and expand students' skills and knowledge so that they can design and develop robotic devices. Topics covered in the course may include mechanics, electrical and motor controls, pneumatics, computer basics, and programmable logic controllers.
- **Computer Integrated Manufacturing** **TE405**
Prerequisite: Robotics I
Grade Level: 11-12
An application level course involving the study of robotics and automation. Building on computer solid modeling skills, students may use computer numerical control (CNC) equipment to produce actual models of their three-dimensional designs. Course topics may also include fundamental concepts of robotics, automated manufacturing, and design analysis.

Practical Arts/CTE

Electives - Discovery Trail: Design, Production, & Repair (Auto)

- **Introduction to Automotive Technology (semester)** **TE131**
Grade Level: 10-12
This course is for students interested in the automobile from a business, technical, and/or consumer perspective. A broad range of subjects will be covered in this class to include automotive career exploration, consumer information, minor maintenance and safety inspection, and an introduction to technical systems.
- **Automotive Technology I (3 periods)** **TE232**
Prerequisite: Intro Auto Tech preferred; apply/interview; instructor consent
Grade Level: 11-12
This course is for students interested in the automobile from a business, technical, and/or consumer perspective. A broad range of subjects will be covered in this class to include automotive career exploration, consumer information, minor maintenance and safety inspection, and an introduction to technical systems.
- **Automotive Technology II (4 periods)** **TE332**
Prerequisite: Auto Tech I preferred; apply/interview; instructor consent
Grade Level: 12
This course is a continuation for students interested in the automobile from a business, technical, and/or consumer perspective. A broad range of subjects will be covered in this class to include automotive career exploration, consumer information, minor maintenance and safety inspection, and an introduction to technical systems.



Practical Arts/CTE

Electives - Discovery Trail: Public Services

➤ Introduction to Family & Consumer Sciences

FC101

Grade Level: 9-12

This course is an orientation to the Family and Consumer Sciences pathways. Its purpose is to introduce students to the many current subject areas, issues, trends, and careers in food preparation, sanitation and nutrition, interpersonal relationships, child care and development, managing money and personal resources, housing and furnishings, and hand/machine sewing and clothing choices. Students will also take part in many activities that will involve cooperative learning, hands-on projects, and lab experiences.

➤ Teaching as a Career

FC224

Prerequisite: Intro to FACS

Grade Level: 10-12

Teaching Profession courses introduce students to the principles underlying teaching and learning, the responsibilities and duties of teachers, and the techniques of imparting knowledge and information. These courses typically expose students to and train them in classroom management, student behavior, leadership and human relations skills, assessment of student progress, teaching strategies, and various career opportunities in the field of education.

➤ Family Studies (semester)

FC233

Prerequisite: Intro to FACS

Grade Level: 10-12

The Family Studies course explores the roles and responsibilities of parents such as how society, media, technology and diversity impact their ability to balance work and family. It also includes the development of children and parents as their earliest teacher. Parenting styles and family stages are explored as is the changing demographics which will change the face of the US family. Parenting and behavior guidance skills are strengthened through a study of positive family relationships, child abuse and neglect, safety, and health practices. Occupations related to meeting the needs of families will be analyzed. This course will promote the creation of healthy and sustainable families be they their own or those they work with.

➤ Teaching Internship (semester, 2 periods)

FC300

Prerequisite: Teaching as a Career; apply/interview, instructor consent

Grade Level: 11-12

Educational Methodology courses prepare students to teach and guide others. This course provides opportunities for students to develop their own teaching objectives, to design lesson plans, and to experience teaching in a controlled environment. Students examine and practice teaching strategies, learning styles, time management and planning strategies, presentation and questioning skills, classroom management, and evaluation techniques.

Personal transportation to the internship site is required.

➤ Lifespan Development (semester)

FC348

Prerequisite: Intro to FACS

Grade Level: 10-12

Lifespan Development prepares students for occupations associated with meeting the needs of people by learning about physical, intellectual, emotional and social development from childhood to death. In addition, this course helps students discover how individuals respond to the various stages of the lifespan with a strong tie to teen years, adulthood and later years.

Vocational/Technical Colleges

Leavenworth USD #453 has a partnership with Kansas City Kansas Community College at the Pioneer Career Center in Leavenworth and at the Technical Education Center (TEC) in Kansas City, as well as with Highland Community College Technical Center in Atchison. Both technical colleges offer a variety of programs available to students who have successfully completed their coursework at LHS and are in good standing for graduation. Enrollment for either school generally takes place in March with limited spaces. Students interested in attending must be of junior or senior standing and must complete an entrance exam and achieve a specific score in order to enroll in its programs. See your guidance counselor for more information on the programs available at each institution.



Pioneer Career Center



Leavenworth - KCKCC
1901 Spruce ~ Leavenworth, KS 66048

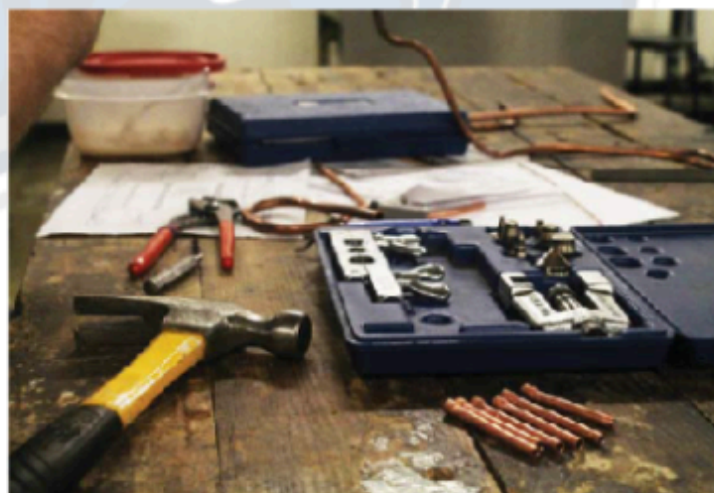


Enhanced Curricular Opportunity

Leavenworth High School is partnering with Kansas City Kansas Community College to create the Pioneer Career Center, or PCC. PCC is housed in what was formerly West Intermediate School, and is opened to interested Juniors and Seniors beginning in August of 2015. PCC gives LHS students the opportunity to explore career paths in a hands-on environment while earning career paths in a hands-on environment while earning college credit. Credits earned at PCC may be used toward an Associate's Degree at KCKCC or other accepting institutions.

Benefits

- LHS students will receive free tuition (although some program may have additional costs for materials or uniforms)
- Each College Credit that may be used towards an Associate's Degree at KCKCC or other accepting institutions
- Explore different career paths and interests not normally available to high school students.
- Learn technical skills in a hands-on environment
- Earn necessary certifications for various career paths.
- Secure opportunities for employment and apprenticeships
- Gain practical experience while still in high school.



Eligibility

This program is open to LHS Juniors and Seniors, as well as other high school students in the surrounding community, who are on track for graduation. Enrollment requires approval by both the home school and the Pioneer Career Center.

Enrollment

LHS Students: Guidance Counselors will be available to assist with the enrollment process.
Contact LHS Guidance Office at (913)-684-1550



Pioneer Career Center



Leavenworth - KCKCC
1901 Spruce ~ Leavenworth, KS 66048

KCKCC Pioneer Career Center gives students the opportunity to explore various career paths in a hands-on environment while earning college credit. Credits earned at the Pioneer Career Center may be used toward an Associate Degree at KCKCC or other accepting institutions.

Certified Nursing Assistant

The CNA course will teach basic nursing care skills and concepts needed for the student to function as a nurse's aide. This course is authorized by the state of Kansas upon completion, allows the student to sit for the nurse aide certification examination.

Construction Technology

Students will prepare for careers in plumbing, electrical, and carpentry. Eligible for CERT A after two semesters. Apprenticeship opportunities with more than 10 skilled craft unions.

Criminal Justice

This course provides insight into jobs such as US Customs, private investigation, or working with private police force. Instruction will prepare students for applications, exams, interviews, and background checks respective to this profession.

Culinary Arts

Students will master the fundamental skills of food service in hotels, restaurants, hospitals, catering, etc. Opportunity to receive practical experience in food service preparation for public meetings and banquets.

Early Childhood Education and Development

Knowledge, skills, and techniques gained in this program will assist you in becoming competent in the field of Early Childhood professions.

Electrical Technology

Students will develop basic electrical skills, technical knowledge and related occupational information to prepare for initial employment in the electrical trade.

Heating, Ventilation, and Air Conditioning

HVAC is comprised of heating, ventilation, air conditioning, and refrigeration. Silver brazing, electrical and mechanical troubleshooting, and sheet metal techniques are also practiced. Program approved for EPA and R-401A refrigerant certification.



For more information or to enroll,
contact the KCKCC PCC Office
at 913-288-7750 or pion@kckcc.edu

Leadership

Electives

- **AVID 9** **CP100**
Prerequisite: Apply/interview, instructor consent
 Grade Level: 9
 AVID 9 develops learning, study and academic behavioral skills that are essential to success in rigorous coursework. It acts as a catalyst for schools to develop a culture of college readiness for all students across the campus. In the AVID 9 elective class, students receive daily instruction and support to prepare them for college from a trained AVID Elective teacher. AVID impacts students by using academic strategies like writing to learn, inquiry, collaboration, organizational skills, and critical reading (WICOR). (Satisfies a practical arts credit.)
- **AVID 10** **CP200**
Prerequisite: Apply/interview, instructor consent
 Grade Level: 10
 AVID 10 develops learning, study and academic behavioral skills that are essential to success in rigorous coursework. In the AVID 10 elective class, students receive daily instruction and support to prepare them for college from a trained AVID Elective teacher. AVID impacts students by using academic strategies like writing to learn, inquiry, collaboration, organizational skills, and critical reading (WICOR). (Satisfies a practical arts credit.)
- **AVID 11** **CP301**
Prerequisite: Apply/interview, instructor consent
 Grade Level: 11
 AVID 11 develops learning, study and academic behavioral skills that are essential to success in rigorous coursework. The AVID 11 elective class is the first part in a junior/senior seminar course that focuses on writing and critical thinking expected of first- and second-year college students. AVID impacts students by using academic strategies like writing to learn, inquiry, collaboration, organizational skills, and critical reading (WICOR). (Satisfies a practical arts credit.)
- **AVID 12** **CP401**
Prerequisite: Apply/interview, instructor consent
 Grade Level: 12
 AVID 12 develops learning, study and academic behavioral skills that are essential to success in rigorous coursework. The AVID 12 elective class is the first part in a senior seminar course that focuses on writing and critical thinking expected of first- and second-year college students. AVID impacts students by using academic strategies like writing to learn, inquiry, collaboration, organizational skills, and critical reading (WICOR). (Satisfies a practical arts credit.)
- **Teacher Helper (semester)** **TH300**
 Grade Level: 11-12
 Students must have a cumulative GPA of 2.8 and be up-to-date on graduation requirements to be a teacher helper. (**No credit** is given for a teacher helper.)
- **JROTC** **RO101**
 Grade Level: 9-12
 JROTC is open to all physically fit students 14 years or older. The purpose of the program is to motivate young people to be better citizens. JROTC is an Army supported activity. Students do not incur any obligations to serve in the military. The JROTC cadet is required to participate in physical fitness training, drill and ceremonies. JROTC cadets are invited to participate on special teams such as: honor guards (drill teams), rifle team, drum and bugle corps, raiders, color guards, cadet chorus, saber team, and the junior guard program. Cadets are provided government issued uniforms at no cost. The uniform must be worn one class period each week and on special occasions. Uniforms are required to be returned immediately upon disenrollment or the student incurs the cost of the uniform. Parents are accountable for all equipment issued to cadets. Fundraiser participation is completely voluntary. (JROTC may fulfill the district PE requirement sophomore through senior years.)
- **Freshman Year ROTC LET-1** "Leadership Education and Training 1" is a year-long course of 126 hours. It includes: Citizenship in Action; Leadership Theory and Application; Foundations for Success; Making a Difference with Service Learning; Cadet Challenge (Physical Fitness).
 - **Sophomore Year ROTC LET-2** "Leadership Education and Training 2" is a year-long course of 126 hours. It includes: Leadership Education and Training; Wellness, Fitness, and First Aid; Geography and Earth Science; Citizenship in American History and Government; Making a Difference with Service Learning; Cadet Challenge (Physical Fitness).
 - **Junior Year ROTC LET-3** "Leadership Education and Training 3" is a year-long course of 126 hours. It includes: Career Opportunities; Cadet Challenge (Physical Fitness); Citizenship in Action; Leadership Theory and Application; Foundations for Success; Citizenship in America; History and Government; and Core Service Learning.
 - **Senior Year ROTC LET-4** "Leadership Education and Training 4" is a year-long course of 126 hours. LET -4 focuses primarily on direct leadership training. LET-4 subject areas include: Citizenship in Action; Leadership Theory and Application; NEFE High School Financial Planning Program; Teaching Skills; Making a Difference with Service Learning; Cadet Challenge (Physical Fitness).

*Notes: Class Credit: Adjustments may be made to accommodate transfer students or those wishing to enroll sophomore, junior, or senior years. Students enrolling sophomore, junior, or senior years are advanced in class according to their performance each grading period. Students successfully completing Armed Forces Basic Training between junior and senior years are eligible for class credits. Students successfully completing three or more years can receive service entry recommendations allowing them to enlist in the grade of E-3. Service academy nominations can be given by the senior Army instructor to West Point, the Air Force Academy, and the Naval Academy (Annapolis). Summer camp: Selected LET-2, LET-3 and LET-4 cadets may attend the one week summer leadership camp held in mid-July prior to the new school year. Training includes survival swimming, rappelling, physical fitness training, rope bridge building, skills competition, leadership classes, land navigation, and helicopter orientation flights.

World Language

Electives

World Language

➤ French I

WL101

Prerequisite: C or better in English

Grade Level: 9-12

French I introduces the basic elements of grammar by involving the student in reading, writing, listening, and speaking activities in a cultural context. Tests and quizzes are written, oral, and recorded in format. Instruction is both in French and English. Success in the course requires out-of-class study and homework.

➤ French II

WL201

Prerequisite: C or better in French I

Grade Level: 10-12

French II continues and expands the four basic skills of reading, writing, listening, and speaking introduced in French I. Emphasis is placed on the expansion of vocabulary and the accurate use of structural elements of French in spoken and written forms. Concentration and application are given to verb tenses (present, passé composé and imparfait), idiomatic expressions, and pronouns. Oral presentations and cultural activities are a part of classroom activities. French and English are spoken in class. Success in the course requires out-of-class study and homework.

➤ Spanish I

WL111

Prerequisite: C or better in English

Grade Level: 9-12

Spanish I introduces the basic elements of grammar by involving the student in reading, writing, listening, and speaking activities in a cultural context. Tests and quizzes are written, oral, and taped in format. Instruction is both in Spanish and English. Success in the course requires out-of-class study and homework.

➤ Spanish II

WL211

Prerequisite: C or better in Spanish I

Grade Level: 10-12

Spanish II continues and expands the four basic skills of reading, writing, listening, and speaking introduced in Spanish I. Emphasis is placed on the expansion of vocabulary and the accurate use of structural elements of Spanish in spoken and written forms. Concentration and application are given to verb tenses (present, preterite/imperfect), idiomatic expressions, and pronouns. Oral presentations and cultural activities are a part of classroom activities. Spanish and English are spoken in class. Success in the course requires out-of-class study and homework.

➤ Spanish III

WL311

Prerequisite: C or better in Spanish II

Grade Level: 10-12

Spanish III provides a basic review of the grammar elements studied in Spanish II. Concentration and application are given to Future and Conditional verb tenses. Emphasis is placed on speaking and writing skills. The class includes writing activities, cultural and historical projects and skits, and oral and written summaries. The student is expected to participate in daily class discussions. Spanish and English are spoken in class. Success in the course requires out-of-class study and homework.

College Enrollment/ Advanced Placement Information

Making a Decision

Deciding whether to take advantage of dual-enrollment opportunities, Advanced Placement (AP®) testing, or both can be a challenging decision for students and parents. The LHS Dual-Enrollment/Advanced Placement table outlines which LHS courses are offered for dual-enrollment, which are AP®, and which are both.

Definitions:

Dual and Concurrent Enrollment - Dual-enrollment means that a student is dual enrolled in high school and a college/university. Concurrent enrollment is a form of dual-enrollment where the college course is taught at the high school by high school faculty. To receive college credit through dual/concurrent enrollment, a student must pay tuition to the university for the course, generally each semester. Students must be sophomore, junior or senior status or a freshman student with a gifted IEP.

Advanced Placement (AP®) - AP® courses offer students (grades 9-12) an opportunity to take rigorous college-level courses while in high school with the potential to achieve college credit or qualify for more advanced classes when they begin college. To achieve college credit for an AP® course, students must earn a passing score (score range 1-5) on an AP® exam scheduled each May. Each college/university has its own credit policy for AP® courses.

The following considerations are important in formulating a sound decision:

- Check with the admissions department of the college/university you plan to attend to see if dual-enrollment credits will transfer, as well as how AP® exam scores are handled (how each university handles AP® credit can be examined at www.collegeboard.com/ap/creditpolicy).
- The college major you plan to pursue may affect your decision as well. Check the requirements of your college major.
- There is always value in taking challenging courses even if students/parents decide not to invest in dual-credit options or Advanced Placement testing. Assuming you do well in the course, your admissions/scholarship applications are always strengthened by taking AP® and dual-enrollment courses even if you are not paying to earn credit through one program or the other.

DUAL/CONCURRENT ENROLLMENT INFORMATION

- To enroll in dual/concurrent enrollment courses through KCKCC, students must first complete the online application process at apply.kckcc.edu. Successful completion of this step will generate a student ID number to be used for the enrollment procedure.
- Students who do not already have a qualifying ACT score (18 or above in reading & English; 21 in math) must take the AccuPlacer test to meet the course placement score requirements. Students may take the AccuPlacer test at the Pioneer Career Center, 1901 Spruce St., Leavenworth. Students will need their KCKCC student ID number to take the AccuPlacer.
- Students and parents must complete the KCKCC High School Dual/Concurrent Enrollment Form. These forms can be obtained from the student's high school counselor and/or dual-enrollment teacher.

- For Fall 2025 enrollment, completed KCKCC forms must be turned in to the LHS Guidance Office by Friday, August 15.
- Fees for dual-enrollment courses are \$87 per credit hour, and most classes are 3 credit hours.
- First semester fees are due to KCKCC by the end of September. Second semester fees are due to KCKCC by the end of February.
- Fees for courses can be paid online through KCKCC's Self Service portal at www.kckcc.edu. Fees may also be paid at Pioneer Career Center, or mailed directly to KCKCC (payment by check only).
- Concurrent enrollment forms will be processed by students' high school counselors.
- You may also contact your school counselor or the course teacher if further information is needed.
- In addition to concurrent enrollment courses offered at Leavenworth High School, students may pursue dual credit options through other post-secondary institutions. They must obtain approval from their school counselor and the building principal (paperwork is available in the Guidance Office) to enroll in a course or program. A three credit hour college class equals 0.5 high school credits. A five credit hour college class equals 1 high school credit.

REGISTERING TO TAKE AP® EXAMS

- Registration for AP® exams must be completed by October 2025. The fee for an AP® exam is \$99. As long as funds are available, there is no fee for students receiving free/reduced lunch (if the student later decides not to take the exam then he/she must pay \$40 restitution to Collegeboard). Information concerning exam registration is distributed to parents and students in September. Contact Michael Sullivan, School Counselor & AP® Coordinator, with questions.
- Students with disabilities may be eligible for accommodations on AP® exams. If you are a student with a documented disability through an IEP or Section 504 Plan, see your school counselor early in the school year to complete the necessary paperwork. January 2026 is the final submission deadline for accommodation requests. This process takes time, so speak to your student's school counselor well in advance of this deadline.
- Students receive a score of 1-5 on the exam. Colleges and universities handle credit and placement policies differently for AP® exams. Students/parents should visit www.collegeboard.com/ap/creditpolicy to review the credit and placement policies of nearly 1,000 colleges and universities.
- Get additional information concerning the AP® Program, exams, exam schedules, etc. at <http://www.collegeboard.com/apstudents>. Students can also get information from their AP® teacher or Mr. Sullivan, LHS AP® Coordinator.
- **AP® Scholar Awards!** The College Board grants the following awards to students who take AP® exams:
 - **AP® Scholar** – granted to students who score a 3 or higher on three or more AP® Exams.
 - **AP® Scholar with Honor** – granted to students who earn an average score of at least 3.25 on all AP® Exams taken, and scores of 3 or higher on four or more of these exams.
 - **AP® Scholar with Distinction** – granted to students who earn an average score of at least 3.5 on all AP® Exams taken, and scores of 3 or higher on five or more of these exams.
 - **State AP® Scholar** – granted to the one male and one female student in each U.S. state with scores of 3 or higher on the greatest number of AP® Exams, and then the highest average score on all AP® exams taken.
 - Additional AP® Scholar awards – **National AP® Scholar, DoDEA AP® Scholar, & International AP® Scholar**

College Enrollment/AP Information

LHS COURSE NAME	TYPICAL GRADE-LEVEL	CONCURRENT-ENROLLMENT COURSE THROUGH KCKCC?	KCKCC COURSE NAME/CREDIT HOURS	ADVANCED PLACEMENT COURSE?
ENGLISH				
AP Language & Composition	11	No		Yes
English Composition I/II	12	Yes	1st Sem - ENGL0101 English Composition I/3 Credit Hours 2nd Sem - ENGL0102 English Composition II/3 Credit Hours	No
AP Literature & Composition	12	No		Yes
FINE ARTS				
AP Art History	11/12	No		Yes
AP Art & Design	12	No		Yes
MATHEMATICS				
AP PreCalculus	11/12	No		Yes
AP Calculus AB	11/12	No		Yes
AP Statistics	11/12	No		Yes
College Algebra	11/12	Yes	2nd Sem - Math0106 College Algebra/3 Credit Hours	No
SCIENCE				
AP Biology	11/12	No		Yes
AP Chemistry	11/12	No		Yes
AP Physics 2	11/12	No		Yes
SOCIAL STUDIES				
AP European History	9/10	No		Yes
AP World History	10/12	No		Yes
AP United States History	11	Yes	1st Sem - Hist0104 United States to 1877/3 Credit Hours 2nd Sem - Hist0105 United States since 1877/3 Credit Hours	Yes
AP United States Government & Politics	12	No		Yes
AP Psychology	12	No		Yes

College Preparation Recommendations



KANSAS BOARD OF REGENTS

Kansas Scholars Curriculum & State Scholar Quick Facts

Completion of the Kansas Scholars Curriculum is one of the requirements Kansas residents must meet in order to receive State Scholar designation. This occurs during the senior year of high school.

What are the other requirements to become a State Scholar?

- Students must have taken the ACT between April of the sophomore year and December of the senior year.
- Students must be a Kansas resident.
- Students must have their curriculum and 7th semester GPA certified on the official roster by the high school counselor, registrar, or similar official.

KANSAS SCHOLARS CURRICULUM

English - 4 years

One unit to be taken each year. Must include substantial recurrent practice in writing extensive and structured papers, extensive reading of significant literature, and significant experience in speaking and listening.

Mathematics - 4 years

Algebra I, Algebra II, Geometry, and one unit of advanced mathematics-- suggested courses include: Analytic Geometry, Trigonometry, Advanced Algebra, Probability and Statistics, Functions or Calculus. Completion of Algebra I in 8th grade is acceptable; the student would then only need three years of math in high school.

Science - 3 years

One year each in Biology, Chemistry, and Physics, each of which include an average of one laboratory period a week. Applied/technical courses may not substitute for a unit of natural science credit.

Social Studies - 3 years

One unit of U.S. History; minimum of one-half unit of U.S. Government and minimum of one-half unit selected from: World History, World Geography or International Relations; and one unit selected from: Psychology, Economics, U.S. Government, U.S. History, Current Social Issues, Sociology, Anthropology, and Race and Ethnic Group Relations. Half unit courses may be combined to make this a whole unit.

World Language - 2 years

Two years of one language. Latin and Sign Language are accepted.

What is the benefit of completing the Kansas Scholars Curriculum?

Students that complete this curriculum and meet the other requirements, may be designated as State Scholars, which makes one eligible to receive the Kansas State Scholarship as provided by the Kansas Legislature.

The academic profile of recent scholars include an average ACT of 29 and an average GPA of 3.92. State Scholars may receive up to \$1,000 annually for up to four undergraduate years (five, if enrolled in a designated five-year program), based on financial need and the availability of State funds. Financial need is measured by federal methodology using data submitted on the FAFSA.

For more information, contact us at (785) 430-4300 or at scholars@ksbor.org.

College Preparation Recommendations



Qualified Admissions

The six state universities in Kansas--Emporia State University, Fort Hays State University, Kansas State University, Pittsburg State University, The University of Kansas, and Wichita State University--use the standards below, set by the Kansas Board of Regents, to review applicants for undergraduate admission.

ACCREDITED HIGH SCHOOL

Freshman applicants, under the age of 21, who graduate from an accredited high school, will be guaranteed admission to six state universities by meeting the Qualified Admissions requirements designated by each university, as follows:

ESU, PSU, FHSU, & WSU:

- Cumulative High School GPA 2.25+ or ACT 21+ (SAT 1060)*

K-State:

- Cumulative High School GPA 3.25+ or ACT 21+ (SAT 1060)*

KU:

- Cumulative High School GPA 3.25+
OR Cumulative GPA 2.0+ and ACT 21+ (SAT 1060)*

ALL Institutions Require:

- Cumulative GPA 2.0+ for College Credits earned in High School

KANSAS SCHOLARS CURRICULUM IS RECOMMENDED BUT NOT REQUIRED: To best prepare for the rigor of college-level courses, the Kansas Scholars curriculum is recommended.

One unit is equivalent to one year, or two semesters:



English
4 units



Math
4 units
1 unit of each:
Algebra I, Geometry,
Algebra II
1 unit: Advanced Math
See [KS Scholars page](#)
For Math course list



Social Science
3 units
1 unit U.S. History
.5 unit U.S. Gov
.5 unit World History
1 unit: Social Science course
See [KS Scholars Page](#) for
Social Science course list



Science
3 units
1 unit of each:
Biology, Chemistry, &
Physics



Foreign Language
2 units of the same
language

Division I Academic Standards

Division I schools require you to meet academic standards. To be eligible to practice, compete and receive an athletics scholarship in your first year of full-time enrollment, you must meet the following requirements:



DIVISION I

1. Earn 16 NCAA-approved core-course credits in the following areas:

ENGLISH	MATH (Algebra I or higher)	SCIENCE (Including one year of lab, if offered)	EXTRA (English, math or science)	SOCIAL SCIENCE	OTHER Any area listed to the left or courses listed in additional discipline (world language, comparative religion or philosophy)
4 years	3 years	2 years	1 year	2 years	4 years

2. Complete your 16 NCAA-approved core-course credits in eight academic semesters or four consecutive academic years from the start of ninth grade. If you graduate from high school early, you still must meet core-course requirements.
3. Complete 10 of your 16 NCAA-approved core-course credits, including seven in English, math or science, before the start of your seventh semester. Once you begin your seventh semester, any course needed to meet the 10/7 requirement cannot be replaced or repeated.
4. Earn a minimum 2.3 **core-course GPA**.
5. Ask your high school counselor to upload your **final official transcript** with proof of graduation to your Eligibility Center account.

EARLY ACADEMIC QUALIFIER

If you meet **specific criteria** after six semesters of high school, you may be deemed an early academic qualifier for Division I and may practice, compete and receive an athletics scholarship during your first year of full-time enrollment.

QUALIFIER

You may practice, compete and receive an athletics scholarship during your first year of full-time enrollment.

ACADEMIC REDSHIRT

You may practice during your first regular academic term and receive an athletics scholarship during your first year of full-time enrollment but may NOT compete during your first year of full-time enrollment. You must pass either eight quarter or nine semester hours to practice in the next term.

NONQUALIFIER

You will not be able to practice, compete or receive an athletics scholarship during your first year of full-time enrollment.



GRADE 9 REGISTER

- » If you haven't yet, **register** for a free Profile Page account at eligibilitycenter.org for information on NCAA initial-eligibility requirements.
- » Use NCAA Research's **interactive map** to help locate NCAA schools you're interested in attending.
- » Find your high school's list of NCAA-approved core courses at eligibilitycenter.org/courselist to ensure you're taking the right courses, and earn the best grades possible!

GRADE 10 PLAN

- » If you're being actively recruited by an NCAA school and have a Profile Page account, **transition** it to the required **certification account**.
- » Monitor the **task list** in your NCAA Eligibility Center account for next steps.
- » At the end of the school year, ask your high school counselor from each school you attend to upload an official transcript to your Eligibility Center account.
- » If you fall behind academically, ask your high school counselor for help finding **approved courses** you can take.

GRADE 11 STUDY

- » Ensure your **sports participation** information is correct in your Eligibility Center account.
- » Check with your high school counselor to make sure you're on track to complete the required number of NCAA-approved **core courses** and graduate on time with your class.
- » Share your **NCAA ID** with NCAA schools recruiting you so each school can place you on its **institutional request list**.
- » At the end of the school year, ask your high school counselor from each school you attend to upload an official transcript to your Eligibility Center account.

GRADE 12 GRADUATE

- » **Request your final amateurism certification** beginning April 1 (fall enrollees) or Oct. 1 (winter/spring enrollees) in your Eligibility Center account at eligibilitycenter.org.
- » Apply and be accepted to the NCAA school you plan to attend.
- » Complete your final NCAA-approved **core courses** as you prepare for graduation.
- » After you graduate, ask your high school counselor to upload your final **official transcript** with proof of graduation to your Eligibility Center account.

How to plan your high school courses to meet the 16 core-course requirement:

$$4 \times 4 = 16$$

9th GRADE

(1) English
(1) Math
(1) Science
(1) Social Science
and/or other

4 CORE COURSES

10th GRADE

(1) English
(1) Math
(1) Science
(1) Social Science
and/or other

4 CORE COURSES

11th GRADE

(1) English
(1) Math
(1) Science
(1) Social Science
and/or other

4 CORE COURSES

12th GRADE

(1) English
(1) Math
(1) Science
(1) Social Science
and/or other

4 CORE COURSES

CONTACT THE NCAA ELIGIBILITY CENTER

U.S. and Canada (except Quebec):
877-262-1492 (toll free), Monday-Friday
9 a.m. to 5 p.m. Eastern time
International (including Quebec):
on.ncaa.com/IntlContact



[@ncaaec](https://twitter.com/ncaaec) [@ncaaec](https://www.youtube.com/channel/UCncaaec) [@ncaaec](https://www.facebook.com/ncaaec) [@playcollegesports](https://www.instagram.com/playcollegesports)

Division II Academic Standards

Division II schools require you to meet academic standards. To be eligible to practice, compete and receive an athletics scholarship in your first year of full-time enrollment, you must meet the following requirements:

NCAA DIVISION II

MAKE IT YOURS.

1. Earn 16 NCAA-approved core-course credits in the following areas:

ENGLISH

3 years

MATH
(Algebra I
or higher)

2 years

SCIENCE
(Including one
year of lab,
if offered)

2 years

EXTRA
(English, math
or science)

3 years

SOCIAL
SCIENCE

2 years

OTHER
Any area listed to the
left or courses listed
in additional discipline
(world language,
comparative religion
or philosophy)

4 years

2. Earn a minimum 2.2 **core-course GPA**.
3. Ask your high school counselor to upload your **final official transcript** with proof of graduation to your Eligibility Center account.

EARLY ACADEMIC QUALIFIER

If you meet **specific criteria** after six semesters of high school, you may be deemed an early academic qualifier for Division II and may practice, compete and receive an athletics scholarship during your first year of full-time enrollment.

QUALIFIER

You may practice, compete and receive an athletics scholarship during your first year of full-time enrollment.

PARTIAL QUALIFIER

You may practice and receive an athletics scholarship but may NOT compete during your first year of full-time enrollment.



GRADE
9
REGISTER

- » If you haven't yet, **register** for a free Profile Page account at eligibilitycenter.org for information on NCAA initial-eligibility requirements.
- » Use NCAA Research's **interactive map** to help locate NCAA schools you're interested in attending.
- » Find your high school's list of NCAA-approved core courses at eligibilitycenter.org/courselist to ensure you're taking the right courses, and earn the best grades possible!

GRADE
10
PLAN

- » If you're being actively recruited by an NCAA school and have a Profile Page account, **transition** it to the required **certification account**.
- » Monitor the **task list** in your NCAA Eligibility Center account for next steps.
- » At the end of the school year, ask your high school counselor from each school you attend to upload an official transcript to your Eligibility Center account.
- » If you fall behind academically, ask your high school counselor for help finding **approved courses** you can take.

GRADE
11
STUDY

- » Ensure your **sports participation** information is correct in your Eligibility Center account.
- » Check with your high school counselor to make sure you're on track to complete the required number of NCAA-approved **core courses**.
- » Share your **NCAA ID** with NCAA schools recruiting you so each school can place you on its **institutional request list**.
- » At the end of the school year, ask your high school counselor from each school you attend to upload an official transcript to your Eligibility Center account.

GRADE
12
GRADUATE

- » **Request your final amateurism certification** beginning April 1 (fall enrollees) or Oct. 1 (winter/spring enrollees) in your Eligibility Center account at eligibilitycenter.org.
- » Apply and be accepted to the NCAA school you plan to attend.
- » Complete your final NCAA-approved **core courses** as you prepare for graduation.
- » After you graduate, ask your high school counselor to upload your final **official transcript** with proof of graduation to your Eligibility Center account.

How to plan your high school courses to meet the 16 core-course requirement:

$$4 \times 4 = 16$$

9th GRADE

- (1) English
- (1) Math
- (1) Science
- (1) Social Science and/or other

4 CORE COURSES

10th GRADE

- (1) English
- (1) Math
- (1) Science
- (1) Social Science and/or other

4 CORE COURSES

11th GRADE

- (1) English
- (1) Math
- (1) Science
- (1) Social Science and/or other

4 CORE COURSES

12th GRADE

- (1) English
- (1) Math
- (1) Science
- (1) Social Science and/or other

4 CORE COURSES



CONTACT THE NCAA ELIGIBILITY CENTER

U.S. and Canada (except Quebec):
877-262-1492 (toll free), Monday-Friday
9 a.m. to 5 p.m. Eastern time
International (including Quebec):
on.ncaa.com/IntlContact



[@ncaaec](https://www.facebook.com/ncaaec) [@ncaaec](https://www.instagram.com/ncaaec) [@ncaaec](https://www.youtube.com/ncaaec) [@ncaaec](https://www.tiktok.com/@ncaaec) [@ncaaec](https://www.snapchat.com/add/ncaaec) [@ncaaec](https://www.twitch.tv/ncaaec) [@ncaaec](https://www.linkedin.com/company/ncaa-eligibility-center) [@ncaaec](https://www.pinterest.com/ncaaec) [@ncaaec](https://www.threads.net/@ncaaec) [@ncaaec](https://www.youtube.com/ncaaec) [@ncaaec](https://www.tiktok.com/@ncaaec) [@ncaaec](https://www.snapchat.com/add/ncaaec) [@ncaaec](https://www.twitch.tv/ncaaec) [@ncaaec](https://www.linkedin.com/company/ncaa-eligibility-center) [@ncaaec](https://www.pinterest.com/ncaaec) [@ncaaec](https://www.threads.net/@ncaaec) [@ncaaec](https://www.youtube.com/ncaaec) [@ncaaec](https://www.tiktok.com/@ncaaec) [@ncaaec](https://www.snapchat.com/add/ncaaec) [@ncaaec](https://www.twitch.tv/ncaaec) [@ncaaec](https://www.linkedin.com/company/ncaa-eligibility-center) [@ncaaec](https://www.pinterest.com/ncaaec) [@ncaaec](https://www.threads.net/@ncaaec) [@ncaaec](https://www.youtube.com/ncaaec) [@ncaaec](https://www.tiktok.com/@ncaaec) [@ncaaec](https://www.snapchat.com/add/ncaaec) [@ncaaec](https://www.twitch.tv/ncaaec) [@ncaaec](https://www.linkedin.com/company/ncaa-eligibility-center) [@ncaaec](https://www.pinterest.com/ncaaec) [@ncaaec](https://www.threads.net/@ncaaec) [@ncaaec](https://www.youtube.com/ncaaec) [@ncaaec](https://www.tiktok.com/@ncaaec) [@ncaaec](https://www.snapchat.com/add/ncaaec) [@ncaaec](https://www.twitch.tv/ncaaec) [@ncaaec](https://www.linkedin.com/company/ncaa-eligibility-center) [@ncaaec](https://www.pinterest.com/ncaaec) [@ncaaec](https://www.threads.net/@ncaaec) [@ncaaec](https://www.youtube.com/ncaaec) [@ncaaec](https://www.tiktok.com/@ncaaec) [@ncaaec](https://www.snapchat.com/add/ncaaec) [@ncaaec](https://www.twitch.tv/ncaaec) [@ncaaec](https://www.linkedin.com/company/ncaa-eligibility-center) [@ncaaec](https://www.pinterest.com/ncaaec) [@ncaaec](https://www.threads.net/@ncaaec) [@ncaaec](https://www.youtube.com/ncaaec) [@ncaaec](https://www.tiktok.com/@ncaaec) [@ncaaec](https://www.snapchat.com/add/ncaaec) [@ncaaec](https://www.twitch.tv/ncaaec) [@ncaaec](https://www.linkedin.com/company/ncaa-eligibility-center) [@ncaaec](https://www.pinterest.com/ncaaec) [@ncaaec](https://www.threads.net/@ncaaec) [@ncaaec](https://www.youtube.com/ncaaec) [@ncaaec](https://www.tiktok.com/@ncaaec) [@ncaaec](https://www.snapchat.com/add/ncaaec) [@ncaaec](https://www.twitch.tv/ncaaec) [@ncaaec](https://www.linkedin.com/company/ncaa-eligibility-center) [@ncaaec](https://www.pinterest.com/ncaaec) [@ncaaec](https://www.threads.net/@ncaaec) [@ncaaec](https://www.youtube.com/ncaaec) [@ncaaec](https://www.tiktok.com/@ncaaec) [@ncaaec](https://www.snapchat.com/add/ncaaec) [@ncaaec](https://www.twitch.tv/ncaaec) [@ncaaec](https://www.linkedin.com/company/ncaa-eligibility-center) [@ncaaec](https://www.pinterest.com/ncaaec) [@ncaaec](https://www.threads.net/@ncaaec) [@ncaaec](https://www.youtube.com/ncaaec) [@ncaaec](https://www.tiktok.com/@ncaaec) [@ncaaec](https://www.snapchat.com/add/ncaaec) [@ncaaec](https://www.twitch.tv/ncaaec) [@ncaaec](https://www.linkedin.com/company/ncaa-eligibility-center) [@ncaaec](https://www.pinterest.com/ncaaec) [@ncaaec](https://www.threads.net/@ncaaec) [@ncaaec](https://www.youtube.com/ncaaec) [@ncaaec](https://www.tiktok.com/@ncaaec) [@ncaaec](https://www.snapchat.com/add/ncaaec) [@ncaaec](https://www.twitch.tv/ncaaec) [@ncaaec](https://www.linkedin.com/company/ncaa-eligibility-center) [@ncaaec](https://www.pinterest.com/ncaaec) [@ncaaec](https://www.threads.net/@ncaaec) [@ncaaec](https://www.youtube.com/ncaaec) [@ncaaec](https://www.tiktok.com/@ncaaec) [@ncaaec](https://www.snapchat.com/add/ncaaec) [@ncaaec](https://www.twitch.tv/ncaaec) [@ncaaec](https://www.linkedin.com/company/ncaa-eligibility-center) [@ncaaec](https://www.pinterest.com/ncaaec) [@ncaaec](https://www.threads.net/@ncaaec) [@ncaaec](https://www.youtube.com/ncaaec) [@ncaaec](https://www.tiktok.com/@ncaaec) [@ncaaec](https://www.snapchat.com/add/ncaaec) [@ncaaec](https://www.twitch.tv/ncaaec) [@ncaaec](https://www.linkedin.com/company/ncaa-eligibility-center) [@ncaaec](https://www.pinterest.com/ncaaec) [@ncaaec](https://www.threads.net/@ncaaec) [@ncaaec](https://www.youtube.com/ncaaec) [@ncaaec](https://www.tiktok.com/@ncaaec) [@ncaaec](https://www.snapchat.com/add/ncaaec) [@ncaaec](https://www.twitch.tv/ncaaec) [@ncaaec](https://www.linkedin.com/company/ncaa-eligibility-center) [@ncaaec](https://www.pinterest.com/ncaaec) [@ncaaec](https://www.threads.net/@ncaaec) [@ncaaec](https://www.youtube.com/ncaaec) [@ncaaec](https://www.tiktok.com/@ncaaec) [@ncaaec](https://www.snapchat.com/add/ncaaec) [@ncaaec](https://www.twitch.tv/ncaaec) [@ncaaec](https://www.linkedin.com/company/ncaa-eligibility-center) [@ncaaec](https://www.pinterest.com/ncaaec) [@ncaaec](https://www.threads.net/@ncaaec) [@ncaaec](https://www.youtube.com/ncaaec) [@ncaaec](https://www.tiktok.com/@ncaaec) [@ncaaec](https://www.snapchat.com/add/ncaaec) [@ncaaec](https://www.twitch.tv/ncaaec) [@ncaaec](https://www.linkedin.com/company/ncaa-eligibility-center) [@ncaaec](https://www.pinterest.com/ncaaec) [@ncaaec](https://www.threads.net/@ncaaec) [@ncaaec](https://www.youtube.com/ncaaec) [@ncaaec](https://www.tiktok.com/@ncaaec) [@ncaaec](https://www.snapchat.com/add/ncaaec) [@ncaaec](https://www.twitch.tv/ncaaec) [@ncaaec](https://www.linkedin.com/company/ncaa-eligibility-center) [@ncaaec](https://www.pinterest.com/ncaaec) [@ncaaec](https://www.threads.net/@ncaaec) [@ncaaec](https://www.youtube.com/ncaaec) [@ncaaec](https://www.tiktok.com/@ncaaec) [@ncaaec](https://www.snapchat.com/add/ncaaec) [@ncaaec](https://www.twitch.tv/ncaaec) [@ncaaec](https://www.linkedin.com/company/ncaa-eligibility-center) [@ncaaec](https://www.pinterest.com/ncaaec) [@ncaaec](https://www.threads.net/@ncaaec) [@ncaaec](https://www.youtube.com/ncaaec) [@ncaaec](https://www.tiktok.com/@ncaaec) [@ncaaec](https://www.snapchat.com/add/ncaaec) [@ncaaec](https://www.twitch.tv/ncaaec) [@ncaaec](https://www.linkedin.com/company/ncaa-eligibility-center) [@ncaaec](https://www.pinterest.com/ncaaec) [@ncaaec](https://www.threads.net/@ncaaec) [@ncaaec](https://www.youtube.com/ncaaec) [@ncaaec](https://www.tiktok.com/@ncaaec) [@ncaaec](https://www.snapchat.com/add/ncaaec) [@ncaaec](https://www.twitch.tv/ncaaec) [@ncaaec](https://www.linkedin.com/company/ncaa-eligibility-center) [@ncaaec](https://www.pinterest.com/ncaaec) [@ncaaec](https://www.threads.net/@ncaaec) [@ncaaec](https://www.youtube.com/ncaaec) [@ncaaec](https://www.tiktok.com/@ncaaec) [@ncaaec](https://www.snapchat.com/add/ncaaec) [@ncaaec](https://www.twitch.tv/ncaaec) [@ncaaec](https://www.linkedin.com/company/ncaa-eligibility-center) [@ncaaec](https://www.pinterest.com/ncaaec) [@ncaaec](https://www.threads.net/@ncaaec) [@ncaaec](https://www.youtube.com/ncaaec) [@ncaaec](https://www.tiktok.com/@ncaaec) [@ncaaec](https://www.snapchat.com/add/ncaaec) [@ncaaec](https://www.twitch.tv/ncaaec) [@ncaaec](https://www.linkedin.com/company/ncaa-eligibility-center) [@ncaaec](https://www.pinterest.com/ncaaec) [@ncaaec](https://www.threads.net/@ncaaec) [@ncaaec](https://www.youtube.com/ncaaec) [@ncaaec](https://www.tiktok.com/@ncaaec) [@ncaaec](https://www.snapchat.com/add/ncaaec) [@ncaaec](https://www.twitch.tv/ncaaec) [@ncaaec](https://www.linkedin.com/company/ncaa-eligibility-center) [@ncaaec](https://www.pinterest.com/ncaaec) [@ncaaec](https://www.threads.net/@ncaaec) [@ncaaec](https://www.youtube.com/ncaaec) [@ncaaec](https://www.tiktok.com/@ncaaec) [@ncaaec](https://www.snapchat.com/add/ncaaec) [@ncaaec](https://www.twitch.tv/ncaaec) [@ncaaec](https://www.linkedin.com/company/ncaa-eligibility-center) [@ncaaec](https://www.pinterest.com/ncaaec) [@ncaaec](https://www.threads.net/@ncaaec) [@ncaaec](https://www.youtube.com/ncaaec) [@ncaaec](https://www.tiktok.com/@ncaaec) [@ncaaec](https://www.snapchat.com/add/ncaaec) [@ncaaec](https://www.twitch.tv/ncaaec) [@ncaaec](https://www.linkedin.com/company/ncaa-eligibility-center) [@ncaaec](https://www.pinterest.com/ncaaec) [@ncaaec](https://www.threads.net/@ncaaec) [@ncaaec](https://www.youtube.com/ncaaec) [@ncaaec](https://www.tiktok.com/@ncaaec) [@ncaaec](https://www.snapchat.com/add/ncaaec) [@ncaaec](https://www.twitch.tv/ncaaec) [@ncaaec](https://www.linkedin.com/company/ncaa-eligibility-center) [@ncaaec](https://www.pinterest.com/ncaaec) [@ncaaec](https://www.threads.net/@ncaaec) [@ncaaec](https://www.youtube.com/ncaaec) [@ncaaec](https://www.tiktok.com/@ncaaec) [@ncaaec](https://www.snapchat.com/add/ncaaec) [@ncaaec](https://www.twitch.tv/ncaaec) [@ncaaec](https://www.linkedin.com/company/ncaa-eligibility-center) [@ncaaec](https://www.pinterest.com/ncaaec) [@ncaaec](https://www.threads.net/@ncaaec) [@ncaaec](https://www.youtube.com/ncaaec) [@ncaaec](https://www.tiktok.com/@ncaaec) [@ncaaec](https://www.snapchat.com/add/ncaaec) [@ncaaec](https://www.twitch.tv/ncaaec) [@ncaaec](https://www.linkedin.com/company/ncaa-eligibility-center) [@ncaaec](https://www.pinterest.com/ncaaec) [@ncaaec](https://www.threads.net/@ncaaec) [@ncaaec](https://www.youtube.com/ncaaec) [@ncaaec](https://www.tiktok.com/@ncaaec) [@ncaaec](https://www.snapchat.com/add/ncaaec) [@ncaaec](https://www.twitch.tv/ncaaec) [@ncaaec](https://www.linkedin.com/company/ncaa-eligibility-center) [@ncaaec](https://www.pinterest.com/ncaaec) [@ncaaec](https://www.threads.net/@ncaaec) [@ncaaec](https://www.youtube.com/ncaaec) [@ncaaec](https://www.tiktok.com/@ncaaec) [@ncaaec](https://www.snapchat.com/add/ncaaec) [@ncaaec](https://www.twitch.tv/ncaaec) [@ncaaec](https://www.linkedin.com/company/ncaa-eligibility-center) [@ncaaec](https://www.pinterest.com/ncaaec) [@ncaaec](https://www.threads.net/@ncaaec) [@ncaaec](https://www.youtube.com/ncaaec) [@ncaaec](https://www.tiktok.com/@ncaaec) [@ncaaec](https://www.snapchat.com/add/ncaaec) [@ncaaec](https://www.twitch.tv/ncaaec) [@ncaaec](https://www.linkedin.com/company/ncaa-eligibility-center) [@ncaaec](https://www.pinterest.com/ncaaec) [@ncaaec](https://www.threads.net/@ncaaec) [@ncaaec](https://www.youtube.com/ncaaec) [@ncaaec](https://www.tiktok.com/@ncaaec) [@ncaaec](https://www.snapchat.com/add/ncaaec) [@ncaaec](https://www.twitch.tv/ncaaec) [@ncaaec](https://www.linkedin.com/company/ncaa-eligibility-center) [@ncaaec](https://www.pinterest.com/ncaaec) [@ncaaec](https://www.threads.net/@ncaaec) [@ncaaec](https://www.youtube.com/ncaaec) [@ncaaec](https://www.tiktok.com/@ncaaec) [@ncaaec](https://www.snapchat.com/add/ncaaec) [@ncaaec](https://www.twitch.tv/ncaaec) [@ncaaec](https://www.linkedin.com/company/ncaa-eligibility-center) [@ncaaec](https://www.pinterest.com/ncaaec) [@ncaaec](https://www.threads.net/@ncaaec) [@ncaaec](https://www.youtube.com/ncaaec) [@ncaaec](https://www.tiktok.com/@ncaaec) [@ncaaec](https://www.snapchat.com/add/ncaaec) [@ncaaec](https://www.twitch.tv/ncaaec) [@ncaaec](https://www.linkedin.com/company/ncaa-eligibility-center) [@ncaaec](https://www.pinterest.com/ncaaec) [@ncaaec](https://www.threads.net/@ncaaec) [@ncaaec](https://www.youtube.com/ncaaec) [@ncaaec](https://www.tiktok.com/@ncaaec) [@ncaaec](https://www.snapchat.com/add/ncaaec) [@ncaaec](https://www.twitch.tv/ncaaec) [@ncaaec](https://www.linkedin.com/company/ncaa-eligibility-center) [@ncaaec](https://www.pinterest.com/ncaaec) [@ncaaec](https://www.threads.net/@ncaaec) [@ncaaec](https://www.youtube.com/ncaaec) [@ncaaec](https://www.tiktok.com/@ncaaec) [@ncaaec](https://www.snapchat.com/add/ncaaec) [@ncaaec](https://www.twitch.tv/ncaaec) [@ncaaec](https://www.linkedin.com/company/ncaa-eligibility-center) [@ncaaec](https://www.pinterest.com/ncaaec) [@ncaaec](https://www.threads.net/@ncaaec) [@ncaaec](https://www.youtube.com/ncaaec) [@ncaaec](https://www.tiktok.com/@ncaaec) [@ncaaec](https://www.snapchat.com/add/ncaaec) [@ncaaec](https://www.twitch.tv/ncaaec) [@ncaaec](https://www.linkedin.com/company/ncaa-eligibility-center) [@ncaaec](https://www.pinterest.com/ncaaec) [@ncaaec](https://www.threads.net/@ncaaec) [@ncaaec](https://www.youtube.com/ncaaec) [@ncaaec](https://www.tiktok.com/@ncaaec) [@ncaaec](https://www.snapchat.com/add/ncaaec) [@ncaaec](https://www.twitch.tv/ncaaec) [@ncaaec](https://www.linkedin.com/company/ncaa-eligibility-center) [@ncaaec](https://www.pinterest.com/ncaaec) [@ncaaec](https://www.threads.net/@ncaaec) [@ncaaec](https://www.youtube.com/ncaaec) [@ncaaec](https://www.tiktok.com/@ncaaec) [@ncaaec](https://www.snapchat.com/add/ncaaec) [@ncaaec](https://www.twitch.tv/ncaaec) [@ncaaec](https://www.linkedin.com/company/ncaa-eligibility-center) [@ncaaec](https://www.pinterest.com/ncaaec) [@ncaaec](https://www.threads.net/@ncaaec) [@ncaaec](https://www.youtube.com/ncaaec) [@ncaaec](https://www.tiktok.com/@ncaaec) [@ncaaec](https://www.snapchat.com/add/ncaaec) [@ncaaec](https://www.twitch.tv/ncaaec) [@ncaaec](https://www.linkedin.com/company/ncaa-eligibility-center) [@ncaaec](https://www.pinterest.com/ncaaec) [@ncaaec](https://www.threads.net/@ncaaec) [@ncaaec](https://www.youtube.com/ncaaec) [@ncaaec](https://www.tiktok.com/@ncaaec) [@ncaaec](https://www.snapchat.com/add/ncaaec) [@ncaaec](https://www.twitch.tv/ncaaec) [@ncaaec](https://www.linkedin.com/company/ncaa-eligibility-center) [@ncaaec](https://www.pinterest.com/ncaaec) [@ncaaec](https://www.threads.net/@ncaaec) [@ncaaec](https://www.youtube.com/ncaaec) [@ncaaec](https://www.tiktok.com/@ncaaec) [@ncaaec](https://www.snapchat.com/add/ncaaec) [@ncaaec](https://www.twitch.tv/ncaaec) [@ncaaec](https://www.linkedin.com/company/ncaa-eligibility-center) [@ncaaec](https://www.pinterest.com/ncaaec) [@ncaaec](https://www.threads.net/@ncaaec) [@ncaaec](https://www.youtube.com/ncaaec) [@ncaaec](https://www.tiktok.com/@ncaaec) [@ncaaec](https://www.snapchat.com/add/ncaaec) [@ncaaec](https://www.twitch.tv/ncaaec) [@ncaaec](https://www.linkedin.com/company/ncaa-eligibility-center) [@ncaaec](https://www.pinterest.com/ncaaec) [@ncaaec](https://www.threads.net/@ncaaec) [@ncaaec](https://www.youtube.com/ncaaec) [@ncaaec](https://www.tiktok.com/@ncaaec) [@ncaaec](https://www.snapchat.com/add/ncaaec) [@ncaaec](https://www.twitch.tv/ncaaec) [@ncaaec](https://www.linkedin.com/company/ncaa-eligibility-center) [@ncaaec](https://www.pinterest.com/ncaaec) [@ncaaec](https://www.threads.net/@ncaaec) [@ncaaec](https://www.youtube.com/ncaaec) [@ncaaec](https://www.tiktok.com/@ncaaec) [@ncaaec](https://www.snapchat.com/add/ncaaec) [@ncaaec](https://www.twitch.tv/ncaaec) [@ncaaec](https://www.linkedin.com/company/ncaa-eligibility-center) [@ncaaec](https://www.pinterest.com/ncaaec) [@ncaaec](https://www.threads.net/@ncaaec) [@ncaaec](https://www.youtube.com/ncaaec) [@ncaaec](https://www.tiktok.com/@ncaaec) [@ncaaec](https://www.snapchat.com/add/ncaaec) [@ncaaec](https://www.twitch.tv/ncaaec) [@ncaaec](https://www.linkedin.com/company/ncaa-eligibility-center) [@ncaaec](https://www.pinterest.com/ncaaec) [@ncaaec](https://www.threads.net/@ncaaec) [@ncaaec](https://www.youtube.com/ncaaec) [@ncaaec](https://www.tiktok.com/@ncaaec) [@ncaaec](https://www.snapchat.com/add/ncaaec) [@ncaaec](https://www.twitch.tv/ncaaec) [@ncaaec](https://www.linkedin.com/company/ncaa-eligibility-center) [@ncaaec](https://www.pinterest.com/ncaaec) [@ncaaec](https://www.threads.net/@ncaaec) [@ncaaec](https://www.youtube.com/ncaaec) [@ncaaec](https://www.tiktok.com/@ncaaec) [@ncaaec](https://www.snapchat.com/add/ncaaec) [@ncaaec](https://www.twitch.tv/ncaaec) [@ncaaec](https://www.linkedin.com/company/ncaa-eligibility-center) [@ncaaec](https://www.pinterest.com/ncaaec) [@ncaaec](https://www.threads.net/@ncaaec) [@ncaaec](https://www.youtube.com/ncaaec) [@ncaaec](https://www.tiktok.com/@ncaaec) [@ncaaec](https://www.snapchat.com/add/ncaaec) [@ncaaec](https://www.twitch.tv/ncaaec) [@ncaaec](https://www.linkedin.com/company/ncaa-eligibility-center) [@ncaaec](https://www.pinterest.com/ncaaec) [@ncaaec](https://www.threads.net/@ncaaec) [@ncaaec](https://www.youtube.com/ncaaec) [@ncaaec](https://www.tiktok.com/@ncaaec) [@ncaaec](https://www.snapchat.com/add/ncaaec) [@ncaaec](https://www.twitch.tv/ncaaec) [@ncaaec](https://www.linkedin.com/company/ncaa-eligibility-center) [@ncaaec](https://www.pinterest.com/ncaaec) [@ncaaec](https://www.threads.net/@ncaaec) [@ncaaec](https://www.youtube.com/ncaaec) [@ncaaec](https://www.tiktok.com/@ncaaec) [@ncaaec](https://www.snapchat.com/add/ncaaec) [@ncaaec](https://www.twitch.tv/ncaaec) [@ncaaec](https://www.linkedin.com/company/ncaa-eligibility-center) [@ncaaec](https://www.pinterest.com/ncaaec) [@ncaaec](https://www.threads.net/@ncaaec) [@ncaaec](https://www.youtube.com/ncaaec) [@ncaaec](https://www.tiktok.com/@ncaaec) [@ncaaec](https://www.snapchat.com/add/ncaaec) [@ncaaec](https://www.twitch.tv/ncaaec) [@ncaaec](https://www.linkedin.com/company/ncaa-eligibility-center) [@ncaaec](https://www.pinterest.com/ncaaec) [@ncaaec](https://www.threads.net/@ncaaec) [@ncaaec](https://www.youtube.com/ncaaec) [@ncaaec](https://www.tiktok.com/@ncaaec) [@ncaaec](https://www.snapchat.com/add/ncaaec) [@ncaaec](https://www.twitch.tv/ncaaec) [@ncaaec](https://www.linkedin.com/company/ncaa-eligibility-center) [@ncaaec](https://www.pinterest.com/ncaaec) [@ncaaec](https://www.threads.net/@ncaaec) [@ncaaec](https://www.youtube.com/ncaaec) [@ncaaec](https://www.tiktok.com/@ncaaec) [@ncaaec](https://www.snapchat.com/add/ncaaec) [@ncaaec](https://www.twitch.tv/ncaaec) [@ncaaec](https://www.linkedin.com/company/ncaa-eligibility-center) [@ncaaec](https://www.pinterest.com/ncaaec) [@ncaaec](https://www.threads.net/@ncaaec) [@ncaaec](https://www.youtube.com/ncaaec) [@ncaaec](https://www.tiktok.com/@ncaaec) [@ncaaec](https://www.snapchat.com/add/ncaaec) [@ncaaec](https://www.twitch.tv/ncaaec) [@ncaaec](https://www.linkedin.com/company/ncaa-eligibility-center) [@ncaaec](https://www.pinterest.com/ncaaec) [@ncaaec](https://www.threads.net/@ncaaec) [@ncaaec](https://www.youtube.com/ncaaec) [@ncaaec](https://www.tiktok.com/@ncaaec) [@ncaaec](https://www.snapchat.com/add/ncaaec) [@ncaaec](https://www.twitch.tv/ncaaec) [@ncaaec](https://www.linkedin.com/company/ncaa-eligibility-center) [@ncaaec](https://www.pinterest.com/ncaaec) [@ncaaec](https://www.threads.net/@ncaaec) [@ncaaec](https://www.youtube.com/ncaaec) [@ncaaec](https://www.tiktok.com/@ncaaec) [@ncaaec](https://www.snapchat.com/add/ncaaec) [@ncaaec](https://www.twitch.tv/ncaaec) [@ncaaec](https://www.linkedin.com/company/ncaa-eligibility-center) [@ncaaec](https://www.pinterest.com/ncaaec) [@ncaaec](https://www.threads.net/@ncaaec) [@ncaaec](https://www.youtube.com/ncaaec) [@ncaaec](https://www.tiktok.com/@ncaaec) [@ncaaec](https://www.snapchat.com/add/ncaaec) [@ncaaec](https://www.twitch.tv/ncaaec) [@ncaaec](https://www.linkedin.com/company/ncaa-eligibility-center) [@ncaaec](https://www.pinterest.com/ncaaec) [@ncaaec](https://www.threads.net/@ncaaec) [@ncaaec](https://www.youtube.com/ncaaec) [@ncaaec](https://www.tiktok.com/@ncaaec) [@ncaaec](https://www.snapchat.com/add/ncaaec) [@ncaaec](https://www.twitch.tv/ncaaec) [@ncaaec](https://www.linkedin.com/company/ncaa-eligibility-center) [@ncaaec](https://www.pinterest.com/ncaaec) [@ncaaec](https://www.threads.net/@ncaaec) [@ncaaec](https://www.youtube.com/ncaaec) [@ncaaec](https://www.tiktok.com/@ncaaec) [@ncaaec](https://www.snapchat.com/add/ncaaec) [@ncaaec](https://www.twitch.tv/ncaaec) [@ncaaec](https://www.linkedin.com/company/ncaa-eligibility-center) [@ncaaec](https://www.pinterest.com/ncaaec) [@ncaaec](https://www.threads.net/@ncaaec) [@ncaaec](https://www.youtube.com/ncaaec) [@ncaaec](https://www.tiktok.com/@ncaaec) [@ncaaec](https://www.snapchat.com/add/ncaaec) [@ncaaec](https://www.twitch.tv/ncaaec) [@ncaaec](https://www.linkedin.com/company/ncaa-eligibility-center) [@ncaaec](https://www.pinterest.com/ncaaec) [@ncaaec](https://www.threads.net/@ncaaec) [@ncaaec](https://www.youtube.com/ncaaec) [@ncaaec](https://www.tiktok.com/@ncaaec) [@ncaaec](https://www.snapchat.com/add/ncaaec) [@ncaaec](https://www.twitch.tv/ncaaec) [@ncaaec](https://www.linkedin.com/company/ncaa-eligibility-center) [@ncaaec](https://www.pinterest.com/ncaaec) [@ncaaec](https://www.threads.net/@ncaaec) [@ncaaec](https://www.youtube.com/ncaaec) [@ncaaec](https://www.tiktok.com/@ncaaec) [@ncaaec](https://www.snapchat.com/add/ncaaec) [@ncaaec](https://www.twitch.tv/ncaaec) [@ncaaec](https://www.linkedin.com/company/ncaa-eligibility-center) [@ncaaec](https://www.pinterest.com/ncaaec) [@ncaaec](https://www.threads.net/@ncaaec) [@ncaaec](https://www.youtube.com/ncaaec) [@ncaaec](https://www.tiktok.com/@ncaaec) [@ncaaec](https://www.snapchat.com/add/ncaaec) [@ncaaec](https://www.twitch.tv/ncaaec) [@ncaaec](https://www.linkedin.com/company/ncaa-eligibility-center) [@ncaaec](https://www.pinterest.com/ncaaec) [@ncaaec](https://www.threads.net/@ncaaec) [@ncaaec](https://www.youtube.com/ncaaec) [@ncaaec](https://www.tiktok.com/@ncaaec) [@ncaaec](https://www.snapchat.com/add/ncaaec) [@ncaaec](https://www.twitch.tv/ncaaec) [@ncaaec](https://www.linkedin.com/company/ncaa-eligibility-center) [@ncaaec](https://www.pinterest.com/ncaaec) [@ncaaec](https://www.threads.net/@ncaaec) [@ncaaec](https://www.youtube.com/ncaaec) [@ncaaec](https://www.tiktok.com/@ncaaec) [@ncaaec](https://www.snapchat.com/add/ncaaec) [@ncaaec](https://www.twitch.tv/ncaaec) [@ncaaec](https://www.linkedin.com/company/ncaa-eligibility-center) [@ncaaec](https://www.pinterest.com/ncaaec) [@ncaaec](https://www.threads.net/@ncaaec) [@ncaaec](https://www.youtube.com/ncaaec) [@ncaaec](https://www.tiktok.com/@ncaaec) [@ncaaec](https://www.snapchat.com/add/ncaaec) [@ncaaec](https://www.twitch.tv/ncaaec) [@ncaaec](https://www.linkedin.com/company/ncaa-eligibility-center) [@ncaaec](https://www.pinterest.com/ncaaec) [@ncaaec](https://www.threads.net/@ncaaec) [@ncaaec](https://www.youtube.com/ncaaec) [@ncaaec](https://www.tiktok.com/@ncaaec) [@ncaaec](https://www.snapchat.com/add/ncaaec) [@ncaaec](https://www.twitch.tv/ncaaec) [@ncaaec](https://www.linkedin.com/company/ncaa-eligibility-center) [@ncaaec](https://www.pinterest.com/ncaaec) [@ncaaec](https://www.threads.net/@ncaaec) [@ncaaec](https://www.youtube.com/ncaaec) [@ncaaec](https://www.tiktok.com/@ncaaec) [@ncaaec](https://www.snapchat.com/add/ncaaec) [@ncaaec](https://www.twitch.tv/ncaaec) [@ncaaec](https://www.linkedin.com/company/ncaa-eligibility-center) [@ncaaec](https://www.pinterest.com/ncaaec) [@ncaaec](https://www.threads.net/@ncaaec) [@ncaaec](https://www.youtube.com/ncaaec) [@ncaaec](https://www.tiktok.com/@ncaaec) [@ncaaec](https://www.snapchat.com/add/ncaaec) [@ncaaec](https://www.twitch.tv/ncaaec) [@ncaaec](https://www.linkedin.com/company/ncaa-eligibility-center) [@ncaaec](https://www.pinterest.com/ncaaec) [@ncaaec](https://www.threads.net/@ncaaec) [@ncaaec](https://www.youtube.com/ncaaec) [@ncaaec](https://www.tiktok.com/@ncaaec) [@ncaaec](https://www.snapchat.com/add/ncaaec) [@ncaaec](https://www.twitch.tv/ncaaec) [@ncaaec](https://www.linkedin.com/company/ncaa-eligibility-center) [@ncaaec](https://www.pinterest.com/ncaaec) [@ncaaec](https://www.threads.net/@ncaaec) <