



# Attendance



## W. A. PERRY MIDDLE SCHOOL



### TRUANCY

3 consecutive unexcused absences  
5 unexcused absences  
10+ unexcused absences will result in a petition.

### CHRONIC ABSENTEEISM

According to the United States Department of Education's Office of Civil Rights (OCR)/EdFacts, an absent student is one who misses 50 percent of the instructional day for any reason and regardless of whether the absence is excused or unexcused. In other words, students must attend class for at least half of the instructional day to be considered present for that day.

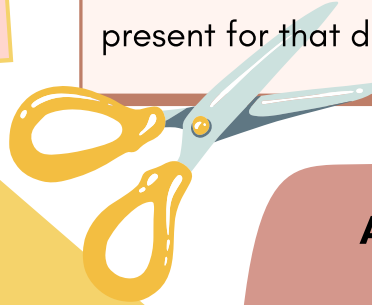
### CONTACT

#### Attendance Secretary

[lorraine.browner@richlandone.org](mailto:lorraine.browner@richlandone.org)

#### Social Worker

[diamante.myers@richlandone.org](mailto:diamante.myers@richlandone.org)



### A FEW NOTES

Our CA rate for 2024 was 50.9%.

School starts at 8:40am.

Repeated 1st block absences and early dismissals could result in petition being filed.

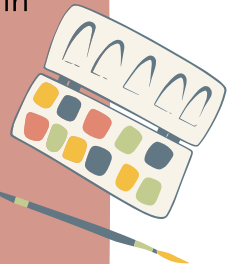
AIP - Attendance Intervention Plan created when students are truant.

8 Attendance Challenges scheduled for the school year. Incentives for students.



### EXCUSES

- 10 parent notes per school year
- Email excuses or complete online form
- Submit within 48 hours of absence



PLEASE COME TO SCHOOL!