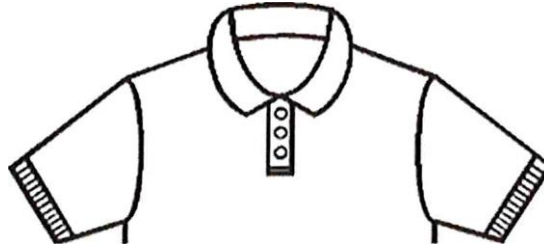


2025-2026 Standard Mode of Dress



*Polo Shirts are **REQUIRED!***

Monday - Wednesday	White, Grey, Black, or Purple
Thursday	College T-Shirt
Friday	School Spirit

Dress Expectations

- **Full Length** (Long) BLUE, BLACK, or **Khaki** pants or **Jeans ONLY NO RIPS, TEARS, or HOLES** **Tennis shoes or closed toe shoes only**

If students don't participate in College or Spirit Days, they must be in appropriate school attire.



Bring charged laptop daily.



ID Badges must be worn
A visible daily.

Clear & Mesh Backpacks ONLY!



Students are NOT allowed to enter your classroom without proper dress code, a clear or mesh backpack, ID badge, and their laptop. The Dress Code will begin on the 1st day of school, but students will not receive consequences until the 2nd week because we want to give all students an opportunity to fully understand the dress code. Teachers, will use day 1 to remind students about the dress code expectations when going over the course syllabus.

NOTE (EXCLUDED ITEMS) The following is a list of items that students are **NOT ALLOWED** to wear at any time while on campus; includes, but is not limited to:

- Leggings, jeggings, pajamas, jogging pants/sweats, athletic pants, shorts, and skirts.
- House shoes, mesh or see-thru slippers, flip flops, crocs, slides, open-toe, open-back shoes.
- Sleeveless shirts or T-shirts
- Head wear including hats, hair bonnets, scarves, wraps, doo rags and bandanas