

NEW FAMILY

2025-2026

HELLO



OUR MISSION

St. Anne-Pacelli Catholic School, through Catholic education, forms knowledgeable, faithful and responsible citizens who compassionately serve others.

Welcome to St. Anne-Pacelli Catholic School! Named for St. Anne, the mother of Mary, and Pope Pius XII, Eugenio Pacelli, our history stretches back to 1868. We are the only Preschool (age 1)-12th grade Catholic school serving southwestern Georgia.

Cognia accredits St. Anne-Pacelli. Our school is also a member of the National Catholic Education Association, the Georgia Independent Athletic Association and is administered within the framework of the Catholic Diocese of Savannah and operated by St. Anne Catholic Church.

St. Anne-Pacelli is proud to be recognized for academic excellence by the U.S. Department of Education as a 2023 National Blue Ribbon School.

We hope you find this guide to be a handy resource. We are excited you are a part of our Viking family and look forward to getting to know you!

Our office is open Monday-Friday, from 7:30 a.m. until 4 p.m. when school is in session. Summer office hours are Monday-Thursday, from 9 a.m. until 2 p.m.



2020 KAY CIRCLE
COLUMBUS, GA 31907



706-561-8232



WWW.BEAVIKING.COM



ADMINISTRATORS



Carolyn Brewster
High School
Principal



Heather Dalelio
Lower School
Principal



Lance Henderson
Lower School Assistant Principal



Katie Earnest
High School Assistant Principal

OFFICE STAFF



Jennifer Arceneaux
Main Office
Administrative Assistant



Shawntrel Seidel
Main Office
Receptionist/Clerk



Janet Mendez
High School Office
Guidance Secretary

HANDBOOK

We ask that you please take some time to read and review our school's handbook with your child(ren). The handbook for a new school year is typically posted by the end of June. To access the handbook:

- Visit BeAViking.com/quick-links/powerschool
- Log in to your PowerSchool Parent Account
- The handbook is housed in PowerSchool's School Bulletin section and posted for the coming school year in late-June
- For questions about PowerSchool parent log-in credentials, please email powerschool@sasphs.net.

Our school handbook covers many important topics, from arrival and dismissal procedures, to detailed guidelines for uniforms, shoes, accessories and grooming. Many families instantly feel more at ease after reading our handbook and familiarizing themselves with school procedures, policies and rules. Please take time to read the school handbook with your family!



Stay Connected!

There are so many ways to stay connected with St. Anne-Pacelli Catholic School! Please take advantage of these opportunities to stay in the know:

School Websites

- Visit BeAViking.com to learn all about St. Anne-Pacelli.
- Check out PacelliSports.org for details about our Viking Athletics program.

School Calendar

Visit BeAViking.com/calendar for a one-stop information shop for what's happening at our school.

- We offer a Main School Calendar that includes details about school holidays and all-school events, as well as a Lower School Calendar, Middle School Calendar, High School Calendar, Mass Calendar and an Athletics Calendar. You can filter and/or subscribe to the calendars that pertain to your family to find out about upcoming events.

School Apps

1. **St. Anne-Pacelli Catholic School App** - This app gives you quick access to information for our school community in one place! Download from the [App Store](#) or [Google Play](#).
2. **Pacelli Sports App** - This app includes team rosters, athletic physical forms, season schedules and more. Download from the [App Store](#) or [Google Play](#).
3. **PowerSchool Mobile App** - The PowerSchool Mobile App provides convenient access to real-time student information like grades, assignments, and attendance. Download from the [App Store](#) or [Google Play](#). After downloading the app, follow these instructions:

*Launch the app and enter our district code - BSBN - followed by your Parent Portal username and password.

*Make sure you turn on notifications in the app's Account tab so you will receive real time updates about your student's attendance and grades.

For questions about PowerSchool parent log-in credentials, please email please email powerschool@sasphs.net.

4. **Touch of SAGE App** - This app allows you to view lunch menus, create a custom allergen profile and provide feedback about menu items to our chef. Download from the [App Store](#) or [Google Play](#).
5. **Healthy Roster App** - Healthy Roster enables our athletic trainer to provide better care to our student-athletes. Download from the [App Store](#) or [Google Play](#).
6. **x2VOL App** - This app is used to track volunteer hours for high school students and families receiving tuition assistance. Download from the [App Store](#) or [here](#) for Android devices.

School Communications

You will receive information about everything from weather-related closures to interest meetings for extracurricular activities through our Messages XR system via phone (emergencies only), email or text. You can also subscribe to news on our website, BeAViking.com.

Social Media

Follow us on social media for the latest news, events, and a peek into daily life at our school.

- St. Anne-Pacelli Catholic School [Facebook](#) and [Instagram](#)
- Pacelli Sports [Facebook](#) and [Instagram](#)
- Viking Volunteers [Facebook](#)
- Once a Viking Alumni [Facebook](#) and [Instagram](#)
- [LinkedIn](#)

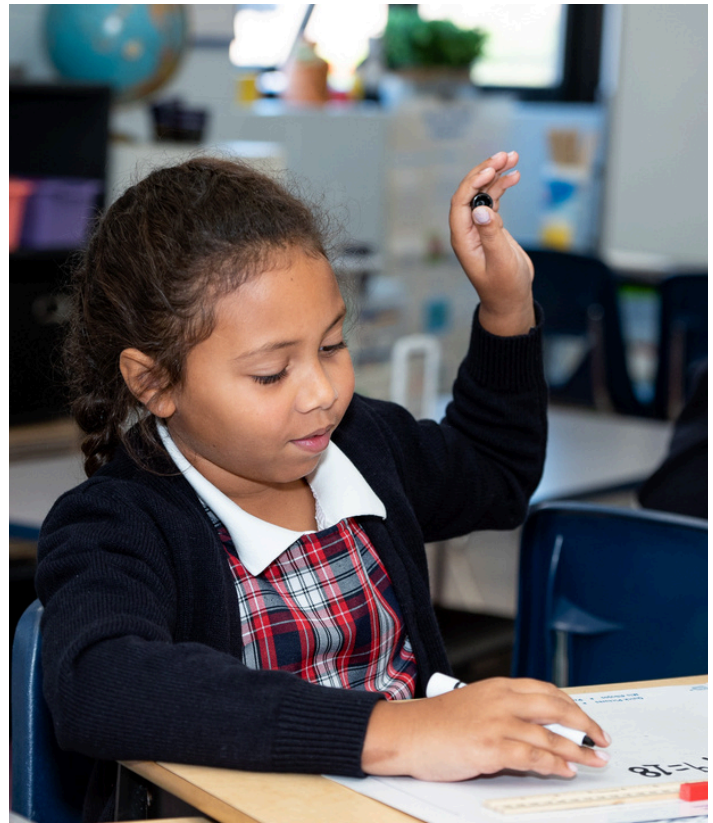
SCHOOL UNIFORMS

Students in PK4-12th grades are required to wear uniforms. Please refer to BeAViking.com/quick-links/uniforms for uniform styles and directions on how to shop for school uniforms as well as details about acceptable footwear.

For PE, students in Pre-K4-5th grades will wear non-marking athletic shoes and their regular school uniform. Girls will wear shorts under jumpers. Students in grades 6-12 taking PE classes will be required to wear our school's new PE uniform, sold exclusively by Lands' End.

Every Friday is a Spirit Day! On Spirit Days, students may wear official school spirit wear tops affiliated with school events, athletics, clubs, and activities, to include tops purchased from our Spirit Wear Shop found online at BeAViking.com/quick-links/spiritwear-shop. Spirit wear tops must be worn with uniform bottoms or blue jeans.

A Used Uniform Closet is available to all families. Volunteers conduct sales of gently-used uniforms several times each year. Donations may be dropped off at our main school office.



BE A VIKING VOLUNTEER!

At St. Anne-Pacelli Catholic School there are many ways for parents to get involved! Most of these opportunities come from one or both of our two main volunteer organizations: Home & School Association and Vikings Booster Club. To learn more about these organizations and volunteer opportunities, please visit BeAViking.com/quick-links/volunteer.

VIRTUS training outlines appropriate behavior when dealing with children, and is for the protection of both the adult volunteer and our students. VIRTUS training is required for all people who wish to volunteer at St. Anne-Pacelli Catholic School. To register for an upcoming VIRTUS training course, please visit BeAViking.com/quick-links/volunteer.

All parents are asked to log their volunteer hours. Instructions on how to do this can be found online at BeAViking.com/quick-links/volunteer. We love our Viking volunteers and want to be sure you are thanked for your service to our school! For more information about volunteering, please email Volunteer Director Megan Louck - mlouck@sasphs.net.

Carpool

Detailed information and maps regarding arrival and dismissal procedures will be communicated via email the week before school begins. Procedures will be reviewed at New Family Orientations prior to the start of school.

During "Meet the Teacher" each new Pre-K3-8th grade family will receive a carline tag stating your child's carline number to be displayed in your front window for carpool dismissal.

Additional car tags may be purchased online at BeAViking.com/student-life/back-to-school.

All Pre-K3-8th grade parents will be using our digital platform for dismissal procedures called PikMyKid. This program allows you to notify the school of pickup changes or authorize other family members to pick up students from school and manage carpool with other parents at school.

Mass

Students in Kindergarten-5th grade attend Mass every Thursday at 9:30 a.m. at St. Anne Church. Middle and high school students go to Mass every other Tuesday at 9:30 a.m. at St. Anne Church. Mass times are listed on our school's online calendar, BeAViking.com/quick-links/calendar, and our school's mobile app. Students must wear Church uniforms to all Masses.

Parents are welcome to attend our school Masses!

Where do I meet my child for Mass?

You can go straight to St. Anne Church to meet your student.

Do I sit with my student and his/her class?

You are welcome to sit with your student during Mass!

Safety Is Our #1 Concern

Safety is a top priority at St. Anne-Pacelli! We use the RaptorWare® system to screen campus visitors. This visitor management system searches sex offender databases in all 50 states. Raptor also screens for custom alerts designated by St. Anne-Pacelli Catholic School, such as restraining orders and custody issues.

Visitor Policies

1. Raptor sign-in will be required during school days, 7:30 a.m.-3 p.m., and other days and times as determined by the school.
2. All visitors must wear a visitor's badge while on campus.
3. All visitors who desire campus access for the first time must present a Driver's License.
4. The receptionist will scan the visitor's identification and issue a badge with the visitor's destination, assuming there is no alert indicated on the database.
5. The visitor will return to the main office to check out and return the visitor's badge before departing.

School Resource Officer

In an effort to create a superior security network for the safety of our students and staff, we have a full-time School Resource Officer (SRO). Officer Ray Gash assists administrators in maintaining a safe and secure environment for our students, faculty and staff. His duties combine policing with mentoring and education. Officer Gash will be armed and has the power to arrest and enforce the law.

Officer Gash earned a bachelor's degree in Criminal Justice with a minor in Psychology from Columbus State University. He brings nearly two decades of law enforcement experience, having served in a variety of roles with both the Richmond County and Muscogee County Sheriff's Offices. He most recently served as part of the Muscogee County School District Police Department.

Lunch

Established in 1990, SAGE is the leading food service provider for independent schools and colleges throughout North America. Tuition rates include daily lunch for grades Pre-K4 through 12. SAGE Dining Services provides our school community with a wide variety of delicious, dietitian approved, cooked from scratch meal choices with unlimited seconds.

All SAGE team members have extensive training in foodservice protocols and food allergy awareness.

Daily lunch menus will be accessible via BeAViking.com/quick-links/lunch-menu and will be posted on our school app, as well. SAGE also has its own app, "A Touch of SAGE," available in the App Store for iPhones or on Google Play for Android devices.

Preschool and Pre-K3 students are required to bring a lunch from home each school day.



Before & After School Care

St. Anne-Pacelli Catholic School's Extended Day Program is open to students in Pre-K3-8th grades. Early morning drop-off begins at 7:30 a.m. for no charge. After each day's school dismissal, the program is open until 6 p.m. Extended Day pickup is at Kay Circle.

The Extended Day Program's daily schedule includes: snacks; homework time; indoor activities; and recess.

Extended Day Program Rates

Registration Fee: \$40 per family

Monthly Charge: \$165 per student* (December is billed at \$100; no sibling discounts in December)

Daily Drop-In Rate:

- \$17/day. Drop-ins are limited to 4 days per month. Any student exceeding four days will be charged \$97 for day 5 and an additional \$17 for days 6-31.
- \$6/hour for student-athletes in grades 5-8 participating in an in-season sport; unlimited drop-ins

*\$25 monthly sibling discount for 2nd student and each additional student. Discount will not apply to the month of December. Questions? Email Extended Day Director Maggi Horton: mhorton@sasphs.net.

Extracurricular Activities

St. Anne-Pacelli students are encouraged to participate in extracurricular and co-curricular activities to enhance their school experience. Club meetings and activities take place before or after school or at lunch and are moderated by faculty members. Eligibility to participate varies depending on the activity. In addition to clubs and activities sponsored by the school, St. Anne-Pacelli students take part in various academic, service and leadership programs and competitions sponsored by community organizations. Find a list of extracurricular activities online at BeAViking.com/student-life/clubs.



VIKING ATHLETICS



Physical development is part of the mission of St. Anne-Pacelli Catholic School, and we are proud of our strong athletic program! Students are encouraged to participate and have an opportunity to play a sport in every season of the academic year. At the varsity level, St. Anne-Pacelli competes as a member of the Georgia Independent Athletic Association (GIAA). Parents will be notified about interest meetings for various sports via email. Students who participate in a sport must have an athletic physical on file with the school. Find more info online at PacelliSports.org. The following sports are offered:

- Baseball: grades 6-12
- Basketball: grades 5-12*
- Cheerleading: grades 6-12
- Cross Country: grades 5-12*
- Dance: grades 8-12
- eSports: grades 9-12*
- Flag Football: Grades 8-12
- Football: grades 6-12
- Golf: grades 5-12*
- Soccer: grades 5-12*
- Softball: grades 5-12
- Swimming: grades 5-12*
- Tennis: grades 3-12*
- Track and Field: grades 8-12*
- Volleyball: grades 6-12
- Wrestling: grades 5-12*

**Boys' and girls' can participate*

Tuition Payments

All billing is streamlined and processed through FACTS Tuition, including pay in full. Payment options are Pay In Full (by June 30, 2025) and Monthly.

If you sign up for the Pay In Full option, the FACTS annual fee will be waived. Monthly payments are processed from June (ahead of the academic year) through May (end of academic year). This will allow payments to process over 12 months.

After your student has applied, been accepted and is registered, you should register in FACTS, log in and set up 2025-2026 payment plans using the following link: <https://online.factsmgt.com/signin/3CDWI>. Please note that FACTS charges an \$50 annual account registration fee. If you elect to pay your tuition in full, that fee will be waived.

Registration in FACTS is the only option to receive a tuition invoice. In addition, FACTS will process Preschool and Extended Day under the same payment option you choose for Tuition. Sports fees and testing fee invoices will also be processed in FACTS; however, they will be done as they occur.

For a student to begin school in August, tuition must be paid in full or June and July tuition payments must be received.

OVER-THE-SUMMER TO-DOS



Final Verification

All families will be emailed instructions for verification. This process, which collects medical & emergency information, must be completed before a student can start school.



Summer Homework

Upcoming Pre-K4-12th grade students are required to complete summer homework. Summer homework assignments will be posted online by the beginning of June at BeAViking.com/student-life/summer-homework. They are due the first day of school.



School Supplies

When it comes to purchasing your child's school supplies, St. Anne-Pacelli Catholic School offers two options for parents: Purchase pre-packaged School Supply Packs for Pre-K3-8th grade students by June 15, or buy items individually. Find all school supply information at BeAViking.com/student-life/school-supplies.



Records

Be sure to turn in your student's Certificate of Immunization (Form #3231) and Eye, Ear and Dental Certificate (Form #3300 EED). To be enrolled, all certificates of immunization must be marked "Complete for Attendance" OR have a future expiration date. Waivers are not accepted. Copies of each student's birth certificate and social security card are also required to be kept on file. Catholic students must also provide copies of all sacrament certificates. Questions? Email sseidel@sasphs.net (Pre-K-8th grades) or jmendez@sasphs.net (grades 9-12).



Report Cards & Transcripts for New High School Students

By June 10th, incoming high school students need to request a copy of their final report card (9th graders) and transcript (10-12th graders) be emailed to High School Guidance Secretary Janet Mendez at jmendez@sasphs.net or faxed to 706-561-3243.



Back-to-School Notes

The first day of the 2025-2026 school year is Monday, August 4th and will be a full school day (8 a.m.-3 p.m.). For more information about orientations and Meet the Teacher, please visit BeAViking.com/student-life/back-to-school.



Advancing Our School

We have a long history of academic excellence at St. Anne-Pacelli Catholic School. Recent athletic achievements, fine arts merit, and the ongoing additions of a variety of clubs and organizations, continue to shine a spotlight on our school. For these reasons and many more, we think an investment in St. Anne-Pacelli is a wise decision! As tuition covers only 83% of the cost to educate a student, each year we seek support from current families, alumni, Grand Vikings (grandparents), parishioners, and community members to support our school through campus-wide fundraising initiatives. Below are listed the areas within our school in which you can lend your support.

- **The P Fund (Annual Fund – Unrestricted Gifts)**
- **GOAL, Adopt-A-Viking, and IPTID (Tuition Assistance)**
- **Scholarship Giving**
- **Legacy Giving**
- **Special Events**

We ask you to prayerfully consider at what level you can contribute to the continued growth of our Viking family. No gift is too great nor too small, and we strive for 100% of our school families to give in some capacity. Your investment equips our school with the ability to provide a campus where your students grow in wisdom and grace. Thank you for sharing your gifts!

For more information, contact our Advancement Office - advancement@sasphs.net.



How will I be made aware of my student's homeroom teacher or class schedule?

Lower School students in Pre-K3 through 5th grades will receive an email or phone call from their homeroom teachers by mid-July. Middle School students will receive their schedules during orientations, planned for early-August. Prior to summer break, parents of high school students will be emailed a list of their students' courses for the upcoming school year. The courses listed in the email will serve as a guide when completing summer homework assignments, found online at BeAViking.com/student-life/summer-homework.

What if my child leaves a book/supplies in school after dismissal?

If a child remembers prior to the front office closing, he/she may ask to retrieve the item and will ONLY be allowed to do so if accompanied by school personnel. Please do not simply ask your child to "run back"—children may not roam the halls unattended.

For birthdays, what is an acceptable treat to send in for my child's class?

Birthdays are so special! If parents wish to honor a child, a treat may be sent that can be given to the entire class during recess or lunch. We encourage healthy treats when possible. No candles are allowed. An alternate suggestion is to donate a book to the classroom or school library in honor of the child's special day. Parents are discouraged from sending gifts, flowers or balloons to the school during the school day. In grades Pre-K3 through 5, teachers will communicate how birthdays will be celebrated in each homeroom. Students may hand out party invitations at school as long as every student in the homeroom class is invited. If the party is for a girl and only girls are invited then all the girls from the homeroom must be invited for the invitations to be passed out at school (same goes for boys'-only parties). If not everyone is invited to the party then invitations must be sent via the mail, email, etc. but may not be done at school.

What is the rain dismissal policy?

If it is raining only, we will have normal dismissal. If there is lightning, dismissal may be delayed until deemed safe. Parents will be notified of any dismissal delays via our phone/text/email message notification system. We follow the Muscogee County School District's decisions when it comes to weather-related delays and closures.

If my child is sick, who should I notify and how?

When a student is absent due to illness, upon returning to school a note from the parent must accompany the student. Failure to provide a written excuse will be documented as an unexcused absence. If a student is absent for three consecutive days, a doctor's note must accompany the student upon return to school.

Are there guidelines for backpacks?

Rolling backpacks are not allowed.



If I have to take my child out of school early for an appointment, who should I notify?

Leaving school early for any reason is highly discouraged during the school day. Each time a student leaves early he/she misses valuable instruction and interrupts instruction for other students. If a student must be checked out before 12:30 p.m., he/she is considered absent for that day. Likewise, if he/she arrives after 10:30 a.m., he/she is counted absent for that day (OCCA 20.2.690 (6) (3) requires 4.5 hrs. per day). Five early departures equal one absence. **In order for the main office staff and teachers to focus on getting each student home safely, we strongly discourage checkouts after 2:30 p.m.**

Students may only be signed out from the main school office by a parent, legal guardian, or with a signed note from the student's parent or guardian. Phone calls are discouraged and acceptable only in emergency situations. Please make dismissal arrangements in advance so that we may protect both the safety of your child and time on task.

Students who are absent from school or are checked out early may not participate in a practice or a game on the day of the absence.

What if my child takes a daily medication or I want to have as-needed medication during a particular time period?

Students who must have medications at school or at any school-sponsored activity shall file a form with the school signed by the prescribing physician and parents or guardians. Medication forms can be found online at BeAViking.com/student-life/back-to-school.

Medication must be sent to the school in the original packaged bottle, clearly marked and identified with student name and dosage. Medication must be kept secured in the school office or health room, and dispensed only from and in the school office or health room by a responsible adult.

A record of all medication dispensed is maintained in the school office. This record will include the signature of the student or office/health room personnel.

Inhalers and/or Epi-pens, in their prescribed containers, are permitted to be carried by students on their person. Non-Emergency injections shall only be administered by appropriately licensed persons unless the Parent and physician of the child sign a written authorization for the child to self-administer the injection.

The St. Anne-Pacelli staff is prohibited from providing or administering any medication, including aspirin, to any student except as authorized and supplied by the parent/guardian in accordance with the guidelines outlined in our school handbook.

In an emergency situation, how will the school communicate with parents?

The school will contact parents in three ways: a phone call, email and text. It is imperative that you have working email addresses in PowerSchool as well as correct home and mobile phone numbers. In order to update your contact information, please email Director of Information Technology Russ Lenig: rlenig@sasphs.net.

What if I have a change of carpool plans during the day or I am running late for pick up?

All Pre-K3-8th grade parents will use our digital platform for dismissal procedures called PikMyKid. This program allows you to notify the school of pickup changes or authorize other family members to pick up students from school and manage carpool with other parents at school.

What if I am running late, where do my children go?

At 3:15 p.m., students in grades PreK-3 through 8 who are not picked up will be taken to our Extended Day Enrichment Program. They will be well taken care of by our staff. Daily fees will be assessed. Students will be given a snack during Extended Day.

What if my high school class lists a due date for summer homework, but I registered right at or after this date?

Though many of the high school summer homework deadlines are the first day of school, some of the upper level courses have earlier dates to pace the students. Those deadlines listed are for current students or students who registered prior to the start of the summer, and are not meant to hinder those students who are just joining our Viking family. Our teachers are understanding of students who enroll in our school throughout the summer and these deadlines will not count against them. We recommend a student in this situation contact the teacher in question via email to communicate their situation and work out an appropriate deadline with the teacher.



Important Points of Contact

Billing - Ext. 308/ksnodgrass@sasphs.net

High School Office - Ext. 336/jmendez@sasphs.net

Athletics - cthomas@sasphs.net

Extended Day - mhorton@sasphs.net

SAGE Dining Services - sagedining@sasphs.net



Campus Map



2020 Kay Circle
Columbus, GA 31907
706-561-8232
BeAViking.com



The Beck Center
for Academic
and Athletic
Success