

San Mateo County Board of Education Trustee Map Redrawing Process

Niambi Clay, Secretary

County Committee on School District Organization (CCSDO)

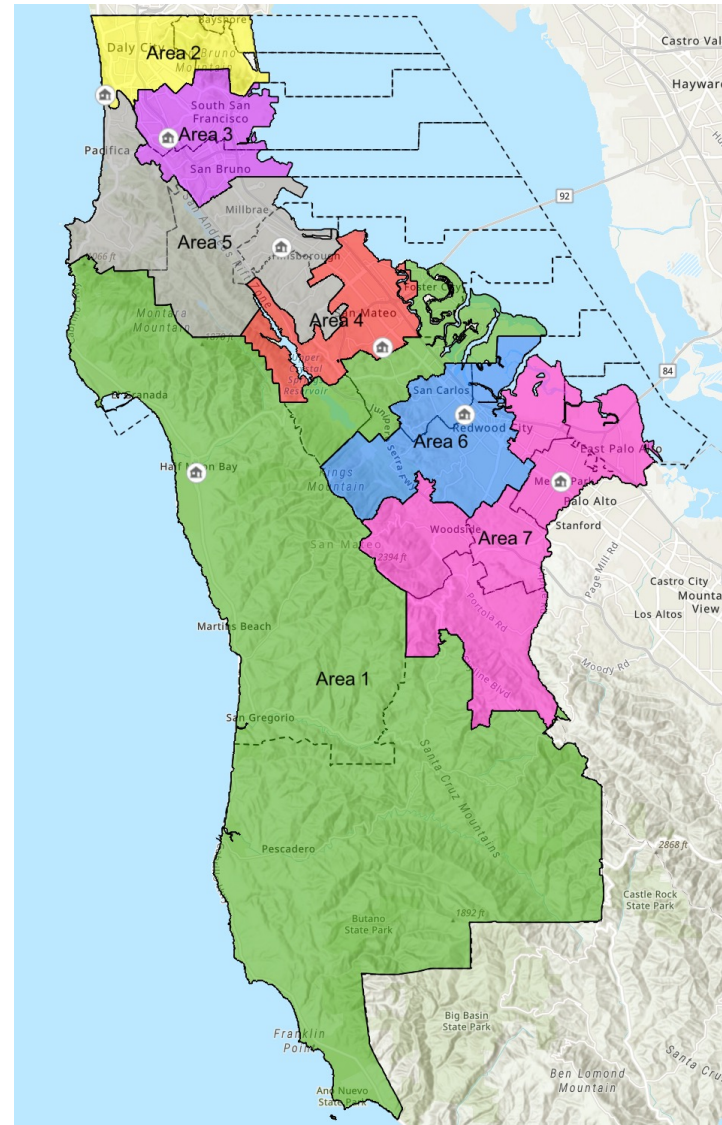
March 7, 2022



Proposed Map for Adoption

[Link to Trustee Map](#)

Trustee Area	Population	Deviation from Ideal	% Deviation from Ideal
Area 1	108,423	772	0.7%
Area 2	105,322	3,873	3.5%
Area 3	120,091	10,896	10.0%
Area 4	106,684	2,511	2.3%
Area 5	108,327	868	0.8%
Area 6	106,816	2,379	2.2%
Area 7	108,704	491	0.4%
County Total	764,367	Ideal population for each Trustee Area is 109,195 (1/7 of the Total)	



Trustee Map Review Timeline

Meeting	Date
CCSDO Regular Meeting - SMCOE Trustee Maps process introduced	Nov 1, 2021
Trustee Maps Subcommittee Meeting 1	Nov 15, 2021
Trustee Maps Subcommittee Meeting 2	Dec 2, 2021
CCSDO Regular Meeting - SMCOE Trustee Areas discussion	Dec 6, 2021
CCSDO Regular Meeting & Public Hearing	Jan 10, 2022
SMC Board of Education – CCSDO Update	Jan 19, 2022
CCSDO Regular Meeting & Public Hearing	Feb 7, 2022
Trustee Maps Subcommittee Meeting 3	Feb 11, 2022
Trustee Maps Subcommittee Meeting 4	Feb 25, 2022
SMC Board of Education – CCSDO Update	Mar 2, 2022
CCSDO Regular Meeting – possible map approval	Mar 7, 2022
Shapefiles due to the Registration & Elections Division	Apr 1, 2022

CCSDO Map Subcommittee: Bill Lock; Dennis McBride; Hilary Paulson; Lynne Esselstein; Melchior Thompson

Trustee Map Review Process

SAN MATEO COUNTY BOARD OF EDUCATION

Trustee Area 1

- Belmont-Redwood Shores
- Cabrillo
- La Honda-Pescadero
- Sequoia Union (shared with Areas 6 and 7)

Trustee Area 2

- Bayshore
- Brisbane
- Jefferson Elementary
- Jefferson Union
- Pacifica

Trustee Area 3

- San Bruno Park
- San Mateo Union (shared with Areas 4 and 5)
- South San Francisco

Trustee Area 4

- San Mateo-Foster City
- San Mateo Union (shared with Areas 3 and 5)

Trustee Area 5

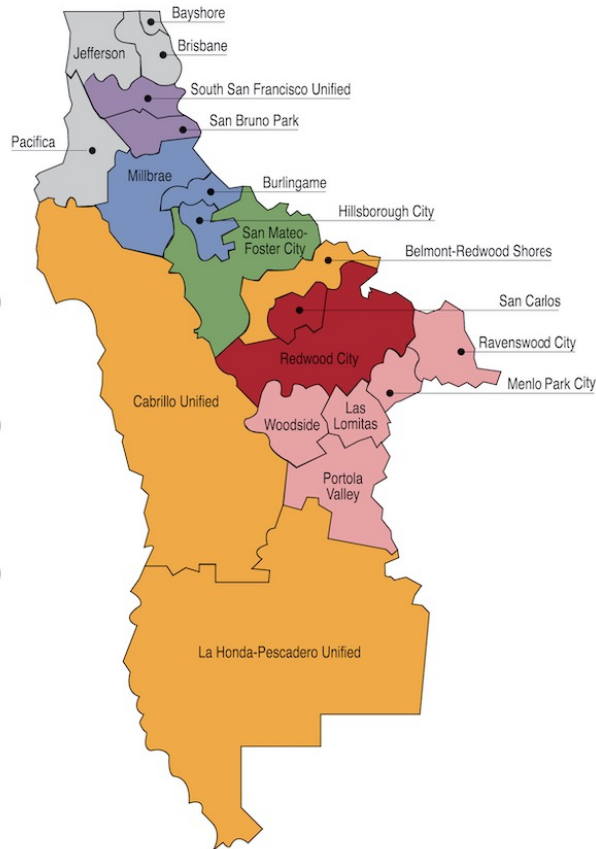
- Burlingame
- Hillsborough
- Millbrae
- San Mateo Union (shared with Areas 3 and 4)

Trustee Area 6

- Redwood City
- San Carlos
- Sequoia Union (shared with Areas 1 and 7)

Trustee Area 7

- Las Lomitas
- Menlo Park
- Portola Valley
- Ravenswood
- Sequoia Union (shared with Areas 1 and 6)
- Woodside



Current Trustee Areas
(Communities of Interest)



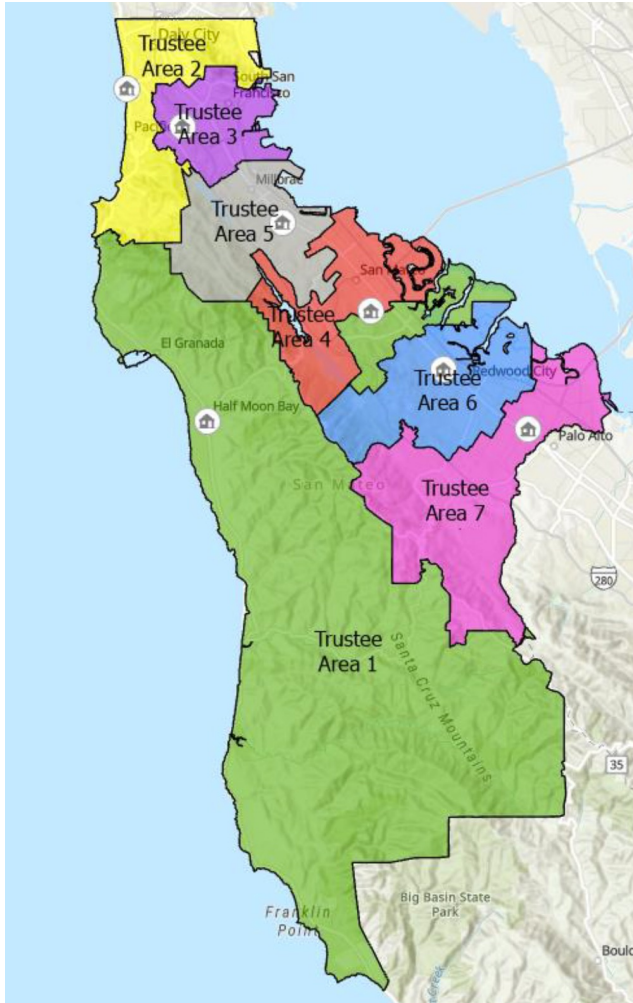
Adjust cities,
districts & neighborhoods
(Balance the Population)



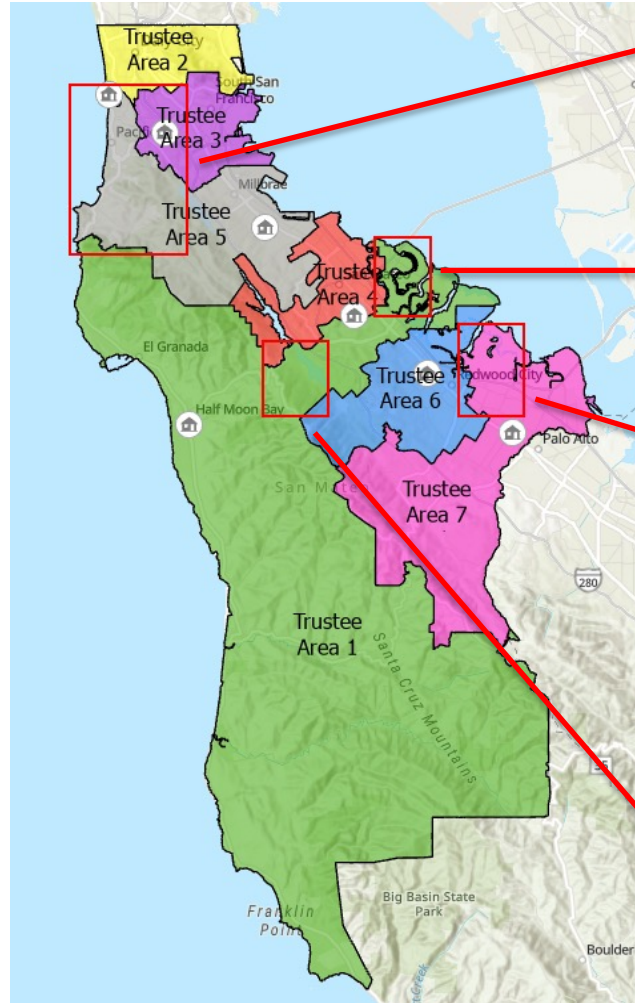
Adjust census blocks
(Contiguous Areas)

Current and Adjusted Maps

Current Trustee Areas



Adjusted Trustee Areas



Adjustments

- Moved Pacifica School District from Area 2 to Area 5.

- Moved Foster City from Area 4 to Area 1.

- Moved North Fair Oaks neighborhood and area north of U.S. Highway 101 (all the way to the water) from Area 6 to Area 7.

- Moved area near Upper Crystal Springs Reservoir from Area 4 to Area 1.

Process Review


Goal:

Equitable SMC Board of Education Trustee representation

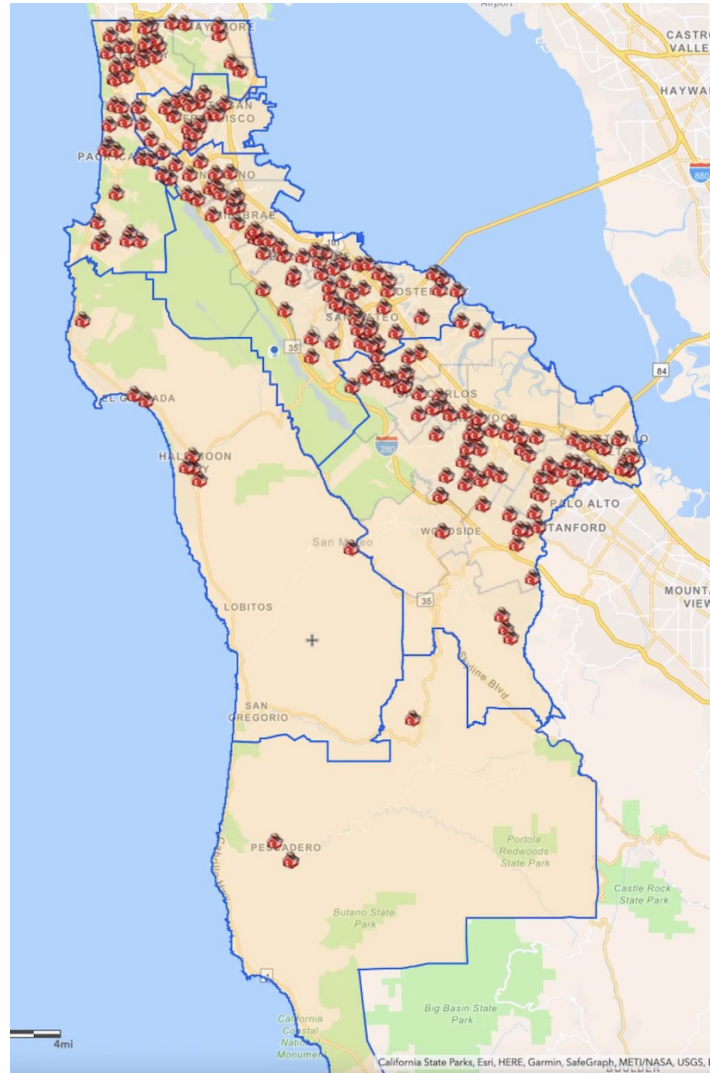
During this process, multiple maps/ideas were considered.

- Submitted directly to the CCSDO
- Expressed during public comment
- All versions had to address the County's lopsided, low density, geographic population distribution in District 1; all iterations result in majority non-coast side resident representation

The current map was chosen, in part, because this iteration:

- Has equitable trustee representation (within 10% threshold)
 - Disrupts the fewest school districts
 - Maintains clear city boundaries
 - Respects communities of interest
- 

San Mateo County School Density



Thank you!
Questions?



**SAN MATEO
COUNTY
OFFICE OF
EDUCATION**

www.smcoe.org