

# STEM SCHOOL 2025 - 2026 COMMUNICATION AVENUES

HIGHLANDS RANCH

Our Communication Avenues are designed to give you quick access to the information you need. Please always start by reviewing the Always Available Resources Avenue (blue). If you still need more information, you may move into the other Avenues (gray) moving to direct digital or phone contact (yellow), and finally to personal interaction (orange).

## ALWAYS AVAILABLE RESOURCES

WEBSITE & CALENDARS | **UPDATED LINKS AVAILABLE MID-JULY 2025** | DEMIC PLANNING GUIDE

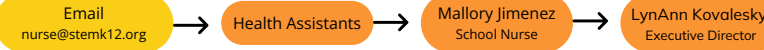
### GENERAL INFORMATION

Volunteering, donations, about STEM, etc.



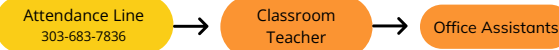
### HEALTH

Student health, records, vision and hearing, documentation, etc.



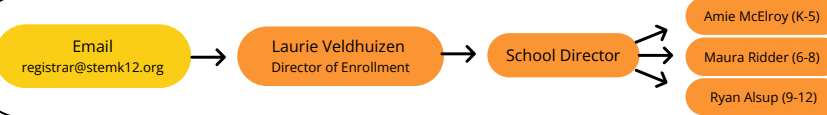
### ATTENDANCE

Attendance procedures, corrections, etc.



### ENROLLMENT

Current and future enrollment & records requests



### FACILITY & OPERATIONS

Safety, operations, grounds & maintenance, transportation management, etc.



### MENTAL HEALTH CONCERNS

Student mental health and/or safety concerns



### STEM EVENTS



# STEM SCHOOL 2025 - 2026 COMMUNICATION AVENUES

HIGHLANDS RANCH

Our Communication Avenues are designed to give you quick access to the information you need. Please always start by reviewing the Always Available Resources Avenue (blue). If you still need more information, you may move into the other Avenues (gray) moving to direct digital or phone contact (yellow), and finally to personal interaction (orange).

## ENRICHMENT & AFTER SCHOOL

Enrichment programs & Secondary After School Care



## STUDENT CULTURE

Interactions between students in and out of the classroom, including concerns with bullying



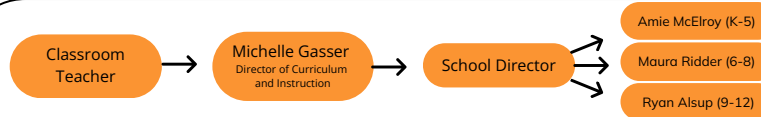
## STUDENT SUPPORT

Social work, MTSS, RTI, 504s, IEPs, ALPs



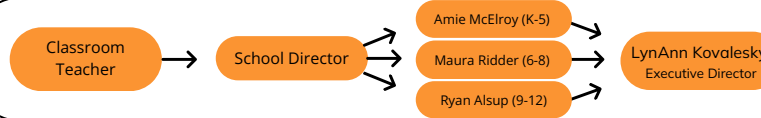
## CURRICULUM

Curriculum philosophy & instructional resources



## CLASSROOM POLICIES

Classroom procedure clarification



## STANDARDIZED TESTING

iREADY, CMAS, AP, PSAT, SAT



## SECONDARY ATHLETICS

Sports/Activities/Events



## SECONDARY SCHOOL ACADEMICS

Counseling, college & career planning, career discovery and concurrent enrollment

