



## Dodge County Sheriff's Department 2011 Annual Report



Deputy Chad Enright  
K-9 Paige



Deputy Gib Fairman  
K-9 Ziva

Dedicated to the  
Dodge County Sheriff's Department  
K-9 TEAMS

To the Honorable Board of Supervisors:

Please find the 2011 annual report of the Dodge County Sheriff's Department. This report is far from a report of all the accomplishments of the fine men and woman of the department, but serves as a snapshot of yet another year of tremendous effort by the 200 members of this great organization. This is my ninth annual report to you and I am as proud of this one as I was the first, which I presented to you in 2003.

Overall, we continue to grow as a department, not necessarily in size but in scope and performance. The end of 2011 brought closure to the careers of many of our senior managers and as we bid them a great retirement, we welcomed a new group of managers who have been prepared and readied for positions of greater responsibility. As I have stated repeatedly, over the years we have built a deep bench within our ranks and though we will miss those who left, we are very excited about the new group of middle managers/supervisors.

Our Patrol Division repeated its successes of 2010 in 2011 with the county experiencing just nine traffic fatalities for the second year in a row. This seasoned division continues to excel, understanding the difference their efforts make in the overall scheme of things. Now, under the leadership of Captain Trace Frost, their efforts in 2012 will include backfilling the force with new young professionals and the reorganization of the division's management.

Your Dodge County Detention Facility is the largest division representing over 100 employees, yet executes a vital mission for the county with little fanfare or recognition. Often under appreciated, the DCDF averaged 450 inmates daily with 300 of them being federal boarders which generated \$10 million in federal revenues for the county. Subject to immense pressure and countless inspections/regulation, this fine team is doing what other counties would like to replicate but no other county in the state can.

Emergencies are constant within the county and the determined and dedicated E911 operators have successfully taken and dispatched those calls with great proficiency. In 2003 our average response time to an emergency was over twelve minutes, in 2005 we reduced that to eleven, today we are just over five minutes. We are proud of that success and the teamwork which makes it happen, starting with our dispatchers.

The economy and new technologies continue to provide the "bad guys" with new ways of stealing, defrauding, and menacing the citizens of the county. Our Criminal Investigation Division has worked hard to stay one step ahead of the bad guys and provides an impressive array of skills which has led to many arrests and conviction of those who feel they would never be apprehended. Though small in size, this band of investigators accomplishes big stuff.

Not to be forgotten is our administrative team who work hard each day, keeping everything together, responding to each employee's needs without complaint - the unsung heroes of the daily operations. Another couple of groups which deserve mention include the Dodge County Posse and DCERT, two volunteer organizations who have provided endless support and countless hours to the county at no cost to the taxpayers.

Thank you for all your support over the years and your continued efforts in the years ahead.



Sheriff Todd M. Nehls

# **Dodge County Law Enforcement Explorer Post #9903**



## **PROGRAM DESCRIPTION**

The Explorer Post is a program aimed at the youth of our community. It is sponsored by all of the Dodge County law enforcement agencies and reaches out to youth who are looking at law enforcement as a career choice. It is open to high school and college students who are age 14-21.

The Explorer Post in its fourth year has again had a successful year. The program has graduated four of its original Explorers who began in February, 2008 when the post was founded. There were a total of 23 Explorers in the program this year.

## **PROGRAM SUCCESS STORY**

The Explorer Post has had another one of its Explorers hired as a law enforcement officer. Explorer Sharon Bauch was hired by the Winneconne Police Department and the Theresa Police Department as a part-time police officer. Sharon is one of our original Explorers. She has held the ranks of lieutenant and sergeant while a member of the post and has been a strong leader during her time in the program. Sharon is the third Dodge County Law Enforcement Explorer to be hired by a law enforcement agency as a police officer.



## **COMPETITION SUCCESS**

The Explorer Post competed in three different competitions this year. They attended the Hartford Police Exploring Competition, the Waukesha County Exploring Competition and the Dane County Deputy Sheriff's Association Competition. Our Explorer Post brought home the following awards:

1st Place – Response to an Active Business Alarm

1st Place – Crime Scene Investigation

- 2<sup>nd</sup> Place – Crime Scene Investigation
- 3<sup>rd</sup> Place – Shoot/Don't Shoot
- 3<sup>rd</sup> Place – Tactical Response to a School Shooting

These awards are displayed in the sheriff's department lobby

### **2011 EXPLORER OF THE YEAR**

This year's Explorer of the Year Award was given to Explorer Captain Dustin Waas of Mayville. This is the second year in a row that Captain Waas has been given this award. The award is given to the most exemplary Explorer for that particular year. Captain Waas showed excellent leadership and dedication in his duties. He was also recognized for perfect attendance at all of this year's meetings and events. He has logged over 140 hours riding along with deputies of the sheriff's department and will be an excellent addition to any law enforcement agency he chooses to work for. Captain Waas will also receive a \$200 scholarship which is part of the Explorer of the Year Award.



### **ROOKIE OF THE YEAR**

2011 marks the first year that the Explorer Post has recognized one of its newest members. The Explorer Post feels that it is necessary to reward those who work hard and are dedicated to the Explorer Post. In an effort to continue this practice we developed the Rookie of the Year Award. This year's recipient joined in early 2011. She has already shown leadership skills and was elected by her peers to the command staff position of Sergeant. Congratulations to Sgt. Haley Justmann of Juneau, 2011 Rookie of the Year.



## **2011 EVENTS**

Below is a list of community service projects which the Explorer Post participated in during 2011:

- 2011 Dodge County Fair – parking lot patrol
- 2011 Waupun Truck n Show – parking security
- Halloween Trick or Treat Patrol – Juneau
- Alcohol compliance checks w/ sheriff's department
- Training events w/ sheriff's department
- 100th Anniversary John Deere Parade – traffic control

## **NEW ADVISOR**

Deputy Chad Haase has joined the Explorer Post as an advisor. He is the sixth advisor that the post has had. He takes the place of Deputy Joseph Nicholas who chose to step down from the position. Deputy Haase is a 6 year veteran of the Patrol Division and started his career as a Correctional Officer at the Dodge County Detention Facility.

**Dodge County Sheriff's Department**  
**Patrol Division**  
**2011**

**Captain Molly Soblewski**

**1<sup>st</sup> Shift**

Lt. Trace Frost  
Sgt. Steve Allermann  
Sgt. Jim Ketchem  
Deputy Dale Kreitzman  
Deputy Greg Weihert  
Deputy Steve Moul  
Deputy Scott Ziorgen  
Deputy Kevin Harvancik  
Deputy Ted Sullivan  
Deputy Mike Morell  
Deputy Kevin Homan  
Deputy Jason Westphal

**2<sup>nd</sup> Shift**

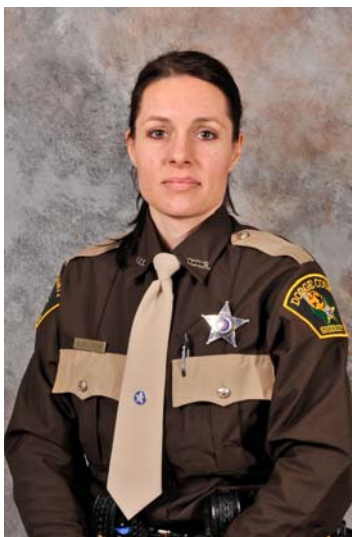
Lt. Doug Ninmann  
Sgt. Dennis Walston  
Sgt. Brian Loos  
Deputy Eric Krueger  
Deputy Scott Petrack  
Deputy Mike Matoushek  
Deputy John Monaghan  
Deputy Gib Fairman  
Deputy Pete Mantai  
Deputy Don Counard  
Deputy Chad Enright  
Deputy Andy Rolfs  
Deputy Michael Willmann  
Deputy Robbie Weinfurter  
Deputy Jaime Buelter

**3<sup>rd</sup> Shift**

Lt. Tony Brugger  
Sgt. Dave Weninger  
Deputy Dean Hopp  
Deputy Randy Kramer  
Deputy Andy Krumholz  
Deputy Dale Schmidt  
Deputy Ryan Schwartz  
Deputy Joe Nicholas  
Deputy Jason Boeck  
Deputy CJ Micale  
Deputy Jermey Wolfe

## 2011 Patrol Division

**New Employee:** One new employee was hired in 2011. On December 15, 2011, Deputy Jaime Buelter started with the patrol division. Deputy Buelter previously worked in the communications division for 14 years and had attained the rank of Communications Sergeant. Deputy Buelter has completed the field training program and is assigned to the second shift. Deputy Buelter lives in the town of Hubbard with her husband Mark and their two sons, Taylor and Andrew.



**Interdiction:** Over the course of 2010 a formal Drug Interdiction Team was established and continued to be active in 2011. Dodge County Sheriff's Department members teamed up with the Wisconsin State Patrol during many of the eleven deployments. In 2011 members of the Dodge County Sheriff's Department worked a total of 301 hours focused on detection of vehicles used in drug trafficking in Dodge County. During the interdiction a total of 535 warnings and 171 citations for various traffic violations were issued. There were 21 drug related arrests made during the interdiction.

**K9:** In 2010 a committee was established to study the feasibility of adding K9 Teams to the patrol division of the sheriff's department. The committee spent months gathering information and identified a clear need for K9 Teams within the department. Members of the committee were Kevin Day, Trace Frost, Gib Fairman, Eric Krueger, Mike Garbalagtys, Chad Haase and Molly Soblewski.

In the spring of 2011, two K9 Teams were approved by the County Board. During the summer of 2011, two black labrador retrievers were located that were excellent candidates for K9 training. Paige was acquired from River Velvet Retrievers from Horicon. Ziva was obtained from the Dodge County Humane Society. Deputies Chad Enright and Gilbert Fairman were chosen to be their handlers. Training began August, 2011 and consisted of over 160 hours of obedience, odor identification, scent theory, first aid, caselaw, tracking, dog behavior and patrol procedures. Retired K9 officer Jean Frost who is a Master Trainer for the North American Police Work Dog Association conducted the training. Certification of both teams occurred in narcotics detection and tracking in early October. They began patrolling soon after.

Both K9 teams have been very active in their first few months. K9 Deputy Enright and his partner Paige assisted Sgt. Loos during a traffic stop on December 26, 2011 that resulted in the largest single drug



seizure from a vehicle in Dodge County. The seizure of over 39 pounds of high grade marijuana has a street value of over \$160,000.

K9 Deputy Enright and his partner Paige and K9 Deputy Fairman and his partner Ziva have both been involved in successful tracks and searches. Both teams have been doing an outstanding job very early in their K9 careers. We expect this valuable asset to continue to provide a critical service to the citizens of Dodge County.



**Fatal Accidents:** Dodge County had nine fatalities from traffic crashes in 2011 which tied 2010 for the lowest number of fatalities in over 60 years. It is hard to pinpoint the reason but I believe contributing factors include increased patrol, aggressive investigation of accidents, steeper penalties and sentences, along with public education. Our Crash Investigation Team has done an outstanding job recreating accident scenes and determining causes. Members of the team include Sgt. Dennis Walston, Deputy Kevin Homan, Deputy Ted Sullivan, Deputy Andy Rolfs and Deputy John Monaghan.

**Honor Guard.** Members of the Honor Guard continued to be active this year. They participated in 6 events ranging from presenting the colors at civic functions to providing casket watch at law enforcement funerals. The Honor Guard has joined with other counties in forming the Wisconsin Honor Guard Association. Members of our Honor Guard are Deputy Kevin Harvancik, Deputy Scott Ziorgen, Sgt. Brian Loos, Sgt. Jim Ketchem, Communications Officer Cheryl Kotek, Deputy Ted Sullivan, Corrections Officer Kevin Schultz, Deputy Eric Krueger, Deputy Gib Fairman, Deputy Mike Willmann, Lt. Scott Smith and Deputy CJ Micale.

There will be many changes in the patrol division in 2012. We will have retirements, promotions and several newly hired deputies. Please feel free to contact me if you have any questions or concerns regarding the patrol division.

Sincerely,

Captain Trace Frost



## Patrol Division 2011 Statistics

### CITATIONS

	<u>2007</u>	<u>2008</u>	<u>2009</u>	<u>2010</u>	<u>2011</u>
OWI	347	296	303	284	257
1 <sup>st</sup> offense	---	---	---	162	144
2 <sup>nd</sup> offense	---	---	---	52	51
3 <sup>rd</sup> offense	---	---	---	36	26
4 <sup>th</sup> offense	---	---	---	14	23
5 <sup>th</sup> offense	---	---	--	11	7
6 <sup>th</sup> offense	---	---	---	6	4
7 <sup>th</sup> offense	---	---	---	2	1
8 <sup>th</sup> offense	---	---	---	1	1
Underage Drinking	213	164	190	53	17
One Chance	---	---	---	73	103
Speeding	2460	4834	4432	5643	4890
Safety Belt	384	398	357	667	392
Fail to Obey Signal	119	117	49	98	157
OAS	271	273	254	329	355
OAR	148	229	197	232	188
Too Fast for Conditions	152	252	171	153	81
Warnings Issued		4588	4969	7551	6222

### DRE EVALUATIONS

	<u>2009</u>	<u>2010</u>	<u>2011</u>
Hours	56	77	61
Evaluations	17	18	24
On Duty	15	15	9
Off Shift	2	3	15
Assist Other Agency	2	1	8

## ACCIDENTS

	<u>2007</u>	<u>2008</u>	<u>2009</u>	<u>2010</u>	<u>2011</u>
Bus	2	6	4	0	0
Deer	370	331	306	288	276
Fatal Crashes	14	16	16	9	9
Farm Equipment	8	3	11	4	5
Motorcycle	23	22	14	19	18
Property Damage Only	483	410	307	320	300
Pedestrian	1	4	5	2	0
Personal Injury	<u>255</u>	<u>221</u>	<u>196</u>	<u>192</u>	<u>180</u>
<b>TOTAL</b>	<b>1170</b>	<b>1013</b>	<b>859</b>	<b>834</b>	<b>788</b>

## CRASH INVESTIGATION TEAM

	<u>2007</u>	<u>2008</u>	<u>2009</u>	<u>2010</u>	<u>2011</u>
County Crashes	24	27	22	27	26
Hours on Scene	162	155	141	254	183
Follow up Hours	284	387	498	526	767
Assist Other	16	8	13	18	13
Other Hours	129	88	186	276	296
<b>Charges/Citations</b>					
OWI Homicide	3	1	1	1	1
Other Felony	14	11	17	12	25
Misdemeanor	3	17	13	14	17
County Ordinance	14	17	4	41	36
<b>Public Speaking</b>					
Public Education	11	8	6	8	5
Attendees	315	275	204	234	213
Hours	91	72	56	77	61

## **TRUCK INSPECTIONS**

<b><u>YEAR</u></b>	<b><u>Inspections</u></b>	<b><u>Citations</u></b>	<b><u>Fines</u></b>	<b><u>Warnings</u></b>
2010	68	36	\$9,748	355
2011	76	38	\$7,415	248

## **COMMUNITY PROGRAM PARTICIPANTS**

	<b><u>2009</u></b>	<b><u>2010</u></b>	<b><u>2011</u></b>
Safety	154	225	155
Fatal Vision	271	305	340
Miscellaneous	<u>170</u>	<u>87</u>	<u>100</u>
<b>Total</b>	<b>595</b>	<b>617</b>	<b>595</b>

## **TRANSPORT**

	<b><u>2008</u></b>	<b><u>2009</u></b>	<b><u>2010</u></b>	<b><u>2011</u></b>
Juveniles				
Trips	111	101	52	51
Hours	320	276	167	171
Mileage	10654	10564	5336	5657
Adults				
Trips	804	783	785	637
Hours	1817	2491	2571	1815
Mileage	84801	84344	82716	71826

## **K-9 UNIT**

Total Number of sniffs/searches	142
Total Arrests	9
Total value of drugs seized	\$162,172

### **BOAT PATROL**

	<b><u>2007</u></b>	<b><u>2008</u></b>	<b><u>2009</u></b>	<b><u>2010</u></b>	<b><u>2011</u></b>
Hours	442	494	744	769	890
Registration Violation	9	1	37	61	57
OWI	1	2	0	0	2
Flotation Device	6	7	15	21	26
Lights	0	6	3	9	12
Other	13	23	53	45	106
Weekday Hours			193	199	114
Weekend Hours			551	570	770

### **ATV PATROL**

	<b><u>2007</u></b>	<b><u>2008</u></b>	<b><u>2009</u></b>	<b><u>2010</u></b>	<b><u>2011</u></b>
Hours	55	126	129	166	110
Registration Violation	5	2	19	4	7
OWI/PAC	1	1	2	4	3
Highway Operation	5	5	22	18	18
Helmet Violation	2	2	7	1	1
Other	5	5	16	17	16
Weekday Hours			28	82	50
Weekend Hours			101	84	60

### **SNOWMOBILE PATROL**

	<b><u>2007</u></b>	<b><u>2008</u></b>	<b><u>2009</u></b>	<b><u>2010</u></b>	<b><u>2011</u></b>
Hours	154	284	192	369	431
Registration Violation	10	8	12	23	22
OWI	3	2	1	6	3
Trespass	12	3	5	9	4
Obey Sign	1	3	5	10	19
Other	2	14	24	24	28
Weekday Hours			43	155	207
Weekend Hours			149	214	223

### **CIVIL PROCESS**

	<b><u>2008</u></b>	<b><u>2009</u></b>	<b><u>2010</u></b>	<b><u>2011</u></b>
Total Papers Served	5,574	6,175	5,001	3,028
Served for Dodge Cty. Agencies	71	79	60	67
Prison Papers Served	73	75	81	70
Revenue to Dodge Cty.	\$121,017	\$113,748	\$126,074	\$105,307
Total Charges for Dodge Cty. Papers	\$3,658.80	\$3,493.40	\$2,597.00	\$2953.40

### **SHERIFF SALES**

	<b><u>2008</u></b>	<b><u>2009</u></b>	<b><u>2010</u></b>	<b><u>2011</u></b>
Total Sales	201	206	246	253
Total \$ Amt	\$27,552,618	\$24,167,487	\$30,669,386	\$30,712,084

### **COURT ORDERED WRITS SERVED**

	<b><u>2007</u></b>	<b><u>2008</u></b>	<b><u>2009</u></b>	<b><u>2010</u></b>	<b><u>2011</u></b>
<b>Writs of Executions</b>					
Executions Handled	30	40	30	28	26
<b>Writs of Assistance</b>					
Writs Handled	40	70	90	180	210
<b>Writs of Restitution</b>					
Writs Handled	210	260	280	320	410
<b>Writs of Replevin</b>					
Writs Handled	80	85	65	94	80
<b>Writs of Capias</b>					
Writs Handled	0	0	0	0	0

**TOTAL PAPERS SERVED 2011** **3,755**

# Dodge County Posse

## WORK HOUR REPORT

	<u>2009</u>	<u>2010</u>	<u>2011</u>
Office Projects	239	420	482
Special Assignments	520	910	450
Patrol	1066	1554	1655
Maintenance/Errands	<u>257</u>	<u>293</u>	<u>292</u>
<b>TOTAL</b>	<b>2082</b>	<b>3177</b>	<b>2879</b>

**OFFICE PROJECTS:** Scanning, mail, general office/meetings

**SPECIAL ASSIGNMENTS:** Special duty, training, interviews, set-up

**PATROL:** PD mail, house checks, radar, traffic control, country patrol, Huber

**MAINTENANCE/ERRANDS:** Squad shuttle, maintenance and errands

### **POSSE MEMBERS:**

George Birkel	CJ Breselow	Ed Bruesch	Josh Cox
Bob Embertson	Jim Firehammer	Jeff Giese	Carl Guse
Kyle Herman	Don Hillard	Heidi Hoover	Doug Jones
Don Lueptow	Dennis Noncek	Dan Rabideau	Bob Rose
Jill Strieff	Joel Vessey	Teresa Voight	John Wallace
Joyce Witczak	Wayne Wreath	Lindy Galvin	Diana Trapp
Dick Trapp	Sharon Chmielewski		



## Court Security Activity

Other agencies continue to contact the sheriff's department regarding our policies and procedures as they relate to security matters at the justice facility. These continued requests to us for information are an indication that Dodge County continues to be the example on how to design, implement and maintain a safe environment for those who access and work in the courthouse setting.

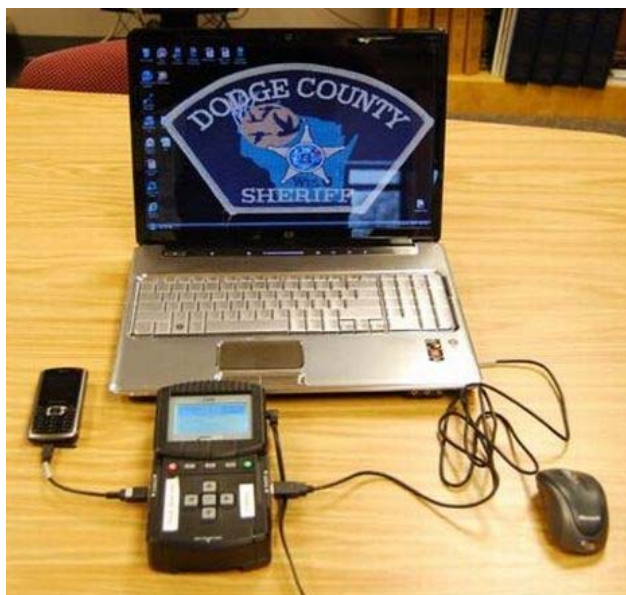
Court security officers screened 49,485 visitors who entered the justice facility in 2011.

In 2011 there was a significant increase in disturbances reported in the justice facility. Court security officers are proactive and attend proceedings that are of a sensitive nature or that have the potential of being emotionally charged. Examples of the proceedings are temporary restraining order hearings, juvenile hearings and plea and sentencing hearings. We feel this presence is a calming influence and prevents disturbances before they occur.

**Part-time court security staff in 2011:** Dave Beal, Kelly Cotter, Larry Huettl, Mark Jahnke and Amy Yahnke.

### COURT SECURITY ACTIVITY

	<u>2007</u>	<u>2008</u>	<u>2009</u>	<u>2010</u>	<u>2011</u>
<b><u>ARRESTS</u></b>					
Disturbances	0	2	0	0	0
Miscellaneous	0	2	4	0	0
Warrants	<u>49</u>	<u>63</u>	<u>74</u>	<u>34</u>	<u>37</u>
<b>TOTAL</b>	<b>49</b>	<b>67</b>	<b>78</b>	<b>34</b>	<b>37</b>
<b><u>DISTURBANCES</u></b>					
Clerk of Courts	0	0	2	3	4
Courtrooms	11	10	6	6	36
Family Court	0	0	0	0	1
Other areas	<u>3</u>	<u>5</u>	<u>8</u>	<u>6</u>	<u>14</u>
<b>TOTAL</b>	<b>14</b>	<b>15</b>	<b>16</b>	<b>15</b>	<b>55</b>
<b><u>MISCELLANEOUS</u></b>					
Paper Service	1	11	15	6	4
Subjects/Custody	45	63	91	120	63
Special Requests	139	179	263	201	223
Contraband	1	0	0	0	0
Weapons	<u>0</u>	<u>2</u>	<u>1</u>	<u>0</u>	<u>0</u>
<b>TOTAL</b>	<b>186</b>	<b>255</b>	<b>370</b>	<b>327</b>	<b>290</b>



## **Criminal Investigation Division Drug Task Force Evidence Unit**

**Lt. Kevin Hill - Supervisor**

### **GENERAL INVESTIGATIONS**

**Det. Vickie Brugger  
Det. Kevin Day  
Det. Brian Drumm  
Det. Robert Neuman  
Det. Michael Reissmann  
Det. Daniel Stiemsma**

### **DRUG TASK FORCE**

**Det. Brian Prieve  
Deputy Chad Haase  
Deputy Jeff Meyer**

In 2011 the Criminal Investigation Division conducted 428 criminal investigations and 154 prison investigations. Dodge County experienced a significant drop in violent crimes in 2011 while property crimes remained close to the average of the last five years.

### **CURRENT TRENDS**

Burglary, theft and scrap metal crimes continue to consume a considerable amount of investigative time. These types of crimes can be difficult to solve due to many factors. Pawn shops increase the ability to turn stolen items into cash. Most scrap metal items are generally items that are not easily identified as far as proof of ownership. Many theft or burglary victims do not have good records, i.e., photos, serial numbers, etc. to help identify items if recovered. As most property crimes seem to be random opportunity type crimes, suspects are difficult to identify.

Another area we are seeing an increase in criminal activity is the use of computers and cellular phones. Computers, cell phones and the Internet play a significant role in our day to day activities. As such, it

has become the new medium for criminal activity, including computer fraud, identity theft and sexual oriented offenses.

The detective division has identified several initiatives for 2012 to increase our ability to combat these types of crimes. The division recently received an upgrade to the Cell Brite technology that allows investigators to retrieve current and deleted information from cell phones. Detectives are seeking out and attending training opportunities in the use of social media to assist in investigating crimes. The division will work with pawn shops and scrap metal buyers to build a cooperative relationship to benefit all.

The sheriff has budgeted funds in 2012 dedicated to upgrading and purchasing surveillance electronics to allow more options for investigating and preventing of burglary and theft crimes. Detectives are currently researching and testing different options to assure the best equipment for our needs is identified.

The Criminal Investigations Division will continue to monitor trends in crime to be prepared and proactive in our response to investigate and solve reported crimes occurring within Dodge County.

## **DRUG TASK FORCE**

The Dodge County Drug Task Force which consists of several Dodge County law enforcement agencies working together to share intelligence, combat drug use and educate the community continued to show a positive impact in 2011.

119 arrests  
15 search warrants  
\$25,700 in asset forfeitures

Prescription drugs, heroin and marijuana continue to be the most prevalent drugs the task force is dealing with. This past year the drug investigators completed several larger scale marijuana cases where high grade marijuana is being shipped to our area from the west coast. Indoor and outdoor marijuana grow operations appear to have stabilized and appear to be mostly local individuals cultivating a small number of plants. We also recognize that prescription drug abuse continues to be a problem. We continue to maintain contacts with hospitals and pharmacies in an effort to share information on types of drugs being abused and how people are getting access to them. Cocaine is still available in the area but not as common as years past. The task force is involved in many community organizations and is committed to assist in educating the public on drug abuse issues.

The drug task force also recognizes that many other crimes are committed through the drug nexus. Task force members work closely with the detectives to assist each other in investigations involving burglary, theft and other crimes that could be connected with the drug scene.

The Dodge County Drug Task Force is committed to working with all agencies within the county and surrounding areas to continue to develop informants, make buys and conduct search warrants in an effort to dismantle and disrupt drug trafficking and abuse within Dodge County.

## **5 YEAR CRIME TOTAL**

	<b><u>2007</u></b>	<b><u>2008</u></b>	<b><u>2009</u></b>	<b><u>2010</u></b>	<b><u>2011</u></b>
<b>Violent Crimes Total</b>	36	43	33	25	14
Murder	1	1	0	0	0
Forcible Rape	4	2	5	6	1
Robbery	0	1	0	2	0
Aggravated Assault	31	39	28	17	13
 <b>Property Crimes Total</b>	 269	 266	 242	 234	 226
Burglary	73	81	73	72	67
Theft	177	160	152	148	149
Motor Vehicle Theft	16	22	12	13	2
Arson	3	3	5	1	2

## **CLEARANCE RATES 2011**

<b><u>Type of Crime</u></b>	<b><u>Number</u></b>	<b><u>Solved</u></b>	<b><u>Percentage</u></b>	
Murder	0	0	N/A	
Forcible Rape	1	1	100%	
Robbery	0	0	N/A	57% Violent Crime Clearance
Aggravated Assault	13	7	54%	
Total Violent Crimes	14	8		
 Simple Assault	 74	 68	 91%	
 Burglary	 67	 17	 25%	
Theft	149	32	21%	24% Property Crime Clearance
MV Theft	8	3	38%	
Arson	2	2	100%	
Total Property Crimes	226	54		

## **CLEARANCE RATES 2010**

<b><u>Type of Crime</u></b>	<b><u>Number</u></b>	<b><u>Solved</u></b>	<b><u>Percentage</u></b>	
Murder	0	0	N/A	
Forcible Rape	6	3	50%	72% Violent Crime Clearance
Robbery	2	1	50%	
Aggravated Assault	17	14	82%	
Total Violent Crimes	25	18		
Burglary	72	5	6%	
Theft	148	13	8%	8% Property Crime Clearance
Motor Vehicle Theft	13	1	7%	
Arson	1	0	0	
Total Property Crimes	234	19		

NOTE: Effective 4/2010, we updated our procedure to follow state/FBI guidelines of not clearing crime until the suspect is physically arrested or summoned into court and booked. Prior, when we requested charges through the DA, the subject was listed as arrested which cleared the crime. The state requested all agencies follow the FBI guidelines.

This will have an impact on the clearance rate as we need to wait for the suspect being summoned into court and booked or arrested on a warrant.

## **CLEARANCE RATES 2009**

<b><u>Type of Crime</u></b>	<b><u>Number</u></b>	<b><u>Solved</u></b>	<b><u>Percentage</u></b>	
Murder	0	0	N/A	94% Violent Crime Clearance
Forcible Rape	5	5	100%	
Robbery	0	0	N/A	
Aggravated Assault	28	26	93%	
Total Violent Crimes	33	31		
Burglary	73	19	26%	24% Property Crime Clearance
Theft	152	30	20%	
MV Theft	12	3	25%	
Arson	5	4	80%	
Total Property Crimes	242	56		

## **Dodge County Sheriff's Department Administrative Support Personnel**

Administrative support personnel are a team of Deputy Secretaries performing many crucial roles at the Dodge County Sheriff's Department. The tasks they focus on each day are numerous. Their work supports all who work here, from the sheriff to the least senior deputy or communications officer. They also serve as our crucial link, in many respects, to other county agencies, the courts and the public. Each deputy secretary fills a critical role through their primary duties and also works closely and cooperatively with each other. They fill in and assume duties of other deputy secretaries as needed. Their individual job descriptions include many tasks. What is not listed are the things too numerous to list that each do, every working day, that make everyone else's job easier. So, for all they do we recognize their daily efforts, professionalism and dedication to the Dodge County Sheriff's Department and the public we serve.

### **NANCY BASOL – Criminal Secretary**

Transcription and processing of non-traffic incidents including requests for charges to the district attorney's office and juvenile referrals. Primary deputy secretary for the Criminal Investigation Division and also for prison complaints. Reports crime statistics to the State of Wisconsin. Scans documents.

### **DIANE DAHL – Criminal Secretary**

Transcription and processing of drug/metro complaints. Reports crime statistics to the State of Wisconsin, performs accounts receivable/payable duties, deposits to treasurer, tracking purchase orders, scanning of documents, Special Notice management, management of department forms, contact person for various vendors and correspondence and phones for the sheriff and chief deputy.

### **DEBBIE KAUL – Civil Process Secretary**

Process open records requests including accident reports and background checks along with associated invoicing and logging of information, processing papers for service including temporary restraining orders/injunctions, summons and complaints and sheriff's sales. Primary contact at the main reception desk.



**DEBBIE WERNER-LINDERT – Traffic Secretary**

Processing citations, warnings, accident reports, traffic dictations, court information and maintain a list for officer court appearances. Assist the public with traffic questions and court information. Maintain all records and retention of traffic information. The “go to” for the patrol captain and assists the public at the lower level reception window at the sheriff’s department. Debbie finished out 2011 with us and opted to retire. We wish her good health and happiness in her new endeavors!

**KATHY VERGENZ – Evidence/Training Secretary**

Completion of training reservations, notification and registration, update training files and employee training records, assist lieutenant in charge of department training and processing new hire employees. Maintains the department’s training room and schedule. Orders supplies for the evidence room, processes photos, logs, purges, maintains and returns evidence per evidence room policy, assists with maintenance of the storage of evidence and transports evidence to the crime lab. Assists the other department evidence technicians and evidence manager as needed.

**SHAWN ROGERS – Criminal/Traffic Secretary**

Works 12:30 p.m. to 8:30 p.m. and is the person at the main reception desk after regular office hours. Transcription and processing of complaints, enter field contact information, maintain and distribute sheriff’s department policies, quarterly department newsletter (The LENS), update portions of the sheriff’s department website, assist Civil Process Secretary and Traffic Secretary as necessary.

# DODGE COUNTY EMERGENCY RESPONSE TEAM

[www.dcert.org](http://www.dcert.org)

## 2011 ANNUAL REPORT

The Dodge County Emergency Response Team is pleased to present our annual report for 2011.

### The Numbers

	<u>2011</u>	<u>2010</u>	<u>2009</u>	<u>2008</u>	<u>2007</u>
Total incidents and events responded to:	122	140	85	67	52
Scheduled events:	46	59	45	32	27
Law enforcement callouts/assists:	76	81	40	35	25
Total volunteer hours worked:	2101	1757	1692	888	471
Members:	32	31	29	20	20

### Officers 2011

President Paul Fink	920-382-5100
Vice President Bob Rose	920-517-7406
Secretary Lee Ann Heiden	920-344-7281
Treasurer Carl Guse	920-210-4455

### Officers 2012

President Paul Fink	920-382-5100
Vice President Devin Sellnow	920-904-2237
Secretary Lee Ann Heiden	920-344-7281
Treasurer Carl Guse	920-210-4455

We are grateful for the monetary and equipment donations received from the Dodge County Sheriff's Department., Dodge County Fair Association, Beaver Dam Lake Days, Dodge County Antique Power Club, Juneau Police Department., Iron Ridge Fire Department., John Deere, Mayville Audubon Days, Theresa Fire Department, Wal-Mart and the YMCA. The donations received have allowed team members to be equipped with safety, warning and communications equipment.

Respectfully submitted,  
Carl Guse, 2011 Treasurer

### Our Mission

Providing assistance to public safety agencies and community events for the safety and security of the community.

### Our Vision

The reason for DCERT's existence is to provide a service to the community through the use of our time, talents and capabilities.

# 2011 Central Communications and Support Staff

## STAFFING

Newhire Holly Buchda began as Communications Officer. Holly is a welcome addition and served as tele-communicator previously for Beaver Dam Police Department.

Communications Sergeant Jaime Buelter reclassified to Patrol Division – Deputy. Jaime began as Communications Officer in 1997.

Deputy Secretary (Traffic) Debra Werner retired after 24 years of service.

## Future:

In 2012 we will fill three vacant Communication Officer positions and one vacant Deputy Secretary position. A proposal is pending to reclassify one vacant Communication Officer position to Communications Sergeant.

## PLANNING:

Emergency Response Preparedness was addressed by reformat of the **Critical Incident Dispatch** (C.I.D.) Team. This group will work closely with Emergency Management (local and state level) to insure our center is prepared for critical incidents and disasters.

**Mutual Aid Box Alarm System** (MABAS) was refined and initiated as a protocol used for major fire incidents. It provides coordinated mutual aid and command and control for major fire emergencies, natural disasters and man-made catastrophes.

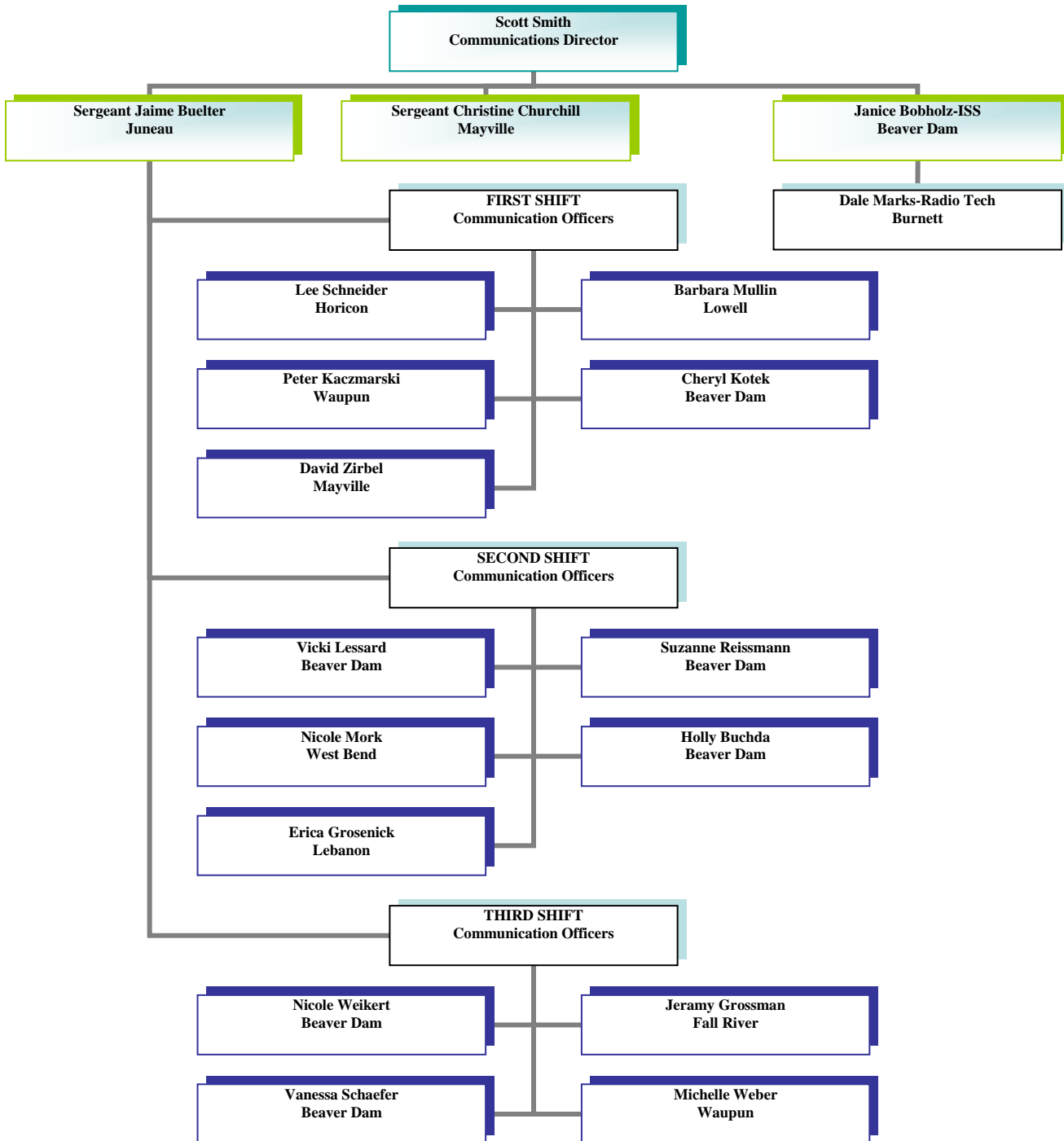
## Future:

We will strive to develop and improve our emergency response preparedness for major, critical incident events. We will improve our current procedures and training. We will participate in interoperability exercises locally and at the state level.



# Dodge County Sheriff's Department

## 911 Communications Center



## UNIT CALLS FOR SERVICE 2011

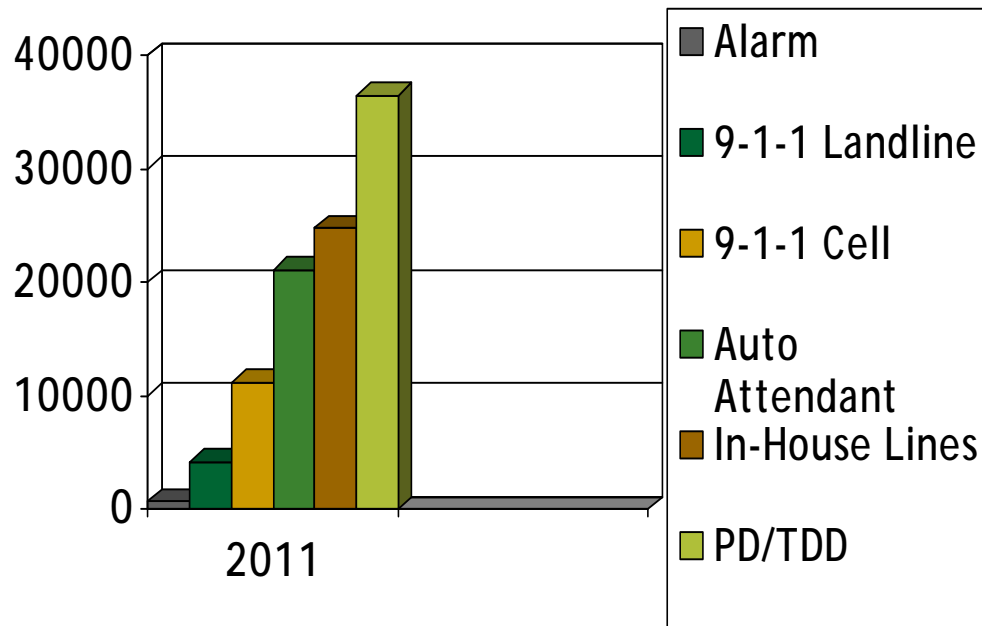
Dodge County Sheriff	36,183
(21) Police Departments	49,575
(28) Fire Departments	935
(30) EMS/First Responder Units	6,958
Fire/EMS Combined	<u>774</u>
<b>TOTAL Unit Calls</b>	<b>94,425</b>
<b>TOTAL Agencies</b>	<b>79</b>



---

# 2011 Incoming Phone Calls

■ TOTAL: 98,497



9-1-1 Landline	4,173
9-1-1 Cell	11,170
Auto Attendant	21,157
In-House Lines	24,766
Alarm	721
PD/TDD	36,510

---



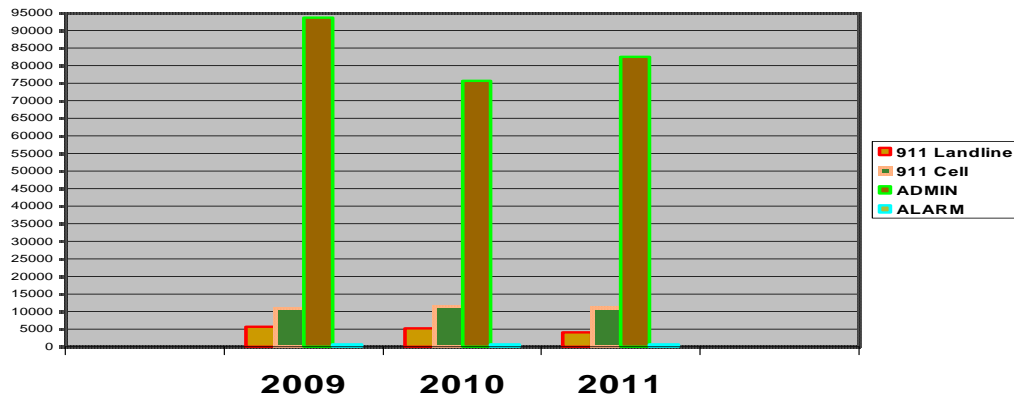
### **3 YEAR COMPARABLE**

	<b><u>2009</u></b>	<b><u>2011</u></b>
Sheriff's Department	40,438	36,183
Police Departments	51,567	49,575
Fire Departments and EMS Combined Dispatch	1,021	1,709
EMS/Fire Responder Units	3,045	6,598



## 3 YR. COMPARABLE INCOMING CALLS: 2009 - 2011

	<u>2009</u>	<u>2010</u>	<u>2011</u>
911 Landline	5,730	5,211	4,173
911 Cellular	10,840	11,673	11,170
Admin/Non-Emergency	93,620	75,692	82,433
Alarm	578	749	721



## WARRANT ACTIVITY

### 2007 – 2011 Comparison

<u>YEAR</u>	<u>WARRANTS ENTERED</u>	<u>WARRANTS CANCELLED</u>
2007	1,189	1,246
2008	1,099	1,272
2009	970	1,180
2010	654	848
2011	772	829



# Dodge County Detention Facility



**ADMINISTRATION:** Rodney Kreitzman Detention Facility Administrator, Thomas Polsin Deputy Administrator, Patricia Ninmann Deputy Administrator

**DEPUTY SECRETARIES:** Annette Duckett, Arla Folbrecht, Pamela Grosskopf

**SUPERVISORS:** Mark Born, Aaron Ellis, Rick Gempeler, Jason Hundt, Samantha Laughlin, Jason Polsin, Chad Riter, Mark Schwartz, Dawn Smack

**CORPORALS:** Arthur Elsner, Michael Harmsen, Marcus Kirchoff, Robert Kucharski, Gwyn Meyer, Kyle Opetz, Brenda Pieper, Aaron Potratz, Benjamin Schepp, Linda Thieme

**PROGRAMS OFFICERS:** Scott Buckner, Matt Marvin, Chris Myers, Jeffrey Schlegel, Jay Westhuis

**FIRST SHIFT OFFICERS:** Jodi Apel, Sandra Arneson, Donald Davidson, David Gabel, Michael Garbalagtys, Mark Goetsch, David Gorst, Peggy Kramer, Stacy Hasenstab, Kevin Kluck, Curtis Knoll, Nicole Krentz, Donald Krueger, Clint Leidolf, Clara Marx, Hannelore Mueller, Michele Pieper, Michele Reinwald, Carla Schultz, Karla Schultz, Kevin Schultz, Kristin Marwitz, Daniel Watkins, Melissa Watkins

**SECOND SHIFT OFFICERS:** Carole Baker, Bryan Beaudry, Dustin Beck, Stephanie Chavez, Paul Coopman, Laurie Covington, Denise Donegon, Brian Harkins, Philip Hraban, Ryan Jackson, Debra Keel, Bradley Knoll, Brian Koch, Ryan Martin, William Miller, Dale Oestreich, Duane Olbinski, David Owens, Rachel Parish, James Rhode, Stacy Ronge, Lana Stelter, Joseph Vukovich, Kendelle Wendlandt, David Zabel, Rose Zangl

**THIRD SHIFT OFFICERS:** Charles Borchardt, Matt Bublitz, David Churchill, Jodi Coda, Jerome Doornek, David Hagen, Bruce Harned, Nicholas Hraban, Mark Ketter, Marcus Kirchoff, Justin Kontny, William Miller, Daniel Mullin, Darrel Schlieuwe, Anna Schmidt, Jennifer Welch, Jacob Westenmeyer, Kasey Young, Lisa Zuelsdorf, Sandra Zuelsdorf

## **RODNEY KREITZMAN**

### **Detention Facility Administrator**

The detention facility generally had a good year in 2011. The facility remained very busy with 6,912 bookings, the most in the history of the facility. After calculating preliminary revenues and expenses for the main facility and the Huber facility, no costs were assessed against the levy to run the entire jail.

**Cashier Kiosk:** A cashier kiosk was installed in the main lobby of the jail to allow visitors and Huber inmates to deposit cash directly into inmate accounts. As a result transactions occur faster and without having to access the receptionist.

**Training:** In keeping with a progressive approach to more hands on and scenario based training we instituted several training “firsts” for the facility. The annual fire training for the facility was held outside. Officers had two minutes to correctly put on a self contained breathing apparatus (SCBA), and then carry a fire extinguisher 40 yards. Each officer was individually timed.



In another training first, the detention facility’s Corrections Emergency Response Team (CERT) trained with the sheriff’s department SWAT team and with the Emergency Response Unit (ERU) from Dodge Correctional Institution. The training event was held in several locations within the detention facility. Three different hostage training scenarios were held in varying parts of the facility. A debriefing and critique of the scenarios was held at the end of the training.

**Looking Ahead:** We have several projects earmarked for the facility in 2012. The first is to place a facility-wide kiosk system into service. This will allow inmates to order commissary directly from their housing unit without having to fill out forms which are then tallied by one of the secretaries. Inmates can also access their account balances without having to fill out a written request and without having to go through an officer to find out their balances.

The second project is the installation of additional cameras in the kitchen area of the jail. We have had several incidents and security issues in the kitchen. The additional cameras will provide us with views we currently do not have. All of the cameras will be tied into the facility’s recording system. A monitor will also be added to the kitchen office area so the kitchen contract staff will be able to continue to monitor kitchen activities when they are in the office.



The third project involves the addition of a “pulper” to the kitchen sanitation operation. We will be installing the old pulper previously used at Clearview. We will be able to reduce the amount of solids going into the city sewer system as well as certain levels of bio chemical oxygen demands (BODs). The city has set levels for BODs leaving the facility and if the levels exceed that amount, the city has and will fine the county.

**Personnel:** Several significant personnel changes took place in 2011. Supervisor Dawn Smack retired July 2<sup>nd</sup> after serving the county for approximately 25 ½ years, 23 in the corrections division. Corporal Mike Harmsen retired December 29<sup>th</sup> after serving the county for just over 40 years, all in the corrections division.

Samantha Laughlin was promoted to Supervisor. Supervisor Laughlin has been with the division for 6 years, holds a bachelor’s degree in criminal justice and a master’s degree in security management. Marcus Kirchoff was promoted to Corporal. Corporal Kirchoff has been with the division for 10 years.



Supervisor Samantha Laughlin



Corporal Marcus Kirchoff

Two new corrections officer were hired to fill vacancies in 2011.



Charles Borchardt



Kendelle Wendlandt

## **BOOKING TRENDS**

<b>TRENDS</b>	<b>2007</b>	<b>2008</b>	<b>2009</b>	<b>2010</b>	<b>2011</b>	<b>% Change</b>
Male	5,476	5,987	6,037	6,180	6,290	2%
Female	756	792	771	634	622	-2%
<b>TOTAL</b>	<b>6,232</b>	<b>6,779</b>	<b>6,808</b>	<b>6,814</b>	<b>6,912</b>	<b>1%</b>

<b>TYPE</b>	<b>2007</b>	<b>2008</b>	<b>2009</b>	<b>2010</b>	<b>2011</b>	<b>% Change</b>
City	69	51	45	51	66	29%
Contract	227	59	0	1	0	-100%
County	2,801	2,882	2,704	2,014	1,868	-7%
FBOP	9	11	17	6	4	-33%
FED	281	409	534	556	398	-28%
ICE	2,179	2,792	2,880	3,606	4,030	12%
Other	168	161	186	146	166	14%
PRO	489	392	428	403	355	-12%
State	0	0	0	0	0	0%
Sanction	0	10	6	13	10	-23%
Trans In	9	12	8	18	15	-17%
<b>TOTAL</b>	<b>6,232</b>	<b>6,779</b>	<b>6,808</b>	<b>6,814</b>	<b>6,912</b>	<b>1%</b>

The total number of bookings for 2011 was up over last year by 1%. Since 2005, bookings have increased 68%. The 2011 increase for the detention facility bucks a trend across the state that saw the overall number of bookings drop. The difference for the detention facility can be attributed to an increase in ICE detainees. The upward trend should level off in 2012 due to the addition of on-site video court for ICE detainees. This procedure was put into place in January, 2012.



## **TRANSPORTS**

	<b>TRIPS</b>	<b>MILES</b>
<b>2003</b>	1,019	215,115
<b>2004</b>	1,164	254,021
<b>2005</b>	1,345	275,187
<b>2006</b>	1,499	344,239
<b>2007</b>	1,538	377,574
<b>2008</b>	1,808	428,170
<b>2009</b>	1,864	408,090
<b>2010</b>	1,766	419,613
<b>2011</b>	2,004	471,248
<b>TOTAL</b>	<b>14,007</b>	<b>3,193,257</b>

<b>2011</b>	<b>TRIPS</b>	<b>MILES</b>
USMS Milwaukee	395	38,940
USMS Madison	20	1,805
USMS Chicago	92	28,003
Immigration	1,497	402,500
<b>TOTAL</b>	<b>2,004</b>	<b>471,248</b>

## **REVENUES AND EXPENSES**

	<b>2007</b>	<b>2008</b>	<b>2009</b>	<b>2010</b>	<b>2011</b>
<b>Revenues</b>	\$8,848,001	\$9,016,649	\$8,776,347	\$9,243,950	\$10,365,332
<b>Expenses</b>	\$8,534,408	\$9,205,390	\$9,327,537	\$9,823,568	\$9,946,625
<b>Net Levy</b>	(\$313,593)	\$188,741	\$551,190	\$579,618	(\$418,707)

After calculating revenues and expenses for the main facility and the Huber facility, no costs were assessed against the levy to run the entire jail. A surplus of \$418,707 was generated.

## **PROGRAMS**

### **COMMUNITY WORK PROGRAM**

In 2011, 103 Huber prisoners worked a total of 54,408 hours at 40 different job sites. This saved the county approximately \$79,620 in housing and other related costs by a reduction in the length of inmate sentences.

### **NEW PROGRAMS OFFERED**

In 2011, a recordable books program and an art contest program were introduced to the facility.

The *Recordable Books Program* started as a way for inmates to maintain better contact with their children. A recordable book is utilized to allow the inmate to read the book to their child. Their voice is recorded in the book and then mailed out to the child. Once received, the child opens the book and follows along while they listen to their parent read the book to them. This program is intended to help maintain some level of communication with children while their parent is incarcerated. The book also provides a way for an inmate to reach out to their children in an attempt to maintain the parent child bond while incarcerated. As a result, certain stressors in the life of the inmate can be reduced resulting in more positive behavior while at the facility. All costs of this program are borne by the inmate. Costs are kept low so that more inmates can have access to the program.

The *Art Contest Program* started as a way to harness the creative and artistic abilities of inmates as well as a way to provide a positive activity for inmates to be involved in. Each month a theme is selected and inmates sign up to receive the paper to submit their drawing on. One drawing is selected each month as the winner. The winning drawing is posted in the main corridor of the facility and is also posted in each of the housing units. The inmate who submits the winning drawing may choose between one of two rewards. The inmate may select one item from the Fresh Favorites menu provided free of charge by Aramark, the facility's contracted food service provider. If the inmate qualifies, in place of the food selection, the inmate may receive up to an hour and a half of extra time on one visit. The October, 2010 winner's art is featured on the back cover of this report.

### **SEWING PROGRAM**

The sewing program continues to produce cost savings for the county. Over a period of 5 years the sewing program has saved the county approximately \$74,535.22 in costs related to clothing and linen replacement. Huber prisoners were also involved with this program earning sentence credit which also resulted in savings related to housing costs.

## **2011 Saved Items**

	<b>Pants</b>	<b>Shirts</b>	<b>Blankets</b>	<b>Mattress Covers</b>	<b>Sheets</b>	<b>Towels</b>	<b>Boxers</b>
<b>Total</b>	1,070	448	15	34	221	28	1,561
<b>Unit Price</b>	\$8.82	\$6.86	\$6.25	\$6.20	\$3.10	\$1.73	\$2.67
<b>Savings</b>	\$9,437.40	\$3,073.28	\$93.75	\$210.80	\$685.10	\$48.44	\$4,167.87

<b>Year</b>	<b>Pants</b>	<b>Shirts</b>	<b>Blankets</b>	<b>Mattress Covers</b>	<b>Sheets</b>	<b>Towels</b>	<b>Boxers</b>	<b>Total</b>
<b>2007</b>	\$2,566.80	\$2,112.16	\$705.28	\$1,643.00	\$68.25	\$1.05	\$0.00	\$7096.54
<b>2008</b>	\$8,451.84	\$2,363.90	\$152.00	\$2,331.20	\$9.75	\$1.05	\$0.00	\$13,309.74
<b>2009</b>	\$8,767.08	\$3,100.72	\$168.75	\$2,269.20	\$43.40	\$13.84	\$2579.22	\$16,942.21
<b>2010</b>	\$11,210.22	\$4,918.62	\$106.25	\$105.40	\$151.90	\$44.98	\$2,872.92	\$19,456.29
<b>2011</b>	\$9,437.40	\$3,073.28	\$93.75	\$210.80	\$685.10	\$48.44	\$4,167.87	\$17,730.44

### **2011 Jail Programs**

<b>SELF IMPROVEMENT</b>	<b>Participants</b>	<b>Events</b>
Alcoholic Anonymous	318	1,543
Anger Management	12	160
ESL	141	997
GED	81	1,158
Basic English	134	1,112
<b>TOTALS</b>	<b>686</b>	<b>4,970</b>

<b>WORSHIP</b>	<b>Participants</b>	<b>Events</b>
Bible Studies	982	3,544
Worship Service	391	1,515
<b>TOTALS</b>	<b>1,373</b>	<b>5,059</b>

<b>WORK</b>	<b>Participants</b>	<b>Events</b>
Carwash	39	1,260
Kitchen Worker	81	4,617
Laundry Worker	22	1,659
Pod Worker	74	3,112
Sewing	25	412
<b>TOTALS</b>	<b>241</b>	<b>11,060</b>

