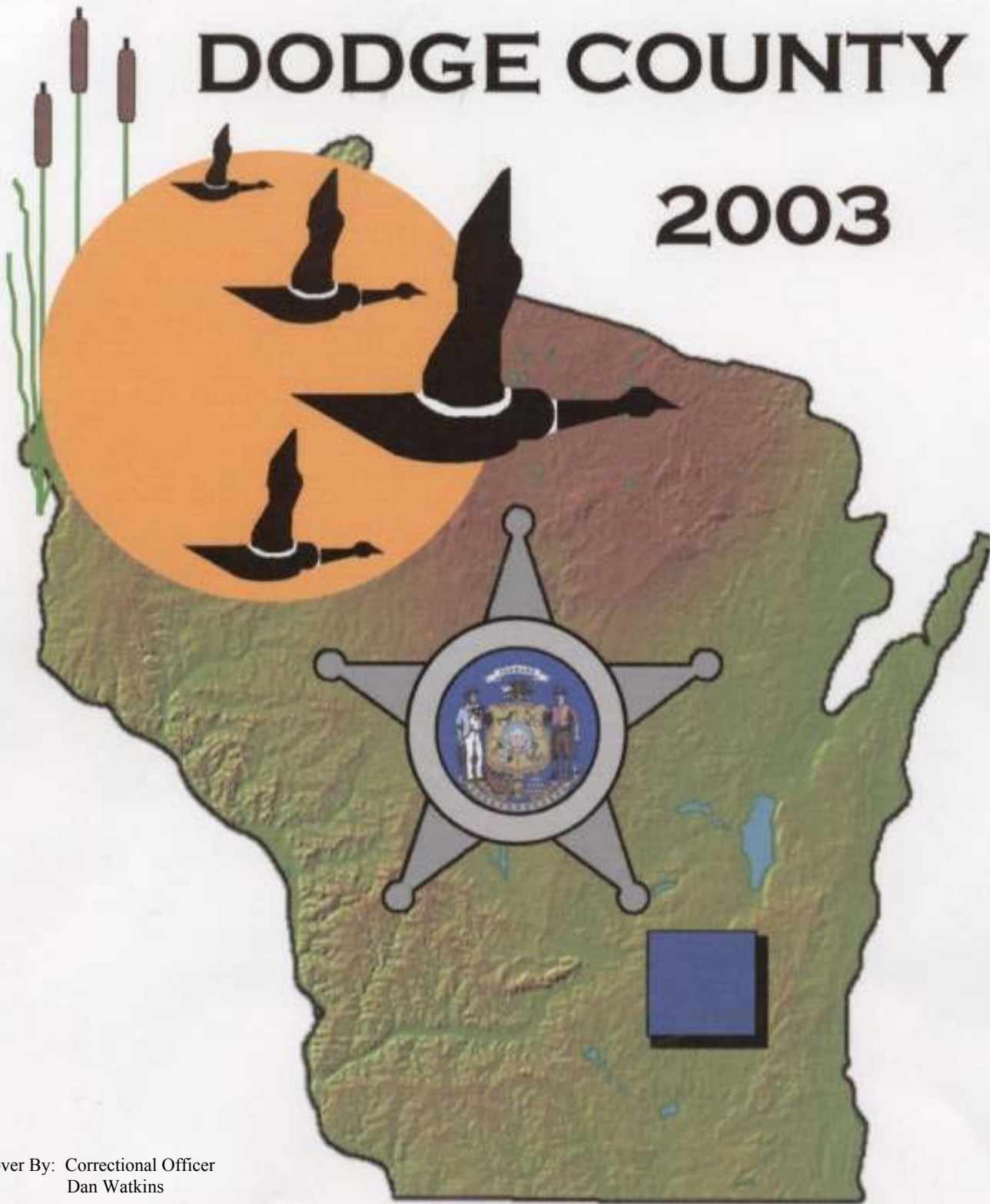


DODGE COUNTY

2003



Cover By: Correctional Officer
Dan Watkins

ANNUAL REPORT

OFFICE OF DODGE COUNTY SHERIFF

TODD M. NEHLS
Sheriff



BLAINE LAUERSDORF
Chief Deputy

Dear Chairman Swain and Members of the Board:

It is with a great deal of pride that I submit to you the 2003 Dodge County Sheriff's Department Annual Report. You may notice that there are significant changes in format and content in this years report. This represents our year, as there have been numerous changes in the operations of the Sheriff's Department. The entire Sheriff's Department continues to project a very professional image and the dedicated employees in all the departments and divisions continue to excel. We have started worthy programs, been successful in grant applications, and have transitioned from a reactive posture to proactive. Our goal is to prevent crime not just solve crime.

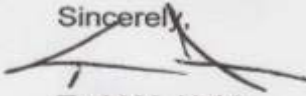
The Dodge County Detention Facility continues to generate revenues that have exceeded projections. We continue to work closely with our Federal partners in an effort to expand the current contract. In August of 2003 we re-opened the old jail, and are used as a work release center. The revenues generated help all county agencies as well as offset the overall tax levy for the overall county budget. We continue to look at alternatives to this program in case these revenues start to decay.

The Patrol Division and Criminal Investigation Division continue to experience success because of the extreme dedication of the employees within. Calls for service, warrants, and transports have risen sharply and we must start to address the future needs in these divisions. The Dodge County Sheriff's Department continues to accommodate the increases in calls-for-service in as prompt of manner as possible. Credit must be given to the men and women of the department that continue to do what they do, under less than desirable conditions. In indicator of their dedication is the significant reduction in our 2003 fatality rate by 30%, 29 in 2002 to 19 in 2003.

I look forward to 2004, planning continues to re-locate the department into the vacated Circuit Court Building. Efforts are also underway to develop the new E911 Center. This project will be a major undertaking that will provide much needed communications improvements for all emergency disciplines throughout the entire county. Other department needs are addressed on the attached pages. I want to thank the Law Enforcement Committee and the entire board for their support of the department in 2003 and their future support in 2004.

The citizens of Dodge County can be proud of their Sheriff's Department as well as each of you, whom they chose to elect and provide the necessary oversight and direction.

Sincerely,



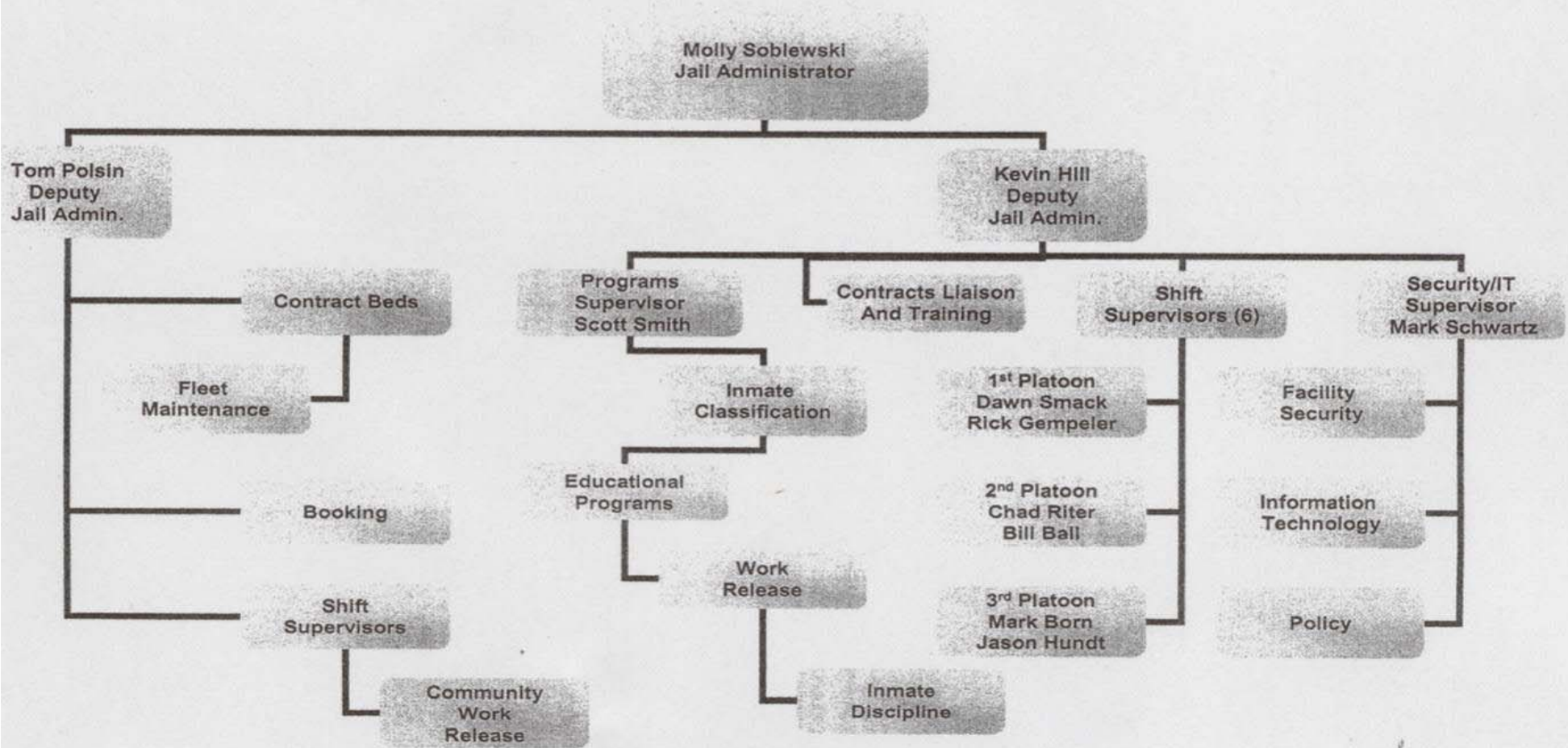
Todd M. Nehls
Sheriff

Significant Improvements in 2003 A - Z

- A. All employees received an in-brief upon Sheriff being sworn in outlining goals, missions, and expectations of all employees.
- B. Developed tremendous Public Relations Program, keeping citizens informed on what is going on and educating the public on how they can help.
- C. Started www.dodgecountysheriff.com, experiencing over 14,000 hits every month.
- D. Started Most Wanted Program, publishing five wanted subjects monthly, starting in April 2003. This program has resulted the arrest of 30 of 41 published as well as arrests of subject sowing in excess of \$160,000.00 in delinquent child support.
- E. Significant uniform changes to include new department patch.
- F. Opened the old jail to house work release inmates to increase overall revenues.
- G. Re-negotiated federal housing contract, receiving an increase of \$5.00 per day per bed. Increases revenues by \$500,000.00 per year.
- H. Fielded tactical rifles in each squad car.
- I. Coin program to reward employees, citizens and businesses for their contribution and assistance to the Sheriff's Department. Forty coins given out in 2003. (Purchased by Sheriff not tax dollars)
- J. Community Service Work Crew – provided much needed labor to non-profit organizations and municipalities. Saved over \$30,000.00 in taxpayer dollars in 2003.
- K. Child ID, 911 Tele-trainer, Fatal Vision, and Staying Alive in 2003 Programs have positively impacted all segments of the county population.
- L. More grants applied for and received in 2003 than in the past ten years.
- M. Established the first Criminal Investigation Division Supervisor.
- N. Upgrade of three communications tower sites with three new sites being worked. Upon completion, Dodge County will be safer for all users, to include fire, EMS, law enforcement and Emergency Management.
- O. Re-established Multi-Jurisdiction Drug Unit after several years' non-existence.
- P. Separated Emergency management from the Sheriff's Department.
- Q. Sheriff has attended 80% of all town board, city council, and village board meetings, opening up dialogue with these municipalities.
- R. Adopt-a-Township Program provided a higher level of services to townships that do not have formal, organic law enforcement resources.
- S. Fielded LOCATER System for runaway juveniles and missing persons.
- T. Implemented the Sexual Assault Nurse Examiner (SANE) Program to aid in investigation of sexual abuse cases.
- U. Reduced fatality rate from 29 in 2002 to 19 in 2003.
- V. In 2003, had an unexpended budget amount of \$1.2 million.
- W. Doubles the amount of training received by employees.
- X. Fielded AED's in every squad.
- Y. Enhanced department moral and productivity
- Z. Integrated GIS and county mapping services into the 911 Center.

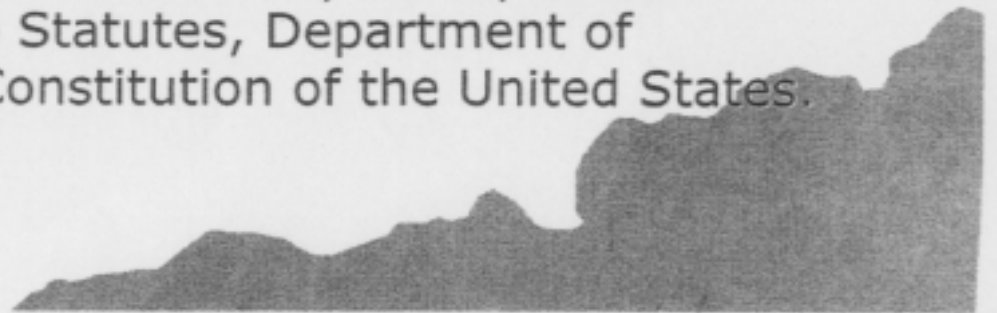
Dodge County Detention Facility

Chain of Command



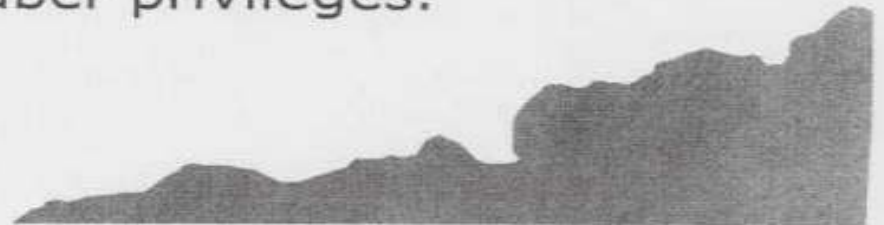
MISSION

- ◆ Chapter 59.27(1) OF THE Wisconsin Statutes mandates that the Sheriff of each county takes charge of the jail maintained by the county. The purpose of the Dodge County Mission Statement is to establish the philosophical basis on which the Dodge County Detention Facility (DCDF) will be operated.
- ◆ The Dodge County Detention Facility, a multi-purpose correctional facility, is designed to house sentenced and unsentenced male and female inmates. We provide for the protection of the public by accounting for all persons incarcerated according to their custody levels. It is also designed to provide for the safety and security of all users, while being operated in a cost-effective manner. The Dodge County Detention Facility will operate in accordance with Wisconsin State Statutes, Department of Corrections standards, and the Constitution of the United States.



- It is important to note while reviewing the statistics that from 2002 to 2003 the make-up of the inmate population shifted as contract beds once occupied by state inmates, are now occupied by federal detainees.

Further, in August of 2003 the old jail was reopened as a work release center for inmates granted huber privileges.



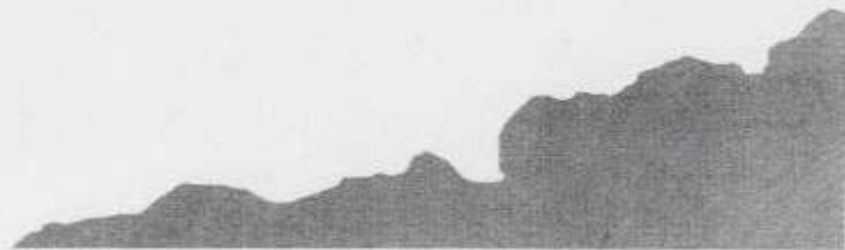
Programs Statistics 2003

PROGRAM	Number of Participants
<i>Home Monitor</i>	138
<i>Work Crew</i>	60
<i>GED</i>	290
<i>E.S.L.</i>	132
<i>Spanish Bible Study</i>	437
<i>Bible Study</i>	221
<i>Catholic Bible Study</i>	98
<i>Christian Worship</i>	183



Revenues/Expenses/Levy

◆ Actual				
◆	2000	2001	2002	2003
◆ Rev	415,880	2,353,798	5,212,796	5,821,024
◆ Exp	3,073,312	4,674,321	5,886,719	6,809,500
◆ Net Levy	3,044,279	1,854,819	1,854,819	1,648,786
◆ Net Exp	2,657,432	2,320,523	673,923	988,476
◆ +/- Net Levy	-386,847	465,704	-1,180,896	-660,310



BOOKINGS

♦ Bookings	2001	2002	2003
-	3416	4503	5677
- % Increase		31.82	26.07

Gender: Male 88.22%
Female 11.78%

Race: White 87.79%
Black 9.19%
Asian 1.96%
NA 0.78%

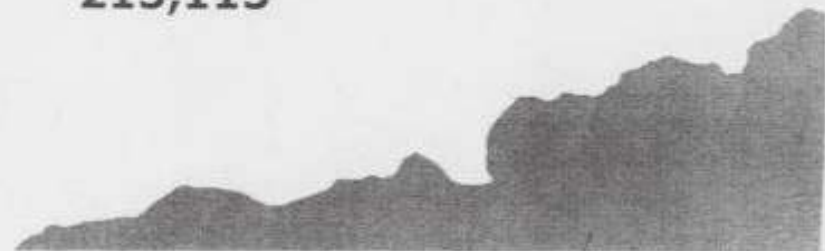
Ethnicity: Hispanic 29.63%
Other 70.37%

Age Under 19 0.77%
19 to 25 28.60%
26 to 40 45.63%
41 to 60 18.88%
Over 60 0.90%



TRANSPORTS/MILAGE

♦ 2003 ICE TRANSPORTS	560
♦ ICE MILAGE	153,409
♦ 2003 USM MILW TRANSPORTS	418
♦ USM MILW MILAGE	50,556
♦ 2003 USM CHICAGO TRANSPORTS	41
♦ USM CHICAGO MILAGE	11,150
♦ TOTAL TRANSPORTS	1,019
♦ TOTAL MILAGE	215,115



DAYS IN CUSTODY

◆ AVERAGE DAYS IN CUSTODY PER YEAR:

◆ CITY	13.57
◆ CNTR	31.16
◆ CTY	31.75
◆ FBOP	37.22
◆ FED	48.60
◆ ICE	24.56
◆ OTH	2.41
◆ PRO	15.72
◆ ST	1.00
◆ TRNS	66.00
◆ COMBINED	28.91



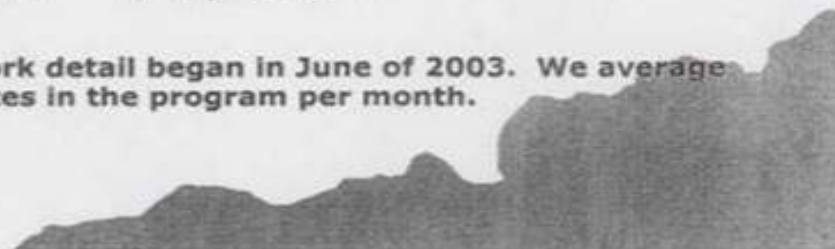
COMMUNITY SERVICE WORK DETAIL

- ◆ WORKSITES: Beaver Dam City Hall
BD Parks and Rec
BD Public Works
BD YMCA
Fox Lake Highway Dept.
FL Wastewater plant
Horicon Ledge Park
Pod J transition
Township of Beaver Dam
Oakhill Cemetery
Bethesda

TOTAL DAYS SAVED: 380.80

TOTAL COST SAVINGS \$22,848.00

The community service work detail began in June of 2003. We average approximately 18 inmates in the program per month.

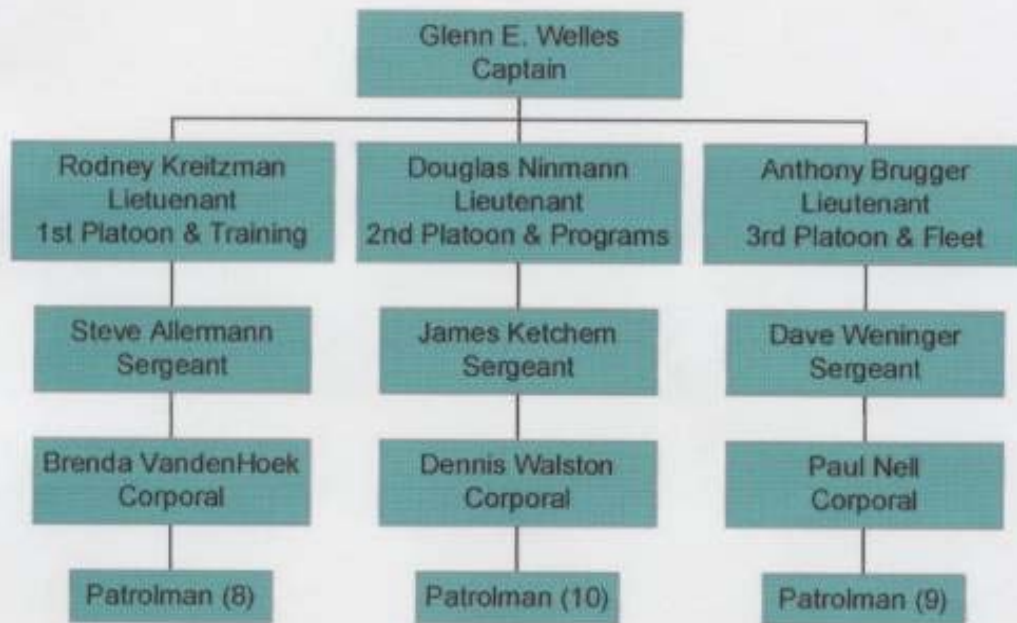


PATROL DIVISION



Glenn E. Welles
Captain

Patrol Division



2003 ANNUAL REPORT PATROL DIVISION

Patrol Division deputies are the "first responders" in the Sheriff's Department. These men and women are normally the first to be dispatched to crime scenes and traffic crashes. They conduct investigations and enforce traffic and criminal laws. Patrol deputies assist other divisions of the Sheriff's Department as needed. When not on an assignment, their mission is to maintain a highly visible presence in their patrol sector.

Two specialized units within the division assist other deputies and other law enforcement agencies in carrying out their duties. Those units are the Crash Investigation Team (CIT) and the Drug Recognition Experts. CIT members respond to major traffic crashes. They utilize specialized equipment and training to record the scene and collect and preserve evidence.

Drug Recognition Experts are called upon by other officers to assist in evaluating the condition of persons arrested for impaired driving. Impaired driving includes driving while under the influence of alcohol, illegal drugs or prescription drugs or any combination thereof.



FIVE-YEAR TRAFFIC ACCIDENT TRENDS							
	1999	2000	2001	2002	2003	Percent Change	1998-2002 Average
Fatal	19	22	14	28	18	-36%	19
Fatalities	21	24	15	29	19	-34%	21
Injury	309	356	235	242	239	-1%	280
Car/Deer	498	483	341	403	521	29%	440
Motorcycle	15	12	13	9	22	144%	13
Total	1,326	1,473	1,032	1,135	1,264	11%	1,237

FIVE-YEAR CITATION TRENDS							
	1999	2000	2001	2002	2003	Percent Change	1998-2002 Average
OWI	202	214	205	232	302	30%	216
Underage Drinking	182	213	177	147	191	30%	173
Speeding	2,187	1,388	2,469	1,478	2,112	43%	1998
Safety Belt	192	175	213	101	343	240%	174
Fail to Stop	182	170	132	96	143	49%	139
OAR/OAS	266	201	205	261	320	23%	245

Drug Recognition Expert (DRE)

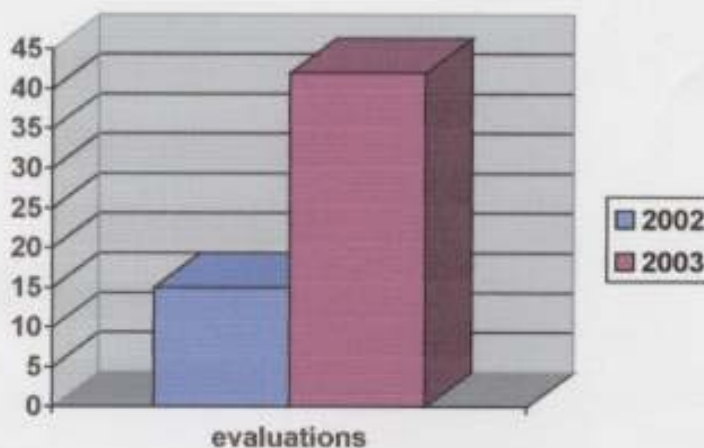
The Dodge County Sheriff's Department has joined with the State of Wisconsin in a program to identify drivers who are driving while impaired. The impairment may be due to the person using illegal drugs, misusing prescription drugs or using any type of drug in combination with alcohol. The DRE can evaluate the person for extent of their impairment and type of impairment.

The DRE will assist the arresting officer and the District Attorney with the prosecution of the case.

Dodge County currently has two deputies trained as DRE's. They are available to assist any other police agency in the county. Last year Dodge County lead the state in the number of DRE evaluations performed.

DRE Evaluations

2002	2003
15	42



Recreation Vehicle Enforcement

The Dodge County Sheriff's Department participates with the DNR in a program to enforce ATV, Snowmobile and Watercraft laws. These programs, funded through the DNR, strive to provide safe recreational opportunities for our citizens and for visitors to Dodge County.

The Sheriff's Department has been involved with recreational enforcement for many years and is in the process of expanding the program due to the activity in the county.

This past year the department added two Polaris all-terrain vehicles. These units were made available through a grant to Dodge County.

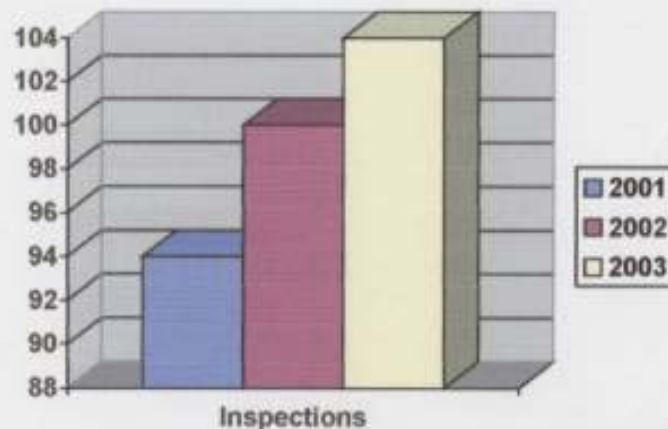
Recreation Vehicle Enforcement							
	2001-02 Season				2002-03 Season		
	Hours	Cit.	War.		Hours	Cit.	War.
	Snowmobile	69	8	6	43	14	1
% Change							

Salvage Inspections

The Dodge County Sheriff's Department's Vehicle Inspection program provides a process where a vehicle that has been previously damaged and then repaired to be titled and registered for operation in Wisconsin. The Deputies that provide this service are trained by the state and attend training annually to stay current with safety information. This ensures that a vehicle that has been inspected is safe for operation. Dodge County is reimbursed for every inspection conducted by the department.

Inspections & Revenue

	2001	2002	2003
Inspections	94	100	104
Revenue	\$5640	\$6000	\$6240



DODGE COUNTY SHERIFF'S DEPARTMENT COURT SECURITY – 2003

MISSION STATEMENT

In response to Chapter 59.27 (3) of the Wisconsin statutes and Chapter 70.38 of the Wisconsin State Supreme Court Rules, the Sheriff of Dodge County and the Presiding Judge, has established a level of court security in the Dodge County Justice Facility. The Dodge County Sheriff and the Presiding Judge wish to address the potential dangers to the safety of County and State employees who work in the Dodge County Justice Facility as well as that of the public who conduct business in the facility.

Court security in the Justice Facility is designed to increase building security in a fiscally responsible manner. The manner of security is also designed to avoid unreasonable inconvenience to both staff and the public. Court security will provide a deterrent to acts of violence in the facility by maintaining a presence of security in the facility and by attempting to keep dangerous weapons and other unauthorized items out of the facility. A secondary mission of the court security staff includes providing information, direction, and other customer service needs to the public.

Re-keying of the Justice facility was completed during the month of July. Unscheduled maintenance totaling \$1,575.43 was completed on the x-ray machine to replace several circuit boards.

ARRESTS	<u>2003</u>	<u>2002</u>	<u>2001</u>
From Disturbances	0	0	2
Miscellaneous	1	1	0
Warrants	<u>36</u>	<u>26</u>	<u>2</u>
Total	37	27	4
DISTURBANCES			
Clerk of Courts Area	0	0	1
Courtrooms	0	6	3
Family Court	0	1	2
Other Areas	<u>2</u>	<u>2</u>	<u>4</u>
Total	2	9	10
MISCELLANEOUS			
Paper Service	3	1	1
Subjects Taken Into Custody	25	18	5
Special Requests for Security	6	8	4
Contraband Confiscated	0	0	1
Weapons Confiscated	<u>0</u>	<u>0</u>	<u>1</u>
Total	34	27	12

Criminal Investigation Division

The Criminal Investigation Division consists of one Lieutenant and 6 Detectives who have a combined total of over 140 years of law enforcement experience. Each Detective is a trained professional that is dedicated to solving crime and serving the residents of Dodge County.

There are many specialties within the Criminal Investigation Division. Some of which include death investigations, Internet crimes, property crimes, drug enforcement, crimes involving children, white collar crimes. Detectives receive specialized training to assist in their investigations. One Detective's primary responsibility is investigating offenses, which occur within the four State of Wisconsin prisons which are in Dodge County.

In 2003 the Criminal Investigation Division investigated over 450 cases.

Trends seen in 2003.

- Marked increase in computer based crime.
- Marked increase in identity thefts.
- Marked increase in child sexual assaults

The Criminal Investigation Division consists of:

Lt. Trace Frost – Chief of Detectives

Detective Gerald Beier

Detective Robert Neuman

Detective Mark Murphy

Detective Jo Anne Stoddard

Detective James Engels

Detective Vickie Brugger.

One Detective has been assigned to work drug offenses on a full-time basis. This has proven to be one of the most valuable and constructive changes made in 2003.

At the end of 2003 the Sheriff's Department also negotiated the transfer of Investigator Brian Drumm from the District Attorney's Office. Starting January 1, 2004, Investigator Drumm will be shared on a 50/50 basis with the Sheriff's Department and he will be assigned as Institutional Investigator for the Wisconsin Correctional Institutes in Dodge County.

2003 CRIME STATISTICS					
	1999	2000	2001	2002	2003
Violent Crimes--Total	18	26	24	21	23
Murder	0	1	1	0	0
Forcible Rape	1	4	2	2	5
Robbery	0	0	0	0	3
Aggravated Assault	17	21	21	19	15
Property Crimes--Total	323	270	337	369	287
Burglary	86	62	122	86	108
Theft	207	190	169	231	158
Motor Vehicle Theft	28	18	19	25	20
Arson	2	0	3	6	1
Crime Clearance Rates 2003					
Type of Crime	Number	Solved	Percentage		
Murder	0	0	0		
Forcible Rape	5	4	80		
Robbery	3	2	66.6		
Aggravated Assault	15	15	100		
*The Sheriff's Dept. solved 82.2% of all violent crimes in 2003					
Burglary	108	20	18.5		
Theft	158	31	19.6		
Motor Vehicle Theft	20	14	70		
Arson	1	0	0		
*The Sheriff's Dept. solved 27% of all property crimes in 2003.					
This is the highest crime solving rate in over 7 years.					

Uniformed Crime Statistics

			2001		2002		2003	
	2000	2001	Increase/ Decrease	2002	Increase/ Decrease	2003	Increase/ Decrease	3-Year Average
Violent Crimes--Total	26	24	-7.69%	21	-12.50%	23	9.52%	-3.56%
Murder	1	1		0		0		
Forcible Rape	4	2		2		5		
Robbery	0	0		0		3		
Aggravated Assault	21	21		19		15		
Property Crimes--Total	270	337	24.81%	369	9.50%	287	-22.22%	4.03%
Burglary	62	122		86		108		
Theft	190	169		231		158		
Motor Vehicle Theft	18	19		25		20		
Arson	0	3		6		1		
Average all Crimes			12.41%		4.75%		-11.11%	0.24%

2003 DRUG UNIT ACTIVITY

The Dodge County Drug Investigation Unit comprises of one full-time Detective. That Detective is augmented by several employees that work in the Drug Unit on special assignment. At the beginning of 2003 the Sheriff's Dept. entered into dialouge with other Dodge County area law enforcement agencies to form a Multi-jurisdictional Drug Unit. By the end of the year an agreement was reached and signed. The unit has since applied for and received a grant from the WI Office of Justice Assistance in the amount in excess of \$50,000.00. This money is used to purchase equipment and pay wages.

In June 2003, the Sheriff's Dept. in cooperation with the State of Wisconsin executed a search warrant on a Town of Clyman residence. The results of that search and subsequent searches, surpassed any other drug investigation conducted by the Sheriff's Dept. in the past ten years. The efforts of two Sheriff's Dept. employees will net the county forfiures of property, cash and real estate in excess of \$200,000.

We **MUST** continue to aggressively investigate drug activity and provide significant resources for this very time time consuming and resource extensive mission.

INVESTIGATIONS	88
CRIMINAL CHARGES	93
VEHICLES SEIZED	5
MONIES SEIZED	\$150,546
FIREARMS SEIZED	41
AMMUNITION SEIZED	12,000 rounds

CIVIL PROCESS 2003

	2001	2002	Increase/ Decrease	2003	Increase/ Decrease	2-Year Total
Writs of Executions						
Executions Handled	5	8	60%	20	150%	210%
Executions Unsatisfied	5	1	-80%	3	200%	120%
Satisfactory Arrangements Made	10	9	-10%	17	89%	79%
Seized Vehicles	1	3	200%	9	200%	400%
Seized Mobile Homes	2	3	50%	4	33%	83%
Seized Boat-Motor-Trailer-Snowmobile	1	3	200%	7	133%	333%
Out of County	0	0	0%	0	0%	0%
Number pending	0	0	0%	0	0%	0%
TOTALS	24	27	13%	60	122%	135%

Writs of Assistance

Returned Atty's Request	4	1	-75%	2	100%	25%
Seized Boat-Motor-Trailer	4	3	-25%	0	-100%	-125%
Seized Vehicles	0	0	0%	1	0%	0%
Seized Business Equipment	0	2	0%	2	0%	0%
Residence	10	0	-100%	0	0%	-100%
Mobile Homes	1	1	0%	1	0%	0%
Not found	0	1	0%	0	-100%	-100%
TOTALS	15	8	-47%	6	-25%	-72%

Writs of Restitution **67** **95** **42%** **112** **18%** **60%**

Writs of Replevin **32** **65** **103%** **70** **8%** **111%**

Seized Personal Property			
Autos, Semis, Boats	30	65	40
Mobile Homes, Motor Homes	0	3	3
Motorcycles, Shop Tools	1	2	8
Farm Machinery	0	40	20
Cattle	0	127	19
Not Found	6	5	0

Writs of Capias **0** **0** **0%** **0** **0%** **0%**

Overall Divisional Increase **110.75%** **122.81%** **233.56%**

CIVIL PROCESS SERVICE REPORT - 2003

			2001		2002		2003	
Civil Process	2000	2001	Increase/ Decrease	2002	Increase/ Decrease	2003	Increase/ Decrease	3-Year Increase
<i>Total Papers Served</i>	3,240	3,300	1.82%	4,277	32.01%	4,076	-4.70%	29.12%
Prison Papers Served	191	168	-13.69%	193	14.88%	170	-11.92%	-10.73%
Mileage for Prison Service	unknown	unknown		3,740		6,010	60.70%	60.70%
<i>Revenue</i>	\$114,158	\$107,506	-6.19%	\$123,266	14.66%	\$146,210	18.61%	27.09%
<i>Average Increase</i>								29.12%
<i>Interagency papers</i>								
Served for DC Agencies	152	76	-100.00%	66	-13.16%	61	-7.58%	-120.73%
Charges for DC Papers	\$4,205	\$2,757	-52.54%	\$2,369	-14.06%	\$2,984	25.96%	-40.64%

Sheriff's Sales - 2003

			2001		2002		2003	
	2000	2001	Increase/ Decrease	2002	Increase/ Decrease	2003	Increase/ Decrease	3-Year Average
<i>Total Sales</i>	60	44	-36.36%	83	88.64%	75	-9.64%	14.21%
<i>Total Dollar Amount</i>	\$5,283,892	\$3,633,437	-45.42%	\$7,971,228	119.39%	\$6,866,780	-13.83%	20.04%
<i>Average Sale</i>	\$88,064.87	\$82,578.11	-6.64%	\$96,038.89	16.30%	\$91,583.74	-4.64%	1.67%

TRANSPORTATION REPORT - 2003							
	2001	2002	Increase/ Decrease	2003	Increase/ Decrease	2 Year Average	
Total Transports	908	1028	13.22%	1017	-1.07%	12.15%	
Warrant Pickups	249	268	7.63%	313	16.79%	24.42%	
Juvenile Pickups	112	150	33.93%	146	-2.67%	31.26%	
Juvenile Transport Hours	303	343	13.20%	364	6.12%	19.32%	
Juvenile Transport Miles	10,825	12,311	13.73%	12,945	5.15%	18.88%	
Total Hours	2,761	2,772	0.40%	2,809	1.33%	1.73%	
Total Miles	99,681	104,770	5.11%	107,398	2.51%	7.61%	
Overall Workload +/-			87.21%		28.17%	115.38%	

WARRANTS DIVISION

The numbers below reflect the number of warrants issued and executed during the past three years. The increase from 2002 to 2003 alone is over 40%. We contribute this increase to an aggressive stance on crime and holding people accountable to their debt to society.

The Warrants Division is a division of one. The Warrants Secretary is also the data entry point for all lost and stolen items and articles. With the increase in warrant data entry and cancellations, we have seen a drop in the quality control of our warrant data entry. Each month the State of Wisconsin requires the Sheriff's Dept. to validate our current active warrants. This is a very time consuming requirement that takes approx. 16 hours a month to complete. The Communications Division is completing that task in order to relieve the Warrants Secretary from that tasking.

The department is currently working with the courts, the Clerk of Courts and other to start a tax intercept for those whom fail to pay fines or forfeitures rather than issue an arrest warrant. This will save valuable time and effort and also enhance the county's ability to collect these monies.

Year	Warrants Entered	Warrants Cancelled	Total
2001	1,116	1,203	4320
2002	1,221	1,139	4362
2003	1,766	1,466	5235

*As of 03-15-04 all active warrants are now posted on the Sheriff's Department web-site.

DODGE COUNTY COMMUNICATIONS



2003 Annual Report

Dodge County Communications Center



- The Dodge County Sheriff's Communications Center answers emergency and non-emergency calls and other requests for service 24 hours a day, seven days a week. Effective communication support is essential for the management of Patrol, investigative and planning functions of the department. The intent of the Communications Division is to effectively, courteously and promptly receive and record requests for the law enforcement service, dispatch units, provide the department with the centralized control of personnel and facilitate field operations through the rapid dissemination of critical information by radio and telephone. The Communications Division is the PSAP for the Dodge County E911 system.

- The Dodge County Sheriff's Department handled over 39,000 calls for service in 2003. As the hub for communication services in Dodge County, Communications Officers conduct initial assessment of requests and apply guidelines that screen the nature and urgency of incoming calls. The guidelines are a reflection of the Sheriff's policy, developed through his strategic plan and a balancing of resources, requiring uniform public safety access throughout Dodge County.

■ BASIC FUNCTION

■ Call Taking

- a. E911
- b. Cellular 911
- c. Non-emergency administrative calls
- d. TDD

■ Computer Enhancements

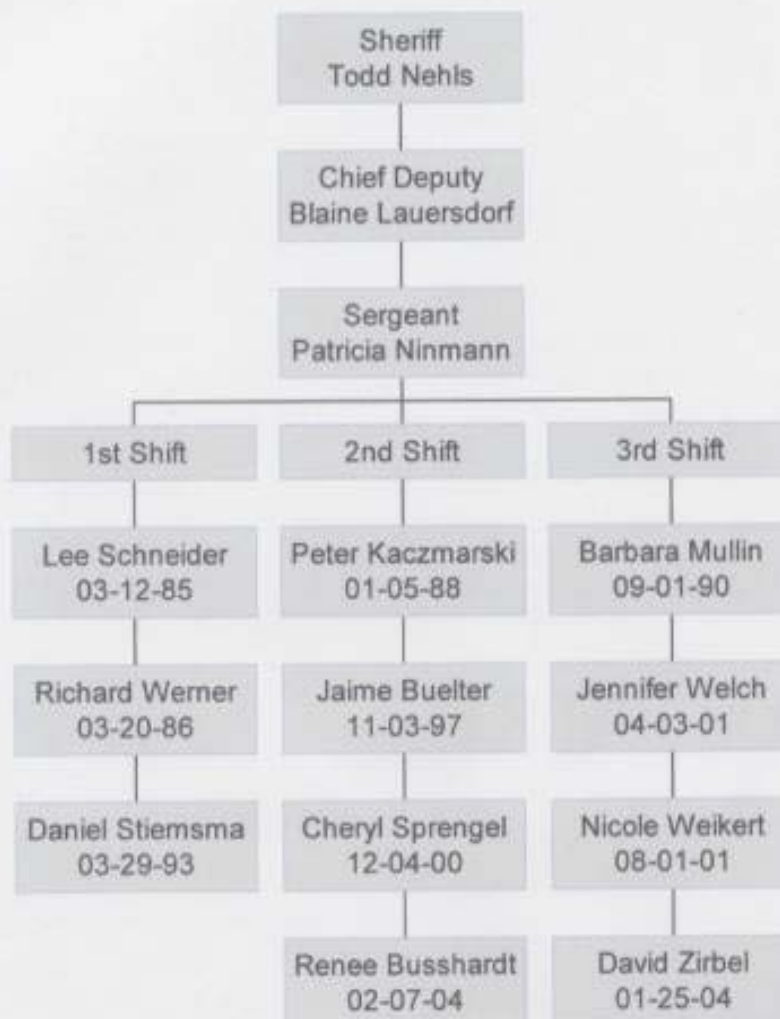
- a. Computer aided dispatch (Tiburon CAD)
- b. CIB/NCIC link
- c. Weather (DTN/NAWAS)
- d. 24 hour telephone/radio recording
- e. Locator

■ Radio

- a. Sheriff's Department frequency
- b. Car-to-car police frequency
- c. Fire ground
- d. Point-to-point/wisperm
- e. Marc 1/ Marc 2
- f. Highway Department

Organizational Chart

Communications Division

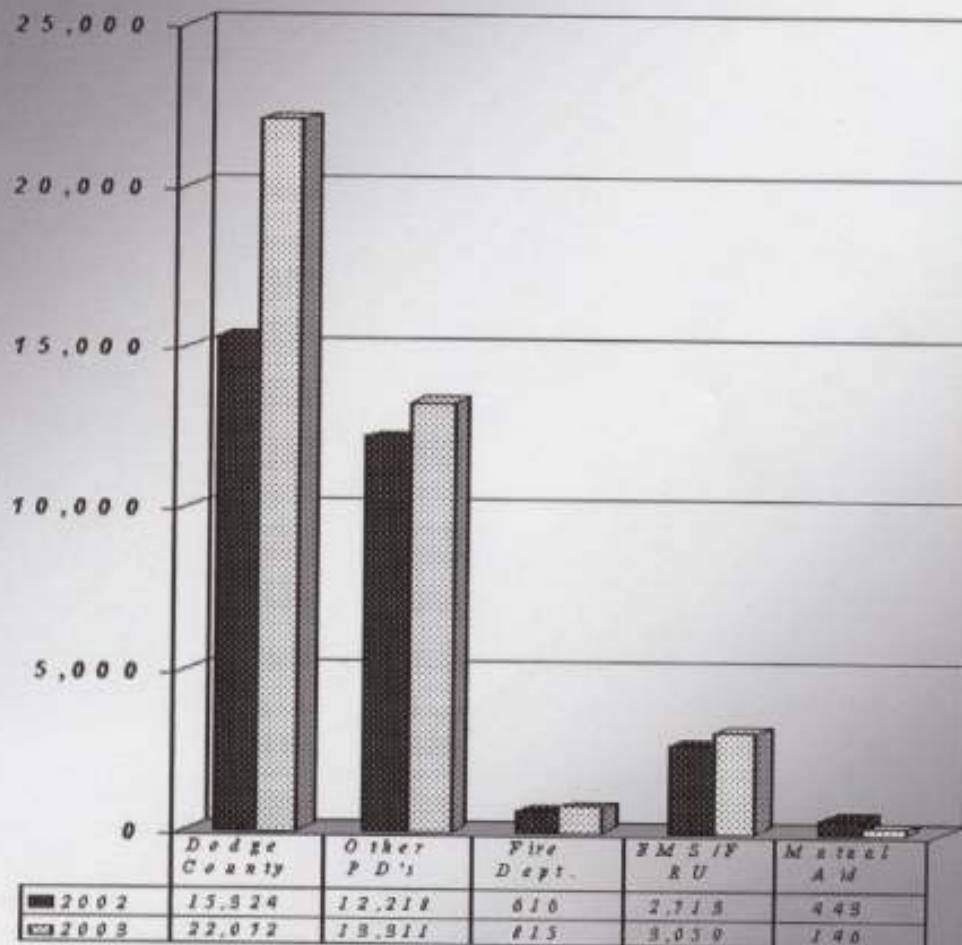


Calls For Service 2003

■ Dodge County	22,072
■ All other PD's	13,311
■ Fire Departments	815
■ EMS/FRU	3,059
■ <u>Mutual Aid</u>	<u>146</u>
■ TOTAL	39,403

2 YR. COMPARABLE

	2002	2003
Dodge County	15,324	22,072
Other P D's	12,218	13,311
Fire Departments	616	815
E M S / F R U	2,713	3,059
M utual Aid	443	146



Calls By Reporting District Dodge County Sheriff's Dept.

DODGE COUNTY SHERIFF	2002	2003
Administration	384	412
Chaplain	10	21
Communications	335	593
Patrol Deputies	12953	19407
Civil Process/Transport	722	905
Dodge County Detention	457	734
TOTAL:	14861	22072
9-1-1 Calls		5690
Warrant Confirmations		539

Calls By Reporting District Police Departments

DEPARTMENT	2002	2003
Twn. Beaver Dam	217	391
Beaver Dam	80	101
Brownsville	455	496
Clyman	4	50
Columbus		24
Emmet/Lebanon	344	269
Twn. Fox Lake	222	216
Fox Lake	1019	1261
Horicon	1737	1803
Twn. Hustisford	47	48
Hustisford	226	210
Iron Ridge	293	192
Juneau	1181	1136
Lomira	1536	2030
Lowell	36	103
Mayville	1449	1611
Neosho/Rubicon/Ashippun	548	464
Other	42	75
Randolph	1049	902
Reeseville	175	248
Theresa	1166	1108
State Patrol	392	527
Waupun		22
Watertown		24
TOTAL:	12218	13311

Calls By Reporting District Fire Calls

DEPARTMENT	2002	2003
ALLENTON	5	4
ASHIPPUN	33	61
BEAVER DAM	63	88
BROWNSVILLE	24	29
BURNETT	18	27
CLYMAN	22	23
COLUMBUS	12	26
FOX LAKE	32	26
HARTFORD	5	17
HORICON	36	36
HUSTISFORD	19	29
IRON RIDGE	25	33
JUNEAU	48	45
KEKOSKEE	21	12
KNOWLES	10	6
LEBANON	29	45
LOMIRA	31	54
LOWELL	5	3
MAYVILLE	28	31
NEOSHO	15	11
RANDOLPH	34	36
REESEVILLE	11	26
THERESA	21	36
WATERLOO	12	16
WATERTOWN	25	40
WAUPUN	14	24
WOODLAND	18	31
TOTALS:	616	815

Calls By Reporting District EMS/FRU

DEPARTMENT	2002	2003
ALLENTON EMS	7	5
ASHIPPUN FRU	92	53
BEAVER DAM EMS	212	246
BROOKS EMS	32	30
BROWNSVILLE FRU	55	60
BURNETT FRU	20	23
CAMPBELLSPORT FRU		12
CLYMAN FRU	31	30
COLUMBUS EMS	38	35
FOND DU LAC EMS	8	30
FOX LAKE EMS	117	143
HARTFORD EMS	115	141
HORICON EMS	380	400
HUSTISFORD FRU	73	85
IRON RIDGE FRU	60	73
JUNEAU EMS	309	348
KEKOSKEE FRU	47	46
LEBANON EMS	108	114
LOMIRA FRU	99	126
LOWELL FRU	19	20
MAYVILLE EMS	344	456
NEOSHO FRU	28	51
OCONOMOWOC EMS	45	32
RANDOLPH EMS	132	153
REESEVILLE FRU	25	76
STONE BANK EMS		2
THERESA EMS	131	177
WATERLOO EMS		29
WATERTOWN EMS	71	59
WOODLAND FRU	0	4
TOTAL:	2598	3059

COMMUNITY PROGRAMS

Community Programs is the educational aspect of the Sheriff's Department Community Policing Program. We attempt to develop awareness of Sheriff's Department functions and to assist citizens of all ages in having a better understanding of how we can assist them should they need emergency services. We can also assist with crime prevention and daily living experiences like proper installation of a child safety seat.

The Sheriff's Department can develop a program geared to a school, a specific group, organization or interest. We also offer programs that are based on a national model such as Fatal Vision. Other prepared programs offered this past year were KID I.D.; 9-1-1 for Kids; Operation Childsafe; and Child Passenger Safety Seat Technicians.



Fatal Vision 2003

The Dodge County Sheriff's Department this year started a new program, geared toward the high school youth of our county, in an effort to reduce alcohol related traffic crashes. The program is called "Fatal Vision – Be Smart Don't Start".

Our Dodge County youth deserve a safe life. The program is interactive and audience participation based. Instructors explore teenagers identity ("Who am I?"), peer pressure, attitudes and behaviors. The program also educates students about alcohol abuse and the associated risk taking behaviors.

The Dodge County Sheriff's Department believes that through education we can help our youth make smart decisions and choose not to drink.

FATAL VISION 2003				
	Freshman	Sophomore	Junior	Senior
Beaver Dam	313	276	295	274
Watertown	352			
Hustisford			49	50
Dodgeland			74	68
Horicon			99	92
Waupun		199		
TOTAL = 2141	665	475	517	484

KID I.D.

The Dodge County Sheriff's Department has developed a program that helps with the identification of children. The program consists of having the child photographed and fingerprinted. The photograph and fingerprints along with the child's other identifying information is then put on an ID card. The parents name and phone number is also placed on the card. The parent may carry the card with them or they may place the card in the child's pocket. Two cards per child will be issued if it is requested.

Besides being useful for parents, day care centers and schools will find the I.D. cards useful when taking children on field trips. The information on the card can be updated annually.

KID I.D. PROGRAM		
	2002	2003
Number of Children	1,405	1,730

9-1-1 FOR KIDS

This program was developed by the Dodge County Sheriff's Department to explain the proper use of the 9-1-1 emergency calling system. Children are taught what they can expect when they dial 9-1-1, what questions will be asked, and also what to do in certain situations. (i.e. fire, EMS, suspicious person etc.). The children are allowed to ask questions and they are given various safety handouts relating to 9-1-1 and emergency services.

In 2003, the program added a 9-1-1 Tele-Trainer that lets the child experience an actual call to a 9-1-1 Operator. They can hear the operator ask them questions and learn how to respond to those questions.

9-1-1 For Kids		
	2002	2003
Number of Children	743	2,587

Operation Childsafe

The Dodge County Sheriff's Department has been distributing gunlocks to the public in a partnership with "Project Childsafe". Project Childsafe is funded by a grant from the U.S. Department of Justice and the National Shooting Sports Foundation, to distribute gunlocks in an effort to educate the public in the safe handling and storage of firearms.

The Sheriff's Department has been distributing 2,000 gunlocks to the citizens of Dodge County to provide them with a method for the safe storage of their firearms.

Child Passenger Safety Seat Technicians

This program began in August 2003 with the training and certification of two (2) technicians. They are qualified to assist parents with

- Determining whether or not a child safety seat meets code requirements
- Proper placement of the safety seat in their vehicle
- Proper installation of the safety seat
- Determining whether or not their child meets the requirements for using a booster seat

In 2003, the technicians conducted twenty (20) child safety seat inspections.

DODGE COUNTY SHERIFF'S DEPARTMENT FUTURE NEEDS 2005 - 2006

A. Personnel

1. Patrol Division

Increase Patrol Division by four. One of the Patrols positions are currently funded by the Criminal Investigation Division. The department would like to transfer that position and funding back to the CI Division to assist in their ever increasing work load in the area of sexual assault/abuse. An increase of four positions will actually only increase the Patrol Division by three. In 2003 we validated that an increase in Patrol visibility/efforts/enforcement has a direct correlation with traffic injuries and deaths.

2. Communications Division

One E911 Center Manager to oversee the twelve Communications Officers. Currently, the Sergeant not only has direct supervision but also is a scheduled CO so the ability to supervise all three shifts is hindered. The intent is to create a management level position that would not fill a CO position.

3. Criminal Investigation Division

Transfer the position currently in the Patrol Division back to the CI Division.

4. Administrative Support

The department is in need of an additional Administrative Support person. This position would augment the work load of the current staff in the areas of purchase orders, dictation and UCR reporting.

5. Dodge County Detention Facility

The additional of a Jail Supervisor and two Correctional Officers for the Programs Department. The jail programs have greatly expanded and are experiencing tremendous success and we want to capitalize on that. We also see the need for a 20-hour per week Mental Health Counselor.

6. Sheriff's Administration

The addition of an Administrative Lieutenant required to oversee the Warrants, Civil Process, Transport and Administrative Support Divisions. This position would also have responsibility to conduct Sheriff's sales, handle walk-ins, and monitor department programs.

B. Capitol Improvement/Equipment

1. Non-lethal force
 - i. Bean Bag capability
 - ii. Tazers
 - iii. Increase in simmunitions
2. Mobile Data Computers
3. Upgrade current duty weapons from 9mm to .45's
4. Upgrade of Tiburon software package
5. Purchase of Water Safety & Rescue vehicle & equipment
6. K9 Unit
7. Motor Cycle Program
8. Software for data base collection and storage of intelligence information
9. Laptop computers for all Detectives