



Deputy Andrew Rolfs



Communications Officer  
Suzanne Reissmann



Deputy Joseph Nicholas



Communications Officer  
Nicole Stromski



Correctional Officer  
Martin Ryan



Communications Officer  
Michelle Weber



Communications Officer  
Vanessa Schaefer



Deputy Bradley Vinje



Communications Officer  
Ashley Teschner



Correctional Officer  
Matthew Bublitz

# Dodge County Sheriff's Department



DCELEA Support Person of the Year  
Sergeant Jaime Buelter



DCELEA Officer of the Year  
Sergeant David Weninger

# 2007 Annual Report

# OFFICE OF DODGE COUNTY SHERIFF



TODD M. NEHLS  
*Sheriff*

BLAINE LAUERSDORF  
*Chief Deputy*

Dear Reader:

It is with great pride that I provide you with the 2007 Annual Report of the Dodge County Sheriff's Dept. It has been another great year for the department and its entire staff. The department has worked diligently in every area of the department and more importantly, in complete cooperation with our local law enforcement partners.

The Dodge County Detention Facility is providing a great service in its ability to safely secure hundreds of federal inmates daily and annually generating almost \$8 million for our county general fund. We have enhanced the Patrol Divisions abilities by incorporating state-of-the-art video systems and Mobile Data Computers (MDC's). These efforts have provided a significant increase in both safety and productivity. These enhancements were made possible through the support of the Dodge County Law Enforcement Committee and the County Board.

The Criminal Investigation Division continues to experience a significant increase in cases. The CI Division works as a team and in support of local LE. Major cases in 2007 included a huge burglary ring, the Charter Raceway arson and the arson/homicide in Horicon. The Drug Unit is currently experiencing a very productive year with a 200% increase in drug cases and arrests.

Our most significant effort has been the successful consolidation of the Beaver Dam Police Department dispatch services into the Dodge County E911 Center. The E911 Center and staff are dedicated to providing the best emergency dispatch service available. Their dedication and willingness to take on additional responsibility is commendable.

The administrative staff, civil process, transport, and court security efforts remain focused, busy, and in constant support of the departments overall mission.

Each and every department head is focused, and has established both short and long-term goals for their division. We will use these goals as a foundation for our future initiatives include consolidation, contract law enforcement, and centralized records. We MUST continue to use technology to our advantage. The Dodge County IT Department has been very accommodating and I would like to recognize their efforts.

I am very proud of the Sheriff's Department Administration, each and every staff member and employee. We have aggressively traveled the county, provided dozens of lectures, speeches and exhibits to our customers. The message from the citizens is clear – "Keep up the great work. We are proud of the advances made to date. Don't slow down, maintain the momentum, law enforcement is important to us."

Respectfully submitted,

A handwritten signature in black ink, appearing to read 'Todd M. Nehls'.

Sheriff Todd M. Nehls

## Management and Staff

### **Sheriff Chief Deputy**

Todd M. Nehls, Fox Lake  
Blaine Lauersdorf, Rubicon

### **Jail Administrator**

Dep. Jail Administrator

Dep. Jail Administrator

Supervisor

Supervisor

Supervisor

Supervisor

Supervisor

Supervisor

Supervisor

Supervisor

Corporals

Rodney Kreitzman, Beaver Dam

Thomas Polsin, Lowell

Kevin Hill, Juneau

Dawn Smack, Beaver Dam

Rick Gempler, Beaver Dam

Scott Smith, Beaver Dam

Mark Schwartz, Watertown

Aaron Ellis, Mayville

Mark Born, Beaver Dam

Jason Hundt, Hustisford

Chad Riter, Waupun

Aaron Potratz - Waupun, Brenda

Pieper, Scott Buckner, Michael

Harmsen, Gwyn Meyer, Linda

Thieme, Jim Brace, Mark Goetsch -

Beaver Dam, Jason Polsin, Lowell,

Arthur Elsner, Hustisford

### **Patrol Captain**

Patrol Lieutenant

Sergeant

Corporal

Patrol Lieutenant

Sergeant

Corporal

Patrol Lieutenant

Sergeant

Corporal

Maureen Soblewski, Burnett

Trace Frost, Burnett

Stephen Allerman, Juneau

Dean Hopp, Waupun

Douglas Ninmann, Burnett

James Ketchum, Juneau

Dennis Walston, Mayville

Anthony Brugger, Clyman

David Weninger, Juneau

Vacant

### **Lieutenant of Detectives**

Joanne Swyers, Beaver Dam

### **Director of Communications**

Sergeant

Sergeant

Patricia Ninmann, Burnett

Jaime Buelter, Juneau

Christine Churchill, Mayville

## Law Enforcement Committee

Chairman Kenneth Neumann

Supervisor James Layman

Supervisor Ernest Borchardt

Supervisor Jeff Schmitt

Supervisor MaryAnn Miller

District #9

District #31

District #19

District #10

District #1

---

# History of Dodge County Sheriff's Department

- The Dodge County Motor Police was organized in 1924 with a two-man force. They patrolled the highways on motorcycles, and were hired during the summer months only, from April 15<sup>th</sup> to November 15<sup>th</sup>. The purpose for this patrol was to enforce motor vehicle regulations. The officers were deputized to assist the Sheriff's Department also.
  - Beginning 1929, the officers worked 12 months out of the year, using their private cars during inclement weather. They patrolled from 9:00 am until 9:00 pm, and were on call during the remainder of the hours.
  - After 1936, the County Police discontinued using motorcycles due to the accidental death of three officers (Lisko, Theisen and Bentz).
  - In 1938, The County Police equipped their cars with radios. Prior to the radios, officers would call in by phone to get assignments and to find out if any accident had occurred.
  - In 1949, officers started patrolling 24 hours per day. This was also the start of County owned squad cars.
  - The department grew from two officers, one small room for radio dispatches and one room for traffic officers to a new building in 1959, then to the Sheriff's living quarters that had been renovated. Between 1976 and 1977, the Traffic Department moved to the ground floor of the courthouse, which is currently the Administration building, while the 1890 jail building was torn down and the Law Enforcement and Detention Center was being built.
  - Effective January 1<sup>st</sup> 1981, the Dodge County Police Department merged with the Sheriff's Department to form the Dodge County Sheriff Department. This ended the 56 years of separate entities.
  - Groundbreaking for the Legal Services Building began on May 31, 1984, and construction was completed in 1985. This new building housed the courts for Dodge County, along with the offices and agencies serving and dealing with the courts until 2000 when a new Criminal Justice Facility was constructed along with the Detention Facility. In 2005, the Legal Services Building was remodeled and became the new home of the Dodge County Sheriff Department.
  - The last of our transitions occurred in 2006, with the conversion of the Law Enforcement Center into a housing facility for Huber inmates.
  - Today, 2008, the Dodge County Sheriff Department has 180+ dedicated employees who work in state of the art facilities, which are not limited to buildings, but includes our vehicles on the street.
-



# How far we have come....



1937 - Al Gurske-used own vehicle to patrol county roads.



1958 - Kaisen Klink



1949 - Sheriff Avery Canniff and Eugene Miller



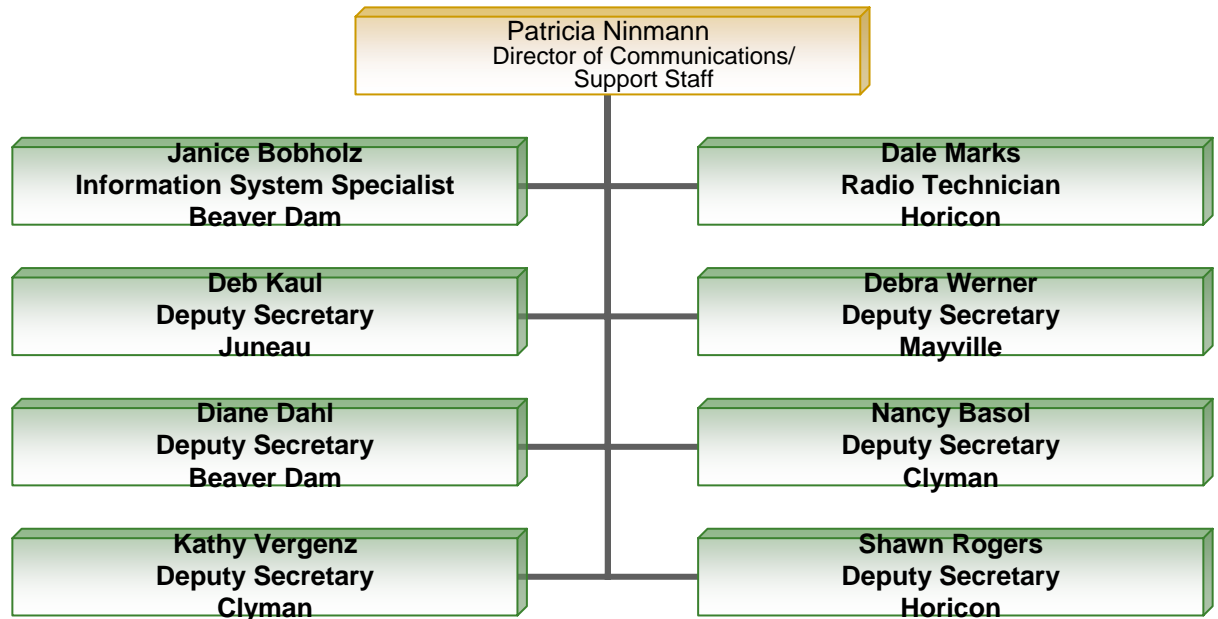
1949 - John Leder w/1<sup>st</sup> County Squad



2008 - Mobile Data Computers; Digital Video; P25 Compliant Radios, Printers  
State of Art Squads



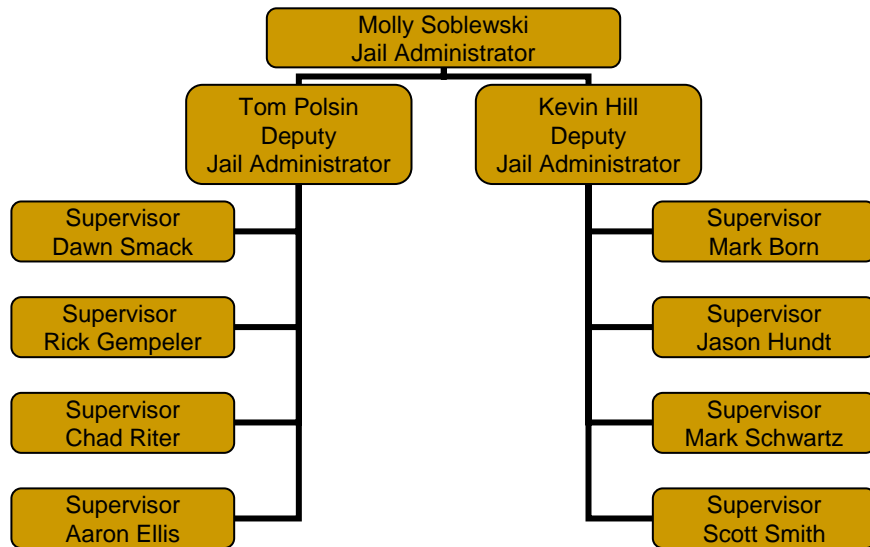
# Support Staff



## RESPONSIBILITIES:

- Update of software applications utilized by corrections, patrol, communications.
- Maintenance of radio equipment in Communications Center, towers, and squad cars.
- Transcription of all dictations – over 684 hours in 2007.
- Answering of administrative calls, Monday – Friday, 8-4p. Total of 21,011 in one year.
- Accounts receivable/payable.
- Evidence clerk and assisting with detective division.
- Entry of all citations and accident reports.
- UCR/NIBRS reporting.

# Dodge County Detention Facility



- Corporals: James Brace, Scott Buckner, Arthur Elsner, Mark Goetsch, Michael Harmsen, Gwyn Meyer, Brenda Pieper, Jason Polsin, Aaron Potratz, Linda Thieme
- First shift officers: Jodi Apel, Sandra Arneson, Donald Davidson, David Gabel, David Gorst, Peggy Harkins, Stacy Hasenstab, Kevin Kluck, Curtis Knoll, Nicole Krentz, Donald Krueger, Robert Kucharski, Clint Leidolf, Clara Marx, Carmen Micale, Hannelore Mueller, Michele Pieper, Karla Planasch, Michele Reinwald, Carla Schultz, Kevin Schultz, Kristin Streekstra, Melissa Watkins
- Second shift officers: Debra Anderson, Carole Baker, Dustin Beck, Stephanie Chavez, Paul Coopman, Laurie Covington, Denise Donegon, Michael Garbalagtys, Brian Harkins, Mark Ketter, Bradley Knoll, Brian Koch, Matthew Marvin, William Miller, Dale Oestreich, Duane Olbinski, Kyle Opetz, Rachel Parish, James Rhode, Stacy Ronge, Nicole Seitz, Lana Stelter, Daniel Watkins, Michael Willmann, Rose Zangl
- Third shift officers: David Churchill, Jodi Coda, David Hagen, Bruce Harned, Nicholas Hraban, Marcus Kirchoff, Samantha Laughlin, Daniel Mullin, David Owens, Benjamin Schepp, Darrel Schlieve, Anna Schmidt, Joseph Vukovich, Jennifer Welch, Kasey Young, Lisa Zuelsdorf, Sandra Zuelsdorf
- Programs officers: Nicole Hansen, Chris Myers, Jeffrey Schlegel, Jay Westhuis
- Deputy secretaries: Annette Duckett, Arla Folbrecht, Pamela Grosskopf

# Bookings

Age			
<18		39	0.63%
18-25		2057	33.01%
26-40		2911	46.71%
41-60		1176	18.87%
>60		49	0.79%
Total		6232	

Ethnicity		
Hispanic	2257	36.22%
Non-Hispanic	3975	63.78%
Total	6232	

Gender		
Male	5476	87.87%
Female	756	12.13%
Total	6232	

TRENDS	2003	2004	2005	2006	2007
Male	5008	4487	4127	4620	5476
Female	669	650	672	776	756
Total	5677	5137	4799	5396	6232



## Booking Statistics continued

Type		
City	<b>69</b>	<b>1.11%</b>
Contract	<b>227</b>	<b>3.64%</b>
County	<b>2801</b>	<b>44.95%</b>
Federal Bureau of Prisons	<b>9</b>	<b>0.14%</b>
Federal	<b>281</b>	<b>4.51%</b>
Immigration	<b>2179</b>	<b>34.96%</b>
Other	<b>168</b>	<b>2.70%</b>
Probation	<b>489</b>	<b>7.85%</b>
State	<b>0</b>	<b>0.00%</b>
Trans In	<b>9</b>	<b>0.14%</b>
Total	<b>6232</b>	

# Average Length of Stay

Type	Average Days
City	9.05
Contract	41.04
County	28.47
FBOP	17.33
Federal	101.83
Immigration	23.48
Other	9.16
Probation	11.89
State	N/A
Trans In	43.11



- GPS, or electronic monitoring, is regularly used as an alternative to incarceration. In 2007, 157 people were placed on GPS for a total of 7895 days.
- At the current daily rate, this saved the county \$535,754.70. The average time in the program is 50.3 days.

# Direct Supervision



- After years of political debate, the State enacted a bill requiring jails to follow a classification model. The classification system in place at our detention facility has been used as a model for many other counties in Wisconsin. We are considered to be a **leader** in development and implementation of a usable system. Classification dictates the separation of groups of people who are incarcerated. It takes into account the sex of the person, whether they have been convicted, if they have a previous criminal history, and what the current charges are. Other factors may influence decisions as information becomes available such as behavior in other detention facilities.
- Classification ranking can then be adjusted over time based on the inmates' behavior while at our facility. Each phase of the system is then attached to a variety of privileges. The picture above shows a direct supervision pod which is the most desirable housing unit in the facility. Each inmate's classification phase is reviewed systematically and a program officer determines any changes. Noncompliant behavior and rule violations prompt additional reviews and may result in lowering an inmate's current phase.

## Meals Served

- Meals are prepared and served under the direction of a contracted food service manager. The current cost per meal is \$1.26. Two hot meals are served daily along with a cold breakfast. Average daily calorie intake is approximately 2650. The majority of the preparation and service is completed by inmate labor. This crew is also tasked with general kitchen clean-up and dish washing.

2004	<b>418,528</b>	
2005	<b>474,749</b>	
2006	<b>482,738</b>	
2007	<b>526,875</b>	
<b>TOTAL</b>	<b>4 years</b>	<b>1,902,890</b>



---

# Automated Fingerprints



- In 2007 our Identix live scan fingerprinting system received a substantial upgrade. This system allows fingerprints to be taken without the use of ink. They can then be electronically transferred to State and Federal data collection centers. These centers use the data in comparison analysis for a variety of law enforcement needs.
-



# Transport

<b>2007</b>	<b>Miles</b>	<b>Trips</b>	<b>Total Miles</b>
<b>USMS Milwaukee</b>	124	412	51088
<b>USMS Madison</b>	105	62	6510
<b>USMS Chicago</b>	322	80	25760
<b>Immigration</b>	299	984	294216
<b>Total</b>		1538	<b>377574</b>

	<b>Trips</b>	<b>Miles</b>
<b>2004</b>	1164	254,012
<b>2005</b>	1345	275,187
<b>2006</b>	1499	344,239
<b>2007</b>	1538	377,574



# Programs

	Participants	Events
Alcoholic Anonymous	185	754
Anger Management	35	338
Bible Study	253	1575
Carwash	37	814
Catholic Bible Study	184	742
Christian Worship	325	1466
English as a Second Language	191	1146
ESL Tutor	1	35
Female Bible Study	40	199
GED	50	1128
GED Tutor	7	39
Home Monitor	218	
Jumah Service	0	0
Kitchen Worker	53	2953
Laundry Worker	17	1218
Library Worker	2	5
Pod Worker	104	2930
Spanish Bible Study	311	1140
Work Crew	80	1395
Other	85	525

## Programs continued...

Education	Participants	Events
ESL	73	1251
GED	50	1128

Religious		
Bible Study	264	1463
Catholic Bible Study	156	630
Christian Worship	260	1140
Female Bible Study	40	120
Jumah Service	0	0
Spanish Bible Study	211	1084

Inmate Work		
Carwash	40	834
ESL Tutor	4	51
GED Tutor	2	17
Kitchen Worker	60	3376
Laundry Worker	16	1434
Library Worker	1	1
Pod Worker	77	2851
Work Crew	80	1395
Sewing	4	83
Other	85	525

## Medical Services

	<b>2004</b>	<b>2005</b>	<b>2006</b>	<b>2007</b>
<b>Doctor Visits</b>	<b>430</b>	<b>565</b>	<b>666</b>	<b>323</b>
<b>Nurse Practitioner</b>	<b>532</b>	<b>434</b>	<b>483</b>	<b>417</b>
<b>Nurse sick calls</b>	<b>1206</b>	<b>1407</b>	<b>1252</b>	<b>3489</b>
<b>Grievances</b>	<b>76</b>	<b>116</b>	<b>150</b>	<b>72</b>
<b>TB shots</b>	<b>1386</b>	<b>1493</b>	<b>1780</b>	<b>2613</b>
<b>Chest X-rays</b>	<b>313</b>	<b>227</b>	<b>136</b>	<b>346</b>
<b>Dental visits</b>	<b>78</b>	<b>59</b>	<b>75</b>	<b>64</b>
<b>Health transfers</b>	<b>1850</b>	<b>1820</b>	<b>2347</b>	<b>3729</b>
<b>Totals</b>	<b>5,871</b>	<b>6,121</b>	<b>6,889</b>	<b>11,053</b>

# What's News.....



- 2005 was the first year the Sheriff's Department maintained a garden as one of our inmate labor programs. The first year saw a profit of \$358.00. In 2007 the profit increased to \$583.00. All produce from the garden is used in the jail kitchen as a portion of inmate meals. Each spring the kitchen manager provides us with a list of vegetables they feel will be useful in meal preparations.
- With a donation from Aramark, our food service provider, we were able to construct a greenhouse adjacent to the garden plots. This will allow for plants to be grown from seed rather than purchasing seedlings at a substantial cost. It is hoped that the greenhouse will also be utilized to produce flowers for county buildings. This program provides jobs for 2 inmate labor workers from May through October.



# Video Conferencing

- In 2007, 2 systems were put in place to allow for video conferencing with federal agencies. The first system allows for immigration detainees to contact the Midwest Immigration Rights Counsel. This has significantly increased the ability of detainees to obtain information about their immigration status.
- The second system allows for certain court appearances to be held without the time and expense of transportation to the Federal Court in Chicago. The system is linked directly to the courtroom and allows for appearances in real time, along with the ability for the detainee to have counsel present if desired. All equipment was paid for by the federal government through an application process.



## Inmate labor

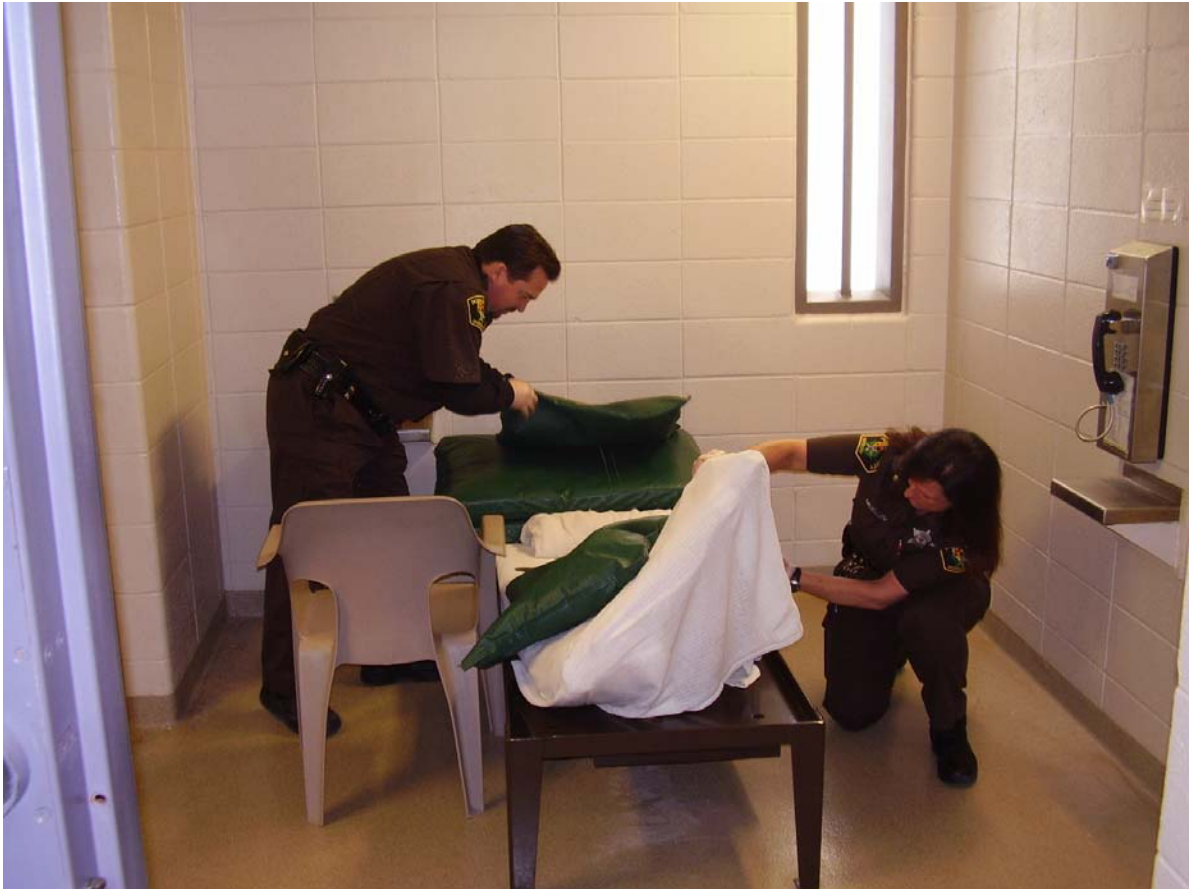
- Under the supervision of CO Sandy Arneson, inmate labor workers mend clothing articles used in the facility. Inmates are trained in the use of single and multiple needle sewing machines. Clothing that previously was repaired by an outside source is now fixed by inmates who have completed the required training.
- Along with the mending, the program also produces food trap covers for the cell doors and game bags for the dayrooms. Recently, the workers began sewing identification tags into the thermal underwear purchased by inmates at the facility. This has nearly eliminated distribution problems with personal property.



Saved Items	Pants	Shirts	Blankets	Mattress Covers	Sheets	Towels
Total	345	344	116	265	21	1
Unit Price	\$7.44	\$6.14	\$6.08	\$6.20	\$3.25	\$1.05
Savings	\$2,566	\$2,112	\$705	\$1,643	\$68	\$1
<b>Total Savings</b>	<b>\$7,095</b>					

## Search Team

- Contraband is, and will continue to be, a source of concern at any detention facility. To combat this problem, we have correctional officers who have agreed to work additional hours where their sole focus is searching for contraband. By definition, contraband is “any illegal or prohibited item, or any item being used for something other than its intended purpose.”
- Officers on the search team have logged many hours gaining expertise in this area. Besides routine cell checks, they may be assigned to common areas such as the dayrooms and recreation areas. They also provide unscheduled inspections of inmate work in the kitchen, laundry, and programs. All items of contraband are seized and disposed of according to department policy.



---

# C.E.R.T.

- The Corrections Emergency Response Team (CERT), is a group of highly trained and motivated officers who are called, much like a SWAT Team, to deal with volatile situations in the jail. The current members of the Team are:  
Don Davidson-Team Leader, Kevin Schultz –Assistant Team Leader, Carmen Micale, Kevin Kluck, Dave Gabel, Dustin Beck, Dan Watkins, Scott Buckner, Dan Mullin, Jason Polsin, Duane Olbinski, Aaron Potratz, and Mike Willmann.
- The Team is commanded by DJA Kevin Hill.



## Revenues/Expenses

	2003	2004	2005	2006	2007
Revenue	\$5,821,024	\$7,028,380	\$8,187,677	\$7,956,005	\$8,848,001
Expenses	\$6,809,500	\$7,497,151	\$7,547,105	\$8,286,189	\$8,534,408
Net Levy	-\$1,648,786	-\$ 468,771	+\$ 650,572	- \$330,184	+\$313,593

### Summary

- The number of bookings continues to climb. This is largely based on increased efficiency of deporting illegal immigrants from the country, creating a faster turnaround on detainees.
- We continue to increase programs and alternatives to incarceration to manage our daily population and decrease recidivism.
- For the second time in history, the detention center showed a positive net levy.
- Additional training and education increases the proficiency and professionalism of the staff.
- We continue to excel in our commitment to our mission.



---

# DODGE COUNTY E-911 CENTER

## Highlights of 2007

2007 was a very exciting and busy year for the Communications Center. Credit should be given to all the dispatchers for their willingness to accept change and their patience with the City of Beaver Dam consolidation as well as the upgrade of numerous software systems within the center. Without the dedication of the dispatchers none of the below items would have been a success.

- Upgrade of Tiburon CAD system
  - Completion of Phase II Wireless
  - Consolidation with Beaver Dam Police Department and Fire Department
  - E911 Advisory Committee implemented
  - Hiring of five additional Communications Officers
  - Upgrade of Web-site
  - Intergration of MDC's w/Communications Center
  - AVL of Dodge County Squads
  - Mapping interface with Tiburon and 911 phone calls
-

**Patricia Ninmann**  
**Communications Director**

**Sergeant Jaime Buelter**  
**Juneau**

**Sergeant Chris Churchill**  
**Mayville**

**DAY SHIFT**  
**Communication Officers**

**Lee Schneider**  
**Horicon**

**Barbara Mullin**  
**Lowell**

**Peter Kaczmariski**  
**Waupun**

**Cheryl Kotek**  
**Beaver Dam**

**David Zirbel**  
**Mayville**

**SECOND SHIFT**  
**Communication Officers**

**Vicki Schmid**  
**Beaver Dam**

**Suzanne Reissmann**  
**Beaver Dam**

**Nicole Stromski**  
**West Bend**

**Cheryl Sahr**  
**Juneau**

**THIRD SHIFT**  
**Communication Officers**

**Nicole Weikert**  
**Beaver Dam**

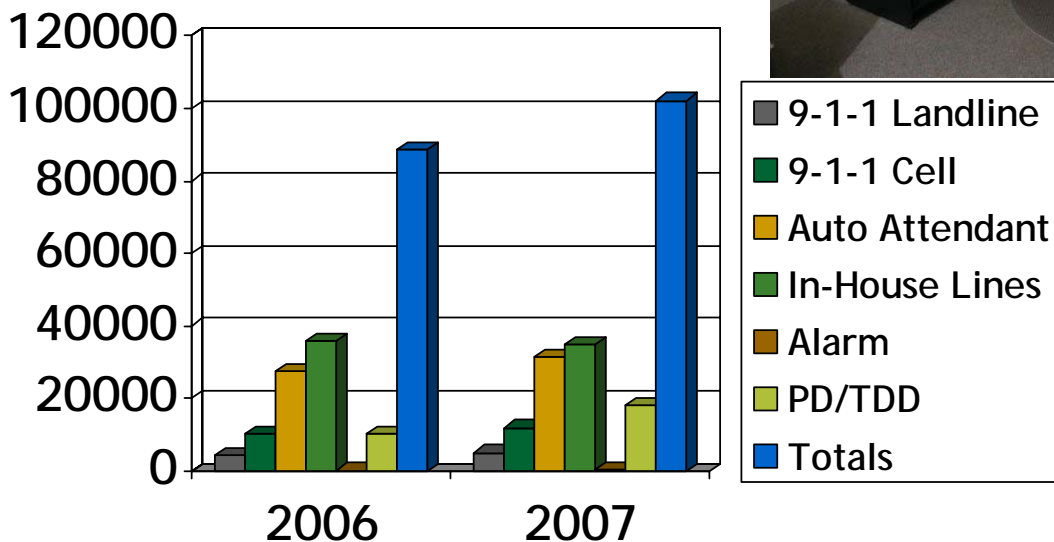
**Jeramy Grossman**  
**Fall River**

**Vanessa Schaefer**  
**Beaver Dam**

**Michelle Weber**  
**Waupun**

# 9-1-1 Phone Calls and Incoming Phone Calls

■ **TOTAL CALLS:  
102,151**

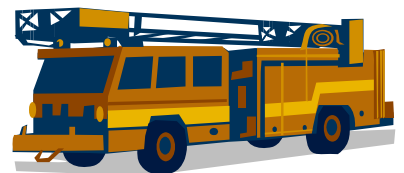


	2006	2007
9-1-1 Landline	4369	5183
9-1-1 Cell	10262	12042
Auto Attendant	27583	31440
In-House Lines	35882	34890
Alarm Line	191	543
Police / TDD	10397	18053
<b>TOTALS</b>	<b>88684</b>	<b>102151</b>

---

# Calls For Service 2007

■ Dodge County	39,227
■ Police Departments	30,183
■ Fire Departments	480
■ EMS/First Responder Units	<u>3,096</u>
■ TOTAL:	<b>72,986</b>



# 5 Year Comparable

**39% increase in  
activity from 2006**

	2003	2004	2005	2006	2007
Sheriff's Department	22,072	21,859	21,750	26,659	39,227
Police Departments	13,311	14,082	16,903	22,117	30,183
Fire Departments	815	685	702	654	480
EMS/ First Responder Units	3,859	3,441	3,008	3,045	3,096



# Calls by Reporting District: Law Enforcement

DEPARTMENT	2003	2004	2005	2006	2007
Twn. Beaver Dam	391	443	812	734	686
Beaver Dam	101	217	362	927	5749
Brownsville	496	413	518	347	318
Clyman	50	103	102	102	137
Dodge County	22072	21859	21750	26659	39227
Emmet/Lebanon	269	329	271	293	393
Twn. Fox Lake	216	293	332	400	250
Fox Lake	1261	1094	1280	1518	1675
Horicon	1803	1713	1627	4449	4930
Twn. Hustisford	48	12	8	24	0
Hustisford	210	214	430	562	750
Iron Ridge	192	251	520	432	416
Juneau	1136	1250	1599	2033	2816
Lomira	2030	1911	2126	2286	2355
Lowell	103	113	82	134	91
Mayville	1611	1800	1774	1874	2544
Neosho/Rubicon/Ashippun	464	621	596	795	870
Other	75	202	383	1045	1862
Randolph	902	912	1066	1182	1241
Reeseville	248	288	494	385	310
Theresa	1108	1322	1315	1706	1739
State Patrol	527	545	1159	889	1051
<b>TOTAL:</b>	<b>35313</b>	<b>35905</b>	<b>38606</b>	<b>48776</b>	<b>69410</b>

# Calls by Reporting District: Fire Units

DEPARTMENT	2003	2004	2005	2006	2007
ALLENTON	4	5	3	4	4
ASHIPPUN	61	51	45	48	34
BEAVER DAM	88	79	92	95	99
BROWNSVILLE	29	28	22	29	26
BURNETT	27	26	6	8	7
CLYMAN	23	21	16	16	10
COLUMBUS	26	17	16	27	12
FOX LAKE	26	22	31	25	19
HARTFORD	17	11	18	20	5
HORICON	36	36	25	31	19
HUSTISFORD	29	24	23	13	11
IRON RIDGE	33	29	35	26	12
JUNEAU	45	42	30	28	25
KEKOSKEE	12	15	19	17	10
KNOWLES	6	11	9	12	8
LEBANON	45	36	34	20	16
LOMIRA	54	39	47	26	26
LOWELL	3	3	4	1	5
MAYVILLE	31	33	32	27	15
NEOSHO	11	18	17	10	12
RANDOLPH	36	27	34	31	24
REESEVILLE	26	17	30	21	19
THERESA	36	29	26	36	23
WATERLOO	16	11	13	4	2
WATERTOWN	40	16	26	22	14
WAUPUN	24	13	16	23	8
WOODLAND	31	26	33	21	15
<b>TOTALS:</b>	<b>815</b>	<b>685</b>	<b>702</b>	<b>654</b>	<b>480</b>

# Calls By Reporting District: EMS/First Responder Units

DEPARTMENT	2003	2004	2005	2006	2007
ALLENTON EMS	5	5	3	8	7
ASHIPPUN FRU	53	85	77	88	66
BEAVER DAM EMS	246	301	288	285	1011
BROOKS EMS	30	54	63	53	37
BROWNSVILLE FRU	60	75	66	69	59
BURNETT FRU	23	18	16	23	29
CAMPBELLSPORT FRU	12	2	6	9	0
CLYMAN FRU	30	44	26	30	22
COLUMBUS EMS	35	37	40	37	25
FOND DU LAC EMS	30	80	45	40	25
FOX LAKE EMS	143	144	107	102	114
HARTFORD EMS	141	238	134	111	61
HORICON EMS	400	389	340	362	328
HUSTISFORD FRU	85	79	95	89	56
IRON RIDGE FRU	73	78	84	77	56
JUNEAU EMS	348	343	331	403	296
KEKOSKEE FRU	46	33	57	40	30
LEBANON EMS	114	201	128	126	72
LOMIRA FRU	126	98	97	123	68
LOWELL FRU	20	22	26	16	13
MAYVILLE EMS	456	511	456	425	309
NEOSHO FRU	51	61	51	52	35
OCONOMOWOC EMS	32	77	37	45	28
RANDOLPH EMS	153	172	130	138	122
REESEVILLE FRU	76	32	39	34	28
STONE BANK EMS	2	18	24	18	14
THERESA EMS	177	162	156	176	122
WATERLOO EMS	29	18	20	9	13
WATERTOWN EMS	59	64	66	73	50
<b>TOTAL:</b>	<b>3055</b>	<b>3441</b>	<b>3008</b>	<b>3045</b>	<b>3096</b>

# Website Activity Requests - 2007

	<b>2007</b>
<b>Crime Tips</b>	1,793
<b>Traffic Concerns</b>	1,930
<b>Surveys</b>	1,491
<b>Warrant Tips</b>	975
<b>Warrants</b>	10,653
<b>Sheriff Sales</b>	11,262
<b>Total Pages Visited</b>	74,885

New pages added to web-site in 2007:

Most Wanted

Explorer Program

Communications Center

Car Seat Requests

*In 2008 we hope to continue to add to our web-site to include additional information regarding the programs that are offered.*

*We also hope to incorporate a "blog" as well as additional interactive items for the youth of Dodge County.*

# Warrants

Year	Warrants Entered	Warrants Cancelled
2003	1,766	1,466
2004	1,649	1,631
2005	1,539	1,658
2006	1,383	1,475
2007	1,189	1,246



# Civil Process

	2003	2004	2005	2006	2007
<b>Writs of Excutions</b>					
Excutions Handled	20	16	20	22	30
Excutions Unsatisfied	3	2	3	0	0
Satisfactory Arrangements Made	17	14	12	17	10
Seized Vehicles	9	0	3	0	15
Seized Mobile Homes	4	2	1	11	1
Seized Boat-Motor-Trailer-Snowmobile-ATV	7	3	1	51	4
Out of County	0	0	0	1	0
Number pending	0	0	0	0	0
<b>Writs of Assistance</b>					
Writs Handled	6	19	25	20	40
Returned Atty's Request	2	2	0	3	0
Seized Boat-Motor-Trailer	0	0	0	0	0
Seized Vehicles	1	0	0	0	0
Seized Business Equipment	2	75	0		5
Residence	0	16	24	12	30
Mobile Homes	1	0	1	3	5
Not found	0	0	0	2	0
<b>Writs of Restitution</b>					
Writs Handled	112	115	152	182	210
Evictions	112	115	152	182	210
<b>Writs of Replevin</b>					
Writs Handled	70	63	75	51	80
Returned Per Atty/Out of County	17	5	4	4	1
Seized Personal Property					
To Include: Autos, Semis, Boats	40	40	60	46	60
Mobile Homes, Motor Homes	3	3	1		8
Motorcycles, Shop Tools	8	5	4		6
Farm Machinery	20	10	6		0
Cattle	19 head	28 head	0		0
Not Found	0	0	0	1	5
<b>Writs of Capias</b>					
Writs Handled	0	0	0	0	0



---

# **CRIMINAL INVESTIGATION DIVISION**

## **DRUG TASK FORCE/EVIDENCE UNIT**

**Lt. Jo Anne Swyers - Supervisor**

**GENERAL INVESTIGATIONS**

**Det. Vickie Brugger**

**Det. Brian Drumm**

**Det. Robert Neuman**

**Det. Michael Reissmann**

**Det. James Rohr**

**Det. Daniel Stiemsma**

**DRUG TASK FORCE**

**Det. Brian Prieve**

**Dep. Kevin Day**

**Dep. Jeff Meyer**

- Local news headlines reflect the major investigations conducted by the Criminal Investigative Division in 2007 -
  - Sherry Asbury homicide
  - Charter Raceway arson
  - Laura Babe homicide and arson
  - Vending machine theft ring
  - Hostage situation at Waupun Correctional Institution
- The Criminal Investigative Division conducted 620 investigations in 2007. Eighty-six of these investigations involved crimes against children, 57 identify theft fraud, and 137 prison investigations. Thirty-one prison deaths investigations were conducted, an increase of 155 % from 2006. Fifteen non-prison death investigations were conducted (up from 8 in 2006) and 26% of these 15 deaths involved prescription drugs.
- The Criminal Investigative Division's analysis of criminal activity indicates that prescription drug diversion is one of the fastest growing issues in Dodge County. Prescription drug diversion is also causing an increase in collateral crimes such as burglary, theft, fraud, assault, and deaths. A proactive program was developed and implemented to address this emerging threat. This program began by training 41 local law enforcement officers in Basic Drug Investigation and is being augmented by the Dodge County Sheriff Patrol Division's efforts in Drug Recognition and Drug Interdiction programs and enforcement. A partnership was developed with the District Attorney, Medical Examiner, the Dodge County Medical Association, Beaver Dam Community Hospital, and area pharmacies to jointly address diversion issues and prevention methods. Diversion prevention training was provided for 70 law enforcement officials and 40 medical professionals. Det. Brian Drumm joined the Drug Task Force to spearhead prescription drug diversion investigations and public education programs.

-continued-

---

---

# CRIMINAL INVESTIGATION DIVISION DRUG TASK FORCE/EVIDENCE UNIT

-continued-

- The Drug Task Force is strong and proactive as the 11 local law enforcement agency members continue in their commitment to combating drugs in Dodge County. Task Force Leader, Det. Brian Prieve coordinates the exchange of intelligence information, manpower and equipment with other agencies to maximize enforcement efforts. The Drug Task Force made 179 arrests, including 35 prescription drug related arrests in 2007. The Task Force shut down 2 methamphetamine laboratories, one located inside a motel. Crack cocaine arrests increased almost 200% from 2006.
- Goals for 2008 include conversion to an electronic evidence system, combating identity theft, and targeting higher level drug dealers. The Criminal Investigative Division will continue to monitor changing threats to the citizens of Dodge County in order to be prepared and proactive in the prevention, response and investigation of criminal activity.

## PRESCRIPTION DRUG ARRESTS:

■	2007	35
■	2006	18
■	2005	15
■	2004	2
■	2003	2
■	2002	3
■	2001	No Data
■	2000	1
■	1999	3
■	1998	0

# Criminal Investigation Division-

## Clearance Rates

### CLEARANCE RATES 2005

Type of Crime	Number	Solved	Percentage	
Murder	0	n/a	n/a	100% Violent Crime Clearance
Forcible Rape	3	3	100	
Robbery	3	n/a	n/a	
Aggravated Assault	18	18	100	
Burglary	75	20	20	45.2% Property Crime Clearance
Theft	140	32	22.8	
Motor Vehicle Theft	21	8	38	
Arson	1	1	100	

### CLEARANCE RATES 2006

Type of Crime	Number	Solved	Percentage	
Murder	1	1	100	81% Violent Crime Clearance
Forcible Rape	7	5	71	
Robbery	6	3	50	
Aggravated Assault	23	21	91	
Burglary	117	27	23	18% Property Crime Clearance
Theft	154	16	10	
Motor Vehicle Theft	15	9	60	
Arson	2	1	50	

### CLEARANCE RATES 2007

Type of Crime	Number	Solved	Percentage	
Murder	1	1	100	94% Violent Crime Clearance
Forcible Rape	4	4	100	
Robbery	0	0	N/A	
Aggravated Assault	31	29	96	
Burglary	73	27	37	26% Property Crime Clearance
Theft	177	38	21	
Motor Vehicle Theft	16	4	25	
Arson	3	2	67	

# Criminal Investigation Division-

## 5 Year Crime Trend

	2003	2004	2005	2006	2007
<b>Violent Crimes--Total</b>	23	24	21	37	36
Murder	0	0	0	1	1
Forcible Rape	5	7	3	7	4
Robbery	3	2	0	6	0
Aggravated Assault	15	15	18	23	31
<b>Property Crimes--Total</b>	287	302	237	288	269
Burglary	108	111	75	117	73
Theft	158	169	140	154	177
Motor Vehicle Theft	20	21	21	15	16
Arson	1	1	1	2	3



# 2007 Drug Stats

## Based on OJA Entries

<b>Total Arrests</b>	<b>179</b>	( Does not including multiple charges or investigations charged in other jurisdictions ie: State, Federal, other Counties)
Misdemeanors	58	
Felonies	121	

<b>Charges Requested</b>	
Buying/Receiving	14
Cultivating/Manufacturing	5
Distributing/Selling	16
Possession w/Intent to Deliver	38
Possessing/Concealing	84
Using/Consuming	11
Pharmaceutical Diversion	4
Keeper of a Drug House	7

<b>Drug Type</b>		<b>Largest Seizure</b>
Crack Cocaine	11	83 grams
Cocaine	20	55 grams
Heroin	1	trace
Marijuana	107	6407 grams
Marijuana Plants	3	15 plants
Morphine	3	6 mil liters
Other Narcotics	22	60 dosage units
Methadone	7	31 dosage units
Methamphetamine	2	8 grams
Other Prescription Drugs	4	60 dosage units
Psilocybin Mushrooms	3	27 grams
Ecstasy	1	30 dosage units
Oxycontin	3	40 dosage units

<b>Arrests</b>		<b><u>Prior Drug History</u></b>	
		Yes	No
Males	145	70	75
Female	34	13	21

(Based on these numbers 46% of the arrests were repeat offenders)



# Patrol Division

Captain Rodney Kreitzman

- The patrol division saw several personnel changes in 2007. New deputies include; Joseph Nicholas, Andrew Rolfs, and Brad Vinje.
- 2007 was a significant year for the patrol division. Several events took place for the first time in the history of the division. A deputy was identified and assigned to the first full time recreation officer position in the division.
- Also for the first time in the division's history, mobile data computers, (MDCs) were installed in squads and used by the deputies. While Dodge County was one of the last agencies of it's size in the state to use some form of MDC, in a squad car, the wait was worth it. Deputies now have the ability to run license plate checks and driver's license checks from the squad car. In many cases a deputy can receive the information back from the department of transportation faster than if this information was run through the communications center. In addition to accessing the department of transportation data base, deputies can also access the sheriff's department information management system. Accessing this system puts more information in the deputy's hands on the street providing him or her with what is sometimes crucial information to the complaint they are investigating. The MDC is also used by the communication's center for dispatching non-emergency calls and for sending sensitive information out to the deputies. The many capabilities of the MDC also allows the deputies to perform officer related tasks in the squad car. The result of this capability is having more officers out on patrol and less down time at the station.
- Another first for the patrol division was installation of mobile digital video data recorder, (VDR) cameras in the squad cars. Half of the patrol division fleet was outfitted with these systems near the end of the year. These VDR systems can be activated in a number of ways, including by activation of the squads emergency lights. Many of the deputy's activities are now recorded. There are many advantages to having these video data recordings. The recordings aid the deputy as a resource when completing their reports and for preparing for court. Recordings are also used by prosecutors as evidence during court proceedings and often times result in a higher conviction rate or settlement of a case before it goes to trial. Recordings also provide administrators with an accurate resource when responding to citizen complaints about deputies. Finally, recordings are often used successfully in defense of liability claims made against the department resulting in further cost savings for the county.

-continued-



---

# Patrol Division

(continued)

- In 2007 the patrol division took delivery of the remaining 2 Chevrolet Tahoes. Each of the three sergeants are assigned to a Tahoe. These vehicles not only serve as the sergeant's patrol vehicle, but also have the versatility to be used as a temporary mobile command post. The division took delivery of the first of these vehicles in 2006.
  - Dodge County did not qualify for any grants in 2007. Near the end of the year, the sheriff's department learned that it would be eligible for several grants in 2008. As of this writing the sheriff's department was notified that it would be receiving several of these grants for 2008.
  - Also ahead for 2008 will be the completion of outfitting the rest of the patrol division fleet with mobile digital video cameras. The patrol division will also be exploring the use of TRACS. TRACS is a state system that allows the deputy to electronically file traffic citation information and accident information with the state through the use of the MDC. Use of the TRACS system will result in cost saving to the patrol division by freeing up the time used by a support person to do data entry on from these citations and accident reports. The use of this technology may also result in cost savings for the clerk of courts office.
  - The patrol division will be sending several deputies to accident reconstruction training in 2008. This course is very math intensive working with energy, mass, weight and speed formulas. Upon successful completion of the course the deputies will become certified in accident reconstruction and will lay the foundation for becoming an expert witness in this area for court. These certifications will add an advanced component to our accident investigation team.
  - Finally, the division will be sending 2 deputies to level 1 commercial motor vehicle inspection school at the State Patrol Academy. The two deputies are currently trained in level II inspections.
-

# 2007 Patrol Equipment

- Deputies now have the ability to run license plate checks and driver's license checks from the squad car. Deputies can also access the sheriff's department information management system. This system puts more information in the deputy's hands on the street providing him or her with what is sometimes crucial information to the complaint they are investigating. The MDC also allows the deputies to perform other computer tasks in the squad car. As a result, more officers spend more time out on patrol and less down time at the station.
- Half of the patrol division fleet was outfitted with mobile video data recorder, (VDR) cameras near the end of the year. Recordings are a resource deputies can access when completing their reports and when preparing for court. Recordings are often used by prosecutors and often times result in a higher conviction rate or settlement of a case before it goes to trial resulting in savings for the department. Recordings also provide administrators with an accurate resource when responding to citizen complaints about deputies. Finally, recordings are often used successfully in defense of liability claims made against the county resulting in further cost savings for the county.



## Calls for Service, Miles Patrolled, Deputies

	2003	2004	2005	2006	2007	% Chg	5 yr Ave.
Calls for	22,072	21,859	21,750	26,659	31,699	19%	24,808
Service							
Total Miles			785,030	806,896	799,675	-9%	797,200
Patrolled							
Average number			29	26	29	11%	28
of deputies							
Average Patrol			27070	31034	27,575	-11%	28,560
Miles Per Deputy							

## Citations

	2003	2004	2005	2006	2007	% Chg	5 yr Ave.
OWI	302	429	376	336	347	3%	358
Underage Drk.	191	233	188	197	213	8%	204
Speeding	2112	2202	1853	2155	2460	14%	2156
Safety Belt	343	385	295	403	384	-5%	362
Fail to Stop	143	158	116	118	119	0.80%	131

Citations for all categories were up for 2007 with the exception of citations for failure to fasten safety belts. In March of 2006 the division implemented a no tolerance policy for seatbelt use. This means that if you are a driver or passenger of a motor vehicle in Dodge County, are not wearing a safety belt, and have contact with a sheriff's deputy, you will be ticketed. We believe the increase of safety belt usage in the county is a direct result of the emphasis we have placed on enforcement of this law. We hope to see similar trends in the coming years across the board for 2009 as a result from enforcement grants that will be used in 2008.

## Traffic Accidents

	2003	2004	2005	2006	2007	% Chg	5 yr Ave.
# Fataals	18	11	18	15	14	-7%	15
Fatalities	19	12	22	16	14	-13%	17
Injury	239	264	289	265	255	-4%	262
Car / Deer	521	358	333	368	370	5%	390
Motorcycle	22	11	19	17	23	35%	18

Fatal traffic accidents and fatalities resulting from fatal accidents were down for the second year in a row as were injury accidents. Deputies remain highly visible in their enforcement role which plays a significant factor in the reduction of these accidents. Motorcycle accidents are up as a result of more cyclists being on the road. Motorcycle registrations are up state wide and will continue to increase with rising fuel costs.

## Civil Process Served By Deputies

	2003	2004	2005	2006	2007	% Chg	5 yr Ave.
Process Served	613	324	355	430	840	95%	512

This chart indicate civil process that are served by deputies and not by the sheriff's department full time process server. Serving civil process is the documented serving of legal papers to citizens. Types of process include but are not limited to; court summons, subpoenas, pick up orders, emergency detentions, divorce papers, notice of law suits, and evictions to name a few.



	2003	2004	2005	2006	2007	% Chg	5 yr Ave.
Events	86	77	72	100	101	1%	87
Total Hours	3760	3741	3007	4174	3873	-7%	3711
In-Service Hrs	1236	843	1003	1495	1444	-3%	1204

This chart illustrates the training events and hours the patrol division is involved in for the training of it's deputies. Total hours include in-service training hours. The patrol division by nature of it's functions, require specialized training for deputies beyond that of in-service training hours. The State of Wisconsin's Training and Standards board requires that each certified law enforcement officer receives a minimum of 24 hours of law enforcement related training every year. The patrol division has a number of deputies that are State certified instructors. These deputies provide training in 24 different areas of instruction. "In house" certified instructors allow the division to provide quality training to the entire department in a fiscally responsible manner. By providing training in the county, from these in house instructors, the department is able to avoid the additional training costs of instruction, travel, housing, and meals.

# Crash Investigation Team

	2003	2004	2005	2006	2007	% Chg	5 yr Ave.
County Crashes			26	21	24	14%	24
Hours on Scene			164	159	162	2%	162
Follow up Hours			217	230	284	23%	244
Assist Other			3	7	16	128%	9
Other Hours			11	42	129	207%	61
<b>Charges / Cits.</b>							
Homicide			2	4	3	-25%	3
Other Felony			11	4	14	250%	10
Misdemeanor			0	1	3	200%	1
County Ord.			3	11	14	27%	9
<b>Public Speaking</b>							
Public Education			10	13	11	-15%	11
Attendees			250	325	315	-3%	297
Hours			42	78	91	17%	70



The Sheriff's Department's crash investigation team is a special unit deployed to investigate major traffic crashes. The team uses state of the art laser surveying equipment and computer programs to process accident scenes and to download information recorded by a vehicle's electronic systems. The team processes this information and can reconstruct these accidents, determine the causes, and provide technical support for filing charges from these incidents. The information is also used to create exhibits that are used in criminal proceedings. With this technology and training, incidents that would have been listed as accidents in the past, can now be charged out as a criminal acts. This process now provides relief for victims, through the criminal justice system.



When the citizen's of Dodge County think of the Sheriff's Department they probably think of Deputies making traffic stops, investigating accidents, and responding to calls for service. While this is true, the patrol division of the Sheriff's Department is much more than what it is commonly perceived as. The patrol division is active in approximately 15 other programs which are in addition to a deputy's "normal" duties. The information contained on the following pages are some of the activities that deputies are involved in beyond that of their "normal" duties.

## Drug Recognition Expert Incidents

	2003	2004	2005	2006	2007	% Chg	5 yr Ave.
Incidents	42	53	23	24	23	4%	41
Hours	63	80	35	36	71	97%	71

The Sheriff's Department patrol division has been a part of the Drug Recognition Expert (DRE) program since this program was started in Wisconsin. There are currently 3 DREs in the patrol division. The division's DRE program has been a leader in the State for years with the most evaluations by an agency per year. The State reimburses the department for certain costs incurred by call out of the DRE. The DRE is subjected to an intensive training program with both class room and hands on experiences. A DRE is able to perform an examination on a person to make a determination of whether or not the person is under the influence of prescription medication or illegal drugs. The decline in incidents over the past 2 years is as a result of more agencies receiving training in this area.

## Salvage Vehicle Inspections

	2003	2004	2004	2005	2007	% Chg	5 yr Ave.
Inspections	91	234	168	377	281	-25%	230
Revenues	\$5,460	\$14,040	\$10,080	\$22,620	\$16,860	-25%	\$13,812

The division has 2 salvage vehicle inspectors who are licensed by the State of Wisconsin. The inspectors exam repaired vehicles that were previously junked or wrecked for citizens who wish to title a vehicle for resale. Upon a successful inspection, the inspectors provide required paperwork to the citizen. This paperwork is submitted to the State with an application for title. The increase in revenues and inspection is do to adding and additional inspector to conduct more inspections.

---

# Truck Enforcement and Commercial Vehicle Inspection



During the past two years Dodge County has seen a dramatic increase in truck traffic in the county. In order to properly address issues surrounding this increase, the patrol division has identified 2 deputies who are currently in the training process to handle these issues. The deputies have been trained in the inspection of log books, registration, medical certification of commercial drivers licenses and minor equipment issues such as lighting and tires.

The 2 deputies will be sent to additional training in 2008 which will allow them to conduct level 1 inspections. This level includes all types of inspections and enforcement of commercial motor vehicles up to and including; federal regulations regarding equipment and interstate commerce, as well as post crash inspections.

Each deputy must conduct 30 level 1 and level III inspections a year to retain their certification.

---



## Child Safety Seat Inspections

	2003	2004	2005	2006	2007	% Chg	5 yr Ave.
Events		3	3	5	5	0%	4
Checks		13	31	40	35	-13%	30
Hours		4	10	13	19	46%	12

The patrol division currently has 3 certified “safety seat technicians. These technicians participate in various public events throughout the county educating parents and others in the proper way to secure a child safety seat in a vehicle. The technicians also advise and educate citizens on the importance of having a child properly restrained in a safety seat. Technicians also have the ability to check the quality of the seat base on standards set by the industry. This service is provided at no cost to the public.

# Fatal Vision



Fatal vision is a program that was started in the patrol division to educate high school students about the dangers of drinking and driving. The program consists of a classroom presentation with video. The interactive part of the experience can consist of field sobriety tests and golf carts where students wear special “drunk goggles” that simulate impairment. Students attempt to maneuver the golf cart appropriately while wearing these goggles. In 2007, 7 schools and 9 organizations / civic groups were visited with over 2,500 students and others in attendance.



---

## School Presentations / Public Speaking

The patrol division regularly provides presentations to schools and other organizations on a variety of topics including drug and alcohol, stranger danger, safety, and kid IDs. In 2007, 7 schools, and 9 organizations / civic groups were visited. Those in attendance at these events numbered over 2500.



The sheriff's department honor guard continues to be active in both memorial programs and public ceremonies. In recent years the honor guard has made uniform and equipment upgrades to ensure a professional appearance. In order to present crisp movement in its drills, the honor guard now practices on a regular basis. In 2007, the honor guard presented the colors at Miller Park during a Milwaukee Brewer baseball game. This was the second time this distinction was bestowed upon the honor guard.

---

---

# Recreation Patrol



The recreation patrol is an extension of the sheriff's department patrol division. The recreation patrol consists of the bicycle patrol, boat patrol, ATV patrol, and the snowmobile patrol. The bicycle patrol is used for patrolling the Wild Goose recreation trail, and county parks. In 2007, Deputy Mike Matoushek was assigned as the full time recreation officer. In addition to performing all manners of recreation patrol, the recreation patrol deputy is responsible for scheduling deputies who work rec patrols part time and for submitting all paperwork to the department of natural resources for a percentage of reimbursement for hours and equipment. The recreation patrol officer also provides informational training for various groups on a variety of recreational topics.

---





Boat Patrol							
	2003	2004	2005	2006	2007	% Chg	5 yr Ave.
Hours		41	50	40	442	1005%	143
Registration		2	1	1	9	800%	3
OWI		1	0	1	1	0	1
Flotation Dev.		2	4	1	6	500%	3
Lights		0	1	1	0	-100%	.5
Other		2	2	0	13	1300%	4

The mission of the boat patrol is to provide a safe environment on the county's rivers and lakes for all recreational water sports including fishing. The Department of Natural Resources reimburses a percentage of the sheriff's department costs for hours and fuel.



## ATV Patrol

	2003	2004	2005	2006	2007	% Chg	5 yr Ave.
Hours		26	33	33	55	67%	37
Registration		0	1	1	5	400%	2
OWI		0	0	2	1	-50%	1
Highway Op.		0	2	6	5	-17%	3
Helmet Viola.		1	2	0	2	200%	1
Other		0	5	3	5	67%	3

In 2003, the patrol division purchased 2 all terrain vehicles, (ATVs) that were funded through a grant. A percentage of operational costs are reimbursed by the Department of Natural Resources. The ATVs patrol the Wild Goose recreation trail and are also used for rescue and investigations operations in areas not accessible by other means.



## Snowmobile Patrol

	2002	2004	2005	2006	2007	% Chg	5 yr Ave.
Hours		77	44	33	154	367%	77
Registration		16	4	1	10	900%	8
OWI		7	0	0	3	300%	3
Trespass		0	6	5	12	140%	6
Obey Sign		4	10	0	1	100%	4
Other		7	0	0	2	200%	2

The Sheriff's Department snowmobile patrol has been active in snowmobile patrol since 1976. The patrol works closely with the Dodge County Snowmobile Association and the county's department of planning and development in an attempt to provide safe trails for public to use. The patrol also works with volunteer trail patrol ambassadors from snowmobile clubs in the county to promote safe and responsible use of snowmobiles.

---

# **DODGE COUNTY SHERIFF'S DEPARTMENT**

## **COURT SECURITY – 2007**

### **MISSION STATEMENT**

In response to Chapter 59.27 (3) of the Wisconsin statutes and Chapter 70.38 of the Wisconsin State Supreme Court Rules, the Sheriff of Dodge County and the Presiding Judge, has established a level of court security in the Dodge County Justice Facility. The Dodge County Sheriff and the Presiding Judge wish to address the potential dangers to the safety of County and State employees who work in the Dodge County Justice Facility as well as that of the public who conduct business in the facility.

Court security in the Justice Facility is designed to increase building security in a fiscally responsible manner. The manner of security is also designed to avoid unreasonable inconvenience to both staff and the public. Court security will provide a deterrent to acts of violence in the facility by maintaining a presence of security in the facility and by attempting to keep dangerous weapons and other unauthorized items out of the facility. A secondary mission of the court security staff includes providing information, direction, and other customer service needs to the public.

**Part-time court security staff:** Dave Beal, Bryan Beaudry, Fred Burger, Larry Huettl, Amy Yahnke.

### **COURT SECURITY ACTIVITY – 2007**

Counties and State agencies continue to contact the Sheriff's Department regarding our policies and procedures as they relate to security matters at the Justice Facility. These continued requests to us for information are an indication that Dodge County continues to be the example on how to design, implement, and maintain a safe environment for those who access and work in the courthouse setting.

One new part time court security officer was hired in 2007.

In March 2007 the third floor expansion project was completed opening the District Attorney's Office and Child Support. Court Security worked closely with both offices and dealt with the increased traffic to the building. In 2008 the security electronics in the court house will be updated.

In 2007 Court Security began to keep track of the numbers of people who pass through their security station. In 2007 an average of 5,460 people passed through the screening station each month which equals over 65,500 people in 2007.

---

There was a dramatic increase in 2007 for special requests for security in the courtrooms. One of the normal duties of the court security officer rover is to be present in the courtroom for proceedings that are of a sensitive nature or that have the potential of being emotionally charged. Examples of the proceedings responsible for the increases are temporary restraining order hearings, juvenile hearings, and plea and sentencing hearings.

The information provided below contains statistical data from 2003 and compares it to several previous years. You can clearly see the dramatic increase in requests for extra security. This is provided so that you may have an opportunity to view any trends as they relate to court security matters in the Dodge County Justice Facility.

<b>Court Security</b>							
	<b>2003</b>	<b>2004</b>	<b>2005</b>	<b>2006</b>	<b>2007</b>	<b>% Chg</b>	<b>5 yr Ave.</b>
<b>Arrests</b>							
Disturbances	0	1	0	0	0	0%	.2
Miscellaneous	1	3	2	3	0	-100%	2
Warrants	36	36	31	32	49	53%	37
<b>TOTAL</b>	<b>37</b>	<b>40</b>	<b>33</b>	<b>35</b>	<b>49</b>	<b>40%</b>	<b>39</b>
<b>Disturbances</b>							
Clerk of Courts	0	2	0	1	0	-100%	.6
Court Rooms	0	2	1	5	11	120%	4
Child Support	0	0	0	0	0	0	0
District Attorney	0	0	0	0	0	0	0
Family Court	0	1	1	4	0	-100%	1
Other	2	5	1	2	3	50%	3
<b>TOTAL</b>	<b>2</b>	<b>10</b>	<b>3</b>	<b>12</b>	<b>14</b>	<b>17%</b>	<b>9</b>
<b>Miscellaneous</b>							
Paper Service	1	2	1	2	1	-50%	1
Subjects in Custody	18	21	28	35	45	29%	29
Requests for Security	8	50	40	64	139	117%	60
Contraband Confiscated	0	0	2	1	1	0	.8
Weapons Confiscated	0	0	0	0	0	0	0
<b>TOTAL</b>	<b>27</b>	<b>73</b>	<b>71</b>	<b>102</b>	<b>186</b>	<b>82%</b>	<b>91</b>



## 2007 Donations:

*The Sheriff's Department relies on numerous organizations, agencies and private citizens to complete our mission and goals.*

Craig Smith Racing	\$757.00	Shop with Cops
Wal-Mart	\$1,000.00	Shop with Cops
Salvation Army	\$620.00	Shop with Cops
Seippel Family Foundation	\$210.00	Shop with Cops
Diane LaLonde	\$50.00	Shop with Cops
Rick Schmitt Agency	\$70.00	Shop with Cops
Telephone Pioneer Chapter #4	\$250.00	Shop with Cops
Lewis E. Milner	\$50.00	Shop with Cops
Deborah Sauer	\$40.00	Shop with Cops
Waupun Equipment Co. Inc.	\$100.00	Shop with Cops
Violet Ebert	\$140.00	Shop with Cops
Dodge Central Credit Union	\$50.00	Shop with Cops
Brooks Ambulance	\$200.00	Shop with Cops
Mary Pautsch Realty LLC	\$840.00	Shop with Cops
Richards Insurance of Beaver Dam LLP	\$70.00	Shop with Cops
Schacht & Schacht	\$70.00	Shop with Cops
Thrivent Financial for Lutherans	\$300.00	Shop with Cops
Richards Benefits & Financial Services	\$700.00	Shop with Cops
Horicon Bank	\$100.00	Shop with Cops
Beaver Vending	\$25.00	Shop with Cops
Paul Kastenmeier	\$25.00	Shop with Cops
Vintage Parts	\$200.00	Shop with Cops
Seneca Foods Corporation	\$220.00	Shop with Cops
Horicon PTO	\$100.00	Shop with Cops
Jerr-Linn Enterprises Inc.	\$280.00	Shop with Cops
Waupun Area High School	\$200.00	Shop with Cops
Waupun Area High School	\$100.00	Shop with Cops
Waupun Area High School	\$150.00	Shop with Cops
Kim Woolsey	\$150.00	Shop with Cops
Horicon Public School-Activity Acct Fund	\$70.00	Shop with Cops
Columbus Professional Police Assoc.	\$150.00	Shop with Cops
Cheryl Ziemke	\$70.00	Shop with Cops
Quad Graphics	\$350.00	Shop with Cops
Thrivent	\$800.00	Shop with Cops
Aramark	\$25,000.00	Fitness Room and Greenhouse
Riel Produce	\$250.00	Garden Plants and Christmas Tree
Wal-Mart	\$250.00	CIT
BD Kiwanis	\$250.00	
Independent Insurance Agencies of Dodge County	\$1,500.00	CIT
Sam's Well Drilling	\$600.00	Baseball Cards
Green Lake Powersports		Use of trailer for 2 PWC's
Michael Kuzdak	\$100.00	
St. John's Ladies Aid-Watertown	\$25.00	
St. John's Ladies Aid, Watertown	\$25.00	
St. John's Markesan	\$150.00	
Waukesha HCE	\$50.00	
Todd Nehls	\$750.00	
Wal-Mart	\$5,000.00	

**TOTAL DONATIONS RECEIVED:**

**\$42,457.00**