

Dodge County Sheriff's Department 2006 Annual Report



Jody Coda-Corrections



Paul Coopman-Corrections



Samantha Hartzman-Corrections



Bradley Knoll-Corrections



Jeremy Grossman-Communications



Ashley Beck-Corrections



Kasey Young-Corrections



Ryan Schwartz-Patrol



Michael Willmann-Corrections



Shawn Rogers-Deputy Secretary



Donald Connard-Patrol

Dedicated to our new employees hired in 2006.

Dear Reader:

What follows this page is a synopsis of the efforts of the Dodge County Sheriff's Department and its activity in 2006. It was a year that generated some significant events for the law enforcement community. Whether it was the investigation into a Waupun homicide, a double homicide in Nebraska or the end of the year burglary ring, the department worked diligently in those efforts and more importantly, in complete cooperation with our local law enforcement partners.

The Dodge County Detention Facility is providing a great service in its ability to safely secure hundreds of federal inmates daily and annually generating millions of dollars for our county general fund. The Patrol Division continues to provide a safe and secure environment for our motoring public and those that visit this great county.

The Criminal Investigation Division experienced a significant increase in cases as the county experienced a major up-tick in criminal acts. The CI Division worked as a team and I am proud of their successes and response. The Drug Unit has been reorganized and is currently experiencing a very productive year.

The E911 Center and staff are dedicated to providing the best emergency dispatch service available. Their dedication and willingness to take on additional responsibility is commendable.


In 2006 we have been able to enhance many of our operations. We enjoy a solid partnership with the Dodge County IT and Land Information Departments, working together for the common good of the customer.

The administrative staff, civil process, transport, and court security efforts remain focused, busy, and in constant support of the departments overall mission.

Each and every department head is focused, and has established both short and long-term goals for their division which we will use as a foundation for our future initiatives. These goals include MDC's, centralized dispatch, consolidation, contract law enforcement, and centralized records. We MUST continue to use technology to our advantage.

I am very proud of the Sheriff's Department Administration, each and every staff member and employee. We have aggressively traveled the county, provided dozens of lectures, speeches and exhibitions to our customers. The message from the citizens is clear – "keep up the great work. We are proud of the advances made to date. Don't slow down, maintain the momentum, law enforcement is important to us."

Respectfully submitted,



Sheriff Todd M. Nehls

Management and Staff

Sheriff

Chief Deputy

Todd M. Nehls, Fox Lake
Blaine Lauersdorf, Rubicon

Jail Administrator

Dep. Jail Administrator
Dep. Jail Administrator
Supervisor
Supervisor
Supervisor
Supervisor
Supervisor
Supervisor
Supervisor
Supervisor
Corporals

Maureen Soblewski, Burnett
Thomas Polsin, Lowell
Kevin Hill, Juneau
Dawn Smack, Beaver Dam
Rick Gempler, Beaver Dam
Scott Smith, Beaver Dam
Mark Schwartz, Watertown
Aaron Ellis, Mayville
Mark Born, Beaver Dam
Jason Hundt, Hustisford
Chad Riter, Waupun

Aaron Potratz - Waupun, Brenda Pieper, Scott Buckner, Michael Harmsen, Gwyn Meyer, Linda Thieme, Jim Brace, & Mark Goetsch - Beaver Dam, Jason Polsin, Lowell, Arthur Elsner, Hustisford.

Patrol Captain

Patrol Lieutenant
Sergeant
Corporal
Patrol Lieutenant
Sergeant
Corporal
Patrol Lieutenant
Sergeant
Corporal

Rodney Kreitzman, Beaver Dam
Trace Frost, Burnett
Stephen Allerman, Juneau
Dean Hopp, Waupun
Douglas Ninmann, Burnett
James Ketchum, Juneau
Dennis Walston, Mayville
Anthony Brugger, Clyman
David Weninger, Juneau
Vacant

Lieutenant of Detectives

Joanne Swyers, Beaver Dam

Communications Director

Sergeant

Patricia Ninmann, Burnett
Jamie Buelter, Juneau

Law Enforcement Committee **Russell Kottke, Board Chairman**

Chairman Kenneth Neumann
Supervisor James Layman
Supervisor Ernest Borchardt
Supervisor Jeff Schmitt
Supervisor MaryAnn Miller

District #9
District #31
District #19
District #10
District #1

Deputy Secretaries



Debra Werner -Traffic

Debra processed over 14,177 contacts in 2006. These contacts included citations, warnings, accidents, and other calls for service. Debra is responsible for the traffic dictations from 30 deputies and keeps track of all court notices and maintains a court calendar for the deputies. Debra also verifies that accident reports are filed with the State and scanned into our system before being released. She maintains the fatality list on all fatal traffic accidents as well as a pin map for the Dodge County Highway Safety Commission.



Debbie Kaul -Receptionist/Civil Process

Debbie began her career with the Sheriff's Department in 1989. Debbie is the main point of contact to visitors at reception window. Debbie's primary responsibilities include processing civil papers that need to be served, mail out accident reports and record checks.



Diane Dahl -Deputy Secretary

Diane has been with the Sheriff's Department since 1996 and is the Administrative Assistant to the Chief Deputy and Sheriff. Diane's responsibilities include the accounts payable for the department, assists with completion of complaints and processing related paperwork. Diane is also responsible for the ordering of supplies, forms, purchase orders, and distribution of Special Notices/Orders and Department Correspondences.



Nancy Basol -Deputy Secretary

The hats that Nancy wears at the Sheriff's Department are numerous. They involve generating and finalizing reports which the detectives and deputies dictate, transcribing narratives, entering any stolen property into the Uniform Crime Reporting system, which includes city, county, state and Federal law enforcement programs. Nancy's entire day is spent transcribing reports, forwarding reports to supervisors, answering phones, filing, balancing two separate checking accounts monthly, and in essence being a "jack of all trades."



Kathy Vergenz -Evidence Clerk/Training

Kathy handles the registration of all staff that will be attending the different trainings throughout the year, records the training in various locations and archives all supporting paperwork. Kathy also verifies that each staff member has completed their mandatory 24 hours of re-cert training and reports this to Training and Standards Bureau. As Evidence Clerk she processes the digital evidence photos, logs in the evidence, and transports evidence to either the State Crime Lab or the State Hygiene Lab. Kathy is also responsible for the mail, timesheets and policy updates.



Renee Busshardt -Warrants

Renee began her career as a Communications Officer before taking over the Warrant Secretary position. Renee enters, maintains and cancel warrant records, TRO/Injunctions, missing persons and all stolen property. Renee also maintains the Deputy Sheriff's list of sworn officers, prepares all the cards and Oath of Office. She manages the current warrants data base which currently includes over 1,800 warrants.



Shawn Rogers -Deputy Secretary

Shawn's duties include backing up different secretaries within the Sheriff's Department. Shawn primarily types deputy's reports from dictation and follow thru on the processing of each along with entering Field Contacts. She assists the Civil Process Secretary in her duties and acts as a receptionist in her absence. Shawn also is responsible for the scanning of paper documentation and the quality control of the scanning into an automated data storage system. Shawn started with the Sheriff's Department in November, 2006 and is a welcomed addition to the secretary division.

Captain Rodney Kreitzman



My Name is Rodney Kreitzman and I was promoted from lieutenant to Captain in March of 2006. I have 27 years of law enforcement experience. Twenty two of those years have been with the Sheriff's Department. I would like to congratulate my predecessor, Captain Glenn Welles on his retirement and thank him for his many years of service with the Sheriff's Department.

The Patrol Division saw many personnel changes in 2006. Deputy Eric Krueger returned to the department in August after serving his country in Iraq. Deputies Mike Reissmann and Brian Prieve were promoted to detective and are assigned to that division. Deputy Dean Hopp was promoted to day shift Corporal in November. Third shift Corporal Paul Nell left the department in December. New deputies include; Donald Counard, Chad Enright, Chad Haase, and Ryan Schwartz.

Operational changes in 2006 have had a positive effect on how efficiently the division conducts business. A formal system of case management was implemented in the division. Case management will ensure that investigations move forward in a timely manner covering all aspects from assignment to adjudication of the case. Lieutenants are able to monitor the status of cases assigned to deputies on their respective shifts and will have contact with the deputy to review the status of all open cases.

Another change called "on shift enforcement" allows the division to focus on traffic enforcement in areas of the county that have traditionally seen a high number of accidents or other types of moving traffic violations. These special operations are done without grant money and without additional costs to the tax payers. When a shift is fully staffed, a shift supervisor is able to dedicate one or two squads to an area specifically for a traffic enforcement operation. These squads do not respond to calls for service during the operation unless it is an emergency.

Administrative and supervisory changes also took place in the division. Lieutenants' work schedules were changed to different hours of work, and to a different work rotation so that each lieutenant has an opportunity to have contact with every employee on their shift. Specialized duties of the lieutenants have been reassigned and brought into alignment to eliminate duplication and crossing over areas of responsibility. Supervisory topics are now addressed at monthly staff meetings in an effort to provide more efficient management of divisional resources. These topics also provide a progressive atmosphere for career development of both the deputies and the supervisors.

I would like to take this opportunity to introduce you to the three lieutenants that are responsible for the shifts in the patrol division of the Sheriff's Department. Each lieutenant has one or more areas of specialized responsibility in addition to running their respective shifts.

Lieutenants



- Lt. Trace Frost is the day shift lieutenant and oversees all first shift patrol operations. Lt Frost's specialized areas of responsibility include; certain aspects in the hiring process of new deputies, administrator of the division's field training program as well as all training for the division. Lt. Frost is also in charge of the Sheriff's Department range program and court security in the Justice Facility. Lt. Frost has 22 years of law enforcement experience. Nine of those years have been with the Sheriff's Department. Lt. Frost resides in the Town of Burnett.



- Lt. Douglas Ninmann is the afternoon shift lieutenant and oversees all second shift patrol operations. Lt. Ninmann's specialized areas of responsibility include administration of 16 of the Sheriff's Department's special programs. Those programs include; recreational patrol, fatal vision, radar trailer deployment, security for special events, drug recognition expert program, salvage vehicle inspections, KID ID program, honor guard, child safety seat inspections, crash investigation team, public appearances, squad video program, truck enforcement program, and department liaison for fire departments, emergency medical services, and townships. Lt. Ninmann has 28 years of law enforcement experience. Twenty three of those years have been with the Sheriff's Department. Lieutenant Ninmann resides in the Town of Burnett.



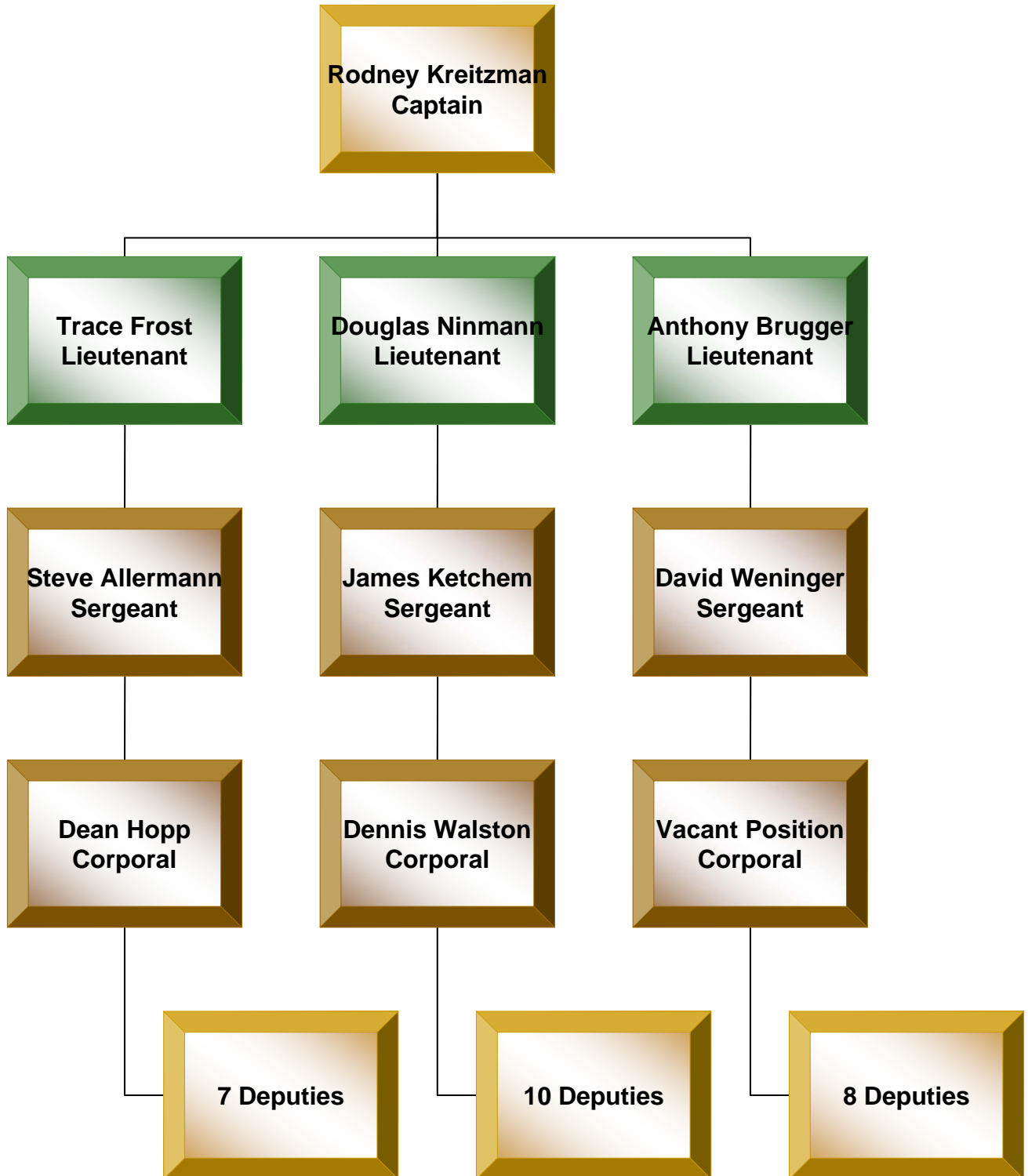
- Lt. Tony Brugger is the third shift lieutenant and oversees all thirds shift patrol operations. Lt. Brugger's specialized areas of responsibility include; maintaining the registration and vehicle maintenance records for the entire Sheriff's Department fleet of vehicles, and maintaining records for and an inventory of the supplies and equipment used by the patrol division. Lt. Brugger is the assistant team leader of the SWAT team and is a certified instructor in Police Response to Active Shooter training. Lt. Brugger has 22 years of experience with the Sheriff's Department and resides in the Town of Clyman.

2006 Equipment



- The patrol division took delivery of some specialized equipment in 2006. This first item was a new radar trailer. This trailer has several options that will benefit the division and the county. The trailer performs several functions for us on a compact mobile platform. The trailer acts as a deterrent to speeders as it informs them of their speed and will start flashing after a certain number of miles per hour over the limit. The unit also has a programmable message board on it which will allow us to deploy it under a variety of situations. The on board computer keeps statistics on the vehicles that it clocks. The computer program keeps track of the date, time, speed, and number of cars that it clocks when it is deployed. This information can be down loaded to identify peak traffic times, traffic volume, and whether or not there is a speed problem in the area. Supervisors can use this information to make traffic enforcement assignments.
- The radar trailer was put into service at the end of August. From August through the end of 2006 the trailer was deployed 47 times in 26 different locations. The deployments totaled 747 hours during which time 40, 051 vehicles were clocked.
- The second piece of equipment is in the form of a Chevrolet Tahoe. The department is poised to purchase 2 more in 2007. The Tahoes will be assigned to the shift sergeants and as with the radar trailer, the Tahoe provides us with several options for use. The Tahoe will be used as a patrol vehicle but will not see the miles that a squad does since they are assigned the patrol sergeants. The division is in short supply of 4 wheel drive vehicles and as such it will help during periods of inclement weather as well as availability to access off road incidents. The Tahoes will be set up with equipment allowing them to be used as a temporary command post.

Patrol Division Staff



Dodge County Deputies

■ 1st Shift

- ❑ Dale Kreitzman
- ❑ Greg Weihert
- ❑ Steve Moul
- ❑ Scott Ziorgen
- ❑ Kevin Harvancik
- ❑ Michael Morell
- ❑ Kevin Homan

■ 2nd Shift

- ❑ Theodore Sullivan
- ❑ Jason Westphal
- ❑ Eric Krueger
- ❑ Scott Petrack
- ❑ Brian Loos
- ❑ Kelly Cotter
- ❑ Michael Matoushek
- ❑ John Monaghan
- ❑ Gilbert Fairman
- ❑ Chad Enright

■ 3rd Shift

- ❑ Brock Cotter
 - ❑ Randy Kramer
 - ❑ Andrew Krumholz
 - ❑ Dale Schmidt
 - ❑ Peter Mantai
 - ❑ Donald Counard
 - ❑ Chad Haase
 - ❑ Ryan Schwartz
-

2006 Stat Leaders

The deputies listed below lead their respective shift in statistics for 2006. The division uses 8 categories to look at patrol activity.



- Deputy Greg Weihert lead first shift in 6 out of the 8 activity categories including most activity for the year on day shift as well as fewest miles traveled per traffic contact. Deputy Weihert is a 16 year veteran of the department and resides in the town of Portland.



- Deputy Brain Loos lead second shift in 7 out of the 8 activity categories including most activity for the year on second shift as well as fewest miles traveled per traffic contact. Deputy Loos also lead the entire patrol division in these two categories. Deputy Loos has been with the department for 4 years and resides in the town of LeRoy.



- Deputy Dale Schmidt lead third shift in 6 out of the 8 activity categories including most activity for the year on third shift. Deputy Schmidt issued the most traffic citations of any officer in the entire patrol division. Deputy Schmidt has been with the department for approximately 3 years and resides in the Waupun area.
-

Calls for Service, Miles Patrolled, Deputies

	2002	2003	2004	2005	2006	% Chg	5 yr Ave.
Calls for							
Service	15,324	22,072	21,859	21,750	26,659	23%	21533
Total Miles							
Patrolled				785,030	806,896	3%	795963
Average number							
of deputies				29	26	-10%	28
Average Patrol							
Miles Per Deputy				27070	31034	15%	29052

This is a new chart which displays categories and numbers that have a direct correlation to each other. Calls for service and the number of deputies to handle those calls have a direct impact on the number of miles put on for each year. Fewer deputies result in having to travel greater distances to handle calls for service. These increases also driver up operating expenses such as fuel consumption and fleet maintenance.

Citations

	2002	2003	2004	2005	2006	% Chg	5 yr Ave.
OWI	232	302	429	376	336	-11%	335
Underage Drk.	147	191	233	188	197	5%	191
Speeding	1478	2112	2202	1853	2155	16%	1960
Safety Belt	101	343	385	295	403	37%	305
Fail to Stop	96	143	158	116	118	2%	126

Citations for failure to fasten safety belts, is up significantly for 2006. In March the division implemented a no tolerance policy for seatbelt use. This means that if you are a driver or passenger of a motor vehicle in Dodge County, are not wearing a safety belt, and have contact with a sheriff's deputy, you will be ticketed. Our hope is to gain compliance by the motoring public and thereby reduce the number of fatalities and serious injury accidents in the county.

Traffic Accidents

	2002	2003	2004	2005	2006	% Chg	5 yr Ave.
Fatal Crashes	28	18	11	18	15	-17%	18
Fatalities	29	19	12	22	16	-27%	20
Injury	242	239	264	289	265	-8%	260
Car / Deer	403	521	358	333	368	11%	397
Motorcycle	9	22	11	19	17	-11%	16

Traffic accidents were down as a whole for 2006. This was in line with the trend across the state. A significant factor in the reduction of accidents locally is as a result of an increase in enforcement efforts.

Crash Investigation Team

	2002	2003	2004	2005	2006	% Chg	5 yr Ave.
County Crashes				26	21	-19%	24
Hours on Scene				164	159	-3%	162
Follow up Hours				217	230	6%	224
Assist Other				3	7	133%	5
Hours				11	42	282%	27
Charges / Cits.							
Homicide				2	4	100%	3
Other Felony				11	4	-64%	8
Misdemeanor				0	1	0%	1
County Ord.				3	11	267%	7
Public Speaking							
Public Education				10	13	30%	12
Attendees				250	325	30%	288
Hours				42	78	86%	60



- The Sheriff's Department's crash investigation team is a special unit deployed to investigate major traffic crashes. The team uses state of the art laser surveying equipment and computer programs to process accident scenes and to download information recorded by a vehicle's electronic systems. The team processes this information and can reconstruct these accidents, determine the causes, and provide technical support for filing charges from these incidents. The information is also used to create exhibits that are used in criminal proceedings. With this technology and training, incidents that would have been listed as accidents in the past, can now be charged out as a criminal acts. This process now provides relief for victims, through the criminal justice system.

- When the citizen's of Dodge County think of the Sheriff's Department they most likely think of Deputies making traffic stops, investigating accidents, and responding to calls for service. While this is true, the patrol division of the Sheriff's Department is much more than what it is commonly perceived. The patrol division is active in approximately 15 other programs which are in addition to a deputy's "normal" duties. The information contained on the following pages are some of the activities that deputies are involved in beyond that of their "normal" duties.

Division Training							
	2002	2003	2004	2005	2006	% Chg	5 yr Ave.
Events	91	86	77	72	100	39%	85
Total Hours	3345	3760	3741	3007	4174	39%	3605
In-Service Hrs	1092	1236	843	1003	1495	49%	1134

- This is a new chart to illustrate the training events and hours that the patrol division is involved in for the training of it's deputies. The total hours include in-service training hours. The patrol division by nature of it's functions, require specialized training for deputies beyond that of in-service training hours. The State of Wisconsin's Training and Standards board requires that each certified law enforcement officer receives a minimum of 24 hours of law enforcement related training every year. The patrol division has a number of deputies that are State certified instructors. These deputies provide training in 24 different areas of instruction. "In house" certified instructors allow the division to provide quality training to the entire department in a fiscally responsible manner. By providing training in the county, from these in house instructors, the department is able to avoid the additional training costs of instruction, travel, housing, and meals.

Civil Process Served By Deputies							
	2002	2003	2004	2005	2006	% Chg	5 yr Ave.
Process Served	374	613	324	355	430	21%	419

- These numbers represent civil process served by the division above and beyond those served by the department's civil process division. Serving civil process is the documented serving of legal papers to citizens. Types of process include but are not limited to; court summons, subpoenas, pick up orders, emergency detentions, divorce papers, notice of law suits, and evictions to name a few.



- The Sheriff's Department's boat patrol is an extension of the patrol division. The department has its own boat and is staffed by deputies working part time during the summer months. The mission of the patrol is to provide a safe environment on the county's rivers and lakes for all recreational water sports including fishing. The Department of Natural Resources reimburses a percentage of the sheriff's department costs for hours and fuel.
- The Recreational Officer position was vacant during 2006 and will be filled in 2007.

Boat Patrol

	2002	2003	2004	2005	2006	% Chg	5 yr Ave.
Hours			41	50	40	-20%	44
Registration			2	1	1	0%	1
OWI			1	0	1	100%	1
Flotation Dev.			2	4	1	-75%	2
Lights			0	1	1	0%	1
Other			2	2	0	-100%	1



- The Sheriff's Department's ATV patrol is also an extension of the patrol division. The department received 2 ATVs through a grant in November of 2003. As with the boat patrol, the ATV patrol is staffed part time, and a percentage of operational costs are reimbursed by the Department of Natural Resources. The ATVs patrol the Wild Goose recreation trail and are also used for rescue and investigations operations in areas not accessible by other means.
- The Recreational Officer position was vacant during 2006 and will be filled in 2007.

ATV Patrol							
	2002	2003	2004	2005	2006	% Chg	5 yr Ave.
Hours			26	33	22	-33%	27
Registration			0	1	1	0%	1
OWI			0	0	2	100%	1
Highway Op.			0	2	6	200%	3
Helmet Viola.			1	2	0	-100%	1
Other			0	5	3	-40%	3

Snowmobile Patrol

	2002	2003	2004	2005	2006	% Chg	5 yr Ave.
Hours			77	44	33	-25%	51
Registration			16	4	1	-75%	7
OWI			7	0	0	0%	2
Tresspass			0	6	5	-17%	4
Obey Sign			4	10	0	-100%	5
Other			7	0	0	0%	2

- The Sheriff's Department snowmobile patrol is also an extension of the patrol division and has been active in snowmobile patrol since 1976. The patrol works closely with the Doge County Snowmobile Association and the county's planning and development department in an attempt to provide safe trails for the public to use. The patrol also works with volunteer trail patrol ambassadors from snowmobile clubs in the county to promote safe and responsible use of snowmobiles. The snowmobiles used by the patrol are leased locally. The full amount of the lease and a percentage of the operational costs are reimbursed by the Department of Natural Resources.
- The Recreational Officer position was vacant during 2006 and will be filled in 2007.

Drug Recognition Expert Incidents

	2002	2003	2004	2005	2006	% Chg	5 yr Ave.
Incidents	15	42	53	23	24	4%	31
Hours	23	63	80	35	36	3%	47

- The Sheriff's Department patrol division has been a part of the Drug Recognition Expert (DRE) program since this program was started in Wisconsin. There are currently 2 DREs in the patrol division. The division's DRE program has been a leader in the State for years with the most evaluations per year. The State reimburses the department for certain costs incurred by call out of the DRE. The DRE is subjected to an intensive training program with both class room and hands on experiences. A DRE is able to perform an examination on a person to make a determination of whether or not the person is under the influence of prescription medication or illegal drugs. The decline in incidents over the past 2 years is as a result of more agencies receiving training in this area.

Child Safety Seat Inspections

	2002	2003	2004	2005	2006	% Chg	5 yr Ave.
Events			3	3	5	67%	4
Checks			13	31	40	29%	28
Hours			4	10	13	30%	9

- The patrol division currently has 3 certified safety seat technicians. These technicians participate in various public events throughout the county educating parents and others in the proper way to secure a child safety seat in a vehicle. The technicians also advise and educate citizens on the importance of having a child properly restrained in a safety seat. Technicians also have the ability to check the quality of the seat base on standards set by the industry. This service is provided at no cost to the public.

■ Fatal Vision

- Fatal vision is a program that was started in the patrol division to educate high school students about the dangers of drinking and driving. The program consists of a classroom presentation with video. The interactive part of the experience can consist of field sobriety tests and golf carts where students wear special “drunk goggles” that simulate impairment. Students attempt to maneuver the golf cart appropriately while wearing these goggles. In 2006 the program was presented in 4 schools and reached approximately 400 students.

■ School Presentations / Public Speaking

- The patrol division regularly provides presentations to schools and other organizations on a variety of topics including drug and alcohol, stranger danger, safety, and kid IDs. In 2006 9 schools were visited reaching approximately 277 students as well as 4 civic organizations and public events reaching 1375 citizens.

Salvage Vehicle Inspections

	2002	2003	2004	2005	2006	% Chg	5 yr Ave.
Inspections	97	91	234	168	377	124%	193
Revenues	\$5,820	\$5,460	\$14,040	\$10,080	\$22,620	124%	\$11,604

- The division has 2 salvage vehicle inspectors who are licensed by the State of Wisconsin. The inspectors exam repaired vehicles that were previously junked or wrecked for citizens who wish to title a vehicle for resale. Upon a successful inspection, the inspectors provide required paperwork to the citizen. This paperwork is submitted to the State with an application for title. The increase in revenues and inspection is do to adding and additional inspector to conduct more inspections.

DODGE COUNTY SHERIFF'S DEPARTMENT

COURT SECURITY – 2006

MISSION STATEMENT

In response to Chapter 59.27 (3) of the Wisconsin statutes and Chapter 70.38 of the Wisconsin State Supreme Court Rules, the Sheriff of Dodge County and the Presiding Judge, has established a level of court security in the Dodge County Justice Facility. The Dodge County Sheriff and the Presiding Judge wish to address the potential dangers to the safety of County and State employees who work in the Dodge County Justice Facility as well as that of the public who conduct business in the facility.

Court security in the Justice Facility is designed to increase building security in a fiscally responsible manner. The manner of security is also designed to avoid unreasonable inconvenience to both staff and the public. Court security will provide a deterrent to acts of violence in the facility by maintaining a presence of security in the facility and by attempting to keep dangerous weapons and other unauthorized items out of the facility. A secondary mission of the court security staff includes providing information, direction, and other customer service needs to the public.

Part-time court security staff: Dave Beal, Fred Burger, Larry Huettl, Ryan Martin, Amy Yahnke.

COURT SECURITY ACTIVITY – 2006

Counties and State agencies continue to contact the Sheriff's Department regarding our policies and procedures as they relate to security matters at the Justice Facility. Jefferson County Sheriff's Department was the most recent to inquire on how security is conducted in the Justice Facility. These continued requests to us for information are an indication that Dodge County continues to be the example on how to design, implement, and maintain a safe environment for those who access and work in the courthouse setting.

Two new part time court security officers were hired in 2006.

In late 2006 the third floor Justice Facility expansion project began. Court security officers worked closely with the construction process to assure a secure building. As we turn our attention to 2007, we anticipate new challenges with the increase in the volume of employees working in the building and the public who access it.

There was an increase in 2006 for special requests for security in the courtrooms. One of the normal duties of the court security officer rover is to be present in the courtroom for proceedings that are of a sensitive nature or that have the potential of being emotionally charged. Examples of the proceedings responsible for the increases are temporary restraining order hearings, juvenile hearings, and plea and sentencing hearings.

- The information provided below contains statistical data from 2004 and compares it to several previous years. This is provided so that you may have an opportunity to view any trends as they relate to court security matters in the Dodge County Justice Facility.

Court Security

	2002	2003	2004	2005	2006	% Chg	5 yr Ave.
Arrests							
Disturbances	0	0	1	0	0	0%	0
Miscellaneous	1	1	3	2	3	50%	2
Warrants	26	36	37	31	32	3%	32
TOTAL	27	37	41	33	35	6%	35
Disturbances							
Clerk of Courts	0	0	2	0	1	100%	1
Court Rooms	6	0	2	1	5	400%	3
Child Support	0	0	0	0	0	0%	0
District Attorney	0	0	0	0	0	0%	0
Family Court	1	0	1	1	4	300%	1
Other	2	2	5	1	2	100%	2
TOTAL	9	2	10	3	12	300%	7
Miscellaneous							
Paper Service	1	1	2	1	2	100%	1
Subjects in Custody	5	18	21	28	35	25%	21
Requests for Security	4	8	50	40	64	60%	33
Contriband Confiscated	1	0	0	2	1	-50%	1
Weapons Confiscated	1	0	0	0	0	0%	0
TOTAL	12	27	73	71	102	44%	57

Dodge County

Central Communications

“Providing Excellence in Communications”

We are committed to providing essential emergency resources for the citizens of Dodge County. We serve as the communications link between the citizens, visitors, and public safety agencies of Dodge County.

We are driven to ensure their safety and enhance the quality of life for our community by providing efficient, reliable, responsive and professional public safety communications services.

We will nurture the public's trust by holding ourselves to the highest standards of professionalism, performance and ethics.

We are lifelong learners, accepting our responsibilities, challenges and necessary changes with a willing attitude and a servant's heart.

We Serve So That Others May Live

Patricia Ninmann
Communications Director

Jaime Buelter
Communications Sergeant

Dale Marks
Radio Technician

Janice Bobholz
Information Systems Specialist

DAY SHIFT

Lee Schneider
Communications Officer

Barbara Mullin
Communications Officer

Peter Kaczmariski
Communications Officer

SECOND SHIFT

Cheryl Sprengel
Communications Officer

Vicki Schmid
Communications Officer

Jeremy Grossman
Communications Officer

Vacant Position

THIRD SHIFT

Jennifer Welch
Communications Officer

David Zirbel
Communications Officer

Nicole Weikert
Communications Officer

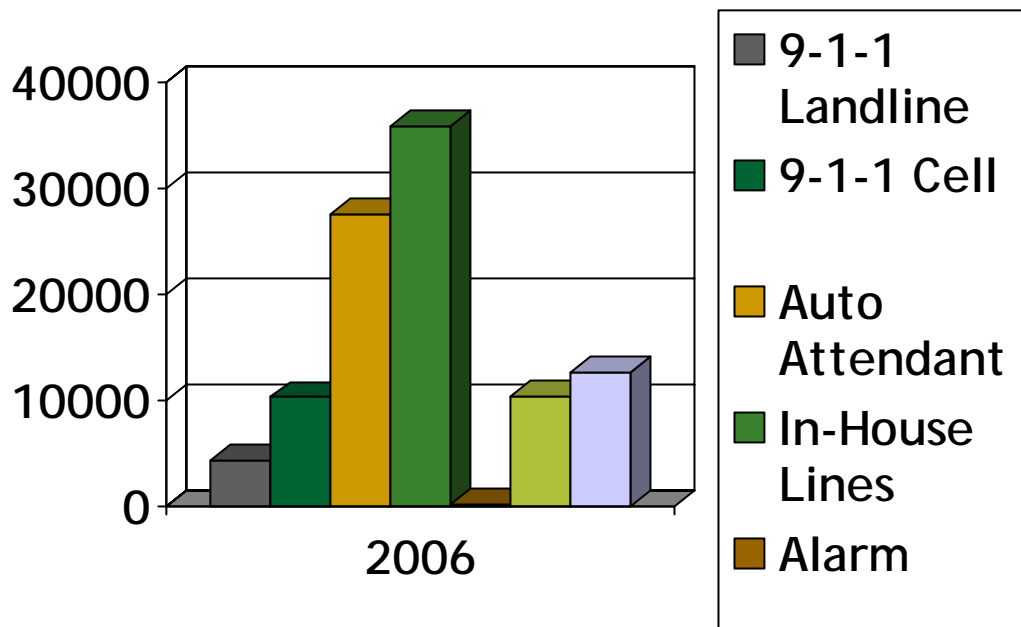
Chris Churchill
Communications Officer

Calls For Service - 2006

■ Dodge County	26,659
■ Police Departments	22,117
■ Fire Departments	654
■ EMS/First Responder Units	<u>3,045</u>
■ TOTAL:	52,475

2006 Incoming Phone Calls

■ TOTAL: 101,306



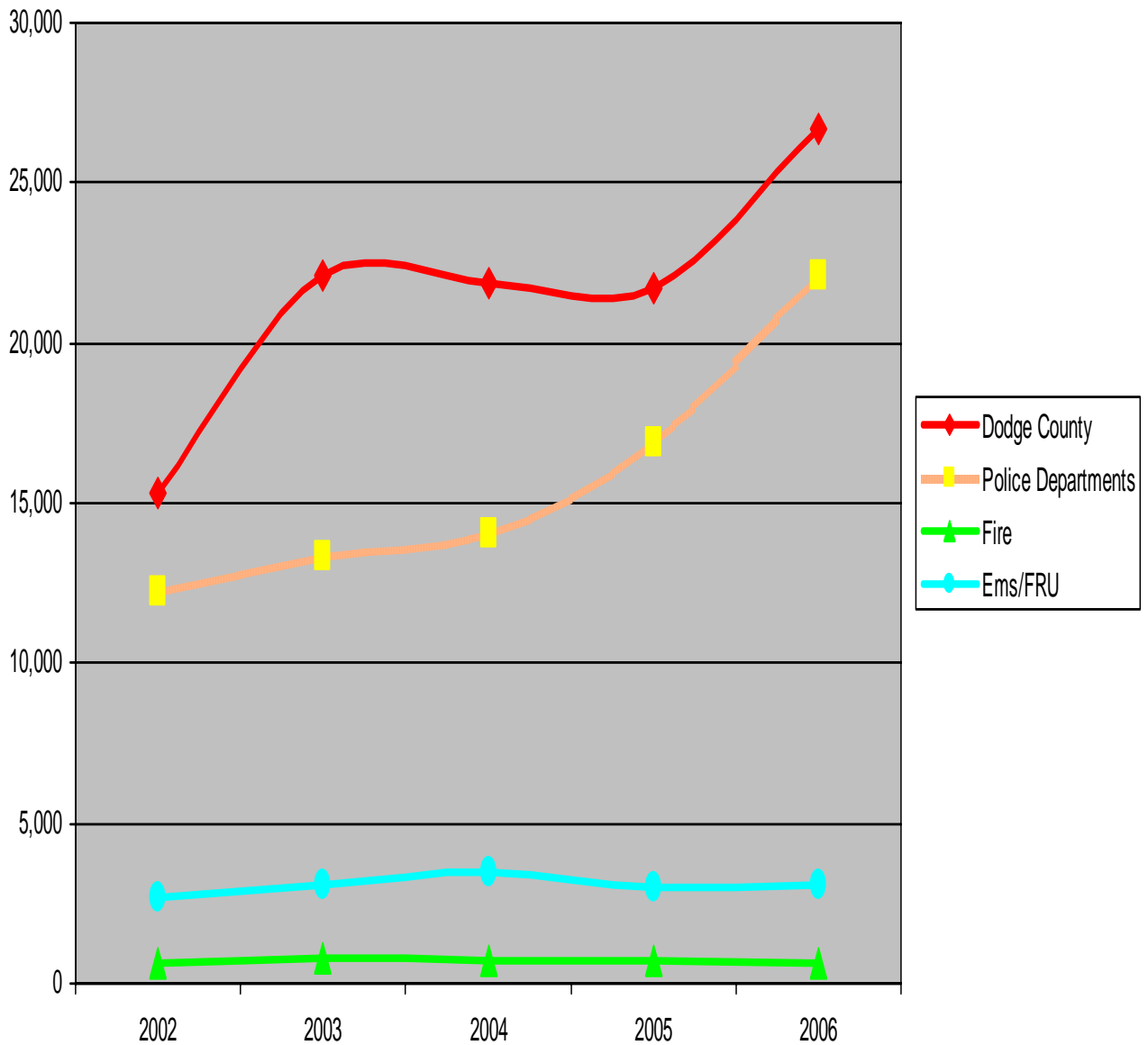
9-1-1 Landline	4369
9-1-1 Cell	10262
Auto Attendant	27583
In-House Lines	35882
Alarm	191
PD/TDD	10397
Barged In	12622

5 Year Comparable

	2002	2003	2004	2005	2006
Sheriff's Department	15,324	22,072	21,859	21,750	26,659
Police Departments	12,218	13,311	14,082	16,903	22,117
Fire Departments	616	815	685	702	654
EMS/ First Responder Units	2,713	3,059	3,441	3,008	3,045
TOTALS:	30,871	39,403	40,067	42,363	52,475

24% increase in activity from 2005

5 YR. COMPARABLE CHART



Calls by Reporting District Police Units

DEPARTMENT	2002	2003	2004	2005	2006
Twn. Beaver Dam	217	391	443	812	734
Beaver Dam	80	101	217	362	927
Brownsville	455	496	413	518	347
Clyman	4	50	103	102	102
Dodge County	15324	22072	21859	21750	26659
Emmet/Lebanon	344	269	329	271	293
Twn. Fox Lake	222	216	293	332	400
Fox Lake	1019	1261	1094	1280	1518
Horicon	1737	1803	1713	1627	4449
Twn. Hustisford	47	48	12	8	24
Hustisford	226	210	214	430	562
Iron Ridge	293	192	251	520	432
Juneau	1181	1136	1250	1599	2033
Lomira	1536	2030	1911	2126	2286
Lowell	36	103	113	82	134
Mayville	1449	1611	1800	1774	1874
Neosho/Rubicon/Ashippun	548	464	621	596	795
Other	42	75	202	383	1045
Randolph	1049	902	912	1066	1182
Reeseville	175	248	288	494	385
Theresa	1166	1108	1322	1315	1706
State Patrol	392	527	545	1159	889
TOTAL:	27542	35313	35905	38606	48776

Calls by Reporting District Fire Units

DEPARTMENT	2002	2003	2004	2005	2006
ALLENTON	5	4	5	3	4
ASHIPPUN	33	61	51	45	48
BEAVER DAM	63	88	79	92	95
BROWNSVILLE	24	29	28	22	29
BURNETT	18	27	26	6	8
CLYMAN	22	23	21	16	16
COLUMBUS	12	26	17	16	27
FOX LAKE	32	26	22	31	25
HARTFORD	5	17	11	18	20
HORICON	36	36	36	25	31
HUSTISFORD	19	29	24	23	13
IRON RIDGE	25	33	29	35	26
JUNEAU	48	45	42	30	28
KEKOSKEE	21	12	15	19	17
KNOWLES	10	6	11	9	12
LEBANON	29	45	36	34	20
LOMIRA	31	54	39	47	26
LOWELL	5	3	3	4	1
MAYVILLE	28	31	33	32	27
NEOSHO	15	11	18	17	10
RANDOLPH	34	36	27	34	31
REESEVILLE	11	26	17	30	21
THERESA	21	36	29	26	36
WATERLOO	12	16	11	13	4
WATERTOWN	25	40	16	26	22
WAUPUN	14	24	13	16	23
WOODLAND	18	31	26	33	21
TOTALS:	616	815	685	702	654

Calls By Reporting District EMS/First Responder Units

DEPARTMENT	2002	2003	2004	2005	2006
ALLENTON EMS	7	5	5	3	8
ASHIPPUN FRU	92	53	85	77	88
BEAVER DAM EMS	212	246	301	288	285
BROOKS EMS	32	30	54	63	53
BROWNSVILLE FRU	55	60	75	66	69
BURNETT FRU	20	23	18	16	23
CAMPBELLSPORT FRU		12	2	6	9
CLYMAN FRU	31	30	44	26	30
COLUMBUS EMS	38	35	37	40	37
FOND DU LAC EMS	8	30	80	45	40
FOX LAKE EMS	117	143	144	107	102
HARTFORD EMS	115	141	238	134	111
HORICON EMS	380	400	389	340	362
HUSTISFORD FRU	73	85	79	95	89
IRON RIDGE FRU	60	73	78	84	77
JUNEAU EMS	309	348	343	331	403
KEKOSKEE FRU	47	46	33	57	40
LEBANON EMS	108	114	201	128	126
LOMIRA FRU	99	126	98	97	123
LOWELL FRU	19	20	22	26	16
MAYVILLE EMS	344	456	511	456	425
NEOSHO FRU	28	51	61	51	52
OCONOMOWOC EMS	45	32	77	37	45
RANDOLPH EMS	132	153	172	130	138
REESEVILLE FRU	25	76	32	39	34
STONE BANK EMS		2	18	24	18
THERESA EMS	131	177	162	156	176
WATERLOO EMS		29	18	20	9
WATERTOWN EMS	71	59	64	66	73
TOTAL:	2598	3055	3441	3008	3045

CRIMINAL INVESTIGATION DIVISION

DRUG TASK FORCE

EVIDENCE UNIT

■ Lt. Jo Anne Swyers	Supervisor
■ Det. Vickie Brugger	Sensitive Crimes, Evidence Custodian, Arson
■ Det. Brian Drumm	Sensitive Crimes, Prescription Drug Diversion
■ Det. Robert Neuman	General Investigation, Arson, White Collar Crime
■ Det. Brian Prieve	Drug Investigation
■ Det. Michael Reissmann	General Investigation, Property Crimes, Evidence Custodian
■ Det. James Rohr	General Investigations, Fraud
■ Det. Daniel Stiemsma	Prison Investigation, Drug Investigation
■ Secretary Kathy Vergenz	Evidence Clerk

The year 2006 continued the trend of change for the Criminal Investigative Division. As they settled in to the facility and became familiar with the new technology, they encountered several personnel changes. Jo Anne Swyers was promoted from detective to lieutenant of the Criminal Investigative Division. Det. Mark Murphy retired and Det. James Engels left the Drug Unit to take a position as Special Agent with Wisconsin Department of Criminal Investigations. Brian Prieve was promoted to detective and assigned to the Drug Unit. Patrol Deputy Kevin Day joined the Drug Unit for a one year assignment. Michael Reissmann and Daniel Stiemsma were promoted to detective and joined the criminal investigation team. Deputy Secretary Kathy Vergenz began duties as Evidence Clerk. These promotions bring additional skills and expertise to the units.

Dodge County has had a strong drug unit for several years under Det. Engels. His resignation spurred a time of reevaluation and adjustment. Lt. Swyers began active supervision of the unit, staffed full time by Det. Brian Prieve, Patrol Deputy Kevin Day, and part time by retired Beaver Dam Police Detective Jeff Meyer, and Det. Daniel Stiemsma. Det. Meyer brings decades of drug and investigative experience to the Unit and Det. Stiemsma plays a vital role with technology and analytical expertise. Det. Prieve and Deputy Day also serve on the Dodge County SWAT Team, which contributes to strong tactical operations. Det. Prieve's leadership spurred renewed interest in the Dodge County Drug Task Force, now including 11 police agencies. These agencies not only provide manpower for joint drug investigation but contribute vital intelligence regarding local drug activity, K-9 resources, equipment and other expertise resulting in a strong, pro-active Drug Task Force. Task Force investigations resulted in 187 arrests (many including multiple charges) in 2006.

The Criminal Investigation Division conducted 654 investigations in 2006, including 94 sensitive crimes, 132 prison crimes, and 45 fraud complaints. Some major cases included the entire division assisting Waupun Police Department in the death of a child and life-threatening injury to another child in a Dodge County foster home, resulting in a confession and conviction. Det. James Rohr assisted the State of Nebraska in the investigation of a brutal double homicide committed by two Dodge County youths who have reach plea agreement in the criminal cases. Det. Robert Neuman and Det. Brian Drumm cooperated in a multi-agency task force investigating a major burglary ring in the greater Beaver Dam area, clearing over 50 burglaries and other crimes through the arrests of five adults.

The Criminal Investigative Division has begun ongoing analysis of criminal activity and crime trends through case management technology in order to effectively target crime through proactive activities and appropriate training and equipment acquisition. The new facility and technology have promoted the exchange of intelligence information between the Criminal Unit and the Drug Unit, as well as other police agencies. Crime analysis and information sharing are important tools in achieving and maintaining a state of readiness to meet the future investigative needs of the citizens of Dodge County.

Criminal Investigation Division-

Clearance Rates 2006

Type of Crime	Number	Solved	Percentage	
Murder	1	1	100	
Forcible Rape	7	5	71	78% Violent Crime Clearance
Robbery	6	3	50	
Aggravated Assault	23	21	91	
Burglary	117	27	23	36% Property Crime Clearance
Theft	154	16	10	
Motor Vehicle Theft	15	9	60	
Arson	2	1	50	

Criminal Investigation Division-

5 Year Crime Trend

	2002	2003	2004	2005	2006
Violent Crimes--Total	21	23	24	21	37
Murder	0	0	0	0	1
Forcible Rape	2	5	7	3	7
Robbery	0	3	2	0	6
Aggravated Assault	19	15	15	18	23
Property Crimes--Total	348	287	302	237	288
Burglary	86	108	111	75	117
Theft	231	158	169	140	154
Motor Vehicle Theft	25	20	21	21	15
Arson	6	1	1	1	2

Criminal Investigation Division- Website Activity

	2004	2005	2006
Crime Tips	32	17	30
Traffic Concerns	7	7	11
Surveys	6	6	4
Warrant Tips	58	63	51
Total Tips/Contacts	103	100	96
Total Pages Visited	96,000	84,042	86,537

2006 Drug Stats

Based on OJA Entries

Arrests	2005	2006
Misdemeanors	62	41
Felonies	133	146
Total	195	187

Request for Charges		
Cultivating/manufacturing	3	1
Distributing/Selling	27	29
Possession w/Intent to Deliver	30	28
Possession/Concealing	129	98
Using/Consuming		13
Pharmaceutical Diversion		4
Keeper of a Drug House	6	14
Total	177	187

Drug Type			Largest Amount 2005	2006	Quantity
Crack Cocaine	8	8	5	16	grams
Cocaine	39	35	127	67	grams
Hashish		1		62	grams
Marijuana	113	116	482	912	grams
Marijuana Plants		3	101	49	plants
Morphine		1		40	DU's
Other narcotics	9	5	20	12	DU's
LSD		2		trace	DU's
Methamphetamine		2		8	grams
Other prescription drugs		1		4	DU's
Anabolic Steroids		1		trace	DU's
Ecstasy	1	3	10	9	grams
Oxycotin	4	4	30	24	DU's
Methadone	1	5	200	31	Milliliters

DU's - dosage units

Arrests		Prior Drug History	
		Yes	No
Male	139	80	59
Female	48	25	23

Civil Process

	2001	2002	2003	2004	2005	2006
Writs of Excutions						
Excutions Handled	5	8	20	16	20	22
Excutions Unsatisfied	5	1	3	2	3	0
Satisfactory Arrangements Made	10	9	17	14	12	17
Seized Vehicles	1	3	9	0	3	0
Seized Mobile Homes	2	3	4	2	1	11
Seized Boat-Motor-Trailer-Snowmobile-ATV	1	3	7	3	1	51
Out of County	0	0	0	0	0	1
Number pending	0	0	0	0	0	0
Writs of Assistance						
Writs Handled	15	8	6	19	25	20
Returned Atty's Request	4	1	2	2	0	3
Seized Boat-Motor-Trailer	4	3	0	0	0	0
Seized Vehicles	0	0	1	0	0	0
Seized Business Equipment	0	2	2	75	0	
Residence	10	0	0	16	24	12
Mobile Homes	1	1	1	0	1	3
Not found	0	1	0	0	0	2
Writs of Restitution						
Writs Handled	67	95	112	115	152	182
Evictions	67	95	112	115	152	182
Writs of Replevin						
Writs Handled	32	65	70	63	75	51
Returned Per Atty/Out of County	1	0	17	5	4	4
Seized Personal Property						
To Include: Autos, Semis, Boats	30	65	40	40	60	46
Mobile Homes, Motor Homes	0	3	3	3	1	
Motorcycles, Shop Tools	1	2	8	5	4	
Farm Machinery	0	40	20	10	6	
Cattle	0	127 head	19 head	28 head	0	
Not Found	6	5	0	0	0	1
Writs of Capias						
Writs Handled	0	0	0	0	0	0

Civil Process - continued

Civil Process	<u>2002</u>	<u>2003</u>	<u>2004</u>	<u>2005</u>	<u>2006</u>
Total Papers Served	4,277	4,076	3,925	3,348	3,770
Served/Cty Agencies	66	61	74	67	88
Prison Papers Served	193	170	73	112	118
<i>Revenue</i>	\$123,266	\$146,210	\$152,220	\$108,376	\$106,584
Sheriff Sales	<u>2002</u>	<u>2003</u>	<u>2004</u>	<u>2005</u>	<u>2006</u>
Total Sales	83	75	160	133	155
<i>Total Dollar Amount</i>	\$7,971,228	\$6,868,780	\$11,283,597	\$7,468,047	\$12,593,447

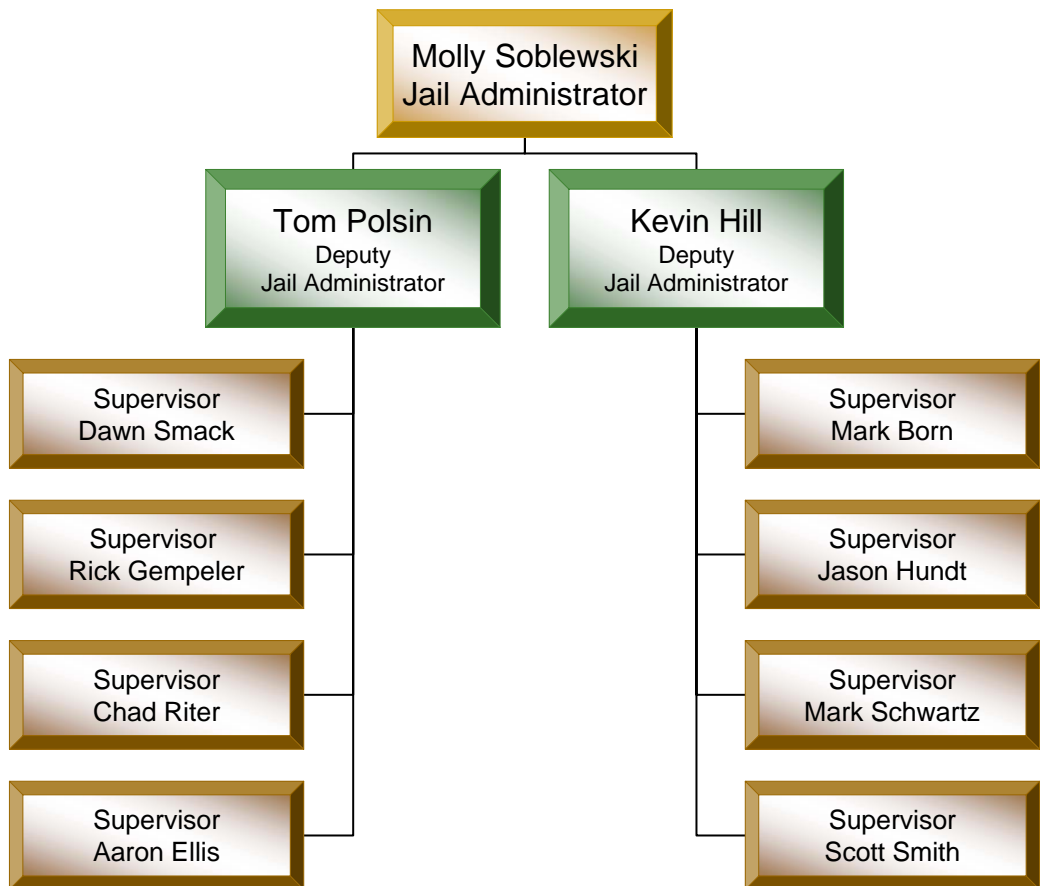
Warrants

Year	Warrants Entered	Warrants Cancelled
2002	1,221	1,139
2003	1,766	1,466
2004	1,649	1,631
2005	1,539	1,658
2006	1,383	1,475

Sheriff Transport Division

	<u>2003</u>	<u>2004</u>	<u>2005</u>	<u>2006</u>
Total Transports	1017	917	1187	1181
Warrant Pickups	313	268	378	443
Juvenile Pickups	146	63	131	142
Juvenile Transport/ Hours	364	144	351.5	373
Juvenile Transport/ Miles	12,945	5,554	13,177	12,948
Total Hours	2,809	2,379	2,789	2,220
Total Miles	107,398	90,580	115,347	112,925

Dodge County Detention Facility



2006 Bookings

Age			Ethnicity		
<18	44	00.82%	Hispanic	1236	22.91%
18-25	1840	34.10%	Non-hisp	4160	77.09%
26-40	2421	44.87%	Total	5396	
41-60	1048	19.42%			
Over 60	43	00.80%	Gender		
Total	5396		Male	4620	85.62%
			Female	776	14.38%
			Total	5396	

2006 Bookings

Type		%	Race		%
City	65	1.20	White	4600	85.25
Contract	595	11.03	Black	709	13.14
County	2780	51.52	Asian	53	0.98
FBOP	10	0.19	Other	10	0.19
FED	328	6.08	Native American	24	0.44
INS	1003	18.59	Total	5396	
Other	153	2.84			
PRO	453	8.40			
ST	0	0			
Trans in	9	0.17			
Total	5396				

Transport Trips

	2003	2004	2005	2006
USMS Milwaukee	418	408	517	448
USMS Madison	0	14	89	178
USMS Chicago	41	88	479	390
ICE	560	654	741	483

Booking Trends

	2003	2004	2005	2006
Bookings	5677	5137	4799	5396
Male	5008	4487	4127	4620
Female	669	650	672	776

Detention Facility - 2006 Transports

	Miles	Trips	Total Miles
USMS Milwaukee	124	448	55552
USMS Madison	105	178	18690
USMS Chicago	322	390	125580
Immigration	299	483	144417
Total		1499	344239

Detention Facility - 2006 Average Days of Custody

Type	
County	37.33
FBOP	50
FED	147.39
ICE	35.02
Other	12.12
PRO	15.02
State	N/A
Trans In	58.3
Total	

Detention Facility - 2006 Jail Programs

	Participants	Events
Alcoholic Anonymous	222	826
Anger Management	29	251
Bible Study	264	1463
Carwash	37	814
Catholic Bible Study	156	630
Christian Worship	260	1140
ESL	73	1251
ESL Tutor	1	35
Female Bible Study	40	120
GED	50	1128
GED Tutor	7	39
Home Monitor		
Jumah Service	0	0
Kitchen Worker	53	2953
Laundry Worker	17	1218
Library Worker	2	5
Pod Worker	104	2930
Spanish Bible Study	211	1084
Work Crew	80	1395
Other	85	525

Meals Served

2004	418,528	
2005	474,749	
2006	482,738	
3 YR	TOTAL:	1,376,015

MEDICAL STATISTICS

	2004	2005	2006
Doctor Visits	430	565	666
Nurse Practitioner	532	434	483
Nurse Sick Calls	1206	1407	1252
Grievances	76	116	150
TB Shots	1386	1493	1780
Chest X-rays	313	227	136
Dental Visits	78	59	75
Health Transfers	1850	1820	2347

Detention Facility - Revenue/Expenses

	2001	2002	2003	2004	2005	2006
Revenue	\$2,353,798	\$5,212,796	\$5,821,024	\$7,028,380	\$ 8,187,677	\$7,956,005
Expenses	\$4,674,321	\$5,886,719	\$6,809,500	\$7,497,151	\$7,547,105	\$8,286,189*
Net Levy	\$1,854,819	\$1,854,819	\$1,648,786	\$468,770	\$640,572	\$330,184

*Includes funding for renovation/expansion of Huber facility.

Assaults

	2002	2003	2004	2005	2006
Inmate on Inmate	40	40	23	16	19
Inmate on Staff	2	0	6	0	2

Average Daily Population

	2002	2003	2004	2005	2006
Contract beds	206	210	238	278	260
Dodge Cty Inmates	156	191	181	186	194
GPS	17	21	27	27	25
Hubers	62	70	73	80	84
P&P	27	24	25	26	27
Totals	362	378	386	424	454

Summary

- ❖ Over the past 3 years the total number of bookings has only risen by 5%, although the average length of stay has risen almost 55%.
 - ❖ The county population has increased 8% since 2003 which is consistent with anticipated growth and comparable to other counties in the State.
 - ❖ The female population has increased at a rate nearly double that at over 15%. This has caused a shift in the space usage within the facility.
 - ❖ In all other aspects of population diversity, there has been a steady increase over the past 5 years.
 - ❖ Our contract beds continue to be a vital asset in reducing the number of levy dollars needed to support numerous county operations.
 - ❖ As no major projects are scheduled at the facility for 2007 our goal is to continue to provide a safe environment in a cost effective manner.
-