

**Saucon Valley School District**  
**Meeting of the Facilities Committee**  
**District Office Conference Room**  
**July 9, 2025 – 5:00 pm**  
\* \* \* \* \*

Welcome to the meeting of the Saucon Valley School Board Facilities Committee. Our objective is to serve the students, parents, and residents of our community. You are an important part of this meeting, and we look forward to your questions and comments. We are all here for the same reason. All opinions are welcome and equally valuable. Our only request is that we address each other with civility and respect. Our courtesy toward each other is the best way to show our students how much we respect them as well.

The District reserves the right to move agenda items up to other committees as needed.

**Committee Members: John Conte, Vivian Demko, Laurel Erickson-Parsons, Jay Santos**

- I. **Call to the Order** – *John Conte, Committee Chair*
- II. **Pledge of Allegiance**
- III. **Recording of Attendance** – *David Bonenberger, Committee Secretary*
- IV. **Motion to Approve Agenda** –
- V. **Approval of Minutes** – June 11, 2025
- VI. **Courtesy of the Floor to Visitors – Agenda Items Only** - *Visitors should state their name and address.*
- VII. **Discussion & Action: Pool Heater**
- VIII. **Discussion & Action: Kitchen Steamer**
- IX. **Updates: District Projects**
- X. **New Business** –
- XI. **Old Business** –
- XII. **Courtesy of the Floor to Visitors** – *Visitors should state their name and address.*
- XIII. **Future Meetings** – August 13, 2025 – District Office Conference Room
- XIV. **Motion to Adjourn**

A meeting of the Facilities Committee of the Board of Directors of the Saucon Valley School District was held on Wednesday, June 11, 2025, in the District Office Conference Room. Committee Members Vivian Demko, Laurel Erickson-Parsons, and Jay Santos were present. Committee Chair John Conte was absent. Also present were David Bonenberger - Committee Secretary; Jaime Vlasaty, Superintendent; and James Deegan, Director of Campus Operations.

- I. **Call to the Order** – 5:01 pm – *Laurel Erickson-Parsons, Committee Member*
- II. **Pledge of Allegiance**
- III. **Recording of Attendance** – *David Bonenberger, Committee Secretary*  
3-Present, 1-absent (Conte)
- IV. **Motion to Approve Agenda** – Mrs. Demko, seconded by Mr. Santos, moved to approve the agenda. Vote: 3-yes, 0-no, 1-absent (Conte)
- V. **Approval of Minutes** – Mrs. Demko, seconded by Dr. Erickson-Parsons, moved to approve the April 9, 2025 minutes. Vote: 3-yes, 0-no, 1-absent (Conte)
- VI. **Courtesy of the Floor to Visitors – Agenda Items Only** – None
- VII. **Discussion & Action:** Divider wall High School Gym – James Deegan will get another quote to see if a curtain would be cheaper than trying to repair the old wall, which they can't get parts for.
- VIII. **Discussion & Action:** District Maintenance Contracts – Mrs. Demko, seconded by Dr. Erickson-Parsons, moved to send the District Contracts to the Board for approval.  
Vote: 3-yes, 0-no, 1-absent (Conte)
- IX. **Discussion & Action:** Bus and Van Purchase – Mr. Deegan is recommending the purchase of one bus at \$ 120,000 and 2 vans at \$60,000 each.  
  
Mrs. Demko, seconded by Mr. Santos, moved to send the purchase of one bus and two vans to the board for approval. Vote: 3-yes, 0-no, 1-absent (Conte)
- X. **Discussion & Action:** District Road Resurfacing – The committee recommends doing blacktopping not to exceed \$150,000. The company will be decided after a check of references.  
  
Mr. Santos, seconded by Mrs. Demko, moved to send this item to the board for approval.  
Vote: 3-yes, 0-no, 1-absent (Conte)
- XI. **New Business** – None
- XII. **Old Business** – None
- XIII. **Courtesy of the Floor to Visitors** – None
- XIV. **Future Meetings** – July 9, 2025
- XV. **Motion to Adjourn** – The meeting adjourned at 5:44 pm



# Quote

06/19/2025

**To:** SAUCON VALLEY SCHOOL DISTRICT  
Nakeshia Downer

**Project:** SAUCON VALLEY SCHOOL DISTRICT  
STEAMER

**From:** Sally Harris  
Singer Equipment Company  
150 S. Twin Valley Road  
Elverson, PA 19520

610-636-1120

Job Reference Number: 8879

This is a quote (the "Quote") to provide equipment and/or services. This Quote includes the conditions presented below and the terms that are included at <https://www.singerequipment.com/policies/quote-terms-conditions> (the "Terms").

When you accept this Quote, as provided below, this Quote, together with the Terms, will form a binding contract (the "Contract") between you and Singer Equipment Company, Inc., ("Singer").

PRICING VIA COSTARS CONTRACT# 036-E22-036

Item	Qty	Description	Sell	Sell Total
1	1 ea	<b>CONVECTION STEAMER, GAS</b> Crown (Middleby) Model No. GSX-16HE Convection Steamer, gas, (2) compartments, (16) pan capacity total, 36" cabinet base, manual controls, electronic ignition, Delime mode & automatic blow down, single drain with temperature control, split water connections, includes water filter system, removable pan supports, safety relief valve, 316 stainless steel liner, 304 stainless steel construction, 6" legs, adjustable flanged feet, 190,000 BTU, CSA Star, CSA Flame, NSF	\$20,245.68	\$20,245.68
	1 ea	NOTE: Failure or malfunction of this appliance due to poor water quality is not covered under warranty. Contact Crown for water quality solutions		
	1 ea	Domestic Shipping, inside of North America		
	1 ea	Standard one year limited warranty		
	1 ea	Extended (3) year warranty, for K-12 Schools and Universities only		
	1 ea	Specify Gas Type		
	1 ea	Voltage to be specified		
	1 ea	CK-3 Casters, 5" high, set of 4 (GSX-10HE & GSX-16HE only)		<Optional>



Item	Qty	Description	Sell	Sell Total
	1 ea	71528211 TruH2O Water Treatment System (multi-stage pack), neutralizes scale, up to 99% chlorine reduction, 5 micron filtration, quick disconnect, easy cartridge change out		
	1 ea	Drain tempering valve, for 140 degree temperature requirement. Requires 1/2" cold water connection)		
			<b>ITEM TOTAL:</b>	<b>\$20,245.68</b>
2	1 ea	<b>DELIVERY</b> Singer Equipment Company FREIGHT, INSIDE DELIVERY, UNCRATE, AND SET IN PLACE INCLUDED IN THE SALE PRICE.		
			<b>Total</b>	<b>\$20,245.68</b>

PRICING VIA COSTARS CONTRACT# 036-E22-036

Prices are valid for 10 days unless otherwise noted herein, thereafter reconfirm.

In the event of an increase in U.S. published tariffs resulting in an increase of Singer's cost for Goods that are subject to a Proposal or an order by Customer, Singer may, prior to Customer's payment in full for such Goods, increase the price for such Goods by an amount equal to the increase of Singer's cost.

Unless otherwise noted herein, freight charges are NOT included.

#### Warranties

Manufacturer's standard warranties are included. No other warranty is extended or implied unless otherwise noted herein, and ALL OTHER WARRANTIES, EXPRESS OR IMPLIED, INCLUDING WITHOUT LIMITATION WARRANTIES OF FITNESS FOR A PARTICULAR PURPOSE, ARE DISCLAIMED TO THE FULLEST EXTENT ALLOWED BY LAW.

#### Taxes

Prices do not include sales nor use tax unless otherwise noted herein. All applicable taxes are subject to the current rate at time of final invoicing and are the responsibility of the customer.

#### Payment Terms

Unless otherwise noted herein, standard payment terms are 50% due at signing of quote and acceptance of terms and conditions, and the remaining balance will be due prior to delivery. Prices are quoted based on check or ACH as a form of payment. Credit card payment may incur a service charge on the total order.

[See link to the Terms and Conditions. Return/Cancellation Section](#) for the return and cancellation terms applicable to this Quote.

[See link to the Terms and Conditions. Delivery Section](#), for delivery and shipping terms applicable to this Quote.

[See link to the Terms and Conditions. Scope of Work Section](#), for the scope of Singer's work and exclusions therefrom applicable to this Quote.

Please read this quotation carefully as it is based upon our interpretation of the items being requested. Review this quotation for errors, omissions or inaccuracies of any kind. The customer is responsible to verify all measurements, directions of operation, voltages and utility specifications prior to ordering. Any changes to the above may incur a price adjustment.

TO ACCEPT THE QUOTE AND THE TERMS, AND TO CONFIRM OUR CONTRACT, PLEASE EITHER:

- A. **Select the "ACCEPT" button at the bottom of the screen which will prompt you to execute an electronic signature, which we accept.** *By executing this Quote and the Contract hereby created, you are authorizing Singer to rely on your electronic signature as binding confirmation of your agreement to Contract. In addition, by executing this Quote, you are expressly acknowledging and agreeing to the Contract thereby created, comprised of this Quote and the Singer Terms, and the terms on each and every page of the Contract.*

B. Print, sign and return this entire document to your Singer Representative or Copy and Paste this entire document into your confirming acceptance email and send the email to your Singer Representative.

As an authorized representative of the undersigned customer, the undersigned hereby confirms and accepts [the terms of the Quote and the Terms at https://www.singerequipment.com/policies/quote-terms-conditions](https://www.singerequipment.com/policies/quote-terms-conditions), which I hereby confirm on behalf of the Customer, I have reviewed and accepted, and thus confirm and the Contract between the undersigned Customer and Singer intending the undersigned Customer to be legally bound by the terms of the Contract hereby formed.

AS THE AUTHORIZED REPRESENTATIVE OF THE CUSTOMER, I FURTHER CONFIRM THAT ANY PRE-PRINTED TERMS THE CUSTOMER MAY INCLUDE ON ANY PURCHASE ORDER OR CONFIRMATION WILL NOT AMEND THIS QUOTE OR THE CONTRACT AND WILL NOT BE BINDING ON SINGER AND ARE EXPRESSLY EXCLUDED.

If you are an individual, YOU HEREBY CONFIRM THAT YOU ARE OF LEGAL AGE TO CONTRACT IN YOUR JURISDICTION (18 OR 19 DEPENDING UPON YOUR STATE), and are signing and returning this Contract as your voluntary act and deed, intending to be legally bound by this Contract, which includes the above Quote and the Terms at <https://www.singerequipment.com/policies/quote-terms-conditions>, both of which I hereby ACCEPT.

**WE ACCEPT ELECTRONIC SIGNATURES.** *By executing this Quote and the Contract hereby created, as the authorized representative of the Customer, you are authorizing Singer to rely on your electronic signature as binding confirmation of your agreement to Contract. In addition, by executing this Quote, on behalf of the Customer, you are expressly acknowledging and agreeing to the Contract thereby created, comprised of this Quote and the Singer Terms, and the terms on each and every page of the Contract.*


Insert name of customer: \_\_\_\_\_

By (signature): \_\_\_\_\_

Name (print): \_\_\_\_\_

Title (print): \_\_\_\_\_

Date: \_\_\_\_\_



**Get Started Today!**  
Apply Now for Flexible Financing with Singer Finance Powered by LEAF!

Fill Out Our Application at [singerequipment.com/finance](http://singerequipment.com/finance)

Acceptance: \_\_\_\_\_ Date: \_\_\_\_\_

Printed Name: \_\_\_\_\_

Project Grand Total: \$20,245.68



Job: \_\_\_\_\_ Item# \_\_\_\_\_



GSX-HE

# GAS CONVECTION STEAMER

## HIGH EFFICIENCY/PERFORMANCE 10 AND 16 PAN CAPACITY



GSX-10HE



- GSX-10HE
- GSX-16HE

### OPERATION SHALL BE BY:

Gas fired, stainless steel steam generator(s) operating at 0 psi (0 kPa) with controls equipped for operation on 120 VAC, 1 Phase, 60 Hz.

- Natural gas
- L.P. gas

### Standard Features

- Water Treatment System
- Stainless steel construction -including cabinet and generators
- Electronic ignition
- Coved interior corners
- Automatic generator blow-down
- Delime mode power setting
- Deliming port is located at the front of the generator for easy access to allow cleaning of the tank
- Split water connections for simple hook up for a treated water system
- Left side access panel
- Thermostatically controlled drain
- Single drain connection
- Safety relief valve
- Separate controls and generator for each compartment
- Drain tempering system for 140 degree temperature requirement (requires 1/2" cold water connection)

### OPTIONS & ACCESSORIES AT ADDITIONAL COST

- |  |  |  |
|--|--|--|
| <input type="checkbox"/> 220 VAC, 1 Phase, 50 Hz controls (SGVS-2) | <input type="checkbox"/> Sheet pan support, (SPS-2) GSX-16HE ONLY                      | <input type="checkbox"/> Water in "Y" strainer (condenser feed)        |
| <input type="checkbox"/> Correctional package                      | <input type="checkbox"/> Full width wire shelf, GSX-16HE ONLY (CXSS-16 must order SPS) | <input type="checkbox"/> Single pantry spray hose and bracket (SP-RSH) |
| <input type="checkbox"/> 120 minute timer (T-120-2)                | <input type="checkbox"/> High sensitivity level controls for R.O. water (HSB-2)        | <input type="checkbox"/> Double pantry spay hose and bracket (DP-RSH)  |
| <input type="checkbox"/> Constant Steam (CSF-2)                    | <input type="checkbox"/> Casters   |  |
| <input type="checkbox"/> Load Compensating Timer (LCT-2)           |  |  |

### STANDARD CONSTRUCTION SPECIFICATIONS

Crown convection steamer with individual gas steam generators for each cavity. The GSX-7HE has two compartments: (1) 3-pan and (1) 4-pan; GSX-10HE has two compartments: (2) 5-pans; GCX-16HE has two compartments: (2) 8-pans. The steamer shall be constructed of satin finish stainless steel type #304. The cooking chamber is a one piece all welded, #316 stainless steel with coved corners. The heavy duty door shall have an inner liner of stainless steel with a full perimeter gasket seal, an outer liner of one piece all welded stainless steel, and a positive lock and seal mechanism with spring release. Each compartment shall be provided with removable stainless steel pan supports. A stainless steel drip trough shall be integrally connected to drain to collect condensate when the doors are opened. The control housing shall be constructed of stainless steel with a full access removable panel.

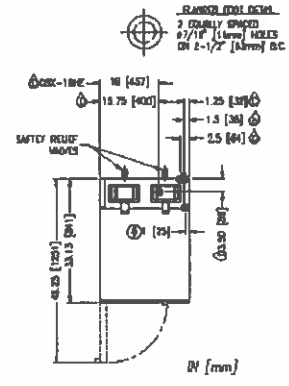
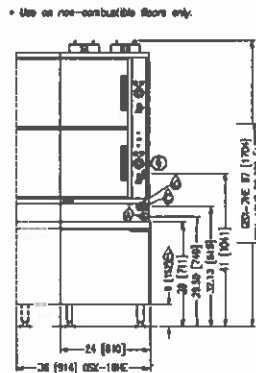
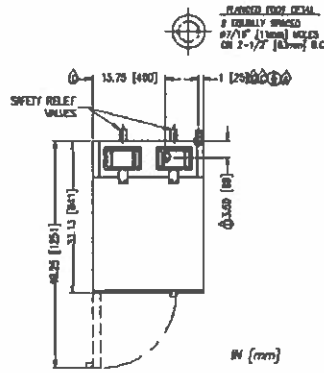
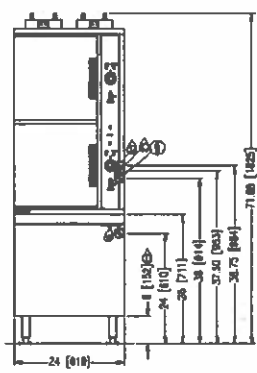
Each compartment shall have individual controls which include an illuminated three way power switch (ON/OFF/Delime), a pilot ready light, a pilot cooking light, an ignition light, a 60-minute electric timer which sounds an audible signal at the end of the cooking cycle, solid state generator controls and electronic ignition for each generator. Steam flow to the cooking chamber shall be cut off when the door is opened and reactivated when the door is closed. Steamers are mounted on a 24" stainless steel cabinet base (GSX-16HE is mounted on a 36" cabinet base) with exterior hinged door and 4 stainless steel adjustable legs flanged feet for securing to the floor. The cabinet houses the generator(s), automatic blow down and drain box. AGA/CGA Certified and NSF Approved.

**\*SEE REVERSE SIDE OF SPEC SHEET FOR WATER TREATMENT SYSTEM STATEMENTS\***



Approval Notes: \_\_\_\_\_

GSX-HE



**SERVICE CONNECTIONS**

- **ELECTRICAL CONNECTION:** Unless otherwise specified, Electrical Connection to be 120 Volts, 6. Hertz single phase with ground Furnished with 6 foot cord with 3 prong plug. Maximum 4.0 amps.
- **DRAIN:** 2" (51 mm) IPS piped to open floor drain. No solid connection.
- **GAS CONNECTION:** 3/4" IPS supply line required.
- **CONDENSATE COLD WATER:** 3/8" O.D. tubing at 25-50 PSI (170-345 kPa)
- **BOILER FEED WATER:** 3/8" O.D. tubing at 25-50 PSI (170-345 kPa).

**GAS SUPPLY**

MODEL	GAS SUPPLY PRESSURE		
	BTU/HR.	kW/HR.	
GSX-7HE	140,000	41	NATURAL: 6"-14" (152-358mm) PROPANE: 12"-14" (305-356mm)
GSX-10HE	190,000	56	NATURAL: 6"-14" (152-356mm) PROPANE: 12"-14" (305-356mm)
GSX-16HE	190,000	56	NATURAL: 6"-14" (152-356mm) PROPANE: 12"-14" (305-356mm)

**COMPARTMENT PAN CAPACITY, WEIGHT AND CLEARANCE**

Model	Compartments	Capacity	MODEL		SHIPPING WT		CLEARANCE	
			GSX-7HE	GSX-10HE	GSX-7HE	GSX-10HE	SIDES BACK	0
GSX-7HE	2	1-7 Pans (2-1/2")	650lbs (295kg)	700lbs (318kg)	900lbs (408kg)	6 [152]		
GSX-10HE	2	1-10 Pans (2-1/2")						
GSX-16HE	2	1-16 Pans (2-1/2")						

**WATER QUALITY STATEMENT**

Water is the essential ingredient in steam equipment, water quality is the major factor affecting the performance of your appliance. Crown Steam Group offers a Comprehensive Water Treatment System which exceeds our minimum water requirements. Proof of installation and proper cartridges replacement is required for warranty coverage. Water supply to Crown Steam Group steamers must be within these guidelines.

Total dissolved solids	Less than 60 PPM	Chlorine	Less than 1.5 PPM
Total alkalinity	Less than 20 PPM	pH Factor	6.8 - 7.3
Silica	Less than 13 PPM		

Water which does not meet these standards should be treated with the installation of Middleby's Water Treatment System. Call 919-762-1000 if you have questions concerning your water meeting these parameters.

\*Failure or malfunction of this appliance due to poor water quality is not covered under warranty. Reference [www.crownsteamgroup.com](http://www.crownsteamgroup.com) for complete warranty details and instructions.

**DISCLAIMER**

**Terry System Cartridge Changes / Installation** – "2-3 gallons of water MUST be purged at each cartridge change or new installation prior to water supply being fed to the steamer. Failure to do so can result in component damage within the steamer which is not covered under warranty. For additional guidance on proper installation, refer to install documentation provided with each Terry System and Replacement Cartridge Set."

**INTENDED FOR COMMERCIAL USE ONLY.  
NOT FOR HOUSEHOLD USE.**

