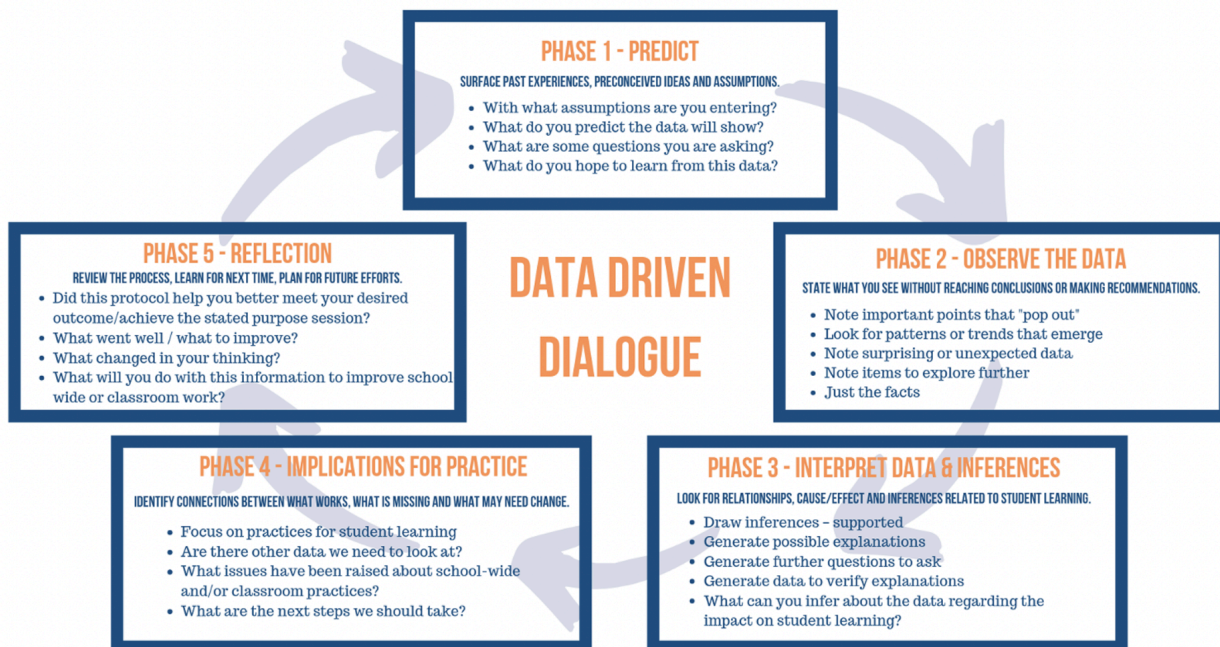




## Data-Driven Dialogue



Each PLC will utilize the data shared in the links in the March 5 PD agenda, Performance Matters data, classroom data, and MAP data (if available) to complete the following data discussions.

PLCs should utilize this protocol to look at all data and develop plans for interventions for students and student groups.

After completing the data-driven dialogue questions, each PLC will summarize findings on the *Principal Summary Report* and submit it to the building or assistant principal.



# Data Analysis PLC PROTOCOL

Revised from [www.DemonstratedSuccess.com](http://www.DemonstratedSuccess.com)

## Data-Driven Dialogue

- Predict the Data
- Observe the Data
- Refine Observations
- Interpret Data/Develop Inferences
- Identify Implications for Practice

**Team:** SS6 PLC

**Date:** 3/5/24

- **Phase 1: Prediction (5 minutes: 2 minutes alone, 3 minutes discussing)**
  - I hope to learn...
    - What to do next in terms of data.
  - I'm expecting to see...
    - That we're meeting most goals.
- **Phase 2: Observation (10 minutes: 3 minutes alone, 7 minutes discussing) State what you see without reaching conclusions or making recommendations.**
  - I notice that...
  - I'm surprised that...
- **Phase 3: Inference (10 minutes: 3 minutes alone, 7 minutes discussing) Look beyond the obvious for relationships, cause/effect and to make inferences related to student learning.**
  - I think the data tells us that...
  - What the data doesn't tell us is...
- **Phase 4: Implications for Practice (10 minutes: 3 minutes alone, 7 minutes discussing) Try to identify connections between what is missing, what needs to change, and what is working. Focus on practices to improve student learning.**
  - The first thing we need to do is...
  - And after that, we should certainly...

<b>School Name</b>	<b>LGMS</b>
<b>Grade</b>	<b>6</b>
<b>Teacher Name(s)</b>	
<b>Subject Area Focus</b>	<b>Social studies</b>
<b>Data Analyzed</b>	<b>Unit 6: Westward Expansion Quiz #2</b>
<b>Which Content and/or SOLs were assessed?</b>	
<b>Key Observations: What is the main observation from the data that is being addressed?</b>	
<b>Inference: Inferences from Data-Driven Dialogue</b>	
<b>Implications for Practice: What will be changed to address issues found in Data-Driven Dialogue?</b>	

Protocol adapted from [www.DemonstratedSuccess.com](http://www.DemonstratedSuccess.com)