

Boarding House Welcome Guide 2025 - 2026



‘Let the adventure begin!’



Prior Park
College



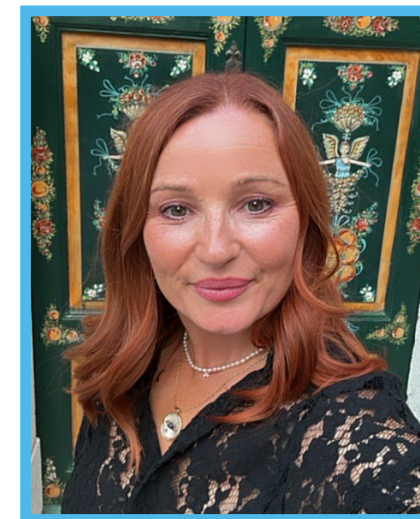
CONTENTS

House Parent Welcome	3
Student Welcome	4
St Mary's Staff Team	5
Who is who?	6
St Mary's History	7
St Mary's Social Media	8
St Mary's Boarding Committee	8
U6 St Mary's College Prefects and Peer Mentors	9
Boarding Principles	10
Keeping Boarders Safe	11
Complaints	11
Boarding Induction and Support	15
Health and Wellbeing Centre	16
A Day in the Life of a Boarder	17
St Mary's House facilities	18
House prayer	20
Things to bring checklist	20
Prohibited items	20
Frequently asked questions	21

House Parent Welcome

Hello!

A very warm welcome from me, Mel Gittins, your St Mary's House Parent at Prior Park College - or 'Housemama' as the St Mary's girls call me! You have arrived and are about to start an amazing adventure that you will never forget! As your House parent I am your 'stand in parent' while you away from home. You will see me every morning before you go to school and every day after school. We are a house of 70 incredible young ladies from a wide variety of backgrounds and cultures. Most of all though, we are a family, and we know how to have fun!



I live in St Mary's with my husband Paul, my daughters Charli (age 16) and Amelie (age 14) and my cute but crazy Dalmatian dogs, Bella & Digby!

I am so pleased that you have decided to make St Mary's your home. Having moved from Australia 23 years ago, I completely understand the nerves and excitement that go along with starting somewhere new, especially if this is a new country! I will be with you every step of the way to ensure you become a happy and confident boarder who doesn't want to leave!

St Mary's will feel like home very quickly - over the next few days there will be lots of opportunities to get familiar with the school site, meet new friends and get to know the city of Bath too. The first week can be challenging at times but the best thing you can do is tell me or the resident team how you are feeling. Talking always helps.

Let the adventure begin!

Mel Gittins

Email - stmarysboarding@priorparkschools.com

Student Welcome

Welcome to our cozy and vibrant boarding house!

Whether you're new to boarding or an experienced boarder, entering a new environment can be nerve-racking and stressful, and it's normal to feel that way, you'll soon discover that our warm-hearted girls will make you feel loved and cherished.

I'm Sofia, and I'm grateful to call this place home for the past year, and I've realised this isn't just a place for sleeping and studying, it's also a place where you can make lifelong bonds, to support each other through thick and thin, and to have fun.



St Marys is like a big family. We all come from different backgrounds, cultures, and interests, ranging from countries like Spain, Hong Kong, Japan, Germany, Vietnam, Thailand and Mexico! But we all share a common goal, to make the most of our time here and to create memories that last forever.

Your first week of St Mary's usually consists of a tour around town along with some sort of trip to allow you to get to know each other better while exploring the city of Bath. You'll also be assigned a buddy during school to help you get to your classes on time and to make new friends around the school and in your house. So don't worry about settling in as they are here to support you to make your transition as seamless as possible.

We've got an amazing boarding committee this year to make sure you'll enjoy St Marys as much as possible, from making sure you feel safe and comfortable in the house, to improving the taste of our meals through your suggestions. The boarding committee along with the boarding staff will do our best to make you feel right at home.

We hope you're just as enthusiastic as we are about this exciting new chapter in your life, even though this is a fresh start, We encourage you to maintain the connections with your friends and families at home, as they will surely miss you as you will miss them! Make sure to stay true to yourself and you'll fit right in, We'll be looking forward to seeing you this September!

With love, Sofia

St Mary's Staff Team

All these members of staff live in St Mary's and are here for you throughout the school year, weekdays, and weekends. We are your family while you are away from home.

Miss McLoughlin – Resident Tutor and Leisure Activities Supervisor

I have been part of the St Mary's team for the past year. I am currently attending the University of Bath as well as working at Prior Park planning weddings and events and at reception in the Sports Centre. In my spare time I enjoy going on long walks with my friends, exploring new places and hosting girls nights, when I'm not studying. I really look forward to getting to know and welcoming everyone in our St. Mary's community!



Mr Hansen – Resident Tutor and Teacher of Economics & Business

This will be my second year in St Mary's. I am an Economics and Business teacher and an F4 tutor in Roche House. Outside of the classroom, I am a passionate advocate of the arts - and love everything film, music, theatre and literature. Above all, I am a massive Swiftie (folklore is her best album - obviously!). Looking forward to meeting you all soon!

Xavier Lord - Resident Tutor and Teacher of Chemistry & Physics

Welcome to St Mary's! I'm Mr Lord and I teach Chemistry to A Level and Physics to GCSE, and this marks my fourth year here. Outside the classroom, I have a passion for the outdoors. I supported Ten Tors at my previous schools and currently help run the Gold Duke of Edinburgh Award at Prior. Many of my students know from the photographs I've shared in class that I am an avid birdwatcher and wildlife photographer. I often combine my love of birding with travel and maintain an extensive list of birds I've spotted, which has surprisingly fascinated some students! I truly hope you find that St Mary's is your home away from home and the wonderful team here will do all they can to make this a reality!



Who is who?

There are three key people who will support you personally and academically through boarding and school life.

Your House Parent

Mel is your parent while you are away from home and St Mary's is your home. You can speak to Mel about anything that is worrying you at any time, she will always help and support you. St Mary's is where you relax, spend your free time, evenings, and weekends. It should feel separate to school and homely.

Housemistress and Housemaster

Every boarder is placed in a day house to ensure that you integrate fully into school life and get to know our day students in addition to the boarders. Each day house is run by a Housemistress or Housemaster who will oversee your academic progress and support you in your school life. If English is your second language this also helps to provide lots of opportunities to make friends with British students and improve your English quickly.

Junior Houses

- Baines House - Mr Burt (Housemaster)
- Brownlow House - Mrs Goodman (Housemistress)

Senior Houses

- Arundell House - Miss Lee (Housemistress)
- English House - Mrs Nugent-Willis (Housemistress)
- Fielding House - Mr Lord (Housemaster)

Tutor

Within your day house each year group has a Tutor. This is a member of the teaching staff who you will see daily and who will monitor your academic progress closely. This person that you will spend tutor time with. You should speak to them with any questions or concerns about your timetable or school subjects.

St Mary's History

St Mary's is situated in the house named The Priory. It is so named as the stones that were used to build the house were saved from the derelict Priory in the valley after which Prior Park is named.

The Priory was built by Richard Jones - an apprentice to John Wood the Elder (the architect of Prior Park) for Ralph Allen's gardener. When Bishop Baines started the College in 1830, he was not quite ready for the students as they arrived, so the Priory was used to house them for a short while until the main boarding areas were ready. Thomas Abbott being the first ever student at Prior, slept in The Priory.

The Priory has had many inhabitants over the decades, most famous perhaps was Lady Henrietta Crewe who Bishop Baines converted to Catholicism. It was also home to soldiers and officers during WW1 when the entire College was taken over for soldiers to recuperate, train and prepare for the Frontline.



St Mary's Social Media Instagram

Follow us on Instagram @ppc_stmarysboarding

Our Instagram account captures updates and pictures of our wonderful St Mary's girls.



St Mary's Boarding Committee

The Boarding Committee exists to make sure that every girl has a voice and can contribute towards life as a boarder. That means giving feedback on things you love, things you want to change and ideas to improve boarding in St Mary's. Please approach these girls with any feedback, they will also come to you in small groups to make it easier for you. The Committee meets half termly so there are plenty of opportunities to get involved. Names and photos of the committee are outside the office.

U6 St Mary's College Prefects and Peer Mentors

A Peer Mentor is someone in the Upper Sixth who has been specially trained to listen to other students' worries and concerns. You can talk to them about anything.

A College Prefect is a member of the Upper Sixth who has been chosen to lead the College by example, showing leadership through qualities of kindness, commitment, and contribution to all aspects of school life.

We have several St Mary's ladies who are Peer Mentors and/or College Prefects. They are displayed on the notice board.

Boarding Principles

Self - Development

The development of the whole person and the communication of values are vital.

Respect

Being an open and trusting school means boarding is based upon mutual respect for all its members. Each boarder and each member of staff is to be treated as an individual and with respect by other students and by staff. Students are expected to listen to the House staff and respond positively to instructions and requests.

Trust

As a boarding community we thrive on trust for one another. This means always signing out when leaving the school premises and signing back in on returning. This also means we respect the belongings of others and do not take what is not ours. We are considerate of each other and punctual at all mealtimes and registrations.

Privacy

Each boarder has a right to privacy, and you must knock before you enter a bedroom that is not your own.

Kindness

Each boarder has the right to be able to work, play and relax free from abuse, intimidation, harassment, teasing and bullying. You should always speak to your House parent or another member of staff if you experience any unkindness in the boarding house. This is not your fault, and we can help you.

Equality for all

There is equality of opportunity and respect for all boarding students, regardless of ethnicity, culture, gender, or disability. As a boarding community we celebrate our diversity and believe it makes us better.

Positive learning environment

Each boarder should be able to learn and study in an atmosphere of positive encouragement. You should be able to complete your homework without being disturbed and are encouraged to be the very best you can be in the classroom.

Friendship

Each boarder is encouraged to develop healthy friendships both inside and outside of the boarding house, nurtured through shared experiences.

Keeping Boarders Safe

Every boarder should feel safe in the boarding house and in school. Prior Park College is committed to protecting children from maltreatment and preventing impairment to a child's health and development. This is called **safeguarding**.

If you feel unsafe or are concerned about anything, then you can speak to any adult at school about anything. However, there are five adults who have the job of keeping you safe. Mrs Burton, our Deputy Head Pastoral, Mr Sackett Assistant Head (Wellbeing) Mr Bond Assistant Head (Co-curricular) Miss Wickham (Head of Compliance), Mrs Holder (Head of Boarding) and Mr Lyon and Mr Dowler (Safeguarding Trustees).

You can of course also speak to your House parent, Tutor, Housemistress or one of your teachers.

The notice boards throughout the house also display information of where you can get help and support if you are worried or concerned about anything.

Complaints

If you are unhappy with something in boarding then please speak to your House parent, Mel. You can do this in person or by emailing stmarysboarding@priorparkschools.com or by messaging Mel on Teams. You can also speak to our Head of Boarding. You can do this in person or contact her on email at sholder@priorparkschools.com or on TEAMS.

Mobile Phones

We will require your mobile number so you can be contacted on outings and in case of an emergency. You can also use Microsoft Teams for contact via your school Microsoft 365 account.

In St Mary's, we ask you to be respectful to those around you and engage in socialising in person as often as you can. Outside of school mobile phones should not be used in the dining room during meals.

If you are in L3-U5 your phones will be collected before 9.30pm and stored overnight in a secure, lockable room, Sunday - Thursday. You can have your phone overnight on Friday and Saturday evenings.

There is a great deal of research that shows late night screen time can affect sleep and mood negatively. If you need to speak with your family or friends, you must do so before this time. If it is not possible for any reason, you must speak to house staff to make individual arrangements. There are dedicated rooms in the house where personal calls can be made, and privacy respected, and this is often welcomed by those who share a room.

Mobile Phone Parental Controls

You might consider agreeing with your parents what's appropriate for you to see online, the online world gives children access to a huge amount of information and services, but the scale of information available also means that there is content that is inappropriate for children.

What is or isn't appropriate is up to individual parents and carers to decide, and could be based on things like age, ability, beliefs and family values.

Parental controls allow you to block and filter upsetting or inappropriate content. They work across your phone network, individual apps and devices. Parental controls can help you to plan what time of day you can go online and how long for create content filters to block apps that may have inappropriate content.

Pocket Money

Your parents may provide pocket money to be held by Prior Park's Finance Department or you can give Houseparents' cash on return to boarding after home holidays. If you would like to withdraw some money for the weekend you need to notify Houseparents' before a Friday evening.

Details for your parents to pay into the Finance account for your pocket money.

Flywire <http://priorpark.flywire.com/>

or our bank:

Barclays

Sort Code: 20-47-06

Account No: 80736627

Ref: Surname Pocket Money

Identification Documents

All identification documents (passports, BRP cards, visas, and any travel documents) that you have must be handed in to Mel. They will be stored in a safe and copies taken so that we have electronic back up. This is a requirement, regardless of age. When you require these, you will sign these out by signing and printing your name. You will do the same when you hand them back in.

ID cards can easily be obtained as an alternative form of proof of age for students to have with them for trips out. Mel can help with this.

Post

St Mary's girls seem to love post! If you are planning to have items sent to you from home or from any location it is important that the person who sends it to clearly labels it as follows:

Your Name
Prior Park College
The Priory, St Mary's House
Ralph Allen Drive
Bath
BA2 5AH

Your post will initially be delivered to the school reception in the Mansion, then House staff will bring your post to St Mary's, you will be notified, and you can then collect your post from a member of the house team from the boarding office. Post must be opened in front of a member of staff for health and safety reasons.

Travel Information

We require your travel information for every half term and school holiday from your parents or guardians. An online travel form will be sent to your parents/guardians which will help us collate this information. It is essential that we have this information, particularly for those of you who are full boarders as it is the school's responsibility that you have secured all travel and appropriate accommodation over the school holidays.

Planning Your Travel to School

Once you arrive in the UK you will want to find the most comfortable route to get to school so that you can settle into your accommodation. Depending on when you arrive, and where you enter the country, you may be able to take advantage of the Airport Transport Service (selected days only) so have a look and see if this is an option for you. If you can't book onto the Airport Collection Service contact transport@priorparkschools.com

Plan Ahead

Getting to Bath can be a long journey, so it's wise to plan ahead. Know each stage of your journey to school before travelling. Tickets on the day in the UK can be much more expensive than buying in advance. Booking ahead also guarantees availability. Buy food and drink before you travel, larger airports and stations have good food choices, but there may not be any food outlets open onboard or when you arrive. Please be aware there may be restrictions on whether you can eat or not on public transport. Carry a refillable water bottle, UK tap water is safe to drink.

Travel Light

Only carry the necessities for your journey and first few days on arrival. Limit luggage to what you can carry and move around by yourself. You can send luggage direct to school, to arrive after you move in (note the school will not accept advance freight of your luggage and cannot store shipped luggage for you in advance of your arrival). We can only store a maximum of 2 suitcases per person.

Keep in Touch

Carry a UK enabled mobile phone and UK power adapter (many airports, stations, trains and coaches offer free charging points) or spare battery pack. Have the full UK address (including postcode) for the school. Have the school emergency contact numbers.

Train Services

There are frequent services from London, Bristol and South Wales to [Bath Spa Railway station \(BTH\)](#).

Visit nationalrail.co.uk or trainline.com for train timetables, fares and cheap advance tickets.

Rail Updates

Visit the websites of the main rail operators in the Bath area for the latest travel updates:

[Great Western Railway](#)
[Transport for Wales](#)
[South Western Railway](#)

You can also visit National Rail to find the dates of any [upcoming rail strikes](#) that could affect your journey before you buy a ticket for a University event.

Coach and Bus Services

Visit [National Express](#) to plan journeys to Bath. There are frequent daily services between London Victoria, Heathrow Airport and Bath. You can also plan journeys by bus and coach using [Traveline South West](#).

Air Travel

- Bristol International Airport

Our nearest airport is [Bristol International Airport](#). The [A4 Air Decker bus](#) service will take you directly from the airport to Bath. You can also catch the [Bristol Flyer Airport Express](#) from the airport to [Bristol Temple Meads](#) rail station to travel to

Bath by train.

- London Airports

There are regular connections by rail and coach from [London Heathrow](#) and [London Gatwick](#).

Taxi options for Airports

If you would like to book a taxi with our trusted taxi services please email the Transport Team transport@priorparkschools.com

You will need to provide your time of arrival, airport terminal number, flight number and number of people travelling per booking. You will need to pre-pay in advance and a car will meet you at your arrival airport. Please note you will also need to make a provisional booking to cover any additional airport parking charges, which can be refunded if your plane lands on time.

Boarding Induction and Support

On arriving at St Mary's, you will be provided with an induction to boarding. This means we will help you learn everything you need to know to be safe and enjoy boarding life. It is important that you ask questions if you are unsure about any of the below.

Our boarding induction will cover the following:

- ✓ **Introduction to your House parent and Resident Tutors**
- ✓ **Who to speak to at school if you are unhappy or worried**
- ✓ **The difference between your House parent, Housemaster/Housemistress and Tutor**
- ✓ **Tour of the House**
- ✓ **How to sign in and out of the House**
- ✓ **Explanation of daily routines - meal timings and registrations**
- ✓ **When to use the shower blocks**
- ✓ **What to do in a fire**
- ✓ **What to do if something in your room is broken**
- ✓ **How to purchase School uniform**
- ✓ **How to do your laundry**
- ✓ **How to manage your pocket money**
- ✓ **How to store your own food in the kitchen**
- ✓ **Expectations for room tidiness**
- ✓ **How to be a considerate roommate**
- ✓ **What to do if you feel unwell in the day/night**

Health and Wellbeing Centre

No medicines can be stored in your bedroom or kept on your person, unless you have arranged to do this with our Lead Nurse. All medicines should be declared upon arrival to Prior Park and handed in to your House parent or the Health and Wellbeing Centre. This includes any form of pain relief, over-the-counter medicines, and prescription medication.

The Health and Wellbeing Centre is open at the following times:

- **Monday-Thursday - 8am-6pm**
- **Friday - 8am-5pm**
- **The duty Resident Staff member will assist at the weekends**

You can contact the Health and Wellbeing Centre by emailing healthcentre@priorparkschools.com or calling 07584016034

Doctor appointments are available every Friday morning, please speak to the House parent or Nurse if you need an appointment.

Counselling appointments are also available with Jan Robertson. Speak to your Tutor, Mel or Nurse to book an appointment or email counselling@priorparkschools.com.



A Day in the Life of a Boarder

Below shows you what a typical day for a boarder at Prior Park is like.

Wake Up

7:00am

Breakfast

7:30am L3 - F4

7:40am L5 / U5

7:50am L6 / U6

School Day

8:30am - 8:55am	Morning Registration
9:00am - 9:35am	Period 1
9:35am - 10:10am	Period 2
10:20am - 10:55am	Period 3
10:55am - 11:30am	Period 4
11:30am	Breaktime
11:55am - 12:30pm	Period 5
12:30pm - 13:05pm	Period 6
13:05pm	Lunchtime
14:15pm - 14:30pm	Afternoon Registration
14:35pm - 15:10pm	Period 7
15:20pm - 15:55pm	Period 8
15:55pm - 16:30pm	Period 9
16:45pm - 17:45pm	Activities

After School

6:00pm - 6:30pm	Boarders Supper	6:45pm - Registration in St Mary's
7:00pm - 9/9:30pm	Evening Prep/Free Time	
9:00pm	Night Prayers L3 - F3	
9:30pm	Night Prayers F4 - U6	
9:15 - 10:30pm	Bedtimes	

Evenings in St Mary's

Monday	Free time, house activity
Tuesday	Free time, house activity
Wednesday	Free time, house meeting
Thursday	Free time, house activity
Friday	Free time, Movie Night
Saturday	Evening House Activities - these change weekly
Sunday	Chapel at 5:30pm, bed change, free time and prep for school

St Mary's House Facilities

St Mary's Garden

St Mary's Boarding House is known as The Priory, and this is on the boundary of the famous Prior Park Landscape Gardens of the College. You have a private patio and lawn, which is for you to work, relax or socialise. There is the option to play sports and activities such as badminton, boules, volleyball, swing ball and much more in the lovely, grassed area. This is also a space where you will enjoy one of our many BBQ's, house picnics and social gatherings in the evenings and weekends.

Prep Room

St Mary's has a dedicated prep room for L3-L5 to work with good Wi-Fi, printing facilities and ample desk space.

U5-U6 you can study at your desk in your room, however, there is a Chapel Room downstairs dedicated if you prefer a different working environment or would simply like to relax quietly or read.

Evening prep sessions are overseen by House staff and sixth form.

Kitchen Facilities

There is a senior and a junior kitchen in St Mary's and you have access to drinks, toasters, and snacks. You can also store a small number of items in fridges and freezers if you plan to bake or cook in an evening or at the weekend. Snacks are available every evening which include a variety of sweet treats and healthy fruit options.



Laundry Room

If you are in the Sixth Form, you take responsibility for your own laundry in the boarding house. We have two washing machines and three dryers. A Rota is created for Sixth Form to take turns doing their washing and drying.

Year groups 7 - 11 take their dirty washing to a laundry room on the way to breakfast, where their clean clothes will be available to collect the next day.

TV Room and Gaming Room

We have two TV/Social rooms in the house. These are great areas to relax, unwind and hang out with friends. Each space is kitted out to provide a welcome break at the end of a busy day, with Smart TV's, a projector for film nights, Nintendo and plenty of games, puzzles, and other evening entertainment for you.

House Prayer

Every night before bed at 9pm for junior boarders and 9:30pm for girls in year groups F4-U6 we have night prayers. We take the register to make sure everyone is back in the boarding house, then we say a prayer written by one of the girls, and finally we all say Hail Mary together.

The Hail Mary is a Catholic prayer where the mother of Jesus is asked to pray on our behalf. If you do not feel comfortable saying it you can simply bow your head and have a quiet moment.

Hail Mary

*Hail Mary, full of grace,
the Lord is with thee.
Blessed are thou amongst women
and blessed is the fruit of thy womb, Jesus.
Holy Mary, Mother of God,
pray for us sinners now
and at the hour of our death.
Amen.*

Ignatius of Loyola 1491-1556



'Teach us, good Lord, to serve you as you deserve, **to give and not to count the cost**, to fight and not to heed the wounds, to toil and not to seek for rest, to labour and not to ask for any reward, save that of knowing that we do your will.'

St Mary's also counts the prayer below as special to the boarding house, because of the emphasis of considering and serving others. This selfless approach is central to our boarding house.

Things to bring checklist

When we asked the girls what they have found most useful this is what they said...

Items allowed:

- ✓ Pictures of friends and family (to decorate your pin board)
- ✓ Decorations for your pin board (e.g., bunting)
- *Please note plug in fairy lights are not allowed as they are a fire hazard, however, you can use battery operated fairy lights*
- ✓ Stationery for the school day
- ✓ Post it notes or a mini whiteboard (for your to do lists)
- ✓ 2 phone chargers (one always gets lost!)
- ✓ 2 towels
- ✓ 1 laundry basket
- ✓ 1 re-usable shopping bag (for trips to the local food shops)
- ✓ Air-tight containers (for storing any personal snacks)
- ✓ Name labels - to label ALL of your items including underwear and socks
- ✓ You may choose to bring your own pillow, duvet with your own duvet cover and pillowcase. Please ensure these are named

Prohibited items:

- × Microwave Oven
- × Toasters
- × Iron
- × Kettles
- × Portable Kettles
- × Rice Cookers
- × Air Fryer
- × Candles, Matches or Lighters
- × Electric Blanket
- × Flammable Liquids and Accelerants
- × Portable Fan Heater
- × Mug Warmer
- × Single Cup Water Heater
- × Space Heater
- × Electric Fire
- × Extension Cables

Confiscation of unsafe electrical items

If staff carry out a room inspection or clean and notice that you have an electrical item without the correct CE safety mark, we will remove it immediately. We will leave a notice to contact House parent's. The item will be stored until you move out, when you'll need to collect it at the end of term. We will dispose of any items left behind.

Frequently asked questions

What time will I go to bed?

	In rooms	Lights out
L3	9:00pm	9:15pm
F3	9:00pm	9:15pm
F4	10:00pm	10:15pm
L5-U6	10:15pm	10:30pm
L6-U6	10:15pm	10:45pm

What if I want to go to the local shop?

Prior Park College is in Combe Down in Bath. In Combe Down there is a convenience store called the co-op. It is like a mini supermarket. If you want to visit the co-op after School at 4:45, you should sign out with the duty staff in the office. You must return by 5:45pm and sign back in at the office. The regularity of local shop visits will be monitored by house staff to ensure that you maintain a good, healthy, and balanced diet. If there are concerns, this will be raised with you individually.



Open the QR codes for directions

How do I get to Bath Spa train station?

There is bus stop opposite the Prior Park entrance gates where you can get a bus (number 2) to the bus station, this bus journey takes approximately 15-20 minutes and is a 2-minute walk from the train station. A single, student bus ticket is approximately £2 and you can pay with a contactless card or cash. Train times are available on the national rail website - <https://www.nationalrail.co.uk/>



Can I go into the centre of Bath after school on a weekday (Mon-Thurs)?

If there is a valid reason or a one-off emergency request then this is possible however, this would need to be discussed with Mel as this is not something that is encouraged on a school night.

Can I go out to town for dinner on a weekday (Mon-Thurs) with my friends?

If this is a special occasion, such as a birthday or a family member's visit, then this can be arranged and added to the House diary. You will be allowed to sign out from 4.45pm and then be required to return by 8:30pm. This must be communicated in advance to Mel and agreed. If schoolwork is not up to date or behaviour has not been to a high standard, then Mel may not agree to this request.

Can I stay overnight at a friend's house?

Yes, this is possible at the weekend if the following details are provided to Mel **by both parents/guardians by the Thursday before that weekend:**

1. An email from your parent or guardian to agree the overnight stay.
2. Destination of the overnight stay - full address and contact number
3. Time of departure from school (you must sign out with the duty tutor) and time of return to school (you must sign in with the duty tutor)
4. An email from the hosting family - a parent or adult that will be present during your stay.
5. If this is a party, then an agreement that no alcohol or drugs will be present, and this will be overseen by an adult.

When can I have access to the boarding house?

Access to St Mary's is not allowed between 9am and 4:30pm. This means you must be organised in the morning before school and ensure you have all that you need for the day. During the school day you will have access to your day houses along with the other day students. This ensures that you are as integrated as possible and make the most of all the opportunities available to you.

Where can I store food?

You can label your food with a permanent marker and store your items in one of the two kitchens. Food is not to be stored in your room and food should not be eaten in your rooms.

Can I order a takeaway?

Fridays and Saturdays are takeaway evenings at Prior. You must let the member of staff on duty know that you are going to order food. You are permitted a maximum of two takeaways per week. This is to try and make sure that you maintain a healthy, balanced diet.

What do I do if I feel unwell?

We have a Health and Wellbeing Centre on the School site which is open 8am-6pm Monday-Friday, with a team of nurses who can assess you. On weekends, please see the member of staff on duty in the boarding house who can help you. Mel is also a qualified paediatric nurse, and you can contact her at any time.

There are also weekly doctors' visits on a Monday. But if for any reason you would like to see a doctor on another day, Combe Down Surgery is only a 10-minute walk away. The Health and Wellbeing centre nurses can book an appointment for you and accompany you to the appointment if required.

What do I do if I feel homesick, sad, or anxious?

Firstly, it is normal to experience homesickness and times of sadness or worry. The best thing you can do is tell someone else how you are feeling. You can do this in person or via Teams.

There is so much support for you in St Mary's, speak to Mel or one of the resident tutors. You can also speak to the team in the Health and Wellbeing Centre or your Tutor/Housemistress in your day house.

We are here for you, anytime.

A very warm welcome to St Mary's boarding house, be excited because you have just begun an amazing adventure. If you have any questions after reading this booklet - please do not hesitate to contact Mel.





Prior Park
College

Ralph Allen Drive, Bath BA2 5AH

Tel: +44 (0)1225 835 353

priorparkcollege.com