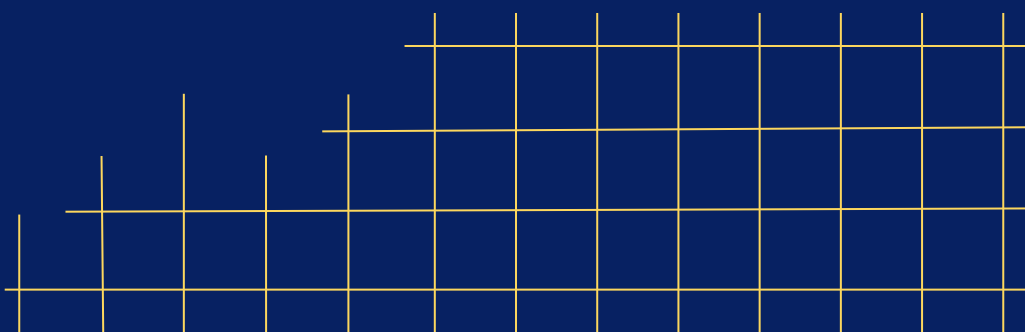


Focused on Learning for Every Student Every Day.



# Welcome...

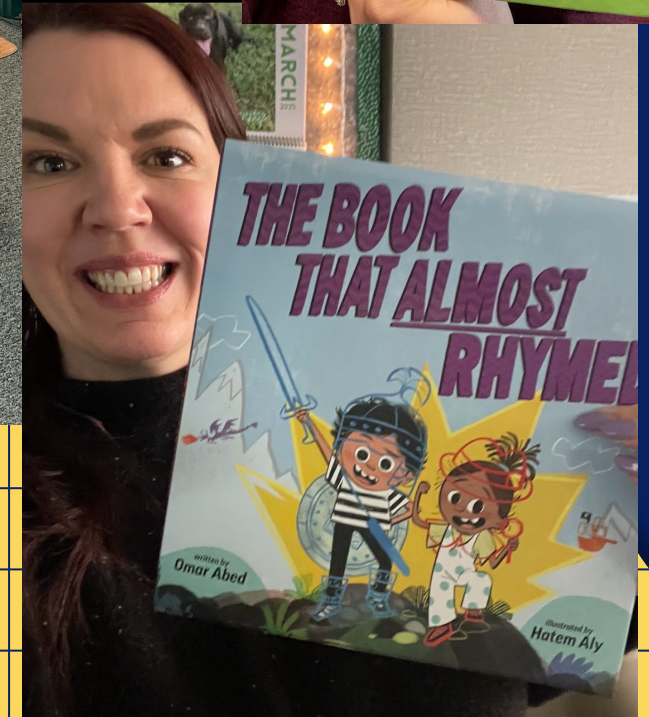
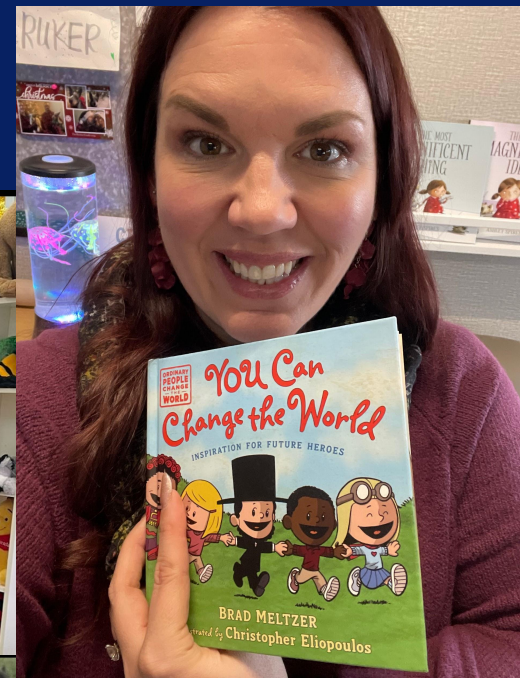
## To KinderCamp 2025



# Hello! I'm...

Mrs. Jenna Rucker  
School Principal

I'm heading into my 6th year at  
Richland Elementary School and  
my 12th year in administration  
and my 18th year in education!





# Today we will...



Get to know your school  
and get to know each  
other!



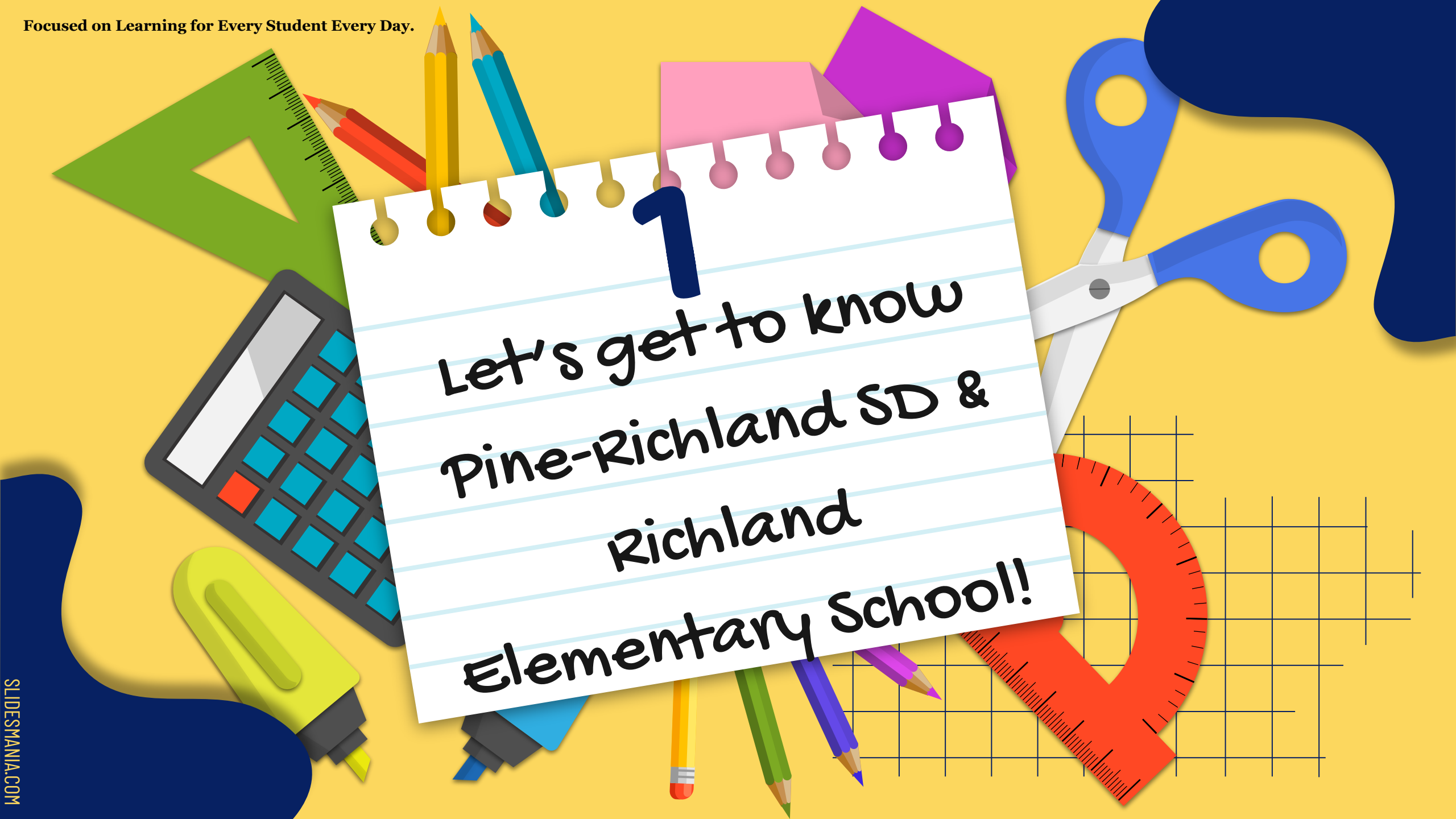
Connect with PTO, sign up  
for opportunities to  
volunteer



Hear about all the great  
learning experiences your  
child had in their sessions,  
and a bit about kindergarten



Light Refreshments, talk  
with PTO, connect with each  
other, BOOKS, then  
reconnect with the kids!



1  
Let's get to know  
Pine-Richland SD &  
Richland  
Elementary School!





Pine Richland School District Mission: Focus on Learning for Every Student Every day

# Do you know our district Administration?

## Superintendent

Dr. Brian Miller

Superintendent



School: [724-625-7773](tel:724-625-7773) ext. 6101

Barbara Williams

Superintendent's Administrative Assistant and  
Board Secretary



School: [724-625-7773](tel:724-625-7773) ext. 6100

## Assistant Superintendents

Dr. Kristen Justus

Assistant Superintendent of Elementary Education  
and Curriculum



School: [724-625-7773](tel:724-625-7773) ext. 6121

Dr. Michael Pasquinelli

Assistant Superintendent of Secondary Education  
and Curriculum



School: [724-625-7773](tel:724-625-7773) ext. 6111



# Do you know our district Administration?

## Special Education and Student Services

Dr. Maura Paczan

Director of Student Services



School: [724-443-1558 ext. 6503](tel:724-443-1558)

Dr. Greta Kuzilla

Assistant Director of Student Services and Special Education



School: [724-443-1558 ext. 6502](tel:724-443-1558)

Dr. Alysha Kaparakos

School Psychologist—K-6



School: [724-443-1558 ext. 6508](tel:724-443-1558)

Dr. Taylour Kimmel

School Psychologist—K-6



School: [724-443-1558 ext. 6505](tel:724-443-1558)

Dr. Melissa Ramirez

School Psychologist



School: [724-443-1558 ext. 6504](tel:724-443-1558)



Click the Box for a link to  
our Special Education  
Page

# Did you know?

## PR By the Numbers\*



**4,519**  
Students K-12



**522**  
Full-time Employees



**338**  
Teachers



**105**  
Bus/Van Drivers



**49**  
HS Clubs/Activities



**25**  
Athletic Teams 7-12



**17**  
MS Clubs/Activities



**6**  
Schools

*\*as of June 30, 2024*



# Secondary Schools

## [Pine-Richland High School](#)

700 Warrendale Road

Gibsonia, PA 15044-6040

Telephone: 724-625-4444 | Fax: 724-625-4640

Principal: Dr. Frank Hernandez

Grades 9-12 (Enrollment: 1,436)

Hours: 7:45 am – 2:36 pm



## [Pine-Richland Middle School](#)

100 Logan Road

Gibsonia, PA 15044-6040

Telephone: 724-625-3111 | Fax: 724-625-3144

Principal: Dr. David Kristofic

Grades 7-8 (Enrollment: 698)

Hours: 7:45 am – 2:36 pm



# Upper Elementary School

## [Eden Hall Upper Elementary](#)

3900 Bakerstown Road

Gibsonia, PA 15044

Telephone: 724-443-1450 | Fax: 724-443-1451

Principal: Mrs. Colleen Berezo

Grades 4-6 (Enrollment: 1,036)

Hours: 8:35 am - 3:10 pm





# Lower Elementary Schools

## Hance Elementary School

5518 Molnar Drive  
Gibsonia, PA 15044  
Telephone: 724-443-1541 | Fax: 724-443-1290  
Principal: Mrs. Paula Giran  
Grades K-3 (Enrollment: 426)  
Hours: 9:20 am – 3:50 pm  
Kindergarten Hours: 9:20 am – 12:00 pm (AM) | 1:00 pm – 3:50 pm (PM)



## Richland Elementary School

3811 Bakerstown Road  
Gibsonia, PA 15044  
Telephone: 724-443-1558 | Fax: 724-443-2180  
Principal: Mrs. Jenna Rucker  
Grades K-3 (Enrollment: 481)  
Hours: 9:20 am – 3:40 pm  
Kindergarten Hours: 9:20 am – 12:00 pm (AM) | 1:00 pm – 3:50 pm (PM)



## Wexford Elementary

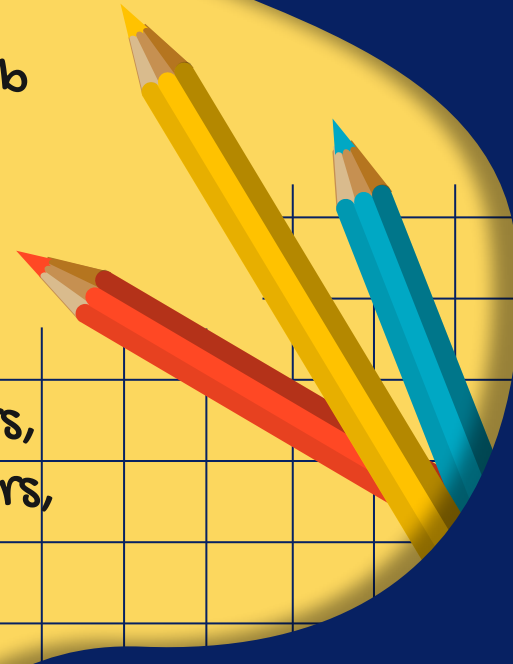
250 Brown Road  
Wexford, PA 15090-8558  
Telephone: 724-935-4631 | Fax: 724-935-3733  
Principal: Mrs. Kelly Gustafson  
Grades K-3 (Enrollment: 442)  
Hours: 9:20 am – 3:40 pm  
Kindergarten Hours: 9:20 am – 12:00 pm (AM) | 1:00 pm – 3:50 pm (PM)



# Did you know?

Richland Elementary School is the original High School of the district?

- A K-3 Public School serving students in the Gibsonia area
- Home to almost 500 students in kindergarten through third grade ; Richland is home to our K-3 District Autistic Support Hub
- Class size typically ranges from approximately 18-25 students
- Typical number of homeroom teachers (K-3) is approximately 21-23 with usually 5-6 sections per grade level
- Approximately 35-40 additional staff members, including the office staff, nurses, School counselor, special education teachers, reading specialists, intervention specialist, special area teachers, speech pathologist, occupational therapist, physical therapist, para-educators, cafeteria staff, and custodial staff



Click [HERE](#) to visit our HomePage and [HERE](#) to visit our News!



# Did you know?

We've been making upgrades to our building and learning spaces:

- We have a new playground as of summer of 2023
- A new entryway mural as of Spring of 2022
- A newly renovated Library as of Summer of 2022
- Summer 2025 starts phase 1 of 2 of a 5 million dollar HVAC update across the building

Click [HERE](#) to visit our HomePage!





# Did you know?

A few of our recent spotlights:



**BEST**  
ELEMENTARY SCHOOLS  
**U.S. News** & WORLD REPORT  
2024

**Spotlight on Learning**

In its 2024 rankings of K-8 schools, *U.S. News and World Report* named Richland Elementary School #4 and Wexford Elementary #6 out of nearly 1,600 elementary schools ranked in Pennsylvania.

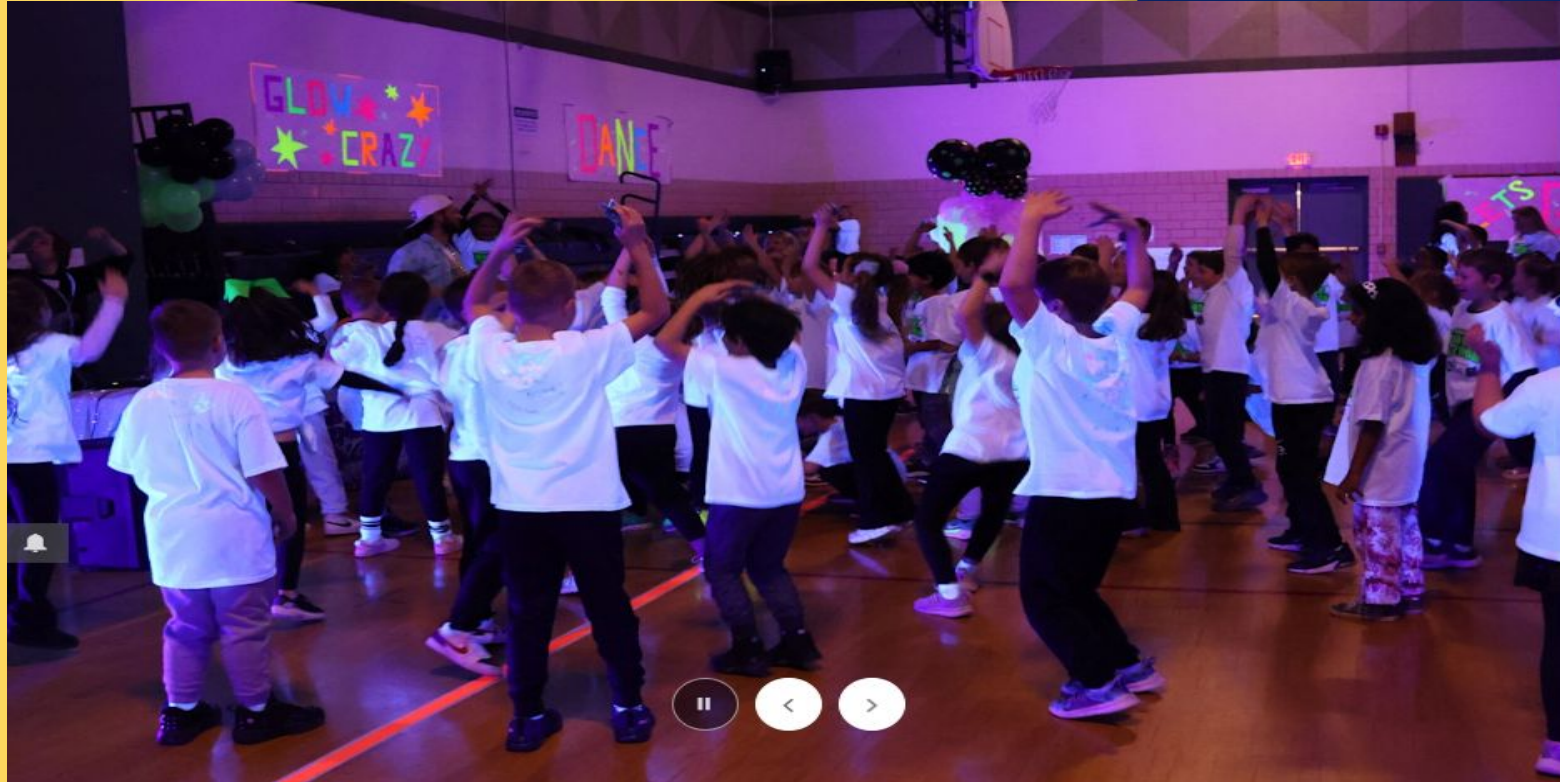
[LEARN MORE](#)





# Did you know?

A few of our recent spotlights:



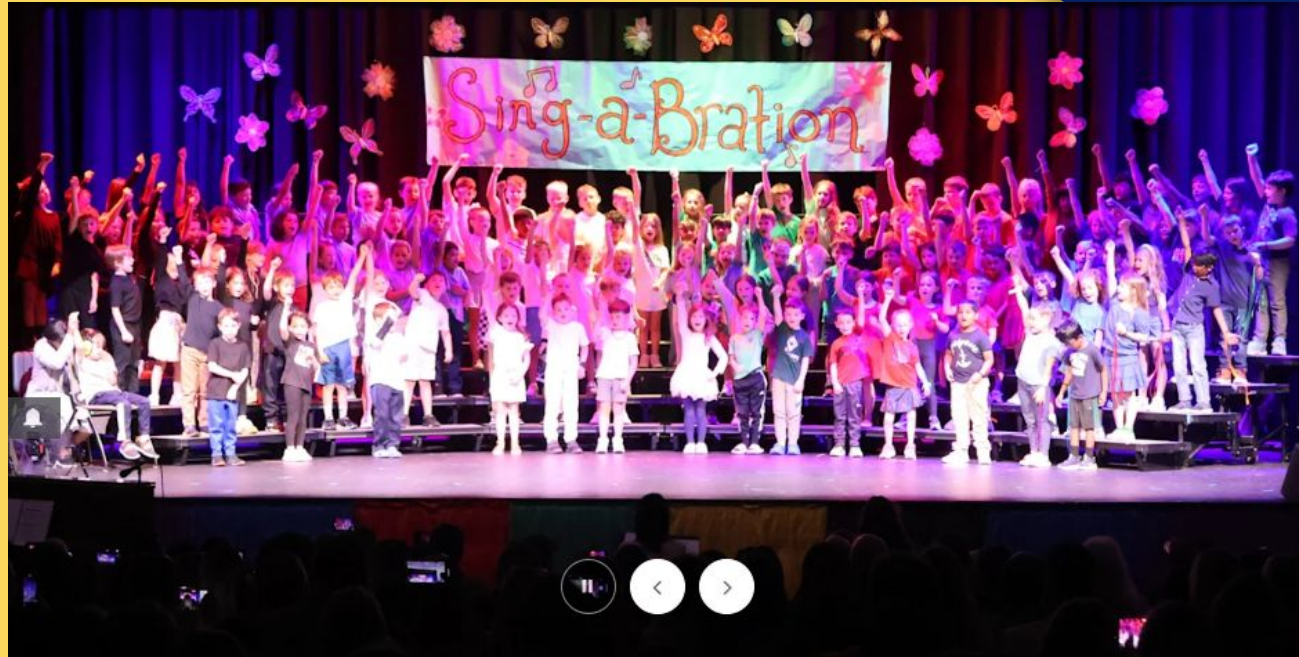
## Spotlight on Learning

Students at Richland raised over \$18,000 for PTO programming and celebrated with a glow-themed Move-a-Thon in February, complete with dancing, activities, painting and games.




# Did you know?

A few of our recent spotlights:




**Spotlight on Learning**

First graders at Richland Elementary performed in their annual Singabration on May 19. This year's seniors who attended Richland were invited back to see this year's singers and also enjoy video from their performance in 2014.



# Did you know?

A few of our recent spotlights:

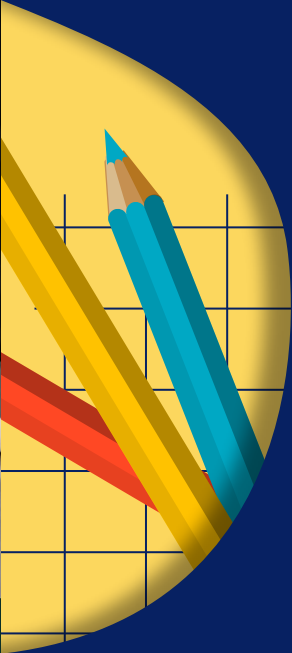



|| < >

## Spotlight on Learning

Congratulations to second-grader Caroline, who won the Sodexo Future Chefs competition on March 13 with her recipe, *Caroline's Delectable Lamb Gyros*.

LEARN MORE





# Did you know?

A few of our recent spotlights:



## Spotlight on Learning

Richland's third graders participated in a science fair in early March.





# Did you know?

A few of our recent spotlights:



## Spotlight on Learning

Richland Elementary students participated in Veterans Day activities include writing projects, an assembly and food drive to recognize and honor our community members who have served.



# Did you know?

A few of our recent spotlights:



## Spotlight on Learning

Thanks to artist Tiffani Jakovac and the PTO, students at Richland Elementary School have a new colorful mural to enjoy in the school library.



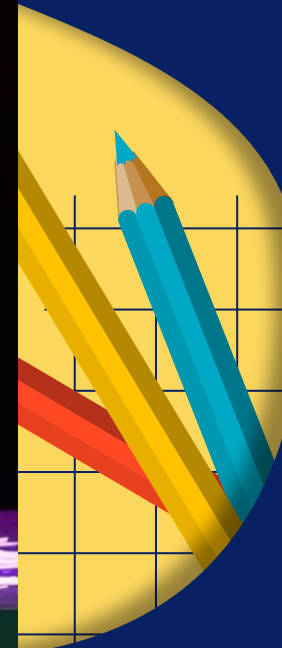
# Did you know?

A few of our recent spotlights:



## Spotlight on Learning

Richland students were treated to a character-building assembly featuring Jon Pritikin who talked to the kids about his experiences overcoming a speech problem and bullying. One of the world's strongest men and Guinness World Record Holder, Mr. Pritikin entertained the students with feats of strength, including tearing a phone book in half, while reinforcing his message that everyone can be a hero.





1

Let's get to know  
EACH OTHER!



# Do you know our office team?

## Mrs. Gina Hoffman

Year round office secretary

Can answer or guide you on any needs throughout the school year and summer

Extension 4802 when you call the building number (724)442-1558



## Mrs. Nikki Woodrow

Ten month office secretary

Focuses on attendance - daily calls and records, letters and truancy compliance

Extension 4801 when you call the building number (724)443-1558



# Hello! I'm...

Mrs. Beth Cassandro ~ Certified School Nurse

Health Office Hours

Monday through Friday

8:30 am to 4:15 pm

724-443-1558, Ext. 4805

[bcassandro@pinerichland.org](mailto:bcassandro@pinerichland.org)

PR Website

"Parent Resources"

"Health Services"



I'm heading into my 16th  
year here at Richland  
Elementary School!

# Examinations

- The following examinations are mandated by the state of Pennsylvania and may be performed by your child's personal physician or dentist:

- Physical examinations — K, 6<sup>th</sup> and 11<sup>th</sup>

- Dental examinations — K, 3<sup>rd</sup> and 7<sup>th</sup>

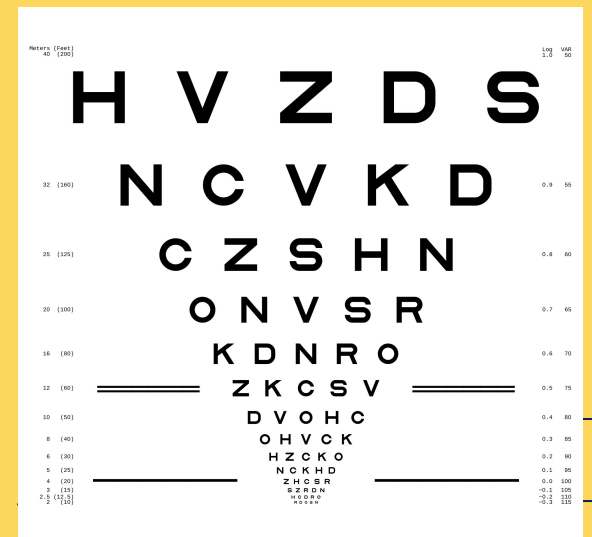
- \*\*School examinations — available upon request and also done if a private examination is not returned

## Immunizations

- Five required series - Dtap, Polio, HepB, MMR, & Varicella
- Five day provisional enrollment
- Types of exemption: Medical, Religious & Moral/Philosophical
- Documentation — the sooner the better!

# State Mandated Health Screenings

- Each student is weighed and measured every year. In addition, a Body Mass Index (BMI) for age percentile is calculated on all students.
- Each student has a near and far vision test every year.
- Each student has a hearing test in kindergarten through third grade and in seventh and eleventh grades.
- Mass Screening, Referrals, and Communication.





# Medication Policy

- Medication must be accompanied by a medication permission form which includes a physician and parent/guardian signature.
- Medications are not available in school unless provided by parent/guardian in the original container.
- This includes over the counter medication.
- Forms are available from the nurse or district website.



# Sick Guidelines

- Please consider the following guidelines when making the decision to send your child to school:
  - Fever of 100 degrees or higher: children should be fever free for 24 hours without fever — reducing medication.
  - Uncontrollable coughing.
  - Vomiting/Diarrhea: children should be free of symptoms for 24 hours before returning to school.
  - Inability to sleep most of the night because they don't feel well.
- Infectious Diseases:
  - Follow the AGHD Guidelines.



# Contact Information

Health Office Hours

Monday through Friday

8:30 am to 4:15 pm

724-443-1558, Ext. 4805

[bcassandro@pinerichland.org](mailto:bcassandro@pinerichland.org)





# Do you know our School Counselor?

Mrs. Amy Molitor: [amolitor@pinerichland.org](mailto:amolitor@pinerichland.org)

- Individual Counseling
- Group Counseling
- Classroom Lessons
- Educational Support - MTSS
- RAMS Way Team Coach
- SO4 Plan Case Manager
- SAP Team Leader



# Do you know our School Counselor?

Mrs. Amy Molitor: [amolitor@pinerichland.org](mailto:amolitor@pinerichland.org)

## School Counseling - K-12 Tier I Lessons

### School Counseling Lessons - Kindergarten

#	Lesson	Time	Location	Teacher's Role
1	<a href="#">Promoting Good Emotional, Physical, and Behavioral Health</a>	30 Minutes	General Education Class	Observe/Assist
2	<a href="#">Internet Safety &amp; Cyberbullying</a>	30 minutes	General Education Class WEX/HA Library RES	Observe/Assist
3	<a href="#">Resiliency (trusted adults &amp; bucket filling)</a>	30 minutes	General Education Class	Observe/Assist
4	<a href="#">Career Education &amp; Work</a>	30 minutes	Library	Observe/Assist

[RETURN TO MAIN TABLE OF CONTENTS](#)

opt in model

## ▪ Safety Procedures

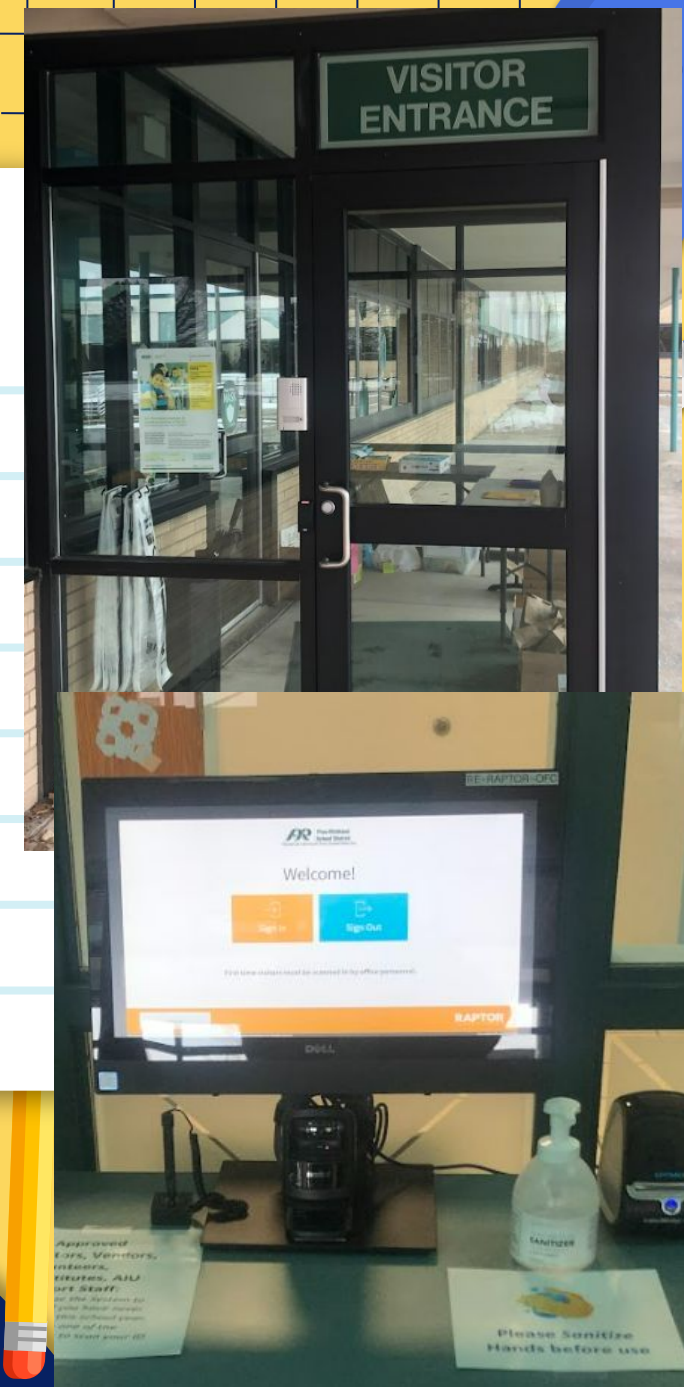
- ❑ Building locked
- ❑ Ring bell to enter
- ❑ Must sign-in with license and have a visitor's badge (ID)
- ❑ Office staff will get your child

## ▪ Early Dismissal

- ❑ Send a written note or email or upload into Sapphire
- ❑ Ring bell to speak to front office secretaries - Office staff will get your child

## ▪ Odds and Ends

- ❑ Backpacks labeled
- ❑ Written excuse when absent - upload to Sapphire
- ❑ Written note for any change in dismissal i.e. riding home with a friend via car or bus.





# School Security Team:

**Brad Nowosielski - NRPD Officer - PRHS**

**Kori Phillips - NRPD Officer - PRMS**

**Sonny Litwiler - NRPD Officer - EHUE**

**David Harajda - School Security Officer - HES**

**Judy Wolverton - School Security Officer - RES**

**Jason Zak - School Security Officer - WES**

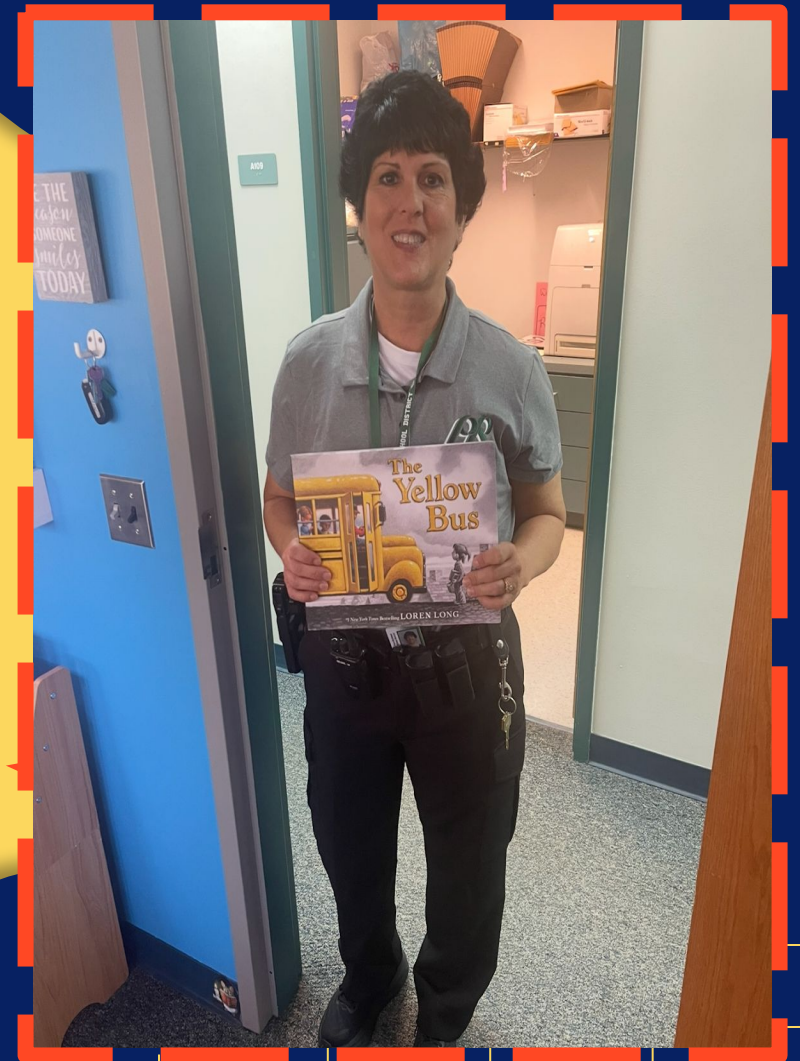
**Brooke Huff - Safety and Security Technologist**



# Officer Judy: New for 24-25 school year

Responsibilities (not limited to):

- form relationships across the building
- armed security for the building
- lead and support safety drills
- situational awareness for campus
- stay trained and train others on safety protocols and expectations
- indoor and outdoor security



Visitor Policy - click [HERE](#)





# Office Team Contact Information:



Jenna Rucker- Principal

[jerucker@pinerichland.org](mailto:jerucker@pinerichland.org)

Beth Cassandro - School Nurse

[bcassandro@pinerichland.org](mailto:bcassandro@pinerichland.org)

Amy Molitor - School Counselor

[amolitor@pinerichland.org](mailto:amolitor@pinerichland.org)

Judy Wolverton - School Security Officer

[jwolverton@pinerichland.org](mailto:jwolverton@pinerichland.org)

Gina Hoffman - Building Secretary

[vhoffman@pinerichland.org](mailto:vhoffman@pinerichland.org)

Nikki Woodrow - Building Secretary

[nwoodrow@pinerichland.org](mailto:nwoodrow@pinerichland.org)

# Do you know?

## Your Kindergarten Teaching

### Team:

Mrs. Becky Fickes - rm 112

[rfickes@pinerichland.org](mailto:rfickes@pinerichland.org)

Mrs. Janel Kilpela - rm 110

[jkilpela@pinerichland.org](mailto:jkilpela@pinerichland.org)

Mrs. Patty Kuremsky - rm 103

[pkuremsky@pinerichland.org](mailto:pkuremsky@pinerichland.org)





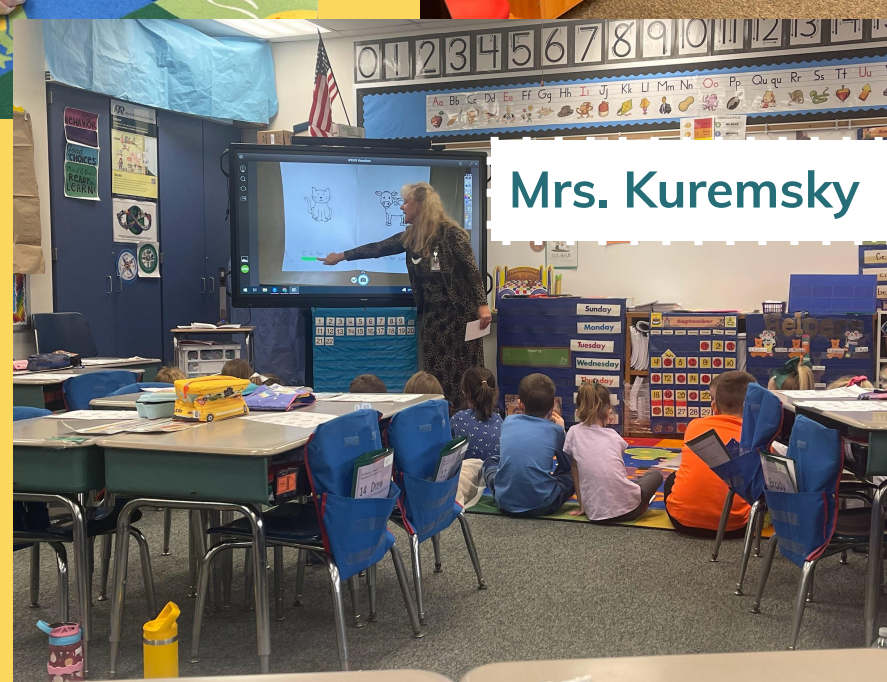
Focused on Learning for Every Student Every Day.



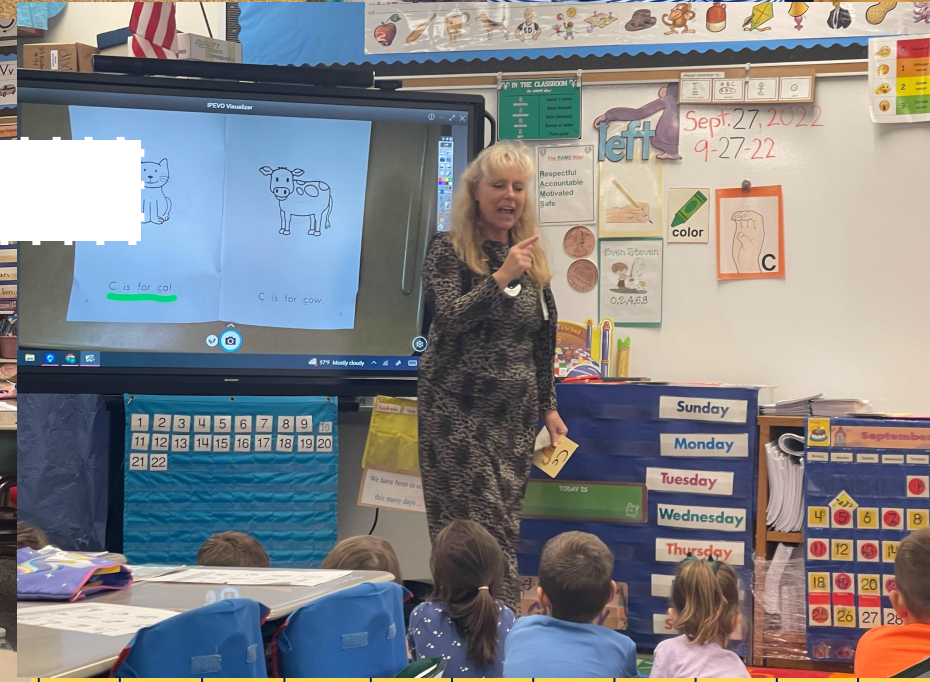
Mrs. Kilpela



Mrs. Fickes



Mrs. Kuremsky





2

Get connected to  
the PTO

# Did you know? The PTO does that!

## Student Enrichment

- Funding Assemblies and Field Trips
- Helping with RAMS WAY initiatives and School Store
- Coordinating After-School Programs such as Baker's Dozen, Spanish Enrichment Club, Kids of STEEL and MAD Science.
- Refreshing outdoor and indoor recess equipment
- Celebrating student birthdays with the Birthday Book Cart
- Coordinating Book Fairs, Holiday Shop, Family Fun Night and more.





# Did you know? The PTO does that!

## Staff Appreciation

- Providing Back to School Start-up funds for teachers.
- Classroom support for events and parties
- Supplying new books and classroom materials
- Organizing and providing Teacher Appreciation luncheons and celebrations throughout the year



RES has 2 staff lounges and a mailroom. Help us keep them stocked all year with our Amazon wish list.





# Did you know? The PTO does that!

## Fundraising

- Coordinating fundraisers such as Spirit Wear, Gift of Time and BLOOM flower sale.
- Organizing our Main PTO Fundraiser - Move-A-Thon
- Raising money for building improvements, curriculum materials, recess equipment, classroom needs and more



### Chick-fil-A Receipts

Turn in receipts you collect from the Wexford and Cranberry Chick-fil-A locations, and the PTO will be able to collect 20% of the totals to earn money towards school events. Place receipts in an envelope marked "Chick-fil-A PTO" and send to school.





# Did you know? The PTO does that!

## Building Community

- Hosting Family Fun Night, Movie Night and Heart Ball
- Organizing Dine Out Nights and Family Meet Up Days
- Assisting with School/Community Involvement such as Pine CC Earth Day, PR Days at Pirates/Penguins Games and more
- Food Drives and charity work throughout our community



## Take me out to the Ballgame!

Join us for a Pirates Game on Sunday, July 20 at 1:35pm a portion of ticket proceeds will go to RES PTO. Ticket info on social soon!



# The PTO Supports Summer Reading

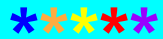
## Summer Playground Playdate!

Join us for summer storytime under the RES playground pavilion. Richland families are invited to meet on **July 16 from 10:30am - 12:00pm** for storytime, crafts, popsicles and playground play. Book donations for our playground library are encouraged! RSVP by emailing [ginamazzarese@gmail.com](mailto:ginamazzarese@gmail.com) by July 11.

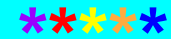




# Support The RES PTO by Volunteering



## Ways to Stay Connected



- Volunteer for an event - click link below or scan QR code
- Follow us on Social Media - **Richland Elementary PTO** on Facebook and Instagram
- Become a Classroom Parent - stay tuned in the Friday Flash
- Donate \$\$ or Supplies - Amazon wishlists QR code
- Support our Fundraisers
- Join a Committee - click link below or scan QR code
- Stay connected by signing up for Membership Toolkit - at info desk
- Any questions - email **richlandramspto@gmail.com**



RES has 2 staff lounges and a mailroom. Help us keep them stocked all year with our Amazon wish list.

## Click here to Sign Up



Scan to Volunteer

# Meet the 2025-26 PTO Executive Board

**President** - Jessica Kogut

**Vice President, Enrichment** - Kristen Schaffert

**Vice President, Membership** - Apryl Pratt

**Treasurer** - Kristen Trombetta

**Secretary** - Amanda Hammel

Email the board: [richlandramspto@gmail.com](mailto:richlandramspto@gmail.com)

Visit the RES PTO website to learn more.  
[bit.ly/RESPTOweb](https://bit.ly/RESPTOweb)



SCAN ME





# Register Today for Membership Toolkit



RICHLAND ELEMENTARY

PTO

Home

Our PTO

Calendar

My Account

Quick Links

Register/Login

Upcoming Events

Wednesday, August 20

First Day of School

Full Calendar



REGISTER TODAY FOR RICHLAND PTO NEWS!

We will keep you in-the-know with our newsletters, include your family in the directory, stay up-to-date on volunteering opportunities, and so much more - all online in one spot.

*\*Make sure to keep checking back as we continue making updates.*

Register/Login

You will be prompted to login. If you already have a Membership Toolkit account login with another organization, you can use the same log-in here.



FIRST PTO MEETING

Join us to kick-off the school year at our first PTO Meeting on **Wednesday, September 17th at 6:30pm (location TBD)**. We invite you to become involved at your child's school through the many opportunities provided by the Richland Elementary PTO.



Scan the QR Code to Register!

SLIDESHOWMANIA.COM

# Volunteer Policy - click HERE

## **Independent Volunteers**

**Direct contact with kids.**

**Need Clearances!!**

## **Assistive Volunteers**

**No unsupervised contact with kids**

**Training Sessions and information can be found on the district website.**

***\*Volunteers for cafeteria or other purpose outside of the classrooms are not permitted to go to classrooms during the school day.***

***\*\*For questions about clearances or the volunteer paperwork, please email Abby Cercone at the administration office - [acercone@pinerichland.org](mailto:acercone@pinerichland.org)***

## **Stretch Break:**

**Your goal is to meet someone new and possibly even exchange numbers to setup a summer playdate! Connecting with each other is a goal of KinderCamp!**

**When the video concludes, please return to your seats!**



**05:00**

3

What are the kids up to  
at Kindercamp and what  
will kindergarten look  
like?



# KinderCamp Learning Stations:

Simon Says - following  
directions and  
resiliency

Free Play - sharing,  
cooperation and  
communication with  
peers

Watermelon Cutting  
Activity - scissor skills

# KinderCamp Learning Stations:

Early Numeracy - do  
they know numbers  
and 1:1 correspondence

Self Portrait - following  
directions and  
speech/articulation

Story Reading -  
Comprehension and  
retell check

# Goals of KinderCamp:

Begin building relationships

Become familiar with Richland Elementary

Students to meet teachers and staff

Get a snapshot of students as learners

Provide feedback to families based on the skills that are observed

Help students experience the riding the bus!





# **School Year Kindergarten Information:**

# Daily Kindergarten Schedule: AM

		Day 1	Day 2	Day 3	Day 4	Day 5
8:30-9:00	30	Team Collaboration/Meetings				
9:10-9:20	10	Arrival Time for Students				
9:20-9:25	10 (5)	Read Aloud	Read Aloud	Read Aloud	Read Aloud	Read Aloud
9:25-9:55	30	95% & Heggerty	95% & Heggerty	Music - Cycle A	Library	Art - Cycle B
9:55-10:10	10	Science/SS	Science/SS	95% & Heggerty	95% & Heggerty	95% & Heggerty
10:10-10:40	30	RAM	RAM	RAM	RAM	RAM
10:40-11:20	40	Wonders	Wonders	Wonders	Wonders	Wonders
11:20-11:50	30	Math	Math	Math	Math	Math
11:50-12:00	10	Dismissal				

Schedule is a sample from the 2023-2024 school year:

# Kindergarten: AM

- Bus Transportation to School Only
- Arrival 9:10 am – 9:20 am - side auditorium doors
- Instructional Day Begins 9:20am
- Dismissal 12:00pm - do not arrive before 11:45 - Front Door pick up line (Auditorium)



# Daily Kindergarten Schedule: PM

		Day 1	Day 2	Day 3	Day 4	Day 5
12:30-1:00	30	Team Collaboration/Meetings				
1:00-1:15	15	Arrival Time for Students				
1:15-1:20	10 (5)	Read Aloud	Read Aloud	Read Aloud	Read Aloud	Read Aloud
1:20-1:50	30	95% & Heggerty	95% & Heggerty	Music - Cycle	Library	Art - Cycle B
1:50-2:00	10	Science/SS	Science/SS	95% & Heggerty	95% & Heggerty	95% & Heggerty
2:00-2:30	30	RAM	RAM	RAM	RAM	RAM
2:30-3:10	40	Wonders	Wonders	Wonders	Wonders	Wonders
3:10-3:40	30	Math	Math	Math	Math	Math
3:40-3:45	10	Dismissal				

Schedule is a sample from the 2023-2024 school year:

# Kindergarten: PM

- Bus Transportation Home Only
- Arrival 12:55-1:05pm
- Front Door Drop Off (Auditorium doors)
- Instructional Day Begins 1:05pm
- Dismissal 3:45pm (car & bus riders)

# Kindergarten: PM

***Critical - Orange band must be on backpack all year for PM students only!***

- Helps driver recognize student is in Kindergarten and ***must*** be greeted by an adult at bus stop in the PM
- Keep this on backpack in a visible area
- Request new band if needed through Mrs. Hoffman in the main office



John Stoughton  
Director of Transportation  
[jstoughton@pinerichland.org](mailto:jstoughton@pinerichland.org)



# Kindergarten: PM

## ***Dismissal:***

- ***Inform your child's teacher how your child will typically get home - bus (pm only) or car rider***
- ***If there is a change on a particular day, please send a note in your child's folder AND email the teacher AND secretaries***
- ***This is only needed if it is a change in your child's regular transportation***



# **Delays, Cancellations, or Learning from Home**

**Kindergarten 2-Hour Delay Schedule:**

**AM session - 11:15-1:00**

**PM session - 2:05-3:45**

**Information:**

**PR-TV**


**[www.pinerichland.org](http://www.pinerichland.org)**

**Local TV**

**Pine-Richland Twitter or Facebook**

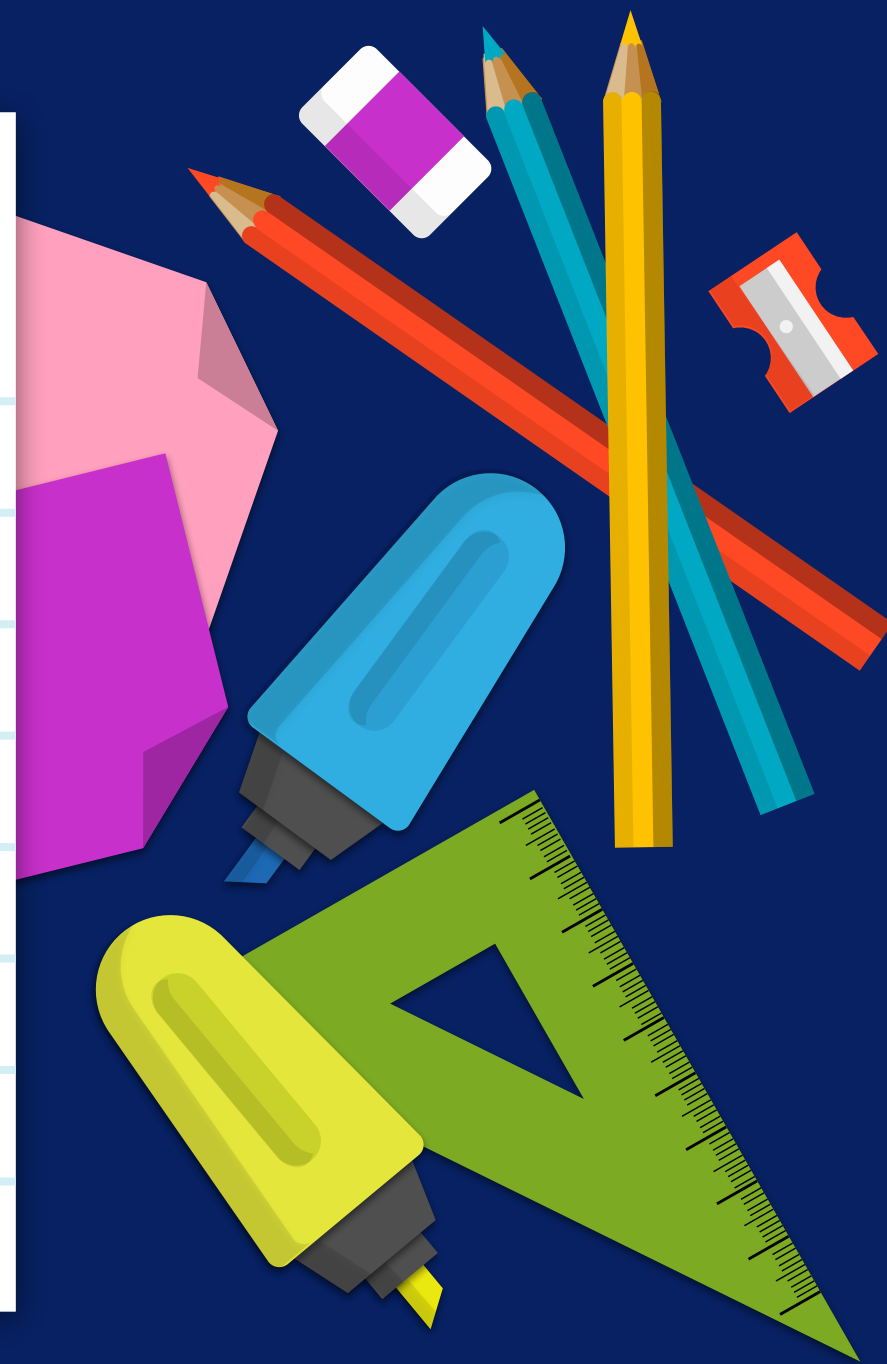


**Erin Hasinger**  
**Director of Communications**  
**[ehasinger@pinerichland.org](mailto:ehasinger@pinerichland.org)**

A yellow pencil with a pink eraser and a sharp lead tip, positioned vertically on the left side of the notebook.

# Curriculum and Resources Read the K-3 Curriculum HERE

Kindergarten





# Literacy:

**Phonemic Awareness: Phonemic awareness is the ability to understand that spoken words are made up of individual sounds called phonemes, and it's one of the best early predictors for reading success. (Heggerty - click HERE)**

Kindergarten



# Literacy:

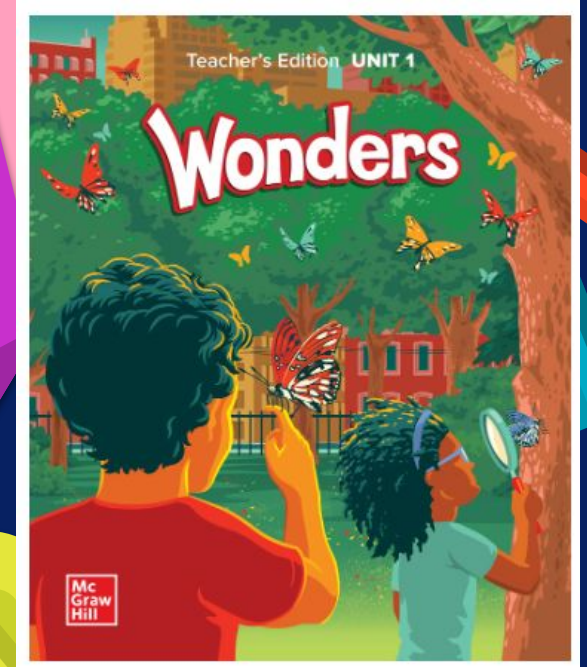
## Phonics:

- The relationship between the letters (graphemes) of written language and the individual sounds (phonemes) of spoken language. This is called the alphabetic principle.
- Using the letter-sound pairings to sound out printed words.
- The understanding that there are systematic and predictable relationships between written letters and spoken sounds.
- Click **HERE** to read more about our resource, **95% Group**



# Literacy:

- The English Language Arts program encompasses the areas of reading, writing, language, spelling, and speaking. Students are involved in activities beginning in Kindergarten that are designed to help them explore their interests, share their experiences, and develop a lifelong love of reading.



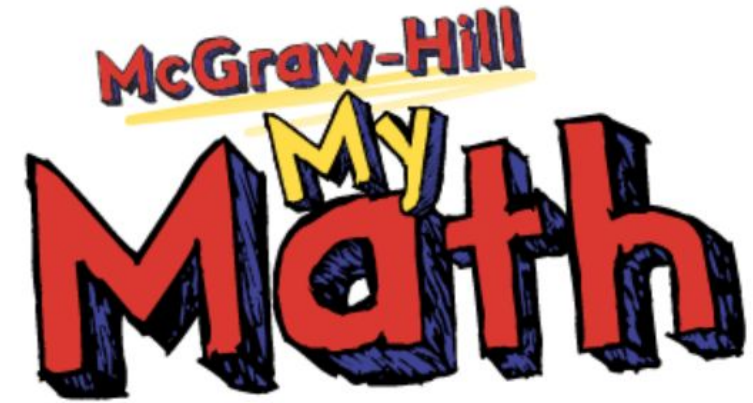


# Math:

## Made for Student Success


Built around the Standards for Mathematical Practices, McGraw-Hill My Math engages students with the focus, coherence and rigor required by state standards. The program has an intuitive lesson format and digital tools to develop customized content. Digital accessibility with any device help you to plan, sequence, and deliver instruction that works best for your students anytime, anywhere.

Kindergarten



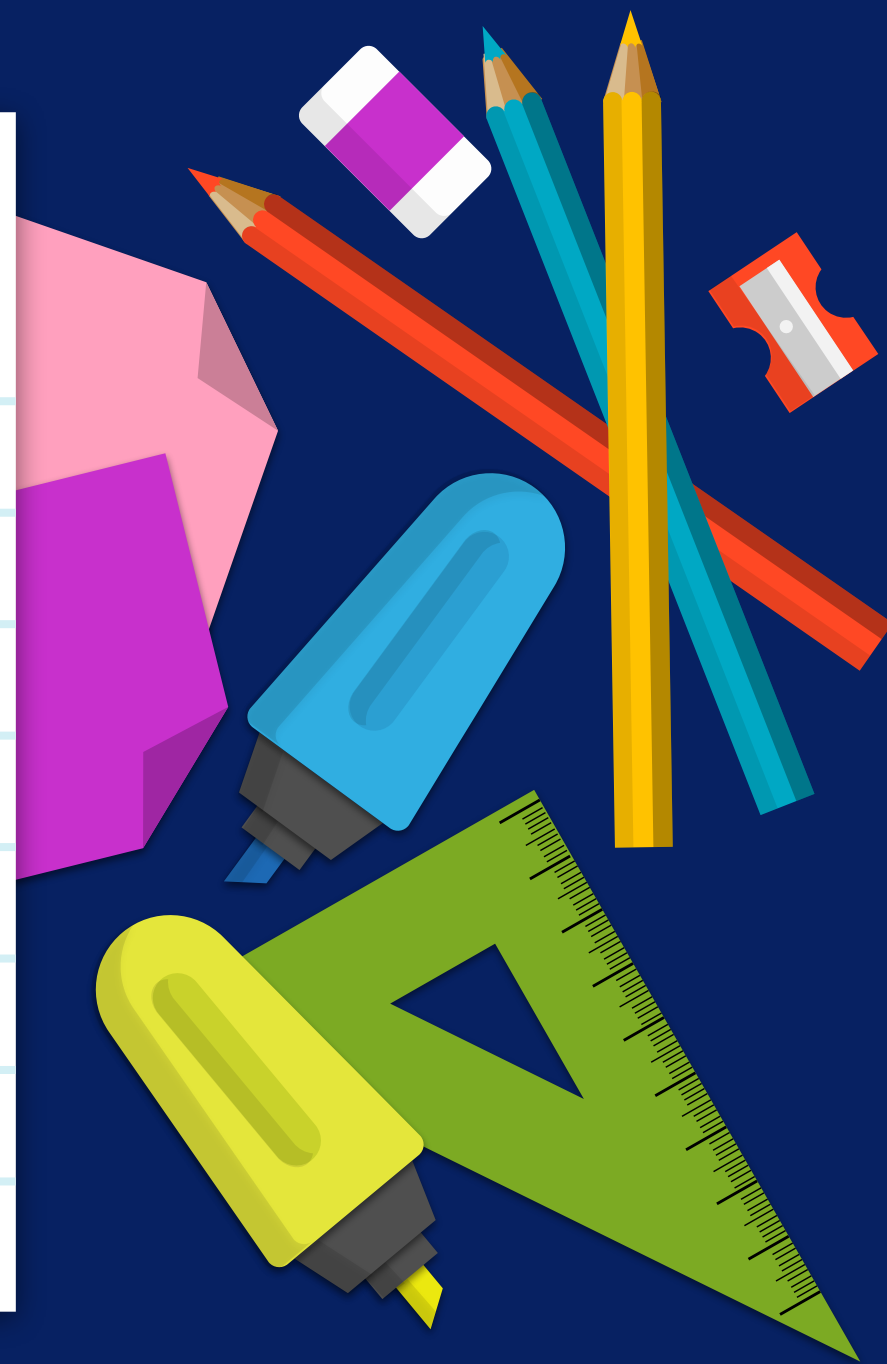
## Units of Study:

- Unit 1: Counting and Cardinality
- Unit 2: Operations and Algebraic Thinking
- Unit 3: Numbers and Operations in Base 10
- Unit 4: Geometry
- Unit 5: Measurement and Data
- Unit 6: Calendar Math



**Special Area Classes:**  
**Library – 30 minutes/5**  
**day cycle**  
**Art or Music– 30**  
**minutes/5 day cycle**

Kindergarten





# **RAM Time:**

**“Reading and Math”**

**Common intervention and  
enrichment time**

**20-30 minutes for AM and PM K**

**No core instruction missed**

**Supplemental to core  
instruction from curriculum**

*Kindergarten*



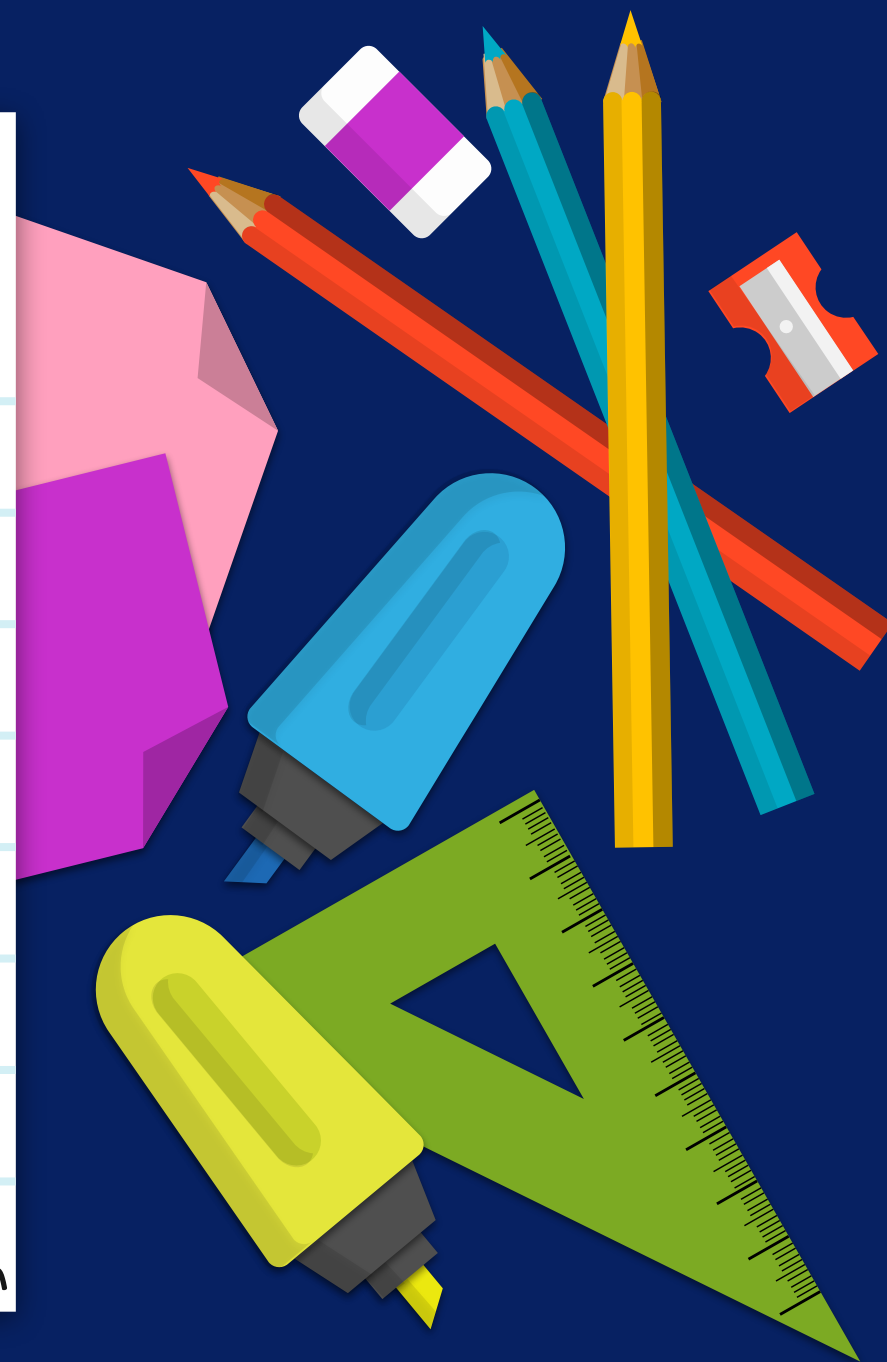





# Assessments:

- **Informal and Formal Assessments**
  - Throughout the year
  - Progress Reports quarterly
- **STAR 360 Early Literacy**
  - Letter Identification
  - Letters as Sound Symbols
  - Initial Medial & Ending Sounds
  - Phonemic Awareness
  - Alphabetic Principle

Kindergarten





# **RAMS Way**

## **Building a positive school culture with consistent expectations for all!**

Kindergarten



# Behavioral Matrix

Click [HERE](#) to read  
more about PBIS:

Lessons to learn

Assemblies to celebrate

School store to spend  
tickets

Shoutouts to acknowledge

**Pine-Richland School District**  
Focused on Learning for Every Student Every Day

## The RAMS Way

**R**ESPECTFUL

**A**CCOUNTABLE

**M**OTIVATED

**S**AFE

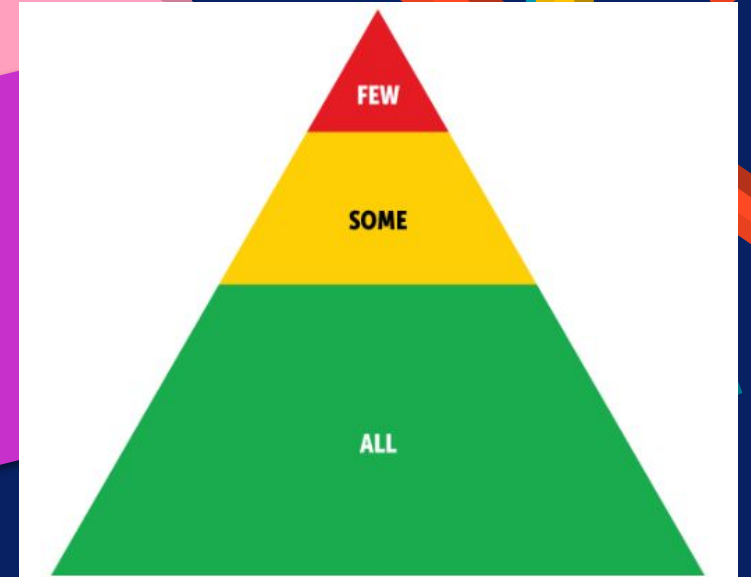
Kindergarten



# MTSS - Multi-tiered System of Supports:

systematic, collaborative team  
approach to ensuring all students  
are accessing learning and  
growth opportunities

Kindergarten



4

Light Refreshments  
with the PTO... but  
first some important  
info!

# Countdown to Kindergarten

## *School Preparations:*

- KinderCamp - great job, step 1 is almost over!
- A.M/P.M Placement Notification (late June)
- Student Placement (Mid August Notification)
- Find Your Classroom Day - August 13th 9-3pm - visit the building and find the students' classroom together!
- RE - Kindergarten Parent Meet the Teacher Night - August 18, 2025

First Day of School August 20, 2025



## How to help with the transition:

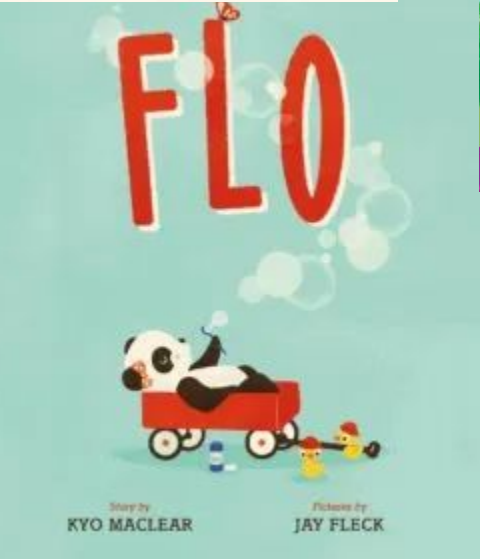
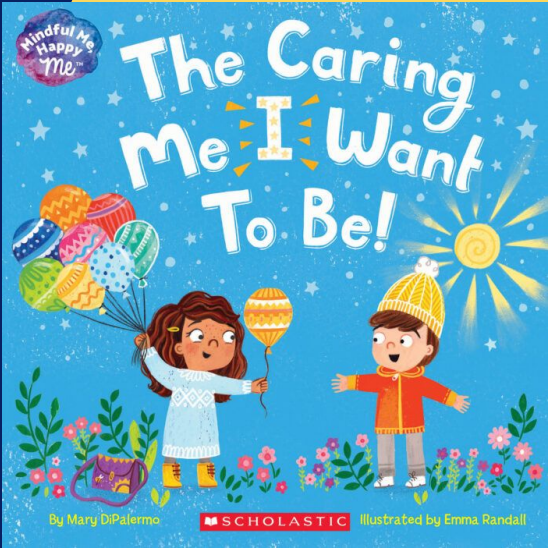
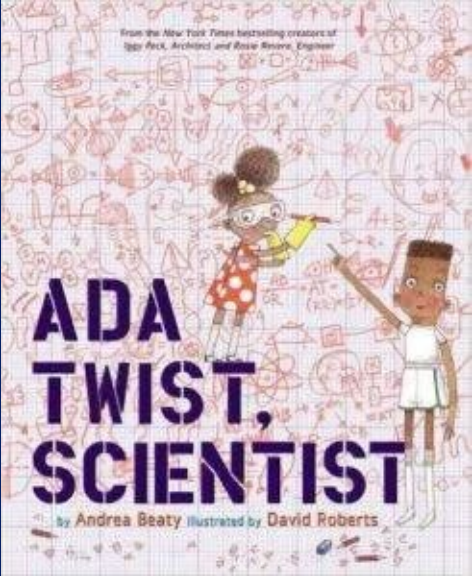
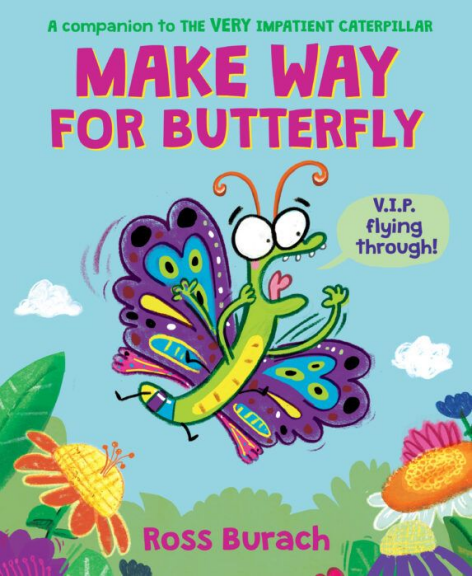
- *Communication/Connect with school*
- *Website, Friday Flash*
- *Support feelings*
- *Realistic Expectations*
- *Make connections with peers - summer playdates at RES Playground!*
- *Routines (Get lots of sleep!)*
- *Memory Box, New Traditions, Map of Neighborhood, Safety Plan*

## What if my child is nervous?

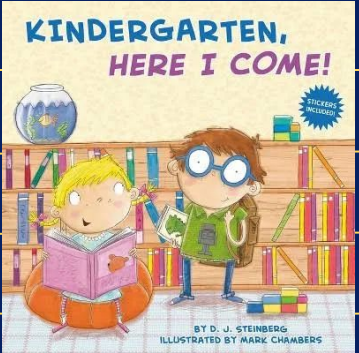
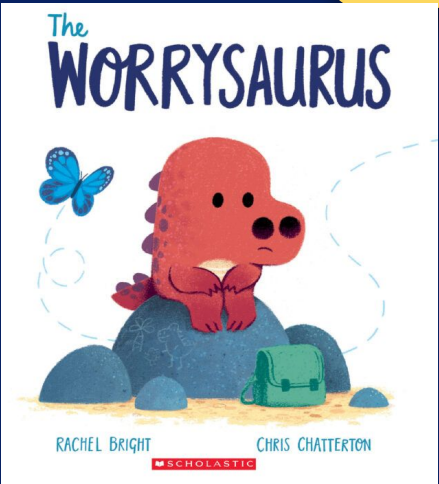
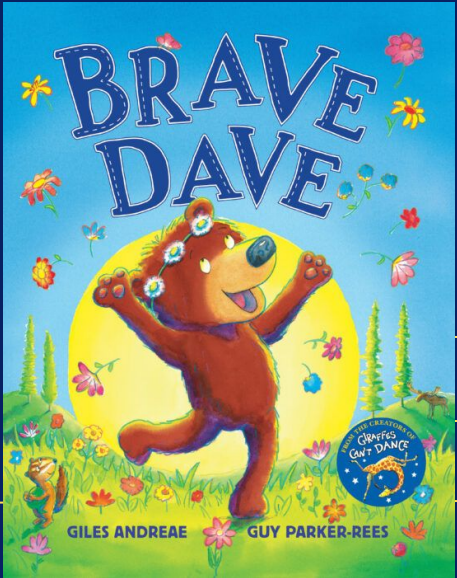
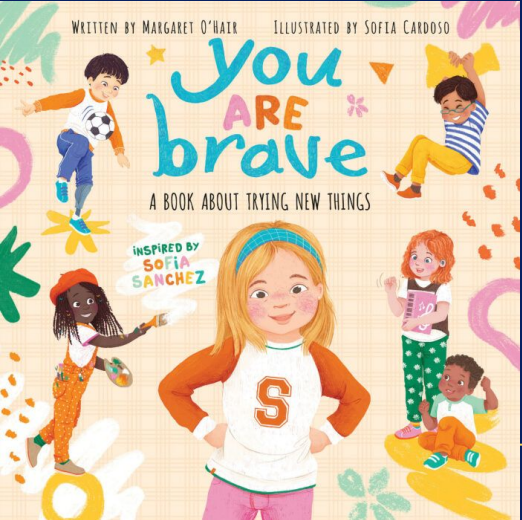
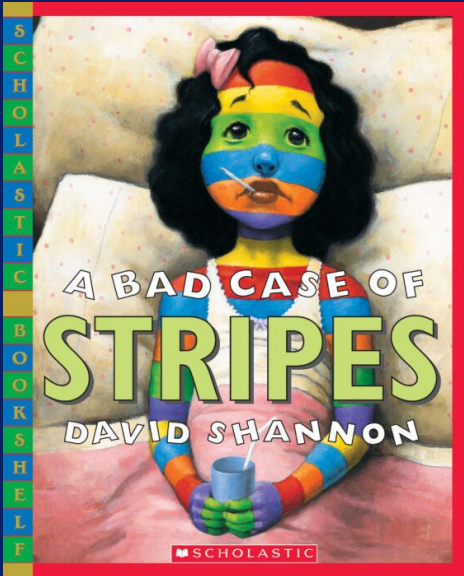
- *Talking with your child is the best way to combat nervousness before the first day of school!*
- *Make sure your child knows that it's totally normal to feel nervous*
- *Encourage your child to be open and honest about his/her feelings about coming to school*
- *Reassure your child that school is new for their classmates too*
- *There will be a lot of new people and new things, so there will be a lot of learning happening for everyone*
- *Read books over the summer about school and kindergarten*
- *If there is any way that we can support your child, please call or email the school office. We are here for you!*



Focused on Learning for Every Student Every Day.



# Great Summer Reads!





## Things to do over the summer:

### Practice:

- Identifying letters and their sounds
- Identifying numbers and corresponding them with amounts (counting items)
- Cutting with scissors
- Name writing and any handwriting
- Read each night to establish a routine and love for literacy!

# Keep Learning:

## Additional Resources:

PRSD Strategic Plan 2023-2027  
Stepping Stones - Key partner that provides programming before and after school as well as the half day opposite your child's kindergarten half day. We are separate entities, but they do operate in our building for convenience to families. Registration for PRSD opens soon and is first come first served.

**PARENT RESOURCES**  
**HERE**

**Sign Up for**  
**Communications**  
**HERE**  
**Community Web Portal** -  
**for access to grades and**  
**records in Sapphire**

## Policies and Regulations:

Academic Calendar - 25-26

Attendance - 10 parent excused days per school year, includes educational trips (approved vacations) and sick days without a medical note

Delays and Closings

Discipline Code

Food Service - expect updates summer 2025

Student Handbooks

Volunteers

RAMS Way

## STEPPING STONES CHILDREN'S CENTER

### Offering Before School Kindergarten & After School Programming

#### QUESTIONS:

Email: [registration@stepstonescc.org](mailto:registration@stepstonescc.org)

Call: (724)625-2199 x235



#### Kindergarten

Our program offers a unique curriculum that supplements the district curriculum with lessons based on the early learning standards. We engage children in play-based learning in reading, writing, math, science, social studies, STEM, creative arts, gross motor, and much more!

#### Before & After School

The before and after school programs provide safe and engaging childcare for working parents. Our programs offer hands on activities based on the early learning standards. Students are exposed to STEM, creative arts, gross motor, problem solving, and creative play. Students in the after school program will also receive a daily snack and time to complete homework with adult assistance, if needed.

#### Registration Details

What you will need for  
Registration

- Completed registration form
- Health Assessment
- Payment Information

#### Hours & Locations

All of our programs are located directly in each of the three elementary schools within the Pine-Richland School District. Our hours of operation are 7:00am-6:00pm.

Before School: 7:00am-9:00am

AM Kindergarten: 9:00am-1:00pm

PM Kindergarten: 11:50am-3:30pm

After School: 3:45pm-6:00pm

#### Enrollment

TWO OPTIONS:

1. "Full-Time": 2- 5 days per week. A two day weekly minimum is required for enrollment. Days are required to stay consistent through the month.

2. "As needed": Care is provided on a daily need; if space is available. Prior notification and approval is needed before attending.

CHECK OUT OUR  
WEBSITE FOR MORE  
INFORMATION  
[WWW.STEPSTONESCC.ORG](http://WWW.STEPSTONESCC.ORG)



StepstonesCC1979



stepstones1979

Click HERE for Registration  
Information!

They understand that some  
adjustments may need to be made  
regarding AM/PM placements.





# Thank you!

Jenna L. Rucker

[jerucker@pinerichland.org](mailto:jerucker@pinerichland.org)

Virginia (Gina) Hoffman

[vhoffman@pinerichland.org](mailto:vhoffman@pinerichland.org)

# Credits.

Presentation Template: Slidesmania

Images: Unsplash

Fonts used in this presentation: Gochi Hand and  
Baloo 2



**Free** themes and templates for  
**Google Slides** or **PowerPoint**

**NOT to be sold as is or modified!**

Read [FAQ](#) on [slidesmania.com](https://slidesmania.com)

Do not remove the slidesmania.com text on the sides.

*Sharing is caring!*

---

