

DO YOU KNOW WHAT TO DO IF YOU ARE INJURED AT WORK?



- ✓ **Immediately** report incident to your Supervisor
- ✓ Call InterMed Nurse Triage (800) 367-5020
- ✓ Complete an Employee Industrial Injury Packet
- ✓ Go to the designated treating facility if you wish to seek treatment



Kaiser on the Job

9353 E. Imperial Highway (3rd Floor)
Downey, Ca 90242
562- 657-2200

Hours: 8:30am- 5:00pm

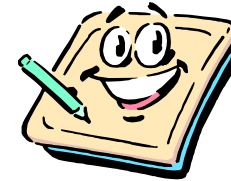
After Hours: 24 hours/7 days

Downey Medical Center
9333 E. Imperial Hwy
Downey, Ca 90242

Concentra

2499 S. Wilmington Ave.
Compton, Ca 9022
310-638-1113

**Hours: Monday-Friday
7:00am -6:00pm**



- ✓ **Follow-up with Risk Management with work status report**

Reporting an injury immediately to your Supervisor helps to prevent delays in treatment / benefits and increases likelihood of an early return to work.