

# Design Update - 06.10.2025



# AGENDA

**Process Review**

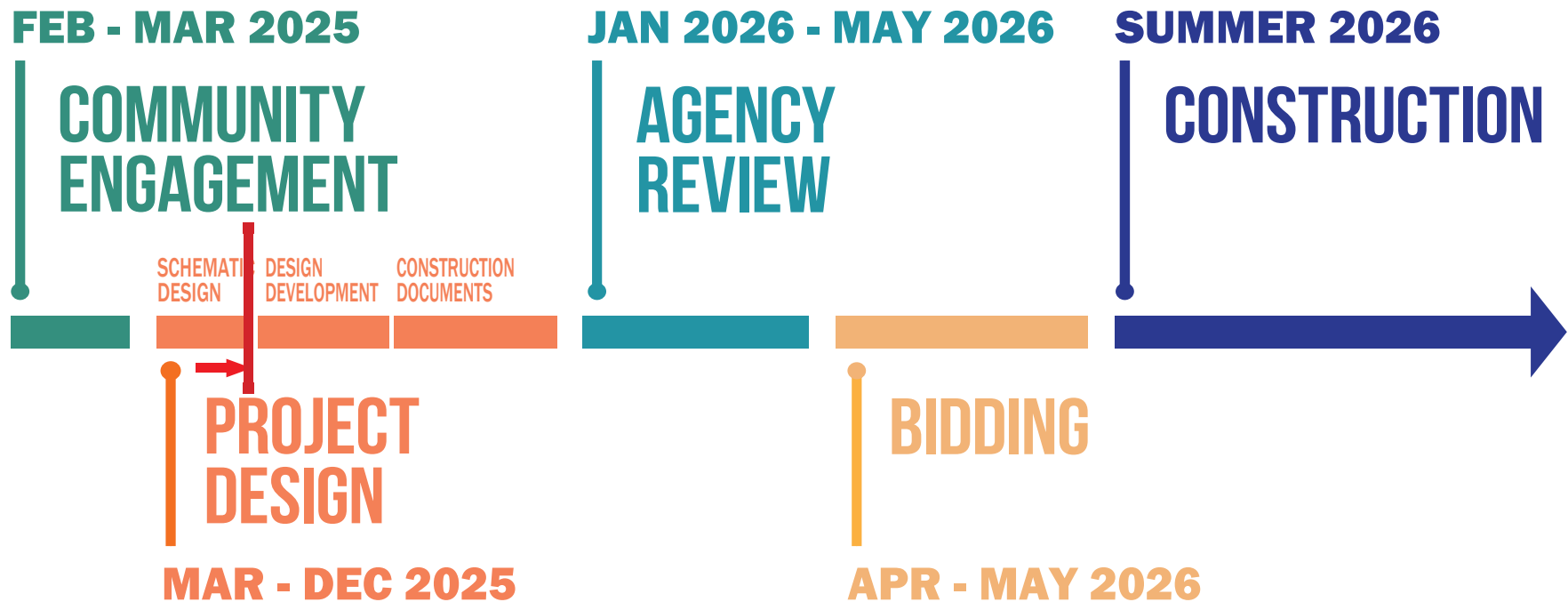
**School Concept**

**Site Planning**

**Architectural Concept**

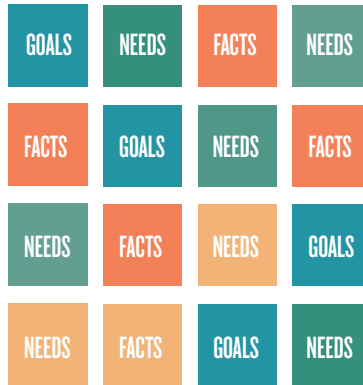
**Next Steps**

# PROJECT TIMELINE

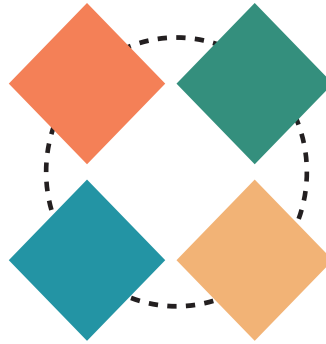


# SYMPOSIUM

STRUCTURED PROCESS FOR COMMUNITY ENGAGEMENT



Goals, Facts, & Needs



Concepts



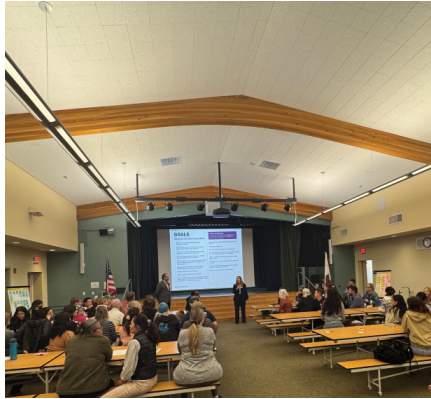
Solutions





# GOALS

SESSION 1 RECAP, February 26th, 5:30pm, Paul Ecke CES



# GOALS

SESSION 1 RECAP, February 26th, 5:30pm, Paul Ecke CES

UPDATED & COLLABORATIVE SPACES	IMPROVED OUTDOOR LEARNING SPACES	DIGITAL CONNECTIVITY	FLEXIBLE LEARNING - INSIDE AND OUT	FLEXIBLE & USABLE MPR AND LIBRARY	KEEP LEUCADIA FUNKY	DEDICATED SPACES FOR COMMUNITY
PRESERVE MOSAICS, BELL TOWER, TRADITION	SECURE/ SEPARATE KINDER AREA	SINGLE POINT OF ENTRY	PERIMETER INGRESS/ EGRESS	SAFE PATHWAYS TO SCHOOL	WAYFINDING	PRIVACY FROM STREETS
SAFE DROP-OFF & PICK-UP	PARKING EFFICIENCY & TRAFFIC FLOW	NATURAL LIGHT	CLIMATE CHANGE + FLOOD MITIGATION	INTEGRATED GARDEN PROGRAM	RELATIONSHIP TO NATURAL WORLD	NO PORTABLE CLASSROOMS
PLAYFIELDS WITHOUT BARE SPOTS	IMPROVED FOOD SERVICES	PROMOTE LEARNING ACROSS ALL SPACES	QUIET SPACES	SUPPORT FOR STUDENTS WITH SENSORY CHALLENGES	DESIGN FOR ALL WEATHER	INCLUSIVE SPACES (INDOORS AND OUTDOORS)



# FACTS

**GRADES:  
K-6TH**

**AVERAGE  
STUDENT  
TEACHER  
RATIO:  
22:1 (K)**

**CURRENT  
ENROLLMENT  
583**

**CLASSES PER  
GRADE:  
4**

**TEACHING  
STATIONS:  
28 (3  
PORTABLES)**

**DUAL LANGUAGE  
IMMERSION  
PROGRAM**

**PROJECT  
BUDGET:  
\$60M**

**DEMOGRAPHICS:  
58.5% WHITE  
28.6% LATINO /  
HISPANIC  
12.9% OTHER**

**12.8% ENGLISH  
LANGUAGE  
LEARNER  
10.4% SPED**

**SITE AREA:  
7.2 ACRES**

**CURRENT  
BLDG AREA:  
61,300 SF  
(INCLUDING  
PORTABLES)**

**CAMPUS  
BUILT: 1927  
98 YEARS OLD**

**AVAILABLE  
PARKING  
SPOTS:  
39 (3 ADA)**

**INEFFICIENT  
PICKUP /  
DROPOFF**

**SHARED USE:  
LEUCADIA  
FARMERS  
MARKET IN THE  
FIELDS**





# NEEDS

## SESSION 2 RECAP, March 12, 5:30pm, Paul Ecke CES



# NEEDS

SESSION 2 RECAP, March 12, 5:30pm, Paul Ecke CES

## COMMUNITY IDENTIFIED NEEDS

### COMMUNITY & ACCESS:

Safe circulation for pedestrians, bikes, and vehicles; flexible/adaptable spaces; defined areas for school and farmers market

### COLLABORATION & LEARNING:

Teacher workspaces, tech-integrated classrooms, STEAM rooms, and flexible seating.

### WELLNESS & ENVIRONMENT:

Non-toxic materials, shaded pathways, weather mitigation, and nature-inspired play areas.

### COMMUNITY INTEGRATION:

Maintain garden access, support farmers market needs, and provide multi-use community areas.

### FACILITIES & FUNCTIONALITY:

Media center, gym, amphitheater, indoor/outdoor MPR, student-centered learning spaces, and classroom storage.

### OUTDOOR & GREEN SPACES:

Gardens, outdoor classrooms, running track, creative playgrounds, and event spaces.

### SAFETY & SECURITY:

Controlled access, perimeter fencing, secure drop-off/pick-up, and passive supervision.

### TRAFFIC & PARKING:

Adequate staff/visitor parking, efficient drop-off zones, and bike parking

### SUSTAINABILITY & EFFICIENCY:

Solar panels, energy-efficient design, electric car charging, and well-drained campus.

### DESIGN & AESTHETIC:

Progressive, funky, and community-reflective design with natural light, transparency, and inviting spaces.



# CONCEPTS & SOLUTIONS

SESSION 3 RECAP, March 20, 5:30pm, Paul Ecke CES

# CONCEPTS & SOLUTIONS

SESSION 3 RECAP, March 20, 5:30pm, Paul Ecke CES





# SOLUTIONS: SITE PLANNING WORKSHOP





# COMMON THREADS

Parking/drop off on along Vulcan Ave.

Kinder @ East Side of Site

Contiguous Academic Zone

Civic Plaza in Northwest Corner

Fields/play on Southern Side

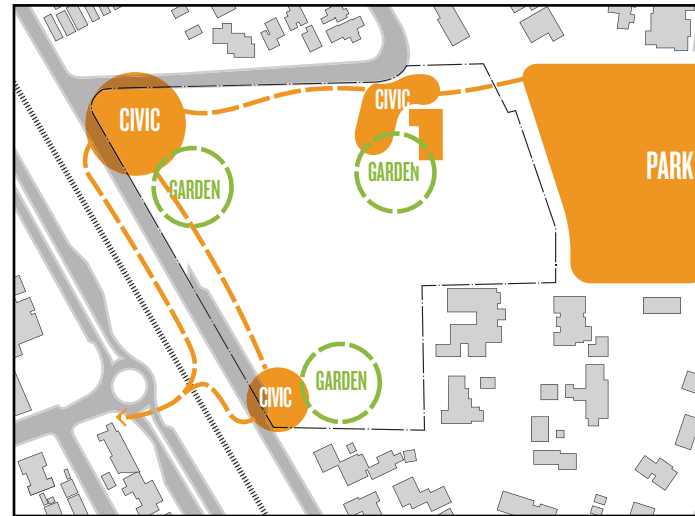
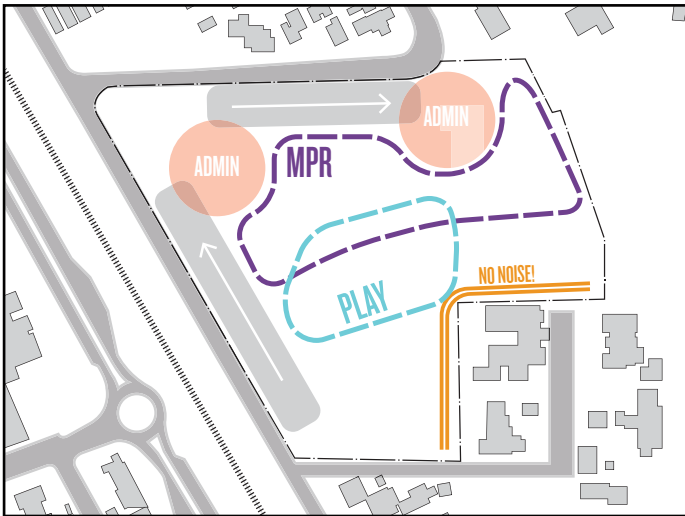
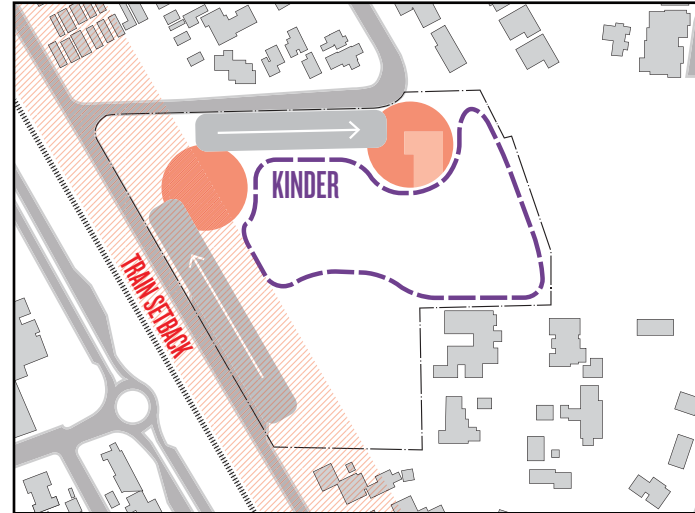
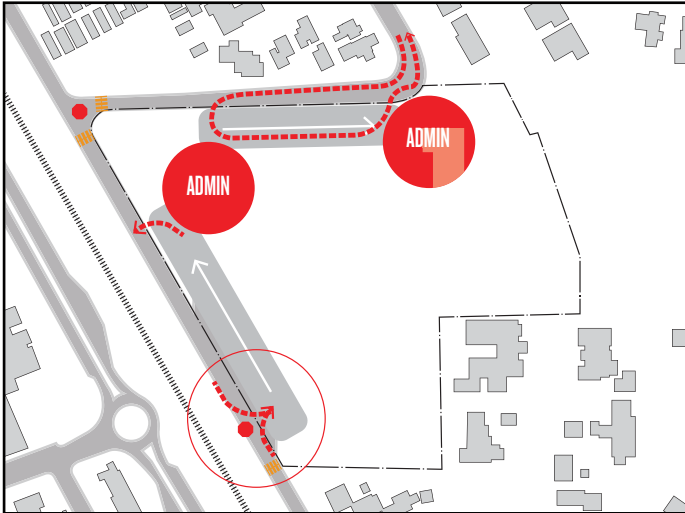
Gardens located throughout

Farmers Market use focused on hardcourts & parking areas



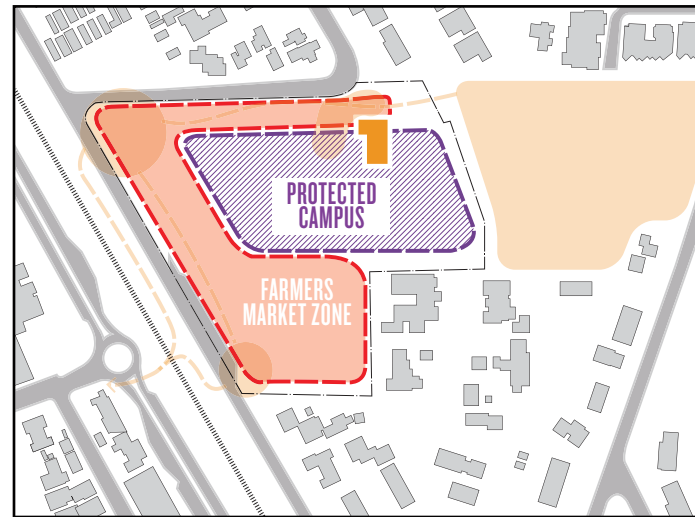
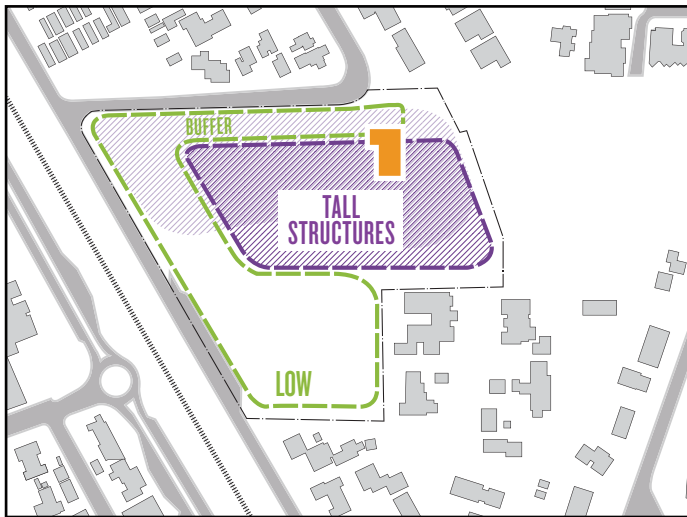
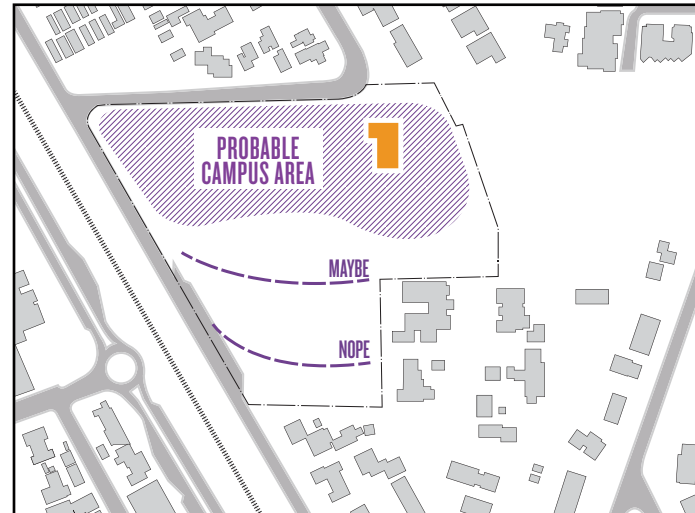
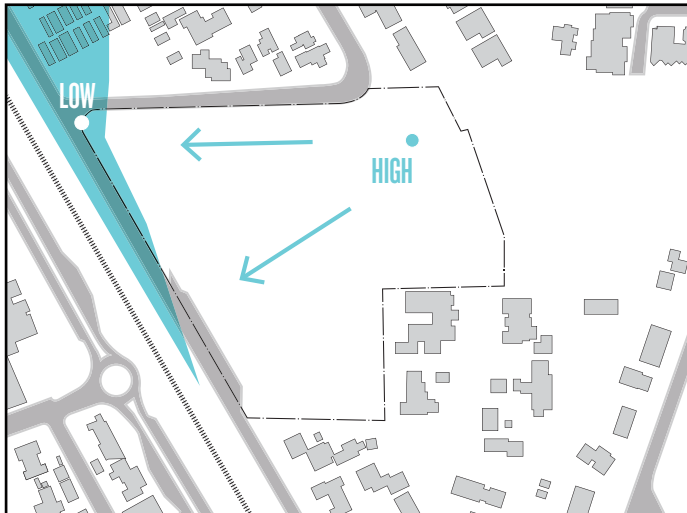
# SITE CONSTRAINTS

Site Access: Union, Vulcan, or Both?





# SITE CONSTRAINTS

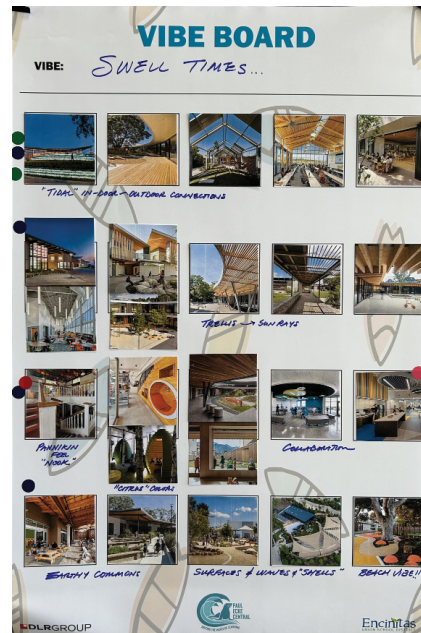


# CONCEPTS WORKSHOP





# CONCEPTS WORKSHOP





# CONCEPTS WORKSHOP





# School in a Garden

## **Rooted in Leucadia.**

Natural, informal, layered and textured spaces

## **Indoor-outdoor learning.**

Classrooms that open to gardens

## **Student-centered & inclusive.**

Space to move, explore, belong

## **Community-inspired.**

Eclectic, local, creative, collective, heritage-honoring

## **Wellness & growth-focused.**

Daylight, nature, social-emotional support

## **Aligned with EUSD Strategic Plan.**

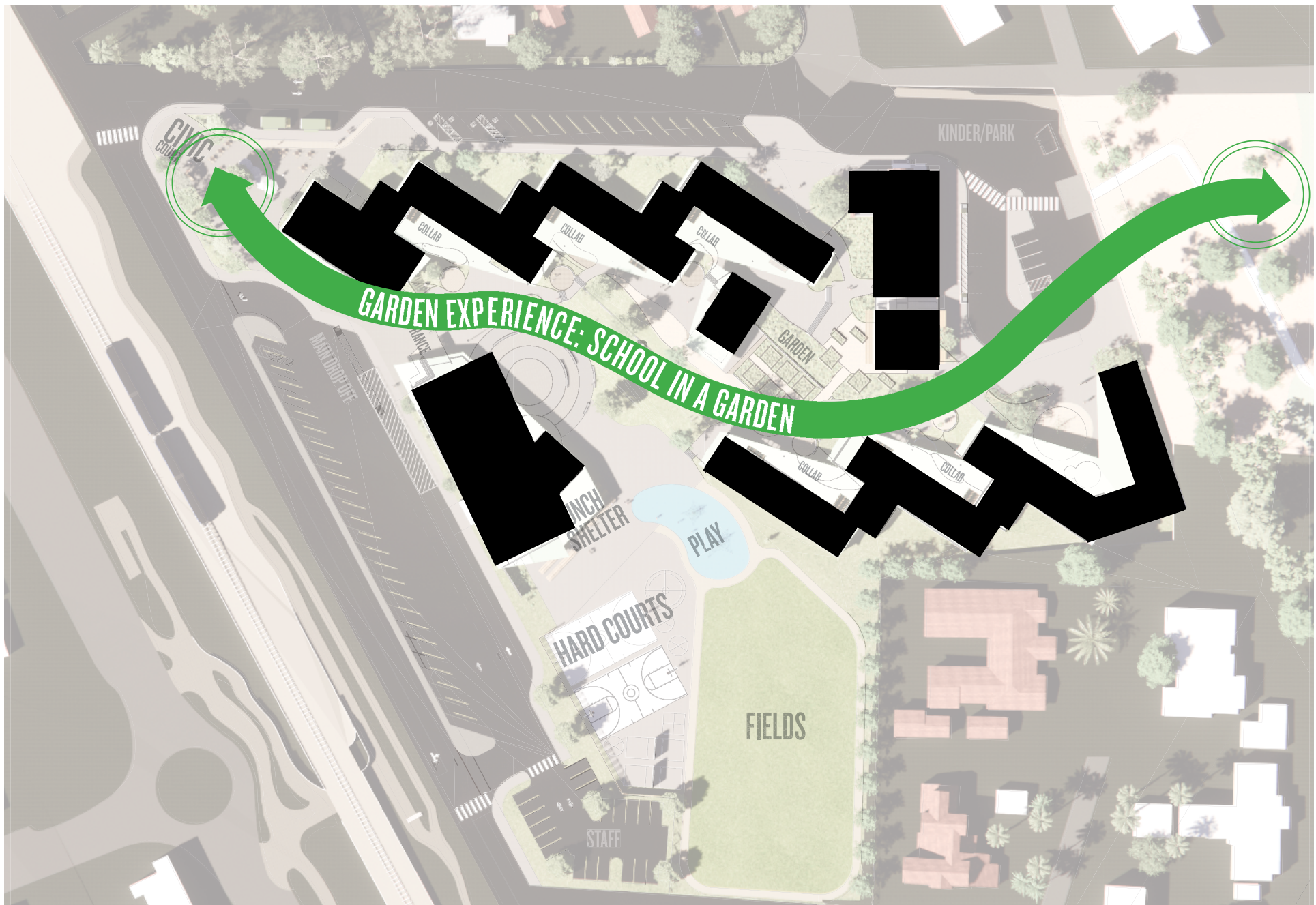
Joyful, real-world, connected learning

**KEEP  
LEUCADIA  
FUNKY**







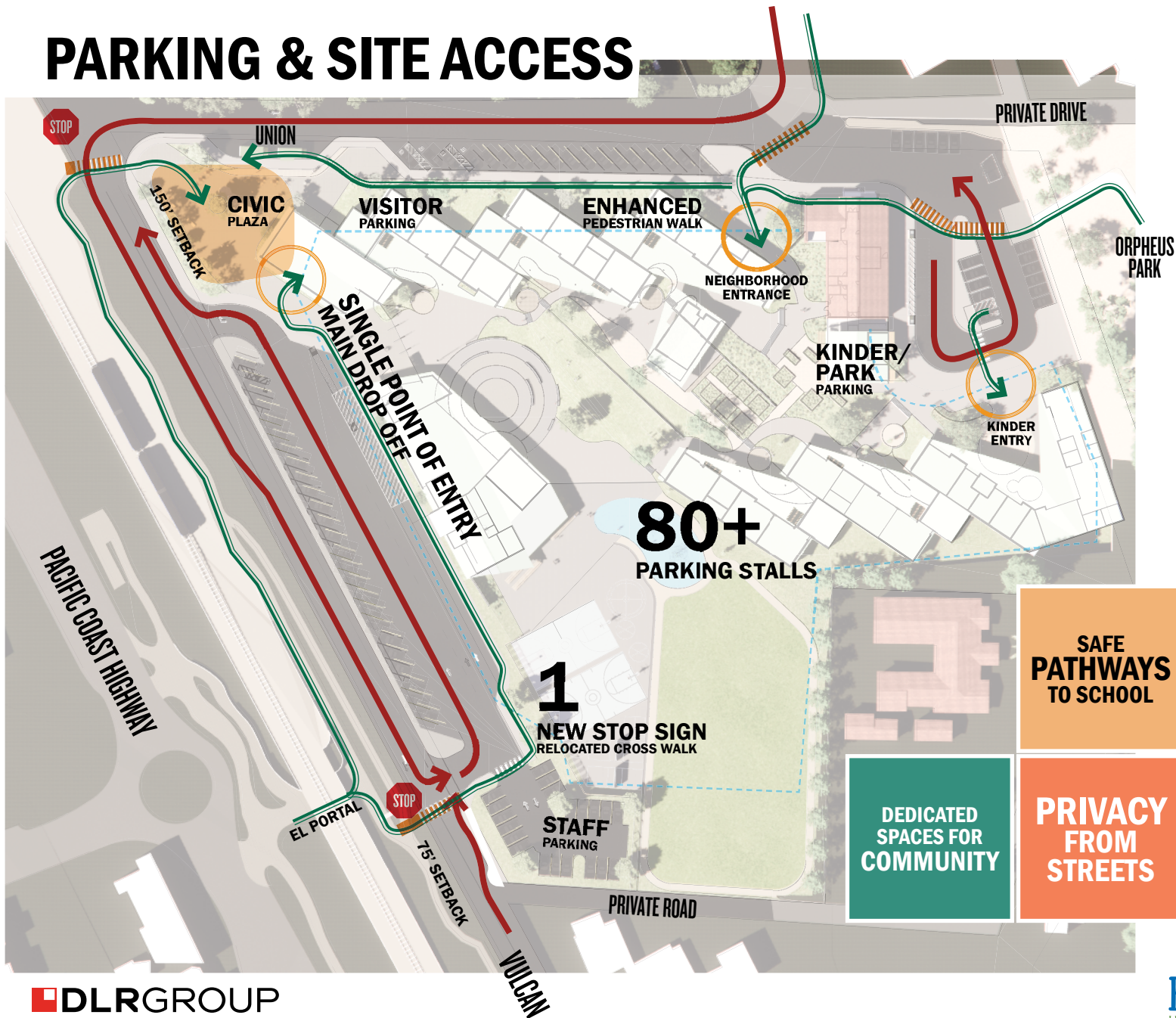








# PARKING & SITE ACCESS



**SAFE  
DROP-  
OFF &  
PICK-UP**

**SECURE/  
SEPARATE  
KINDER AREA**

**PARKING  
EFFICIENCY  
& TRAFFIC  
FLOW**

**SAFE  
PATHWAYS  
TO SCHOOL**

**SINGLE  
POINT OF  
ENTRY**

**DEDICATED  
SPACES FOR  
COMMUNITY**

**PRIVACY  
FROM  
STREETS**

**PERIMETER  
INGRESS/  
EGRESS**



# NATURAL LANDSCAPES



**INTEGRATED  
GARDEN  
PROGRAM**

**FLEXIBLE  
LEARNING**  
- INSIDE AND  
OUT

**CLIMATE  
CHANGE**  
+ FLOOD  
MITIGATION

**IMPROVED  
OUTDOOR  
LEARNING  
SPACES**

**QUIET  
SPACES**

**RELATIONSHIP  
TO  
NATURAL  
WORLD**

**PROMOTE  
LEARNING  
ACROSS ALL  
SPACES**

**INCLUSIVE  
SPACES**  
(INDOORS AND  
OUTDOORS)

**PLAYFIELDS  
WITHOUT BARE  
SPOTS**



# GARDENS



**SUNDIAL  
GARDEN**



**VERMICULTURE  
GARDEN**



**ADVENTURE  
PLAY**



**FARMERS  
MARKET**



**THE BARN**



**INSTRUCTIONAL  
GARDEN**



**GREENHOUSE**



**CAMPUS  
GATHERING**



**EARLY  
CALIFORNIA  
GARDEN**



**WATER-WISE  
GARDEN**



**RAIN  
GARDEN**



**OUTDOOR  
LEARNING**



**QUIET  
GARDEN**



**POLLINATOR  
GARDEN**









IMPROVED  
OUTDOOR  
LEARNING  
SPACES

DEDICATED  
SPACES FOR  
COMMUNITY

INTEGRATED  
GARDEN  
PROGRAM

RELATIONSHIP  
TO  
NATURAL  
WORLD





**IMPROVED  
OUTDOOR  
LEARNING  
SPACES**

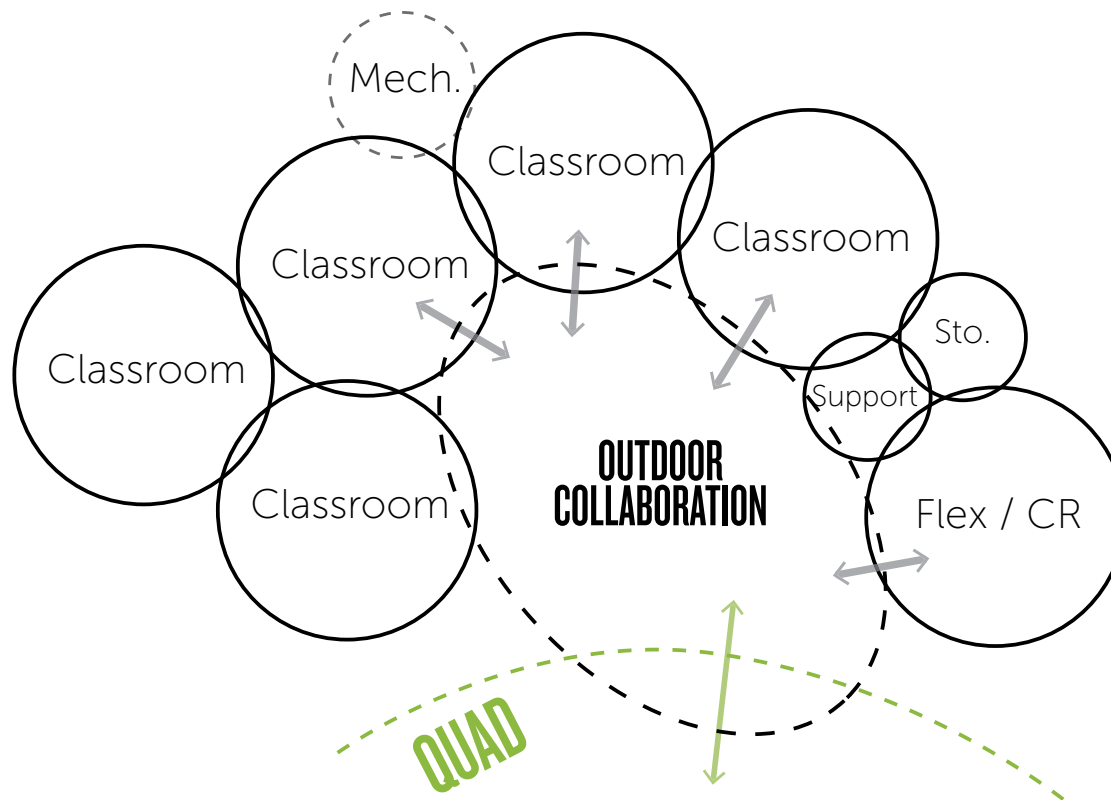
**DEDICATED  
SPACES FOR  
COMMUNITY**

**INTEGRATED  
GARDEN  
PROGRAM**

**RELATIONSHIP  
TO  
NATURAL  
WORLD**



# LEARNING VILLAGES



# OUTDOOR COLLABORATION



**FLEXIBLE  
LEARNING**  
- INSIDE AND  
OUT

**RELATIONSHIP  
TO  
NATURAL  
WORLD**

**INCLUSIVE  
SPACES**  
(INDOORS AND  
OUTDOORS)

**PROMOTE  
LEARNING  
ACROSS ALL  
SPACES**



**IMPROVED  
OUTDOOR  
LEARNING  
SPACES**

**UPDATED &  
COLLABORATIVE  
SPACES**







# FARMERS MARKET





# WHAT'S NEXT

- *Collect Feedback on Preliminary Concept*
- *Post the Symposium Book recording the process*
- *Move forward with Design Development and Construction Documents*

