



-Pathway to Position-

SBCUSD Students during a Work-Based Learning Tour of the San Bernardino International Airport (SBD)

Career Technical Education (CTE) COURSE GUIDE



SECONDARY
EDUCATION
COLLEGE & CAREER





TABLE OF CONTENTS

INTRODUCTION: Purposeful Pathways

- Importance of Career Technical Education (CTE)
- Today's CTE
- CTE Industry Sectors and Pathways
- Industry Exposure
- Earn College Credit Taking CTE Classes
- Meet A-G Requirements Take CTE Classes
- Purposeful Pathways: District Vision for an integration approach

COLLEGE & CAREER PATHWAYS

Arroyo Valley High School	San Andreas High School
Cajon High School	San Bernardino High School
Indian Springs High School	San Geronimo High School
Middle College High School	Sierra High School
Pacific High School	Virtual Academy High School

EXTENDED TRAINING / EDUCATION

- Post Secondary Degree/Certificate Opportunities

WORK BASED LEARNING

- Work based Learning- what is it?
- Work Based Learning Continuum - The Path
- Classroom to Apprenticeship via Pre-Apprenticeship

INDUSTRY PARTNERS

- Our connections to local industry partners are an essential piece of our CTE Pathways. Explore more in this section!

CTE PATHWAY FAQ's

INTRODUCTION

THE IMPORTANCE OF CAREER TECHNICAL EDUCATION (CTE)

The California economy is experiencing a skills gap:

- 47% of jobs in California require skills training- more education than high school but less than a four-year degree
- 39% of California workers are trained at this level*

"I learned to love math because I needed it to do well in my Construction Pathway."

-CHS CTE Student

Career Technical Education (CTE) courses provide students with real-world workforce skill development, career exploration and college preparation. CTE courses integrate rigorous academic instruction with technical and occupational content that helps to increase student achievement, graduation rates, as well as college and career readiness. CTE courses are sequenced to create pathways for students in a course of study which can lead to college and career opportunities.

"I would never have known about all the different jobs in and around the field of Manufacturing."

-ISHS CTE Student

In CTE students learn "soft skills" needed for the modern workplace such as: critical thinking, communication, teamwork, ethical leadership, research tools, creativity and innovation.

Experience is the best teacher. CTE can help all students get the experience needed to obtain the job of their choice, help upgrade skills, or help train them in a completely new field. Some classes even include the opportunity to complete training in a local business or organization.

CTE classes are conducted in classrooms equipped to industry standards and are taught by highly-qualified professionals from industry who are credentialed through the California Commission on Teacher Credentialing to teach in their area of expertise.

"Joining a Pathway helped me to get to know a lot of different people I would not have otherwise."

-SGHS CTE Student

CTE pathways begin in high school and are available to all students

* ACTE: California-CTE-Fact-Sheet-April 2023

CTE INDUSTRY SECTORS AND PATHWAYS

INDUSTRY SECTORS

- Arts, Media & Entertainment
- Building & Construction Trade
- Business and Finance
- Education, Child Development and Family Services
- Energy, Environment, and Utilities
- Engineering and Architecture
- Health Sciences and Medical Technologies
- Hospitality, Tourism, and Recreation
- Information & Communication Technologies
- Manufacturing and Product Development
- Marketing, Sales, and Services
- Public Services
- Transportation

INDUSTRY EXPOSURE

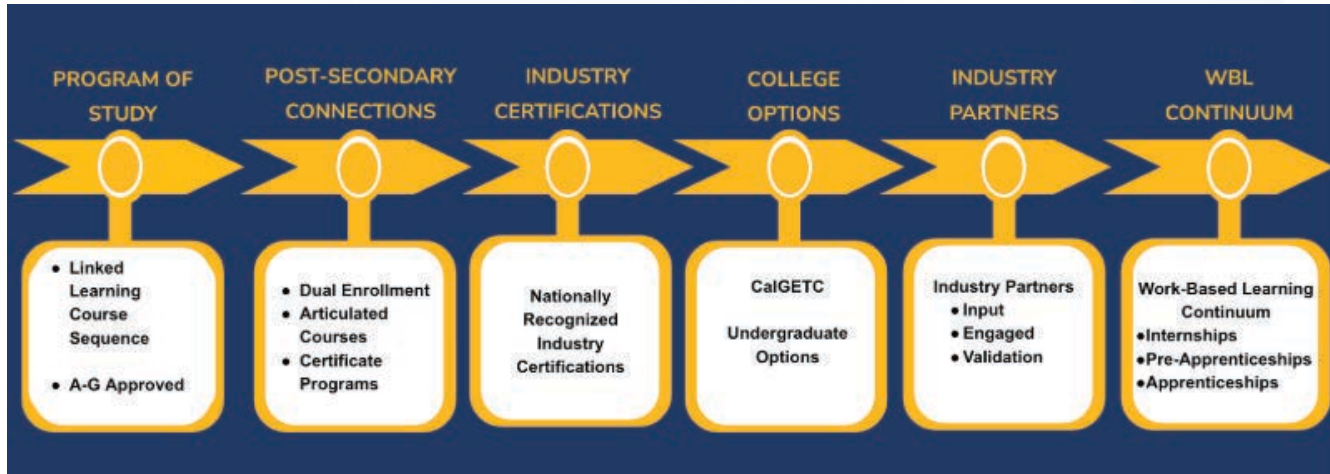
- Pre-Apprenticeships
- Internships
- Job Shadowing
- Volunteer / Community Service
- Micro-Internships
- Skills Simulations

CTE PATHWAYS

California's industry sectors are very broad and include hundreds of careers. Each CTE pathway focuses on a subset of careers within the sector and includes at least 2 years of courses. For example, SBCUSD offers Patient Care pathways that are a part of the larger Health Science & Medical Technology industry sector.

INTEGRATED APPROACH TO PURPOSEFUL PATHWAYS

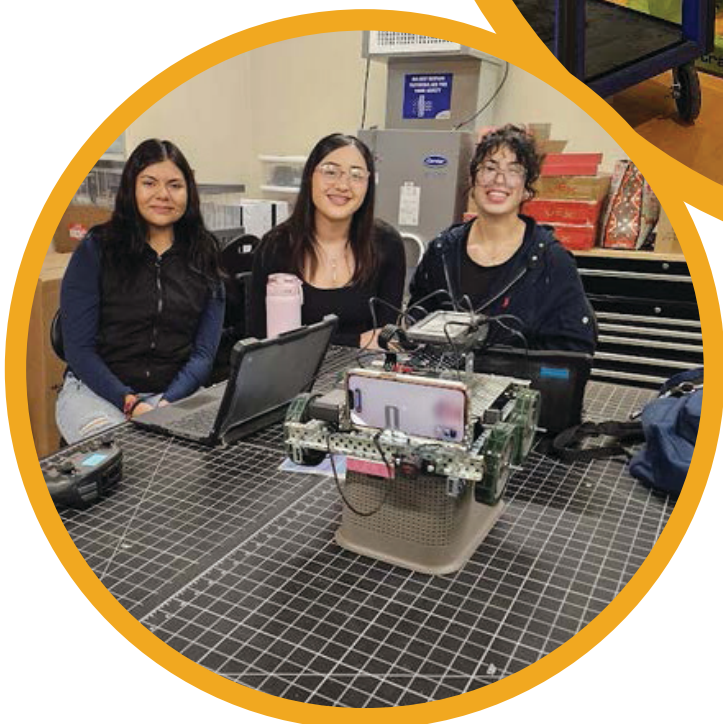
OUR VISION



BENEFITS OF BEING IN A CTE PATHWAY

1. **Rigorous Academics** - CTE Pathway students take connected CTE that fulfill part of the A-G requirements for admission to the University of California and California State University systems. All CTE courses are 100% A-G approved with embedded student supports.
2. **Post-Secondary Connections** - CTE Pathway courses allow for students to earn transferable early college credits through articulated and dual enrollment courses through our partner colleges and universities.
3. **Industry Certifications** - All CTE Pathways in SBCUSD provide students the opportunity to earn at least one industry-recognized certification through the application of their technical skills, strengthening resumes, and job readiness. Over 2,000 industry certifications were earned by our students last year, what can include: OSHA-10, American Heart Association CPR and First Aid, Food Handlers care and more.
4. **Industry Partners** - CTE Pathway students have access to internship and Pre- Apprenticeship opportunities along with the ability to connect with industry professionals in their classroom.
5. **Work-Based Learning** - All CTE Pathways include Industry based real-world projects that apply hands-on technical skills leading to higher earning potential upon high school graduation.

LEARN BY **DOING**





ARROYO VALLEY HIGH SCHOOL COLLEGE AND CAREER PATHWAYS

INDUSTRY SECTOR	CTE PATHWAY	CONCENTRATOR COURSE	CAPSTONE COURSE	EARLY COLLEGE CREDIT	INDUSTRY CERTIFICATION
Arts, Media & Entertainment	Design Media & Visual Arts	Contemporary Media Digitech 1	Digitech 2/Photo 1/ Film 1 Digitech 3/Photo 2/ Film 2	YES	YES
Business & Finance	Business Management	Business Communications Intro to Business	Banking & Financial Services Supply Chain Logistics	YES	YES
Education, Child Development & Family Services	Education	Child Development Teacher Training 1	Teacher Training 2 Teacher Training 3	YES	YES
Energy, Environment & Utilities	Energy and Power Technology	Technical Calculations Green Urban Design	Multi-Craft Core Curriculum Photovoltaics	YES	YES
Information Technology & Communication Technologies	Software & Systems Development	9th: Applied Technology 10th: Cyber Tech 1	11th grade: Cyber Tech 2 (AWS) 12th grade: Web Design and Development	In Progress	YES
Public Service	Legal Practices	AP Human Geography MYP Digitech 1	IB Writing & Research & APUSH Theory of Knowledge & APGOV/ECON	YES	In Progress



CAJON HIGH SCHOOL COLLEGE AND CAREER PATHWAYS

INDUSTRY SECTOR	CTE PATHWAY	CONCENTRATOR COURSE	CAPSTONE COURSE	EARLY COLLEGE CREDIT	INDUSTRY CERTIFICATION
Arts, Media & Entertainment	Design Media & Visual Arts	Contemporary Media Film Appreciation; Film/Video 1 Digitech1	Advanced Broadcasting and Digital Media Film; IB FilmHL1 & IB FilmHL2 Digitech 2 and Digitech 3	YES	YES
Arts, Media & Entertainment	Production & Managerial Arts	CTE Introduction to Theater	CTE Directing for Theater; CTE Technical Theater, Theater IBSL / Theater IBHL	In Progress	YES
Building Trades & Construction	Residential & Commercial Construction	Building & Construction Trades 1	Building & Construction Trades 2 Adv Building & Construction Trades 3	YES	YES
Business Management	Business & Finance	Intro to Business Computer Information Systems	Business Management and Entrepreneurship Global Business and Concepts	YES	YES
Education, Child Development, Human Services	Family & Human Services	Sociology CTE Honors Psychology	Senior Seminar in Human Services	YES	YES
Health Science & Medical Technology	Patient Care	Intro to Health Careers Medical Technology	Dental Health Patient Care Advanced Dental Health Patient Care	YES	YES
Information Technology & Communications	Networking	Applied Technology Cybersecurity	Computer Networking Adv Cybersecurity	YES	YES
Transportation	System Diagnostics, Service & Repair	Auto Tech 1	Auto Tech 2 Advanced Auto Tech 3	YES	YES



INDIAN SPRINGS HIGH SCHOOL COLLEGE AND CAREER PATHWAYS

INDUSTRY SECTOR	CTE PATHWAY	CONCENTRATOR COURSE	CAPSTONE COURSE	EARLY COLLEGE CREDIT	INDUSTRY CERTIFICATION
Arts, Media & Entertainment	Performance Arts	Introduction to Theatre Music Production	CTE Technical Theatre CTE Directing for Theatre Music Prod. & Recording Arts 2 Music Prod. & Recording Arts 3	In Progress	YES
Health Science & Medical Technology	Patient Care	Medical Technology	First Responder Introduction to CNA Sports Medicine Advanced Sports Medicine	YES	YES
Marketing Sales & Service	Marketing	Introduction to Marketing, Advertising, & Graphic Design	Media, Marketing & Publications Entrepreneurship	In Progress	YES
Manufacturing & Product Development	Machining & Forming Technologies	CTE Introduction to Machining	CTE Advanced Machining Advanced Machining 2	YES	YES



PACIFIC HIGH SCHOOL COLLEGE AND CAREER PATHWAYS

INDUSTRY SECTOR	CTE PATHWAY	CONCENTRATOR COURSE	CAPSTONE COURSE	EARLY COLLEGE CREDIT	INDUSTRY CERTIFICATION
Arts, Media & Entertainment	Design Media & Visual Arts	Art for Communications	Art for Production	YES	YES
Business & Finance	Business Management	Office Occupations	Microsoft Office Specialist	YES	YES
Health Science and Medical Technology	Biotechnology	PLTW Principals to Biomedical Honors PLTW Human Body System Honors	PLTW Medical Interventions PLTW Biomedical Innovation ADVANCED Honors	YES	YES
Hospitality, Tourism, and Recreation	Food Service & Hospitality	Food Sanitation and Safety	Baking and Service Management	In Progress	YES
Transportation	System Diagnostics, Service & Repair	Heavy Medium Duty Truck 1	Heavy Medium Duty Truck 2	YES	YES



MIDDLE COLLEGE HIGH SCHOOL COLLEGE AND CAREER PATHWAYS

INDUSTRY SECTOR	CTE PATHWAY	CONCENTRATOR COURSE	CAPSTONE COURSE	EARLY COLLEGE CREDIT	INDUSTRY CERTIFICATION
Arts, Media & Entertainment	Digital Media & Visual Arts	Adobe 1	Adobe 2	YES	YES

1260 West Esperanza Street | San Bernardino, CA 92410

middlecollege.sbcusd.com/cte



SAN ANDREAS HIGH SCHOOL COLLEGE AND CAREER PATHWAYS

INDUSTRY SECTOR	CTE PATHWAY	CONCENTRATOR COURSE	CAPSTONE COURSE	EARLY COLLEGE CREDIT	INDUSTRY CERTIFICATION
Health Science and Medical Technology	Patient Care	Medical Technology Medical English 2 Intro to Health Care & Careers	PE: Athletic Training CTE First Responder Health Careers Internships Certified Nurse Assistant	YES	YES
Business and Finance	Business Management	Intro to Business Business English 3 Mous World	Consumer Math Student Government Mous PowerPoint Agriculture Business Business Internship	YES	YES

3232 Pacific Street | Highland, CA 92346

sanandreas.sbcusd.com/cte



SAN BERNARDINO HIGH SCHOOL COLLEGE AND CAREER PATHWAYS

INDUSTRY SECTOR	CTE PATHWAY	CONCENTRATOR COURSE	CAPSTONE COURSE	EARLY COLLEGE CREDIT	INDUSTRY CERTIFICATION
Arts, Media & Entertainment	Design Media & Visual Arts	CTE Studio Art 1	CTE Studio Art 2 CTE Studio Art 3	In Progress	In Progress
Arts, Media & Entertainment	Performance Arts	CTE Digital Music Production (Intro) CTE Introduction to Vocal Music	CTE Intermediate Vocal Music CTE Advanced Vocal Music	In Progress	In Progress
Business and Finance	Business Management	Mous World	Mous Excel Mous PowerPoint	YES	YES
Engineering & Architecture	Engineering Design	PLTW Intro to Engineering	PLTW Principles of Engineering PLTW Digital Electronics	YES	YES
Manufacturing & Product Development	Graphic Production Technologies	Silk Screening 1	Silk Screening 2	In Progress	YES
Public Services	Public Safety	Intro to Public Safety Careers Public Safety 1	Public Safety 2 Public Safety 3	In Progress	YES



SAN GORGONIO HIGH SCHOOL COLLEGE AND CAREER PATHWAYS

INDUSTRY SECTOR	CTE PATHWAY	CONCENTRATOR COURSE	CAPSTONE COURSE	EARLY COLLEGE CREDIT	INDUSTRY CERTIFICATION
Arts, Media & Entertainment	Design Media & Visual Arts	Digitech1	Digitech 2	YES	YES
Building & Construction Trades	Production & Managerial Arts	Construction 1	Construction 2	YES	YES
Education, Child Development & Human Services	Child Development	Child Development	Childcare 1 Childcare 2	YES	YES
Education, Child Development & Human Services	Consumer Services	JAG-CA 1 (Jobs for America's Graduates of CA)	JAG-CA 2 (Jobs for America's Graduates of CA)	In Progress	YES
Engineering & Architecture	Engineering Design	PLTW Intro to Engineering	PLTW-Principles of Engineering Honors PLTW-Computer Integrated Manufacturing	YES	YES
Health Science & Medical Technology	Biotechnology	PLTW Principals to Biomedical Honors PLTW Human Body System Honors	PLTW Medical Intervention Honors PLTW Biomedical Innovation-Adv Honors	YES	YES
Hospitality, Tourism & Recreation	Food Service & Hospitality	Culinary Arts 1	Culinary Arts 2	In Progress	YES
Transportation	System Diagnostics, Service & Repair	Automotive Technology 1	Automotive Technology 2 Automotive Technology 3	YES	YES



SIERRA HIGH SCHOOL COLLEGE AND CAREER PATHWAYS

INDUSTRY SECTOR	CTE PATHWAY	CONCENTRATOR COURSE	CAPSTONE COURSE	EARLY COLLEGE CREDIT	INDUSTRY CERTIFICATION
Education. Child Development & Human Services	Family & Human Services	Psychology for Family & Human Services Eng 2: Building Executive Function The Heart of Family & Human Services	Eng 3: Lifeskills Through Literature Mental Health & Wellness Human Services Internship	YES	YES
Health Science and Medical Technology	Patient Care	Medical Terminology Intro to Health Careers	Medical Assistant Front Office Health Careers Internship	YES	YES

570 East 9th Street | San Bernardino, CA 92410

sierra.sbcusd.com/cte



VIRTUAL ACADEMY COLLEGE AND CAREER PATHWAYS

INDUSTRY SECTOR	CTE PATHWAY	CONCENTRATOR COURSE	CAPSTONE COURSE	EARLY COLLEGE CREDIT	INDUSTRY CERTIFICATION
Arts, Media & Entertainment	Digital Media & Visual Arts	Adobe Prep 1	Adobe 2 Adobe 3	YES	YES

1885 East Lynwood Drive | San Bernardino, CA 92404

virtualacademy.sbcusd.com/cte

EXTENDED TRAINING/EDUCATION

POST SECONDARY DEGREE/CERTIFICATE OPPORTUNITIES

D=Degree Program

C=Certificate Program

A=Articulation Agreement In Place

DE=Dual Enrollment

ARTS, MEDIA AND ENTERTAINMENT

	SAN BERNARDINO VALLEY COLLEGE	CHAFFEY	CRAFTON	RIVERSIDE COMMUNITY COLLEGE	CSU SAN BERNARDINO	UNIVERSITY OF REDLANDS
Design Media & Visual Arts	D, C, A, DE	D, C	D, C	D, C	D, C	D
Performance Arts	D, DE	D, C	D, C	D, C	D	D, C
Production & Managerial Arts	D, C, A, DE	D, C	D, C	D, C	D, C	D, C

BUILDING AND CONSTRUCTION TRADES

	SAN BERNARDINO VALLEY COLLEGE	CHAFFEY	CRAFTON	RIVERSIDE COMMUNITY COLLEGE	CSU SAN BERNARDINO	UNIVERSITY OF REDLANDS
Residential and Commercial Construction	N/A	N/A	N/A	D, C, A	N/A	N/A

BUSINESS AND FINANCE

	SAN BERNARDINO VALLEY COLLEGE	CHAFFEY	CRAFTON	RIVERSIDE COMMUNITY COLLEGE	CSU SAN BERNARDINO	UNIVERSITY OF REDLANDS
Business Management	D, C, A, DE	D, C, A	D, C	D, C, A	D, C	D, C

EXTENDED TRAINING/EDUCATION

POST SECONDARY DEGREE/CERTIFICATE OPPORTUNITIES

D=Degree Program C=Certificate Program A=Articulation Agreement In Place DE=Dual Enrollment

EDUCATION, CHILD DEVELOPMENT AND HUMAN SERVICES

	SAN BERNARDINO VALLEY COLLEGE	CHAFFEY	CRAFTON	RIVERSIDE COMMUNITY COLLEGE	CSU SAN BERNARDINO	UNIVERSITY OF REDLANDS
Education	D, C, A, DE	D, C	D, C, A	D, C	D, DE	D, C
Family and Human Services	D, C, A, DE	D	D	D	D, C	D, C

ENERGY, ENVIRONMENT AND UTILITIES

	SAN BERNARDINO VALLEY COLLEGE	CHAFFEY	CRAFTON	RIVERSIDE COMMUNITY COLLEGE	CSU SAN BERNARDINO	UNIVERSITY OF REDLANDS
Energy and Power Technology	D, C, A, DE	D	D	D	D, C	D, C

ENGINEERING AND ARCHITECTURE

	SAN BERNARDINO VALLEY COLLEGE	CHAFFEY	CRAFTON	RIVERSIDE COMMUNITY COLLEGE	CSU SAN BERNARDINO	UNIVERSITY OF REDLANDS
Engineering Design	D, DE	D, A	N/A	N/A	D	D, C

HEALTH SCIENCE AND MEDICAL TECHNOLOGIES

	SAN BERNARDINO VALLEY COLLEGE	CHAFFEY	CRAFTON	RIVERSIDE COMMUNITY COLLEGE	CSU SAN BERNARDINO	UNIVERSITY OF REDLANDS
Biotechnology	C, A, DE	D, C	D, C	D, C	C	D
Patient Care	C, A, DE	D, C	D, C, A	D, C, A	D, C	D

EXTENDED TRAINING/EDUCATION

POST SECONDARY DEGREE/CERTIFICATE OPPORTUNITIES

D=Degree Program

C=Certificate Program

A=Articulation Agreement In Place

DE=Dual Enrollment

HOSPITALITY, TOURISM AND RECREATION

	SAN BERNARDINO VALLEY COLLEGE	CHAFFEY	CRAFTON	RIVERSIDE COMMUNITY COLLEGE	CSU SAN BERNARDINO	UNIVERSITY OF REDLANDS
Food Service and Hospitality	D, C, DE	D, C	D	D, C	D, C	N/A

HEALTH SCIENCE AND MEDICAL TECHNOLOGIES

	SAN BERNARDINO VALLEY COLLEGE	CHAFFEY	CRAFTON	RIVERSIDE COMMUNITY COLLEGE	CSU SAN BERNARDINO	UNIVERSITY OF REDLANDS
Machining & Forming Technologies	D, C, A, DE	D, C	N/A	D, C	N/A	N/A

INFORMATION AND COMMUNICATION TECHNOLOGY

	SAN BERNARDINO VALLEY COLLEGE	CHAFFEY	CRAFTON	RIVERSIDE COMMUNITY COLLEGE	CSU SAN BERNARDINO	UNIVERSITY OF REDLANDS
Networking	D, C, DE	D, C	D, C	D, C	D, C, DE	D
Software & Systems Development	D, C, DE	D, C	D, C	D, C	D, C	D, A is pending

EXTENDED TRAINING/EDUCATION

POST SECONDARY DEGREE/CERTIFICATE OPPORTUNITIES

D=Degree Program

C=Certificate Program

A=Articulation Agreement In Place

DE=Dual Enrollment

MARKETING, SALES AND SERVICES

	SAN BERNARDINO VALLEY COLLEGE	CHAFFEY	CRAFTON	RIVERSIDE COMMUNITY COLLEGE	CSU SAN BERNARDINO	UNIVERSITY OF REDLANDS
Marketing	D, C	C	D, C	D, C	C	D, C

PUBLIC SERVICE

	SAN BERNARDINO VALLEY COLLEGE	CHAFFEY	CRAFTON	RIVERSIDE COMMUNITY COLLEGE	CSU SAN BERNARDINO	UNIVERSITY OF REDLANDS
Legal Services	C, DE	D	D	D, C	D	D, C
Public Safety	C, DE	D, C			N/A	N/A

TRANSPORTATION

	SAN BERNARDINO VALLEY COLLEGE	CHAFFEY	CRAFTON	RIVERSIDE COMMUNITY COLLEGE	CSU SAN BERNARDINO	UNIVERSITY OF REDLANDS
Systems Repair and Diagnostics	D, C, A, DE	D, C	N/A	D, C, A	N/A	N/A

WORK BASED LEARNING

WHAT IS WORK BASED LEARNING?

Work-Based Learning (WBL) is where students are provided with real-life work experiences. Students have the opportunity to apply academic and technical skills and develop their employability. Work-Based Learning can take place in the classroom or the career sector.

In order to support comprehensive WBL programs, three main components need to be included:

- alignment of classroom and workplace learning.
- applications of academic, technical, and employability skills in a work setting; and
- support from classroom or workplace mentors



TYPES OF WORK BASED LEARNING

Five types of Work-Based learning (WBL) are reported yearly to CALPADS. SBCUSD has been focused on Internships and Pre-apprenticeships.

1. Pre-Apprenticeships
2. Apprenticeships
3. Internships/Micro Internships
4. Student-Run Businesses
5. Simulated WBL

PRE-APPRENTICESHIPS

A pre-apprenticeship is connected to a registered apprenticeship that includes a formal agreement with the employer and/or sponsor-designated apprenticeship (college/skilled program). Essential components of a registered pre-apprenticeship include coursework directly related to a trade/occupation, relevant job-learning activities, and a certificate of completion.

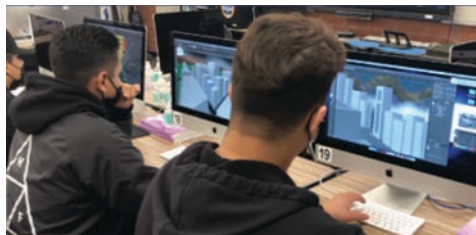


"Pre-apprenticeships" are often confused with "Apprenticeships" for students who are under 18 years old and or still in high school. The term describing the student should be "Intern" or, if formalized, "Pre-Apprenticeship."

APPRENTICESHIP

In an approved Registered Apprenticeship Program (RAP), employers combine education with paid on-the-job training, allowing high school graduates to earn while learning. The average age of an apprentice is 30 years old.

- The California Division of Apprenticeship Standards (OAS) consults with employees to develop a skilled workforce with viable career pathways, which will increase productivity and strengthen our economy.
- Must be high school graduate and/or 18 years of age.



INTERNSHIPS/ MICRO-INTERNSHIPS

An internship is a work-based learning activity which allows students to apply classroom learning in a workplace setting. Internships are a measure of the College Career Indicators (CCI) and are tied to a pathway course, an instructor, a business, or a community partner. The instructor and industry partner work together to ensure student safety, and to monitor student progress.

Internships are:

- Supervised by an industry expert
- Tied to an instructor, course, and/or CTE program
- Paid or unpaid

Internships are not:

- Job shadows or other one-time events or experiences
- A job that a student secures
- Volunteering or working at campus events (Dance/rallies, etc.)

Micro-Internships

- Reduced period of time (could be a one-time event or experience)
- Applying skills from classroom learning
- Supervised by an industry expert
- Tied to an instructor, course, and/or CTE program
- Paid or unpaid



AWARENESS- 9th grade

Learning ABOUT College and Career

Build awareness of the variety of careers available and the role of post-secondary education; Broaden student options.

Experience is defined by:

- One-time interaction with partner(s), often for a group of students.
- Designed primarily by adults to broaden student's awareness of a wide variety of careers & occupations

WBL may include:

- Workplace tour
- Guest Speaker
- Career Fair
- Create list of jobs interested in

Career Readiness Learning will include:

- Individual student learning, college & career plan (CCGI)
- Career interest inventory
- Online career related program
- AVID experiences if applicable
- Pathway exposure

Post-Secondary Learning will include:

- College Tour
- College & career interest

EXPLORATION--10th grade

Learning ABOUT College and Career

Explore career options & post-secondary requirements for purpose of motivation & to inform decision-making in high school and post-secondary.

Experience is defined by:

- One-time interaction with partner(s), for a single student or small group
- Personalized to connect to emerging student interests
- Student takes an active role in selecting & shaping the experience
- Individual student learning, college & career plan (CCGI)

WBL might include:

- Informational experiences
- Job shadow
- Micro-internships [Micro Link](#)
- Mock interview with a partner

Career Readiness Learning might include:

- Community planning project
- Industry competition/event
- Resume development
- Business dress, behaviour, & etiquette training
- Pathway courses
- College & career plan (CCGI)

Post-Secondary Learning might include:

- College Tour
- College & career interest

PREPARATION - 11th grade

Learning Through College and Career

Applying learning through practical experience that develops knowledge & skills necessary.

Experience is defined by:

- Direct interaction with partners over time
- Application of skills transferable to a variety of careers
- Activities have value beyond success in the classroom
- K-12 learning outcome for student and benefit to partner outcomes are equally valued

WBL might include:

- Industry-driven project
- Student-run enterprise
- Virtual experience
- Internship connected to curriculum
- Pre-apprenticeship opportunities/ All pathway students in approved program [E-Connected Industry Skill Sets](#)

Career Readiness Learning might include:

- Community planning project
- Industry competition/event (JAG, DECA, HOSA)
- Resume development
- Business dress, interviewing behaviour, and etiquette training
- Pathway courses
- College & career plan ([CCGI](#))

Post-Secondary Learning might include:

- Dual-enrollment
- Integrated project
- College application

Final Preparation- 12th grade

Learning For College and Career

Train for employment and/or enrollment in post-secondary education.

Experience is defined by:

- Interaction with partners over extended period of time
- Partner outcome is primary and K-12 student/learning outcome is secondary
- Develop mastery of occupation specific skills

WBL might include:

- Industry-driven project
- Student-run enterprise
- Virtual experience
- Internship connected to curriculum
- Pre-apprenticeship opportunities

Career Readiness Learning might include:

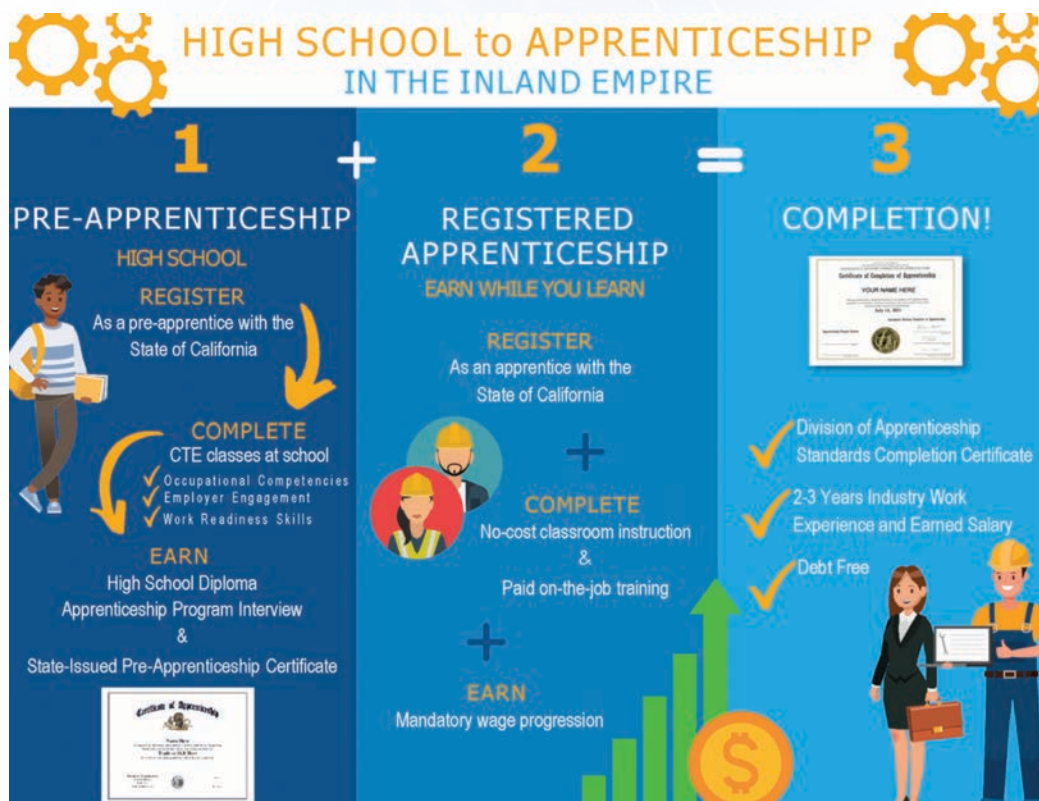
- Community planning project
- Industry competition/event
- Resume development
- Business dress, behaviour, & etiquette training
- Pathway courses
- College & career plan ([CCGI](#))

Post-Secondary Learning might include:

- Concurrent enrollment
- College application
- [LAUNCH SB County](#)
- [Apprenticeship exploration SBVC](#)
- [exploration](#)

SAN BERNARDINO CITY UNIFIED SCHOOL DISTRICT WORK-BASED LEARNING CONTINUUM

APPRENTICESHIPS



PRE-APPRENTICESHIP

A Registered Pre-Apprenticeship is a structured training program designed to prepare individuals for entry into a Registered Apprenticeship Program (RAP). These programs are recognized by the U.S. Department of Labor (DOL) or state apprenticeship agencies and provide participants with foundational skills, hands-on experience, and industry knowledge relevant to a specific trade or profession.

Key Features:

- **Industry-Aligned Curriculum:** Pre-apprenticeships teach technical and soft skills needed for success in a formal apprenticeship.
- **Direct Pathway to Apprenticeship:** Many programs have agreements with RAPs to ensure graduates receive priority entry or advanced standing.
- **Hands-On Training:** Participants gain practical experience through classroom instruction, lab work, and sometimes job-site exposure.
- **Support Services:** Programs often include career counseling, mentoring, and wraparound services to help participants succeed.
- **No Cost or Low Cost:** Many programs are funded through grants or industry partnerships, reducing financial barriers for learners.

Registered pre-apprenticeships serve as an inclusive gateway for underrepresented groups, including women and minorities, helping them access high-quality career pathways in skilled trades and technical fields



SBCUSD APPROVED PRE-APPRENTICESHIP PROGRAMS

- Culinary - Automotive - Construction
- Early Childhood Education - Mechatronics

CTE INDUSTRY PARTNERS

What **IS** an Industry Partner?

Industry partners are crucial in Career and Technical Education (CTE) pathways, providing real-world experience, aligning curriculum with workforce needs, and enhancing student employability. Their involvement ensures that training programs remain relevant by incorporating current industry standards, emerging technologies, and essential skills. Through apprenticeships, internships, and mentorship programs, industry partners bridge the gap between education and employment, giving students hands-on learning opportunities and direct career pathways. Additionally, their investment—whether through equipment donations, guest lectures, or advisory roles—strengthens CTE programs and fosters a skilled workforce that meets industry demands.

Let's **Connect**

Join Our Team by scanning this QR Code



COLLEGE PARTNERS



LABOR/PRE-APPRENTICESHIP & APPRENTICESHIP PARTNERS



IBEW
Local 477



FREQUENTLY ASKED QUESTIONS:

1. Who can join a Pathway?

Anyone! There are no prerequisites to join a pathway.

2. How do I join a Pathway?

Just talk to your school Counselor! We make it super easy. We WANT you to join a Pathway. The experiences are INVALUABLE.

3. What do you do in a Pathway class?

Pathway students get real-world experience through hands-on projects and micro-internships. They learn directly from teachers who have worked in the industry, so they are being trained by experts! Students also work on important soft skills specific to a career path. Plus, they have the opportunity to earn industry-recognized certifications that will allow them to stand out after high school. Pathways are all about preparing students for success in whatever comes next, whether it's college, work, or other opportunities!

4. Do I have to stay in a Pathway all the way through high school?

Pathway lengths vary between two to four years. Check with your school site counselor on the pathway's exit policy.

5. What if I want to change my "home" school to a different high school for their Pathway?

Any student can apply to transfer to any high school through the district standard transfer process.



www.sbcusd.com



**SECONDARY
EDUCATION**
COLLEGE & CAREER

