

Vending Machines and School Stores

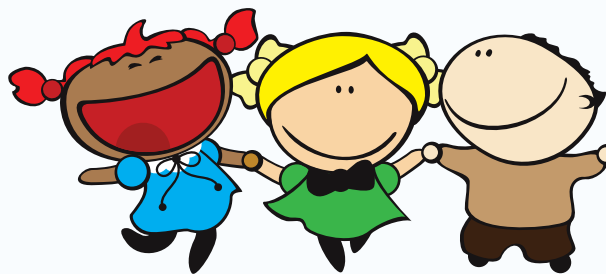
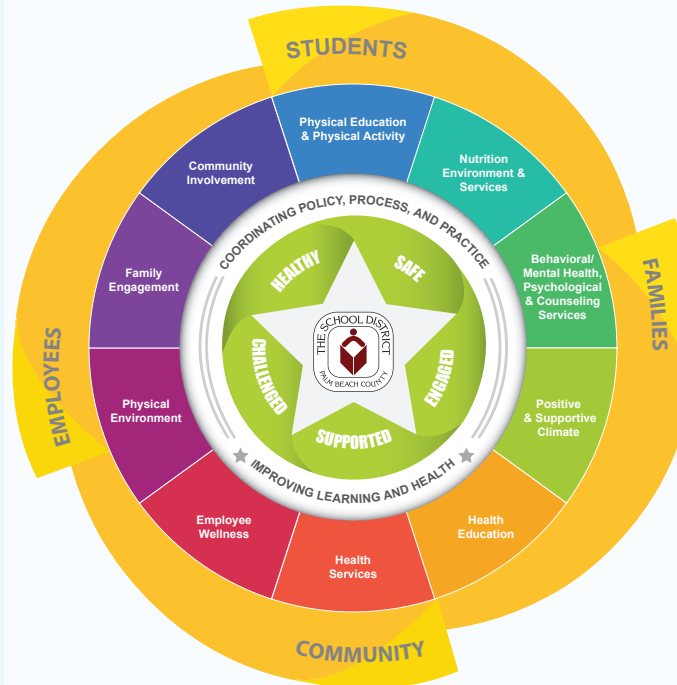


FACTS

According to the United States Department of Agriculture (USDA), Beverages and Snacks **SOLD** in Vending Machines and School Stores:

- Are NOT fundraisers.
- May be operational at any time during the school day.
- Must ALWAYS be Smart Snack Compliant.

*Whole School, Whole Community,
Whole Child Culture...*



For more information contact:
healthyschoolteams@palmbeachschools.org

Non-Discrimination Statement

USDA is an equal opportunity provider and employer.

Food Fundraising Guidelines



Healthy School Teams

Florida Statute requires that all food and beverages **SOLD** to students follow specific guidelines.

To maintain consistent standards district-wide, keep this document nearby.

For more information
District Hub/Teachers/HealthySchoolTeams



Food Fundraisers

There are important guidelines that must be followed when conducting food fundraisers.

When selling food to students, the food must:

1. Be Smart Snack compliant.
2. Be sold **30** minutes after the last lunch period ends.
3. Adhere to the allowable fundraising exemption amounts for the school type.
4. Be reported and tracked on the **Food Fundraiser Tracking Form** (found on the Healthy School Teams [HUB](#) page) prior to each food fundraiser held on campus throughout the year. One entry form is required per food fundraiser.



Let's Develop
Healthy
Practices!

Allowable Exemptions

The State of Florida allows schools to “break the Smart Snack Rule” a specific number of days each year which is called an “**exemption.**” Exemption amounts are based upon the school type which are noted below:

Elementary Schools

(Including K-6, if applicable)

Allowable Exemptions

5 days during the school year

Allowable Selling Times

30 minutes after the last lunch

Middle Schools

(6-8) or Junior High (7-9)

Allowable Exemptions

10 days during the school year

Allowable Selling Times

30 minutes after the last lunch

High Schools

(9-12)

Allowable Exemptions

15 days during the school year

Allowable Selling Times

30 minutes after the last lunch

Combination Schools

(PK-8, 6-12, K-12)

Allowable Exemptions

10 days during the school year

Allowable Selling Times

30 minutes after the last lunch

The USDA defines the school day as...

Midnight to **30** minutes after the official school day ends (last bell) which is specific to these food fundraising guidelines.

Combination Foods

Are any “entrée-like” items that contain a protein and a grain. Combination foods may **ONLY be sold 30 minutes after the end of the school day.**

Examples of Combination Foods

Pizza
Chicken Sandwich
Burger
Hotdog
Sandwich



Per State Statute, there are **NO EXEMPTIONS** for **Combination Foods.**

